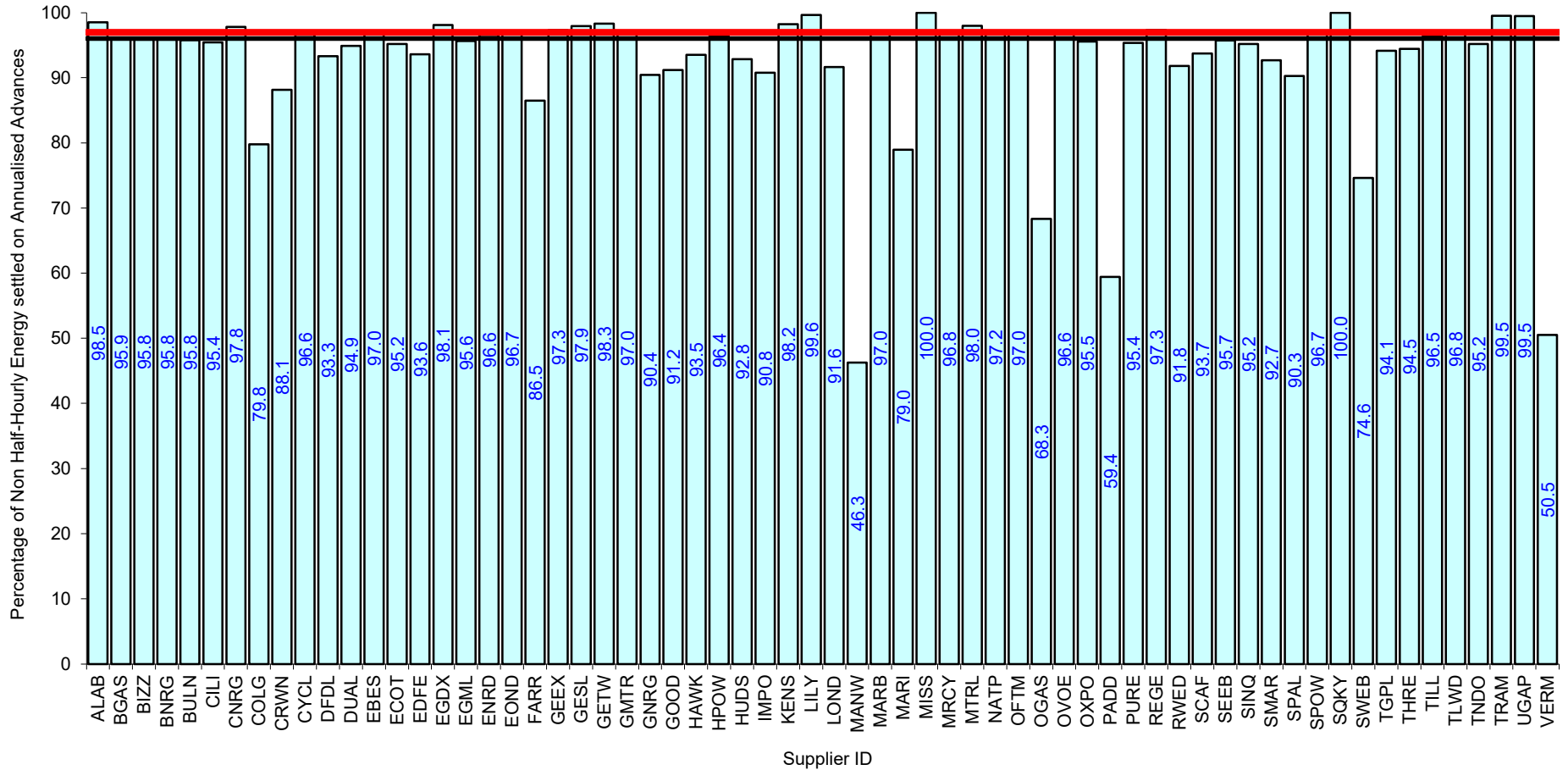
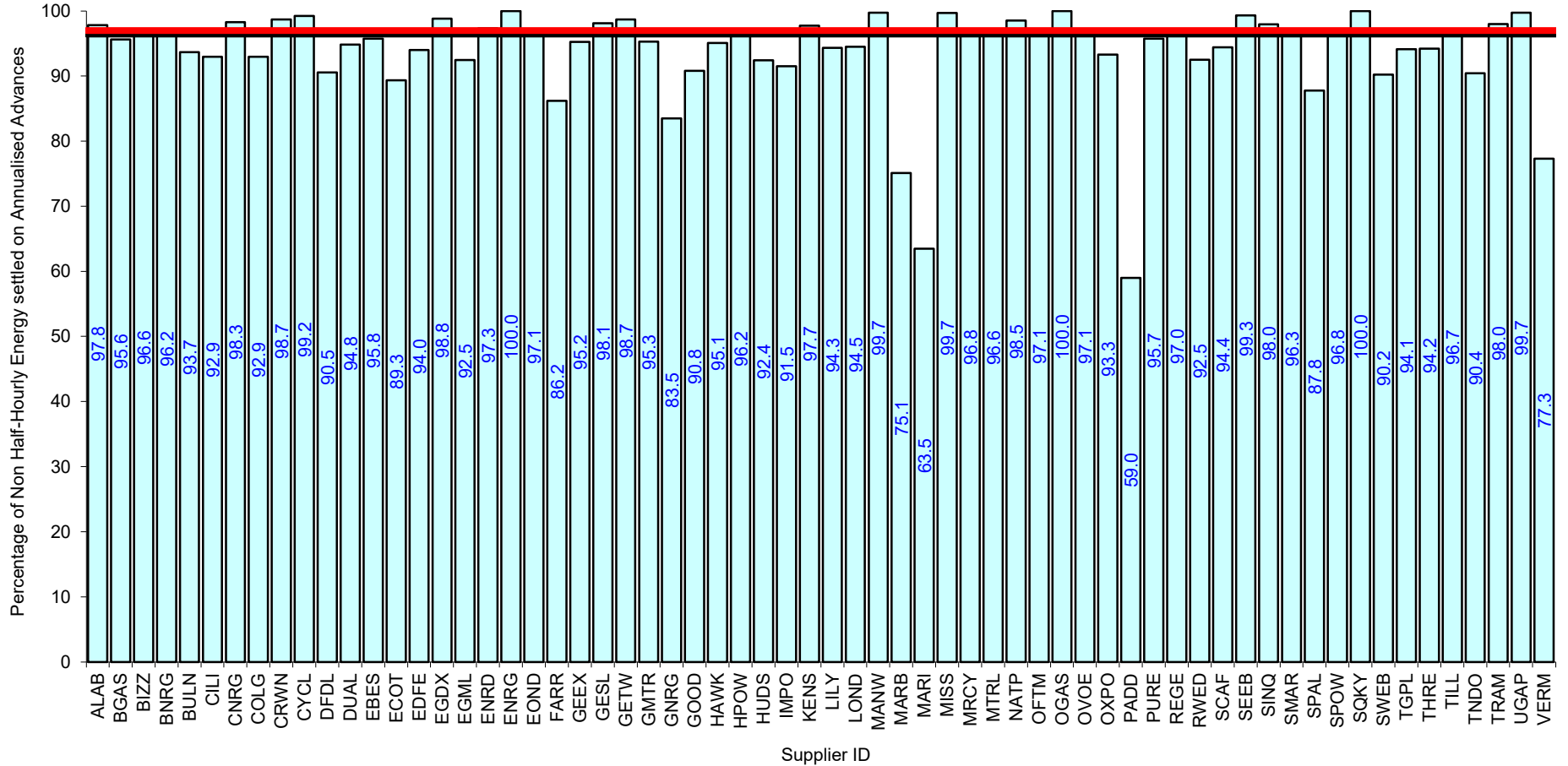


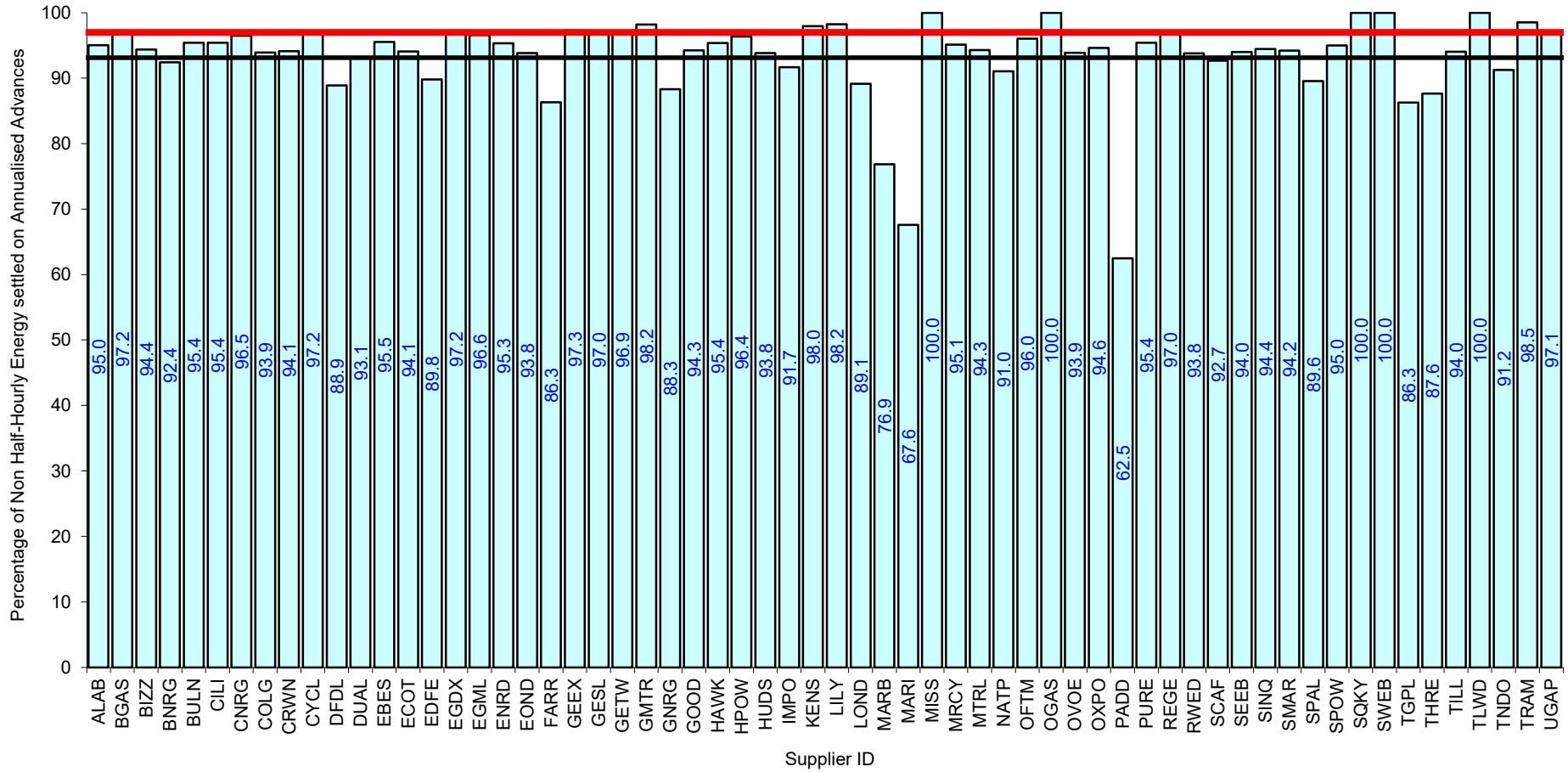
Serial SP08a. GSP Group: Eastern (_A). Reporting Period 1 to 31 August 2025 . Reconciliation Run: RF

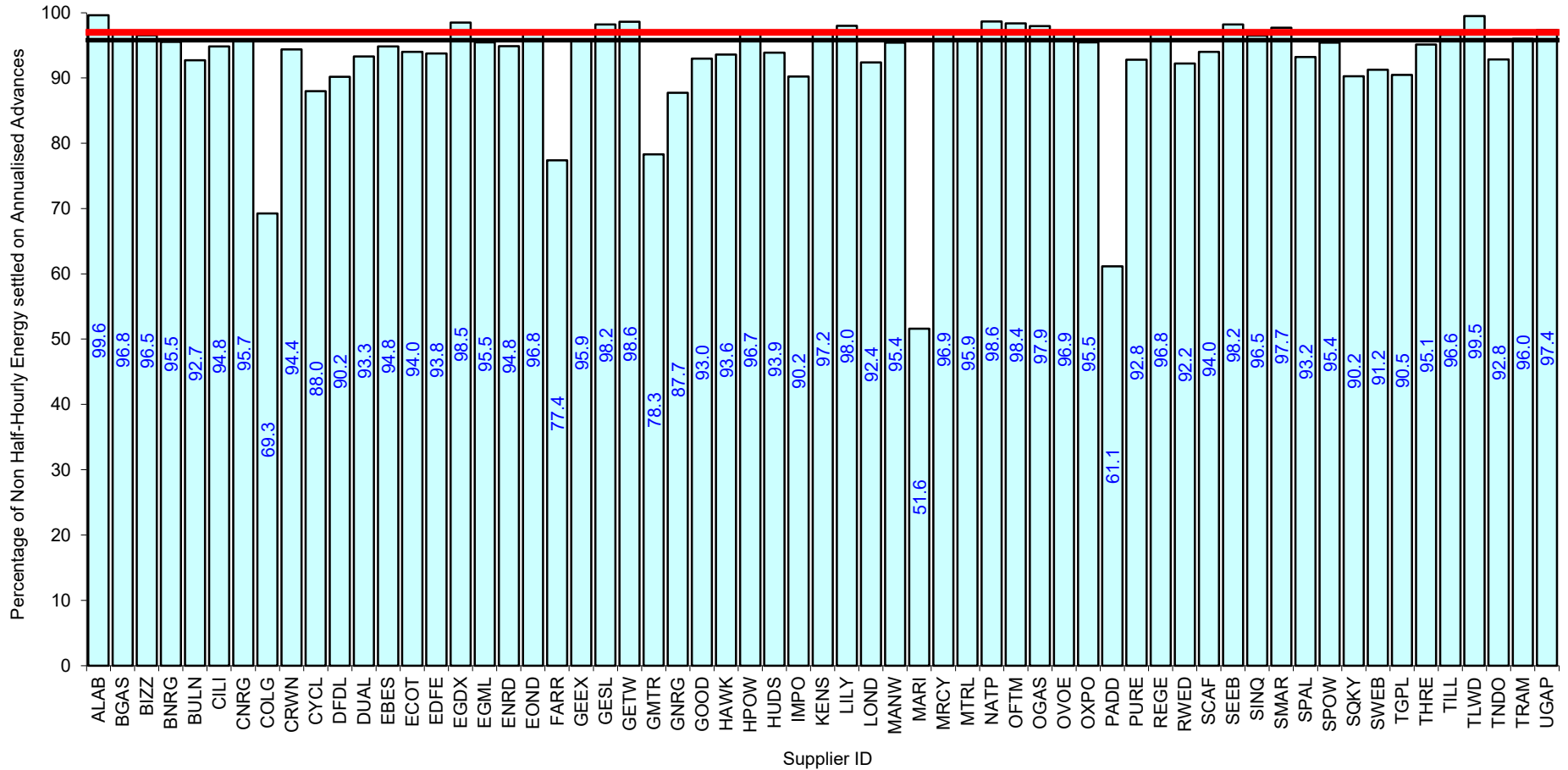


Serial SP08a. GSP Group: East Midlands (_B). Reporting Period 1 to 31 August 2025 . Reconciliation Run: RF

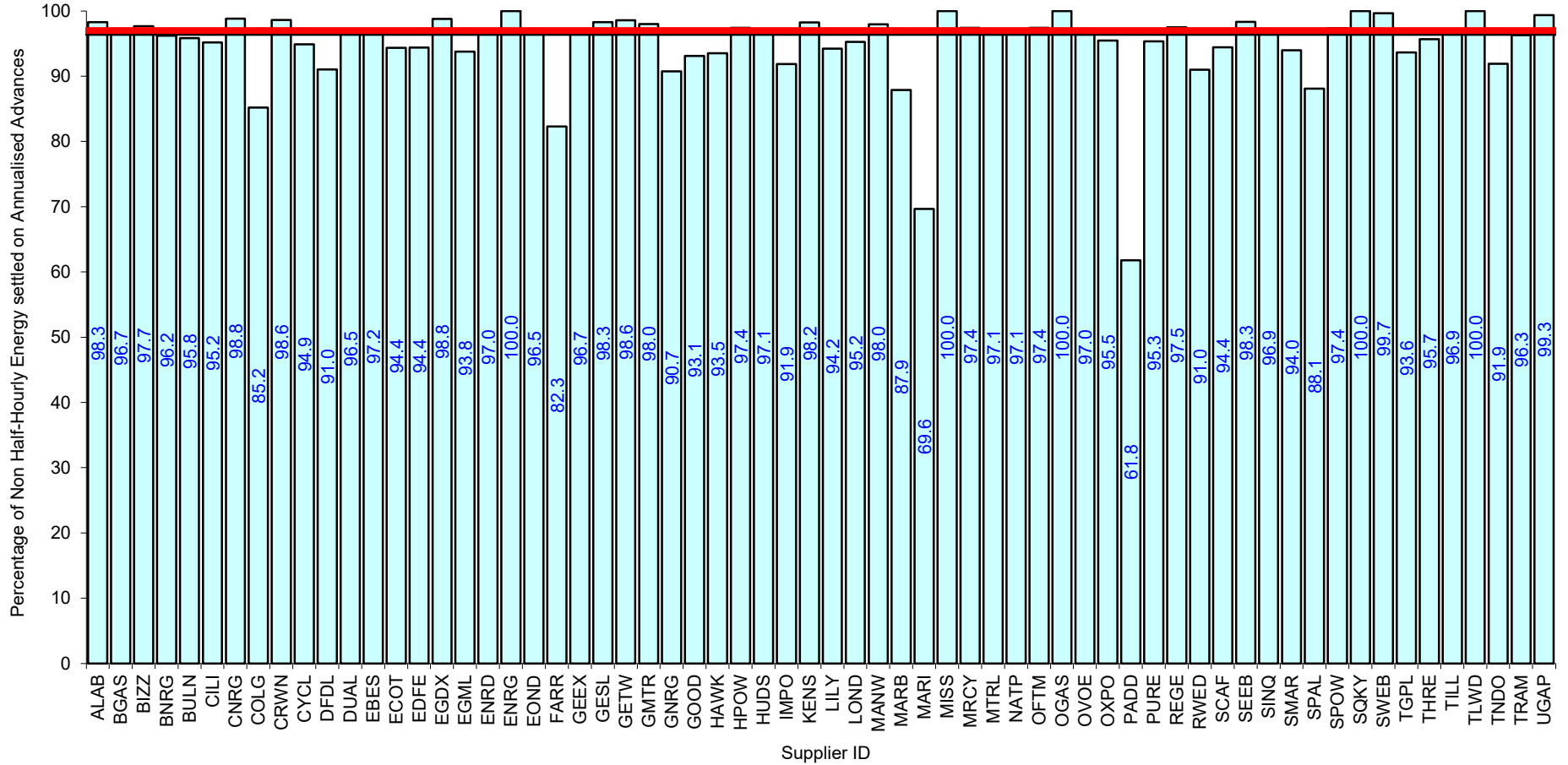


Serial SP08a. GSP Group: London (_C). Reporting Period 1 to 31 August 2025 . Reconciliation Run: RF

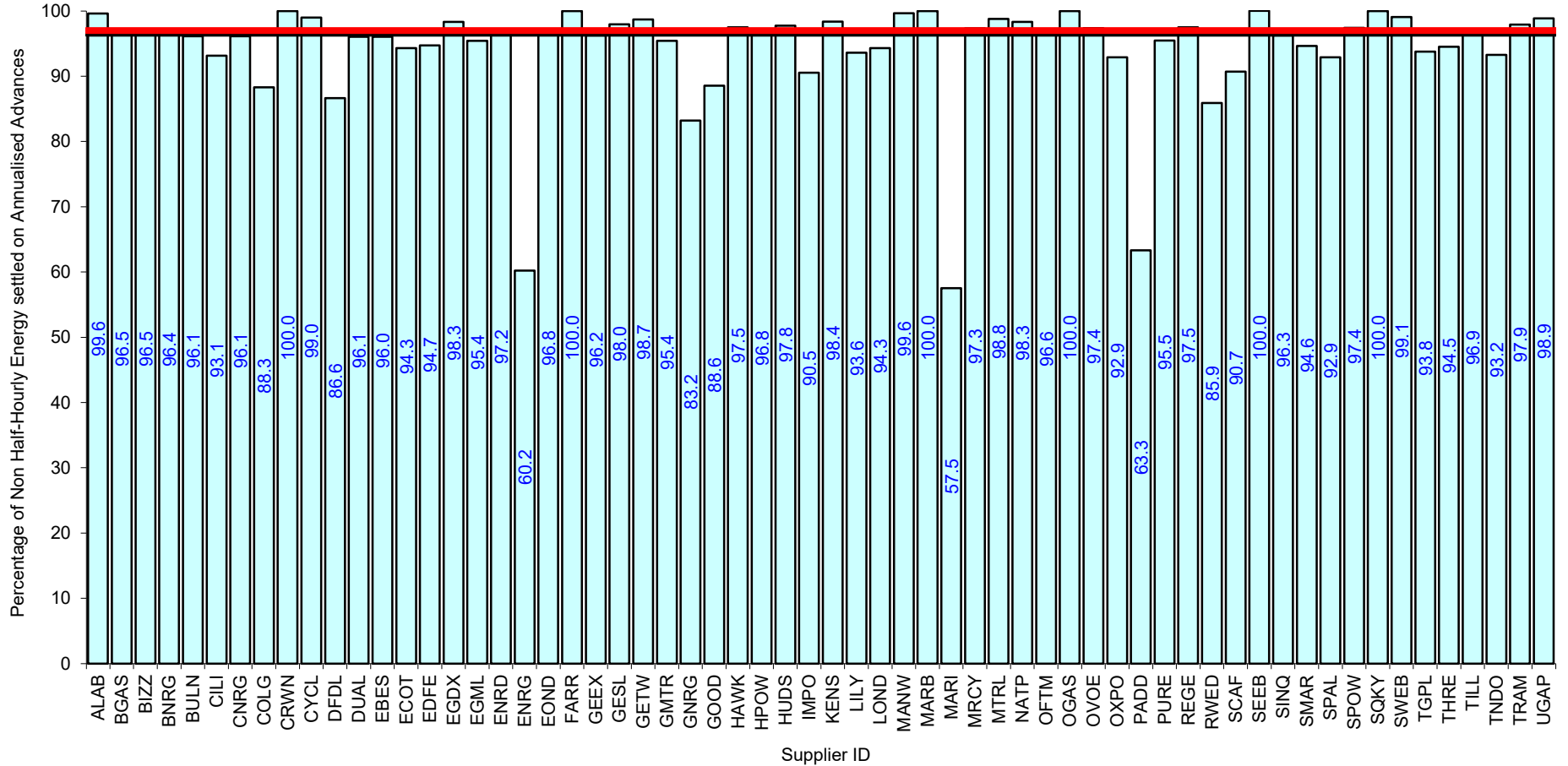




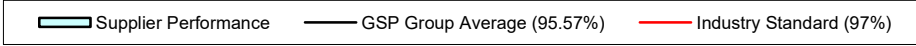
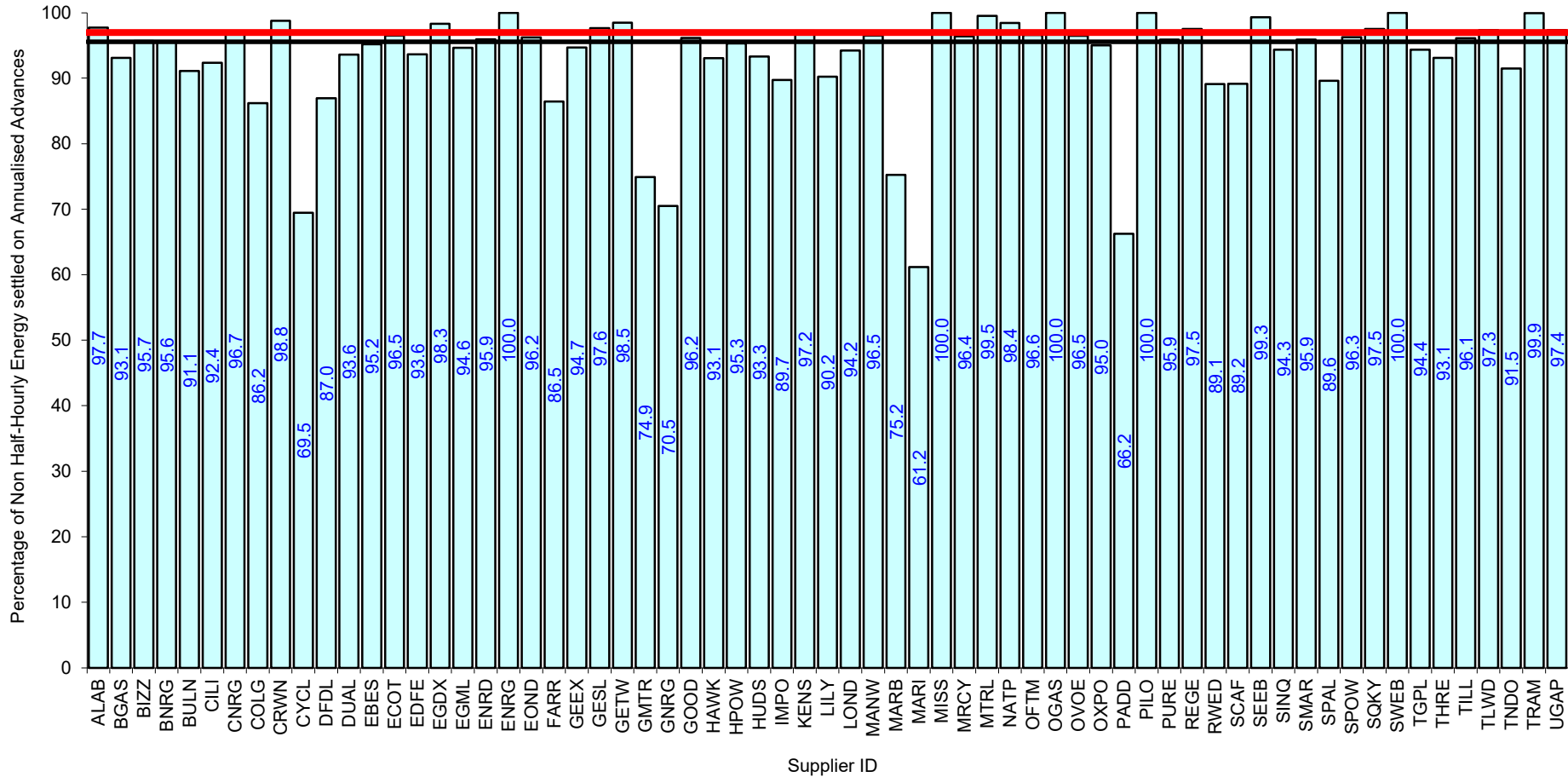
Serial SP08a. GSP Group: Midlands (_E). Reporting Period 1 to 31 August 2025 . Reconciliation Run: RF



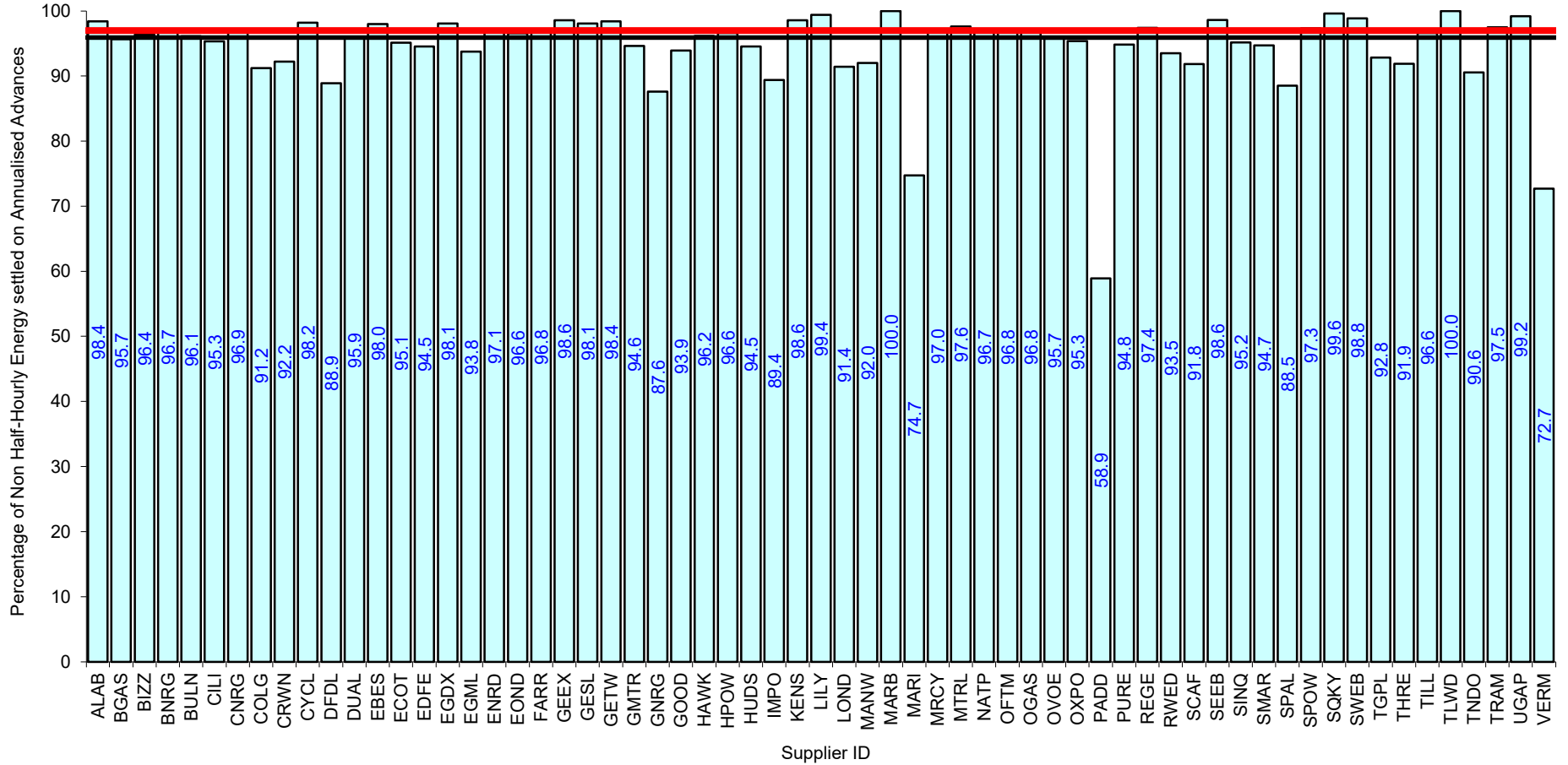
Serial SP08a. GSP Group: Northern (_F). Reporting Period 1 to 31 August 2025 . Reconciliation Run: RF



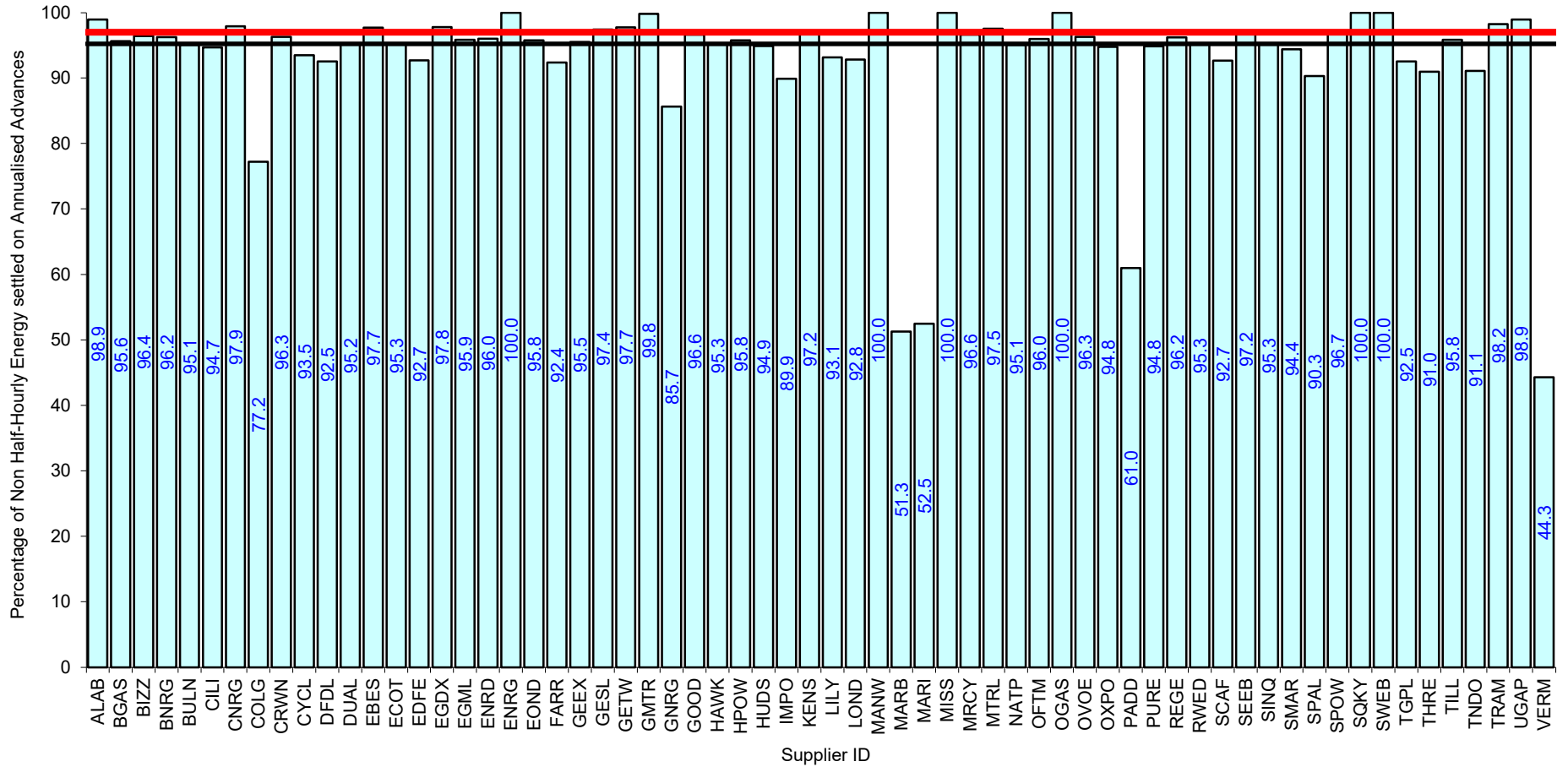
Serial SP08a. GSP Group: North Western (_G). Reporting Period 1 to 31 August 2025 . Reconciliation Run: RF



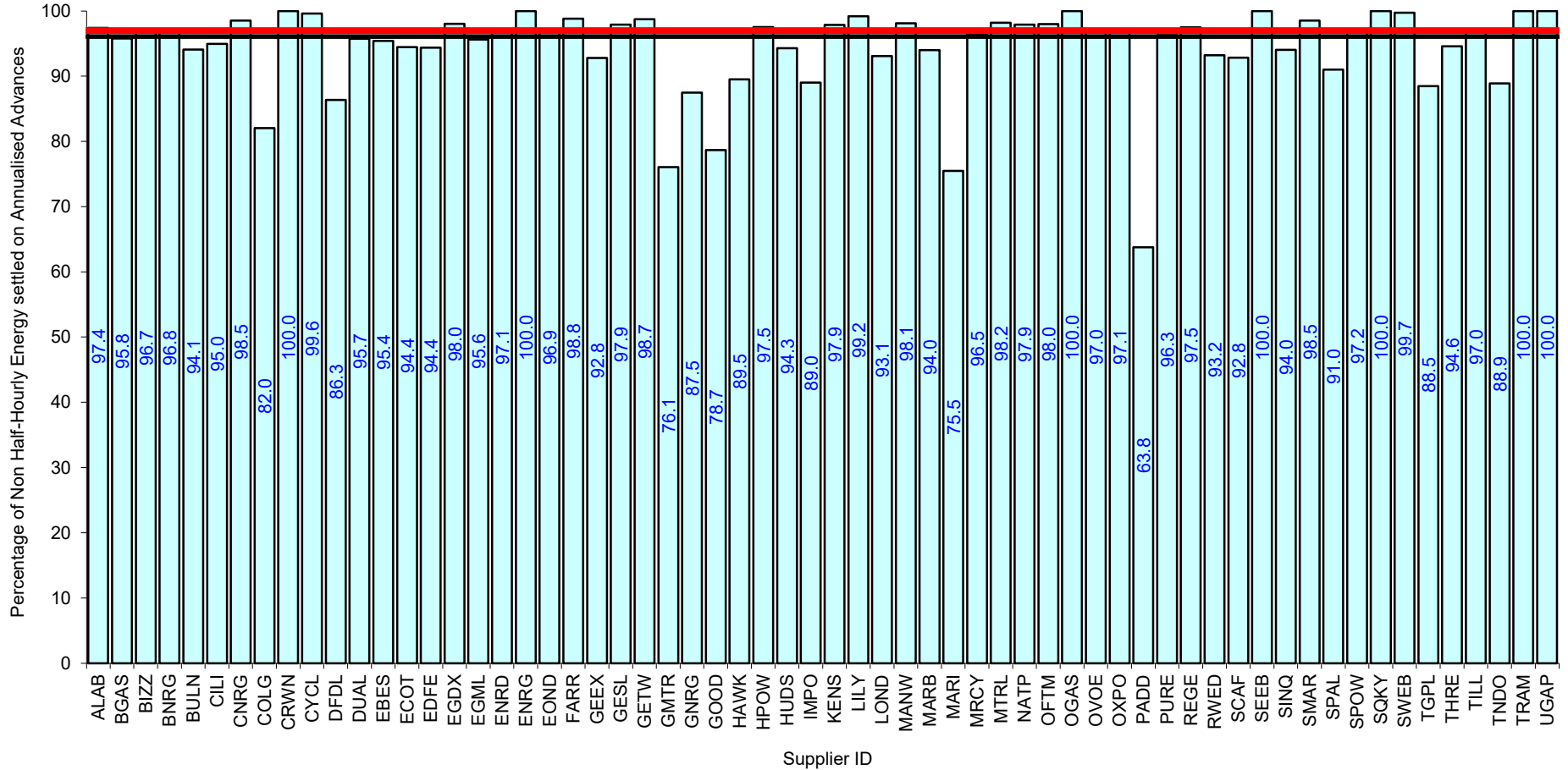
Serial SP08a. GSP Group: Southern (_H). Reporting Period 1 to 31 August 2025 . Reconciliation Run: RF



Serial SP08a. GSP Group: South Eastern (_J). Reporting Period 1 to 31 August 2025 . Reconciliation Run: RF

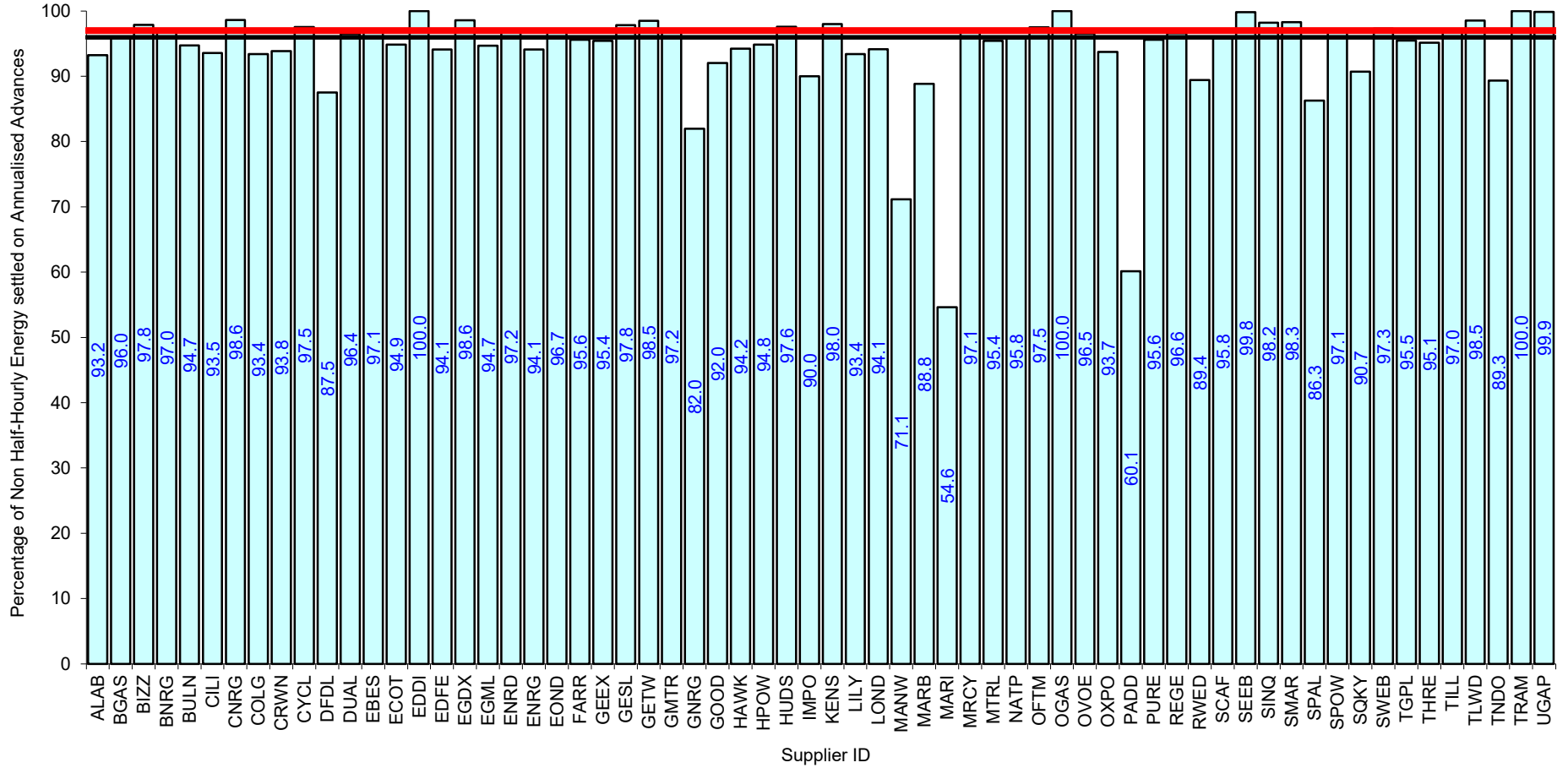


Serial SP08a. GSP Group: South Wales (_K). Reporting Period 1 to 31 August 2025 . Reconciliation Run: RF

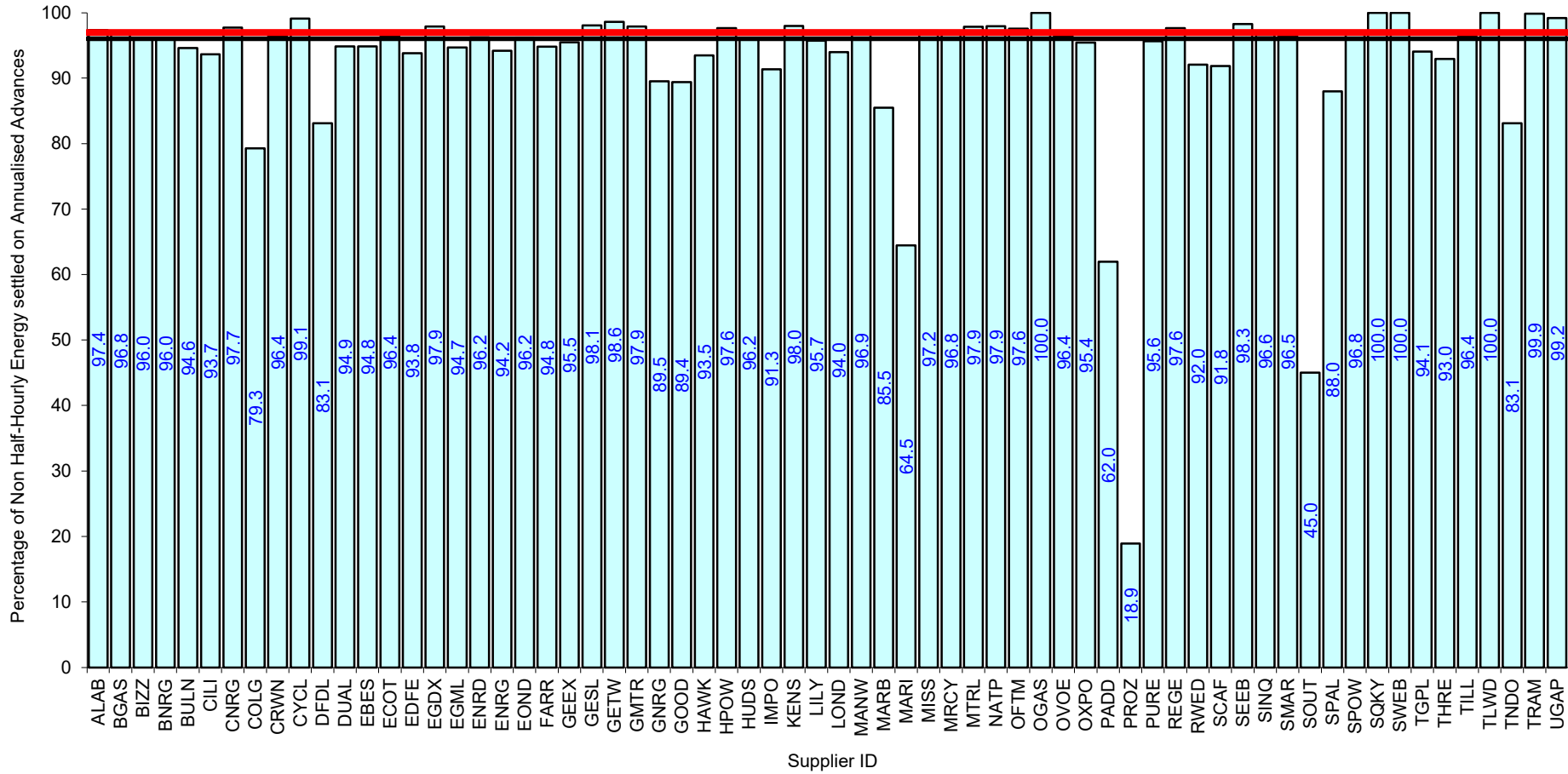


Supplier Performance
 GSP Group Average (96.08%)
 Industry Standard (97%)

Serial SP08a. GSP Group: South Western (_L). Reporting Period 1 to 31 August 2025 . Reconciliation Run: RF



Supplier Performance
 — GSP Group Average (95.98%)
— Industry Standard (97%)



Serial SP08a. GSP Group: South Scotland (_N). Reporting Period 1 to 31 August 2025 . Reconciliation Run: RF

