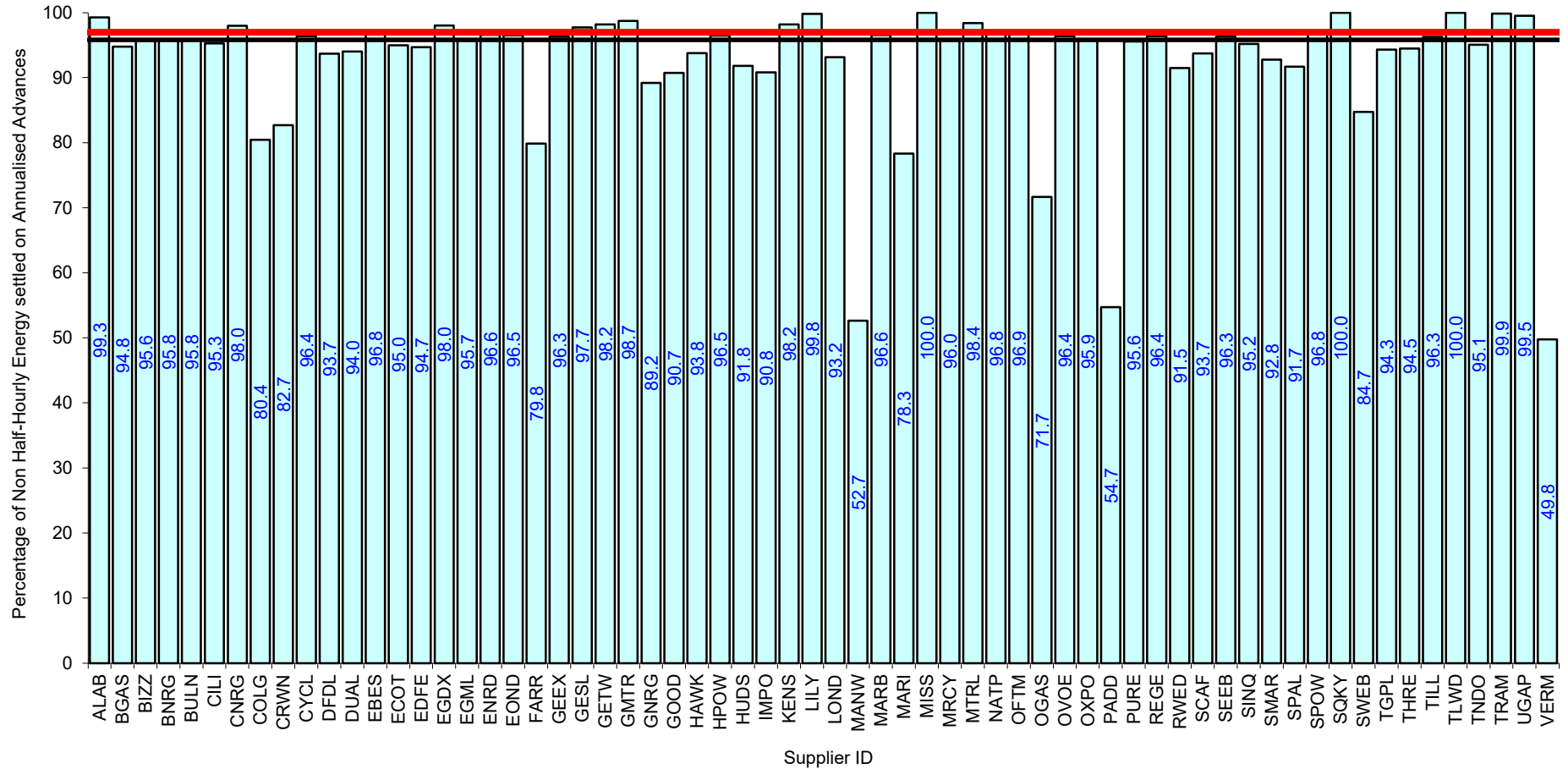
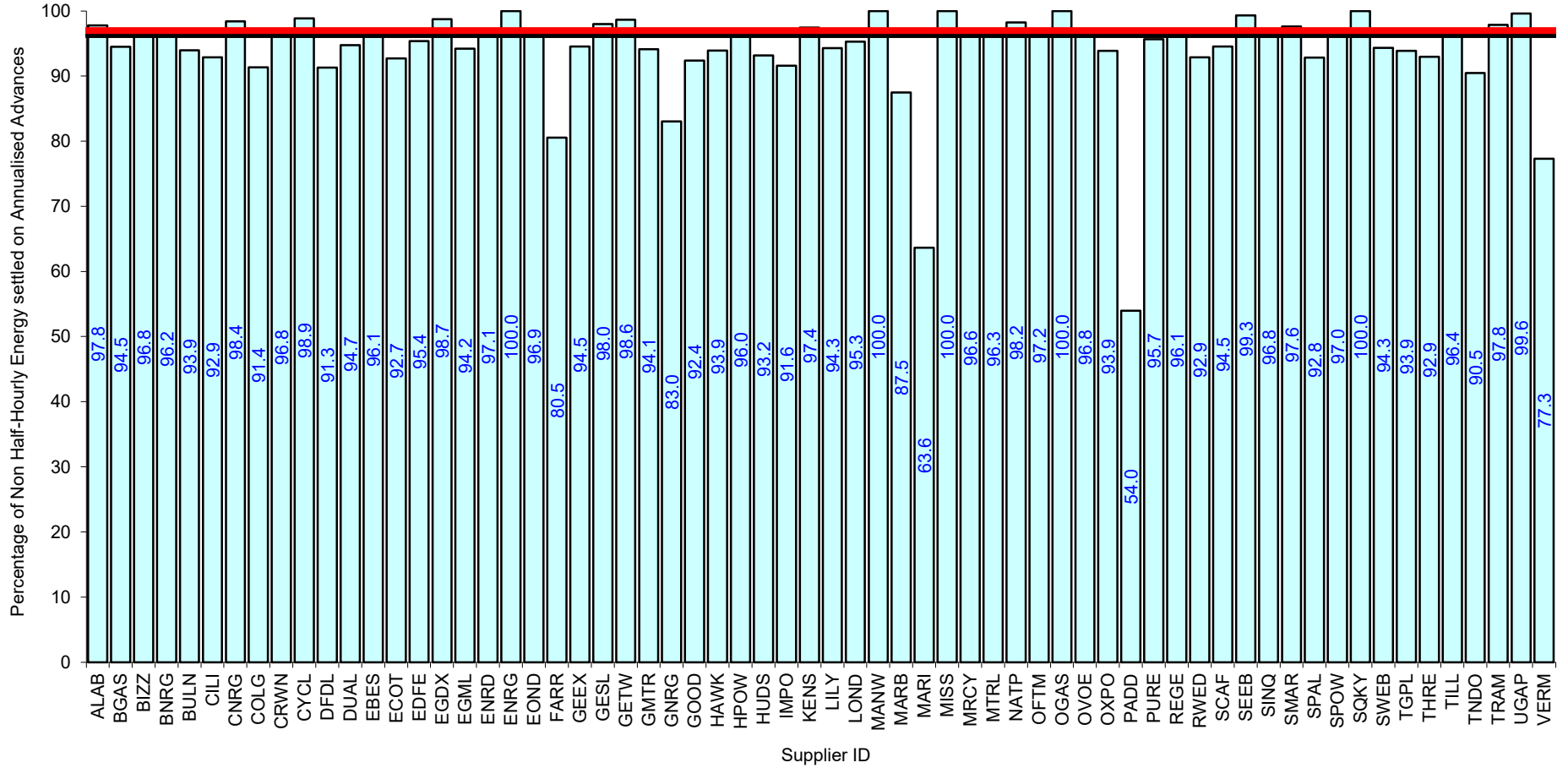


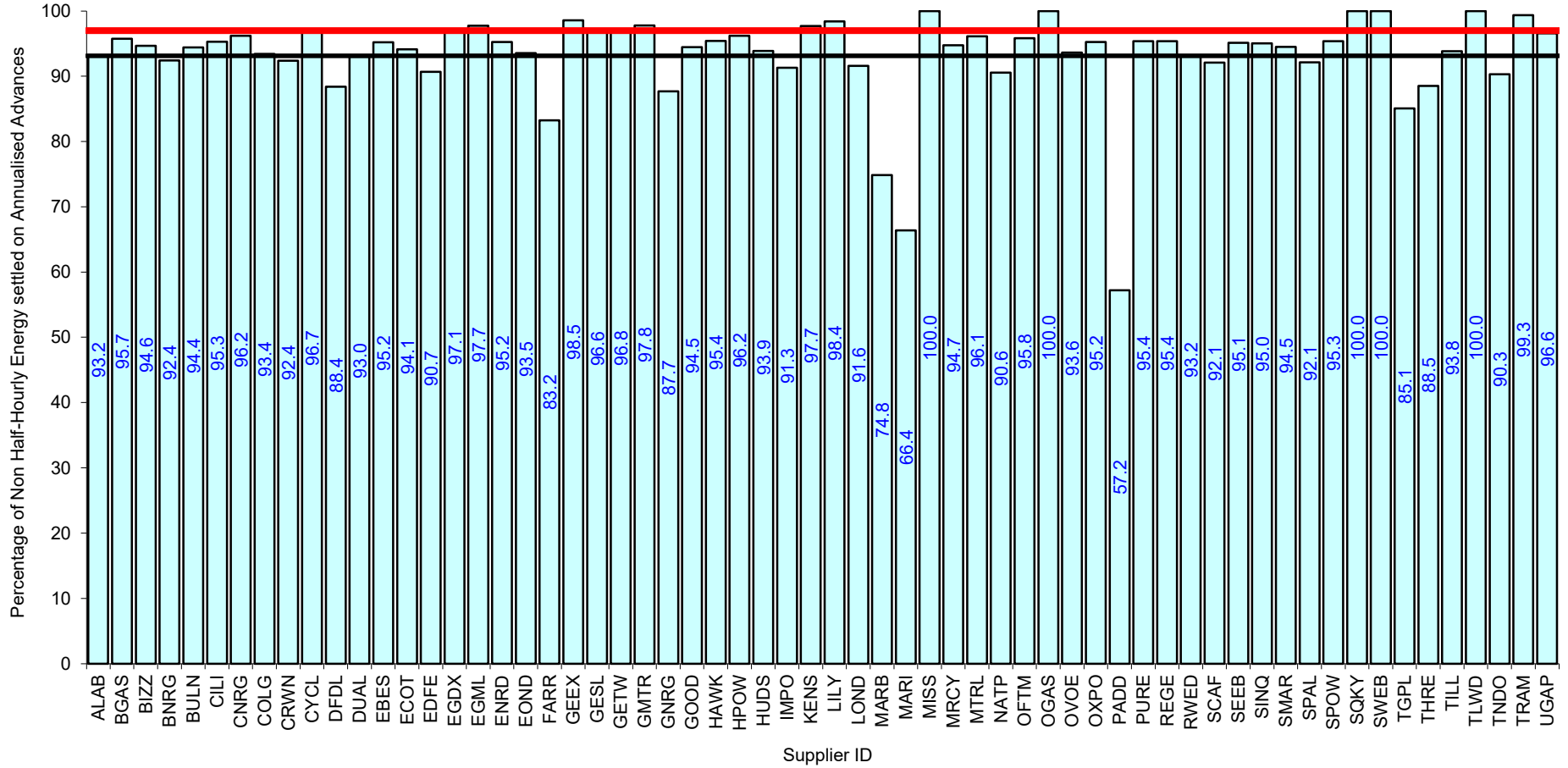
Serial SP08a. GSP Group: Eastern (\_A). Reporting Period 1 to 31 July 2025 . Reconciliation Run: RF



Serial SP08a. GSP Group: East Midlands (\_B). Reporting Period 1 to 31 July 2025 . Reconciliation Run: RF

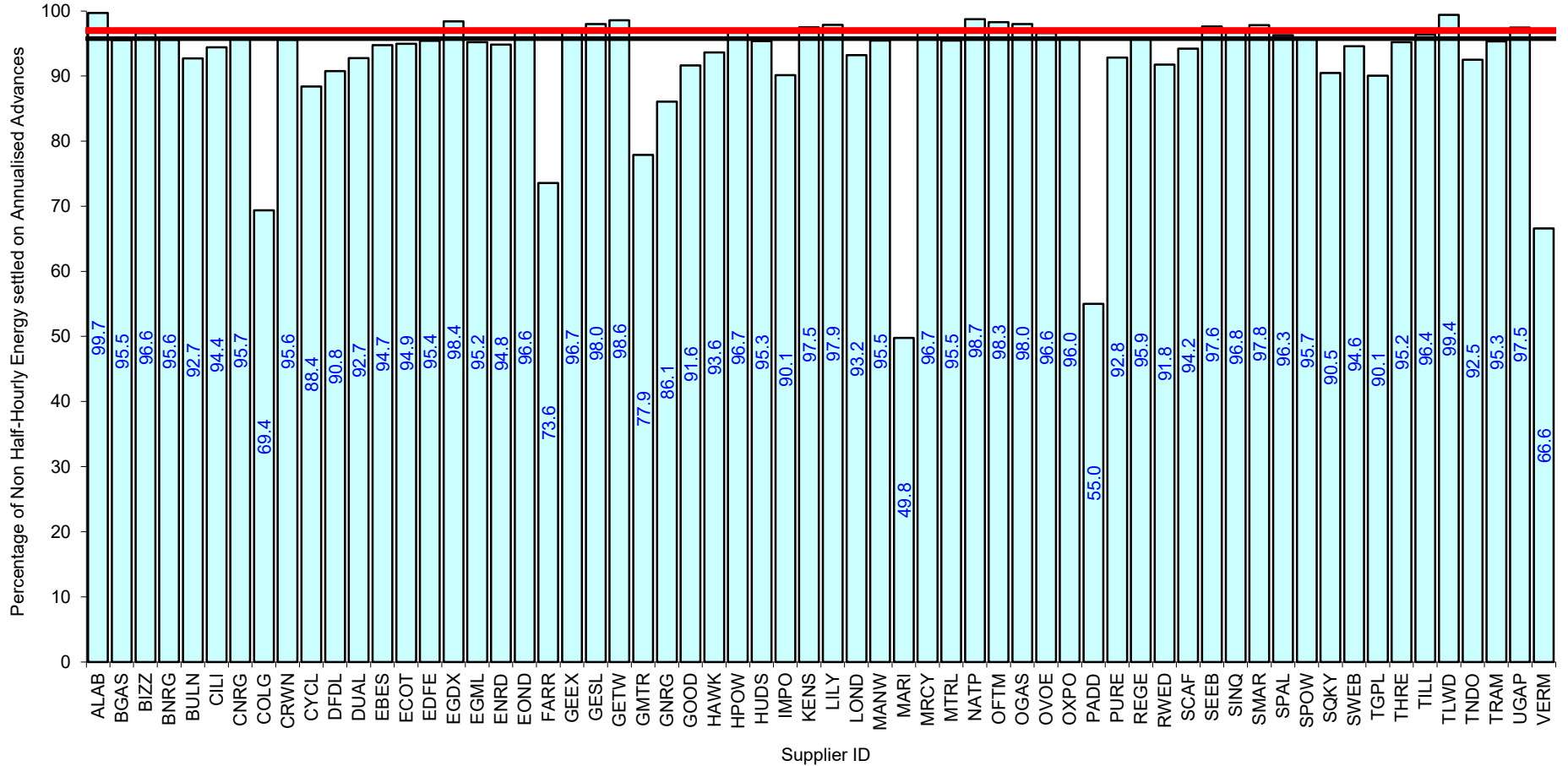


Serial SP08a. GSP Group: London (\_C). Reporting Period 1 to 31 July 2025 . Reconciliation Run: RF

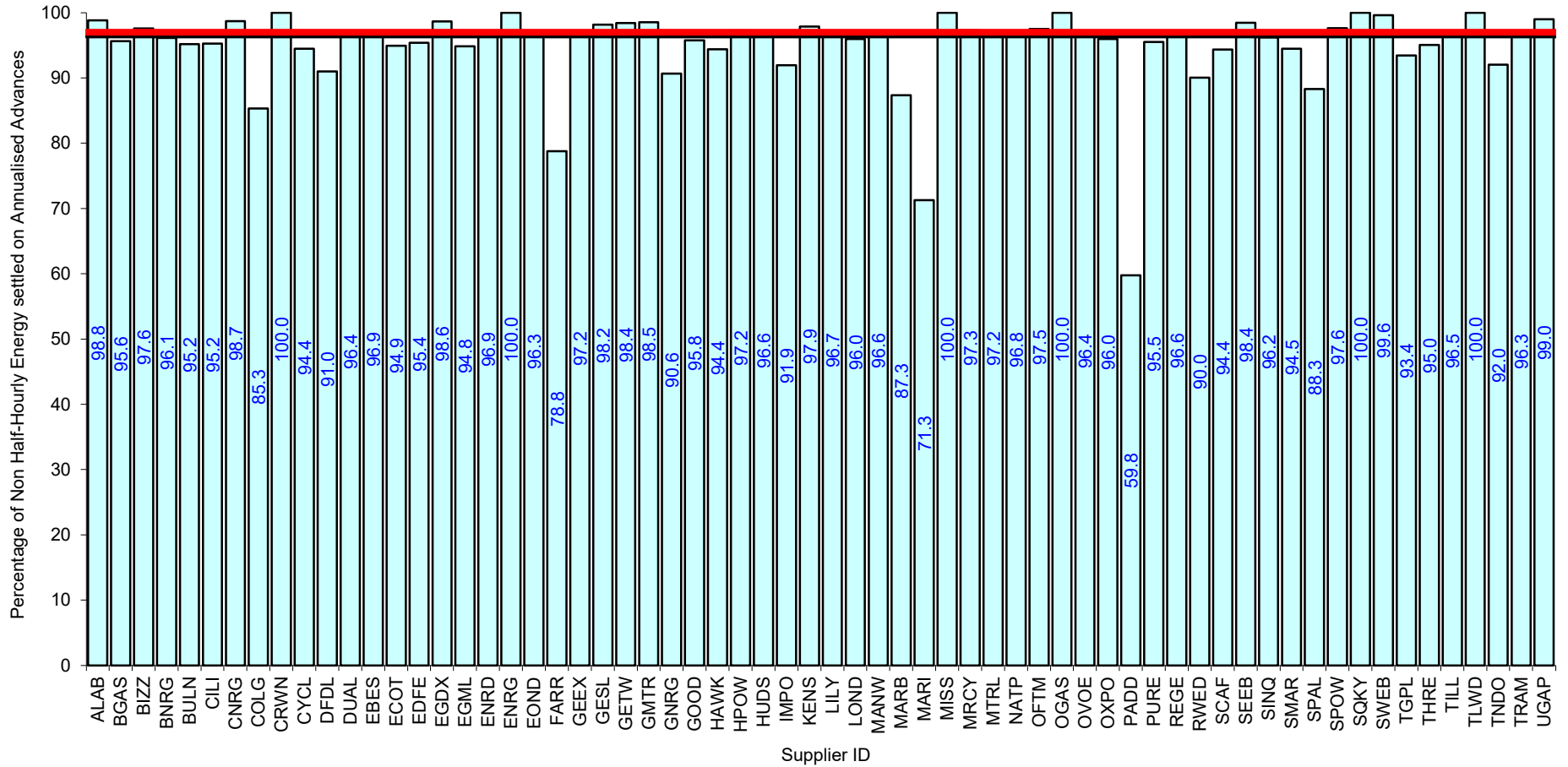


Supplier Performance
 — GSP Group Average (93.15%)
— Industry Standard (97%)

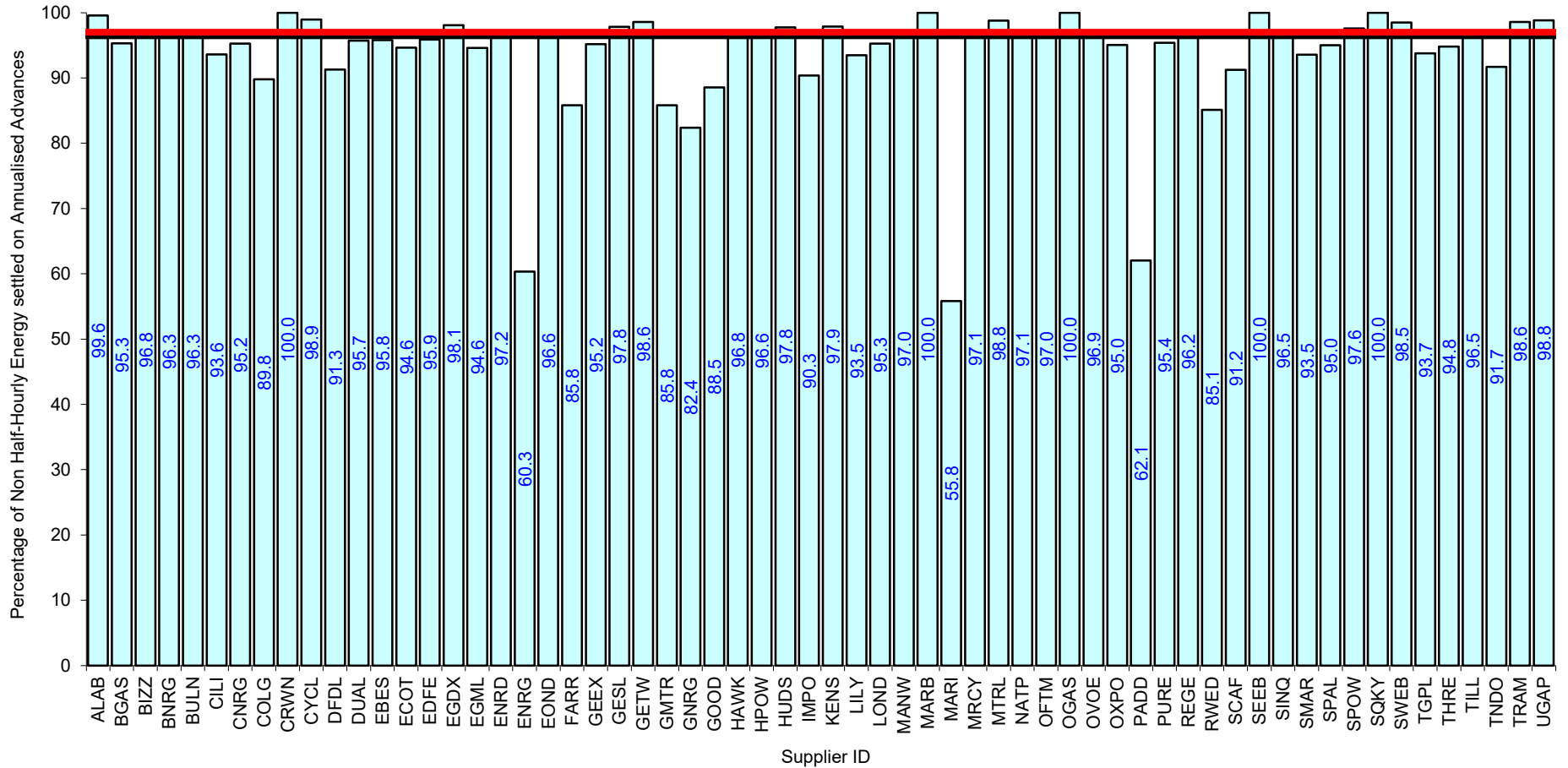
Serial SP08a. GSP Group: Merseyside and North Wales (\_D). Reporting Period 1 to 31 July 2025 . Reconciliation Run: RF



Serial SP08a. GSP Group: Midlands (\_E). Reporting Period 1 to 31 July 2025 . Reconciliation Run: RF

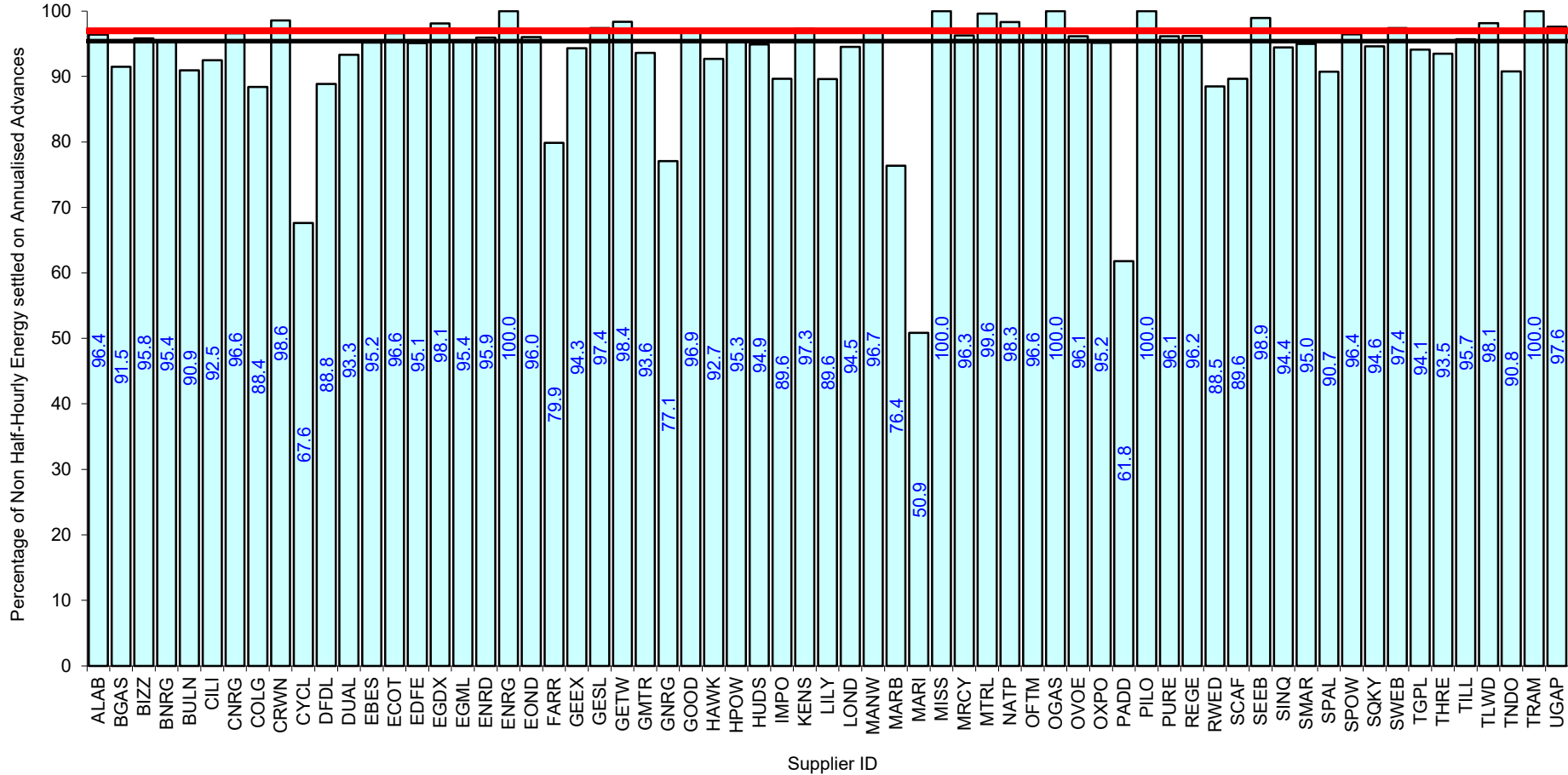


Serial SP08a. GSP Group: Northern (\_F). Reporting Period 1 to 31 July 2025 . Reconciliation Run: RF



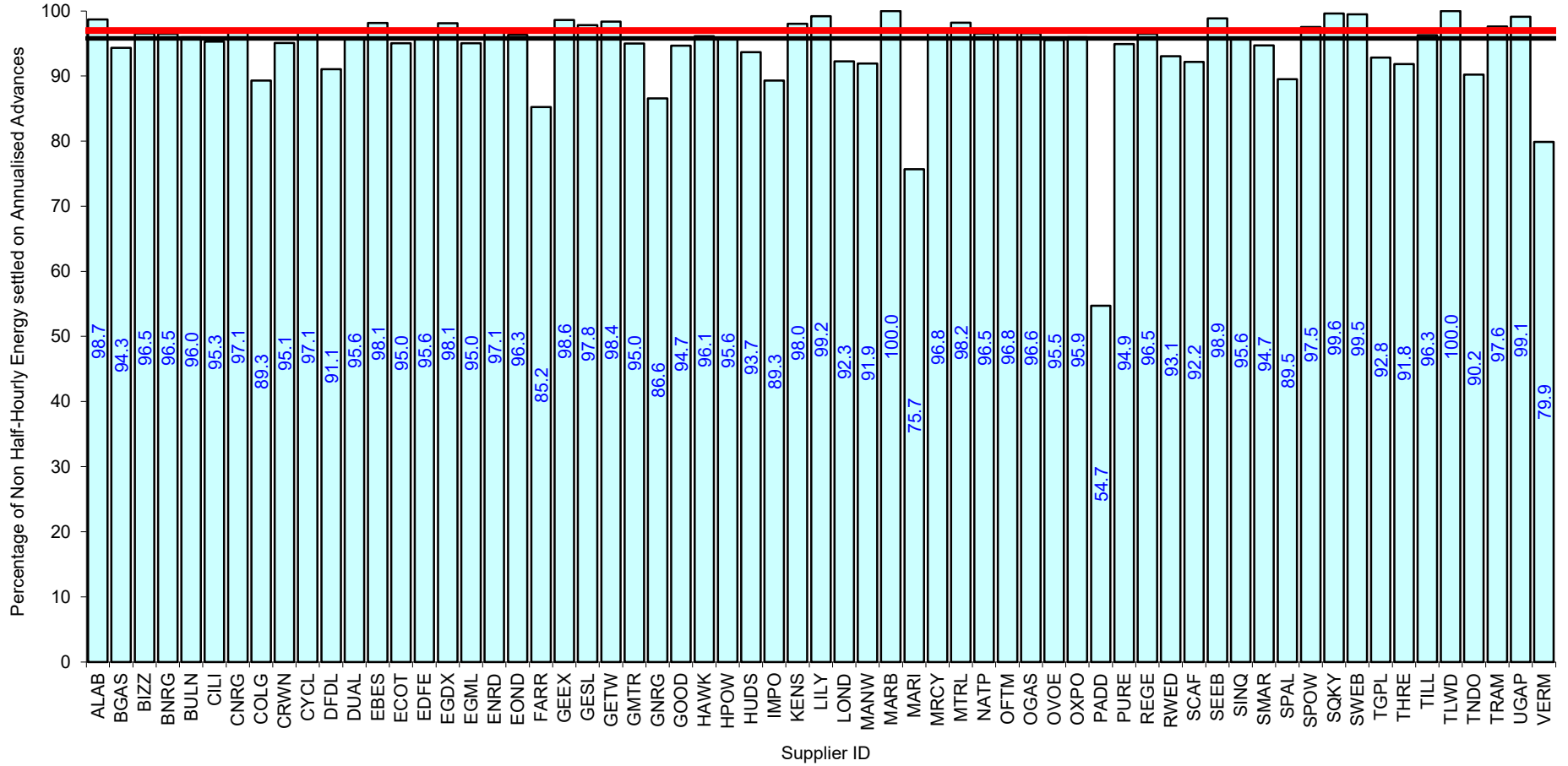
Supplier Performance    
  GSP Group Average (96.29%)    
  Industry Standard (97%)

Serial SP08a. GSP Group: North Western (\_G). Reporting Period 1 to 31 July 2025 . Reconciliation Run: RF

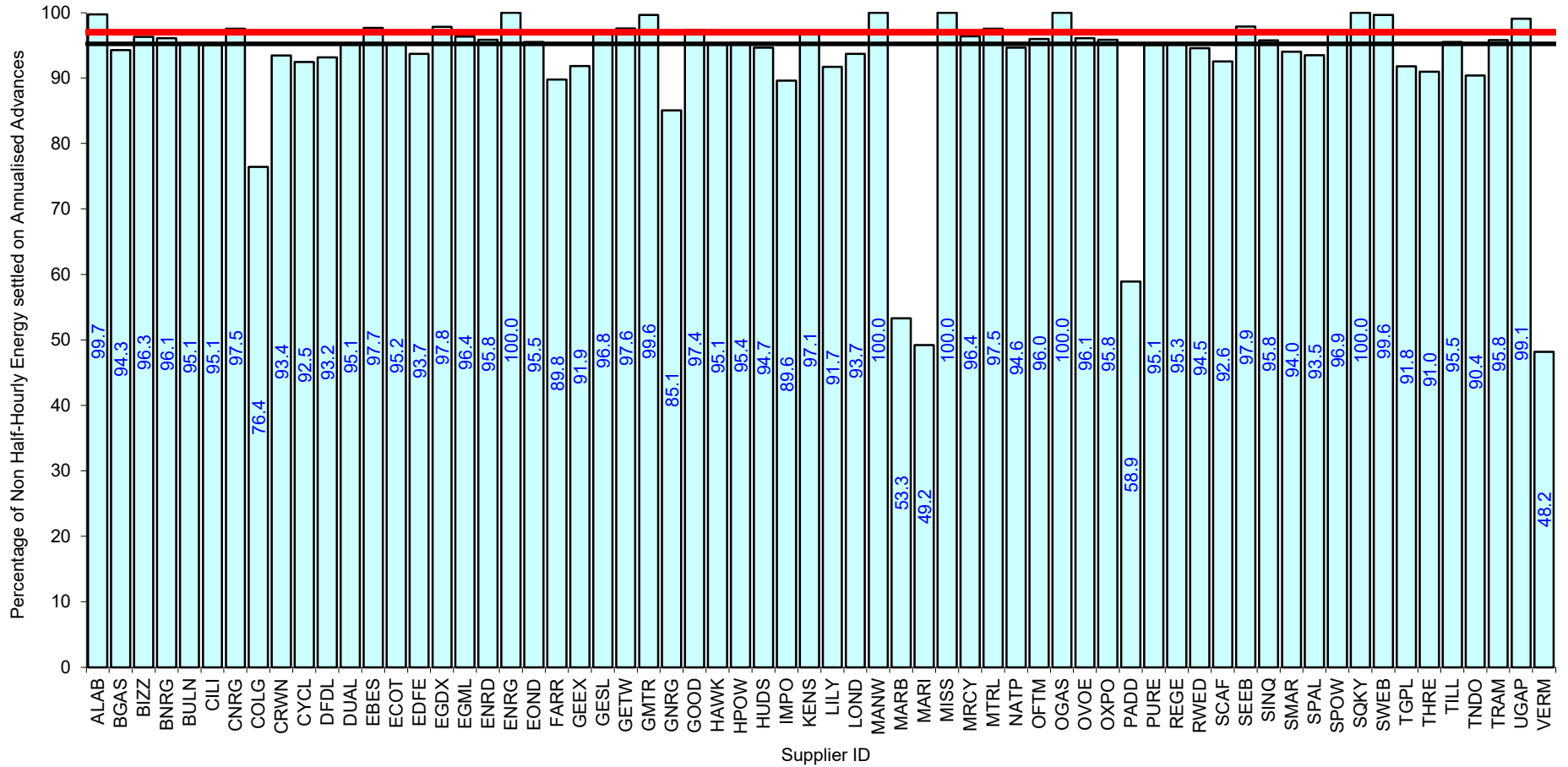


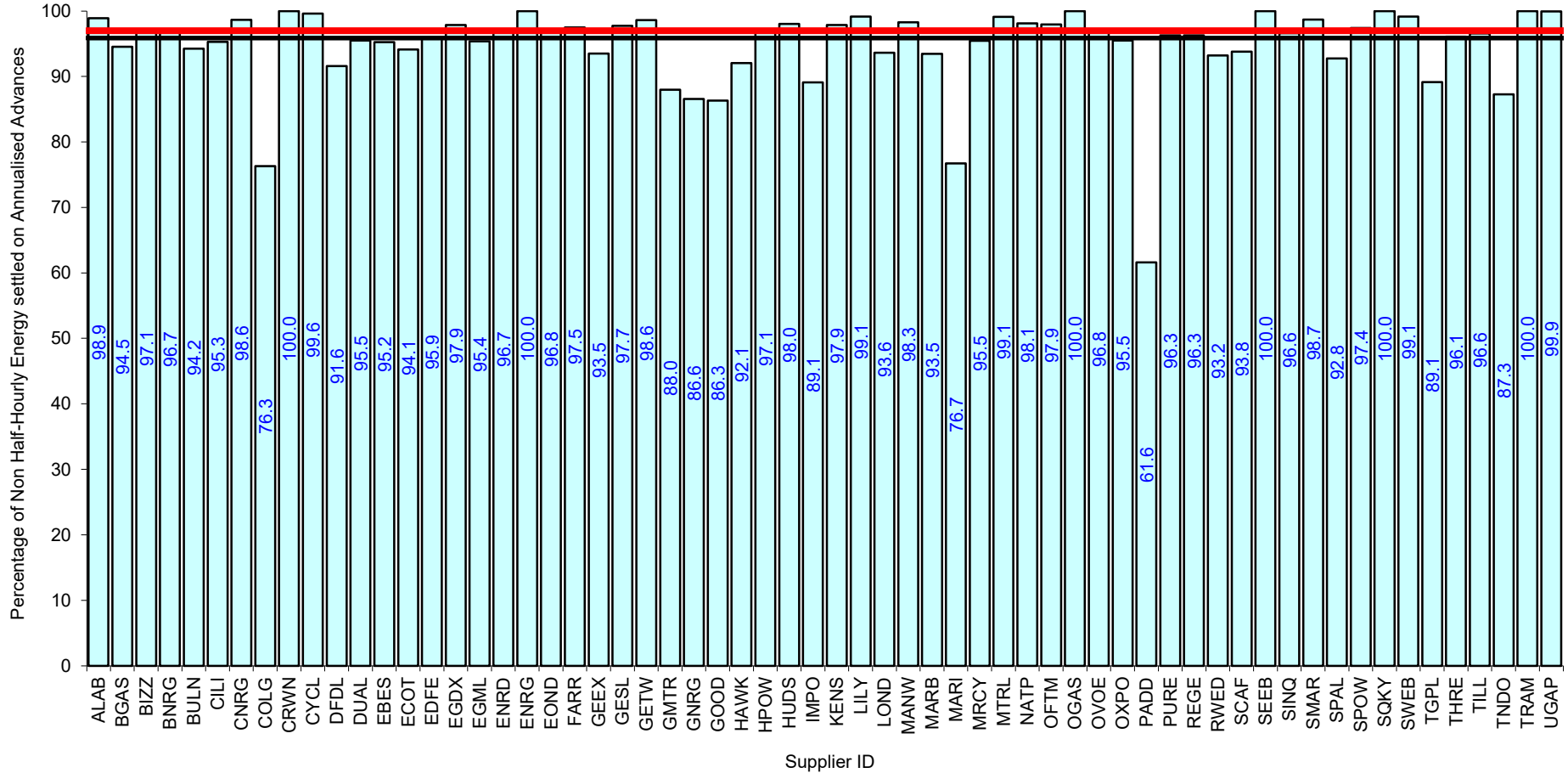
Supplier Performance
  GSP Group Average (95.39%)
  Industry Standard (97%)

Serial SP08a. GSP Group: Southern (\_H). Reporting Period 1 to 31 July 2025 . Reconciliation Run: RF

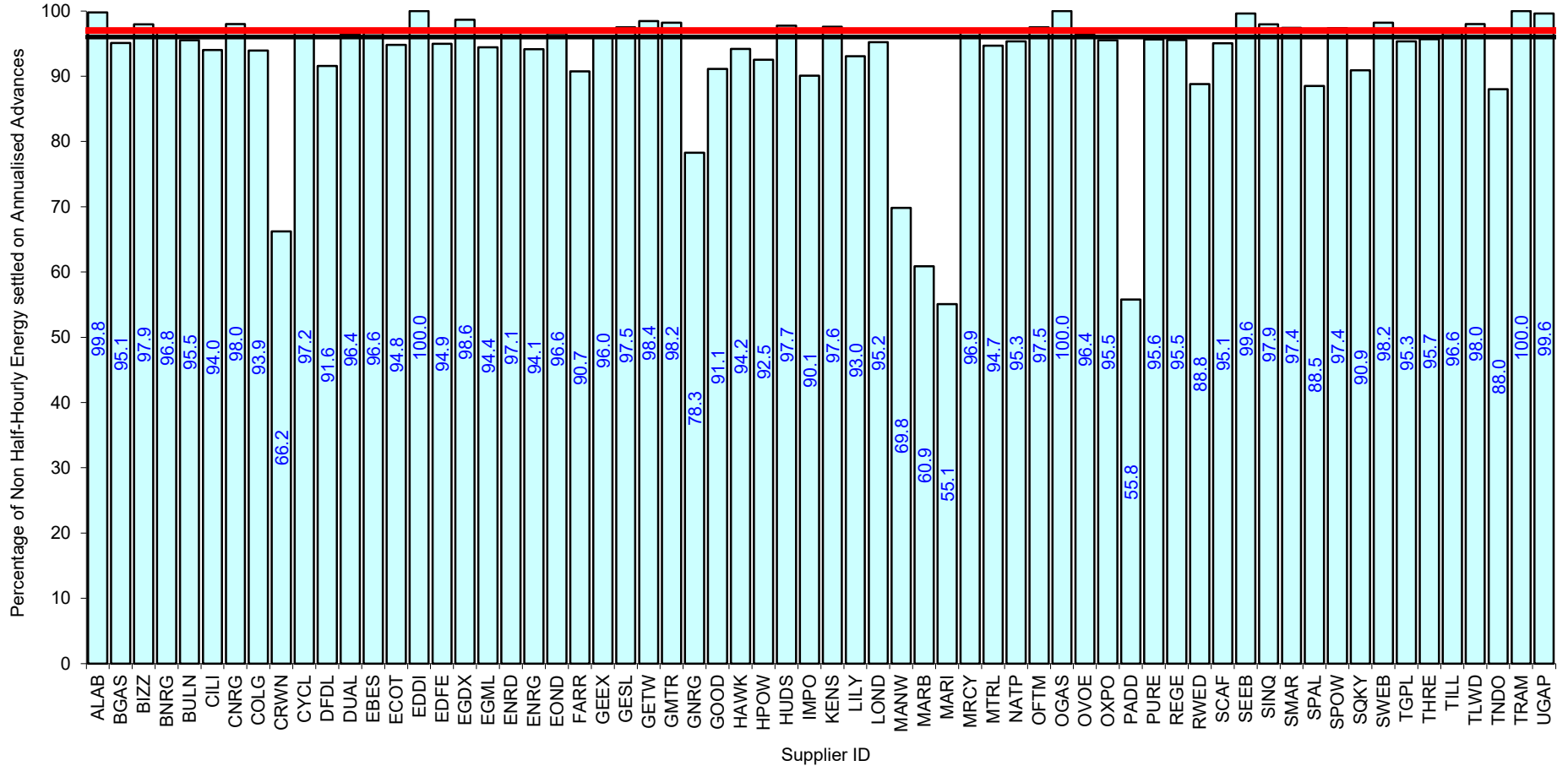


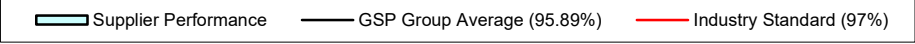
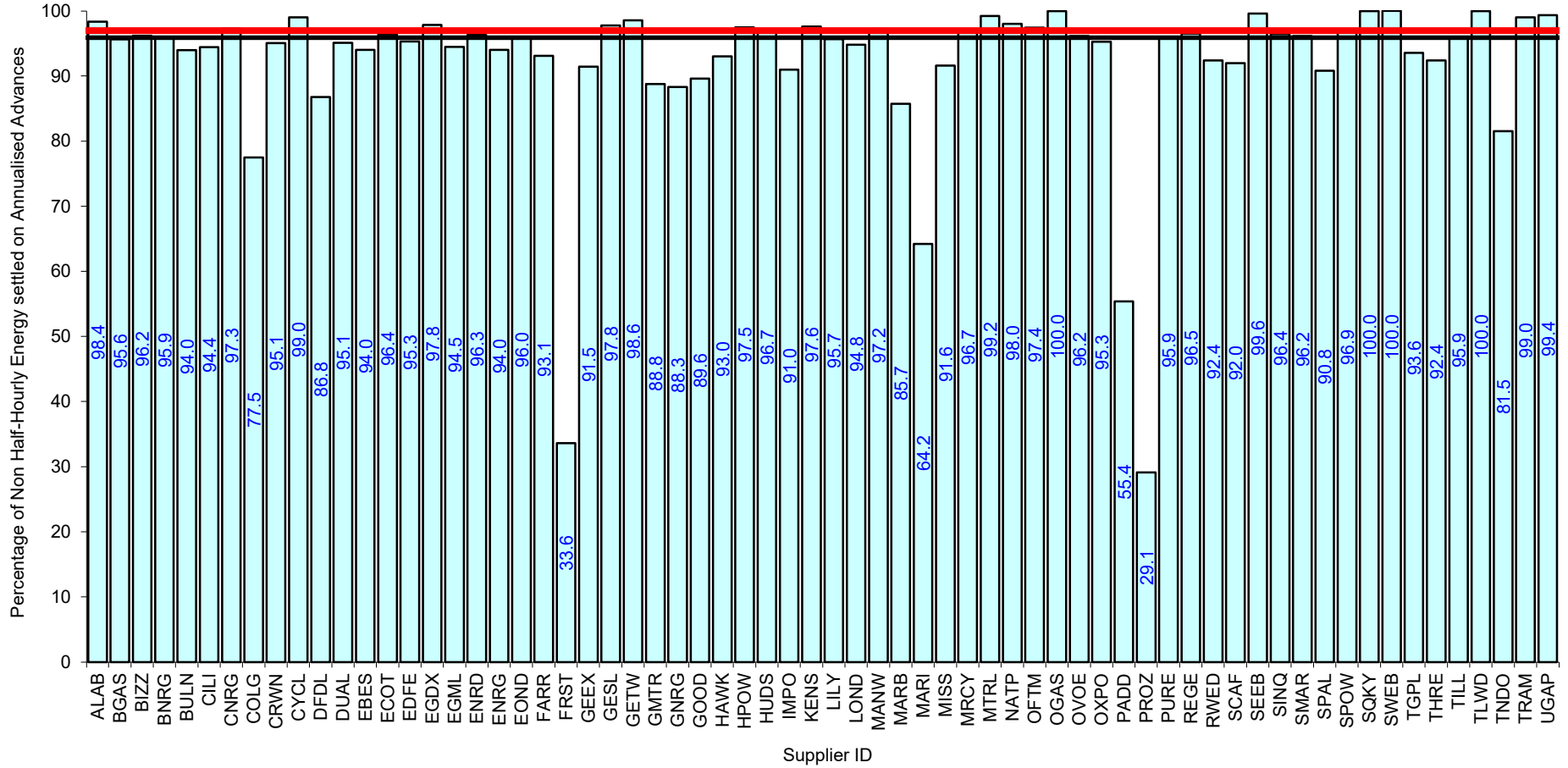
Serial SP08a. GSP Group: South Eastern (\_J). Reporting Period 1 to 31 July 2025 . Reconciliation Run: RF





Serial SP08a. GSP Group: South Western (\_L). Reporting Period 1 to 31 July 2025 . Reconciliation Run: RF





Serial SP08a. GSP Group: South Scotland (\_N). Reporting Period 1 to 31 July 2025 . Reconciliation Run: RF

