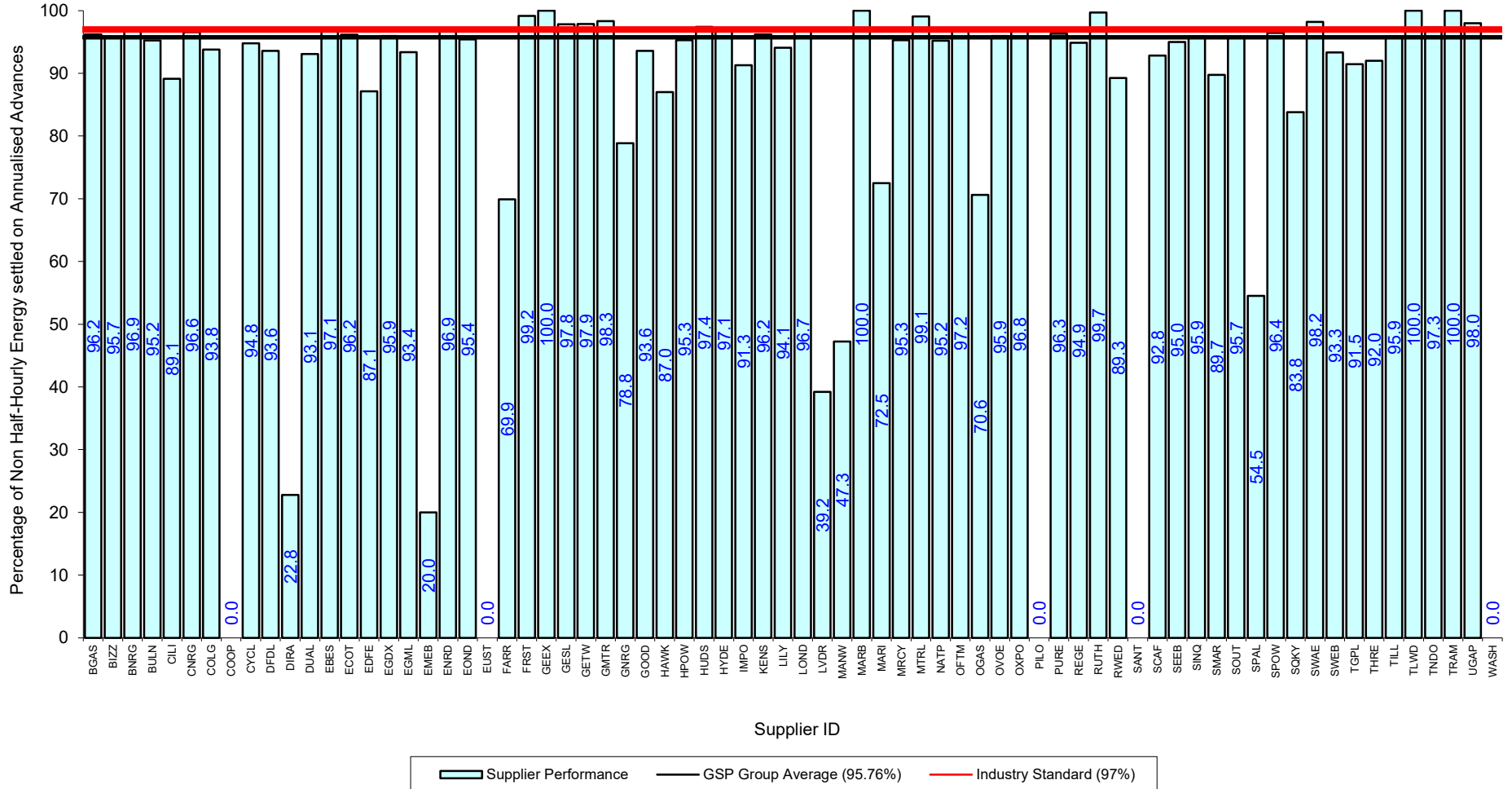
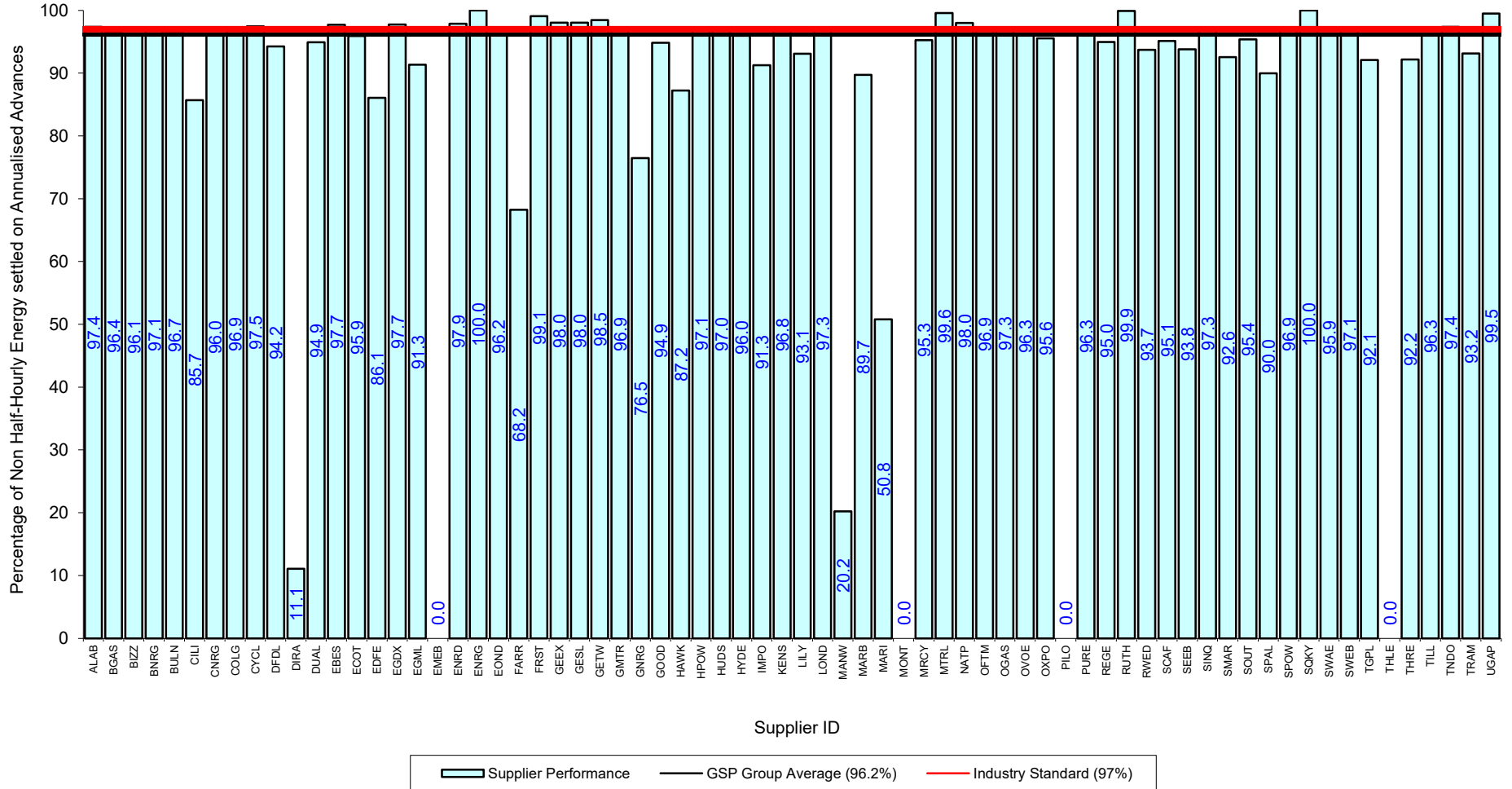


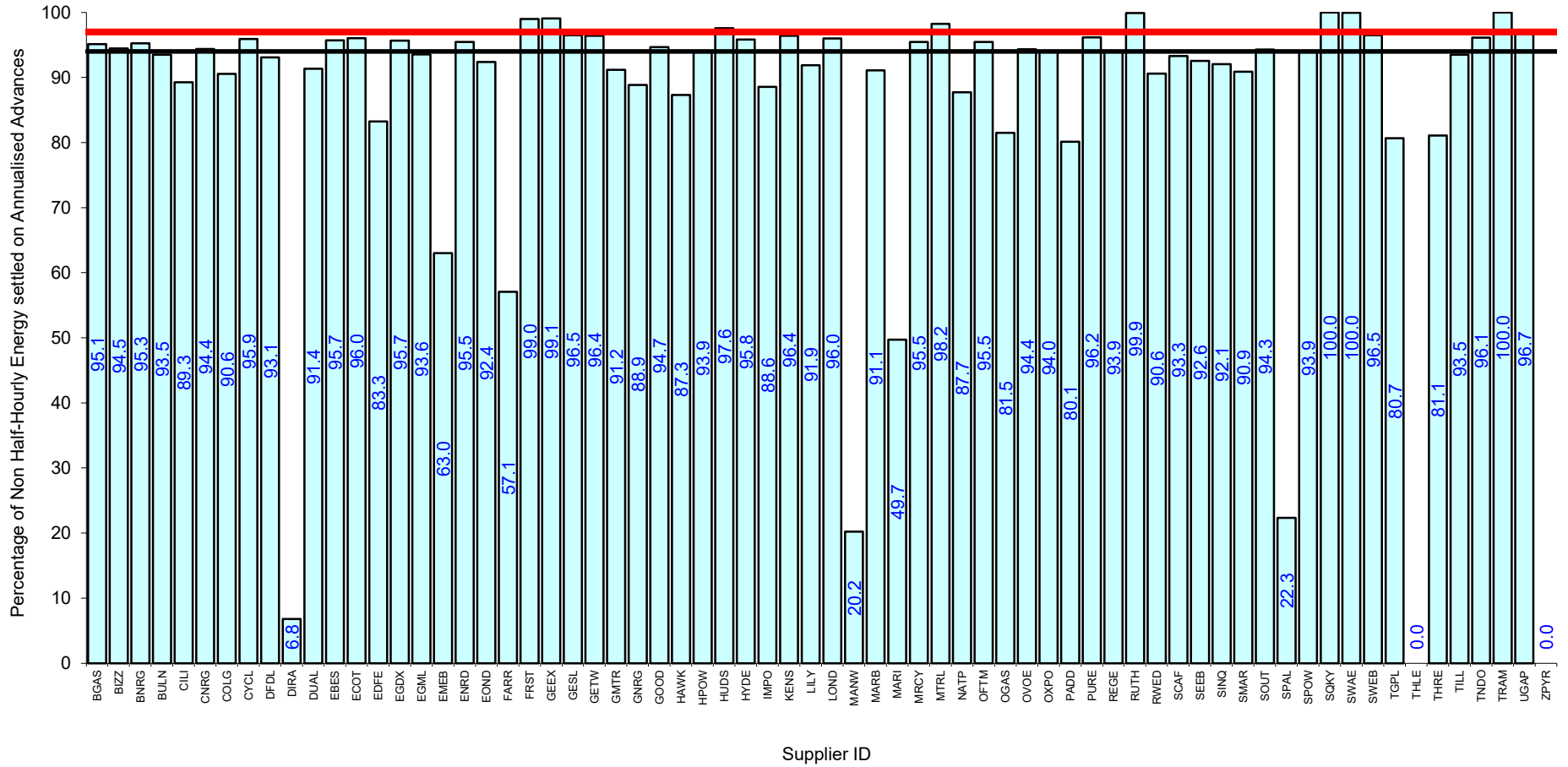
Serial SP08a. GSP Group: Eastern (_A). Reporting Period 1 to 31 July 2024 . Reconciliation Run: RF



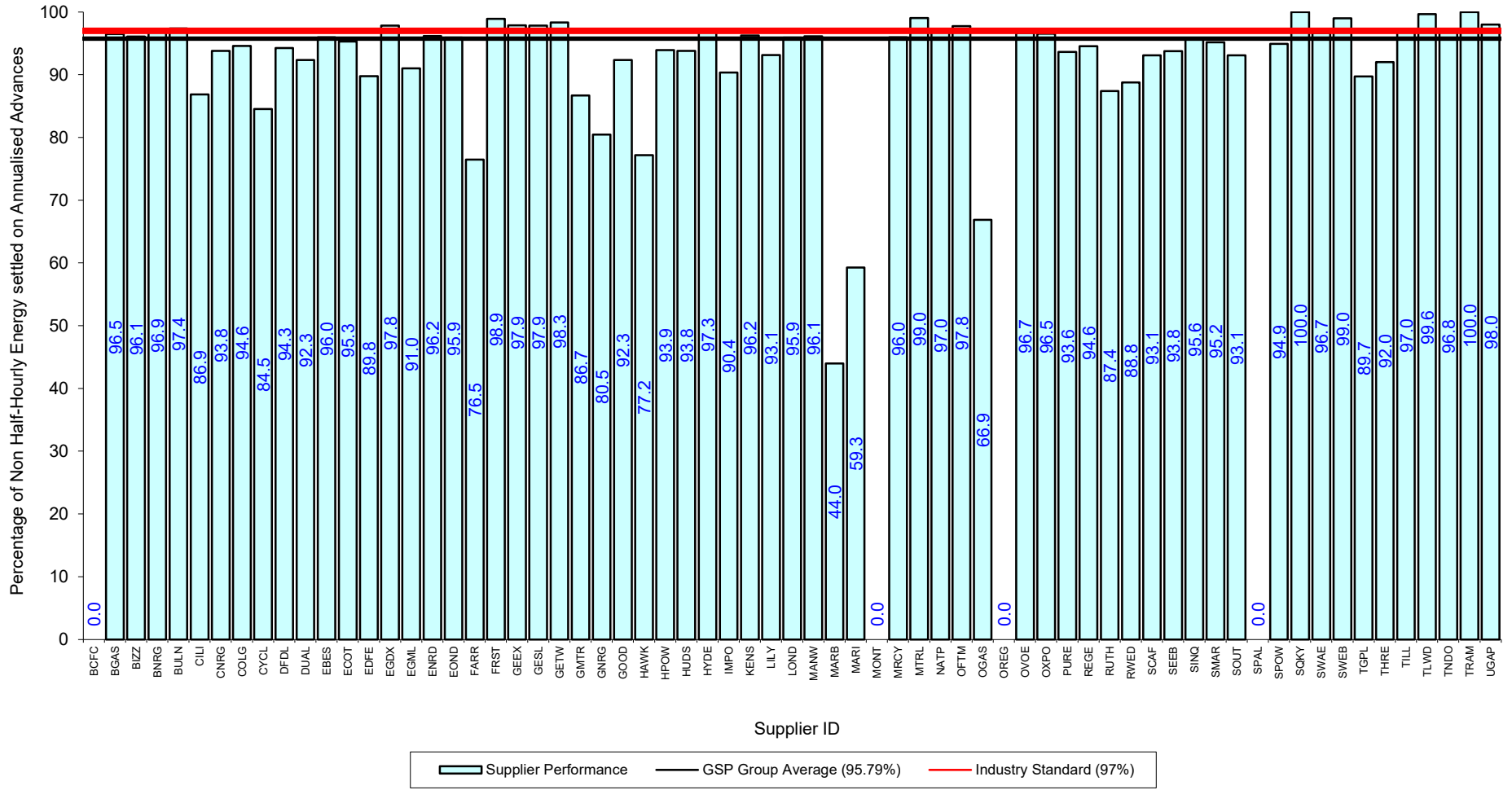
Serial SP08a. GSP Group: East Midlands (_B). Reporting Period 1 to 31 July 2024 . Reconciliation Run: RF



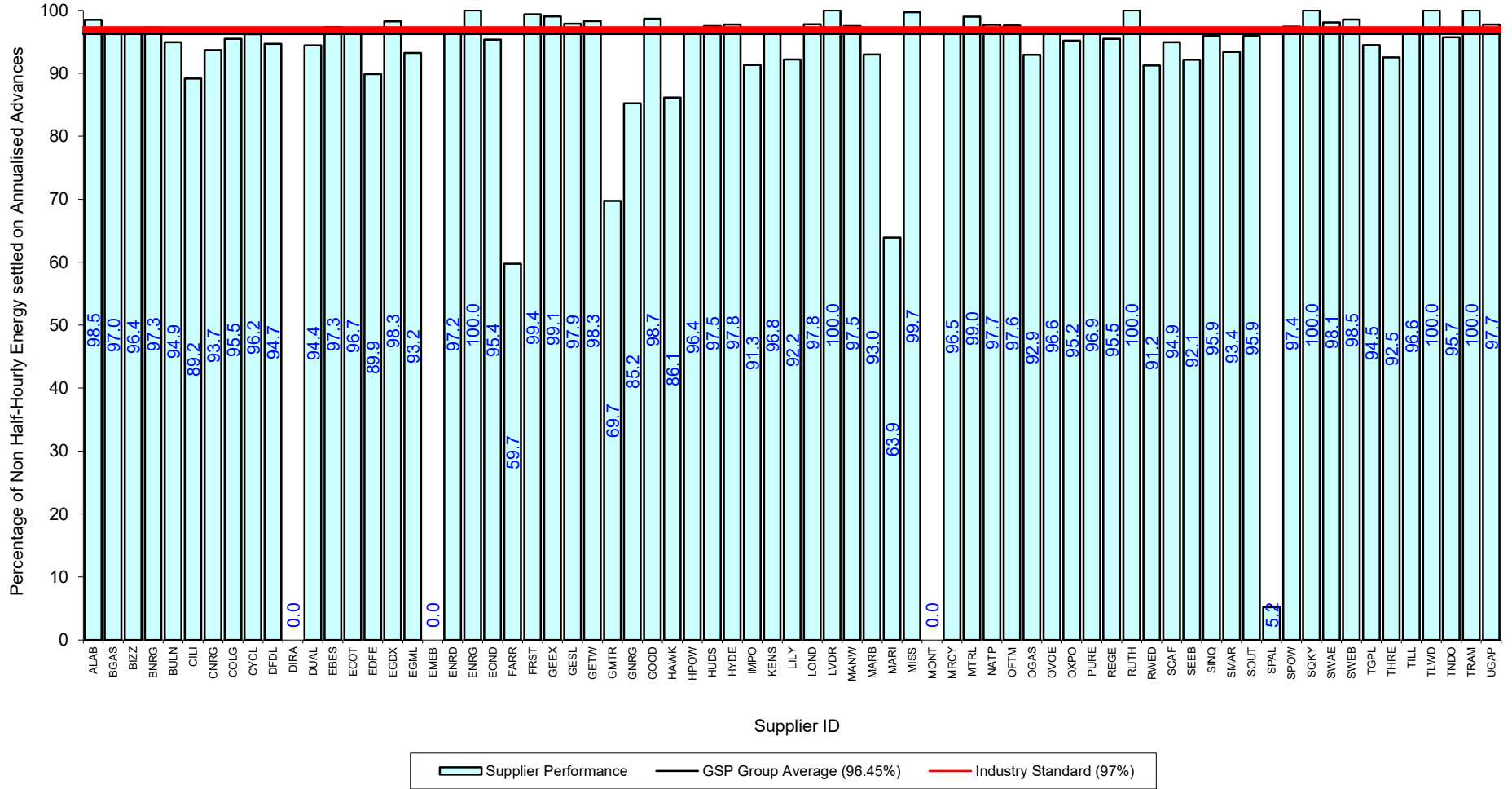
Serial SP08a. GSP Group: London (_C). Reporting Period 1 to 31 July 2024 . Reconciliation Run: RF



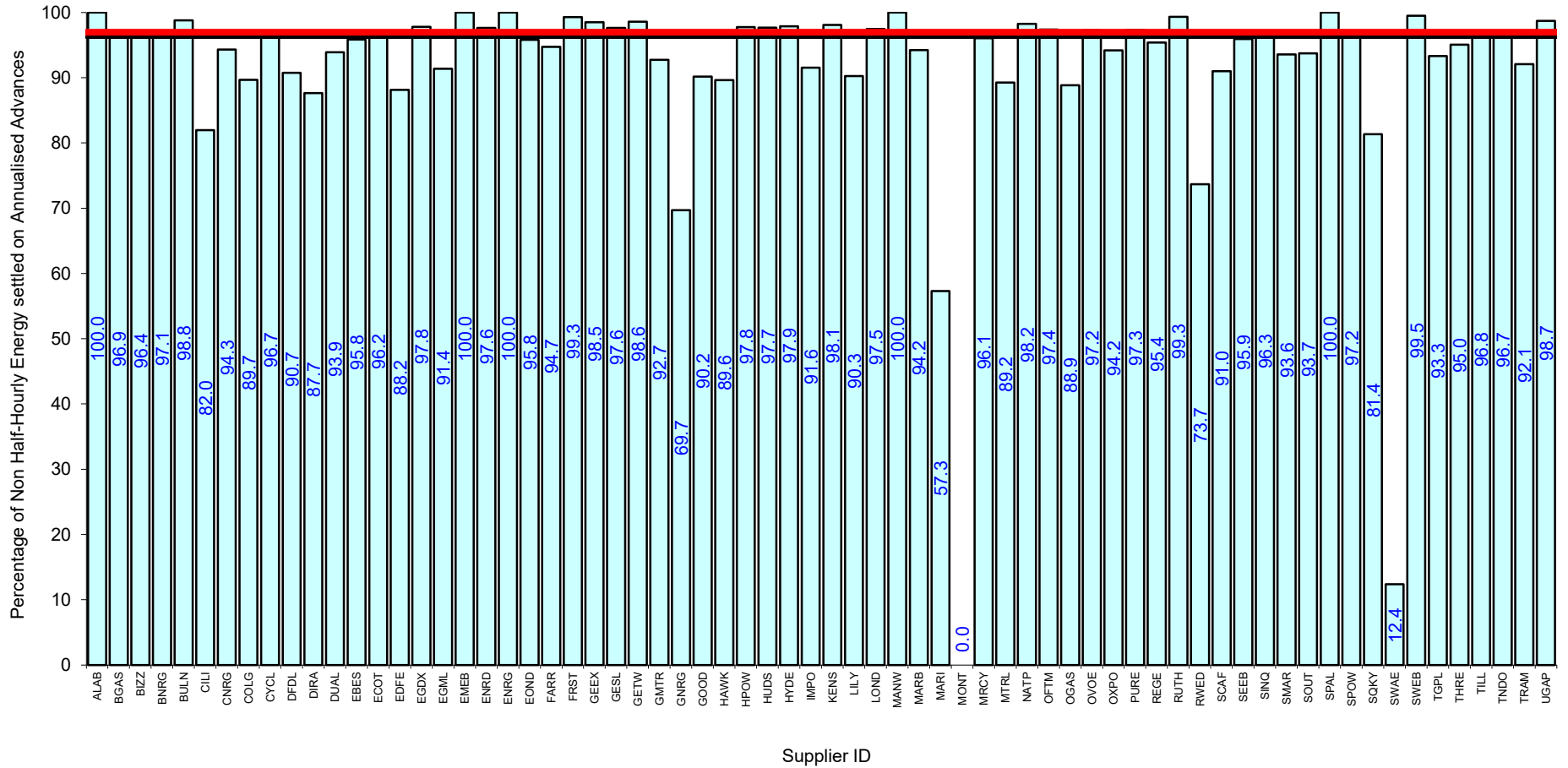
Serial SP08a. GSP Group: Merseyside and North Wales (_D). Reporting Period 1 to 31 July 2024 . Reconciliation Run: RF



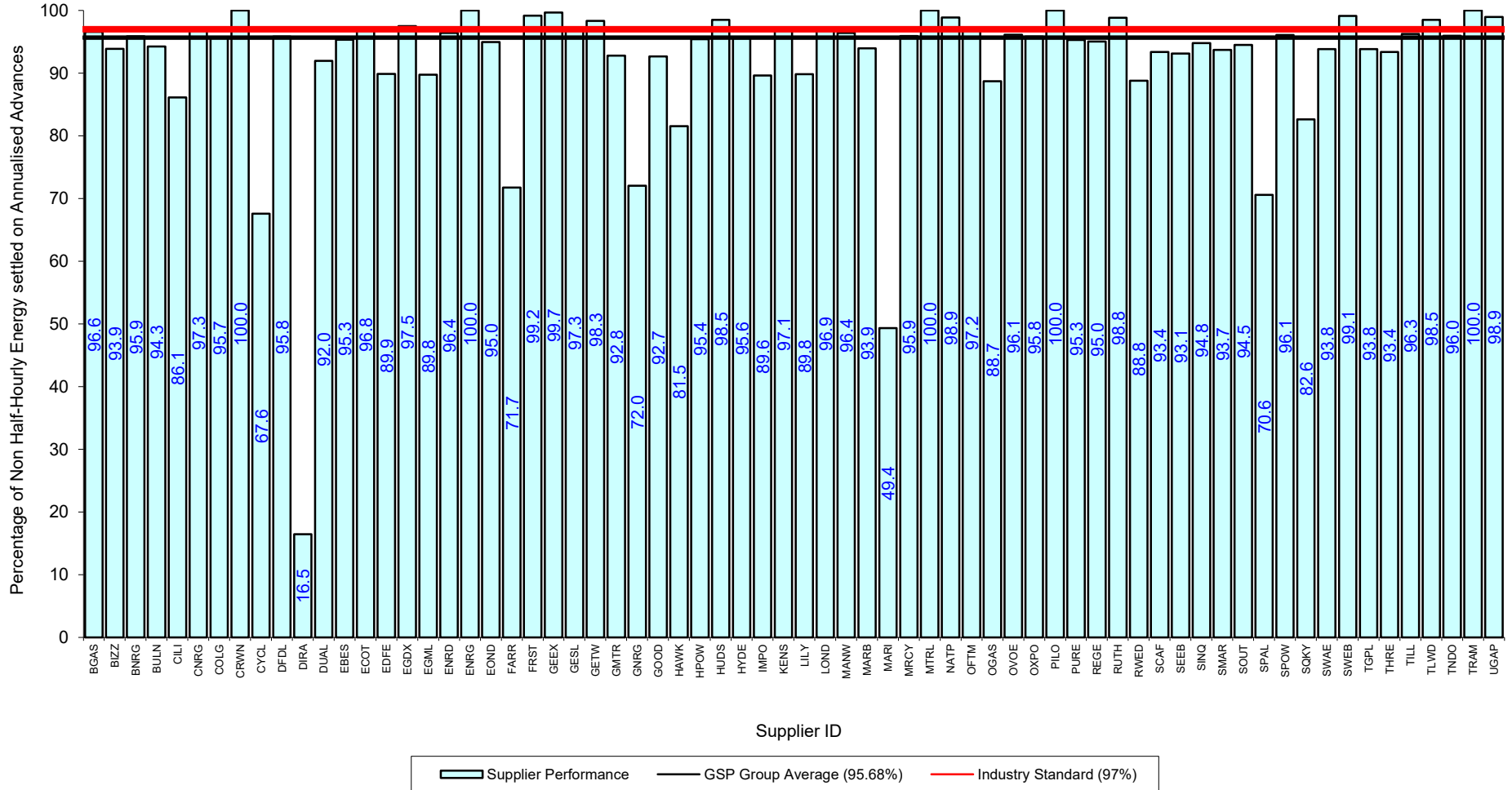
Serial SP08a. GSP Group: Midlands (_E). Reporting Period 1 to 31 July 2024 . Reconciliation Run: RF



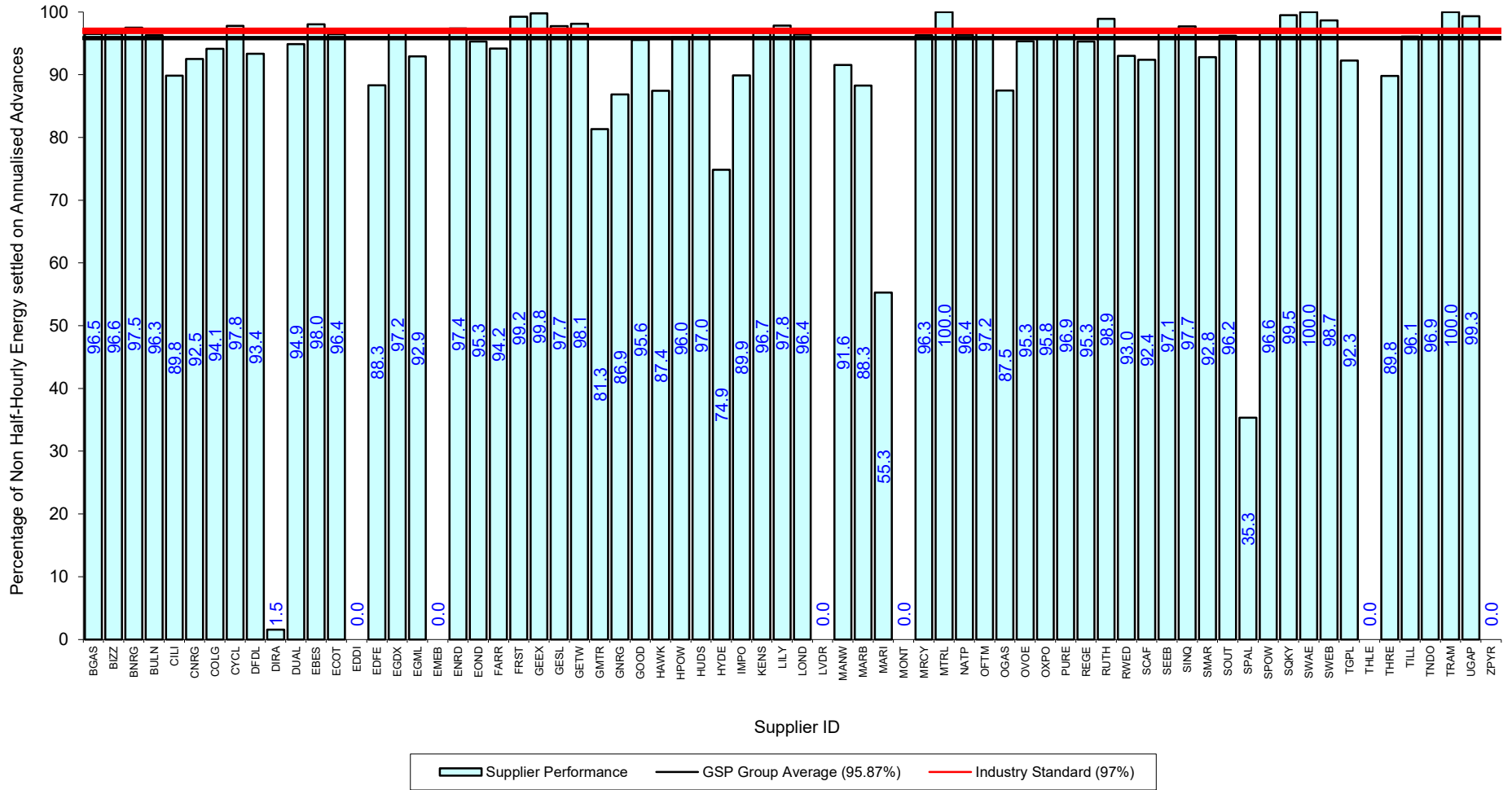
Serial SP08a. GSP Group: Northern (_F). Reporting Period 1 to 31 July 2024 . Reconciliation Run: RF



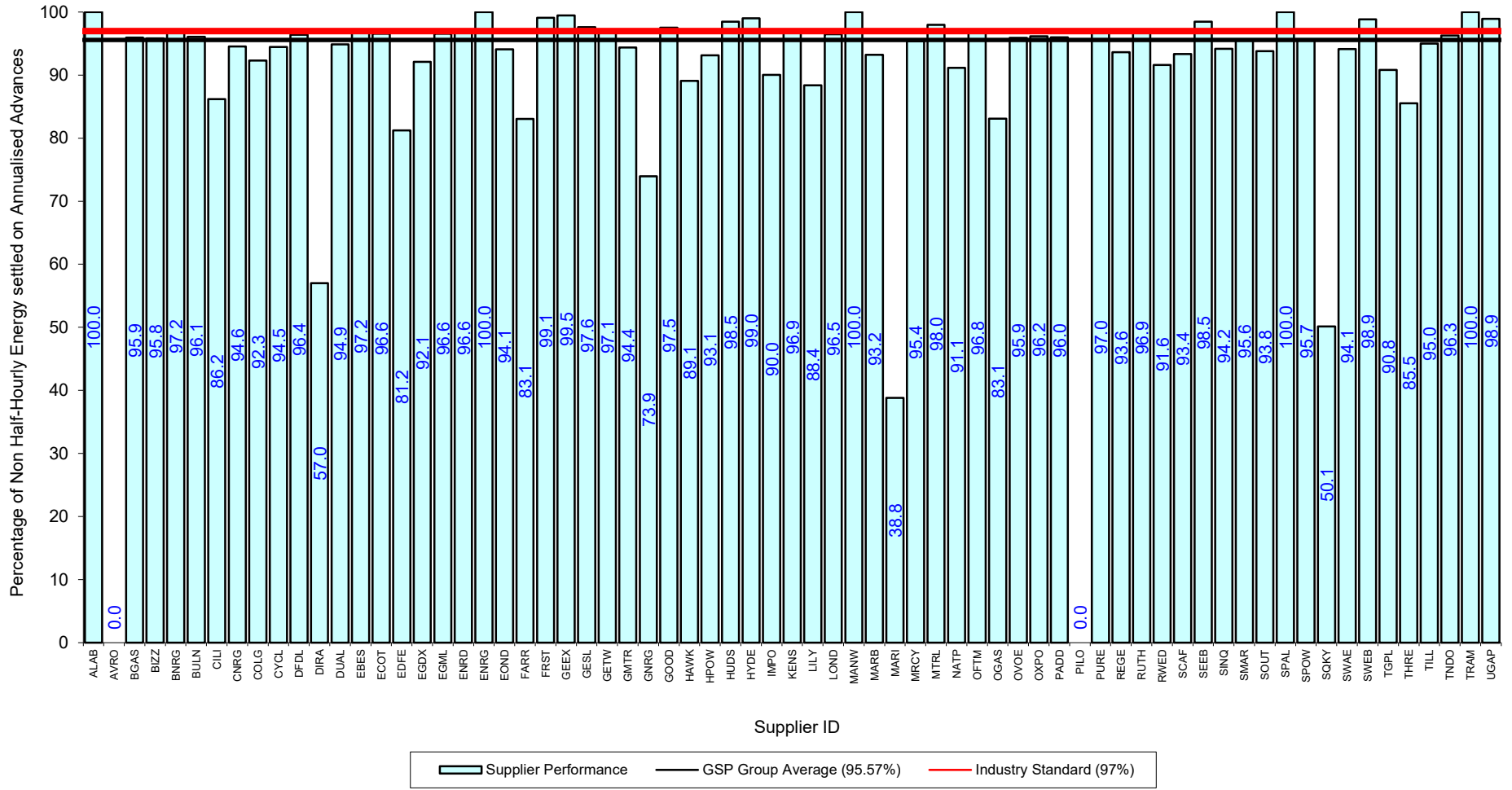
Serial SP08a. GSP Group: North Western (_G). Reporting Period 1 to 31 July 2024 . Reconciliation Run: RF



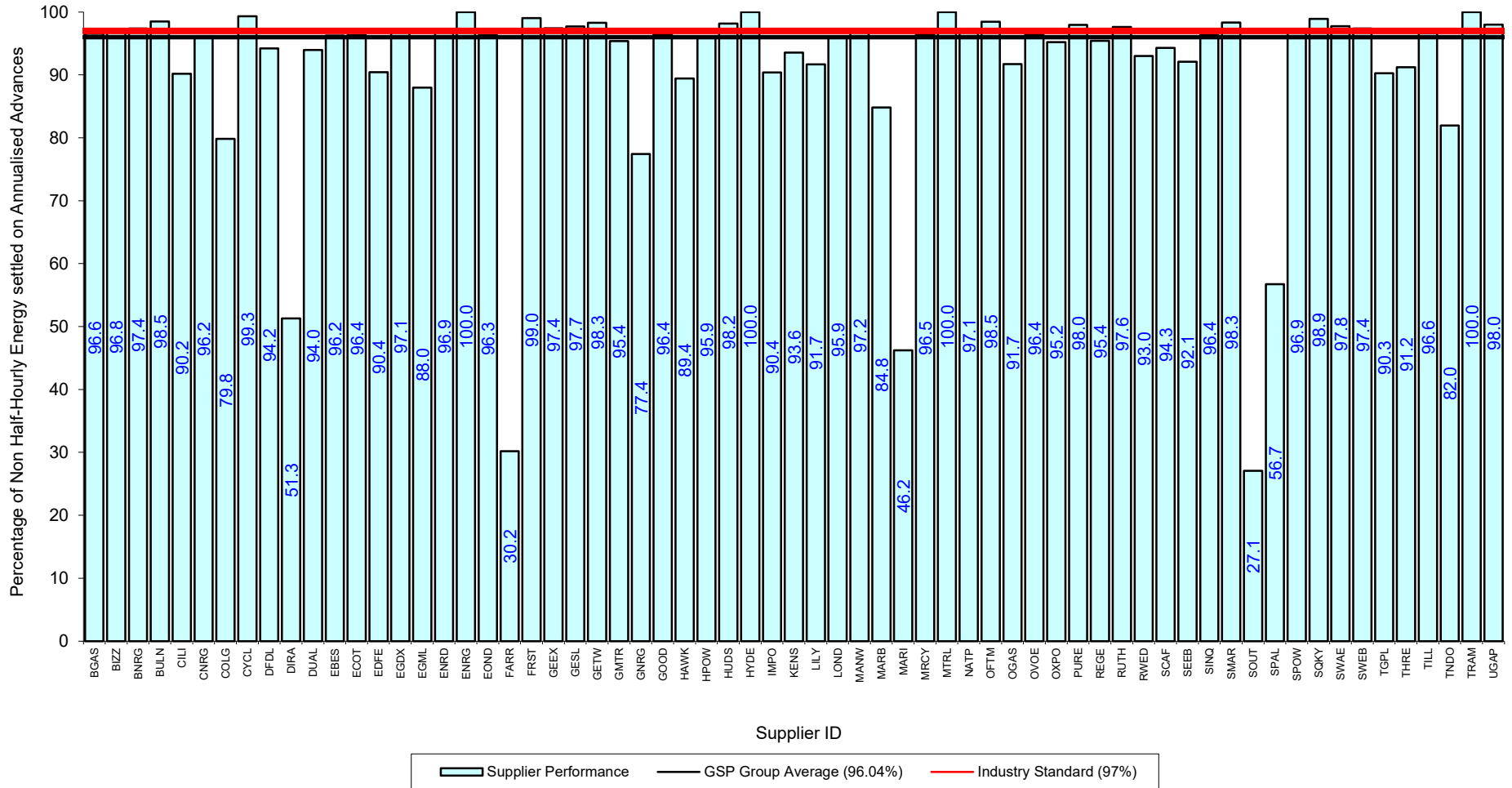
Serial SP08a. GSP Group: Southern (_H). Reporting Period 1 to 31 July 2024 . Reconciliation Run: RF



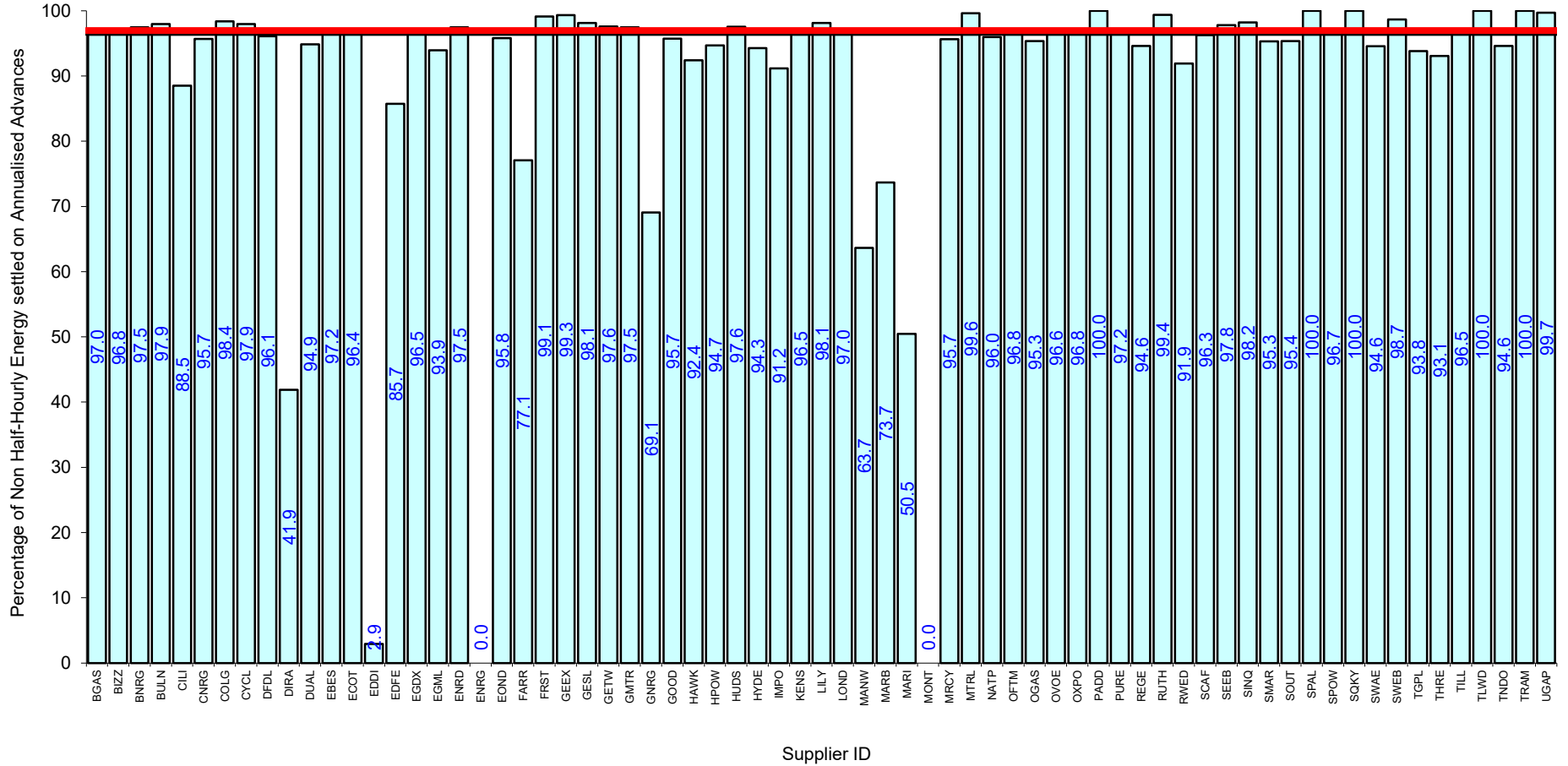
Serial SP08a. GSP Group: South Eastern (_J). Reporting Period 1 to 31 July 2024 . Reconciliation Run: RF



Serial SP08a. GSP Group: South Wales (_K). Reporting Period 1 to 31 July 2024 . Reconciliation Run: RF

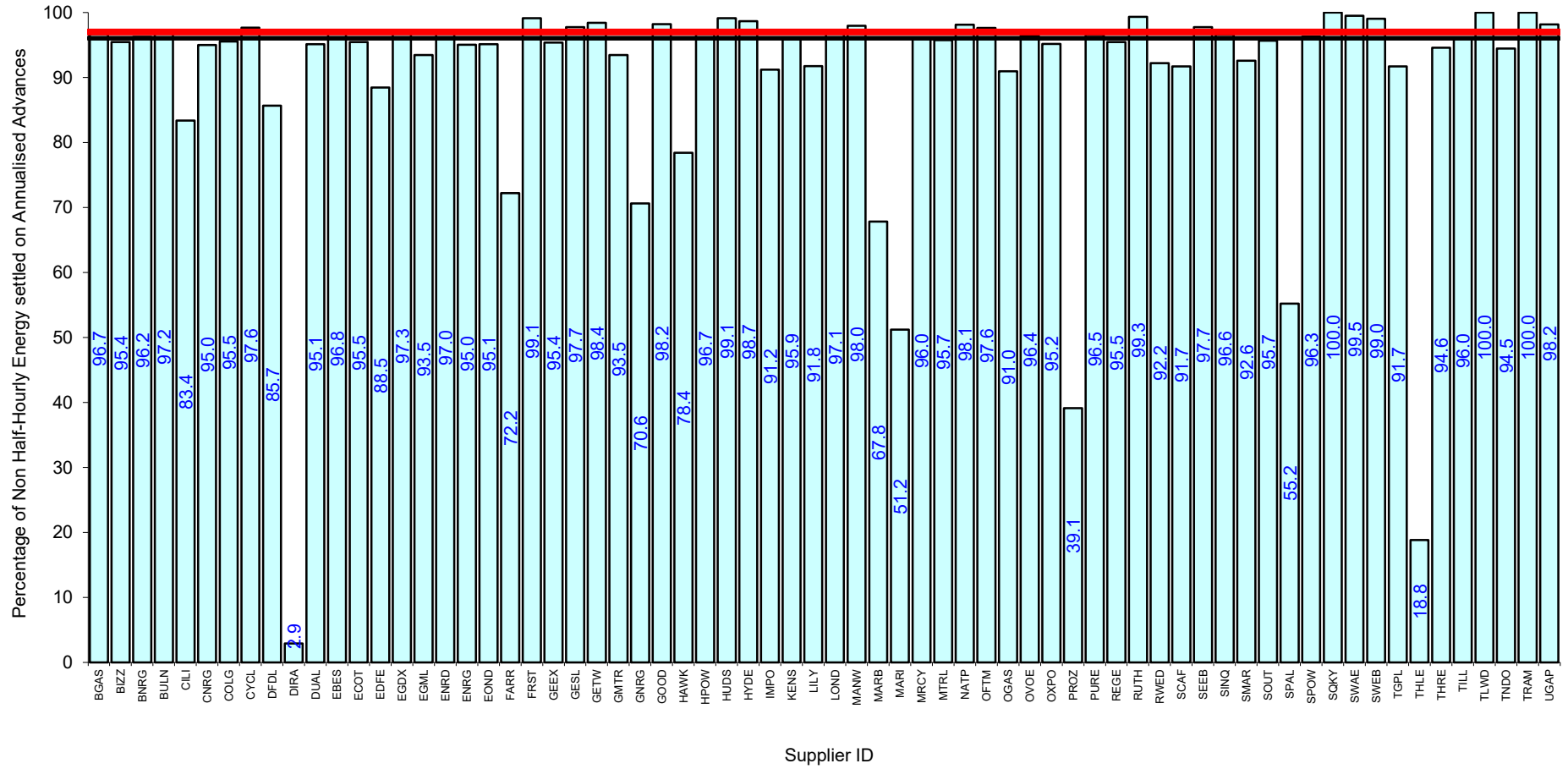


Serial SP08a. GSP Group: South Western (_L). Reporting Period 1 to 31 July 2024 . Reconciliation Run: RF



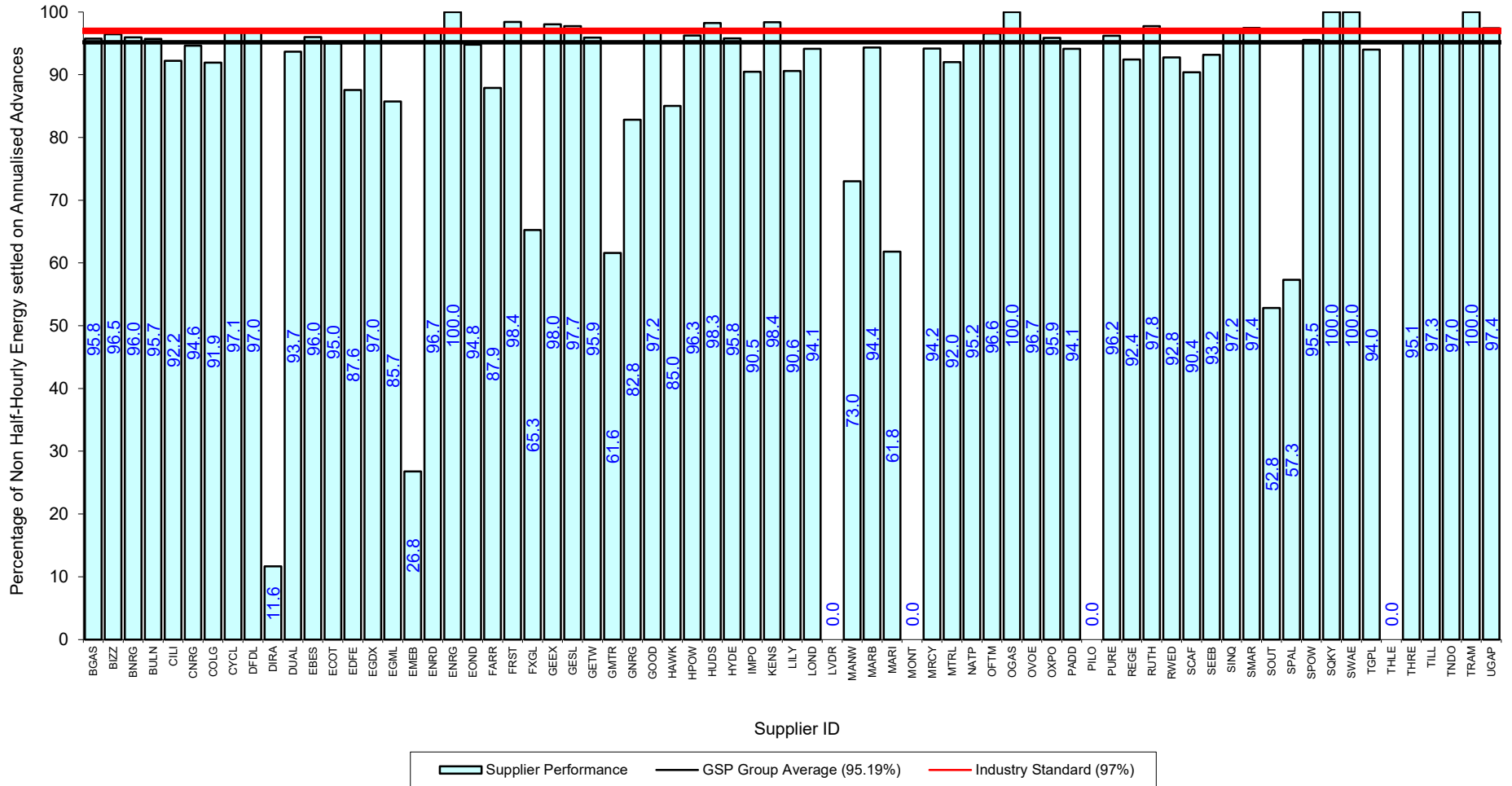
█ Supplier Performance
 — GSP Group Average (96.52%)
 — Industry Standard (97%)

Serial SP08a. GSP Group: Yorkshire (_M). Reporting Period 1 to 31 July 2024 . Reconciliation Run: RF

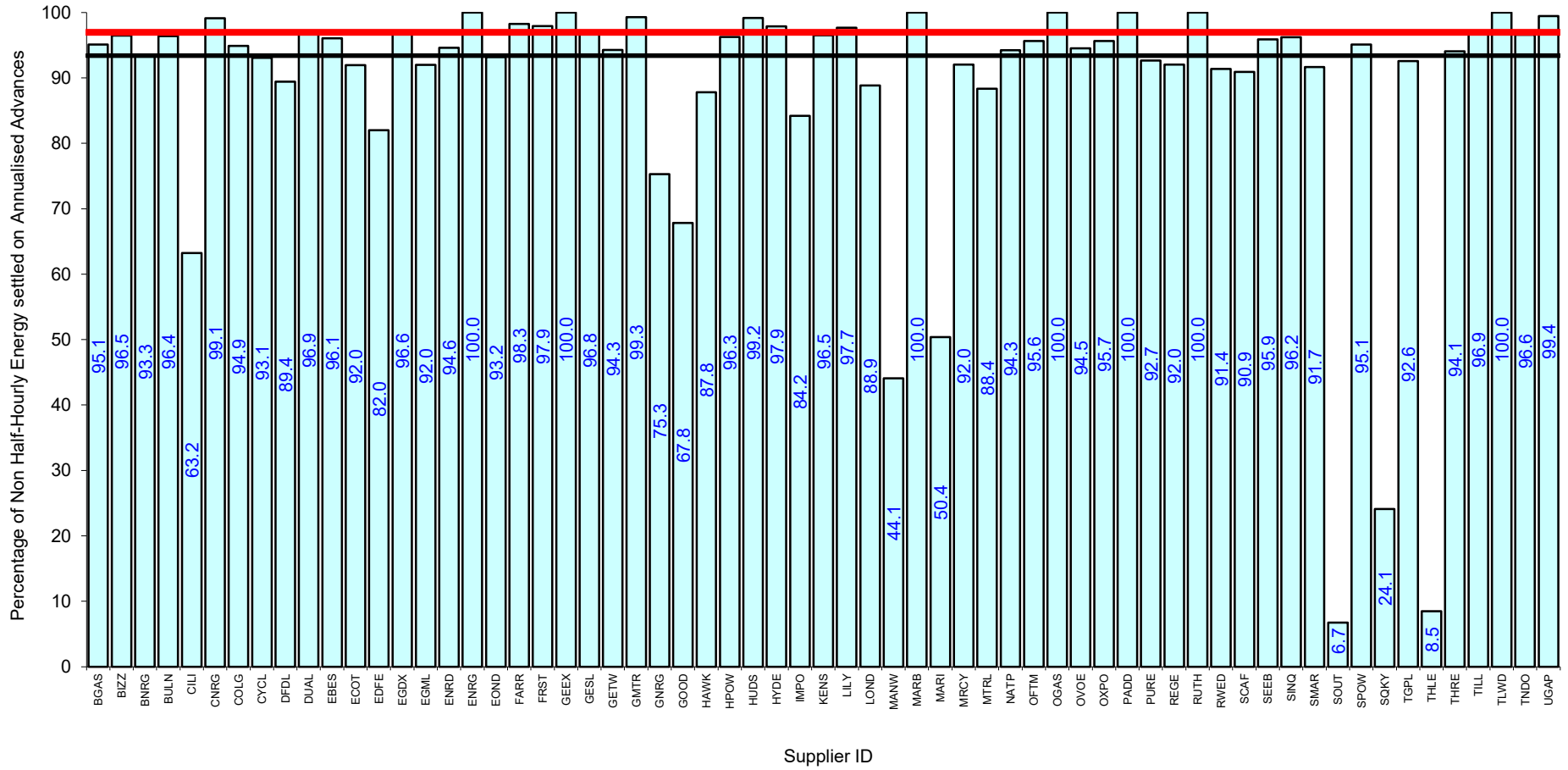


█ Supplier Performance
 — GSP Group Average (96.04%)
 — Industry Standard (97%)

Serial SP08a. GSP Group: South Scotland (_N). Reporting Period 1 to 31 July 2024 . Reconciliation Run: RF



Serial SP08a. GSP Group: North Scotland (_P). Reporting Period 1 to 31 July 2024 . Reconciliation Run: RF



Supplier Performance
 — GSP Group Average (93.43%)
— Industry Standard (97%)