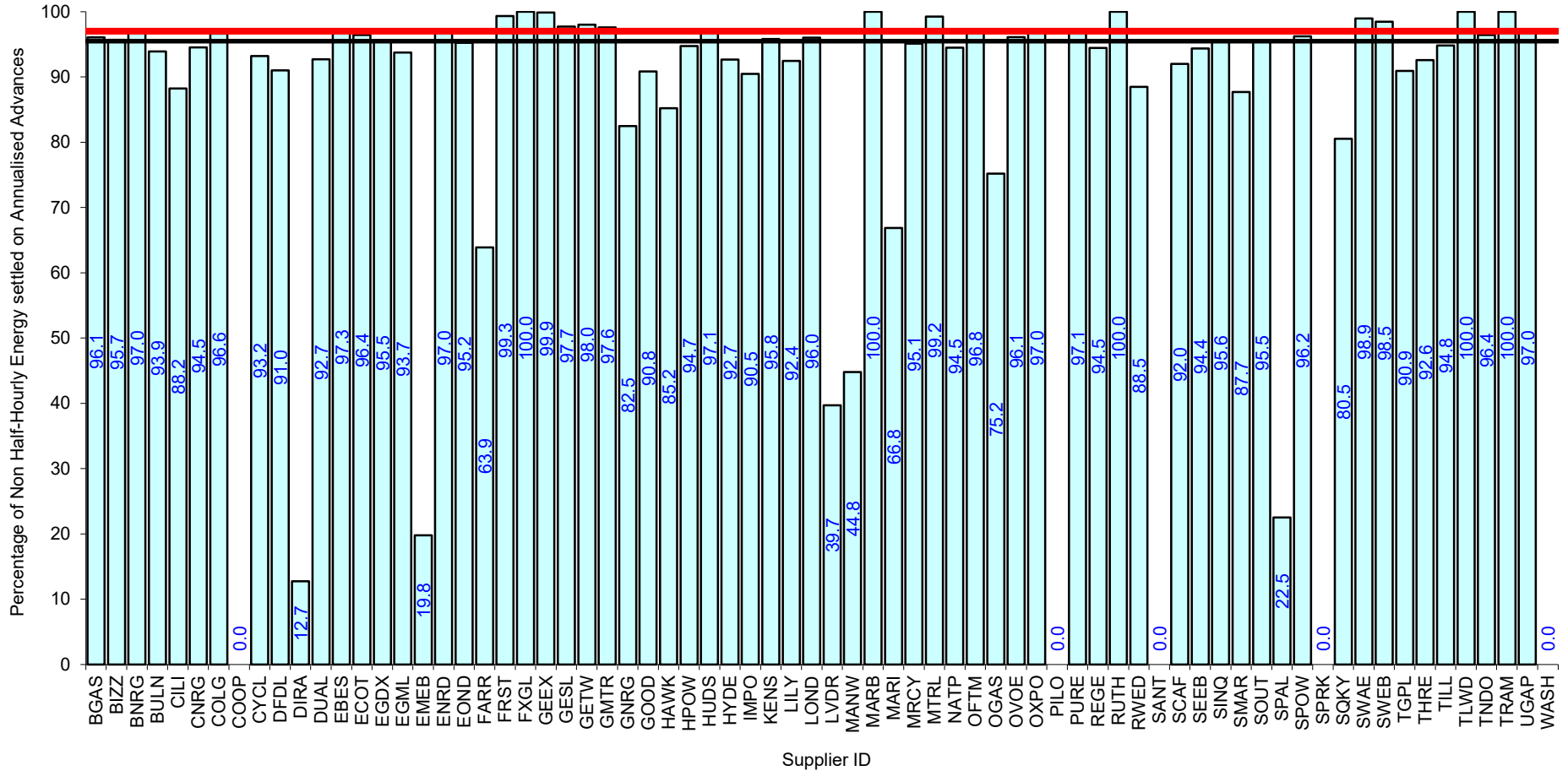
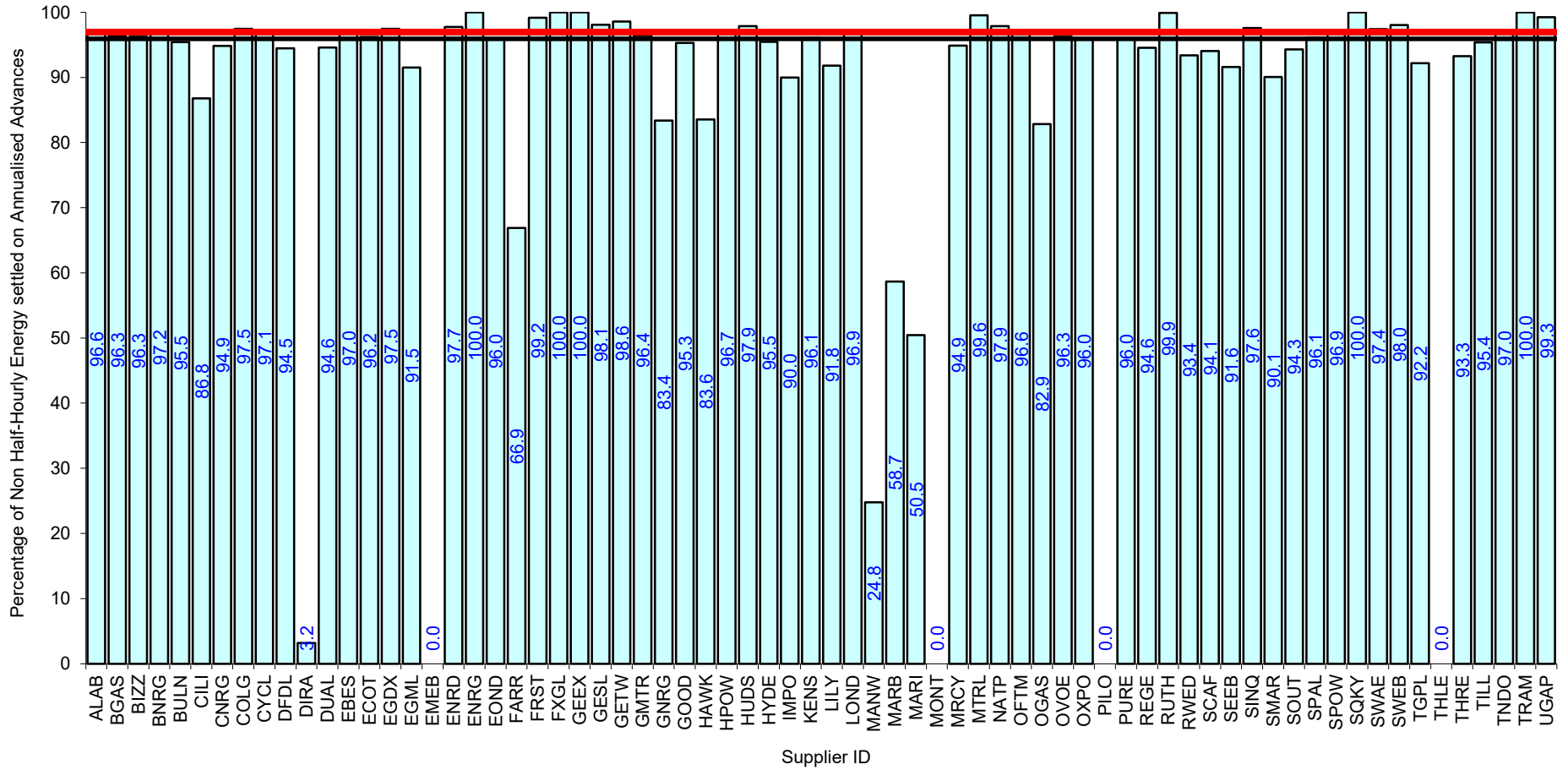


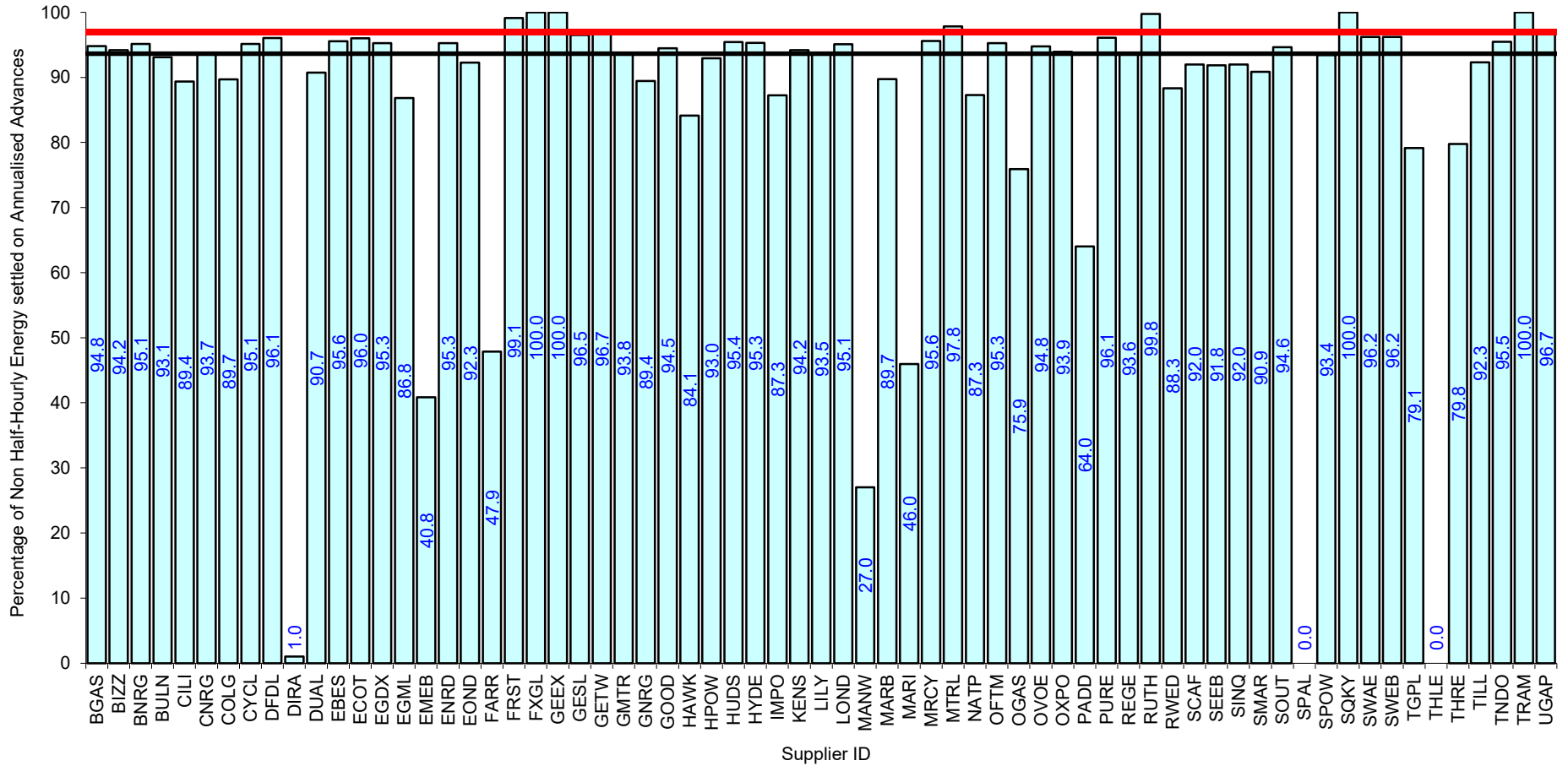
Serial SP08a. GSP Group: Eastern (_A). Reporting Period 1 to 31 May 2024 . Reconciliation Run: RF

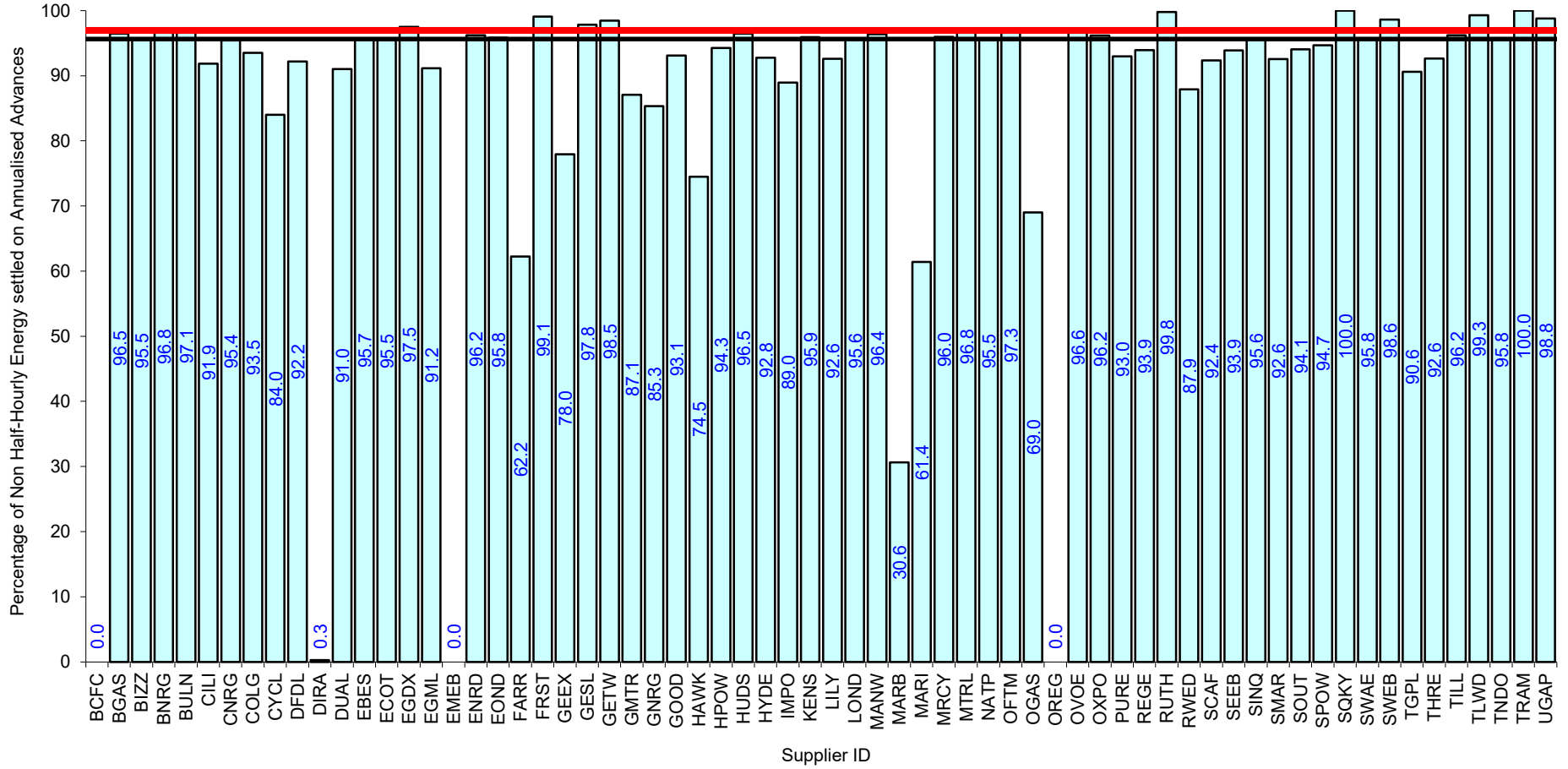


Serial SP08a. GSP Group: East Midlands (_B). Reporting Period 1 to 31 May 2024 . Reconciliation Run: RF

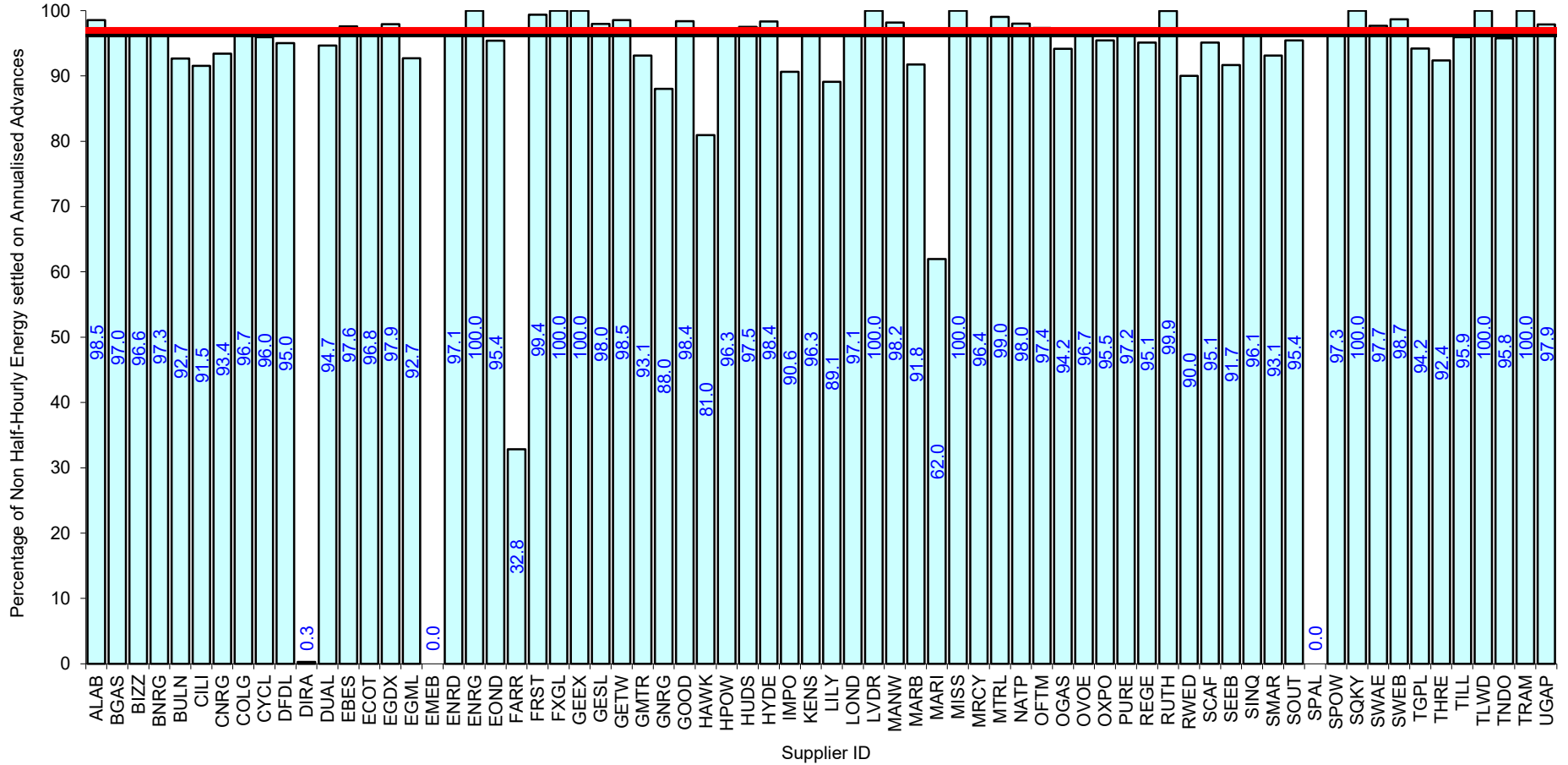


Serial SP08a. GSP Group: London (_C). Reporting Period 1 to 31 May 2024 . Reconciliation Run: RF

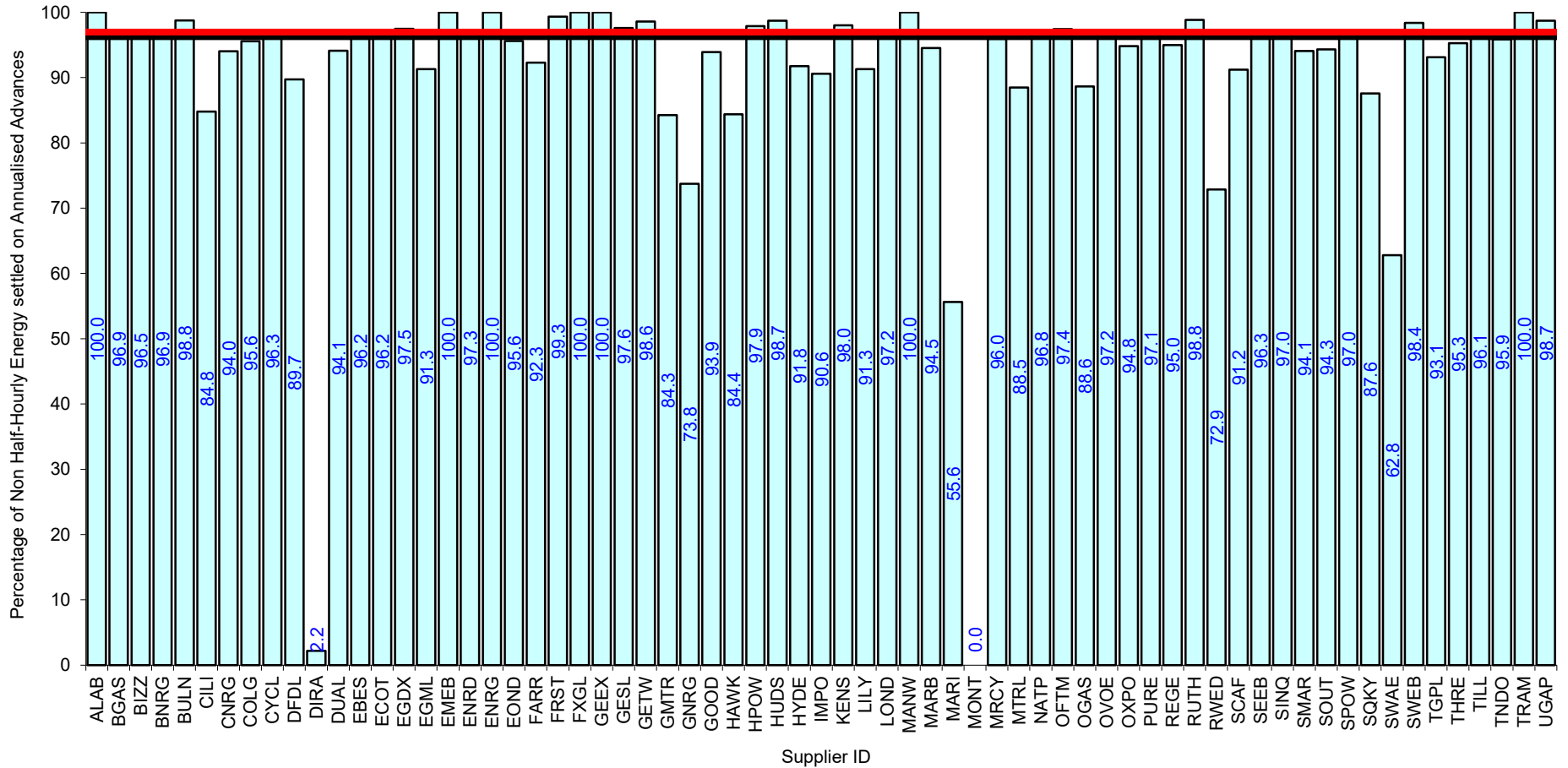




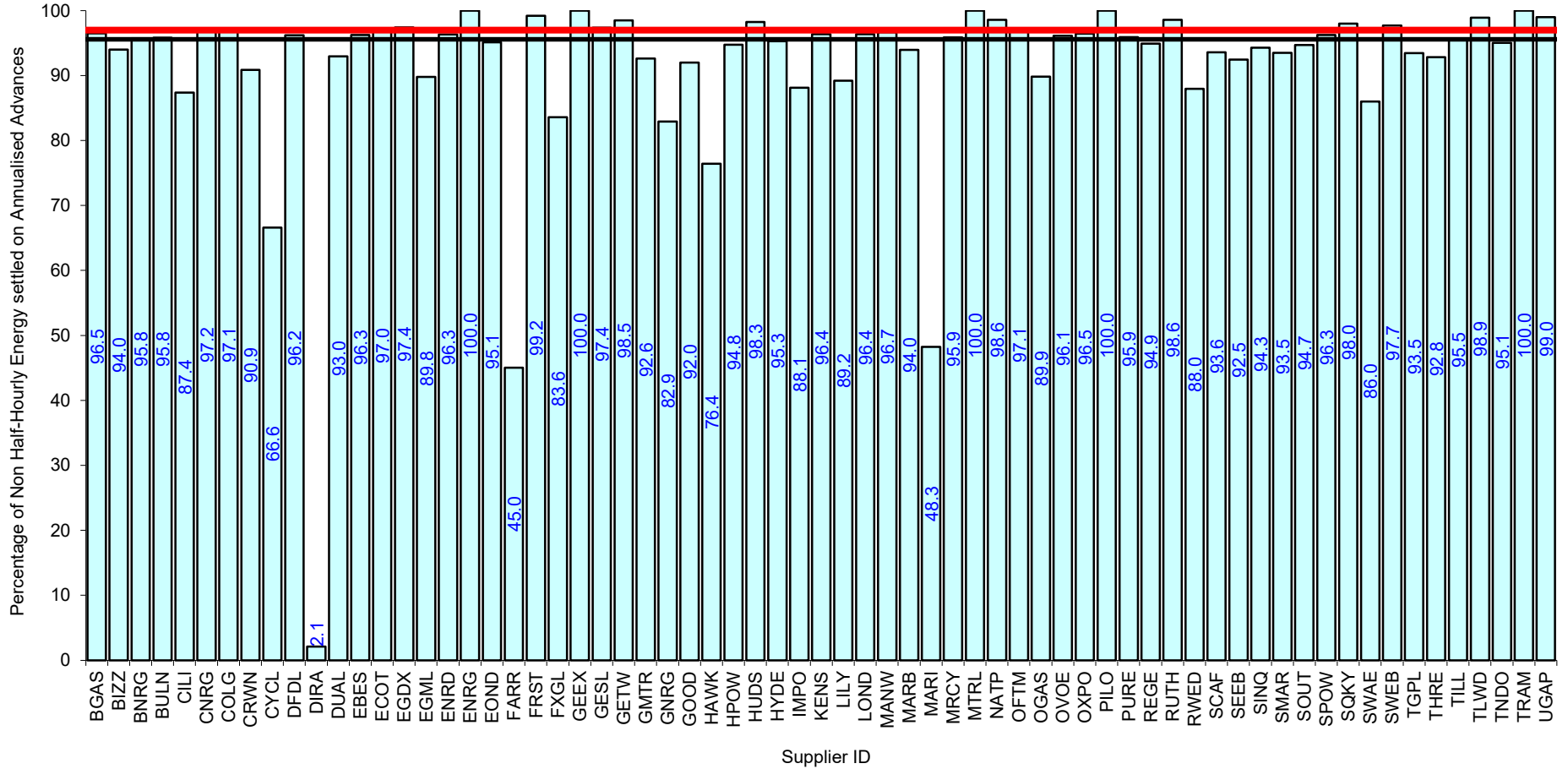
Serial SP08a. GSP Group: Midlands (_E). Reporting Period 1 to 31 May 2024 . Reconciliation Run: RF



Serial SP08a. GSP Group: Northern (_F). Reporting Period 1 to 31 May 2024 . Reconciliation Run: RF

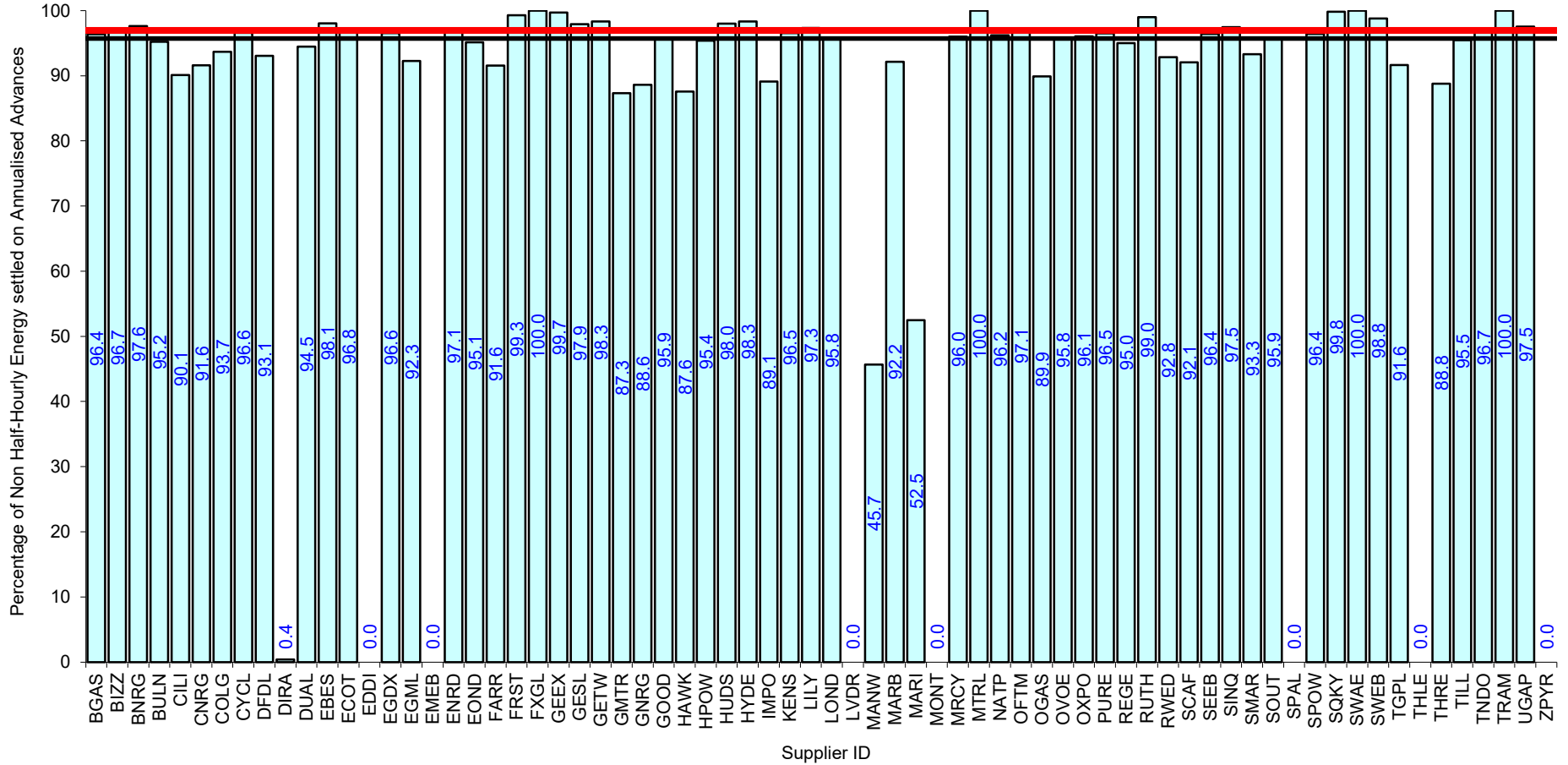


Serial SP08a. GSP Group: North Western (_G). Reporting Period 1 to 31 May 2024 . Reconciliation Run: RF



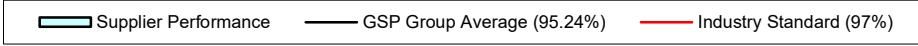
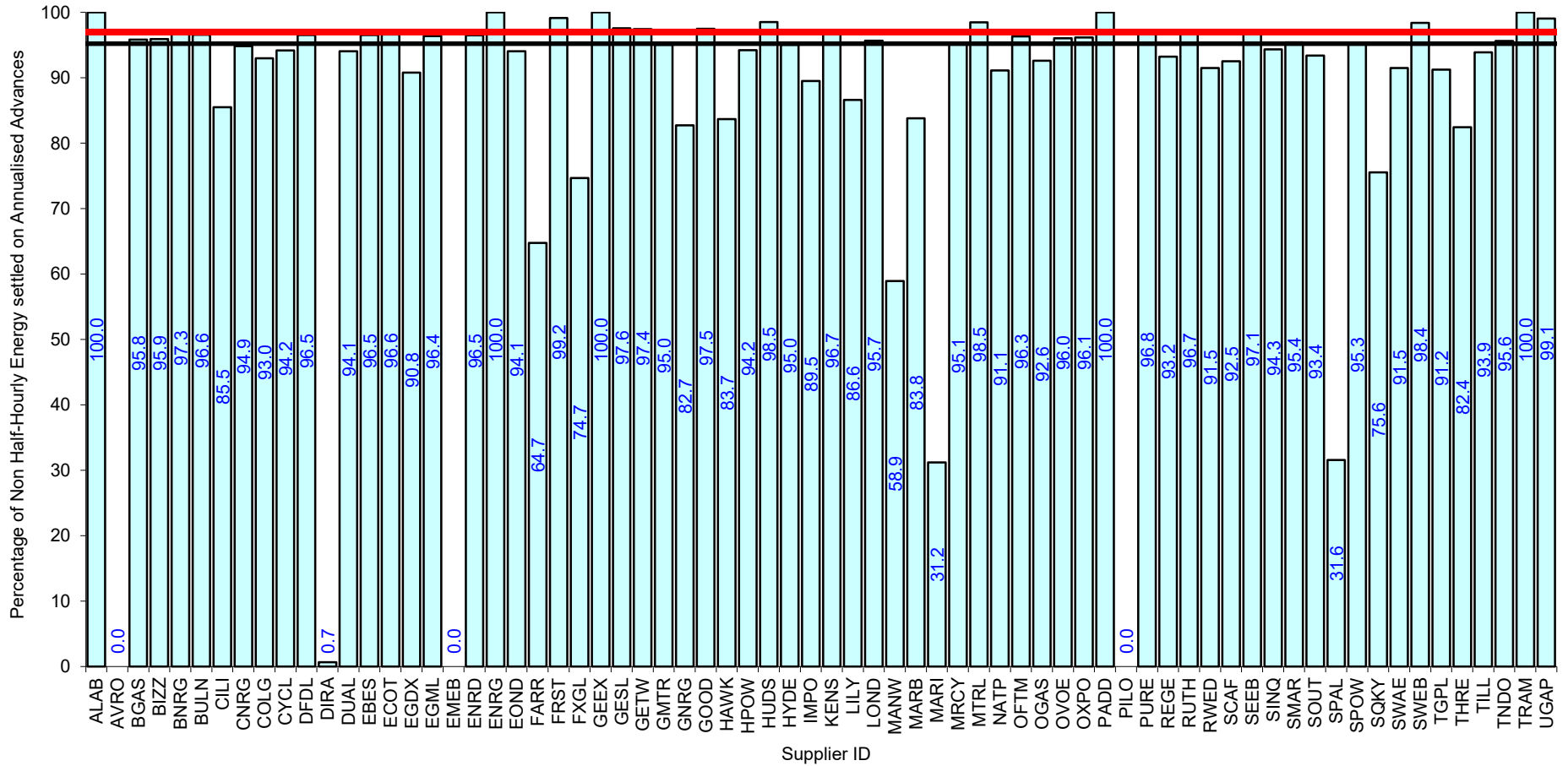
█ Supplier Performance
 — GSP Group Average (95.6%)
 — Industry Standard (97%)

Serial SP08a. GSP Group: Southern (_H). Reporting Period 1 to 31 May 2024 . Reconciliation Run: RF

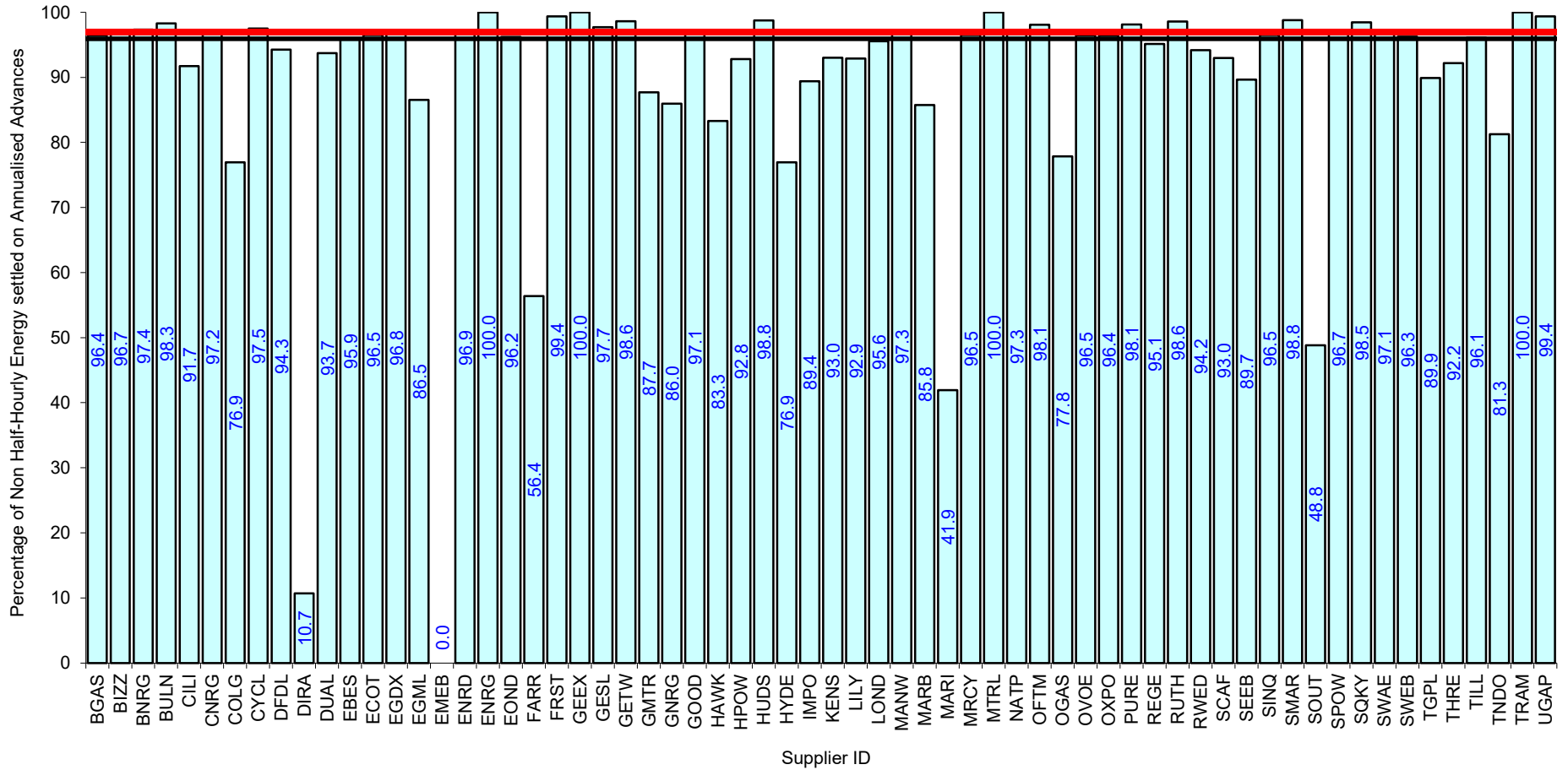


Supplier Performance
 GSP Group Average (95.72%)
 Industry Standard (97%)

Serial SP08a. GSP Group: South Eastern (_J). Reporting Period 1 to 31 May 2024 . Reconciliation Run: RF

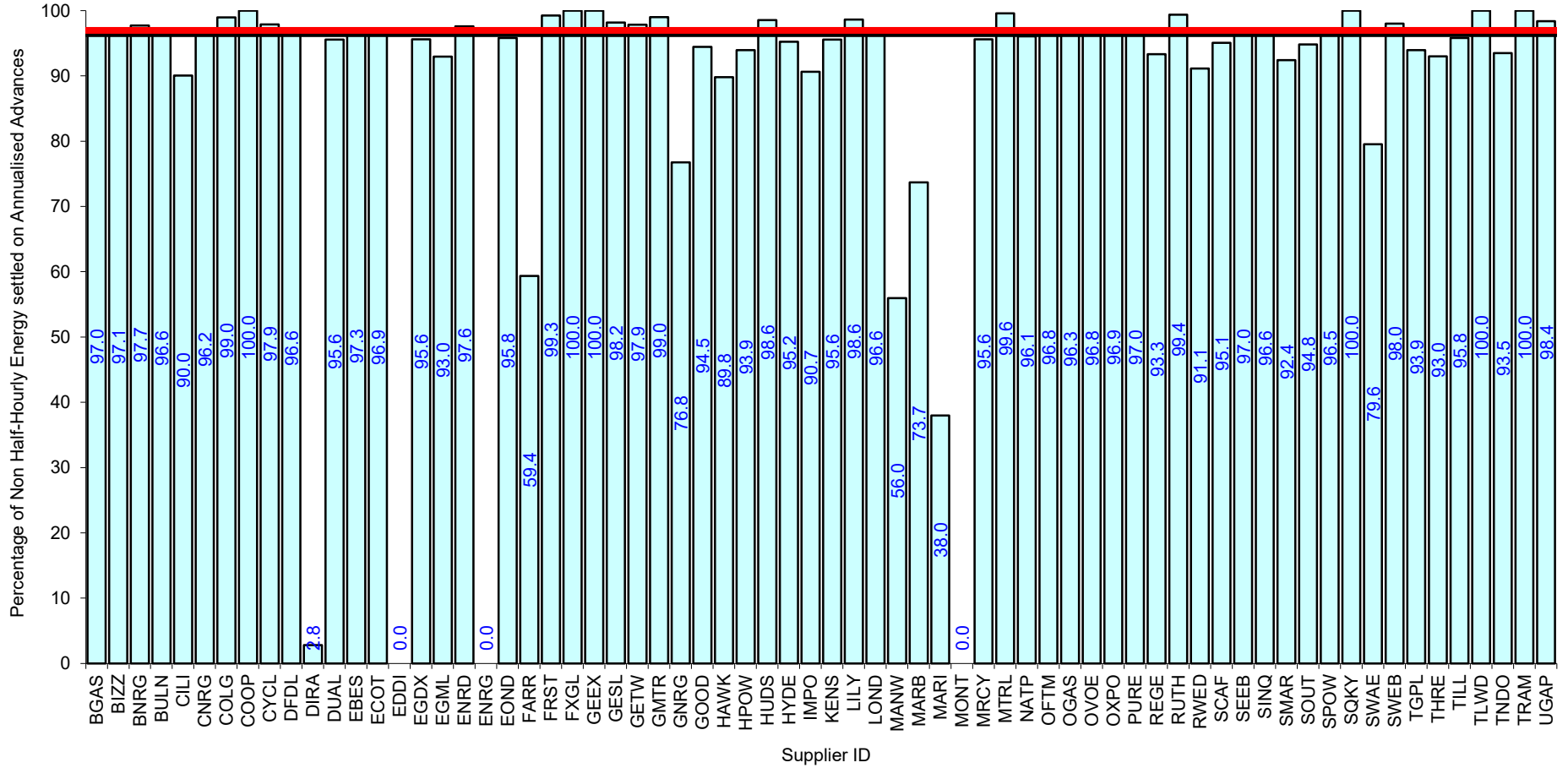


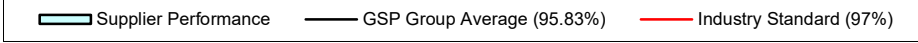
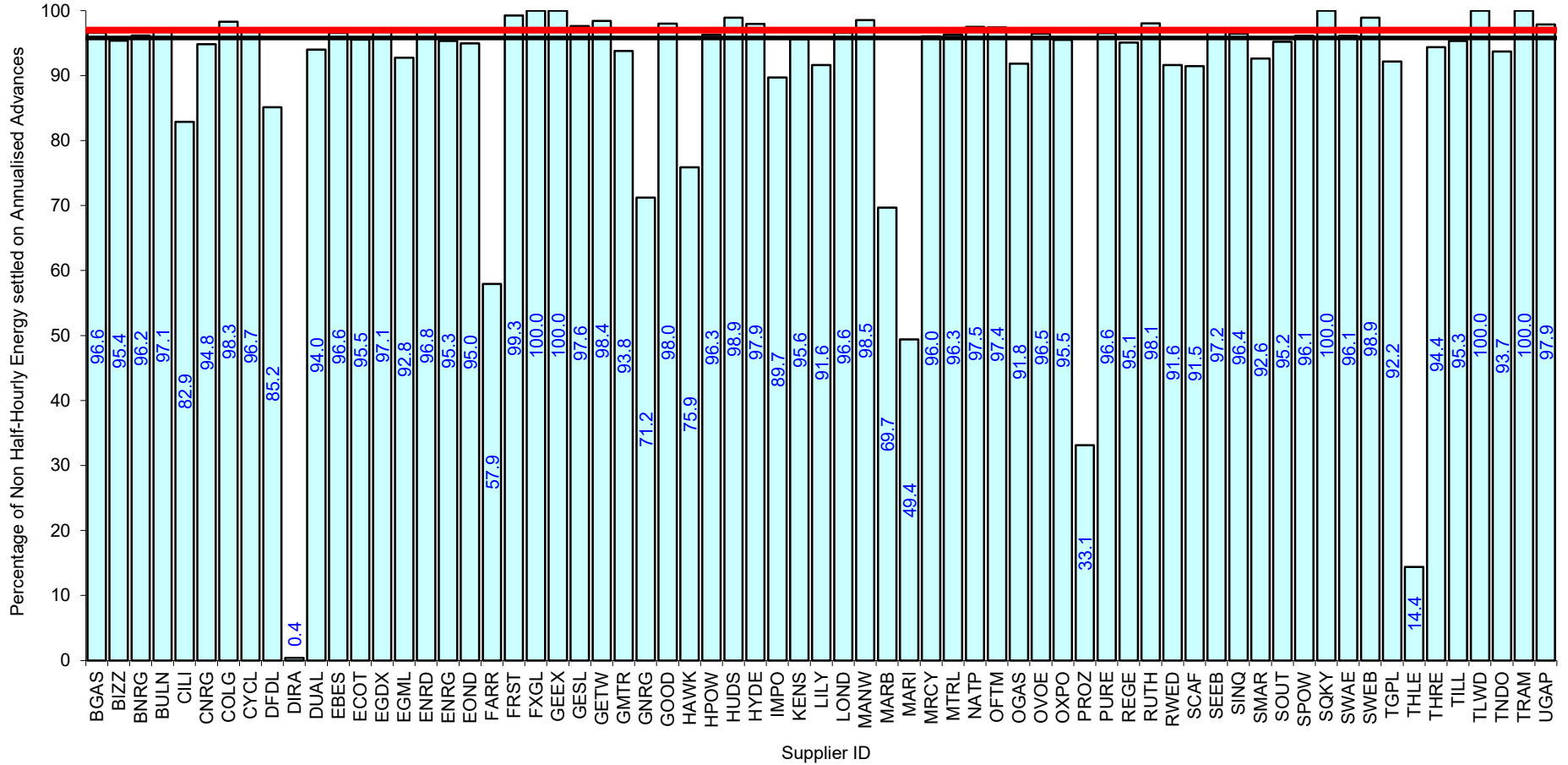
Serial SP08a. GSP Group: South Wales (_K). Reporting Period 1 to 31 May 2024 . Reconciliation Run: RF



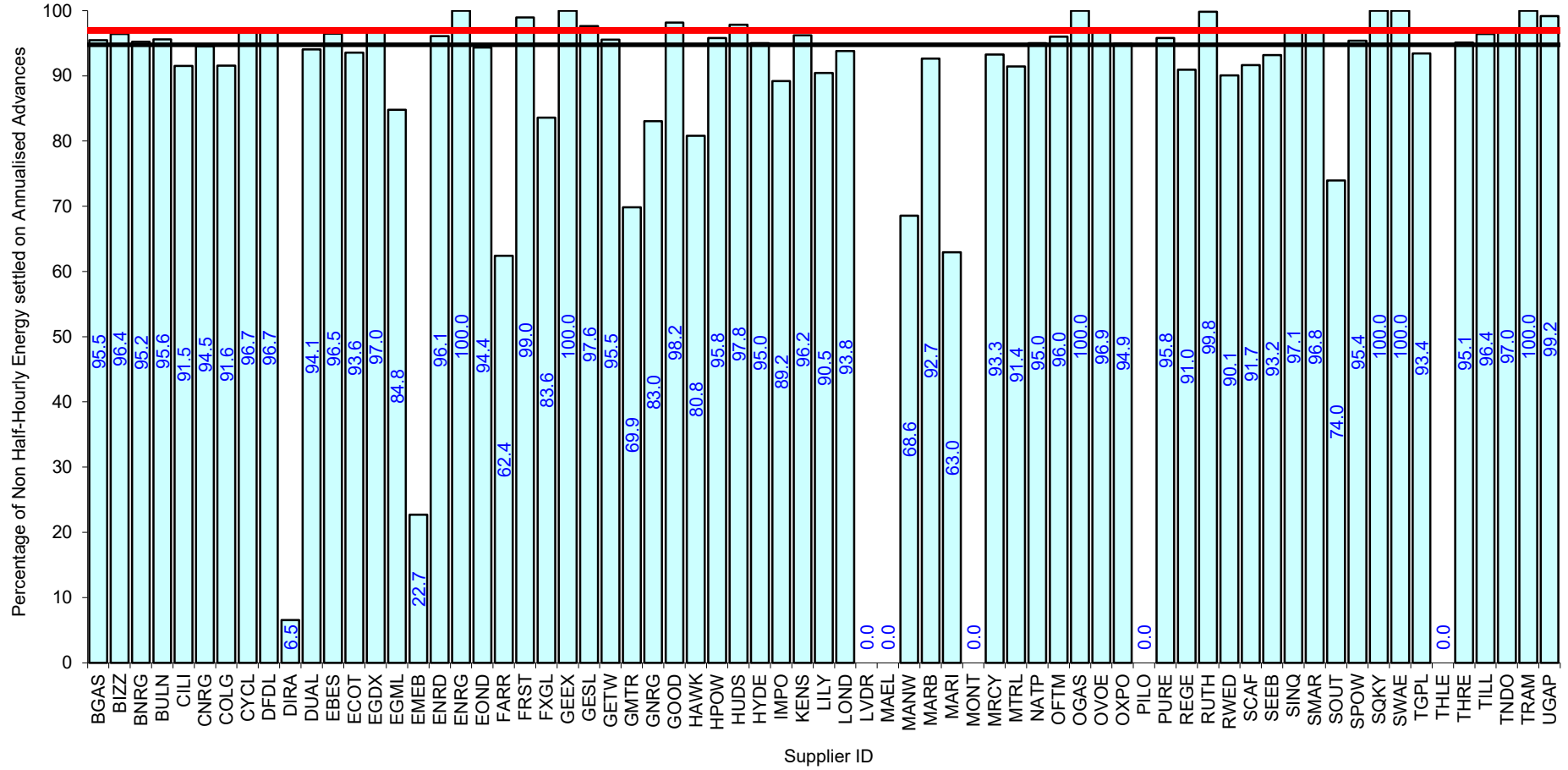
Supplier Performance
 GSP Group Average (95.94%)
 Industry Standard (97%)

Serial SP08a. GSP Group: South Western (_L). Reporting Period 1 to 31 May 2024 . Reconciliation Run: RF





Serial SP08a. GSP Group: South Scotland (_N). Reporting Period 1 to 31 May 2024 . Reconciliation Run: RF



Supplier Performance
 GSP Group Average (94.77%)
 Industry Standard (97%)

