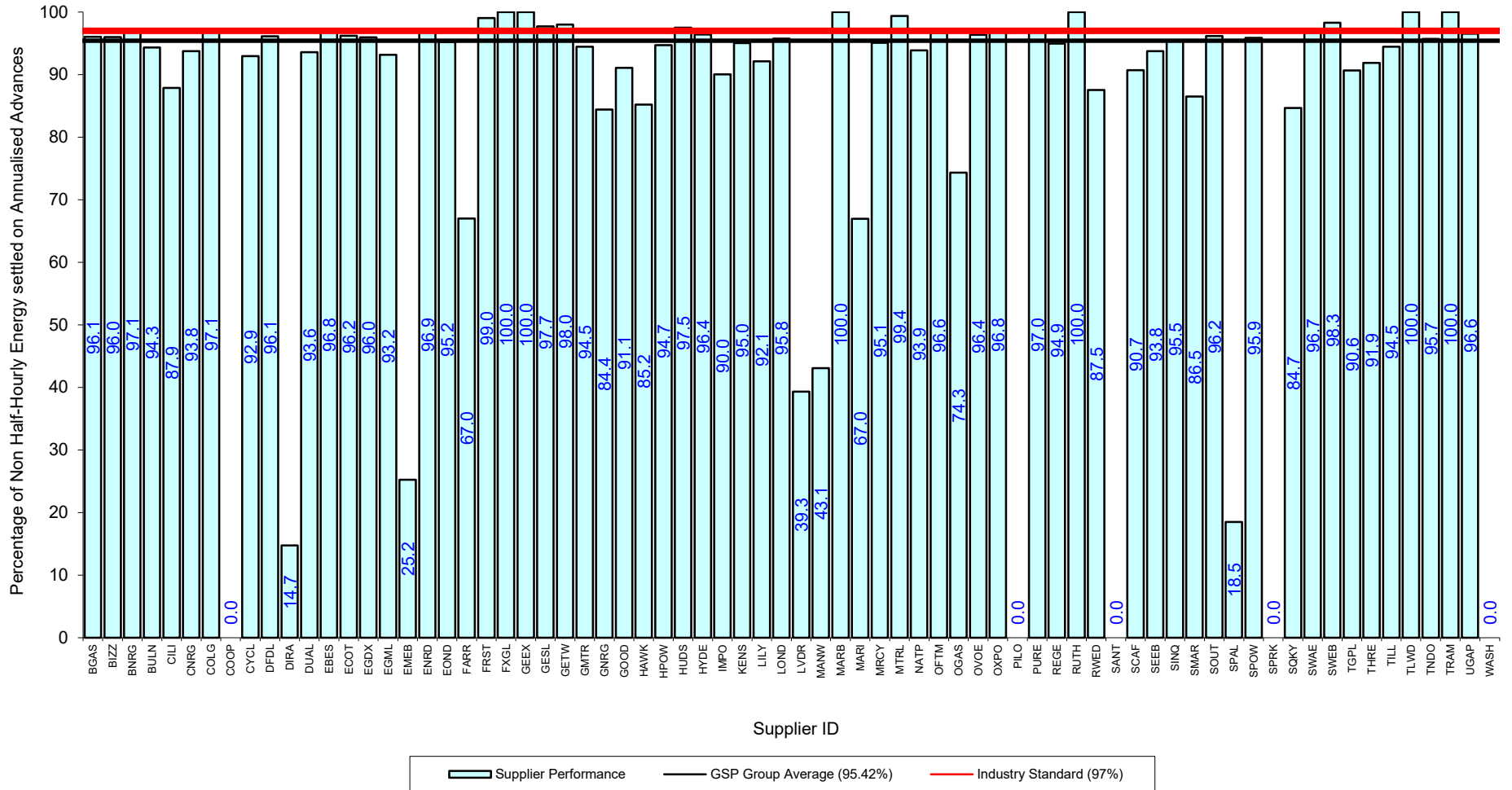
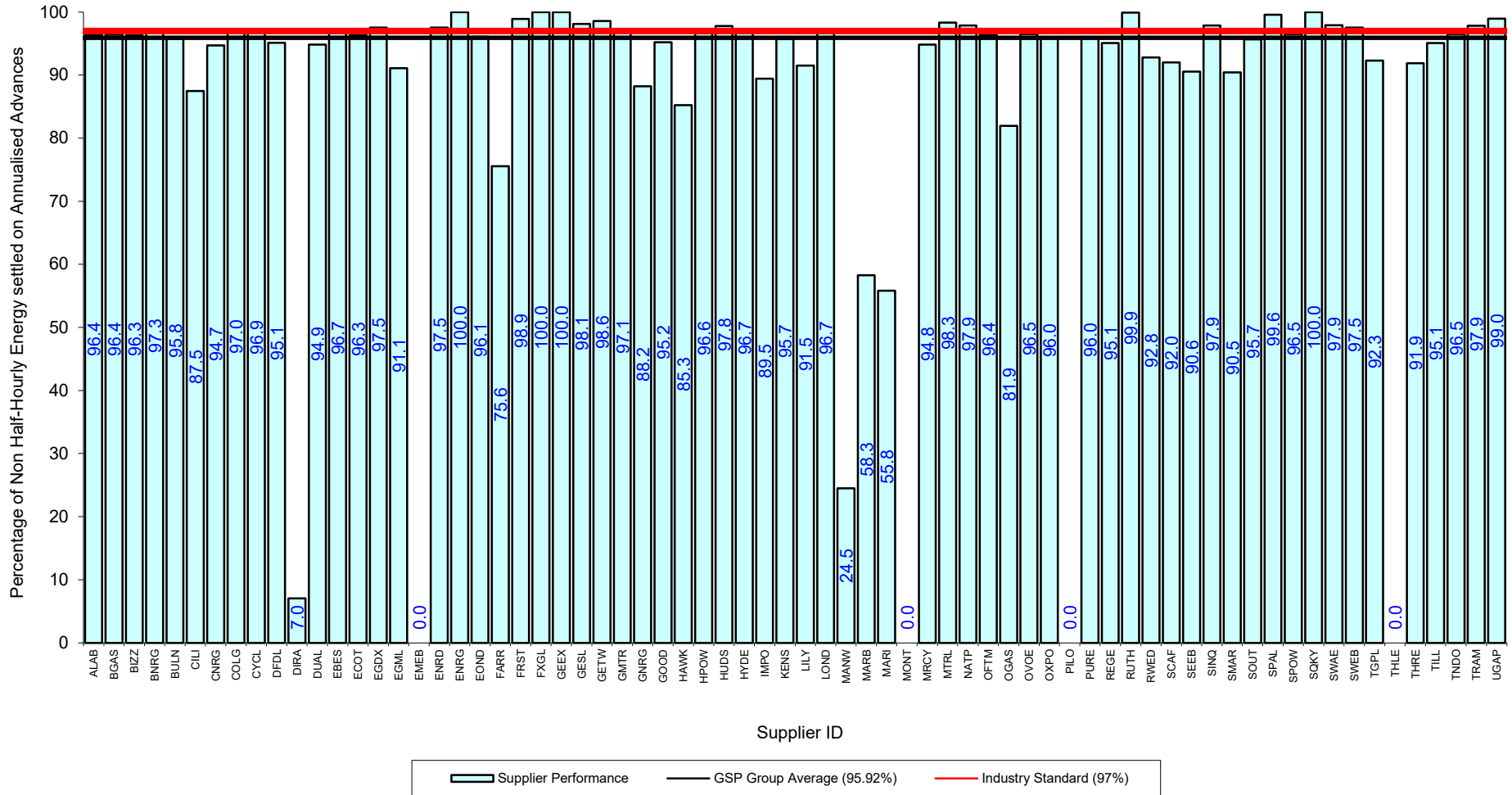
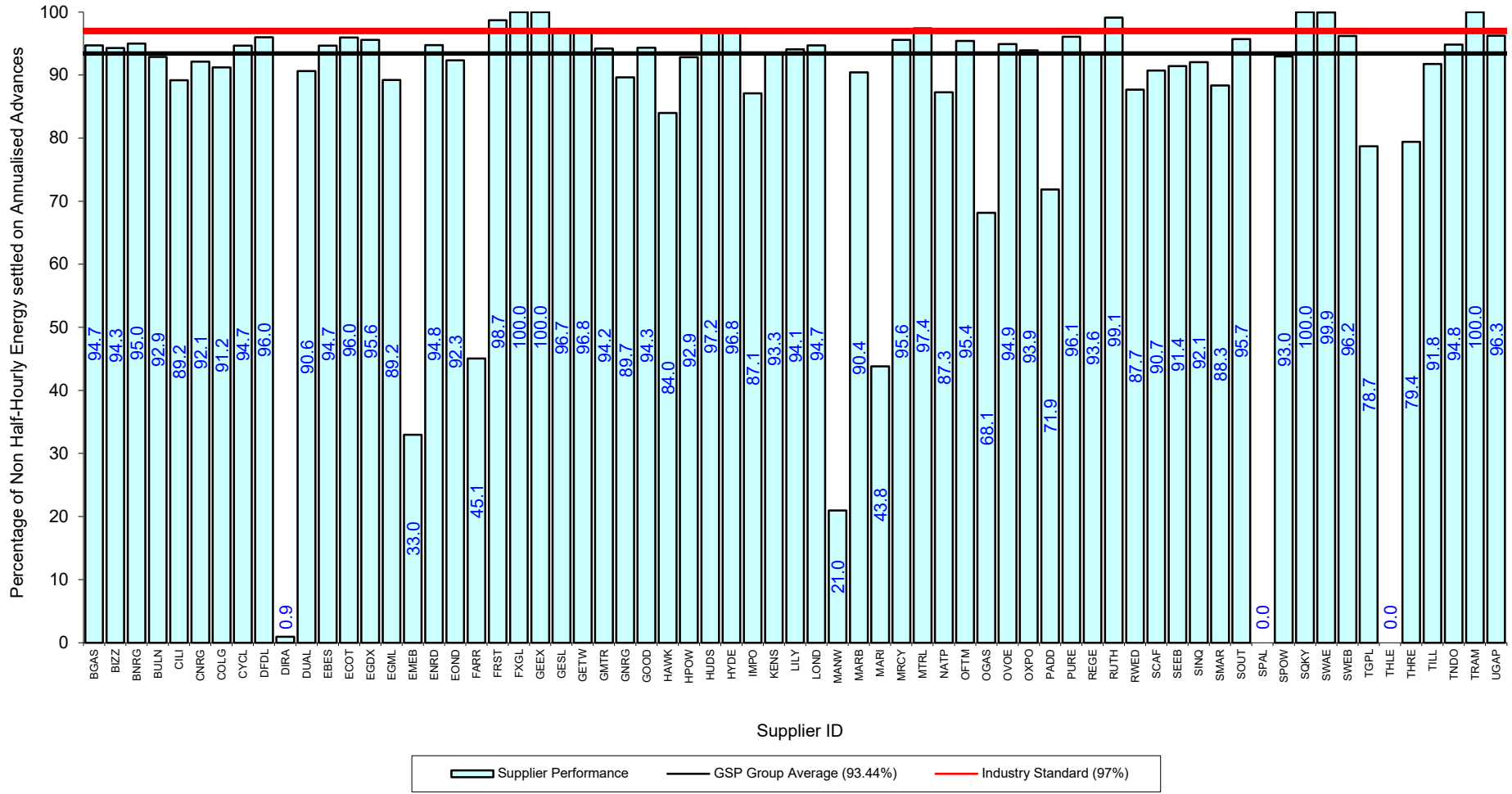
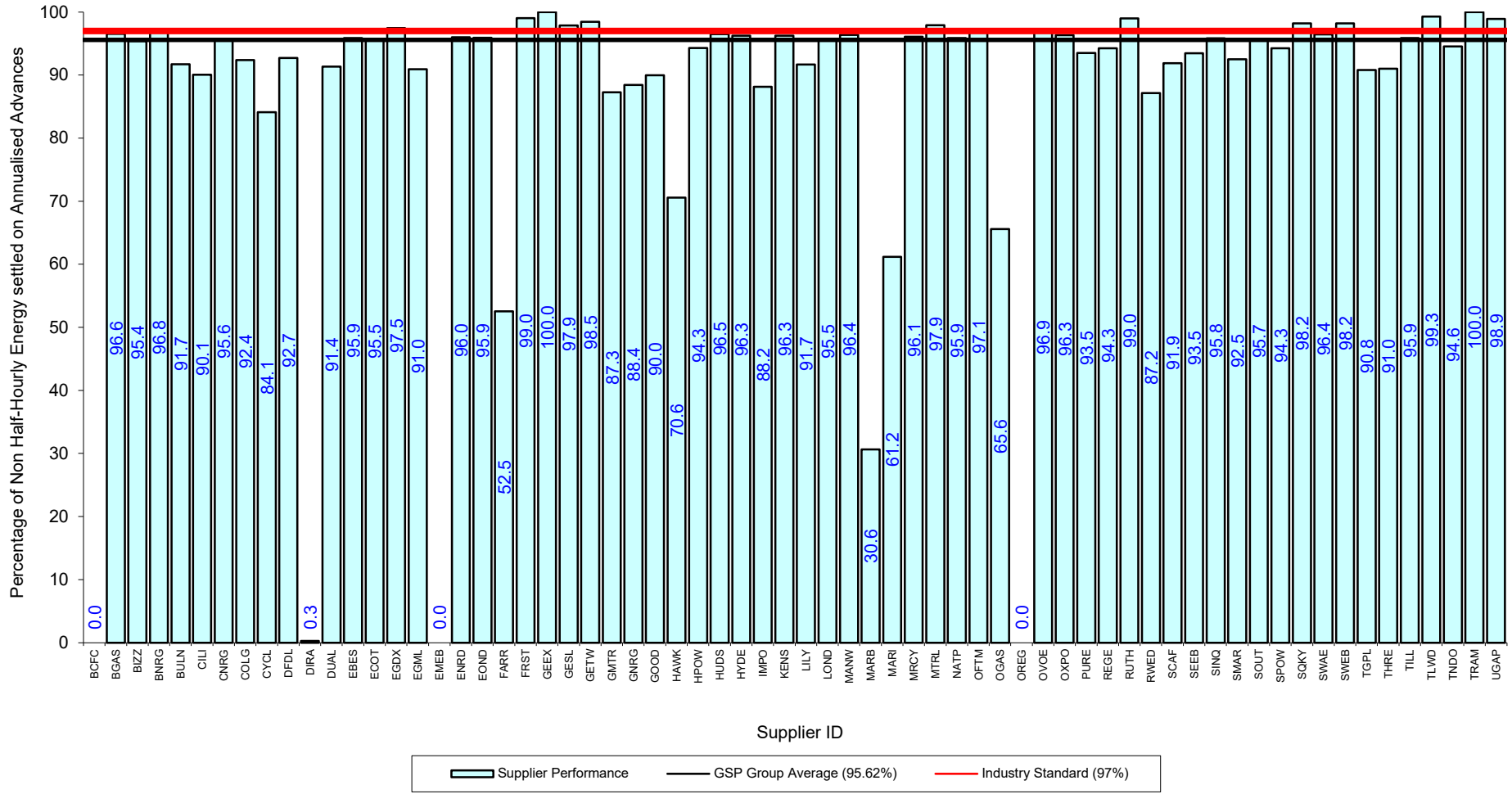


Serial SP08a. GSP Group: Eastern (_A). Reporting Period 1 to 30 April 2024 . Reconciliation Run: RF

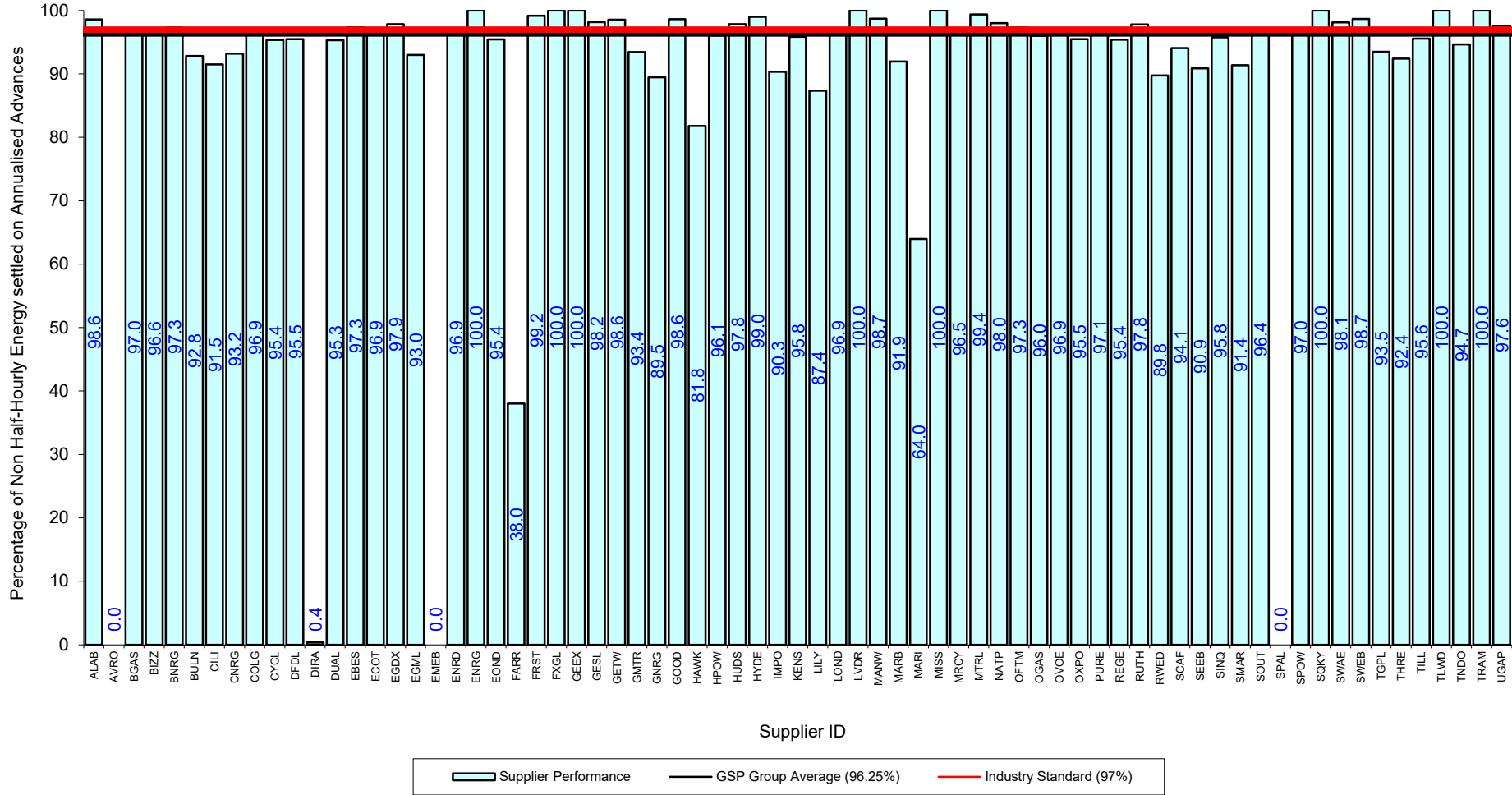


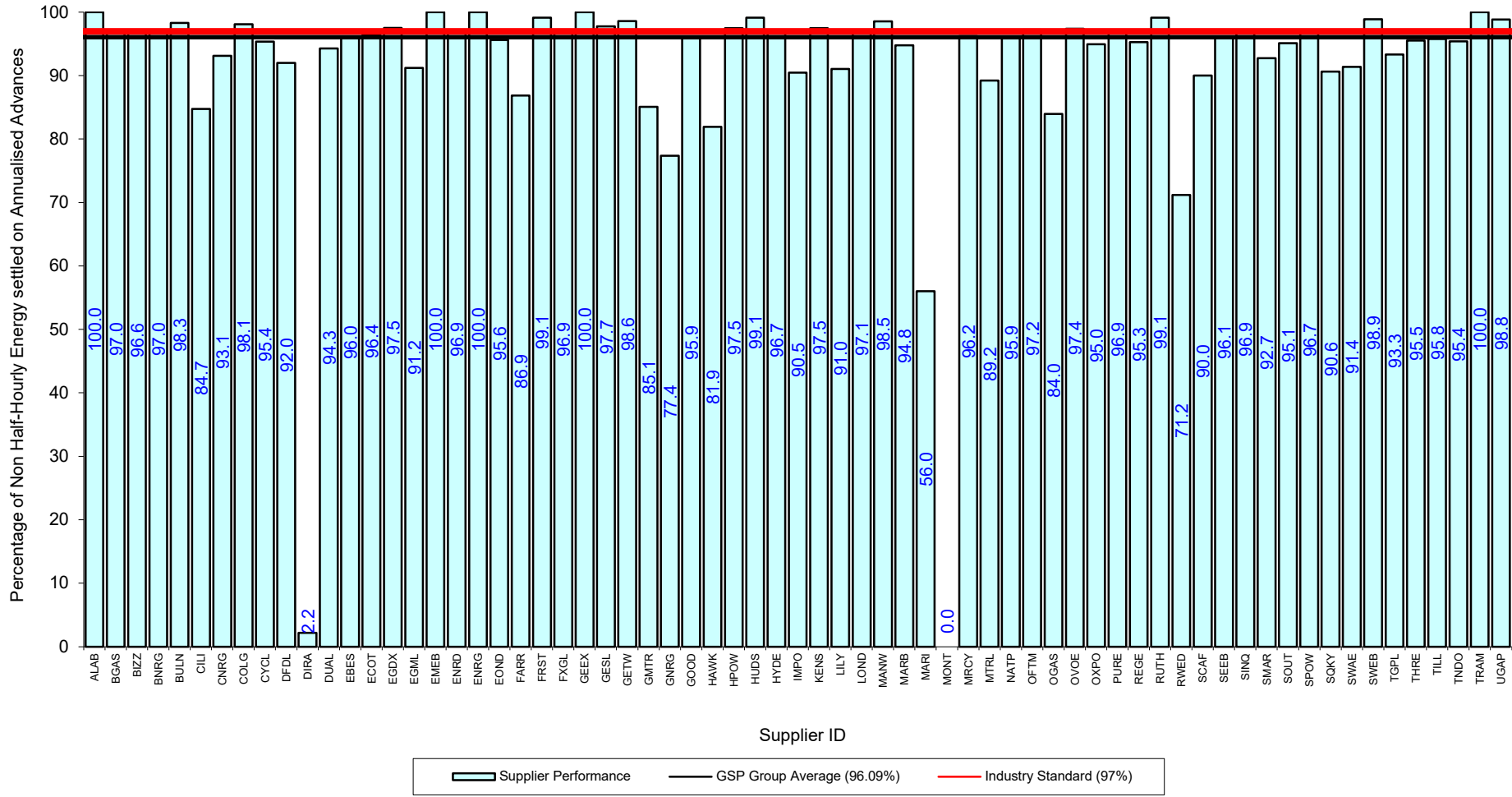




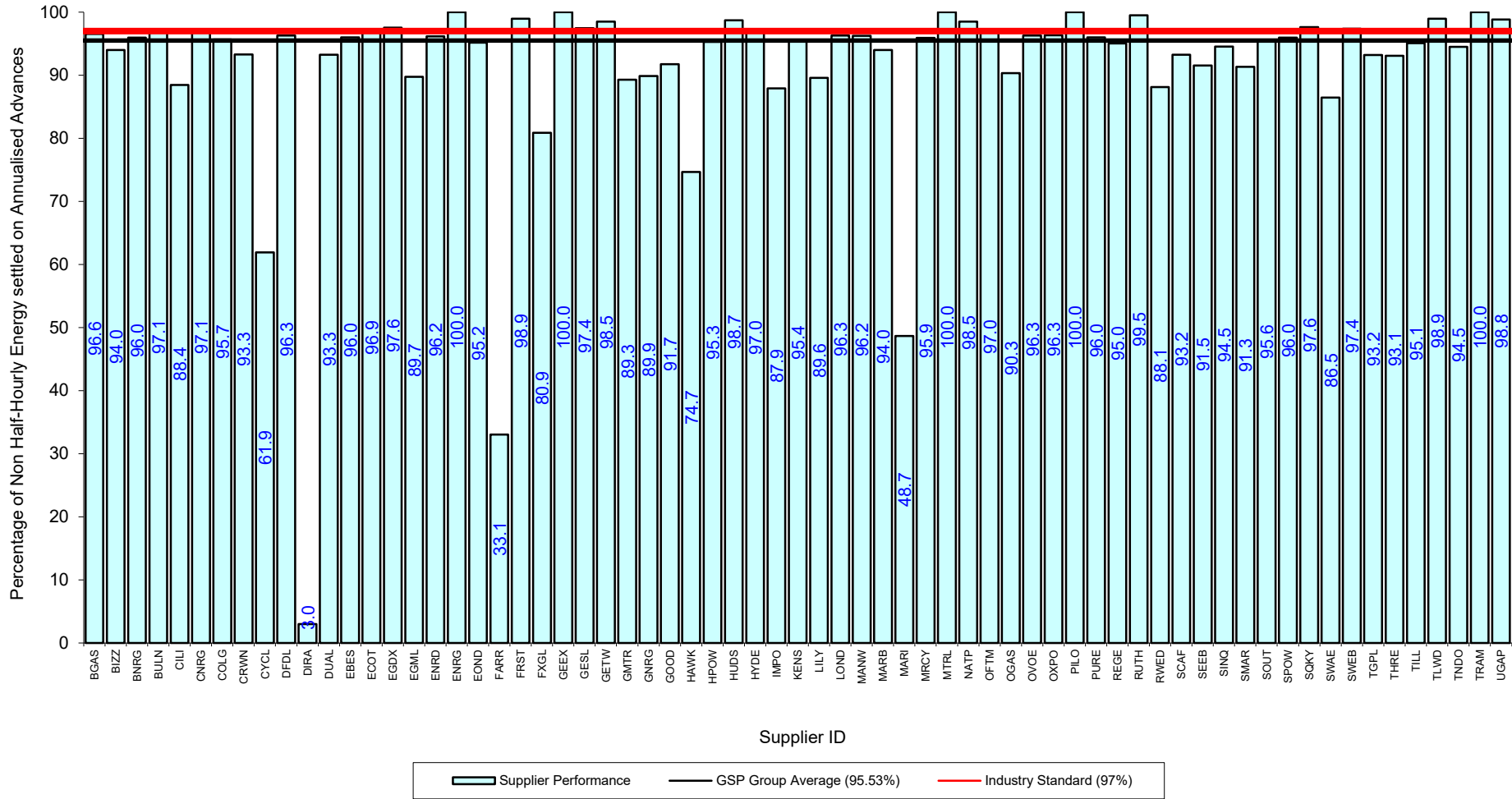


Serial SP08a. GSP Group: Midlands (_E). Reporting Period 1 to 30 April 2024 . Reconciliation Run: RF

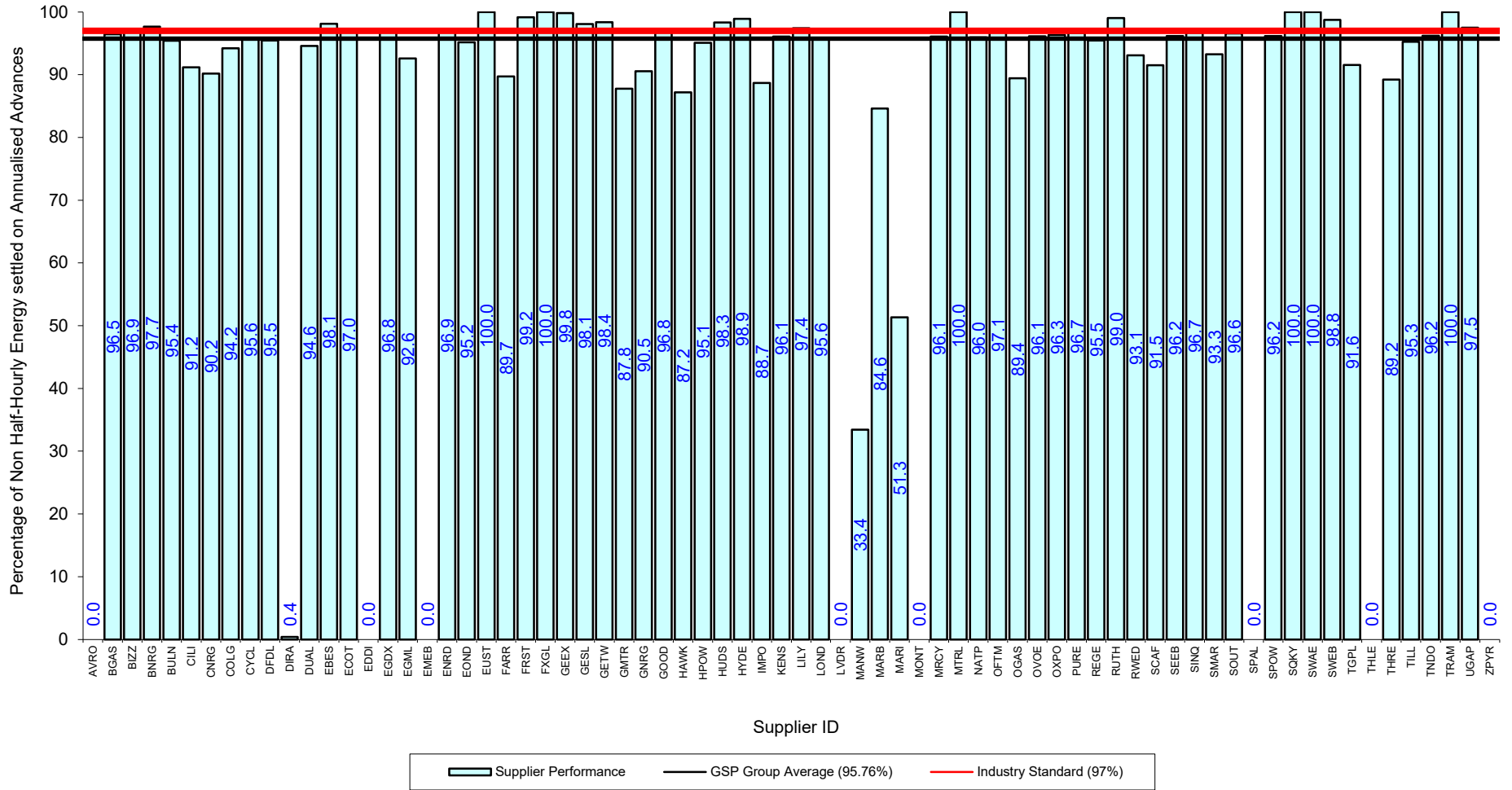




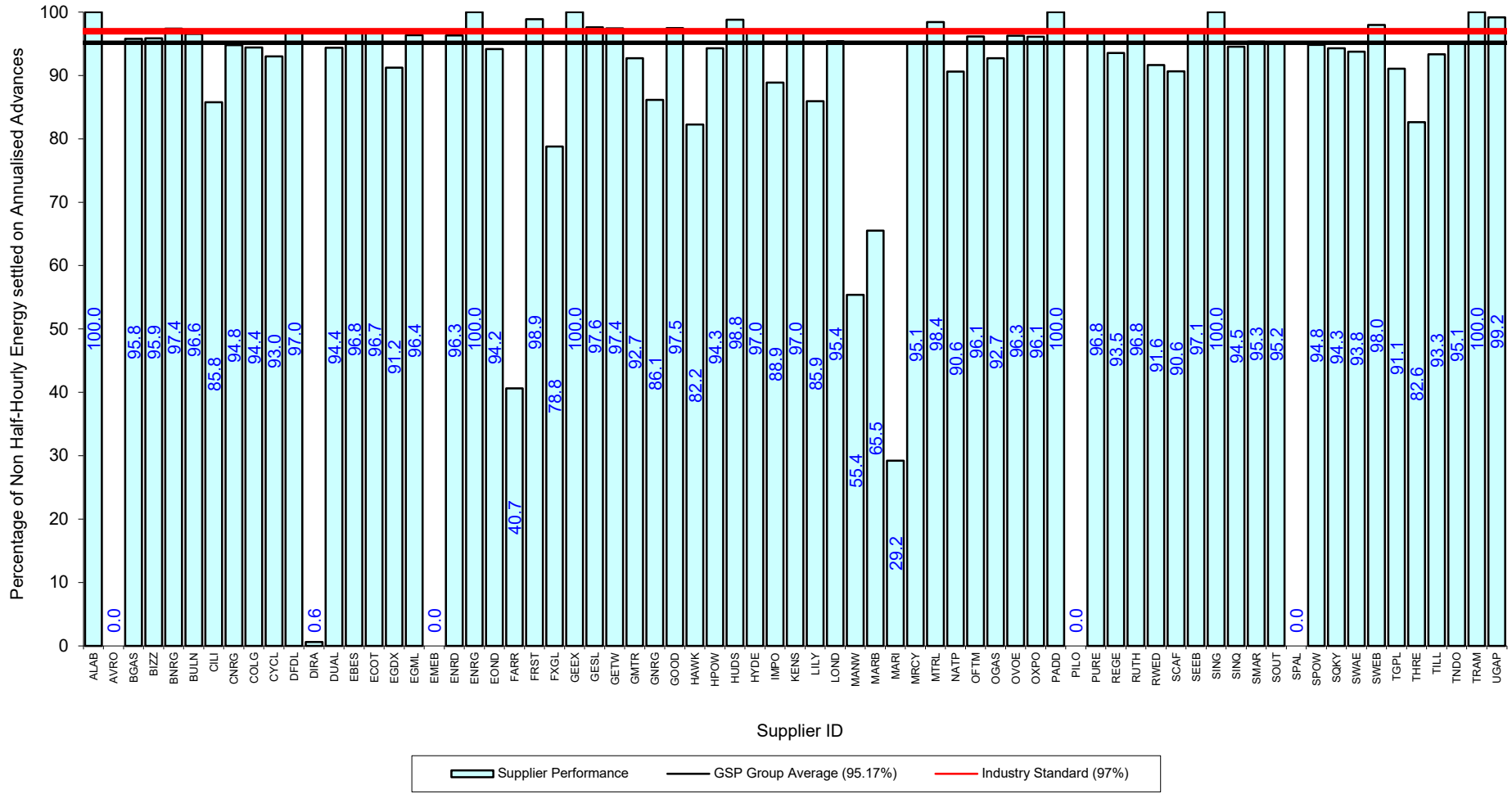
Serial SP08a. GSP Group: North Western (_G). Reporting Period 1 to 30 April 2024 . Reconciliation Run: RF



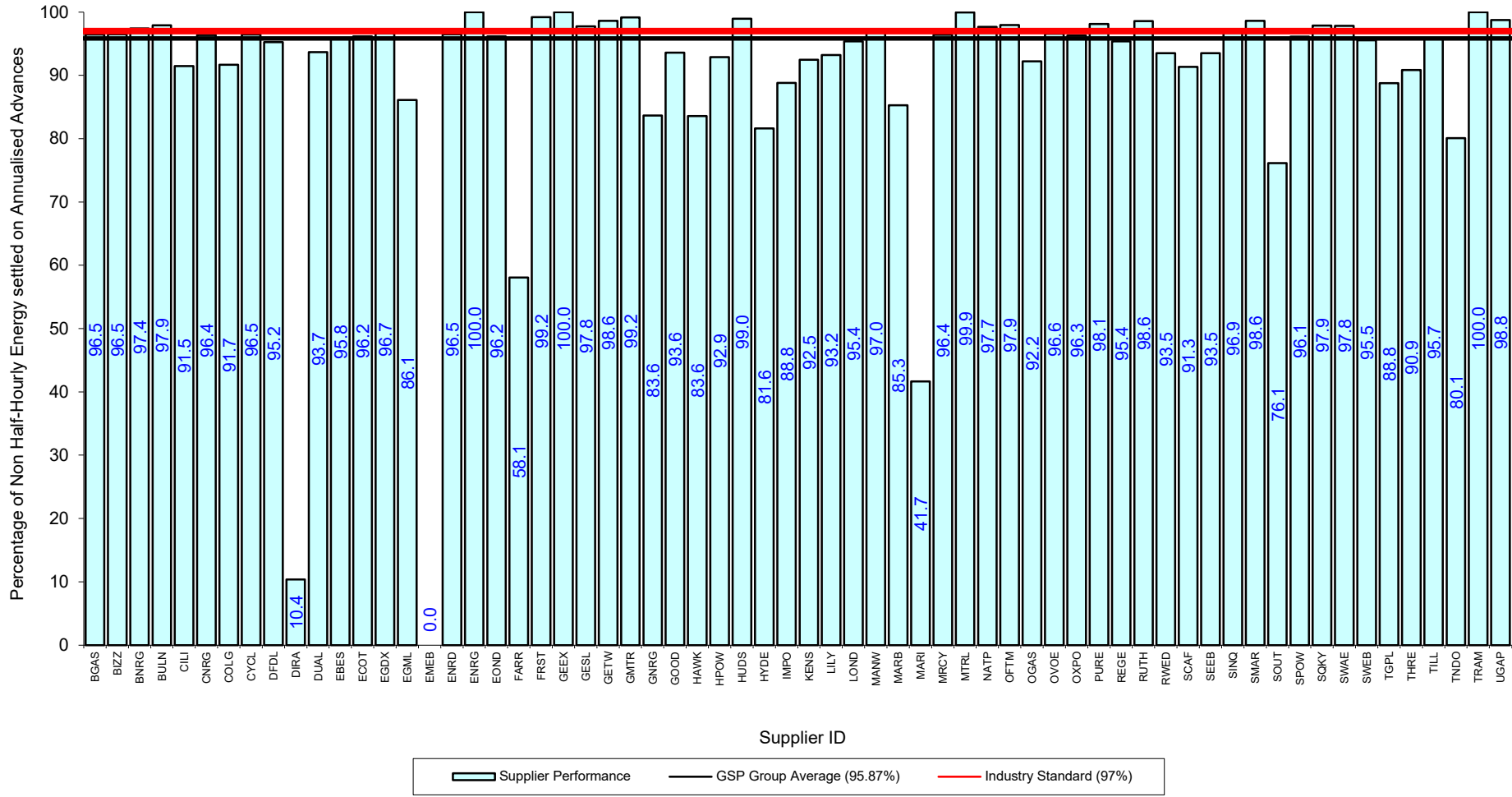
Serial SP08a. GSP Group: Southern (_H). Reporting Period 1 to 30 April 2024 . Reconciliation Run: RF



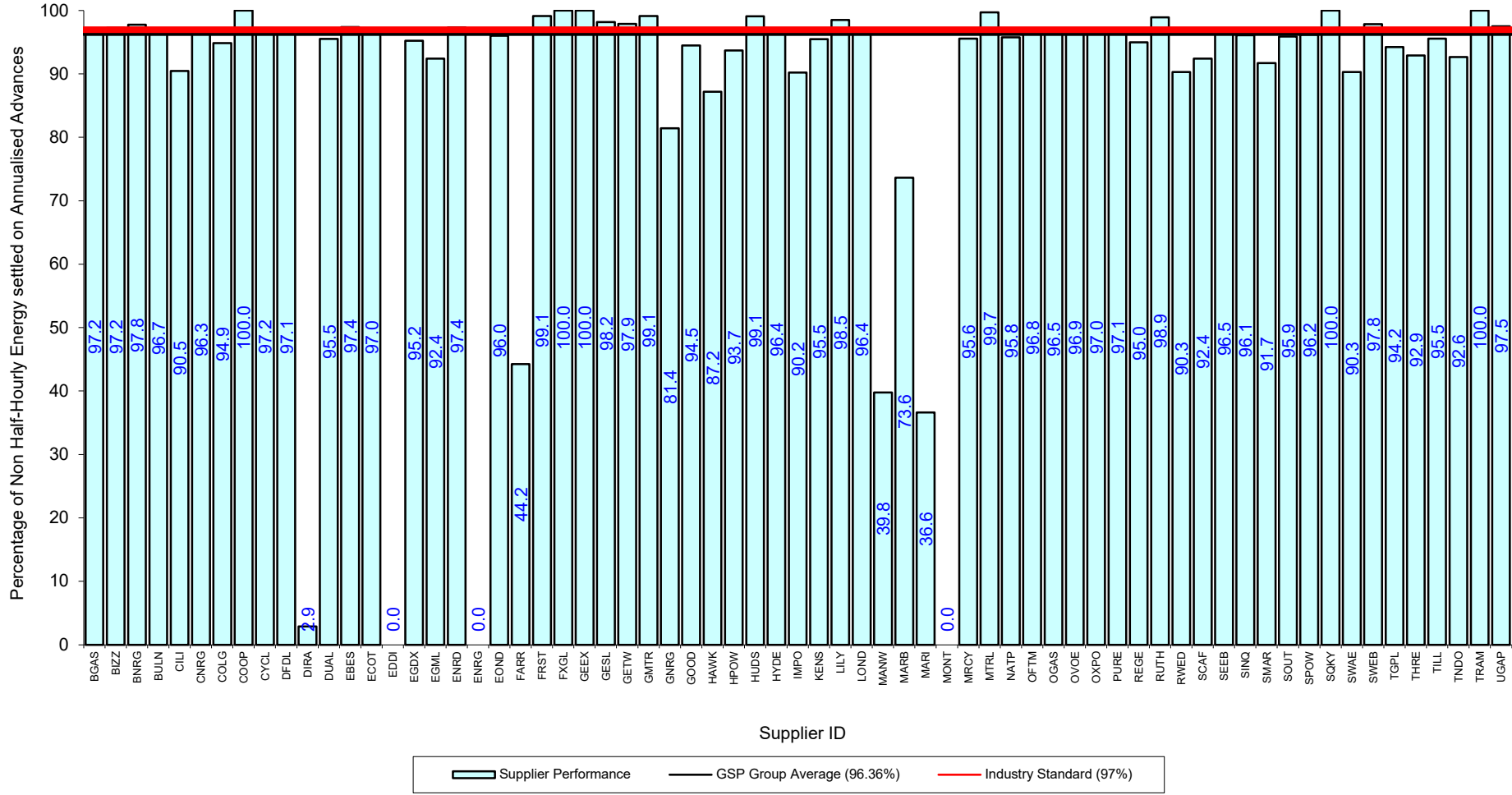
Serial SP08a. GSP Group: South Eastern (_J). Reporting Period 1 to 30 April 2024 . Reconciliation Run: RF

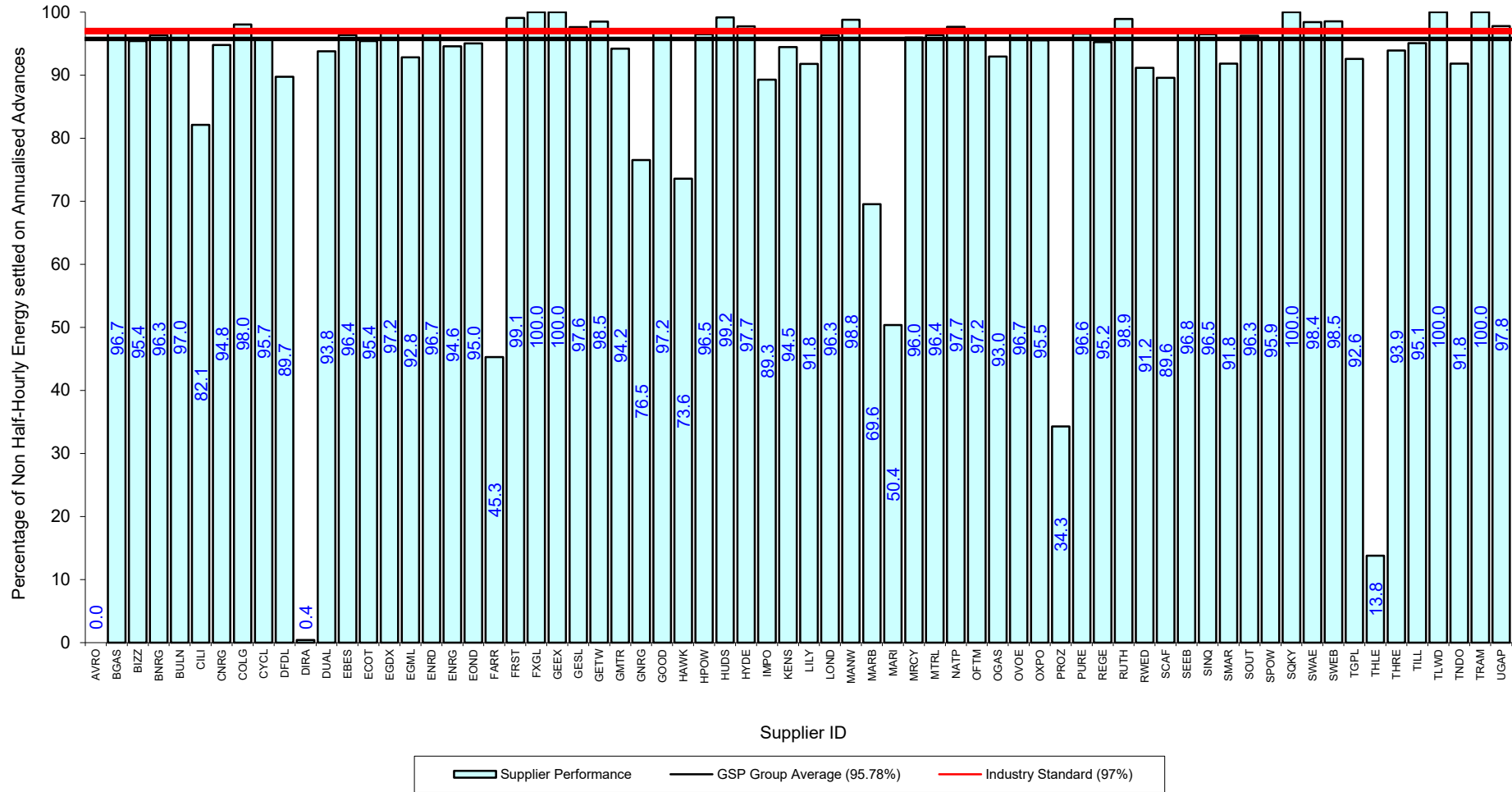


Internal



Serial SP08a. GSP Group: South Western (_L). Reporting Period 1 to 30 April 2024 . Reconciliation Run: RF





Serial SP08a. GSP Group: South Scotland (_N). Reporting Period 1 to 30 April 2024 . Reconciliation Run: RF

