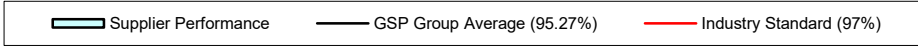
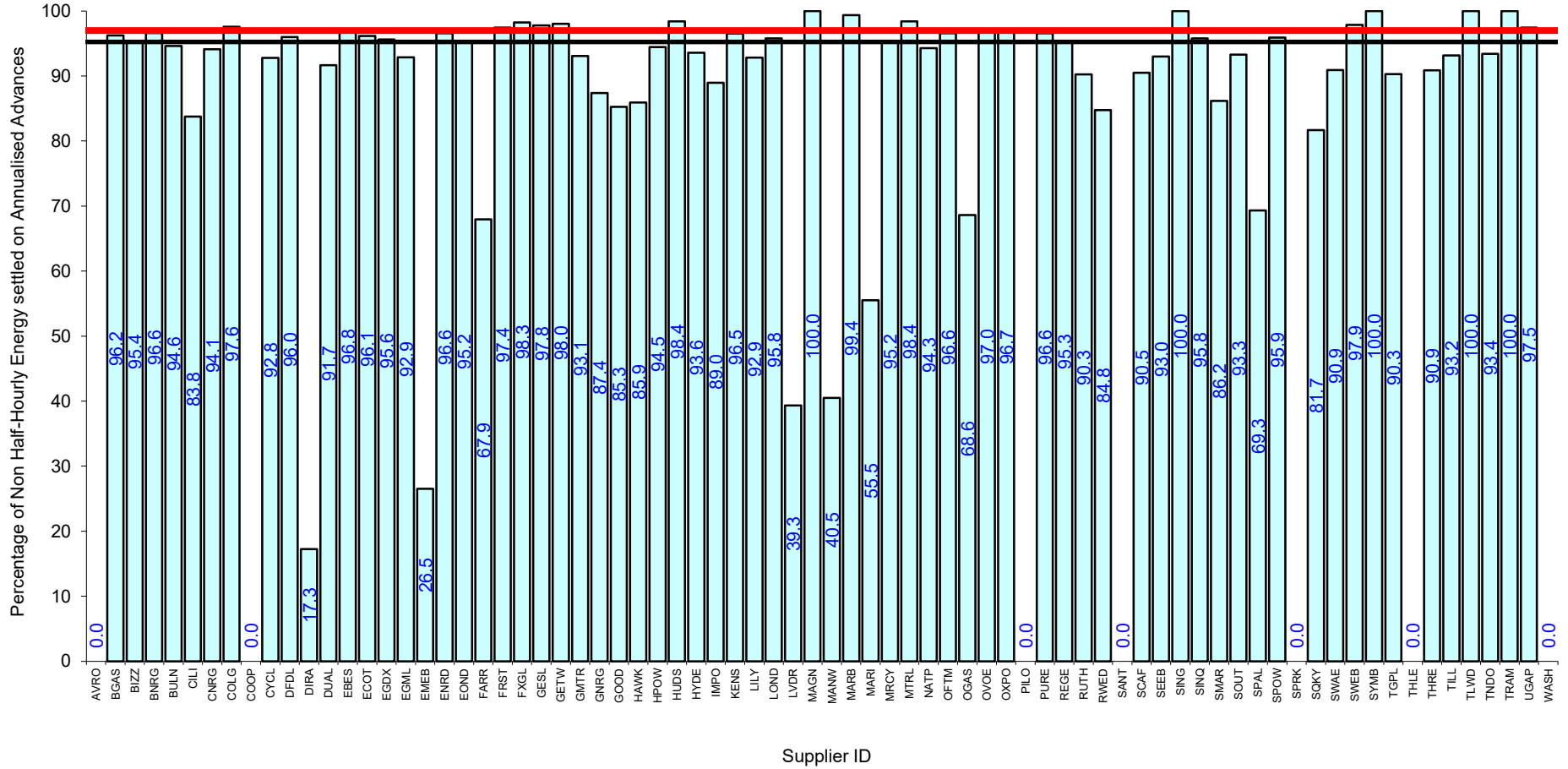
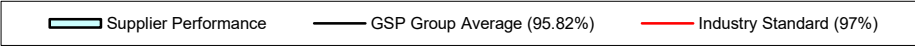
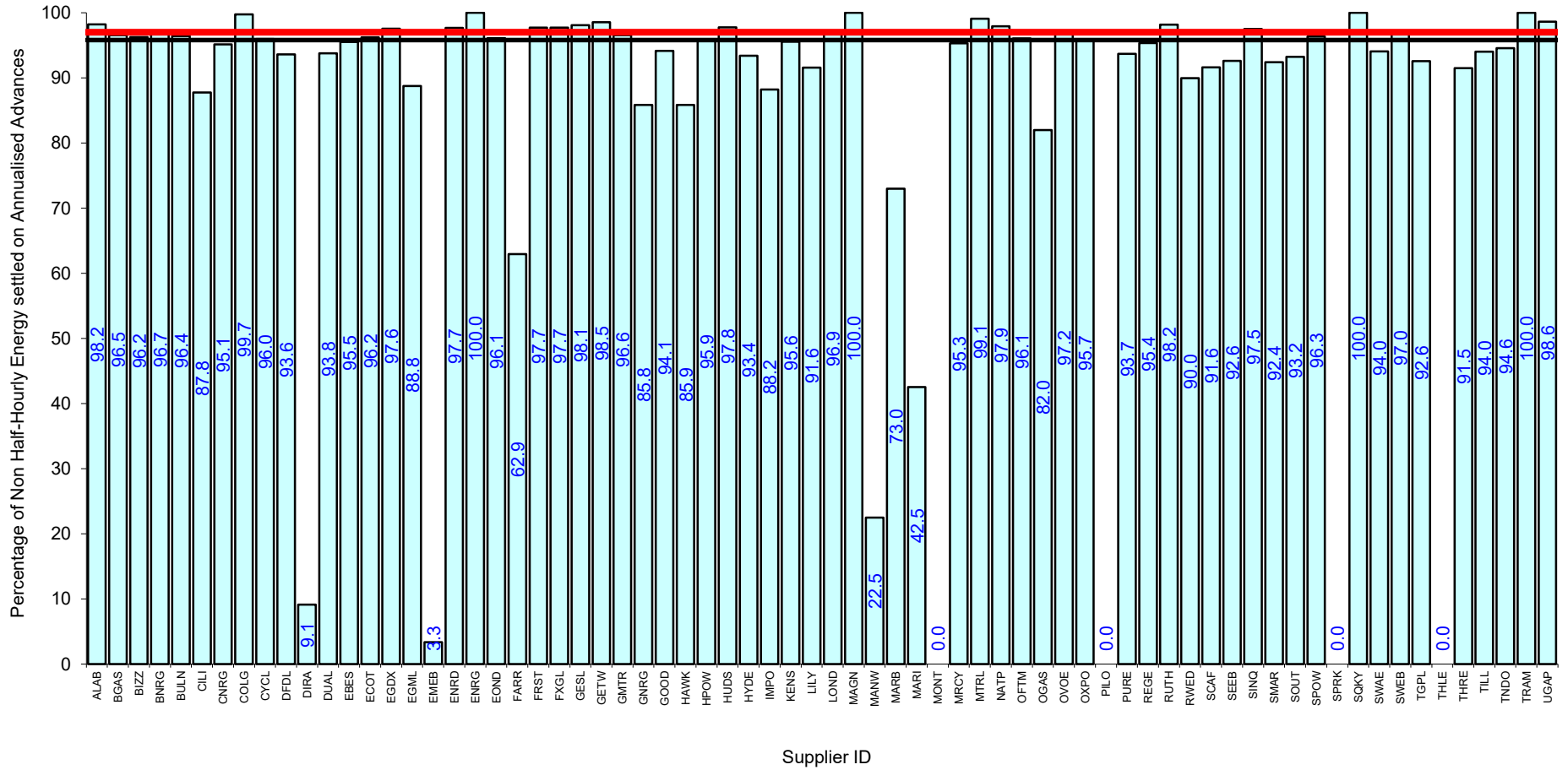


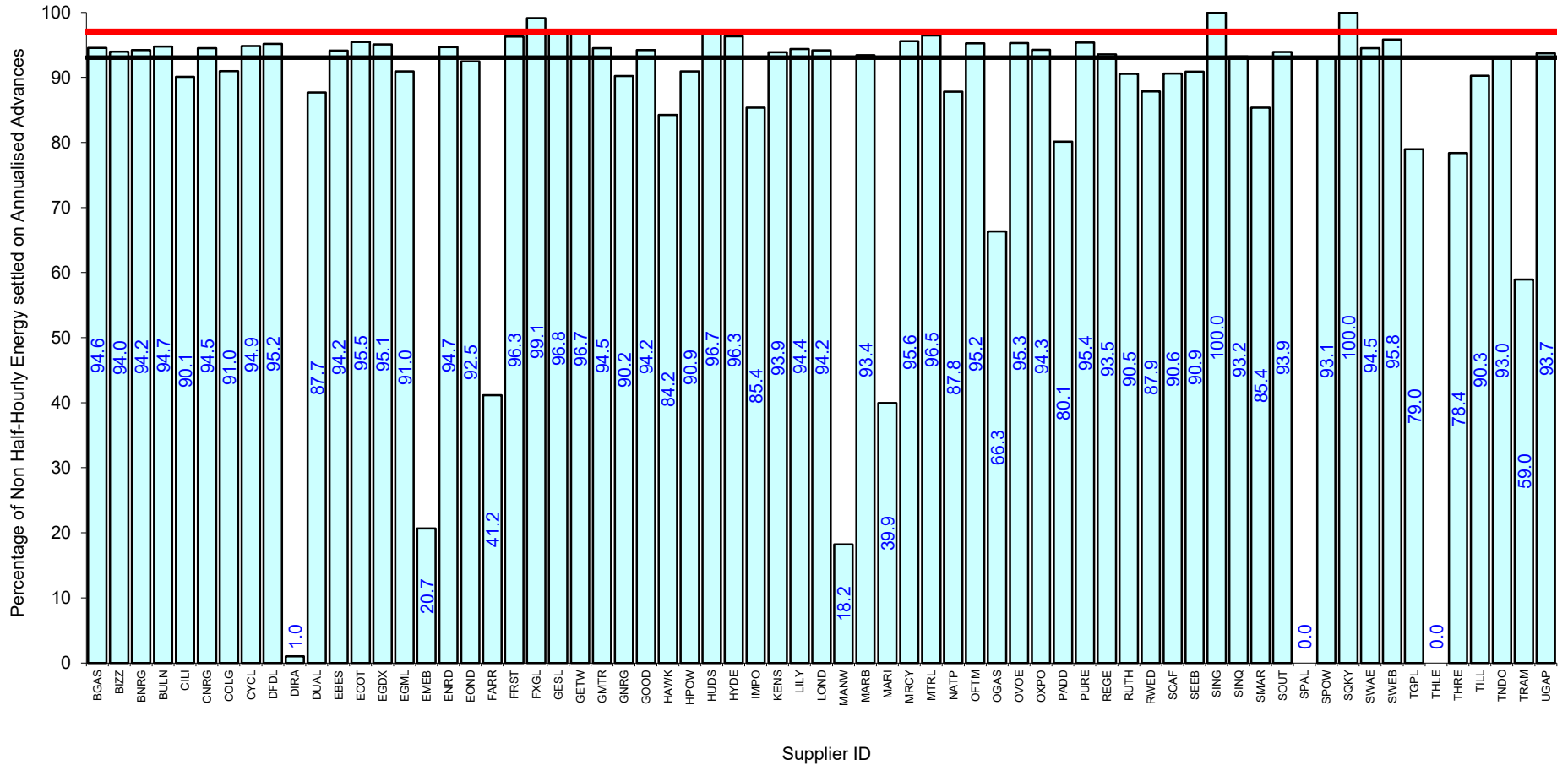
Serial SP08a. GSP Group: Eastern (\_A). Reporting Period 1 to 31 January 2024 . Reconciliation Run: RF

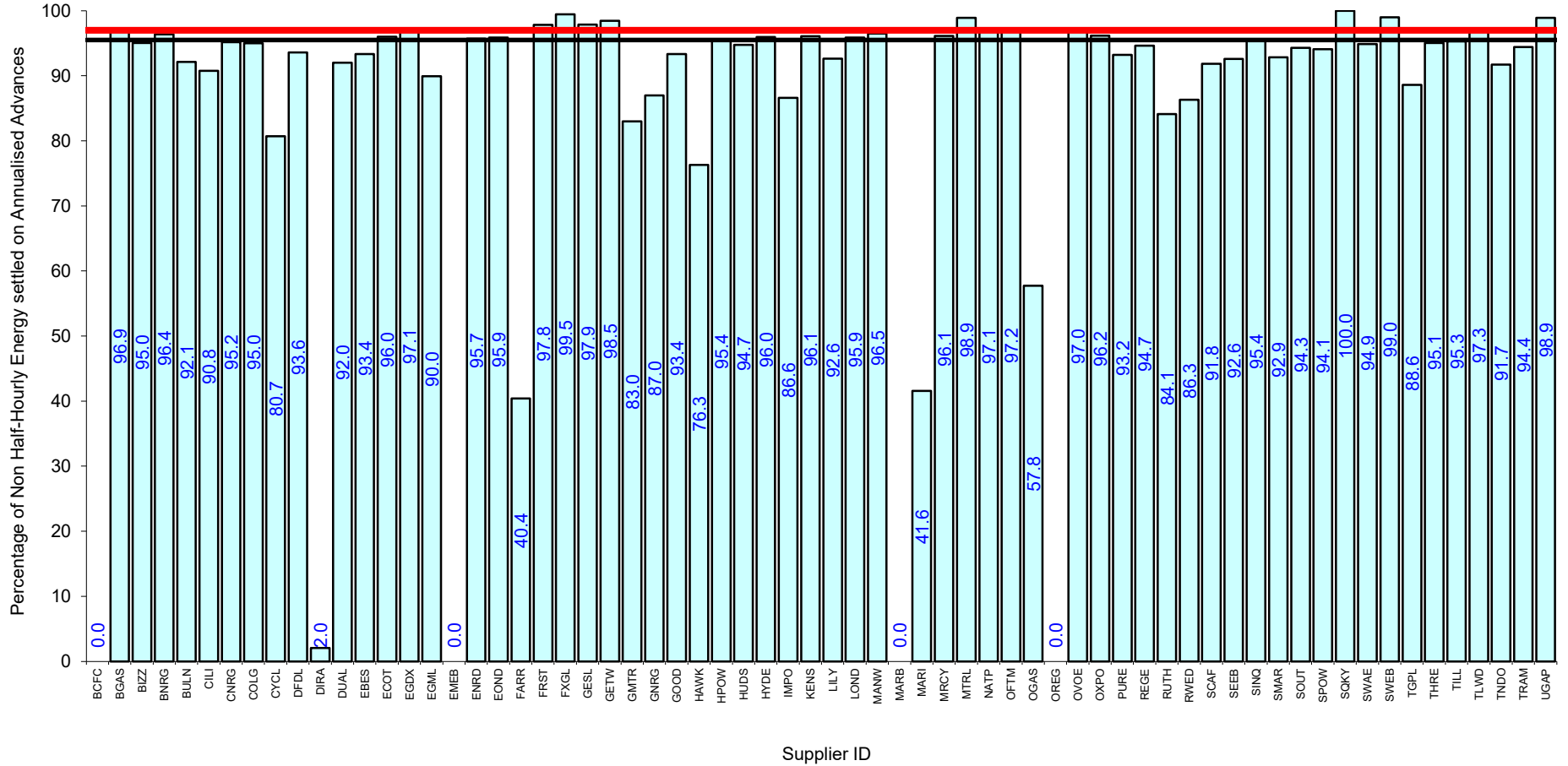


Serial SP08a. GSP Group: East Midlands (\_B). Reporting Period 1 to 31 January 2024 . Reconciliation Run: RF

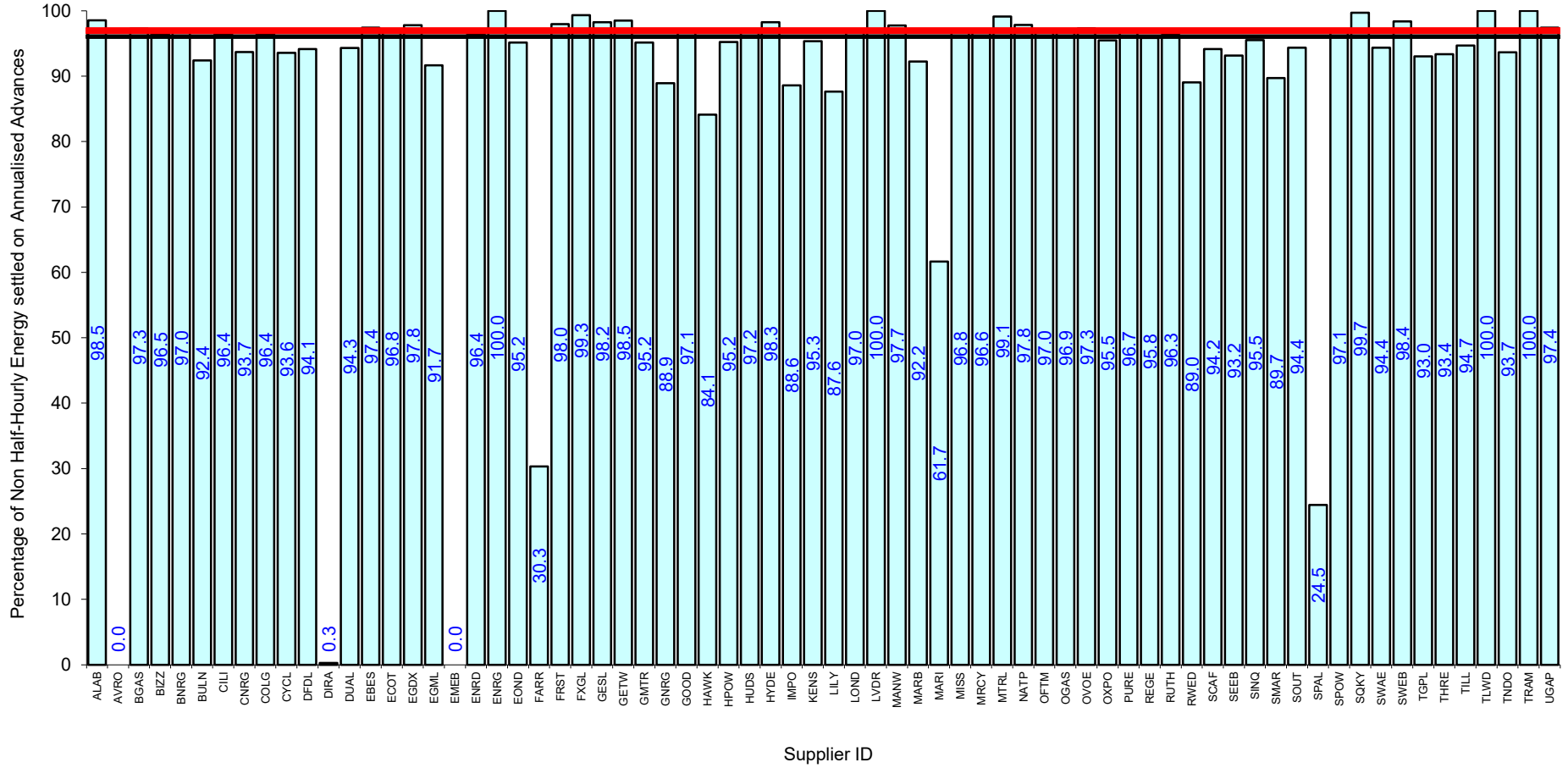


Serial SP08a. GSP Group: London (\_C). Reporting Period 1 to 31 January 2024 . Reconciliation Run: RF



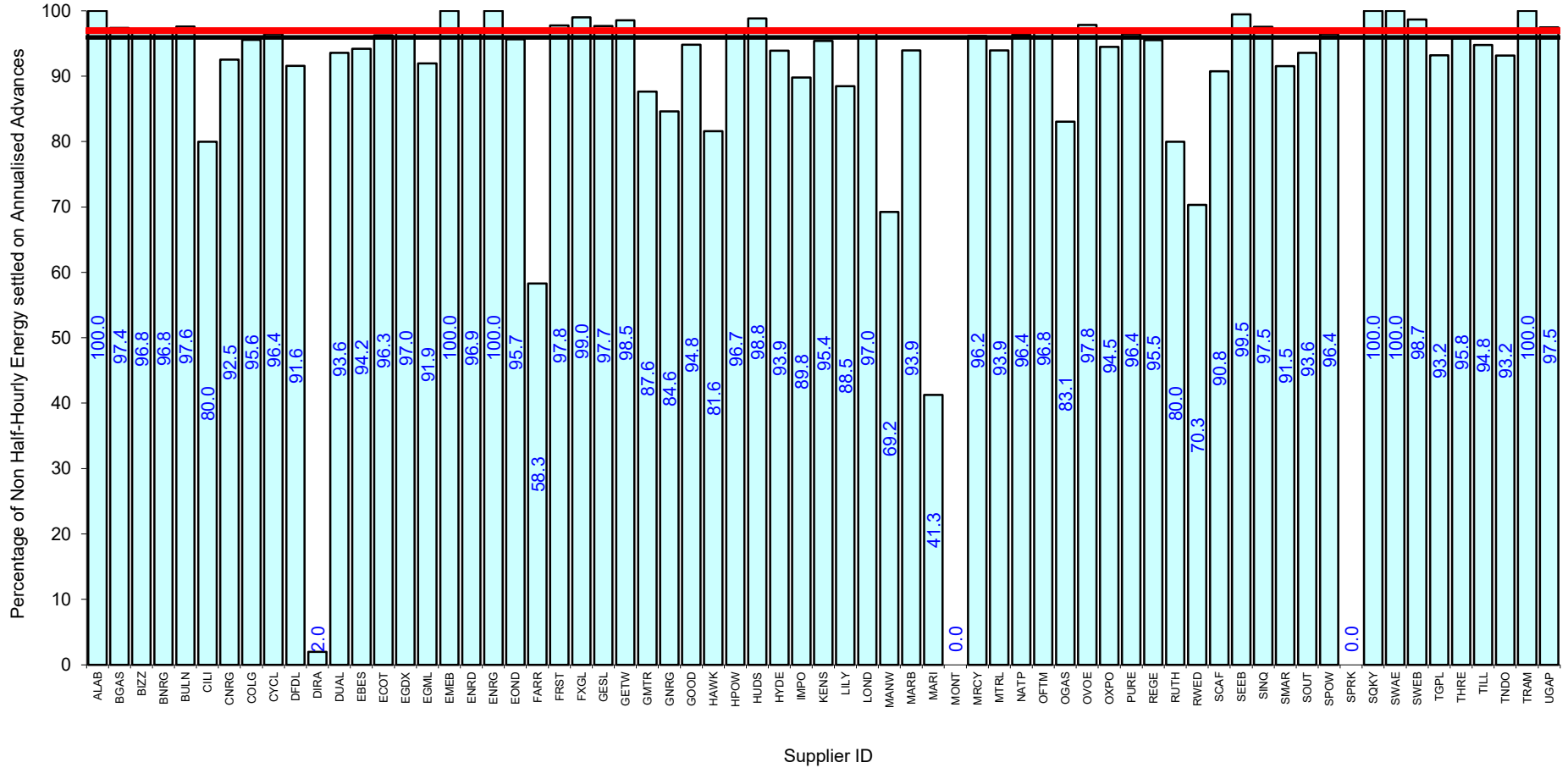


Serial SP08a. GSP Group: Midlands (\_E). Reporting Period 1 to 31 January 2024 . Reconciliation Run: RF



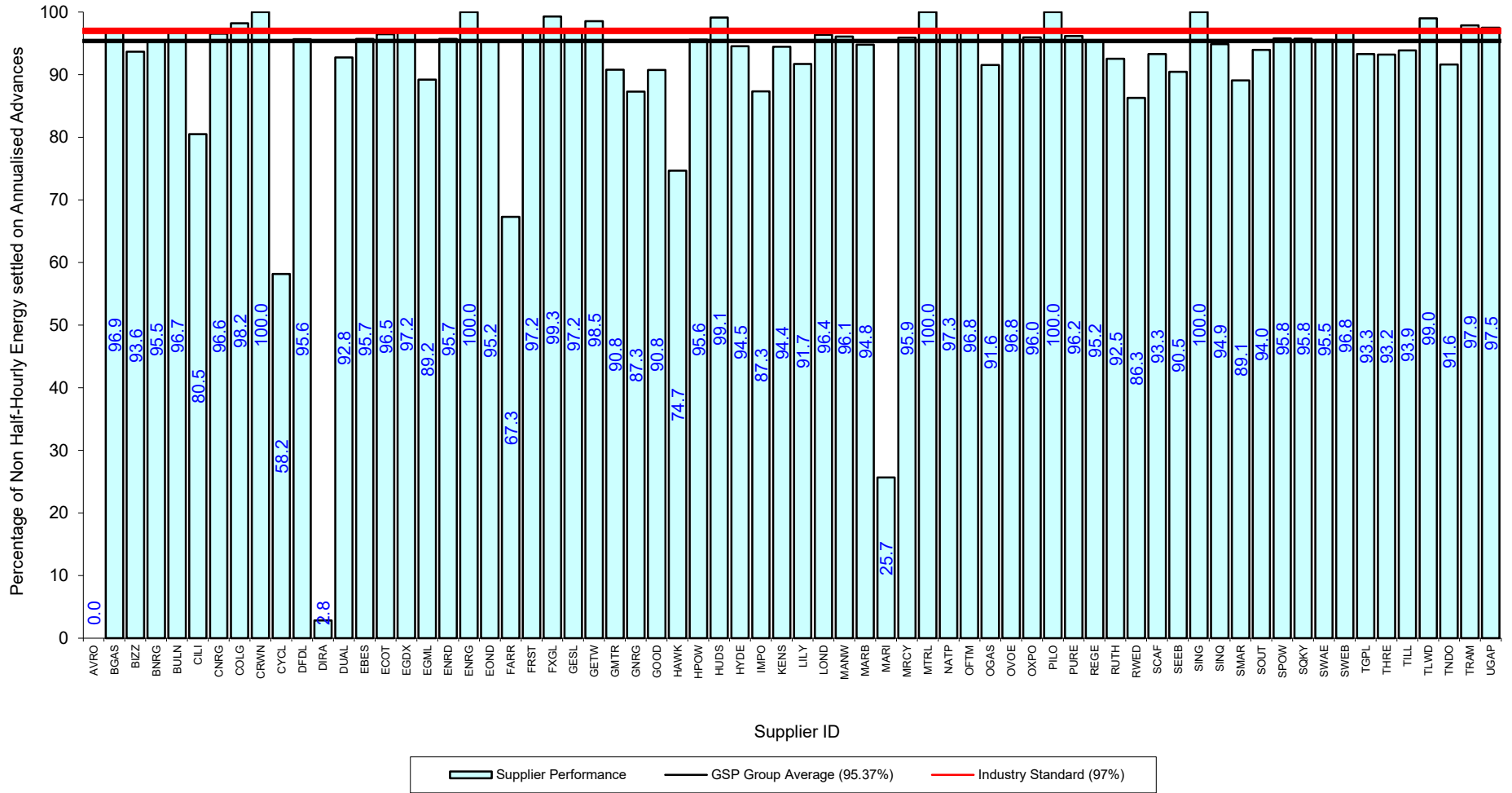
Supplier Performance
  GSP Group Average (96.09%)
  Industry Standard (97%)

Serial SP08a. GSP Group: Northern (\_F). Reporting Period 1 to 31 January 2024 . Reconciliation Run: RF

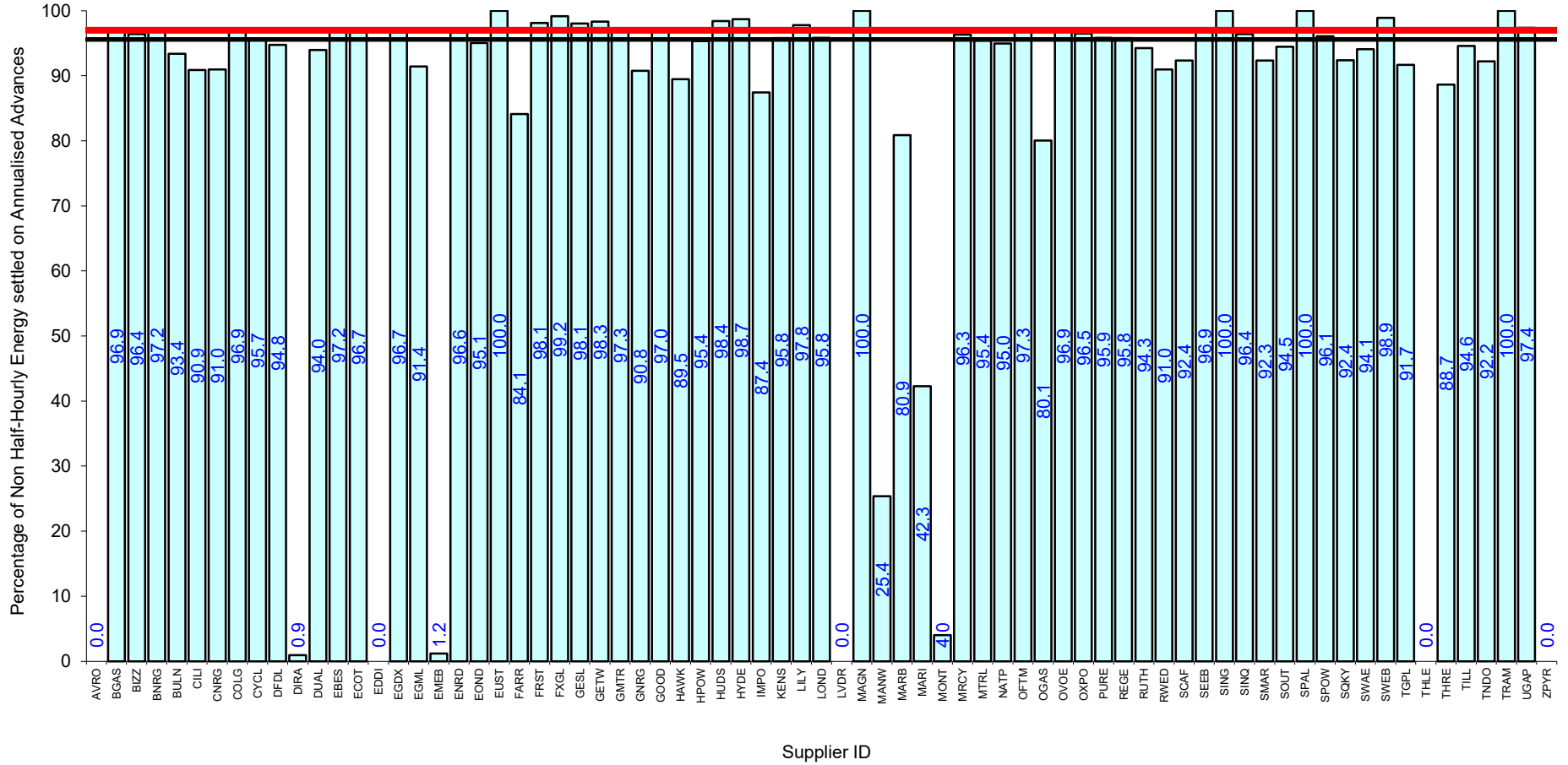


Supplier Performance
  GSP Group Average (95.95%)
  Industry Standard (97%)

Serial SP08a. GSP Group: North Western (\_G). Reporting Period 1 to 31 January 2024 . Reconciliation Run: RF

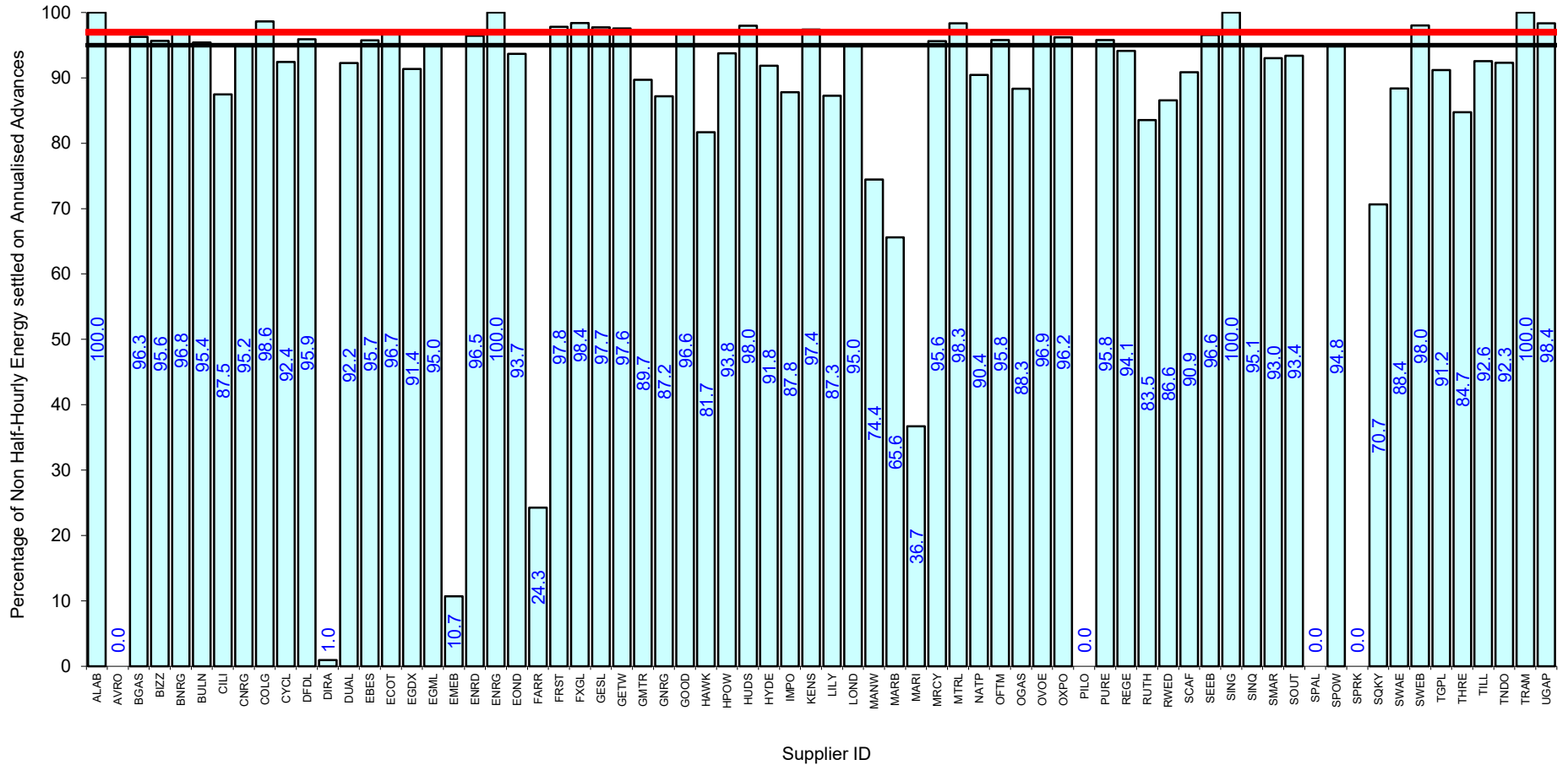


Serial SP08a. GSP Group: Southern (\_H). Reporting Period 1 to 31 January 2024 . Reconciliation Run: RF



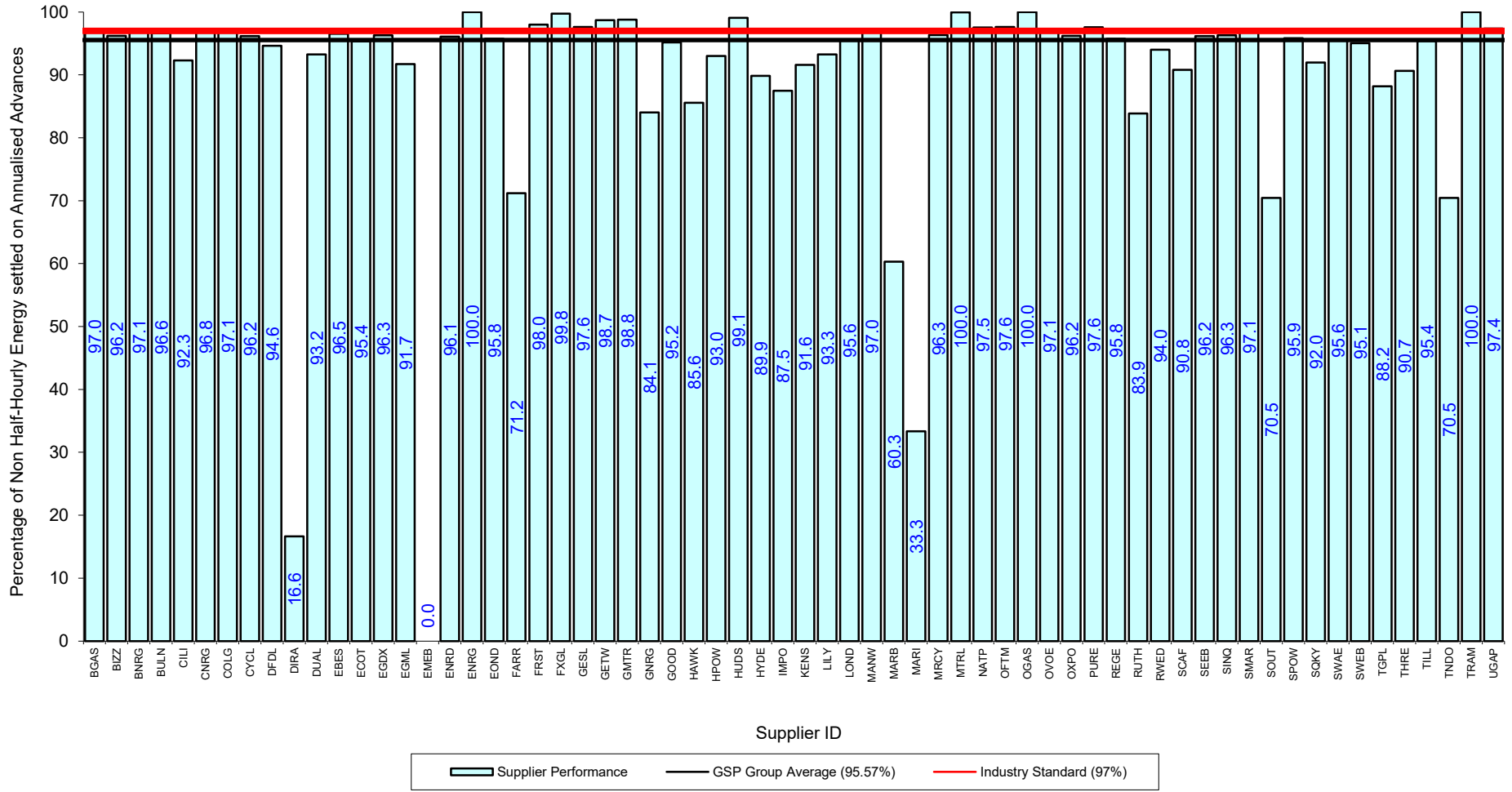


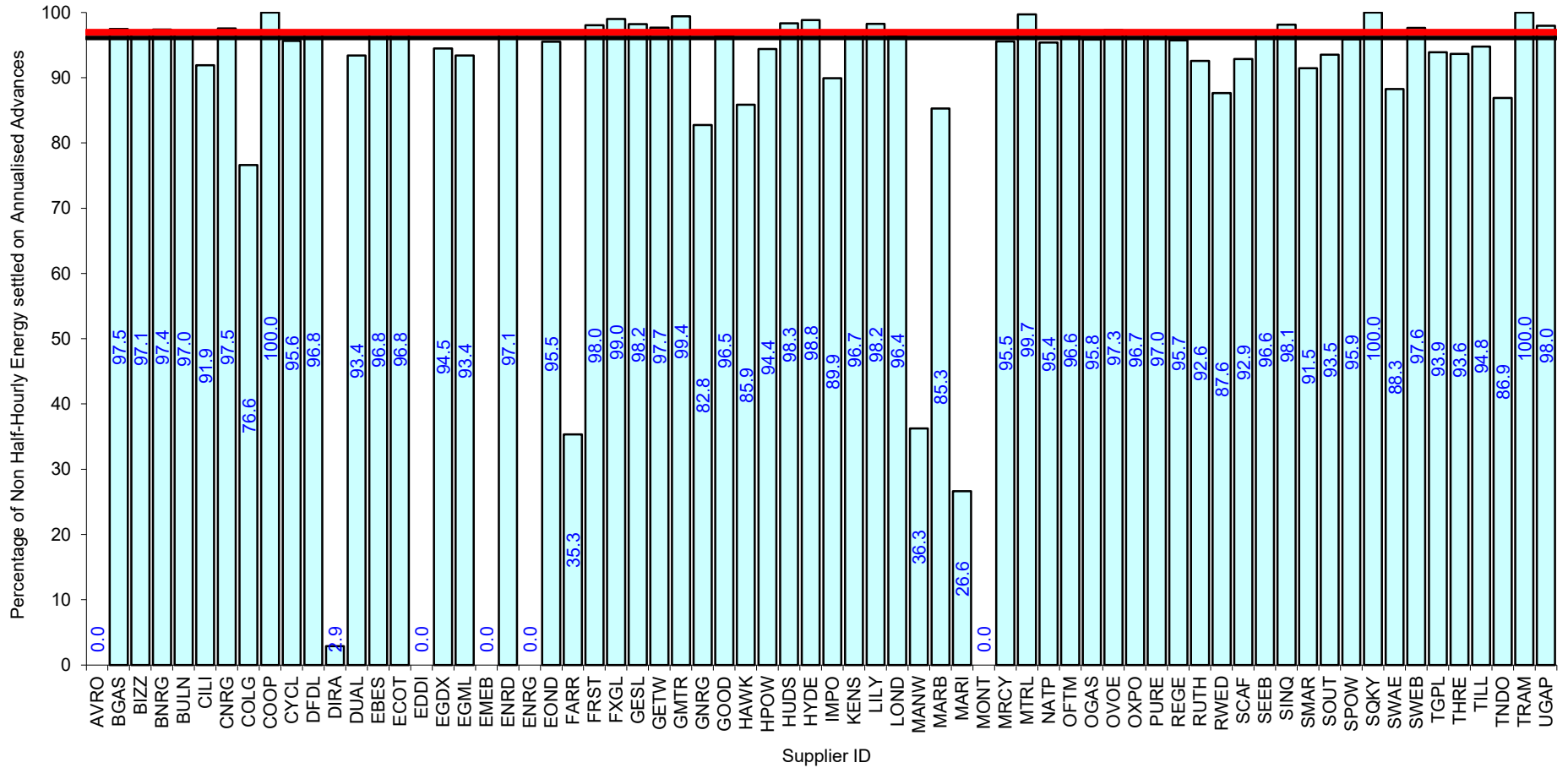
Serial SP08a. GSP Group: South Eastern (\_J). Reporting Period 1 to 31 January 2024 . Reconciliation Run: RF

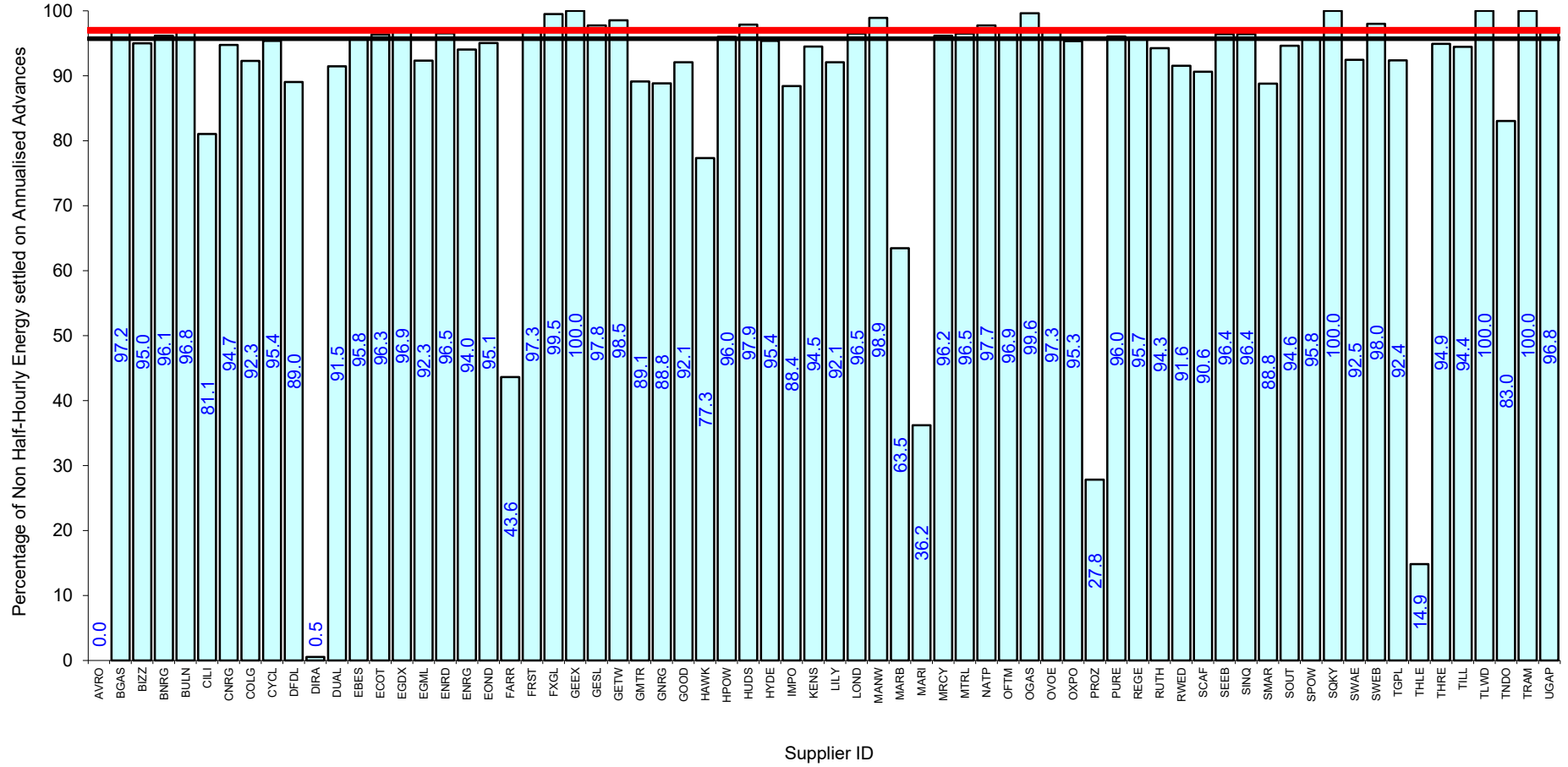


Supplier Performance
  GSP Group Average (94.99%)
  Industry Standard (97%)

Serial SP08a. GSP Group: South Wales (\_K). Reporting Period 1 to 31 January 2024 . Reconciliation Run: RF







Serial SP08a. GSP Group: South Scotland (\_N). Reporting Period 1 to 31 January 2024 . Reconciliation Run: RF

