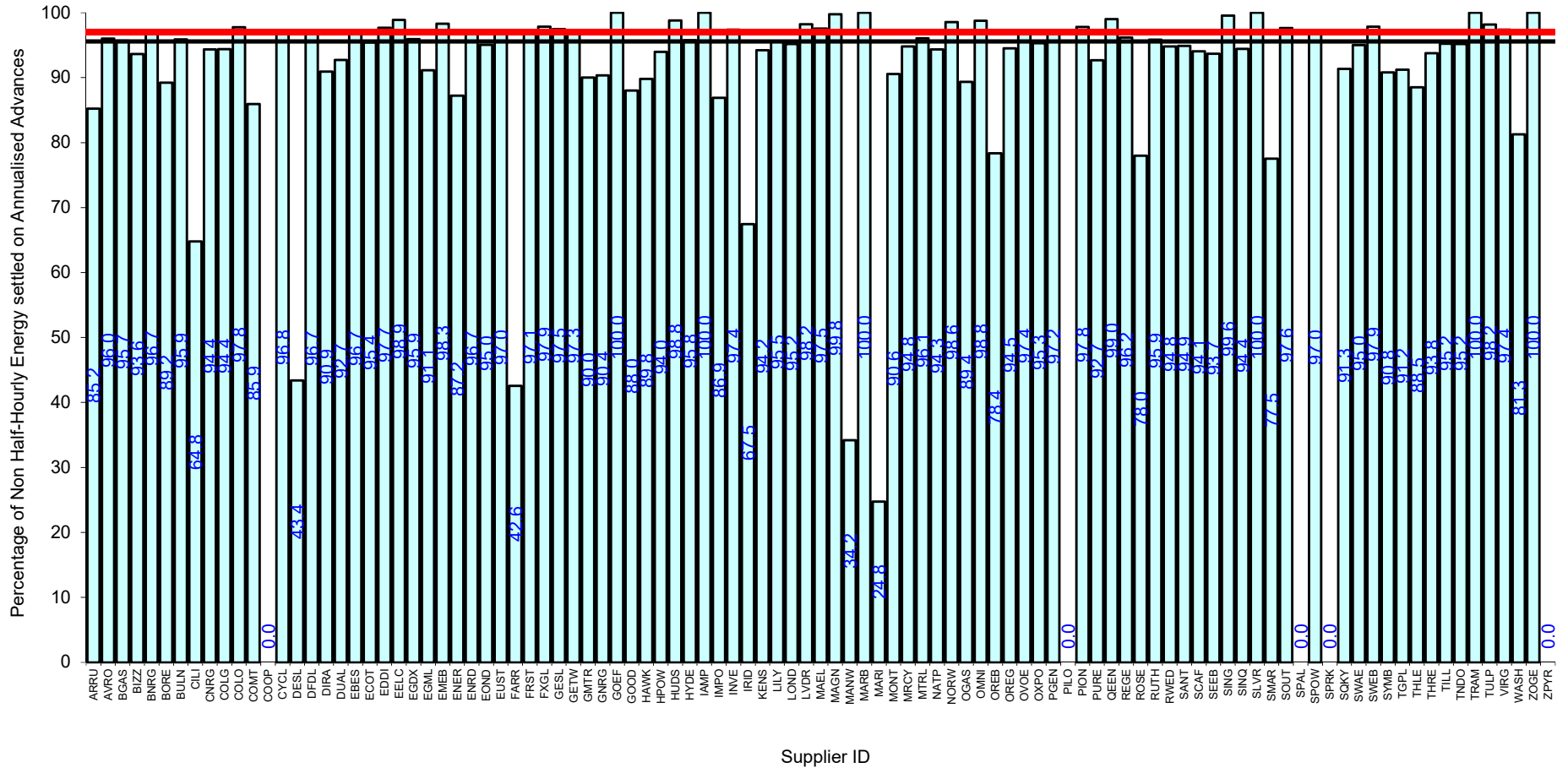
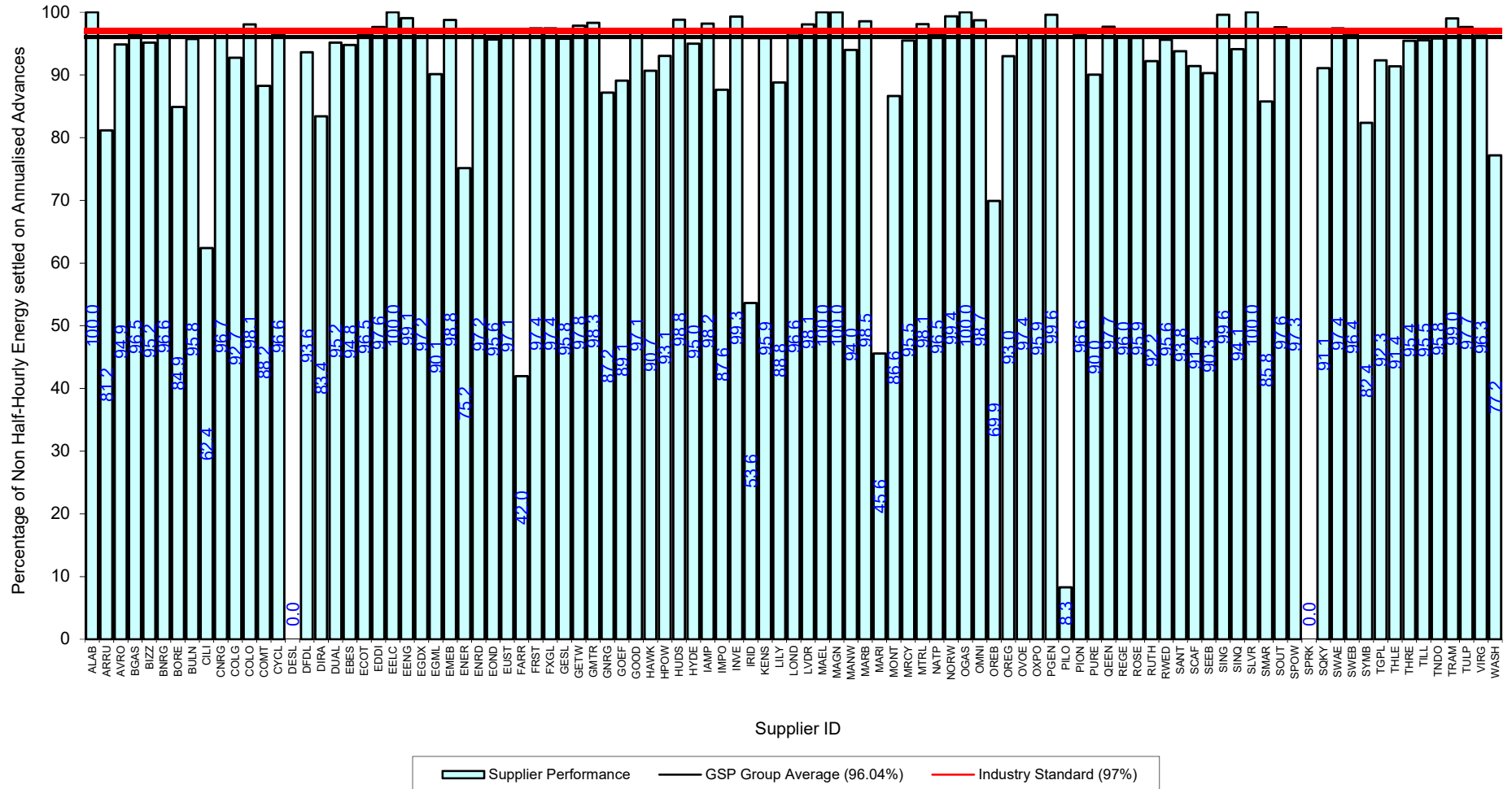
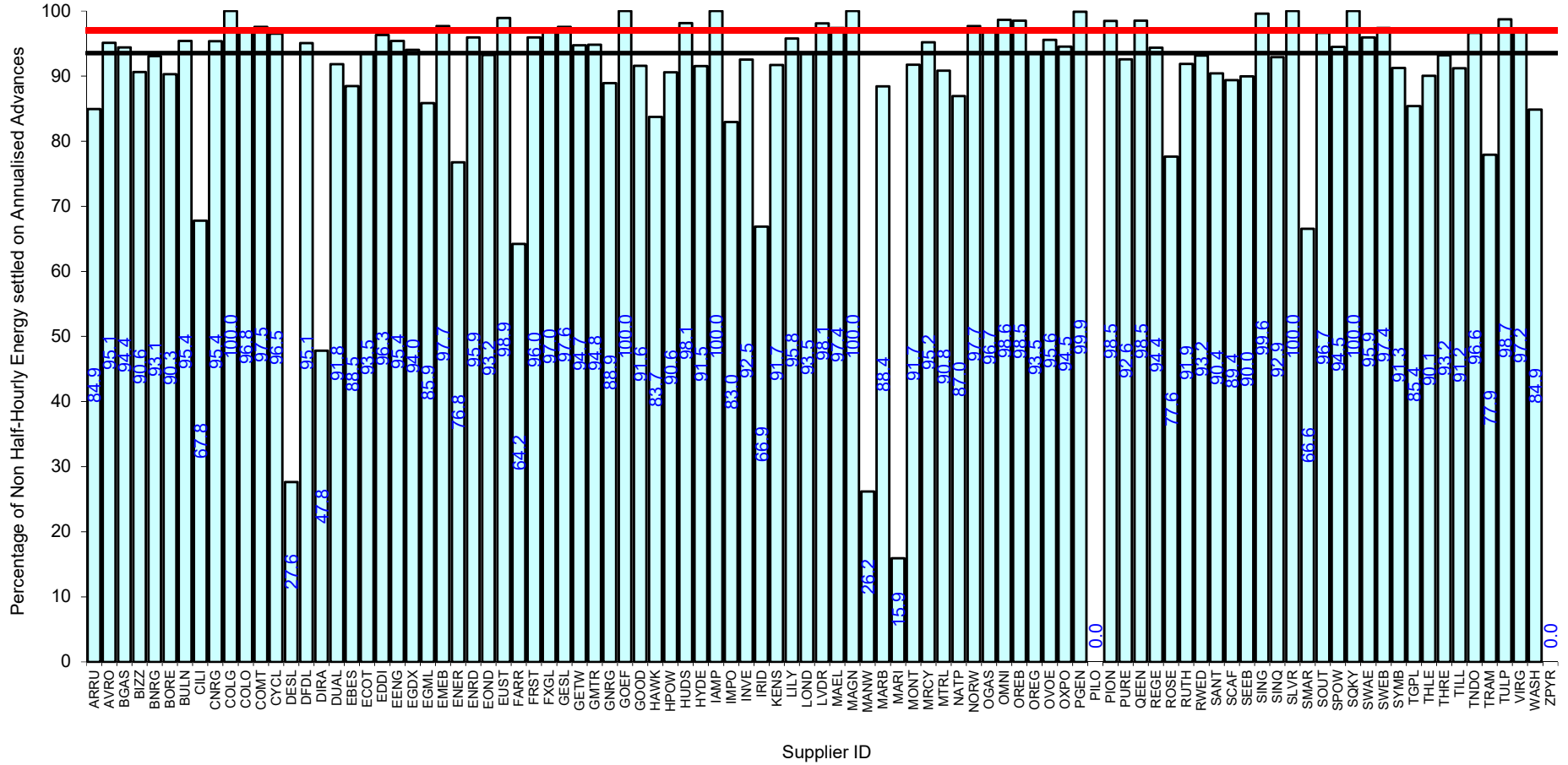


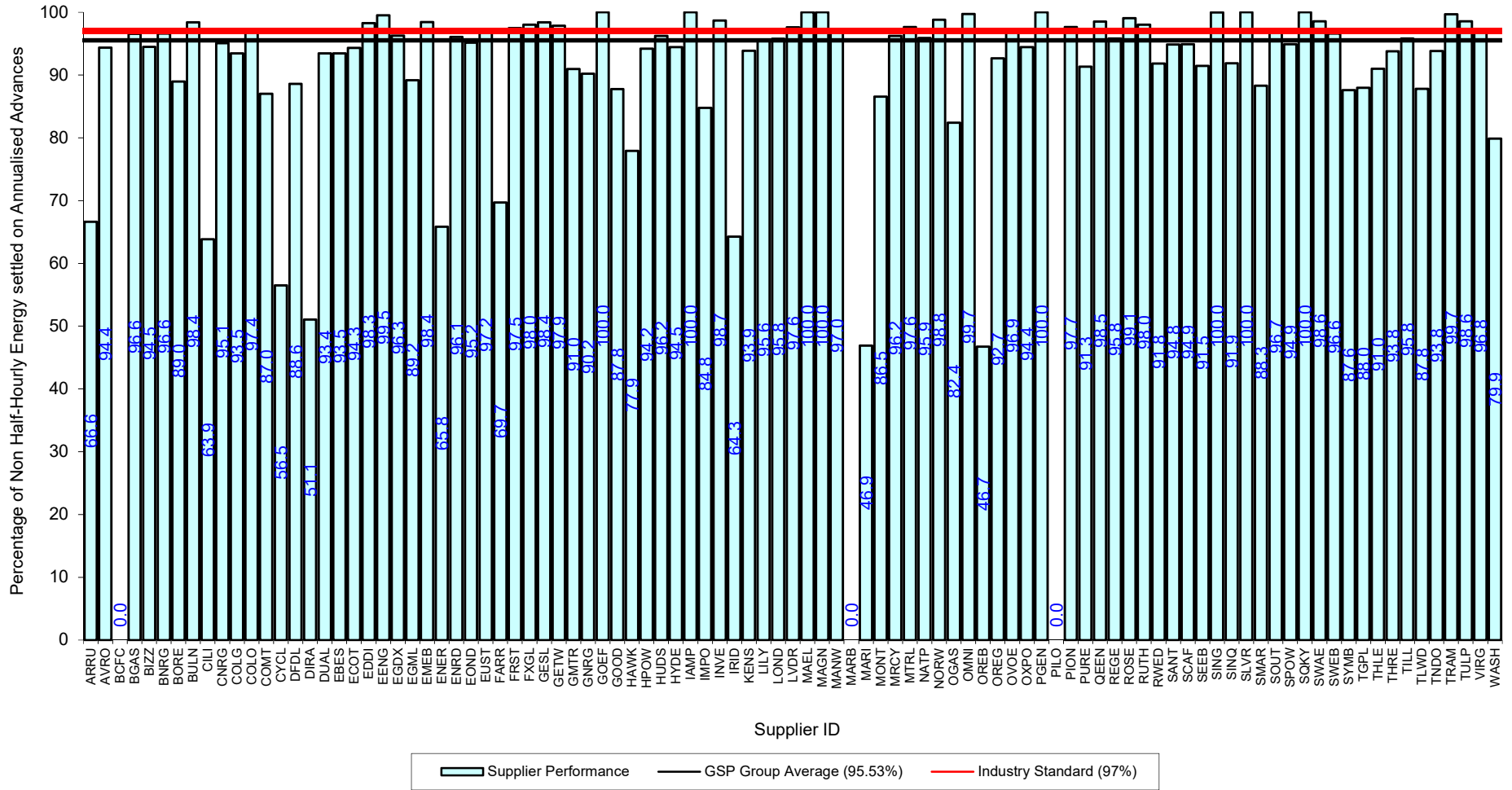
Serial SP08a. GSP Group: Eastern (_A). Reporting Period 1 to 31 December 2022 . Reconciliation Run: RF



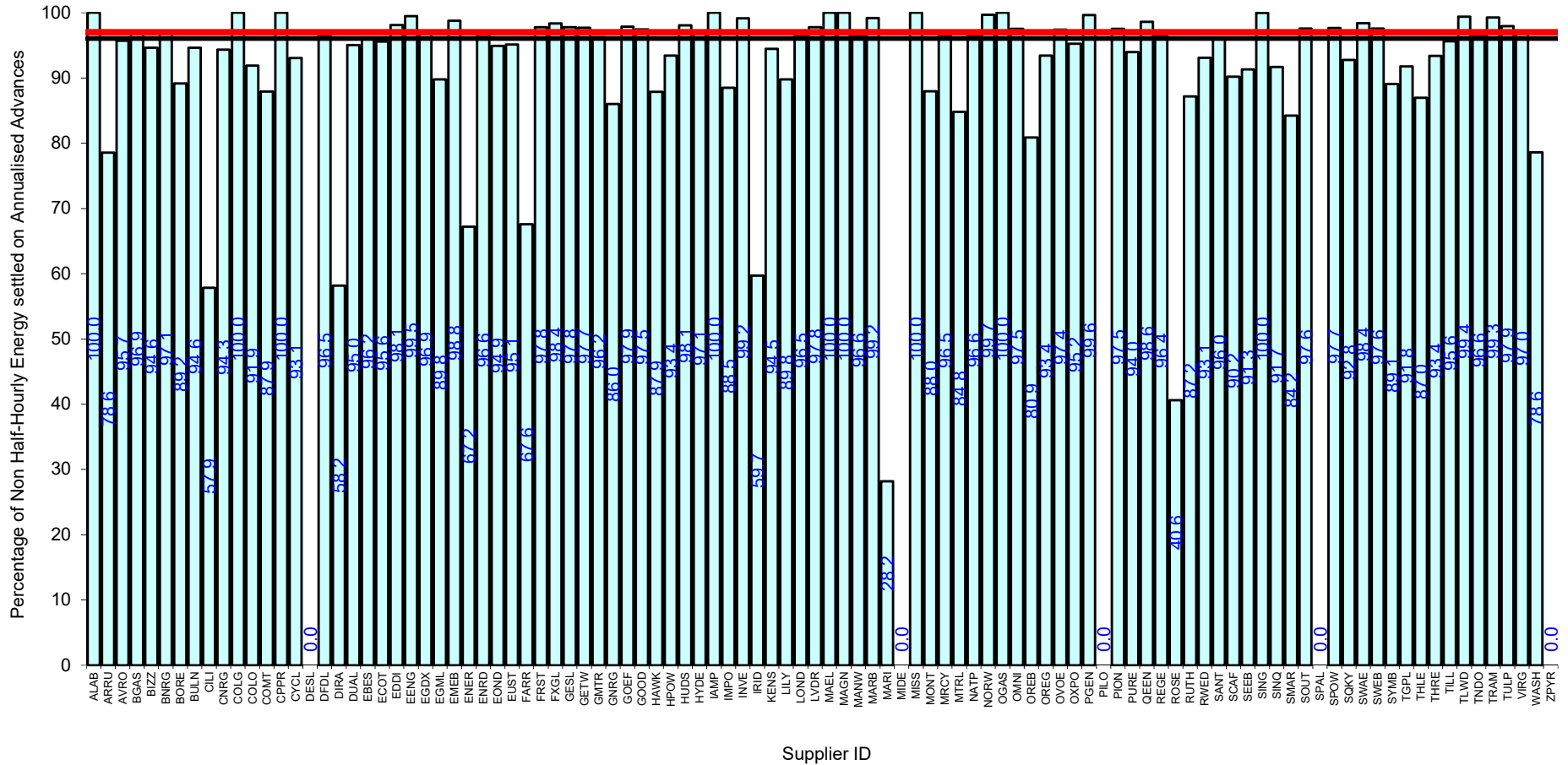
Serial SP08a. GSP Group: East Midlands (_B). Reporting Period 1 to 31 December 2022 . Reconciliation Run: RF

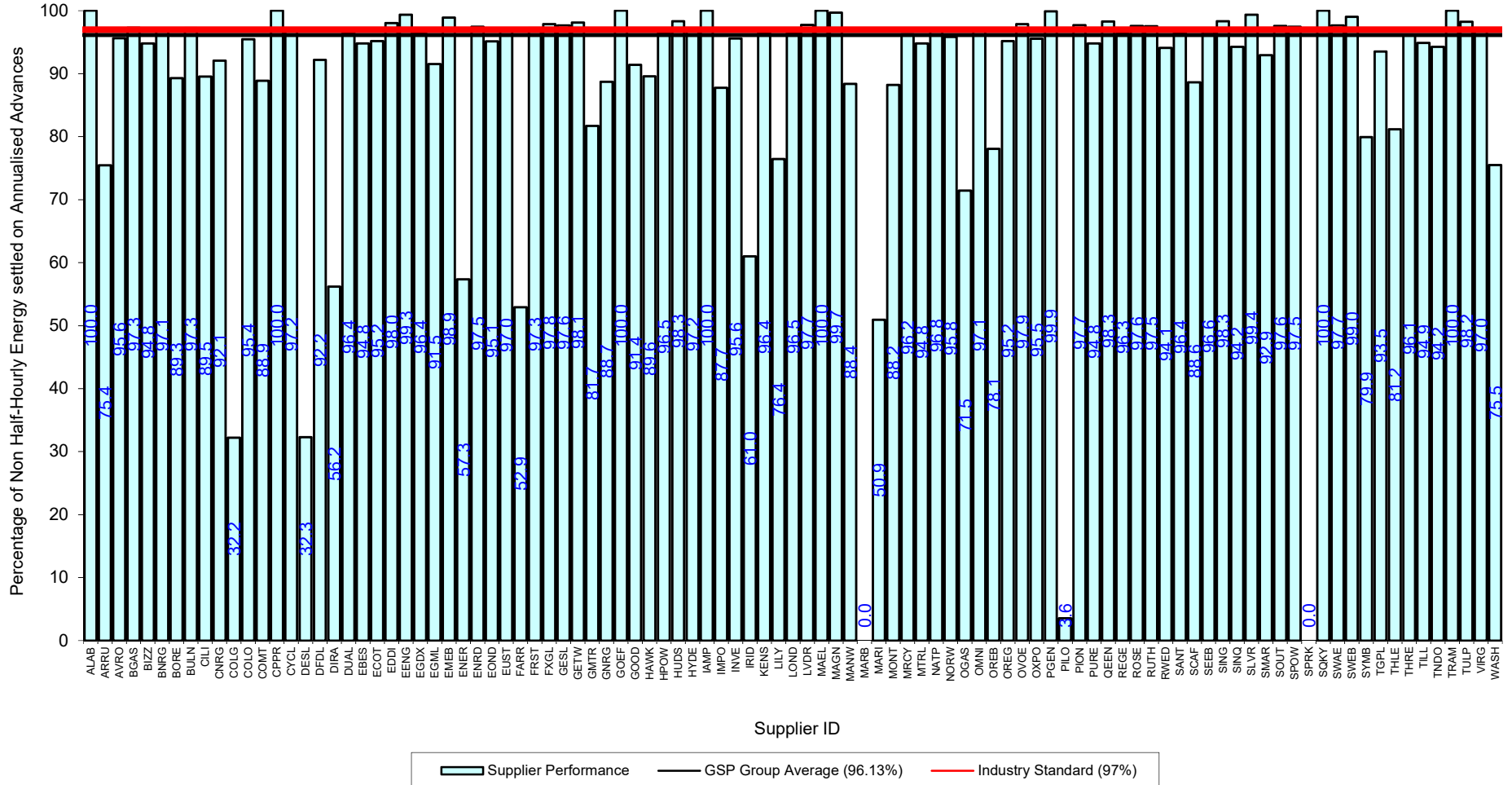




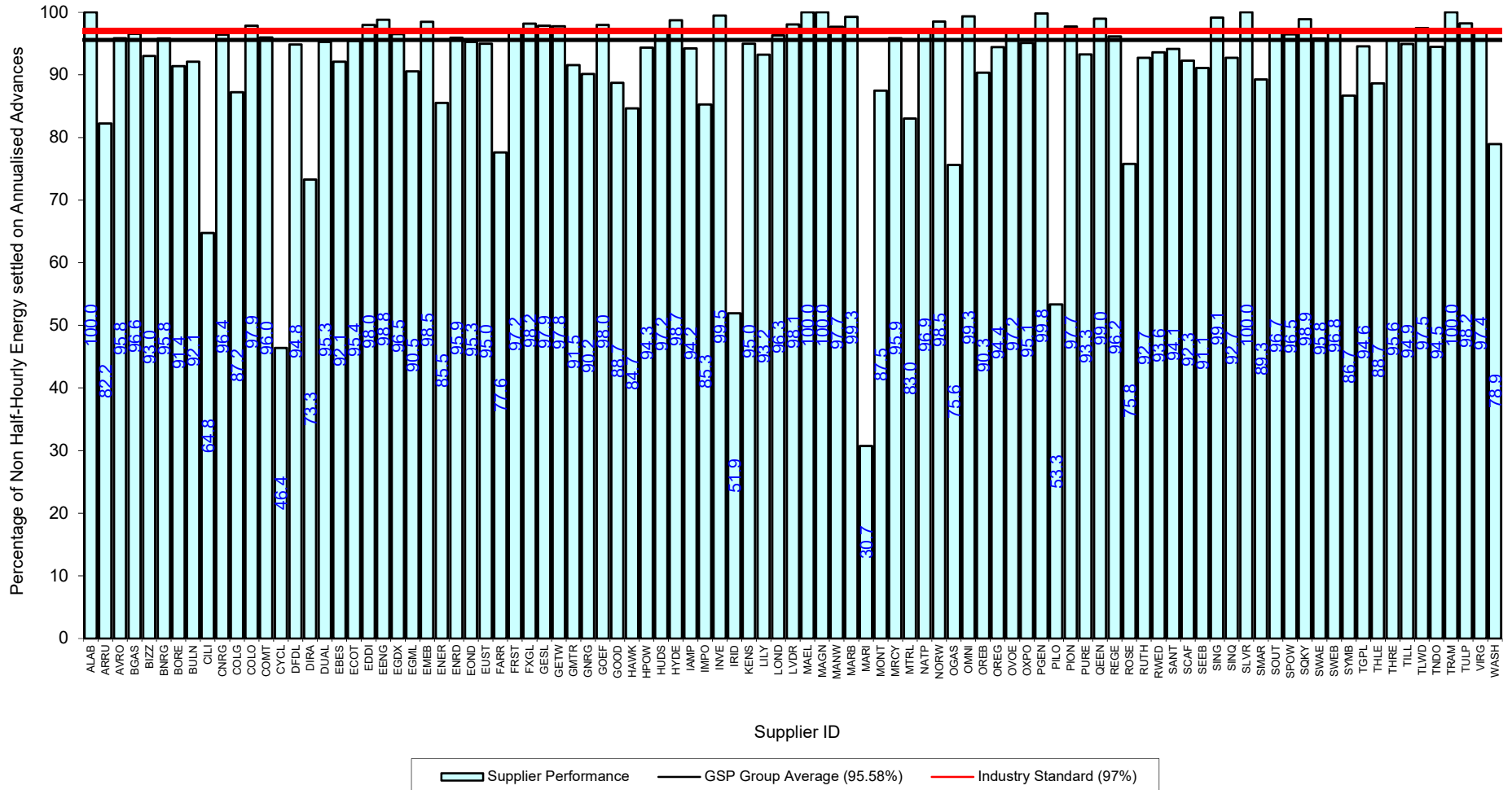


Serial SP08a. GSP Group: Midlands (_E). Reporting Period 1 to 31 December 2022 . Reconciliation Run: RF

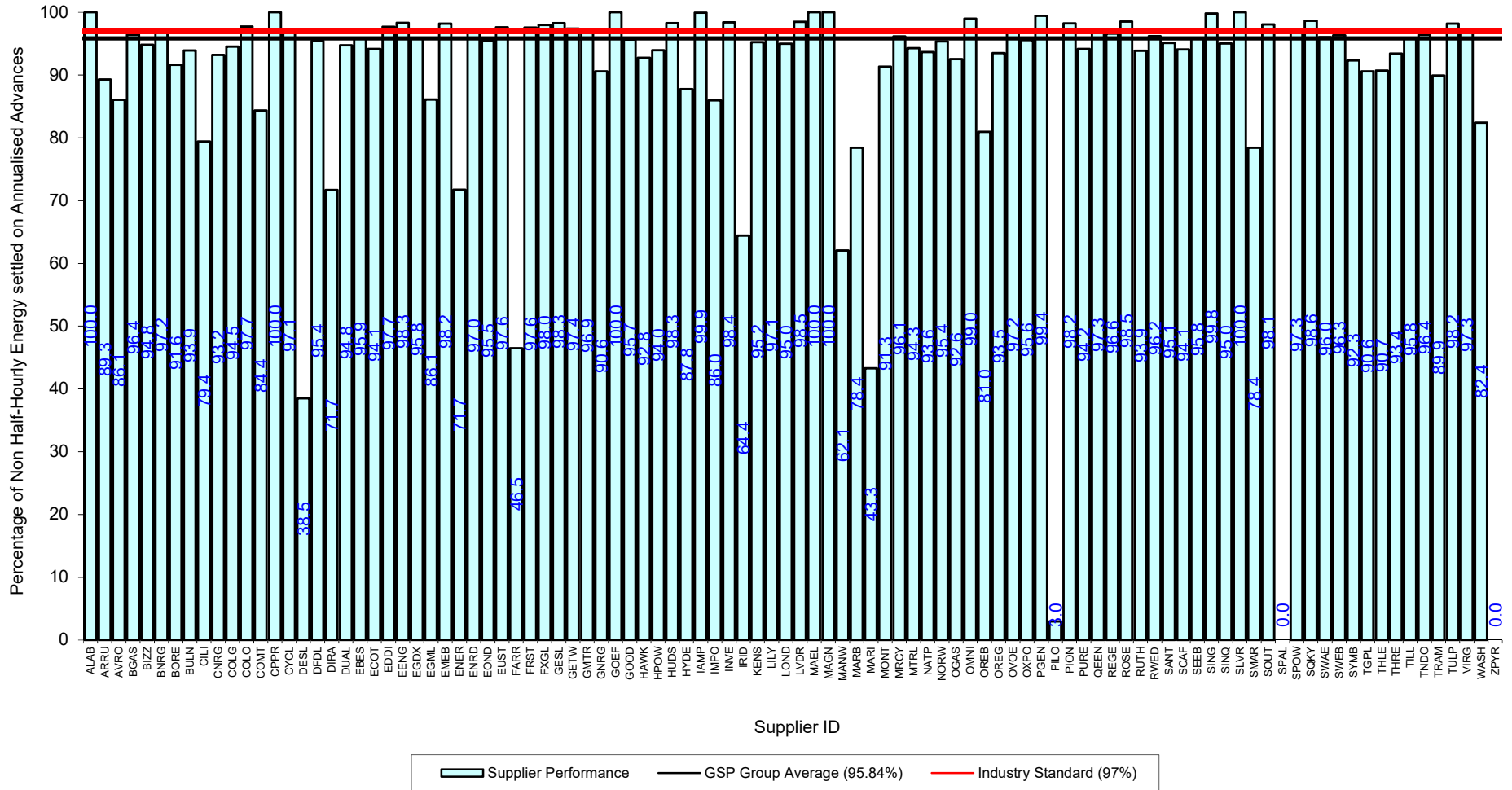




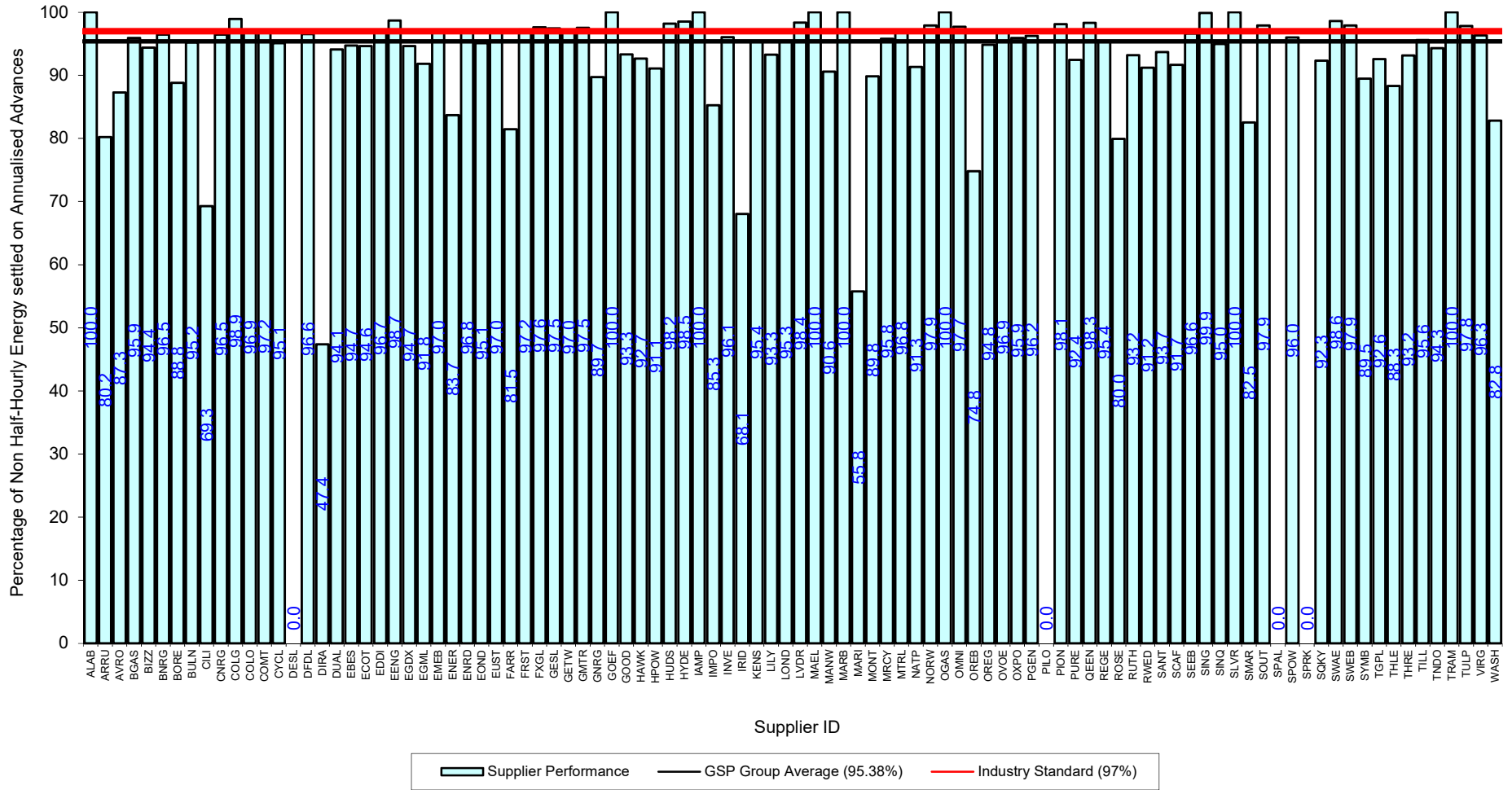
Serial SP08a. GSP Group: North Western (_G). Reporting Period 1 to 31 December 2022 . Reconciliation Run: RF



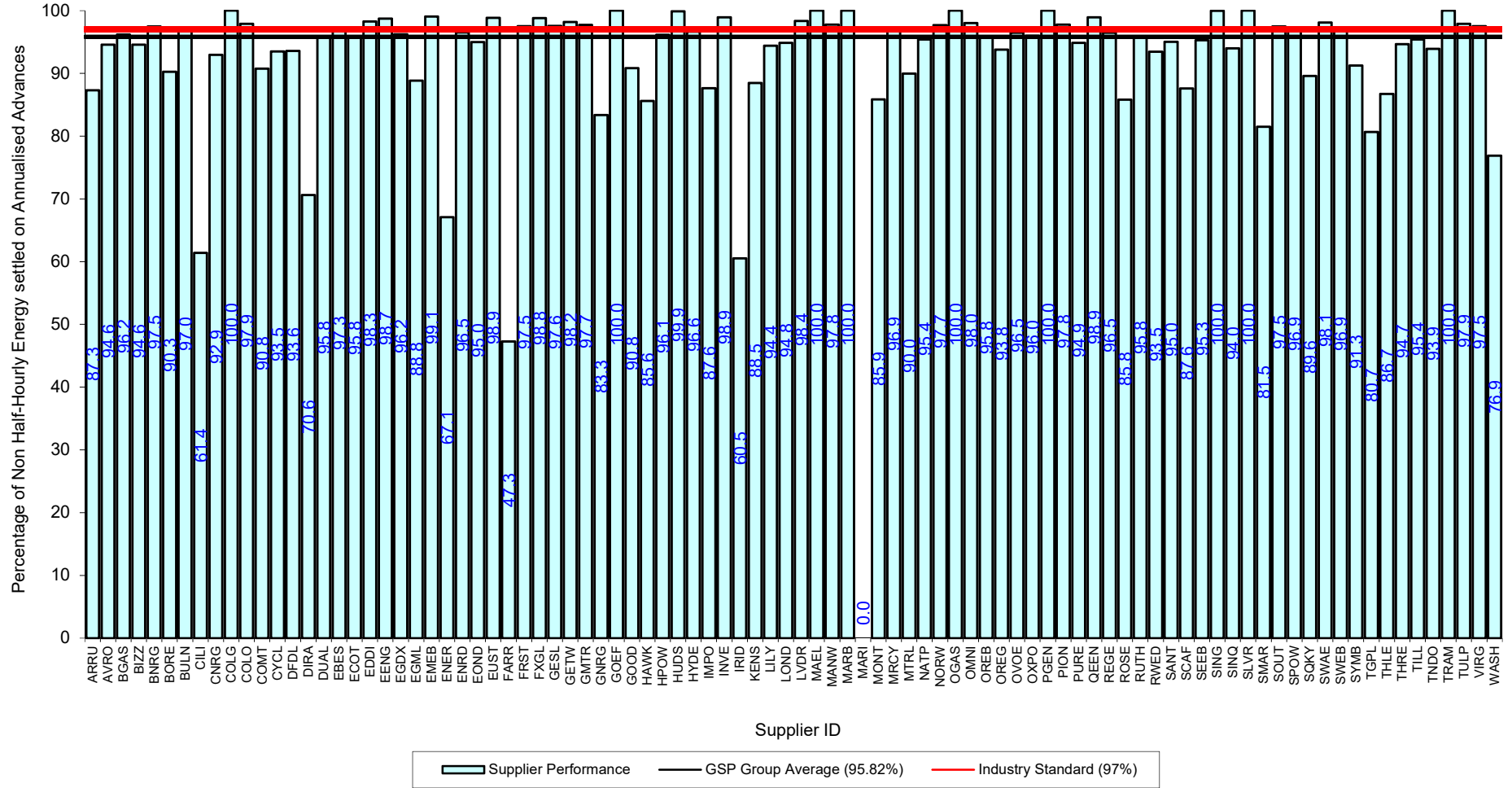
Serial SP08a. GSP Group: Southern (_H). Reporting Period 1 to 31 December 2022 . Reconciliation Run: RF

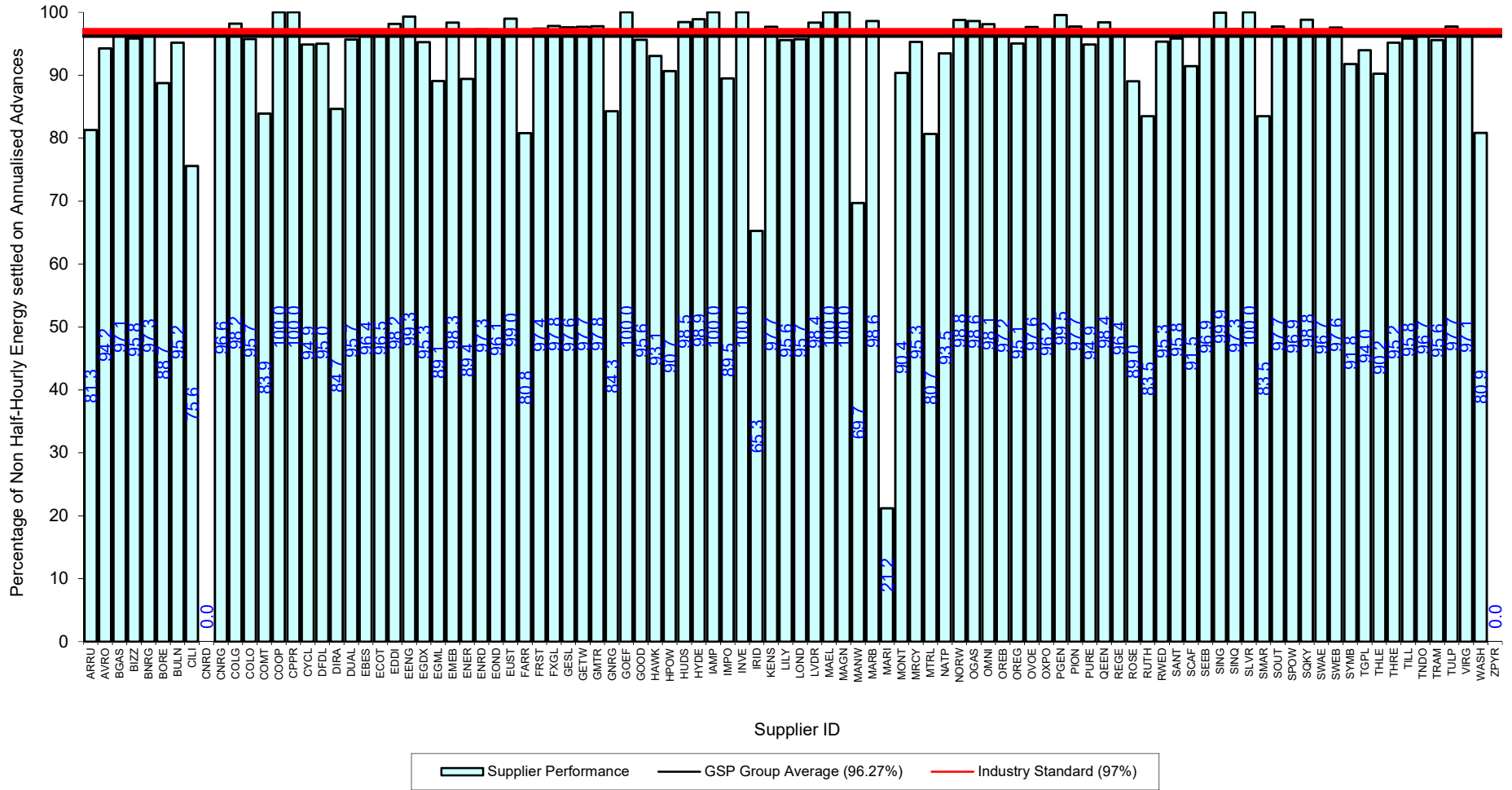


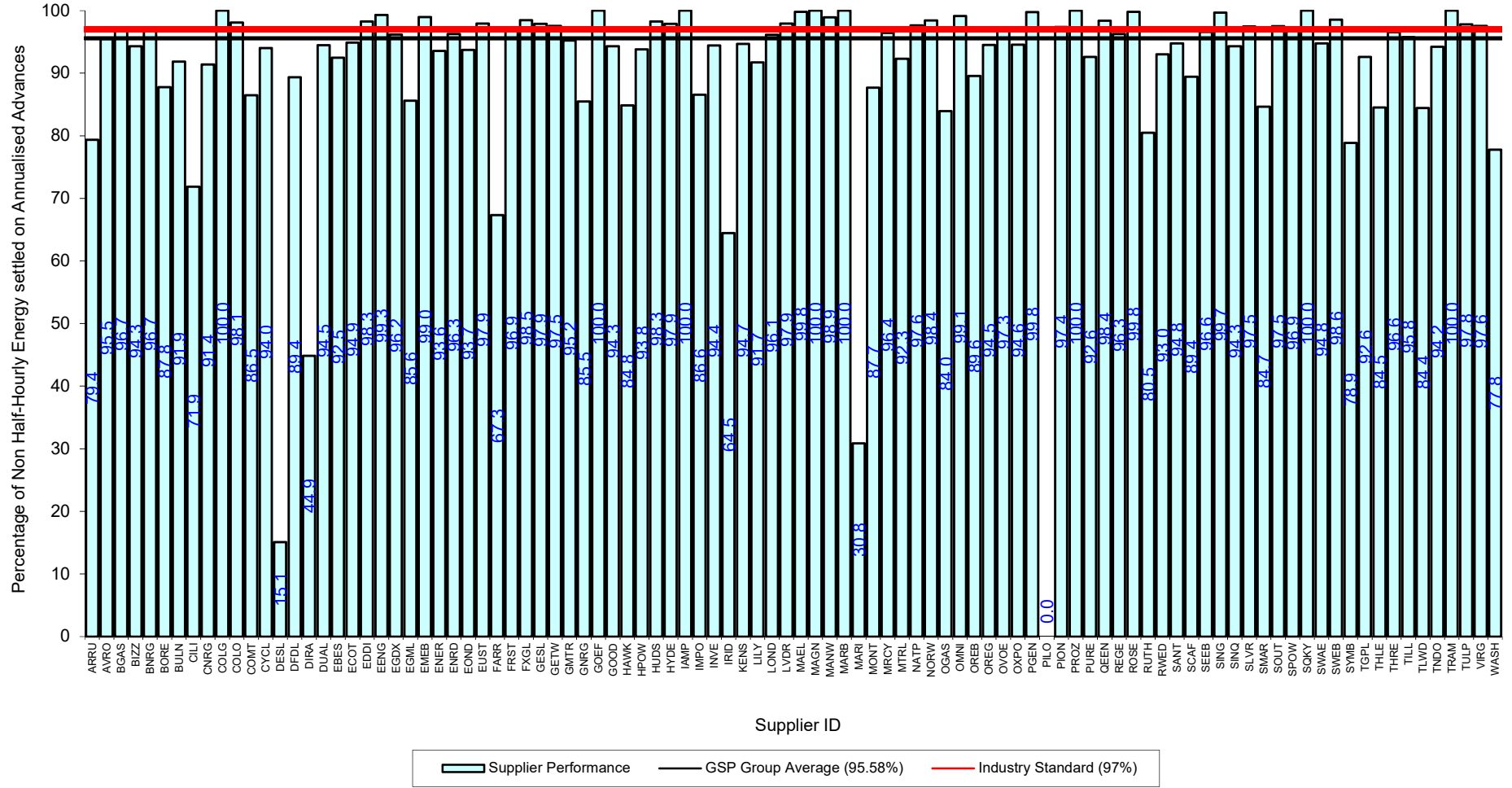
Serial SP08a. GSP Group: South Eastern (_J). Reporting Period 1 to 31 December 2022 . Reconciliation Run: RF



Serial SP08a. GSP Group: South Wales (_K). Reporting Period 1 to 31 December 2022 . Reconciliation Run: RF







Serial SP08a. GSP Group: South Scotland (_N). Reporting Period 1 to 31 December 2022 . Reconciliation Run: RF

