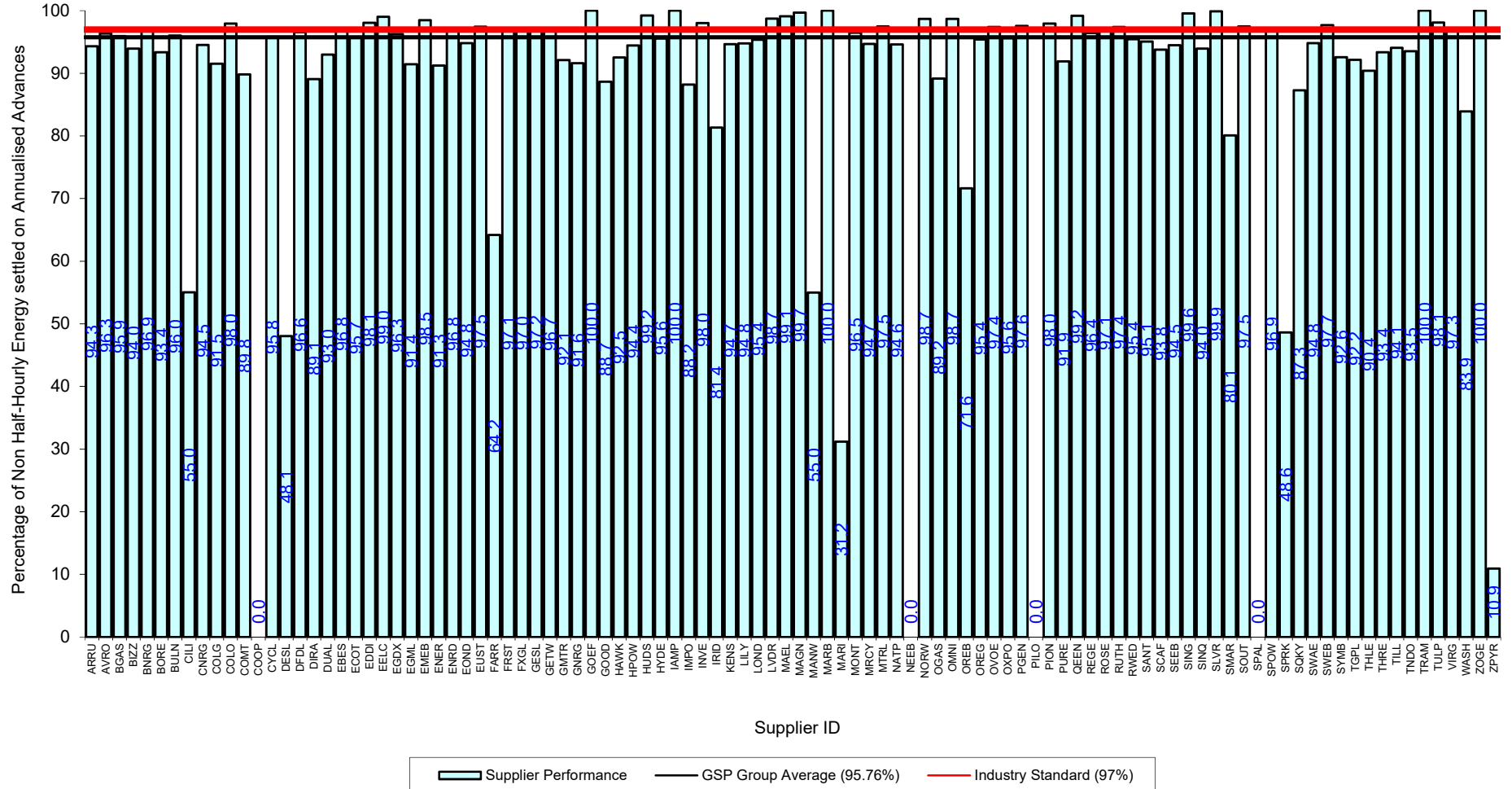
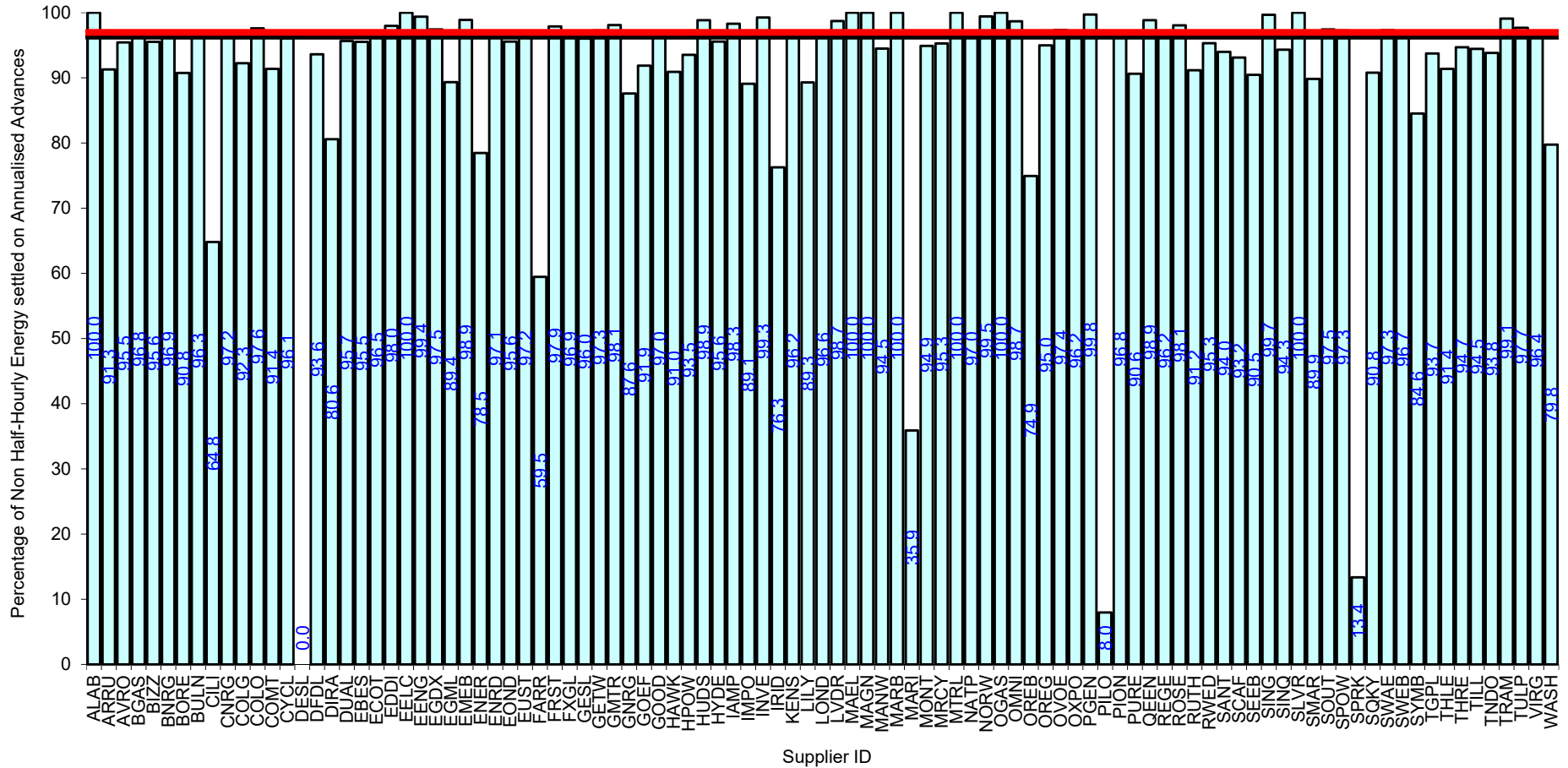
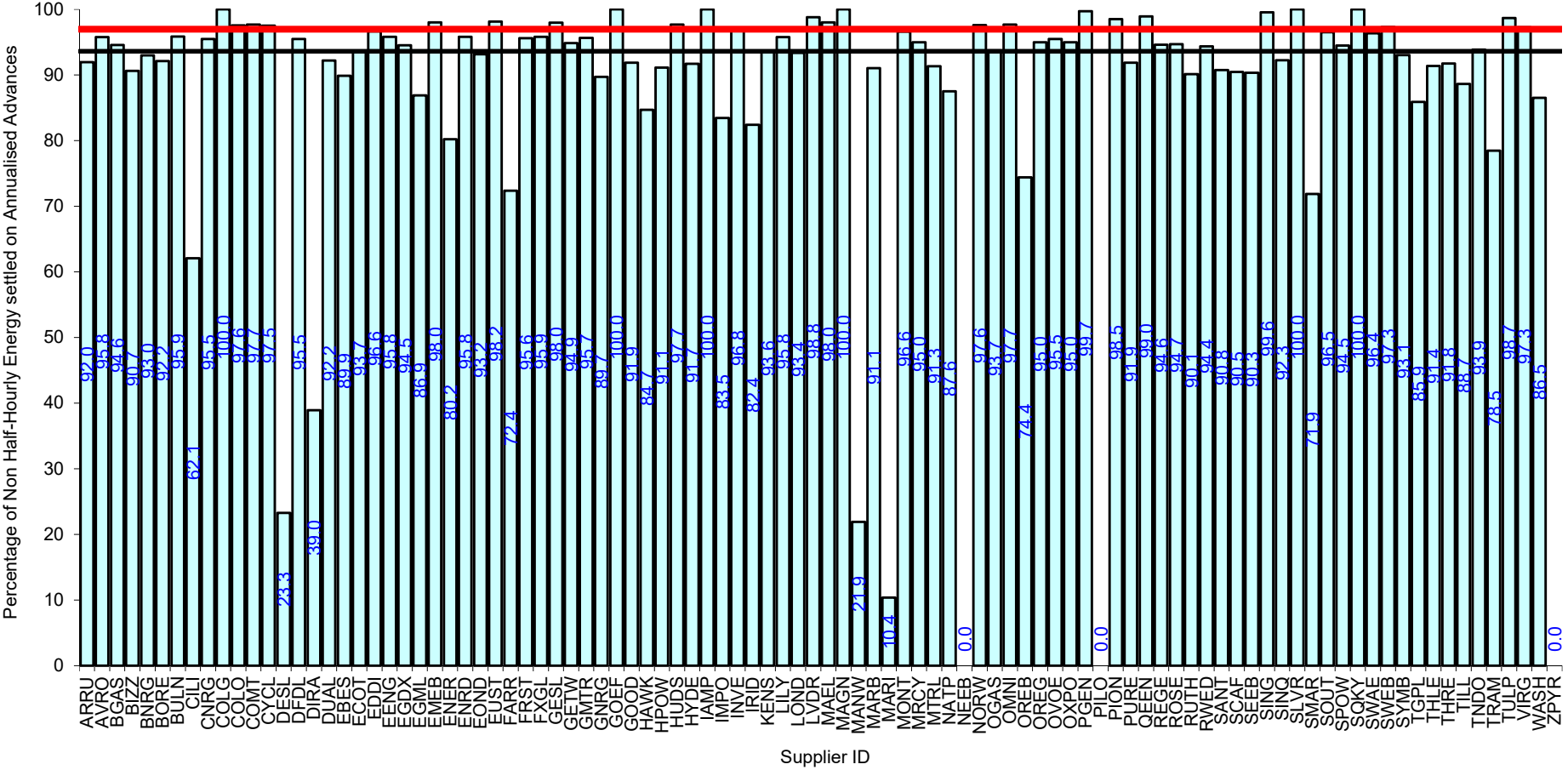


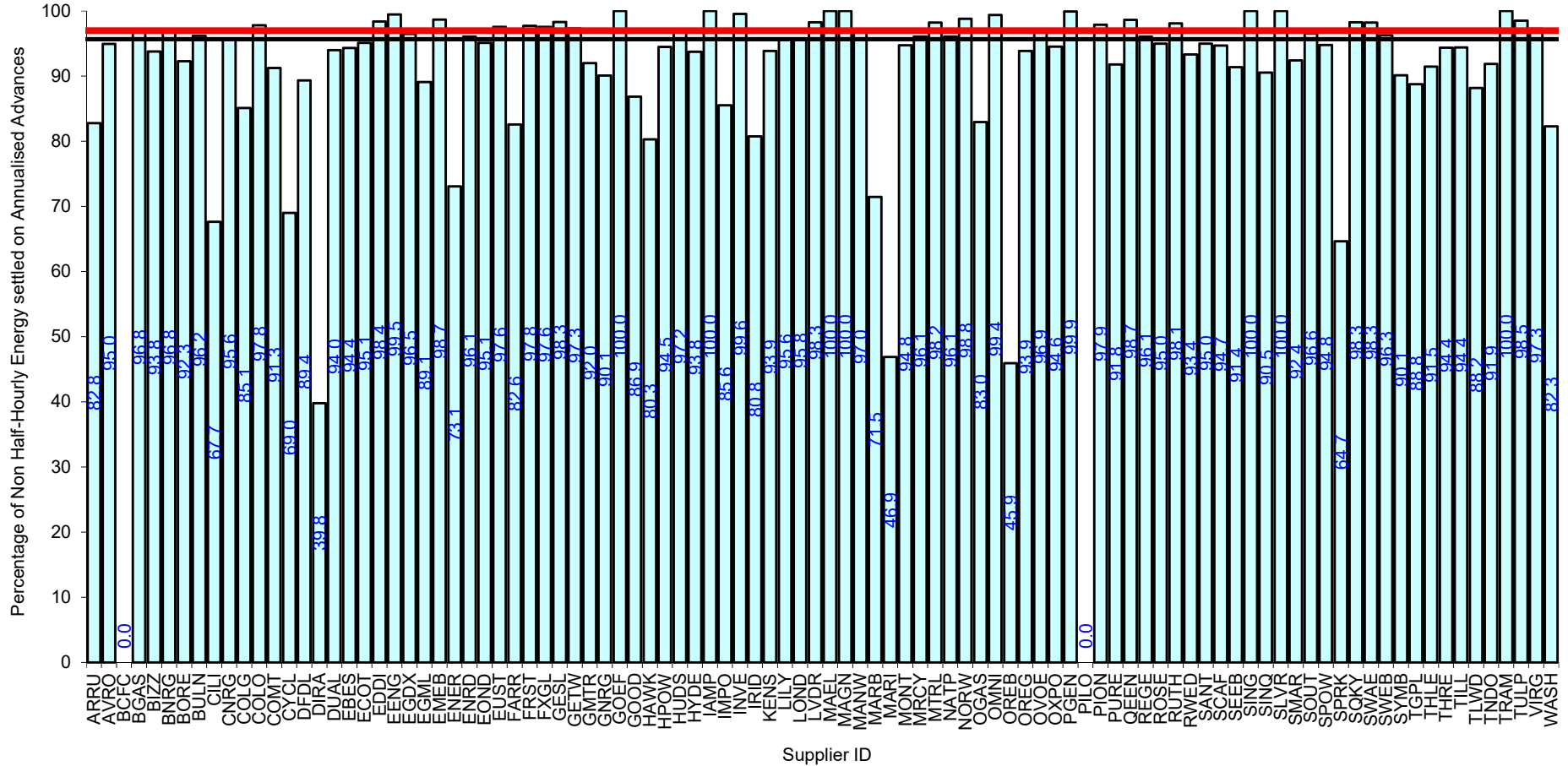
Serial SP08a. GSP Group: Eastern (\_A). Reporting Period 1 to 30 November 2022 . Reconciliation Run: RF



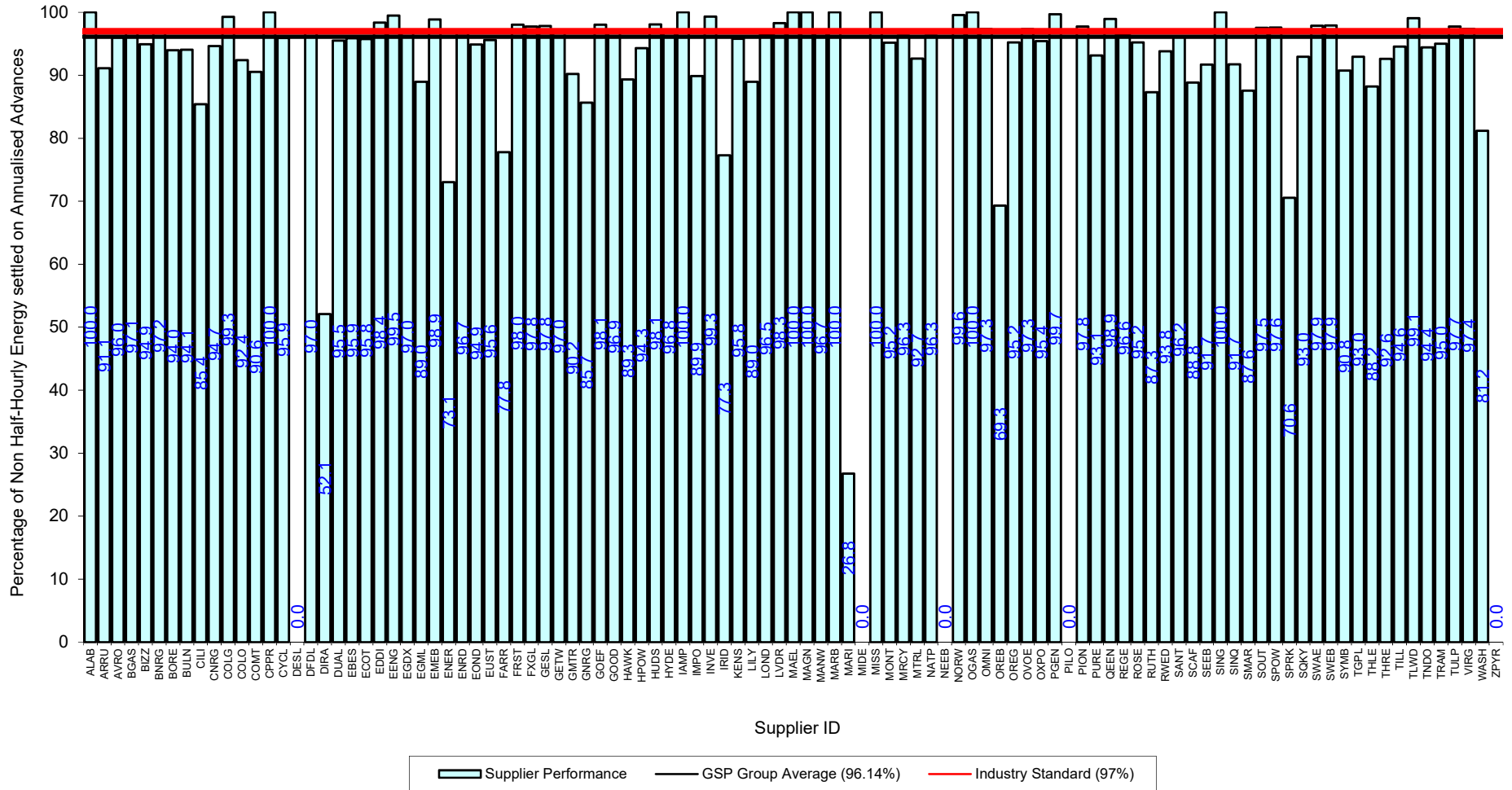


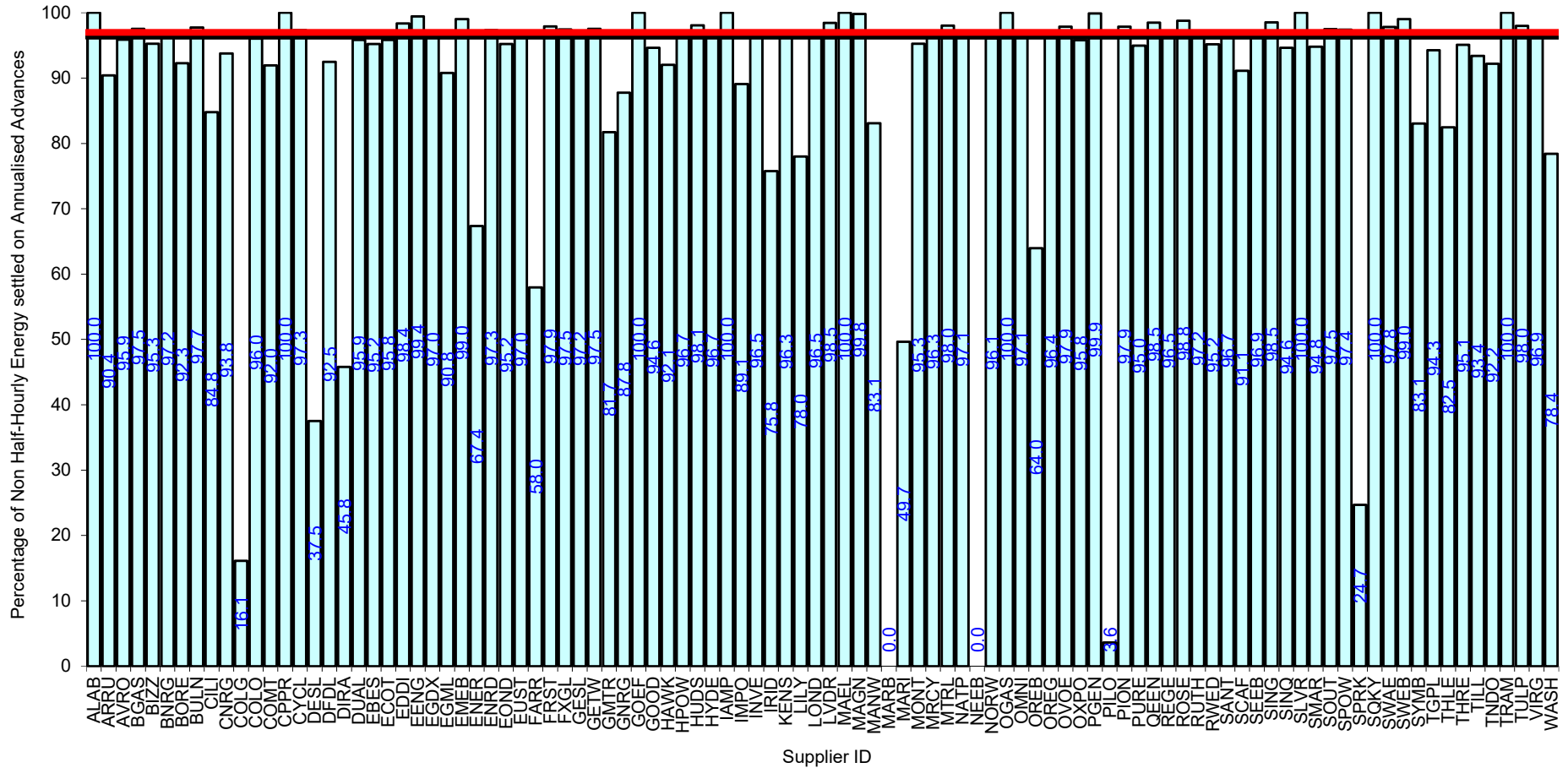


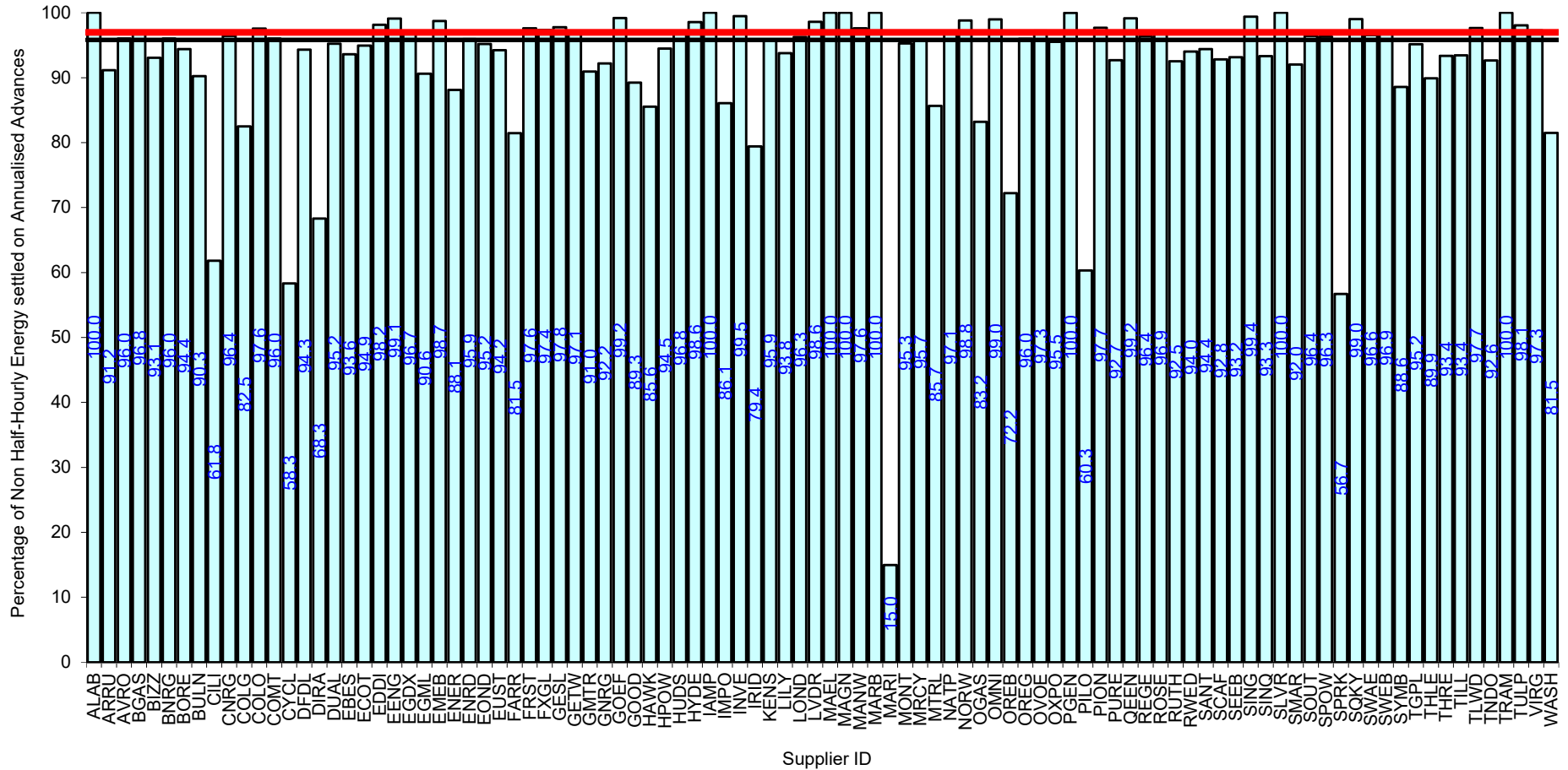
Supplier Performance
  GSP Group Average (93.63%)
  Industry Standard (97%)



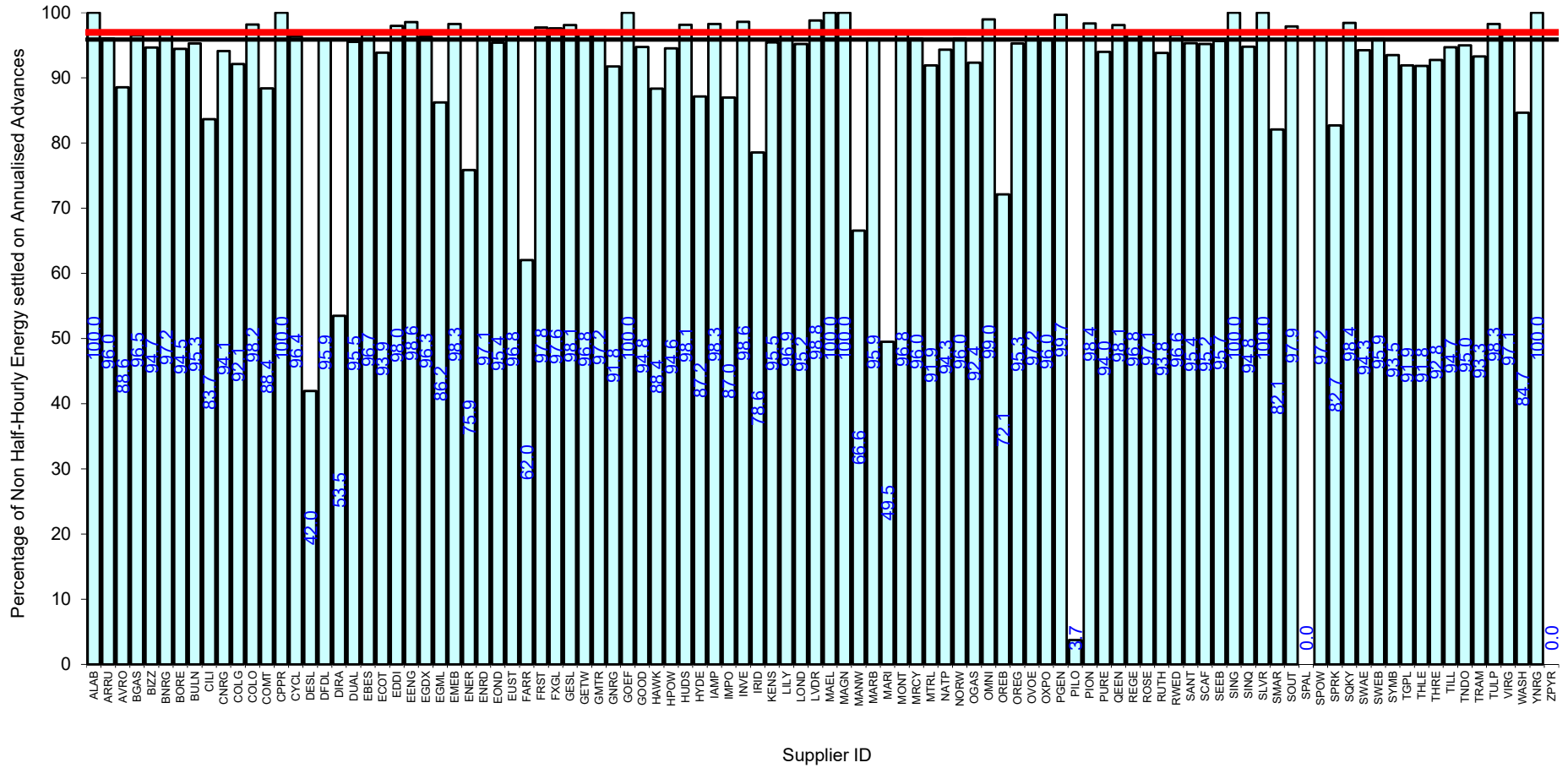
Serial SP08a. GSP Group: Midlands (\_E). Reporting Period 1 to 30 November 2022 . Reconciliation Run: RF





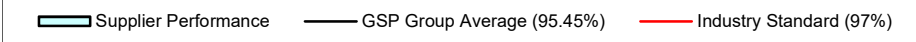
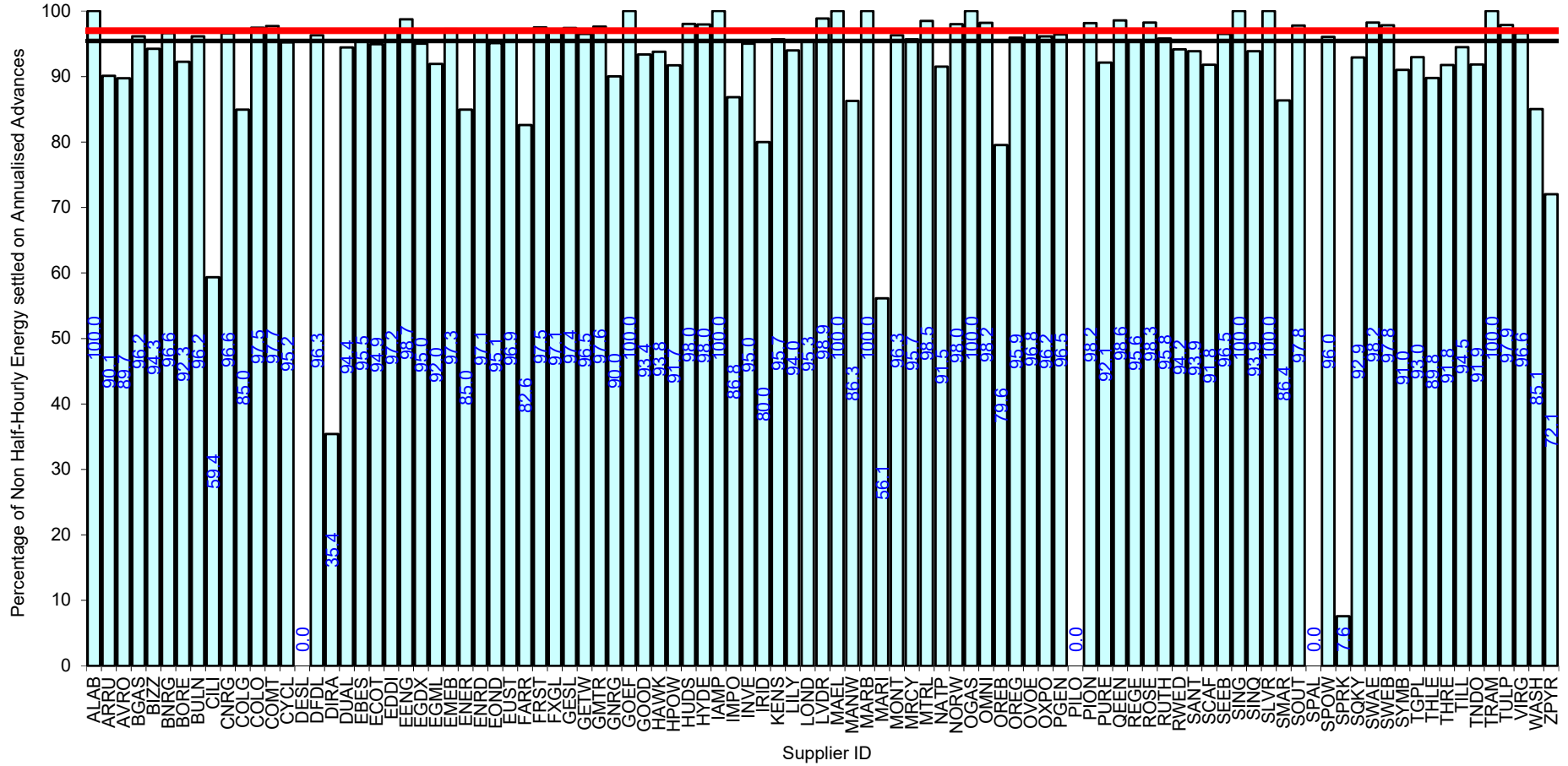


Serial SP08a. GSP Group: Southern (\_H). Reporting Period 1 to 30 November 2022 . Reconciliation Run: RF

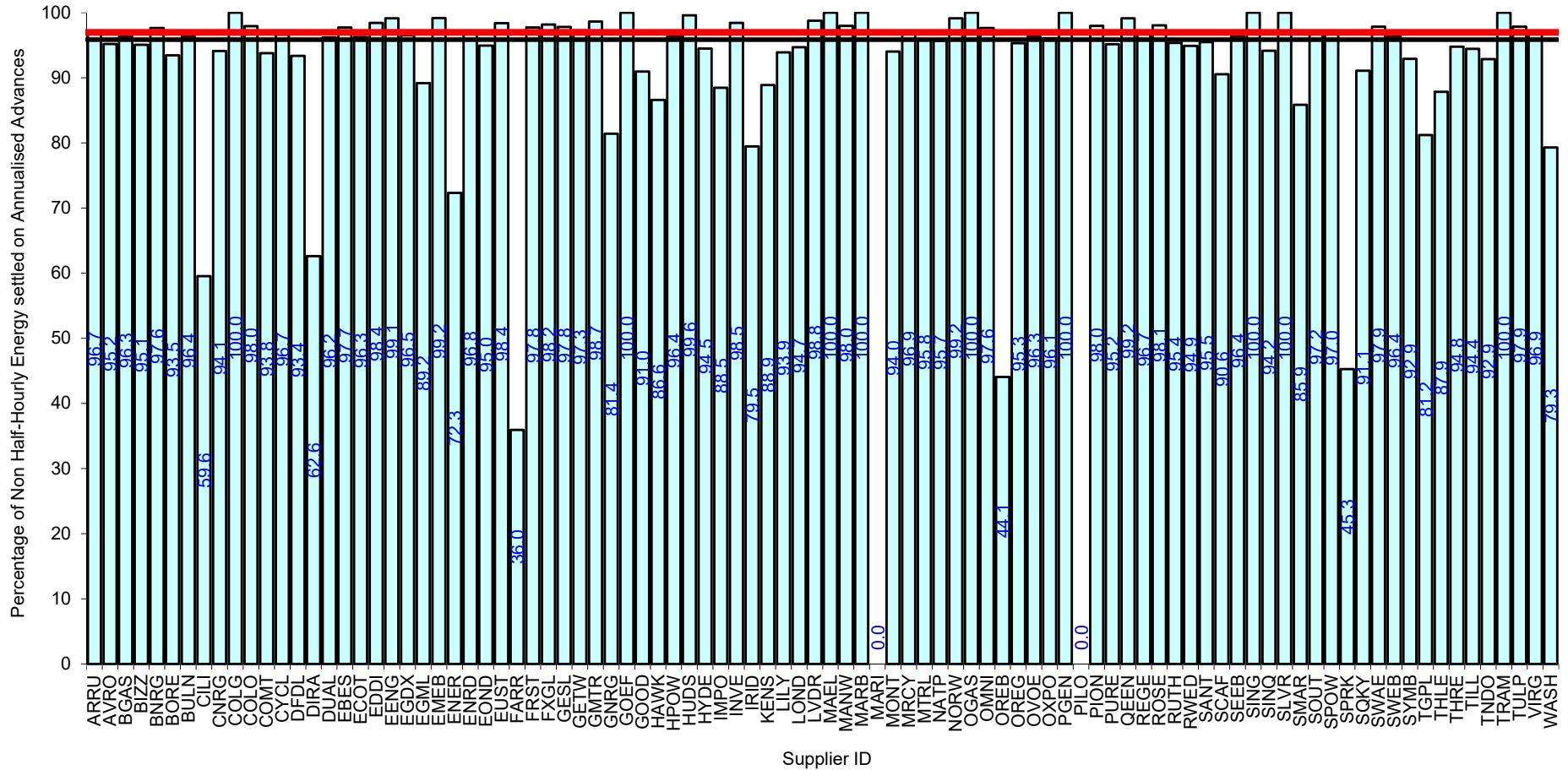


█ Supplier Performance    
 — GSP Group Average (95.89%)    
 — Industry Standard (97%)

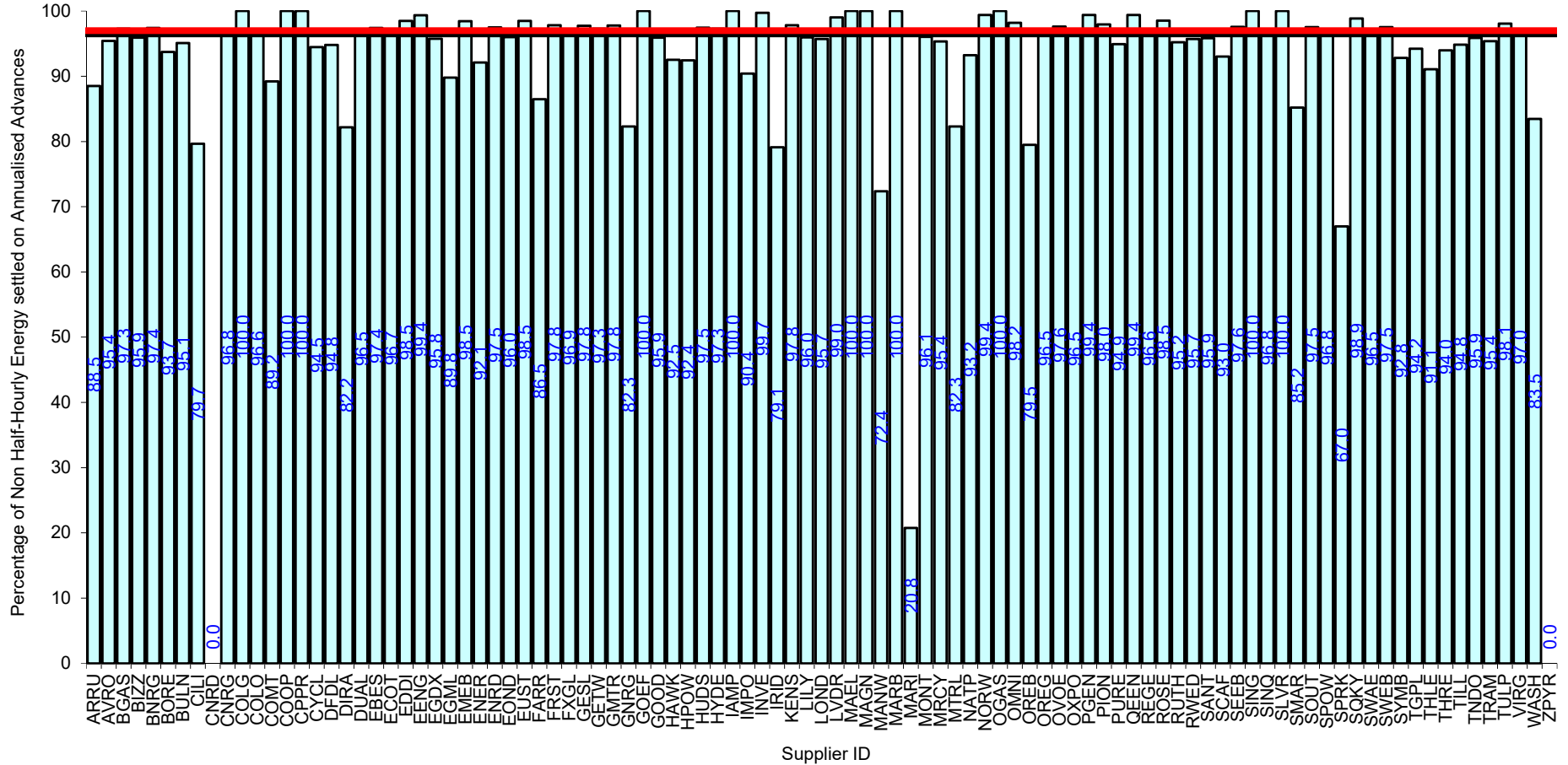


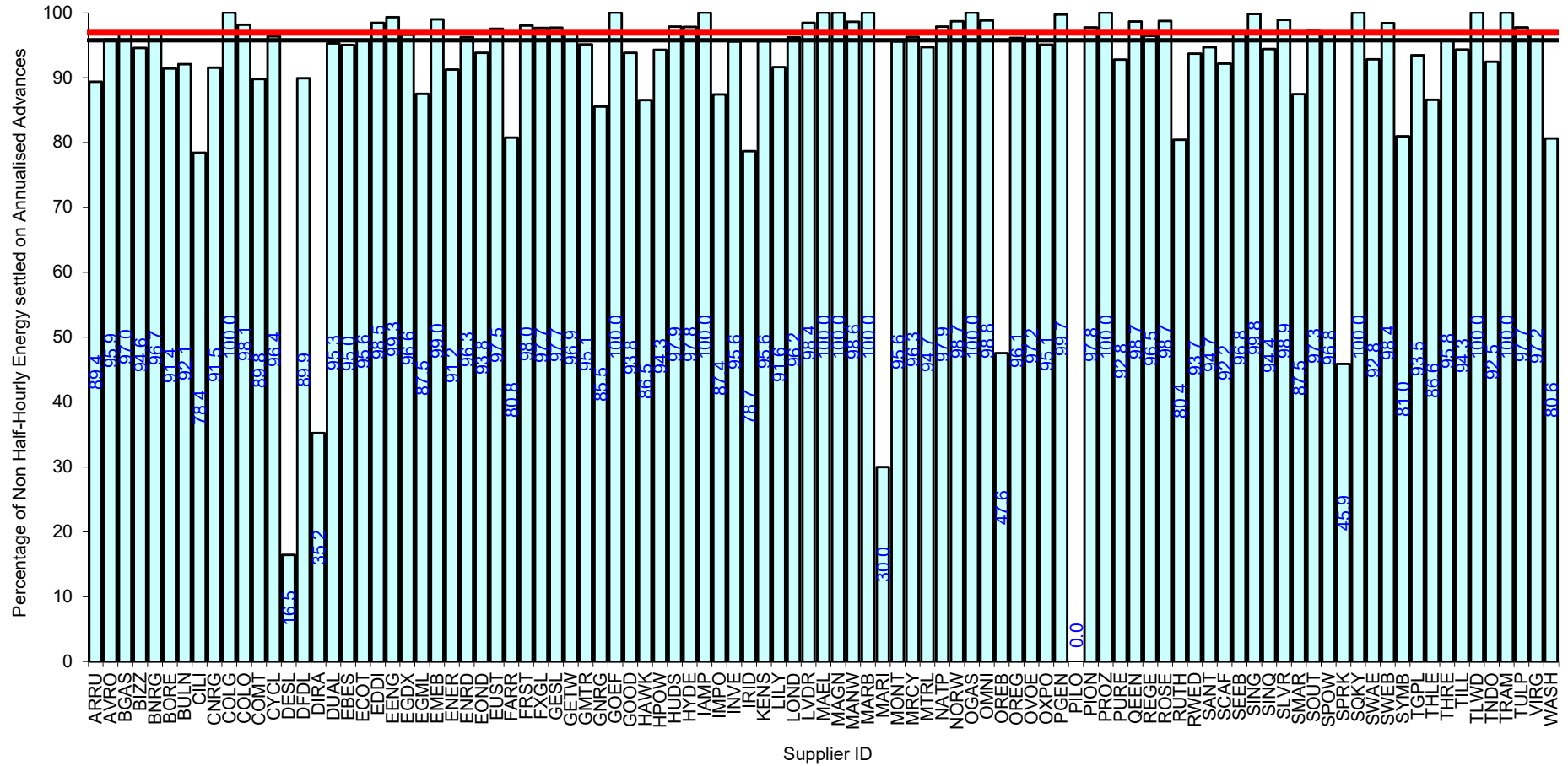


Serial SP08a. GSP Group: South Wales (\_K). Reporting Period 1 to 30 November 2022 . Reconciliation Run: RF



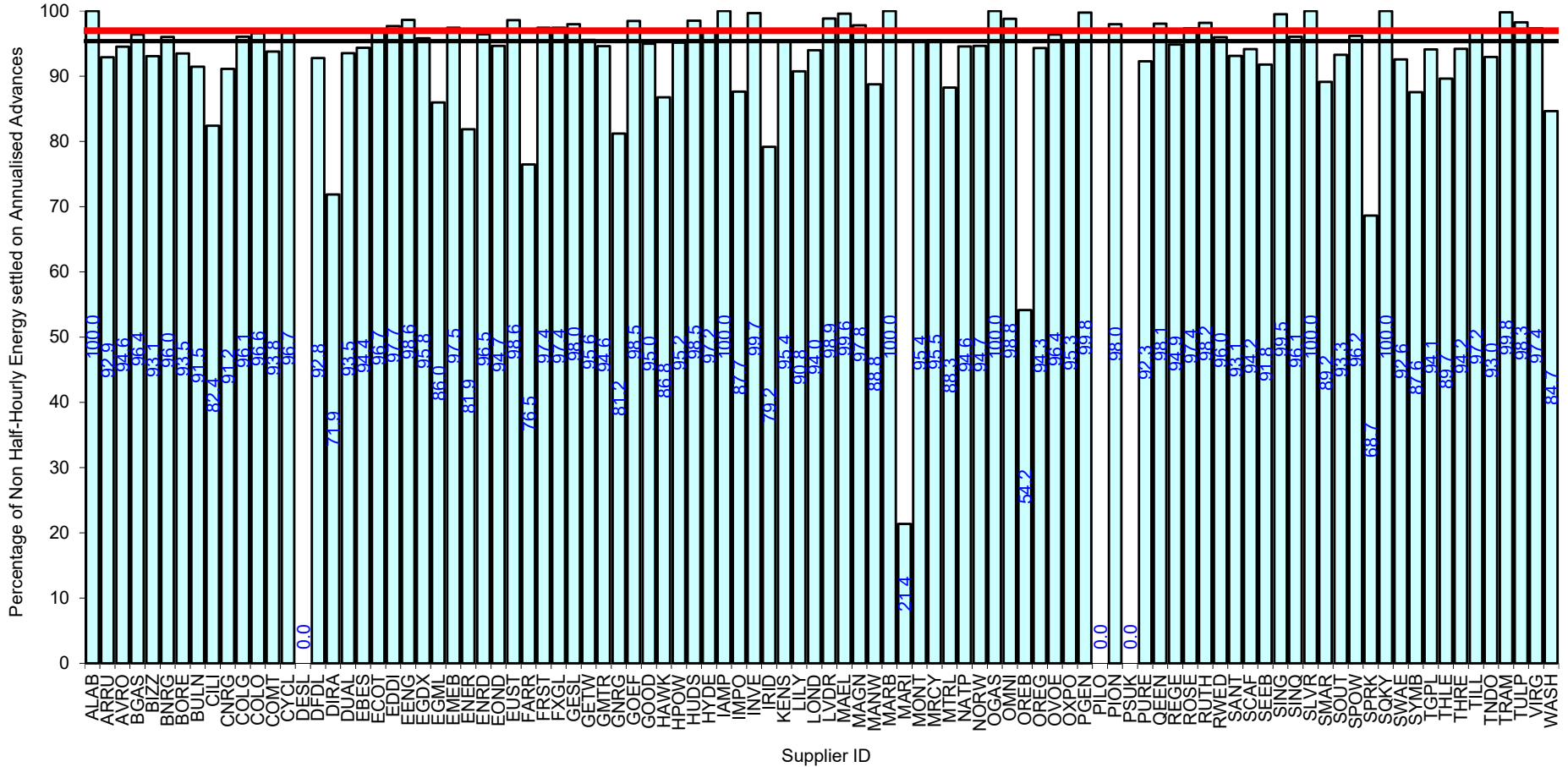
█ Supplier Performance    
 — GSP Group Average (95.88%)    
 — Industry Standard (97%)





Supplier Performance
  GSP Group Average (95.76%)
  Industry Standard (97%)

Serial SP08a. GSP Group: South Scotland (\_N). Reporting Period 1 to 30 November 2022 . Reconciliation Run: RF



█ Supplier Performance    
 — GSP Group Average (95.4%)    
 — Industry Standard (97%)

