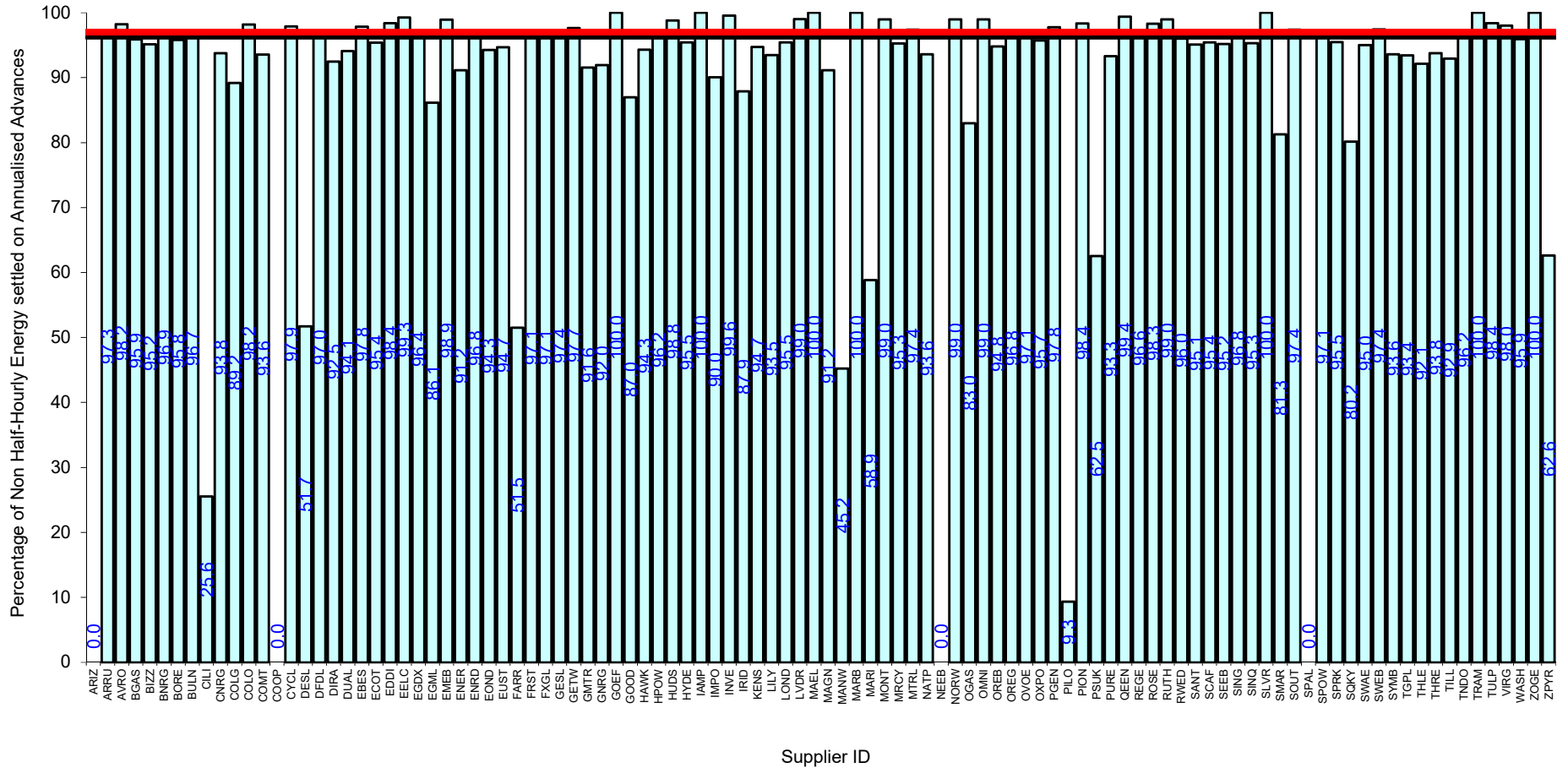
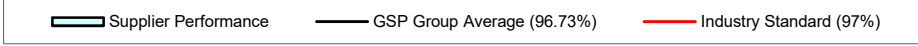
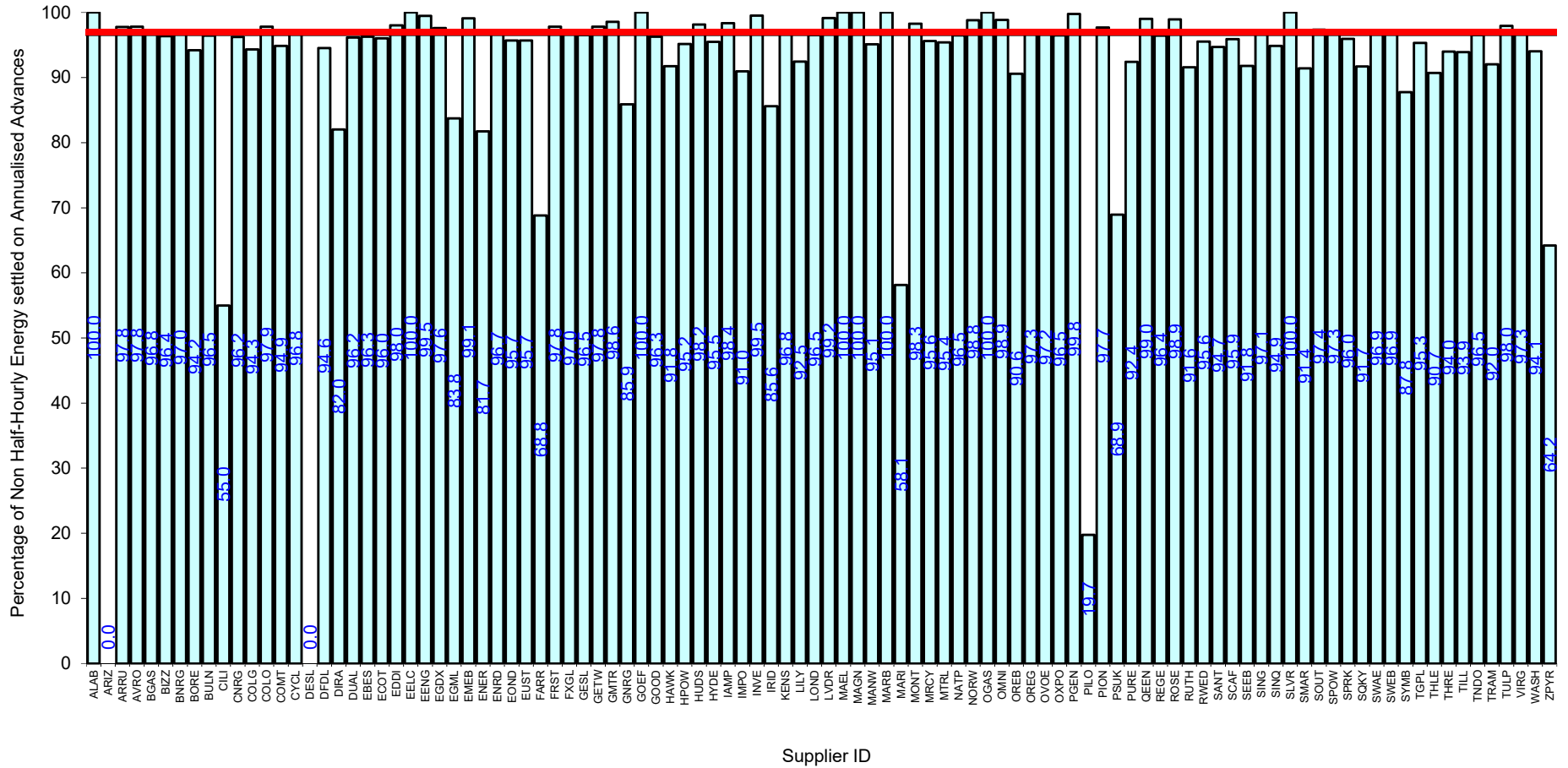
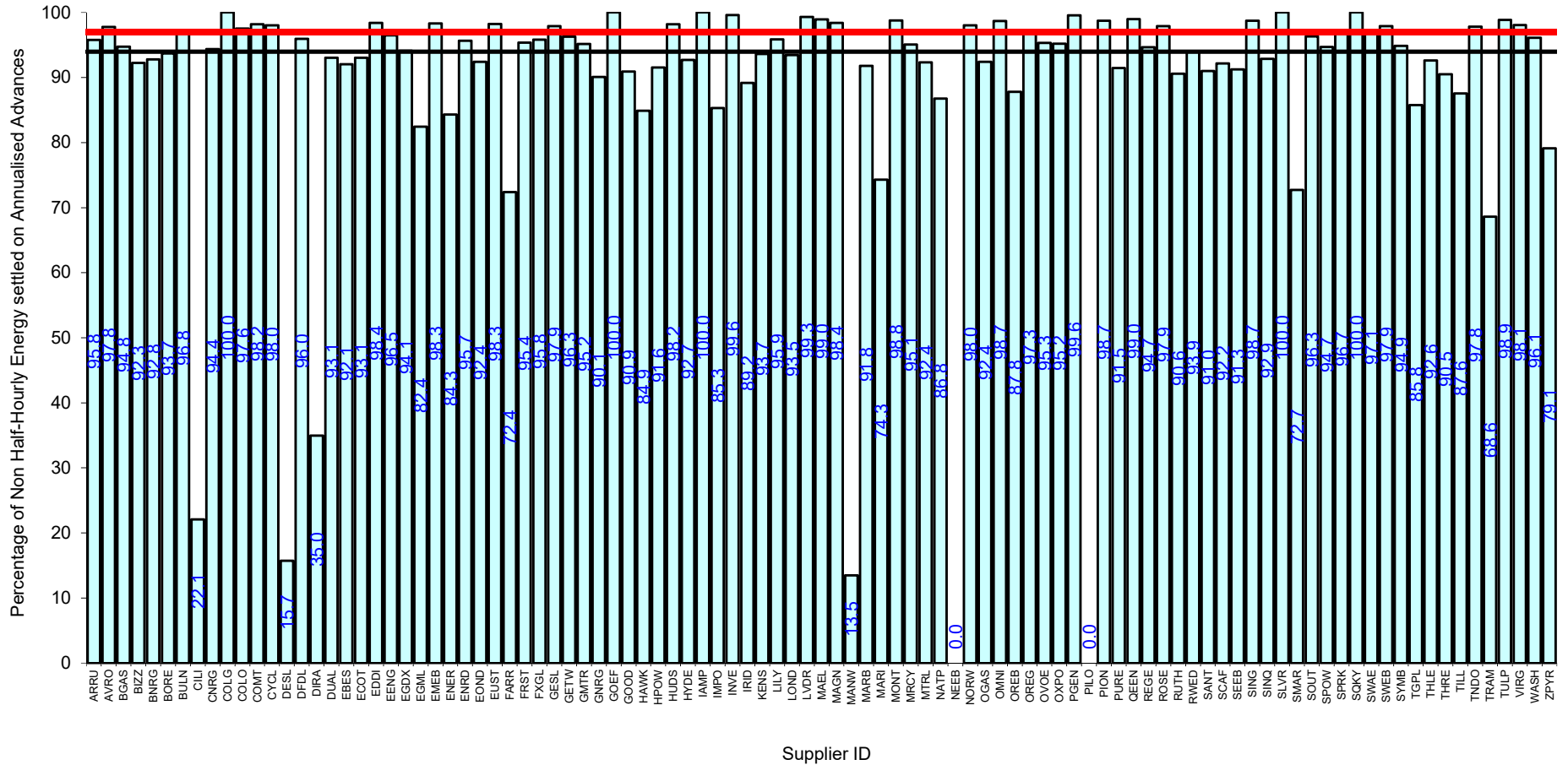


Serial SP08a. GSP Group: Eastern (_A). Reporting Period 1 to 30 September 2022 . Reconciliation Run: RF



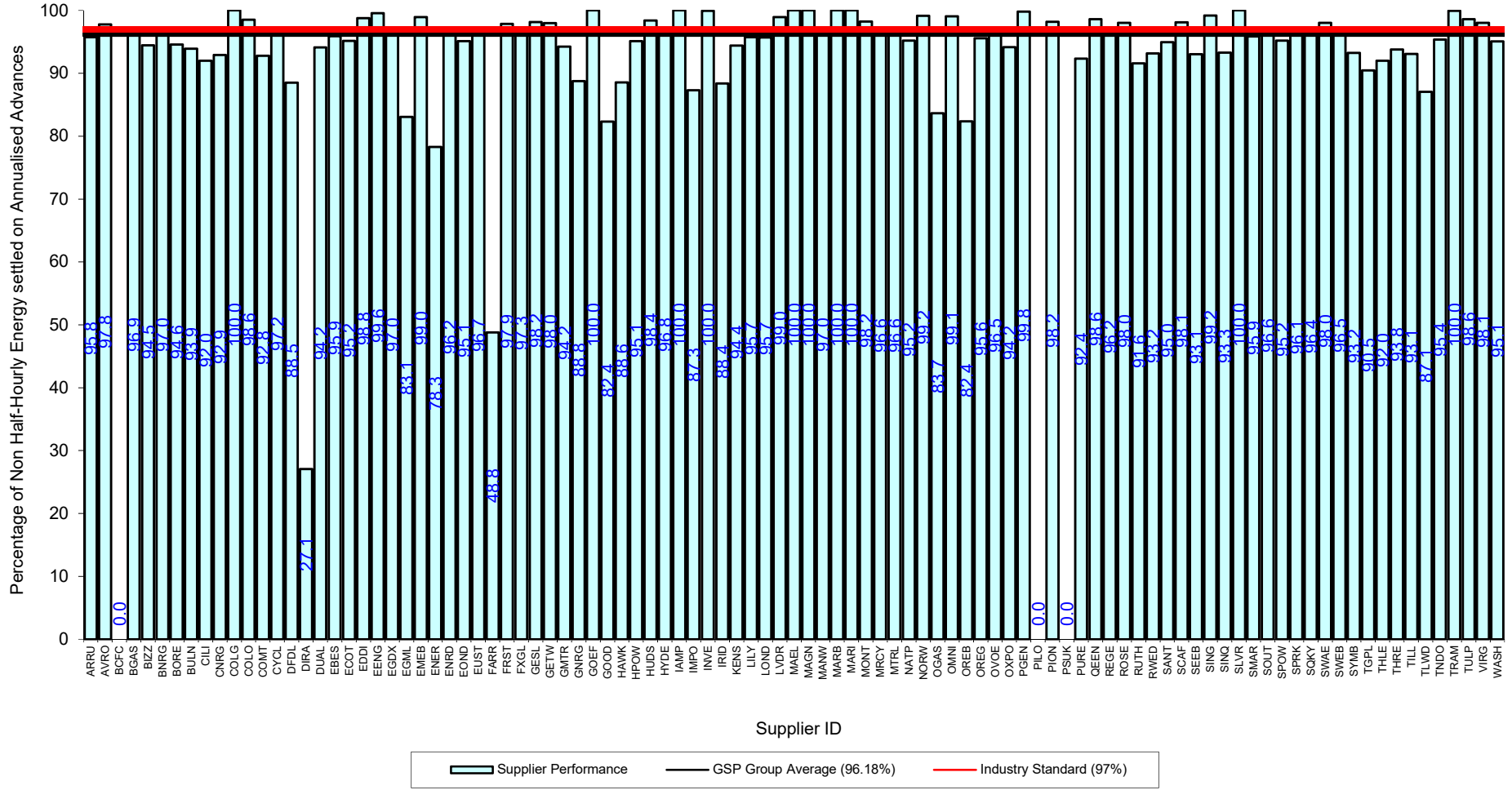


Serial SP08a. GSP Group: London (_C). Reporting Period 1 to 30 September 2022 . Reconciliation Run: RF

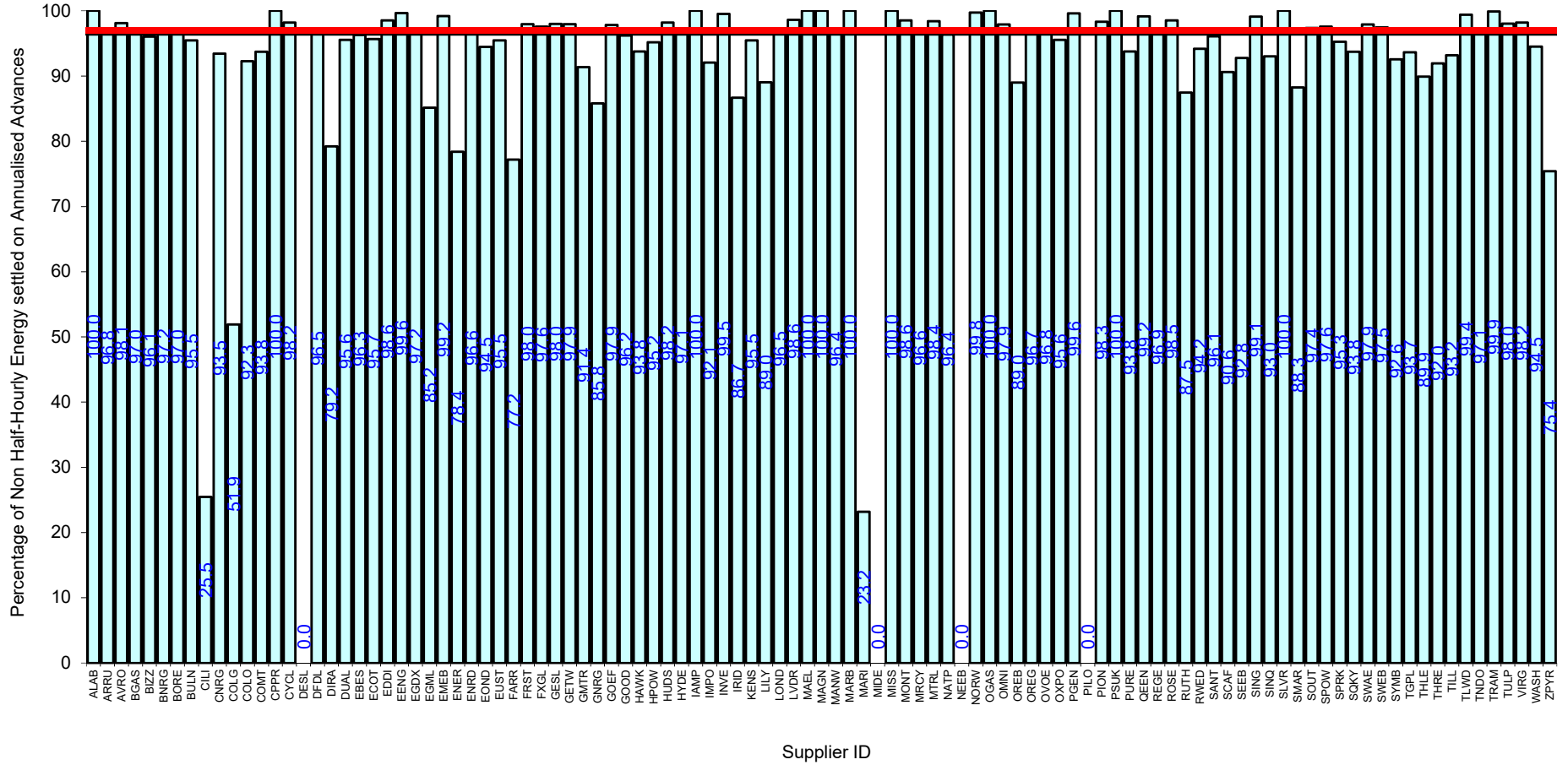


Supplier Performance
 GSP Group Average (93.98%)
 Industry Standard (97%)

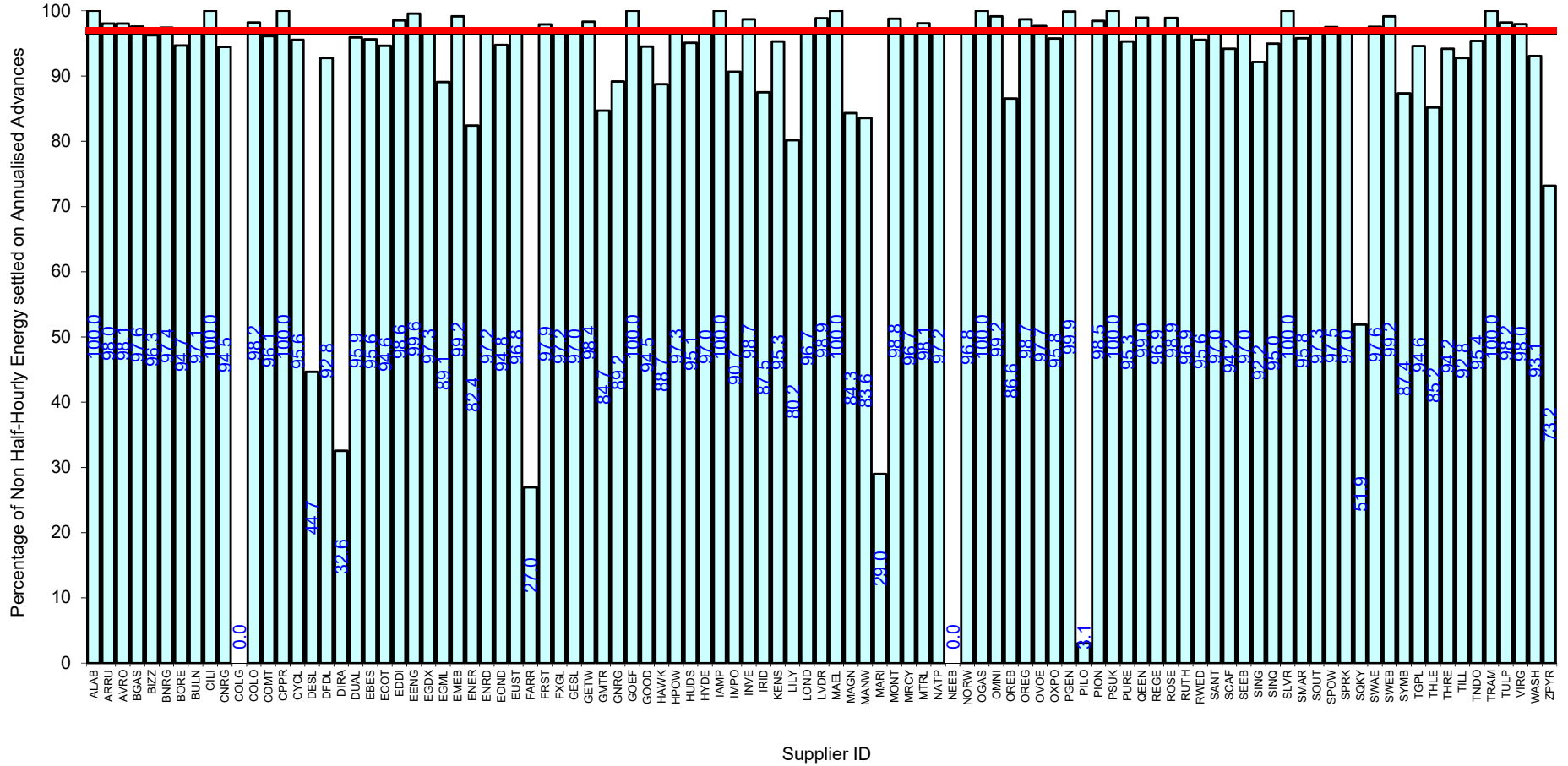
Serial SP08a. GSP Group: Merseyside and North Wales (_D). Reporting Period 1 to 30 September 2022 . Reconciliation Run: RF



Serial SP08a. GSP Group: Midlands (_E). Reporting Period 1 to 30 September 2022 . Reconciliation Run: RF

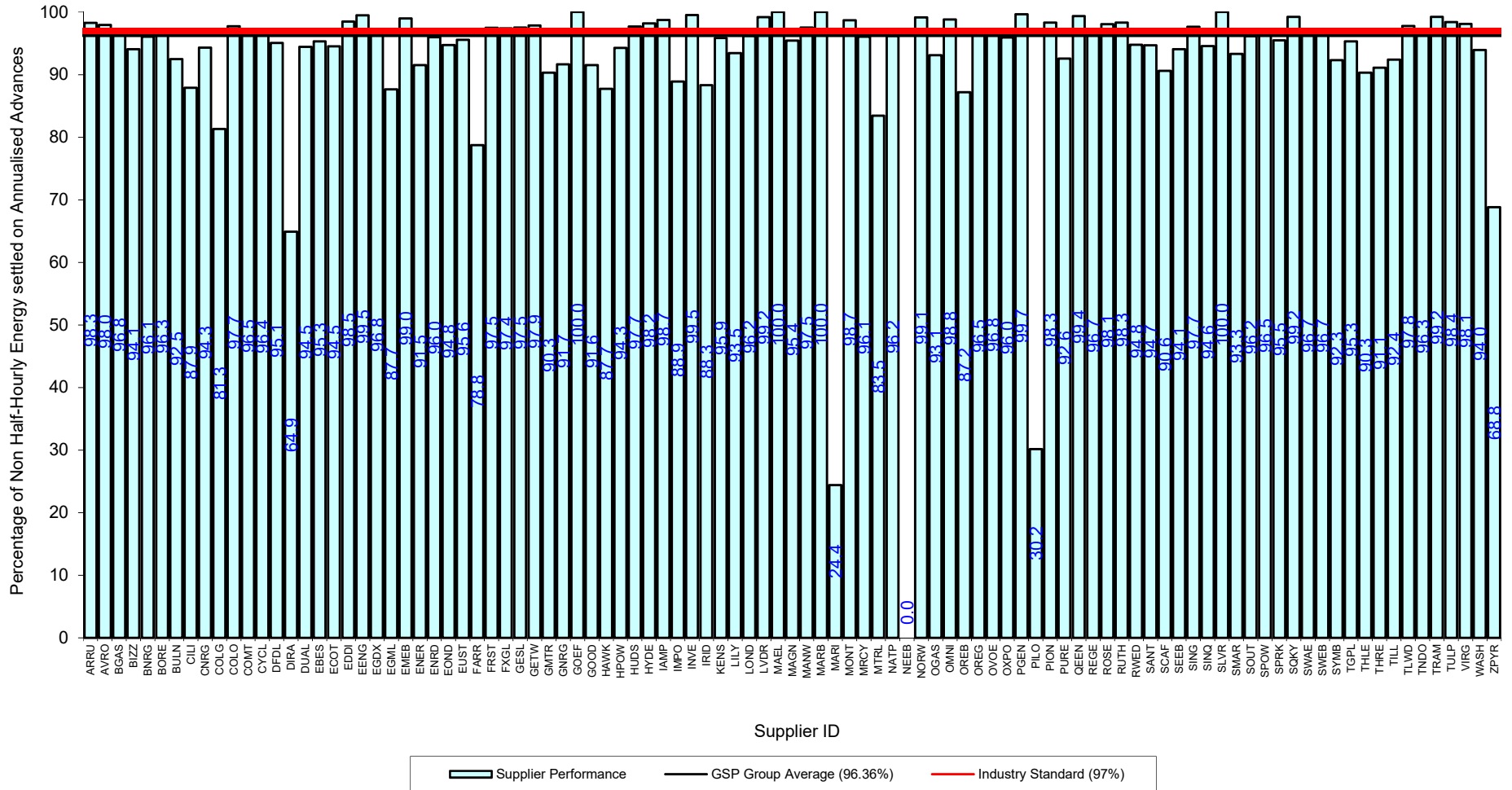


Serial SP08a. GSP Group: Northern (_F). Reporting Period 1 to 30 September 2022 . Reconciliation Run: RF

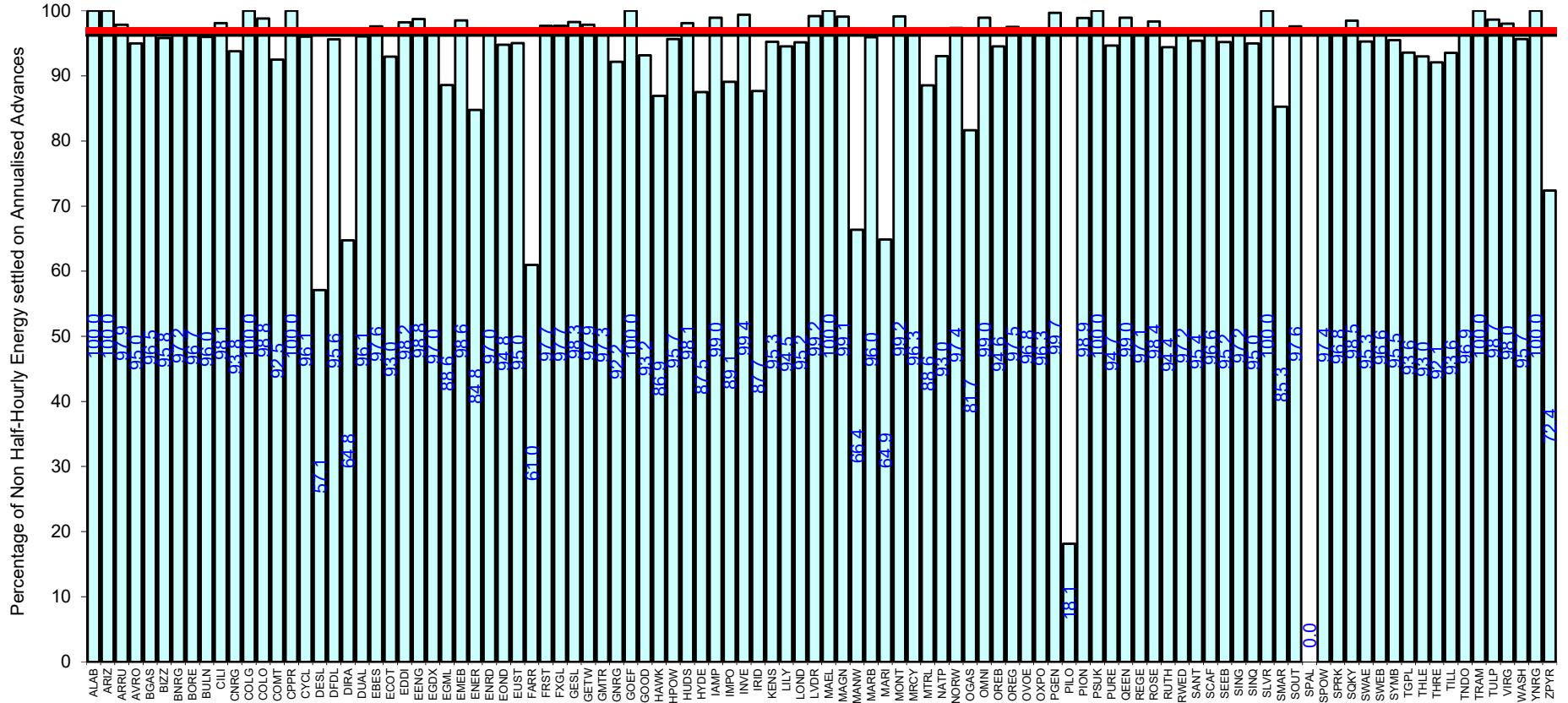


Supplier Performance
 GSP Group Average (96.65%)
 Industry Standard (97%)

Serial SP08a. GSP Group: North Western (_G). Reporting Period 1 to 30 September 2022 . Reconciliation Run: RF



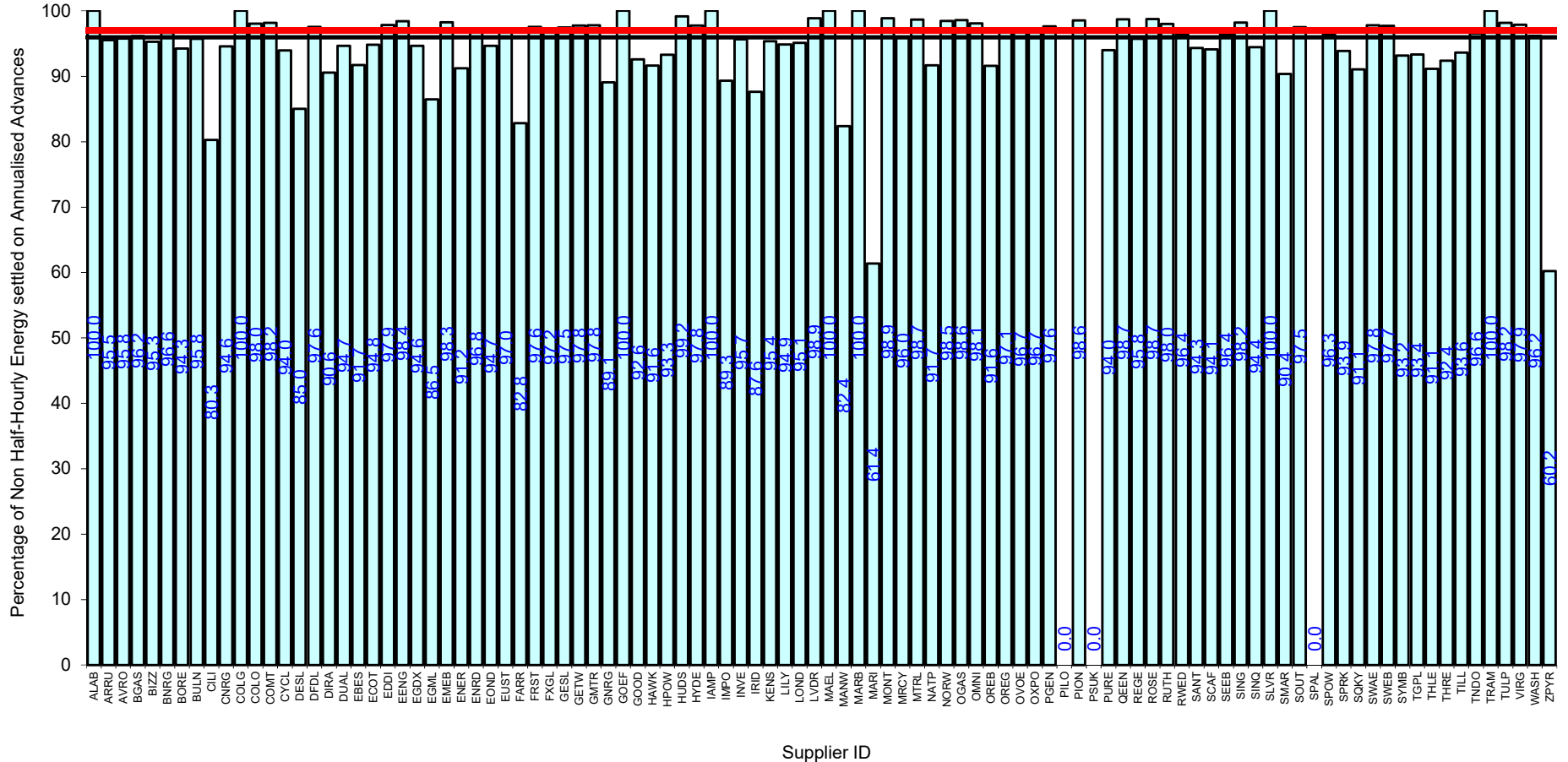
Serial SP08a. GSP Group: Southern (_H). Reporting Period 1 to 30 September 2022 . Reconciliation Run: RF



Supplier ID

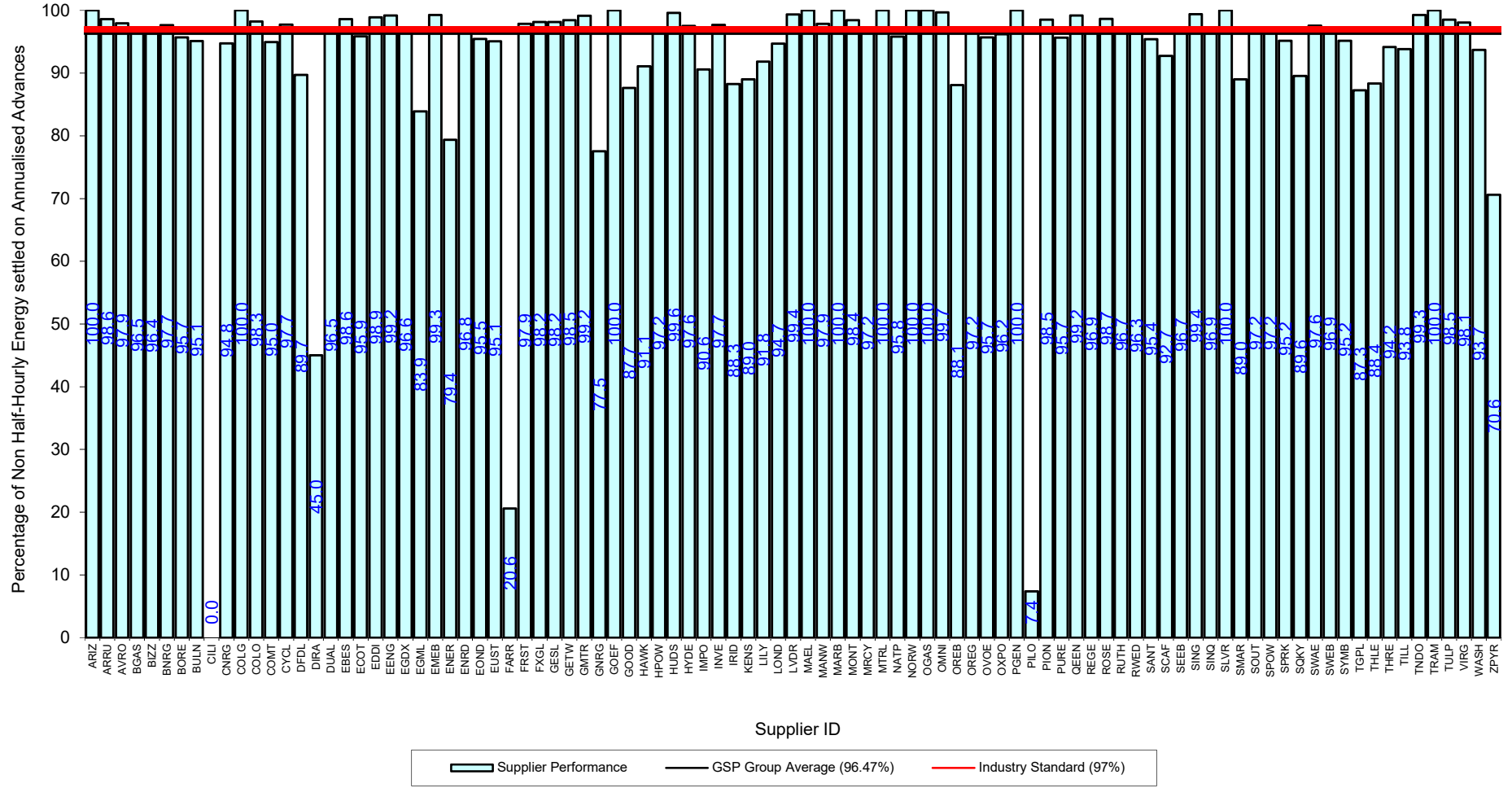


Serial SP08a. GSP Group: South Eastern (_J). Reporting Period 1 to 30 September 2022 . Reconciliation Run: RF

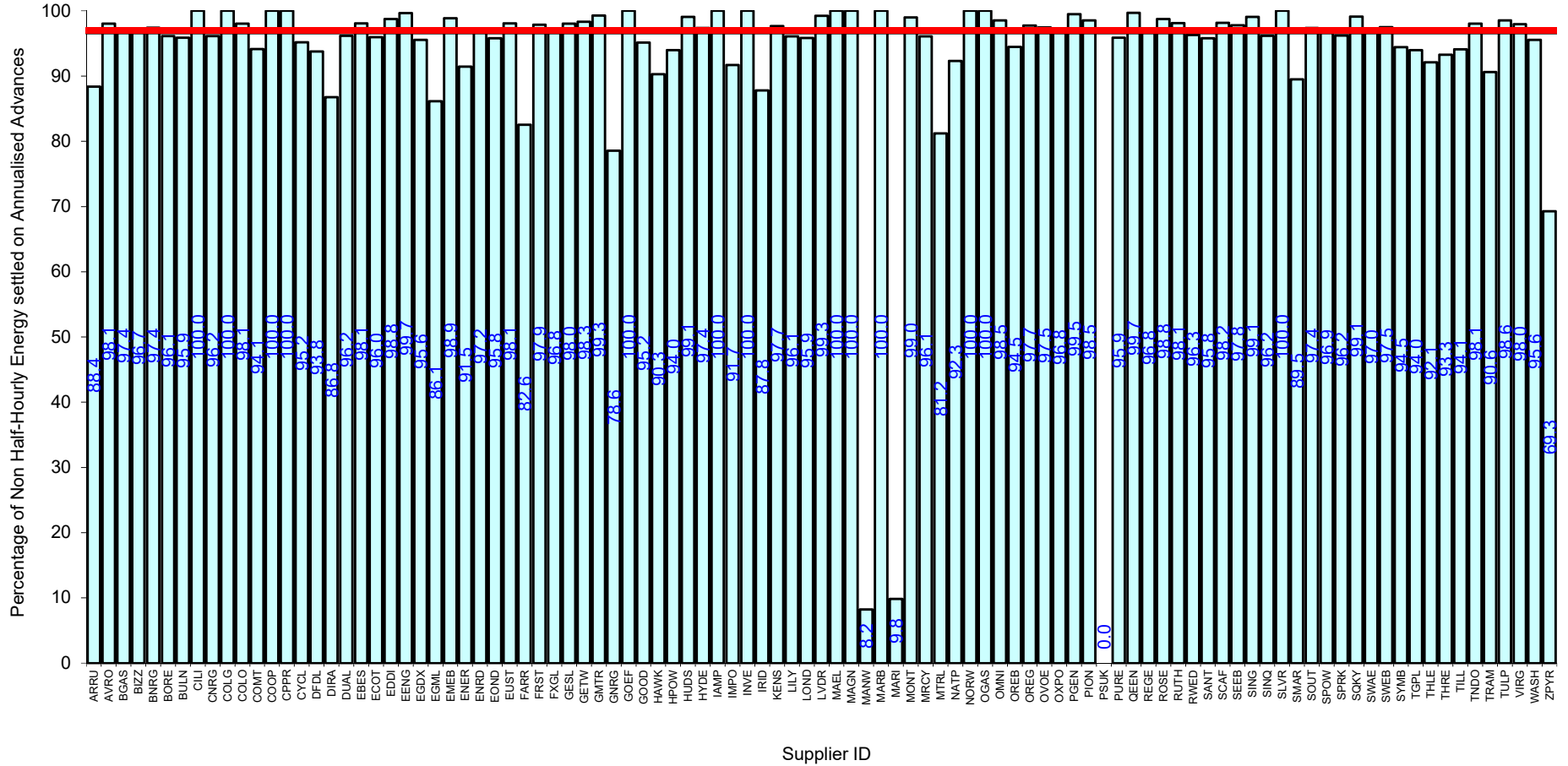


Supplier Performance
 GSP Group Average (95.96%)
 Industry Standard (97%)

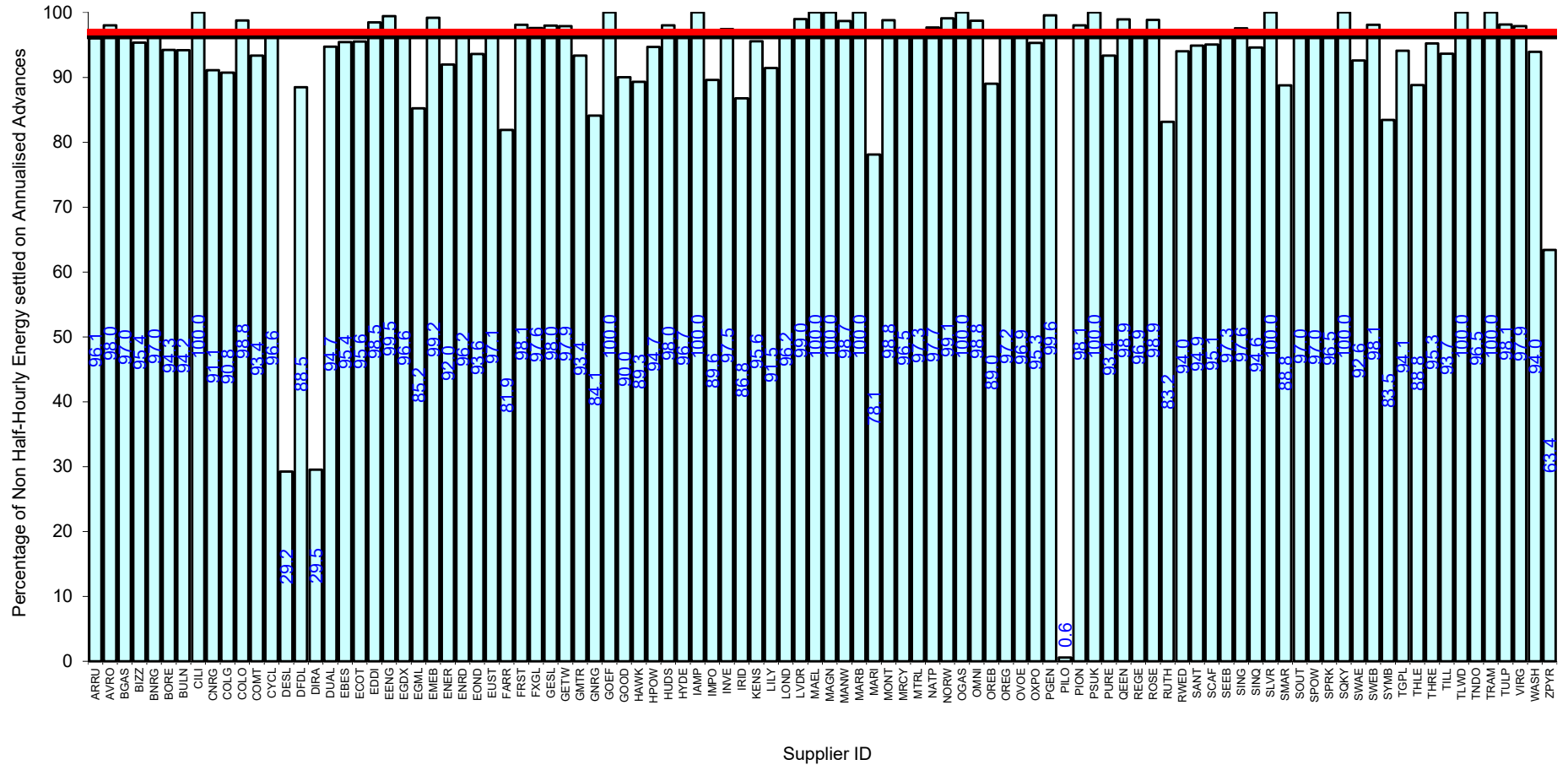
Serial SP08a. GSP Group: South Wales (_K). Reporting Period 1 to 30 September 2022 . Reconciliation Run: RF



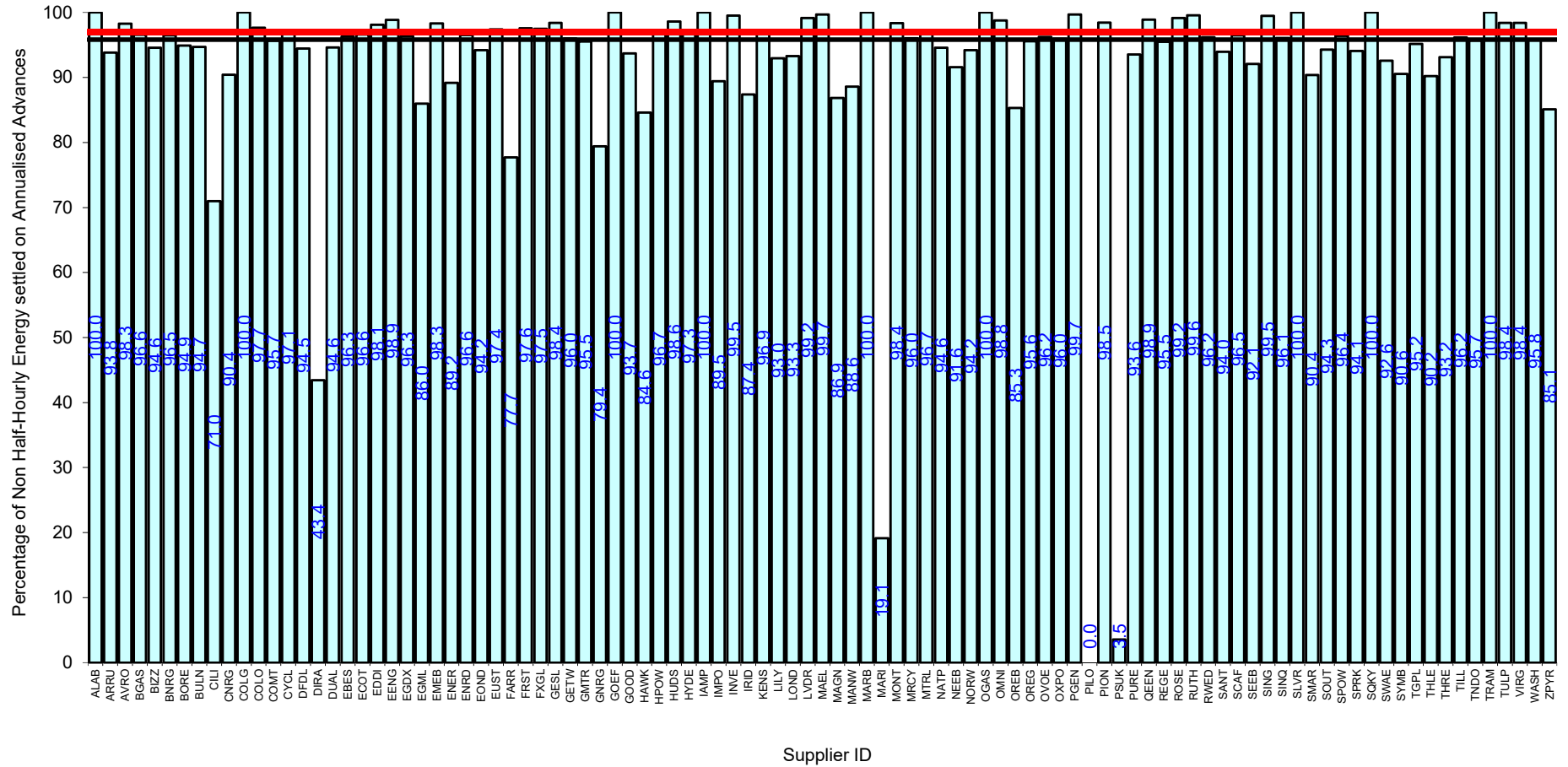
Serial SP08a. GSP Group: South Western (_L). Reporting Period 1 to 30 September 2022 . Reconciliation Run: RF



Supplier Performance
 GSP Group Average (96.77%)
 Industry Standard (97%)



Serial SP08a. GSP Group: South Scotland (_N). Reporting Period 1 to 30 September 2022 . Reconciliation Run: RF



Supplier Performance
 GSP Group Average (95.84%)
 Industry Standard (97%)

Serial SP08a. GSP Group: North Scotland (_P). Reporting Period 1 to 30 September 2022 . Reconciliation Run: RF

