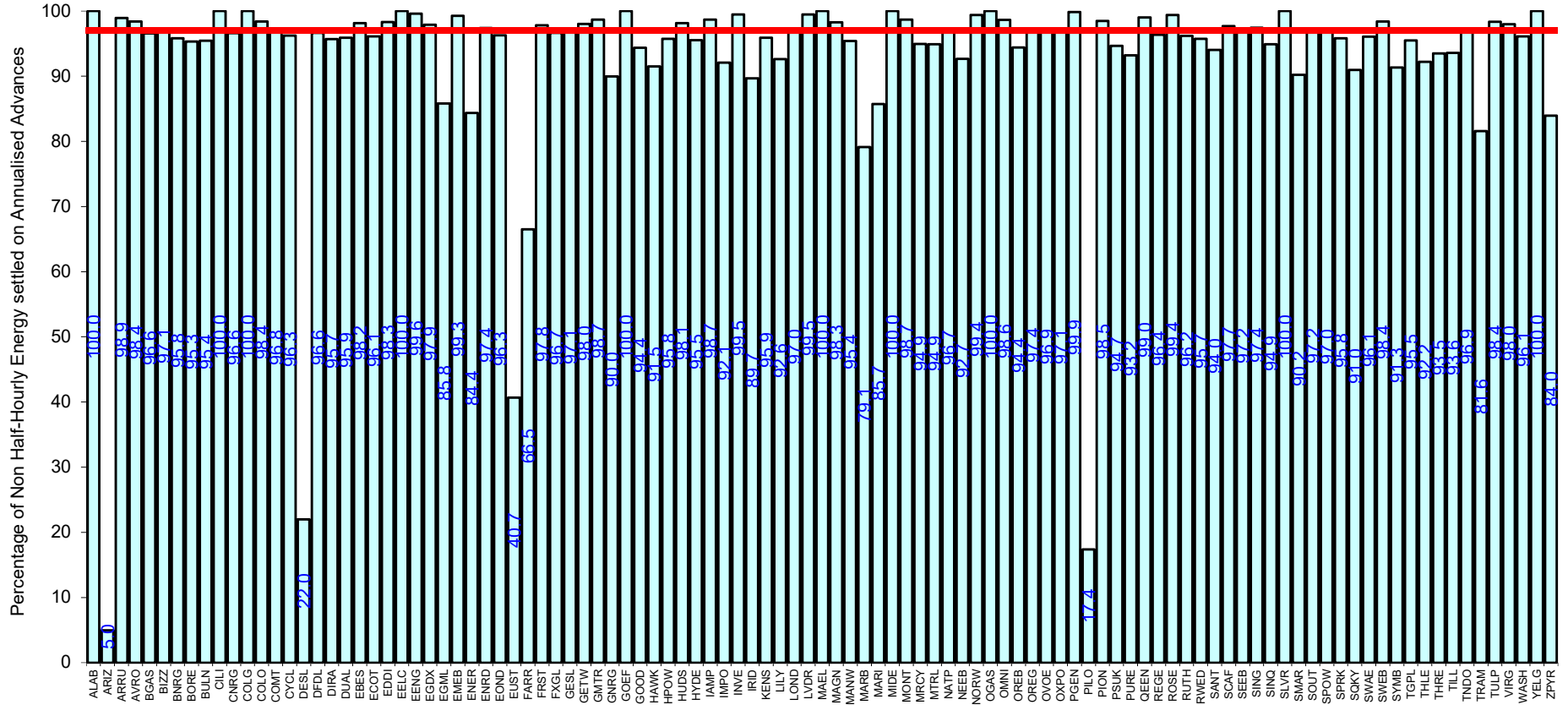


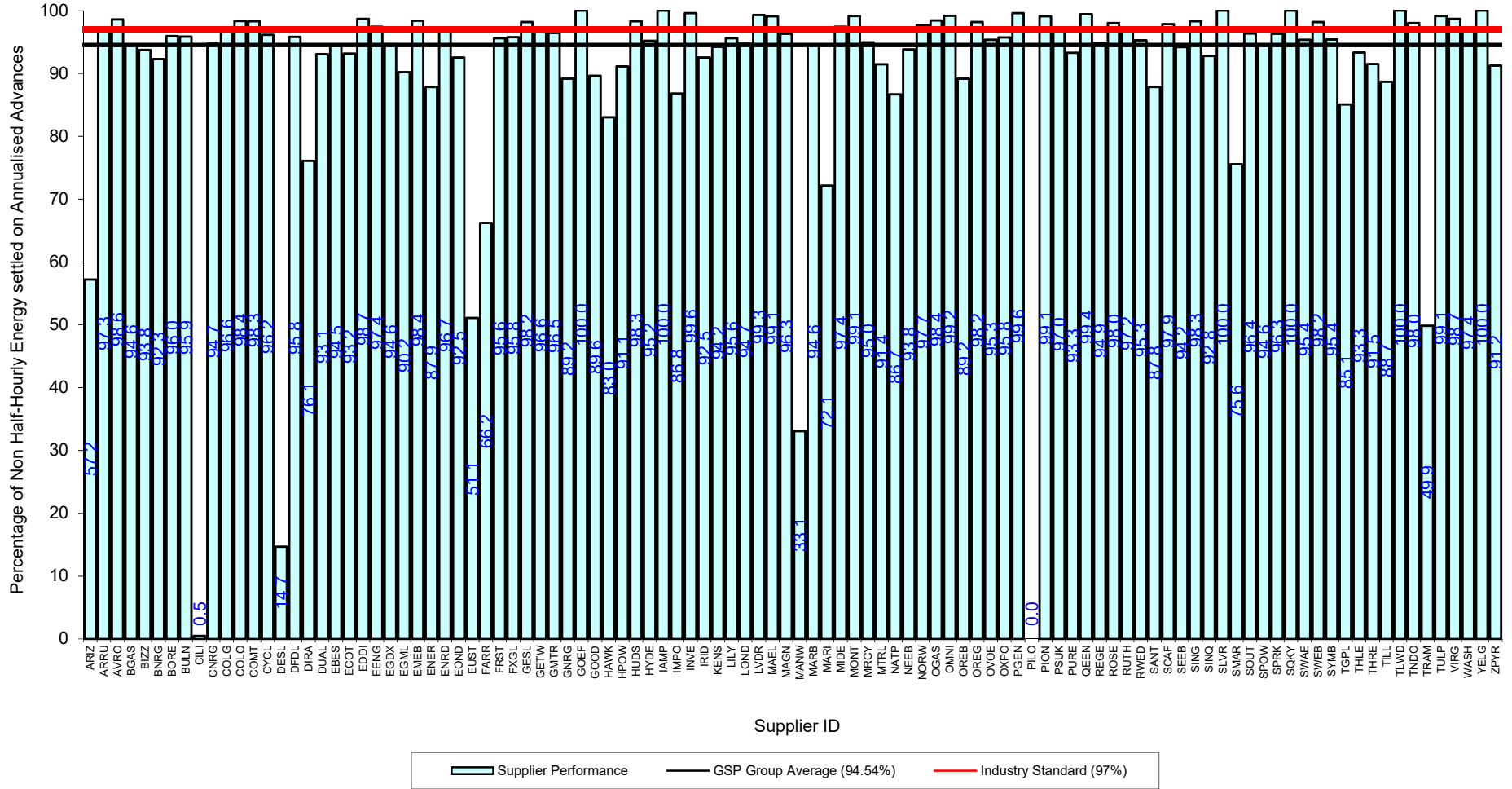
Serial SP08a. GSP Group: East Midlands (_B). Reporting Period 1 to 31 July 2022 . Reconciliation Run: RF



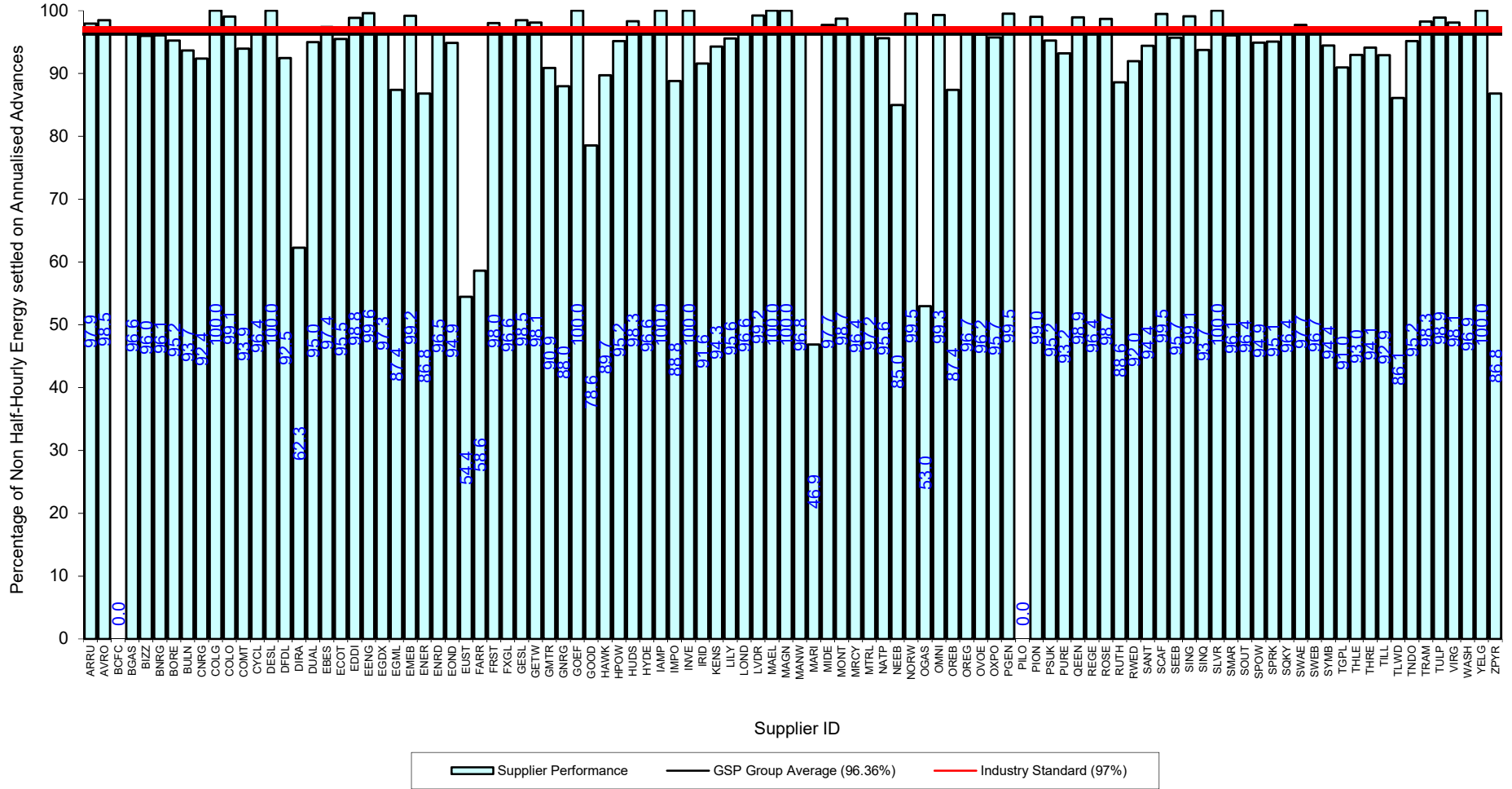
Supplier ID



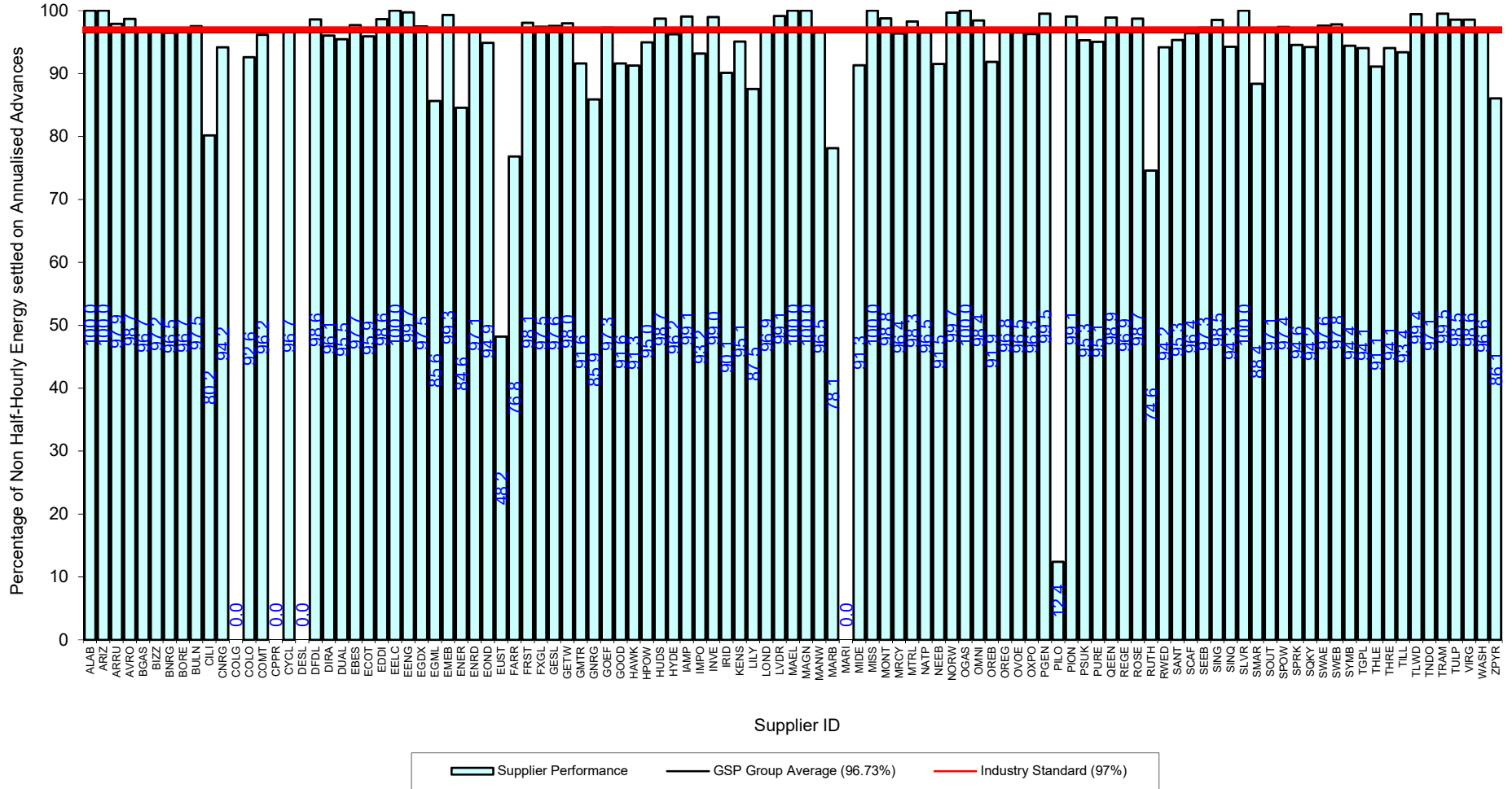
Serial SP08a. GSP Group: London (_C). Reporting Period 1 to 31 July 2022 . Reconciliation Run: RF



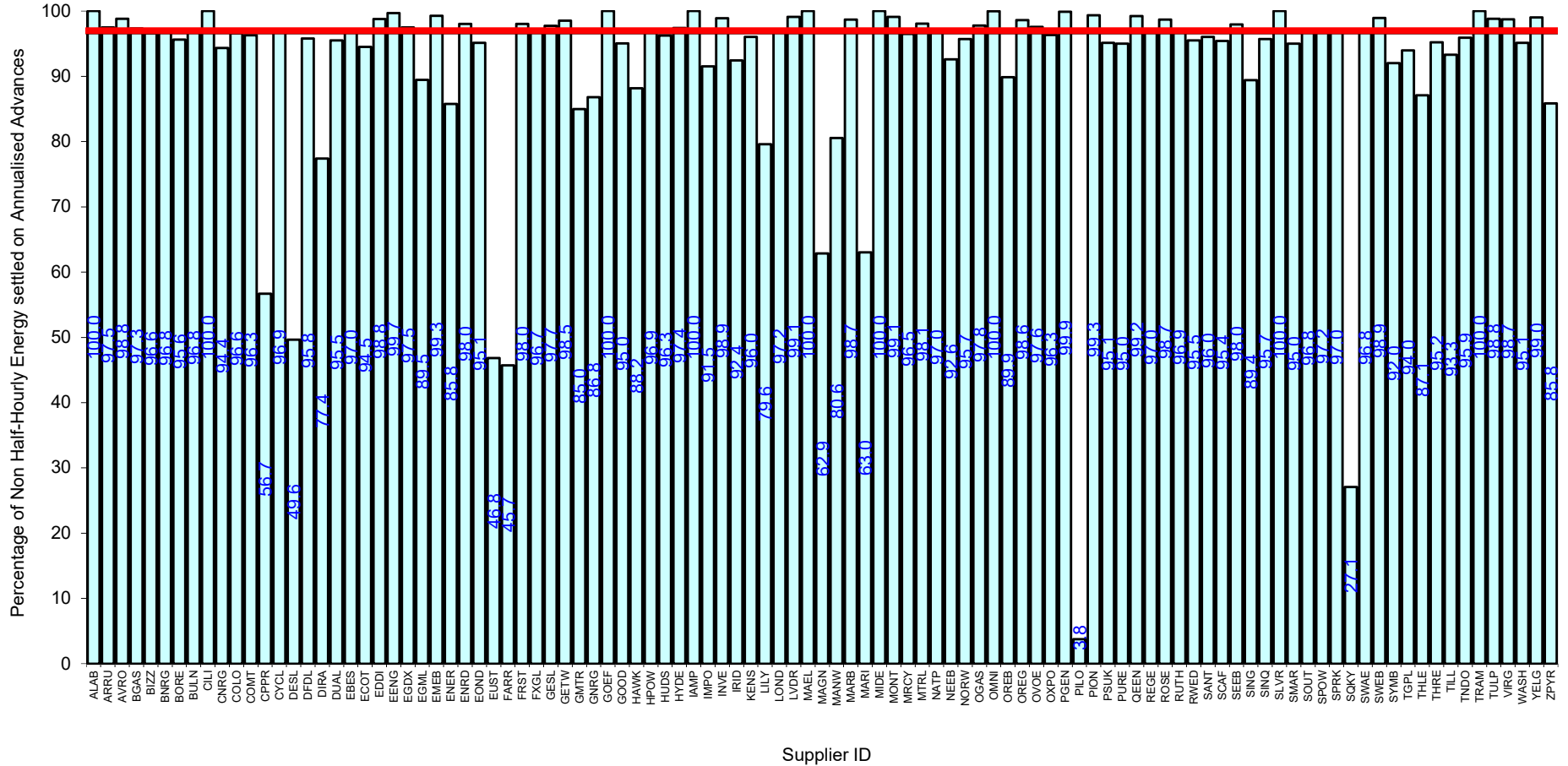
Serial SP08a. GSP Group: Merseyside and North Wales (_D). Reporting Period 1 to 31 July 2022 . Reconciliation Run: RF



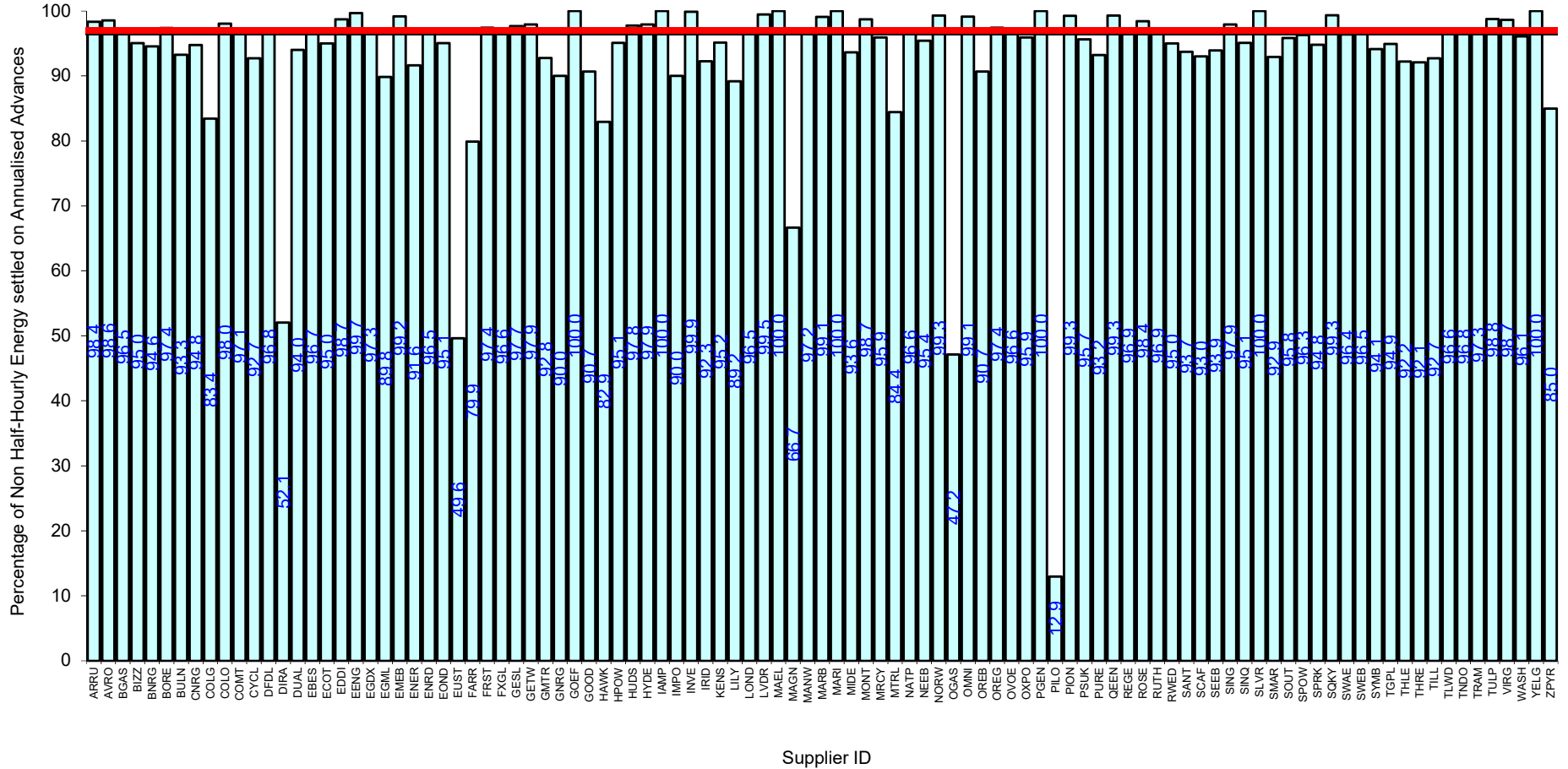
Serial SP08a. GSP Group: Midlands (_E). Reporting Period 1 to 31 July 2022 . Reconciliation Run: RF



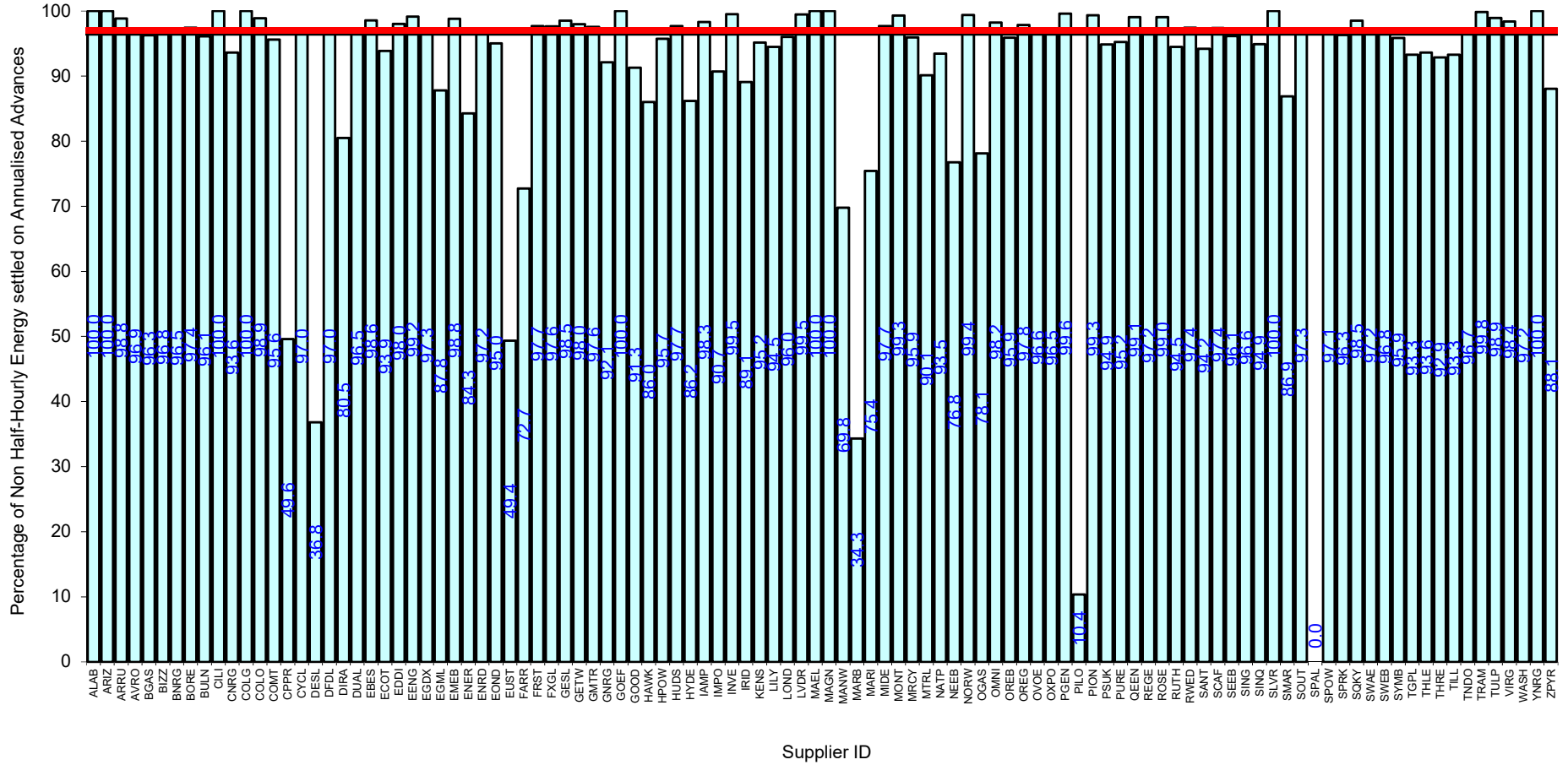
Serial SP08a. GSP Group: Northern (_F). Reporting Period 1 to 31 July 2022 . Reconciliation Run: RF



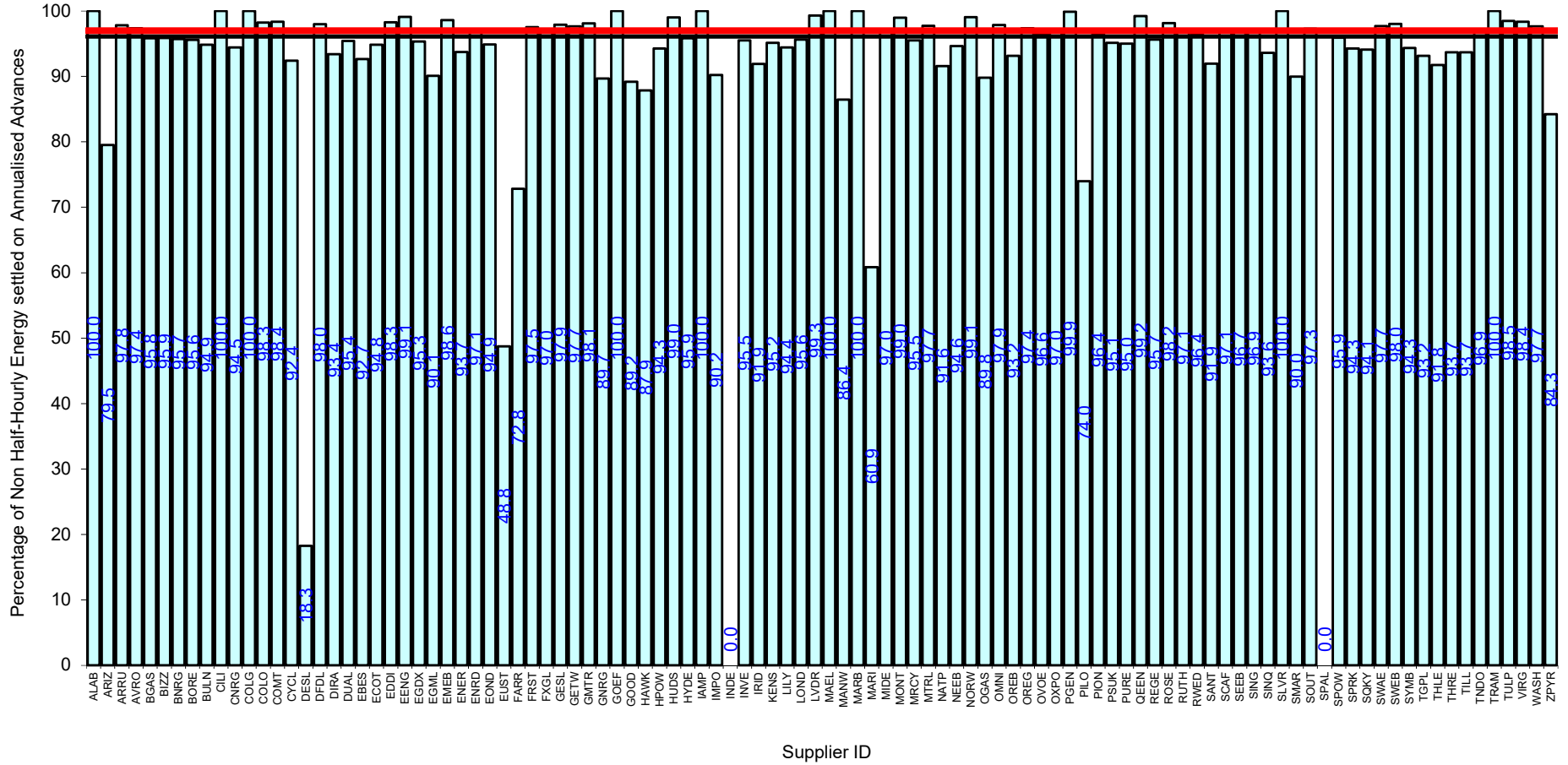
Serial SP08a. GSP Group: North Western (_G). Reporting Period 1 to 31 July 2022 . Reconciliation Run: RF



Serial SP08a. GSP Group: Southern (_H). Reporting Period 1 to 31 July 2022 . Reconciliation Run: RF

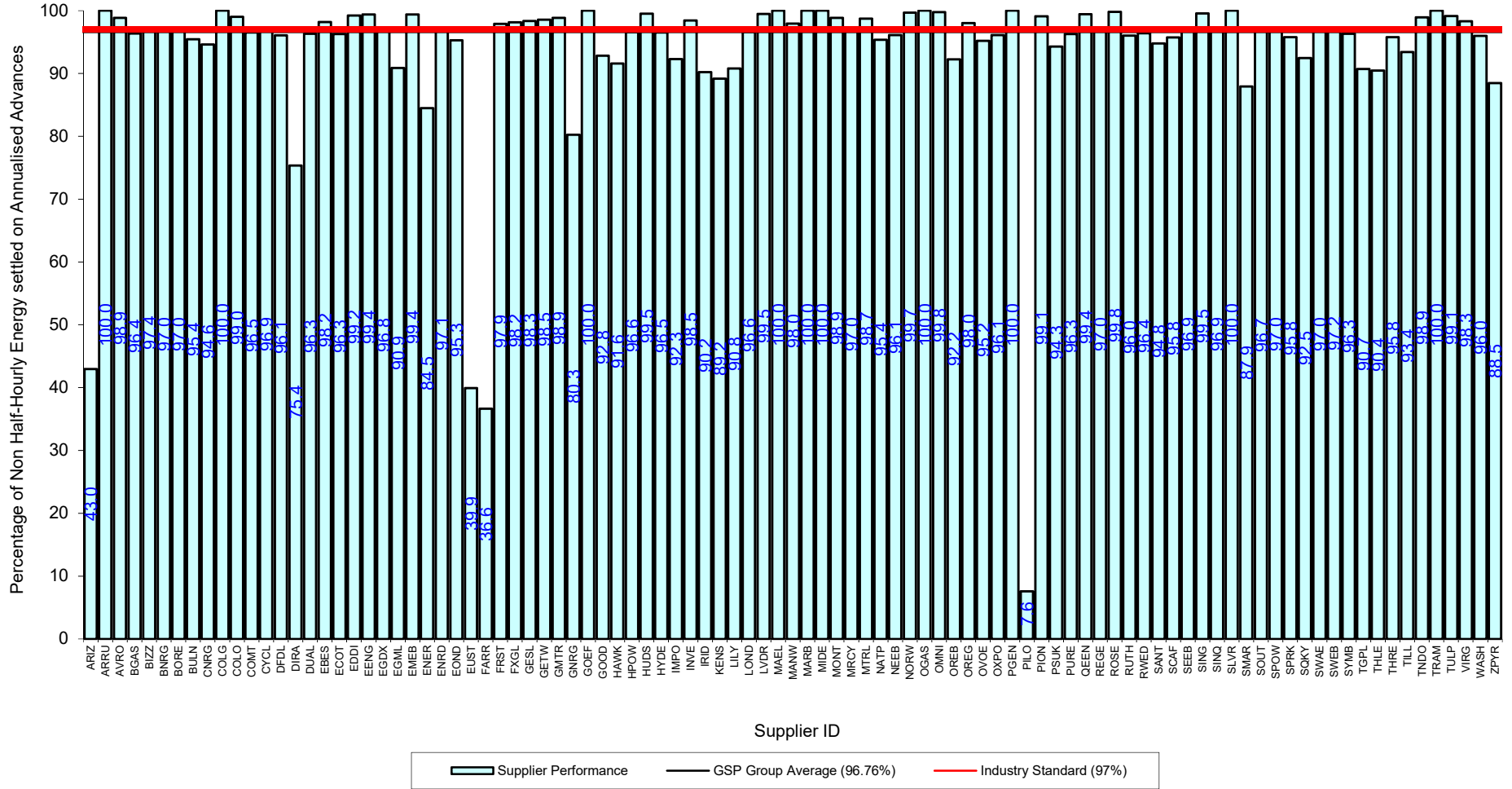


Serial SP08a. GSP Group: South Eastern (_J). Reporting Period 1 to 31 July 2022 . Reconciliation Run: RF

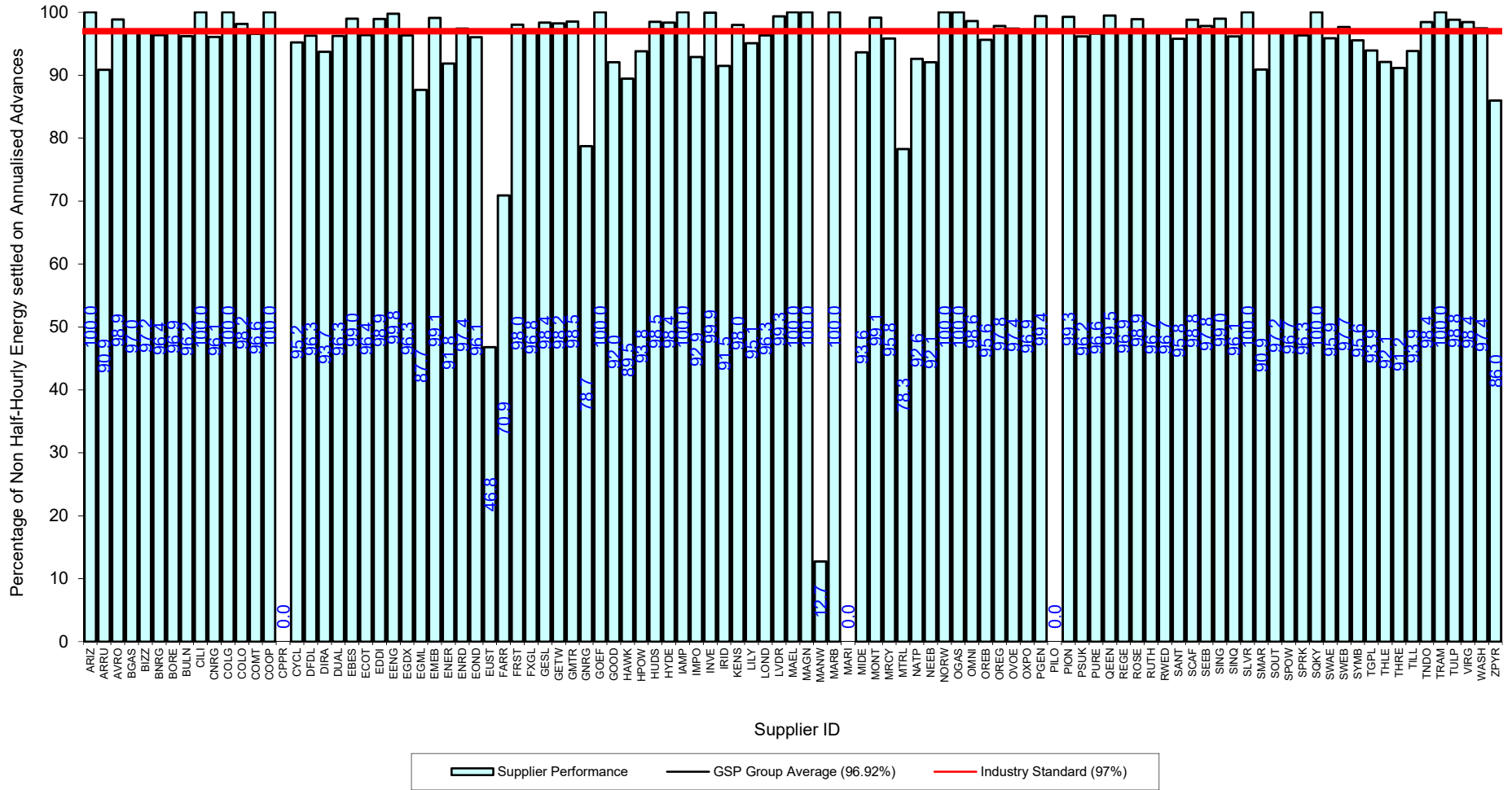


Supplier Performance
 GSP Group Average (96.1%)
 Industry Standard (97%)

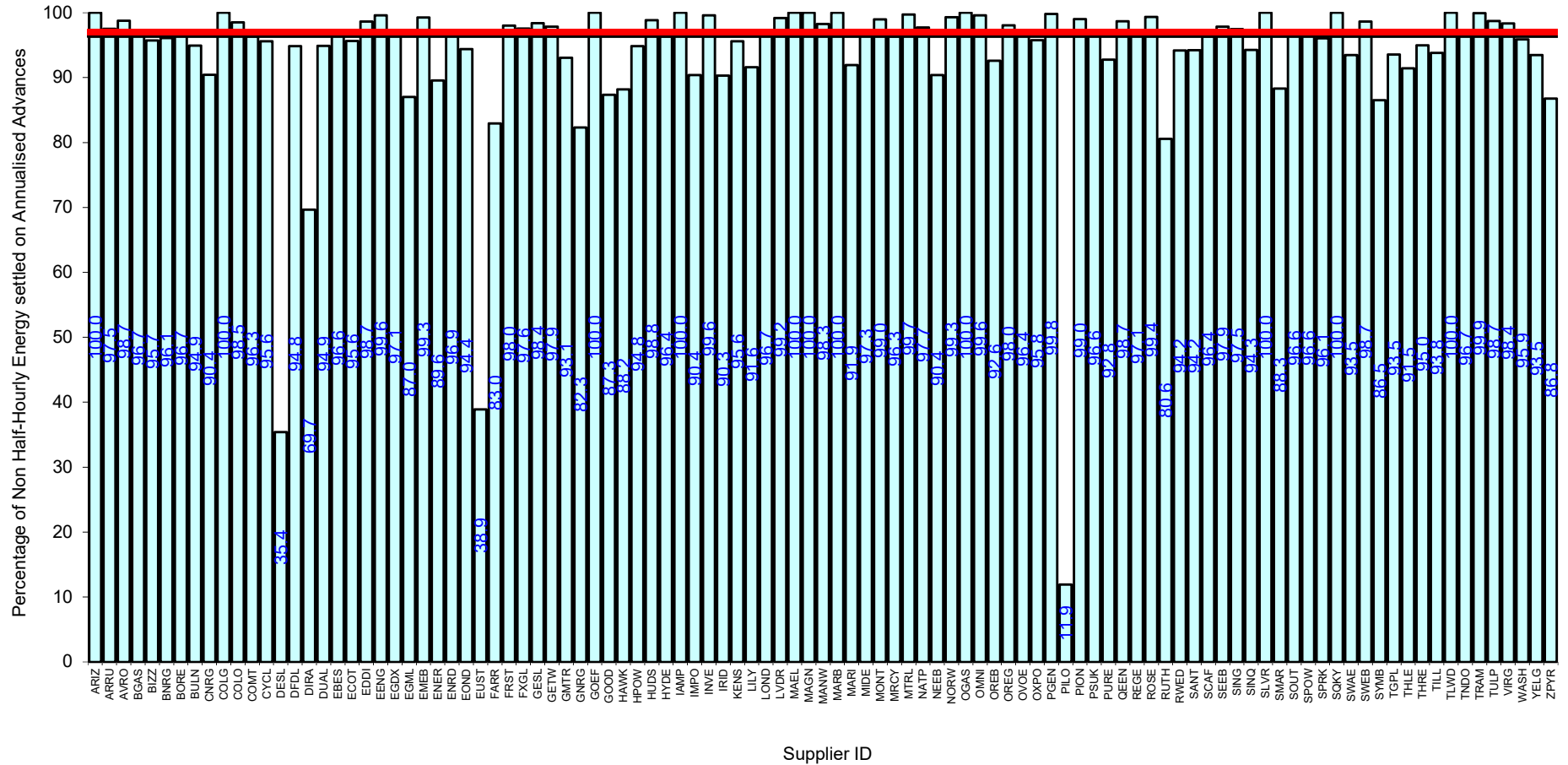
Serial SP08a. GSP Group: South Wales (_K). Reporting Period 1 to 31 July 2022 . Reconciliation Run: RF



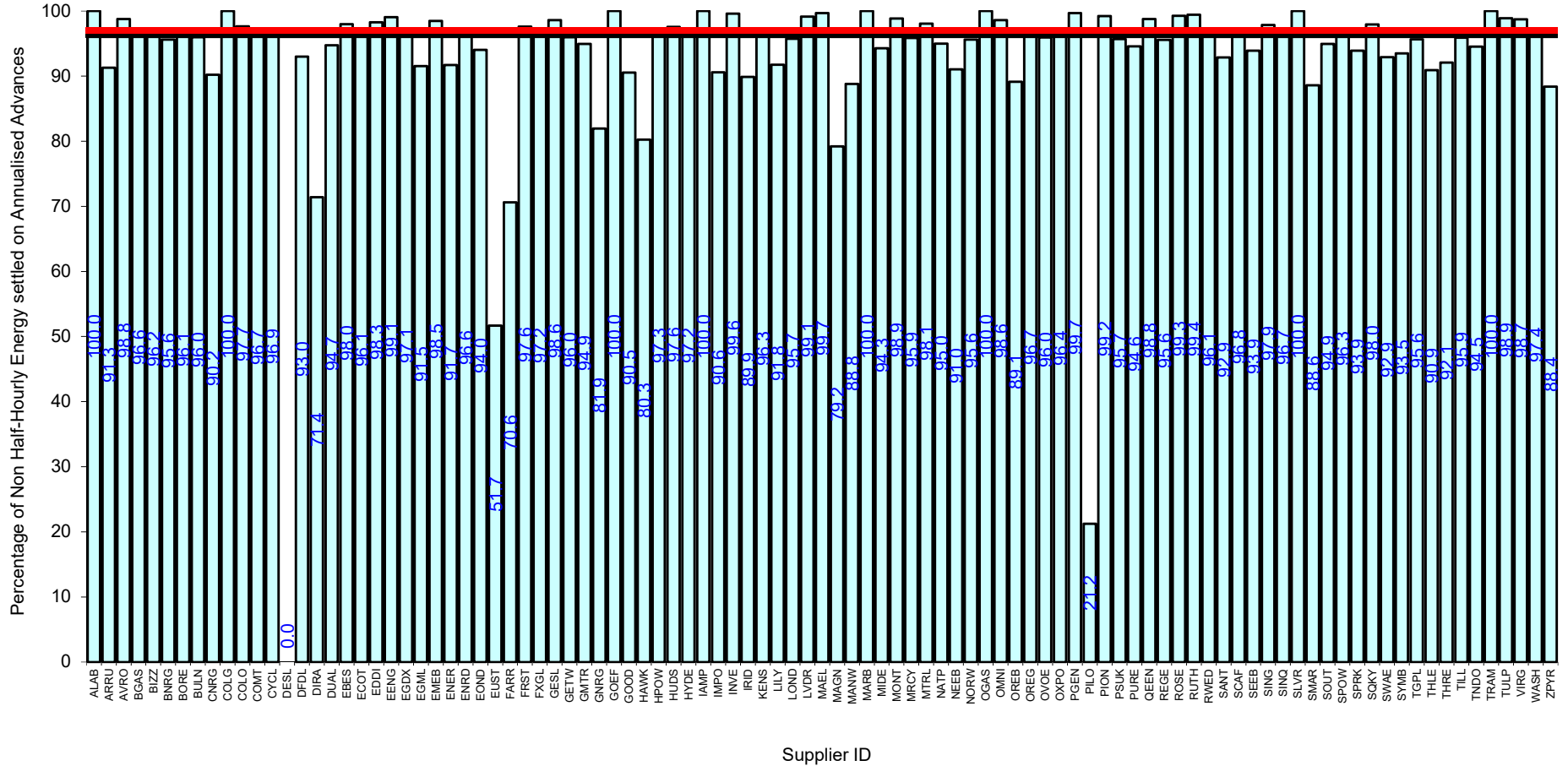
Serial SP08a. GSP Group: South Western (_L). Reporting Period 1 to 31 July 2022 . Reconciliation Run: RF

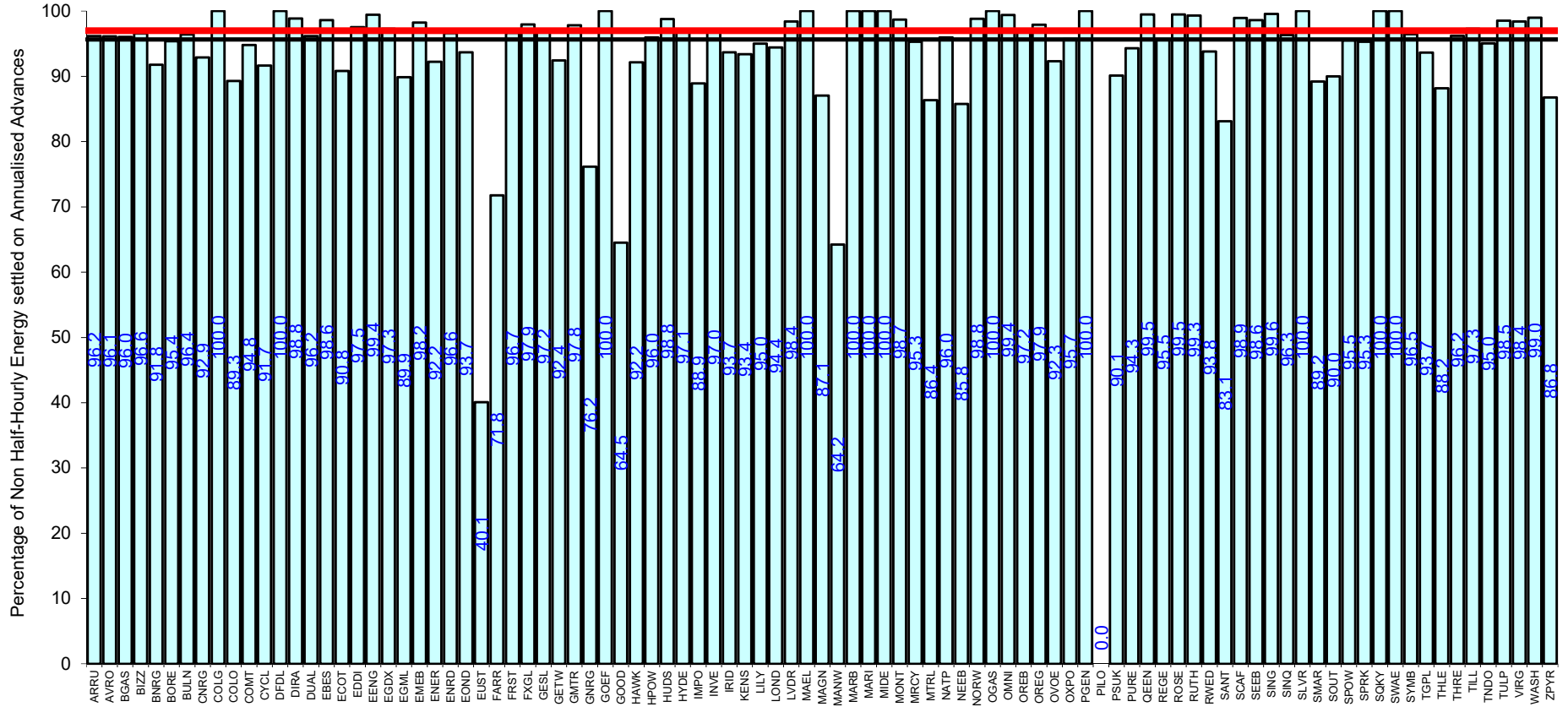


Serial SP08a. GSP Group: Yorkshire (_M). Reporting Period 1 to 31 July 2022 . Reconciliation Run: RF



Serial SP08a. GSP Group: South Scotland (_N). Reporting Period 1 to 31 July 2022 . Reconciliation Run: RF





Supplier ID

