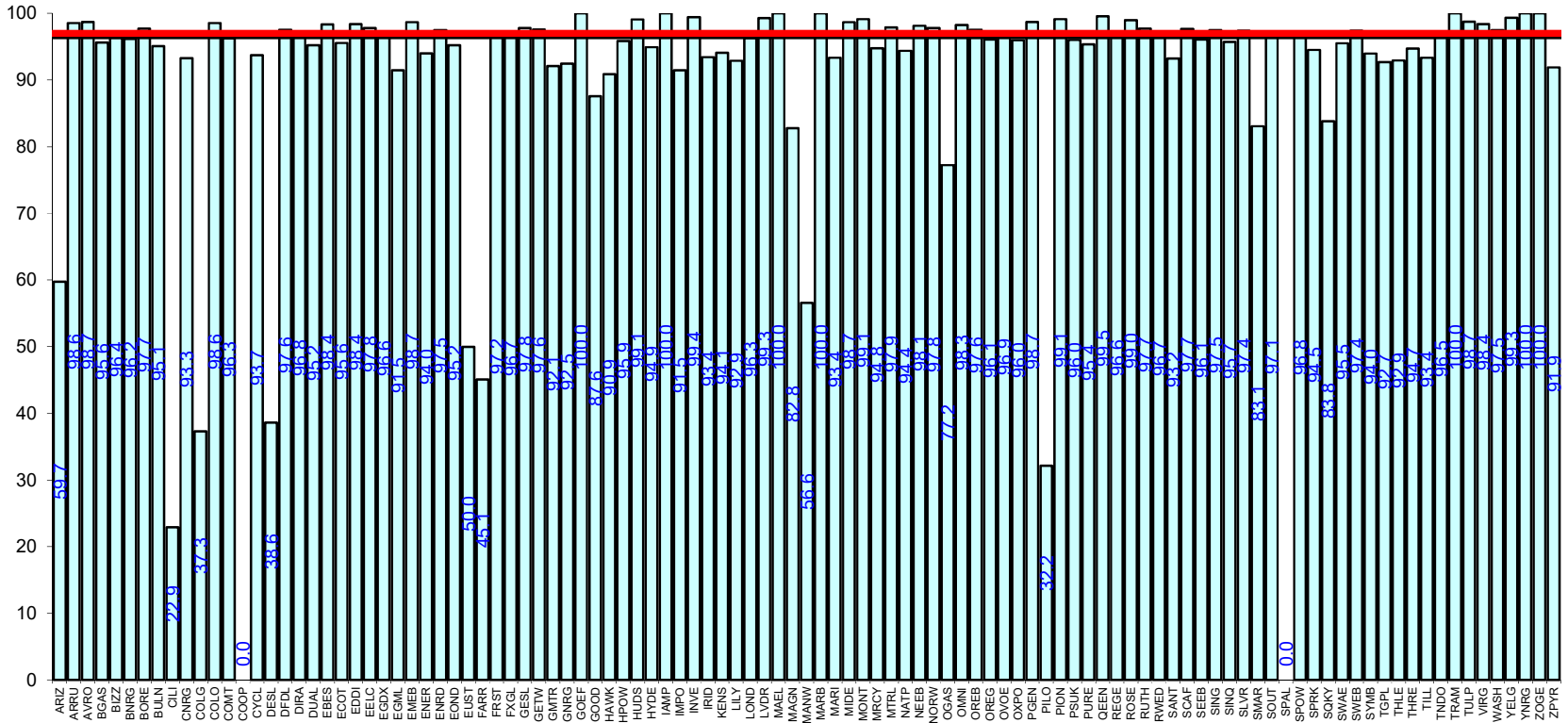
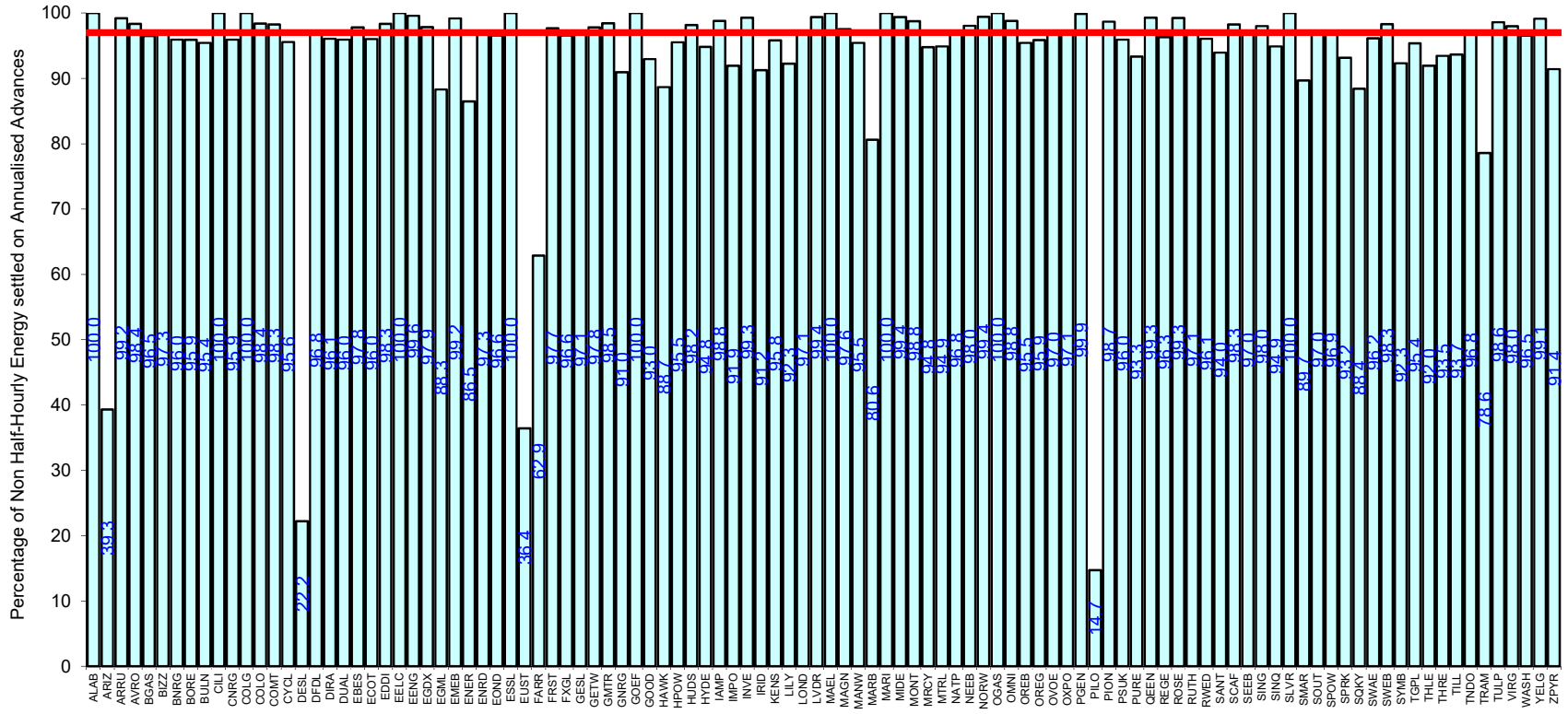


Percentage of Non Half-Hourly Energy settled on Annualised Advances



Supplier ID

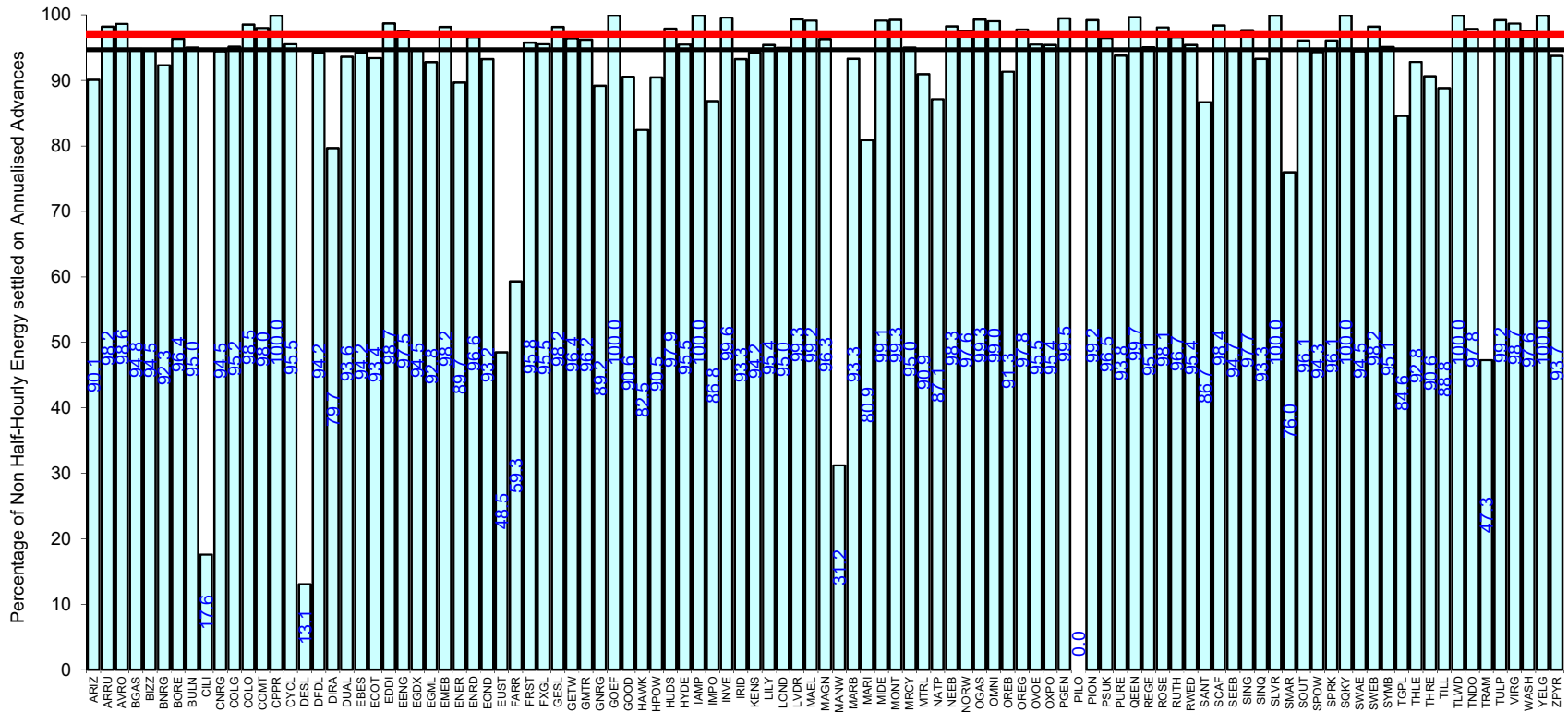




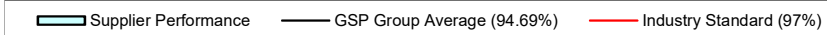
Supplier ID



Serial SP08a. GSP Group: London (_C). Reporting Period 1 to 30 June 2022 . Reconciliation Run: RF

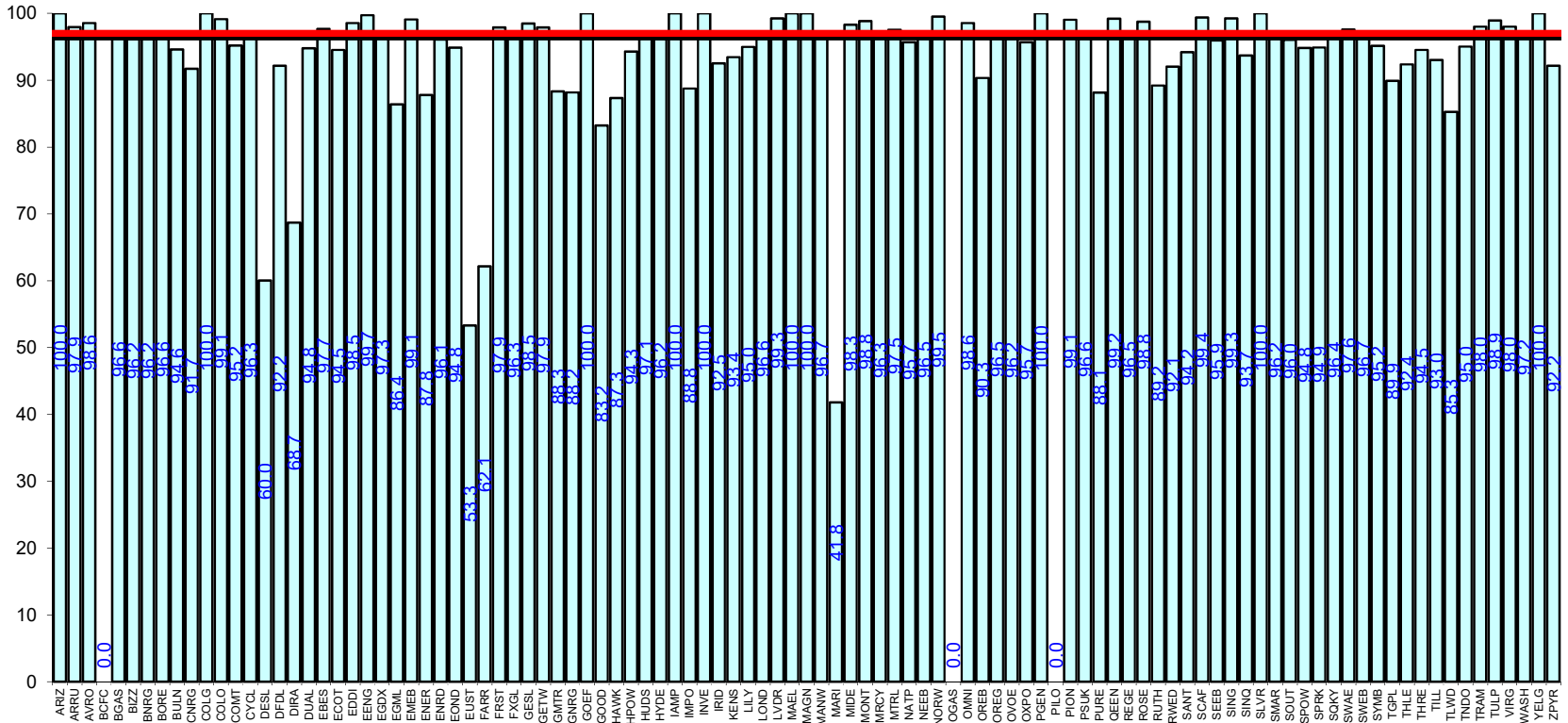


Supplier ID

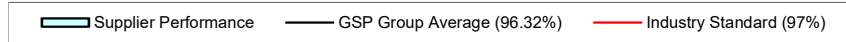


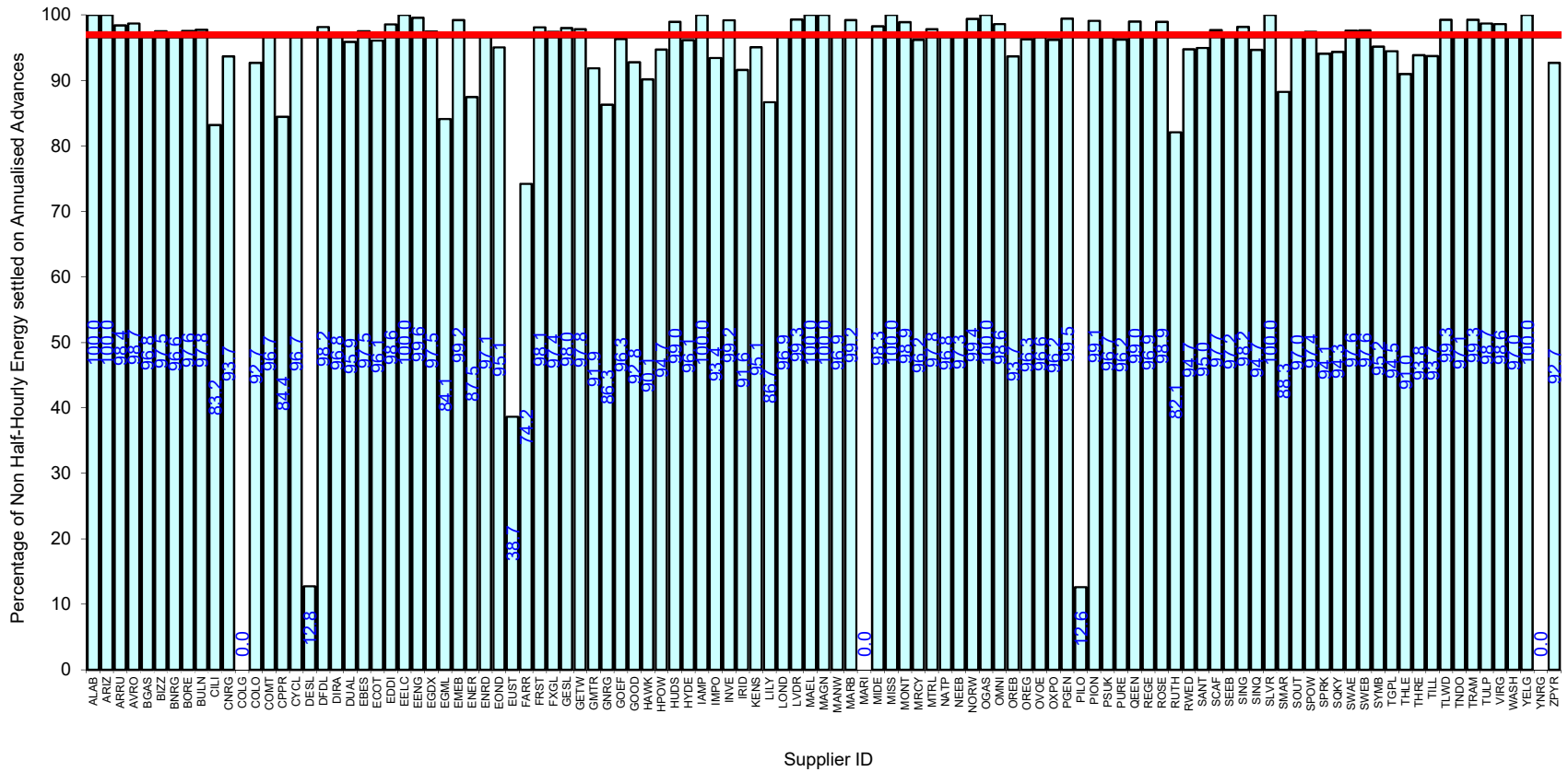
Serial SP08a. GSP Group: Merseyside and North Wales (_D). Reporting Period 1 to 30 June 2022 . Reconciliation Run: RF

Percentage of Non Half-Hourly Energy settled on Annualised Advances

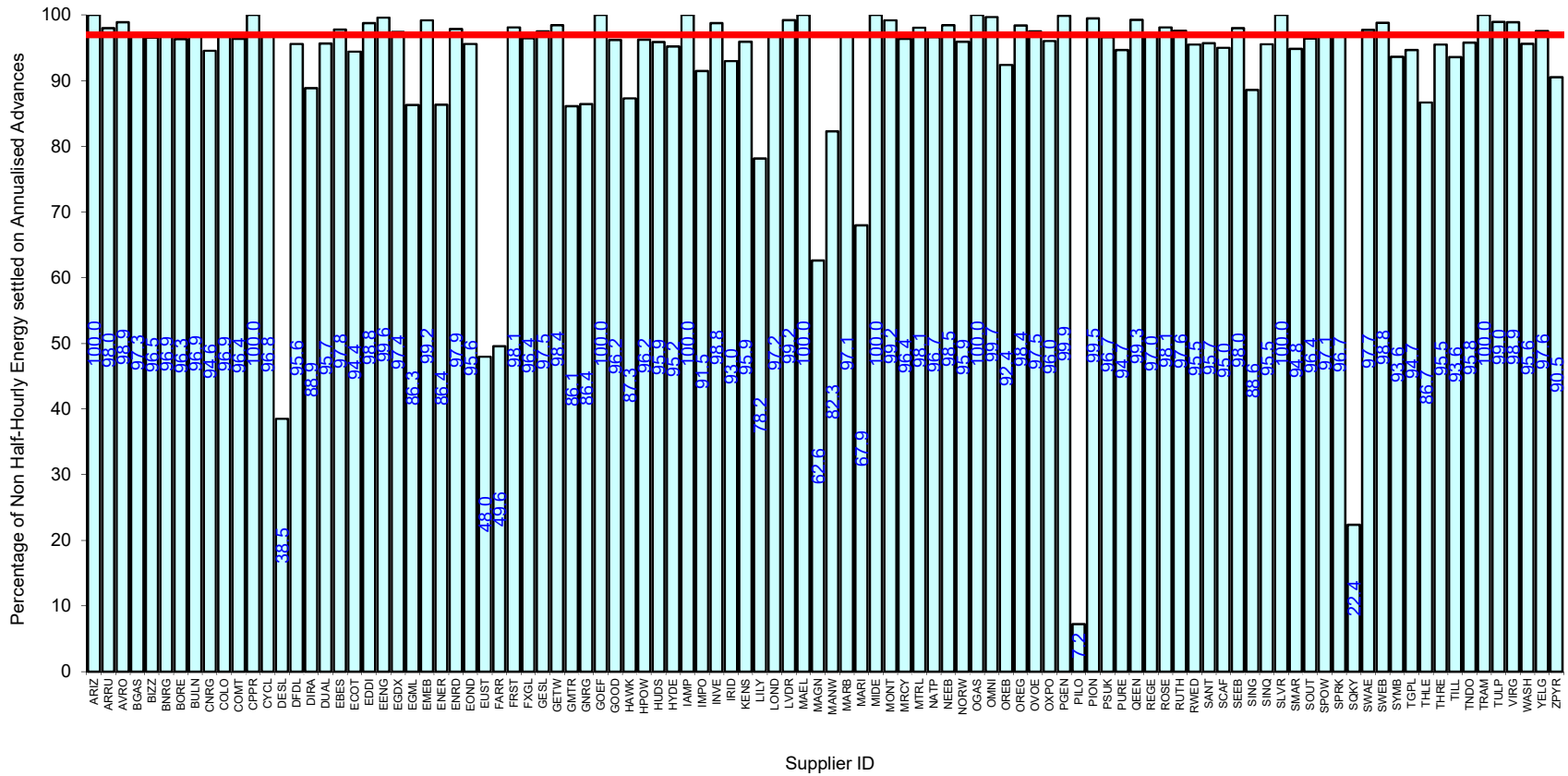


Supplier ID



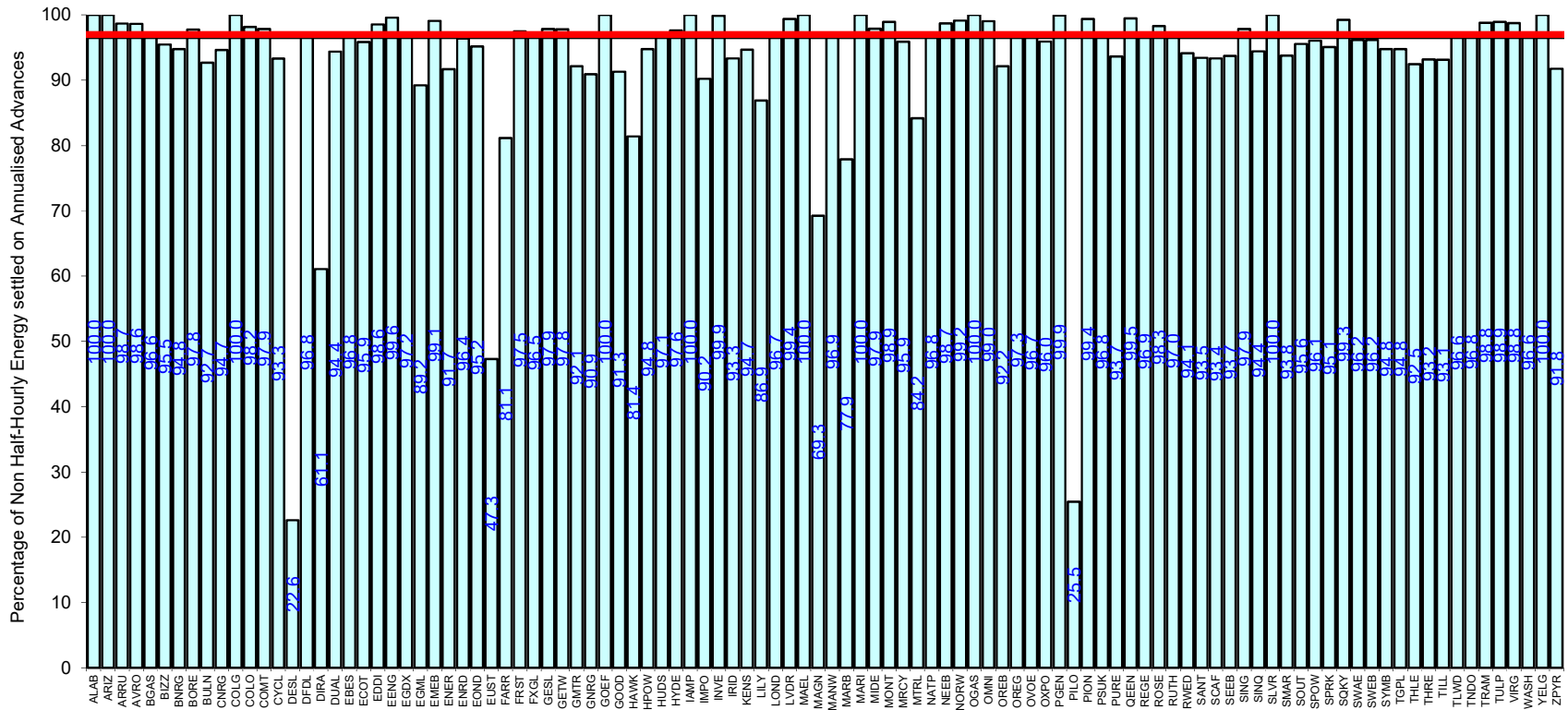


Serial SP08a. GSP Group: Northern (_F). Reporting Period 1 to 30 June 2022 . Reconciliation Run: RF

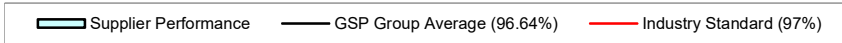


Supplier Performance
 GSP Group Average (96.83%)
 Industry Standard (97%)

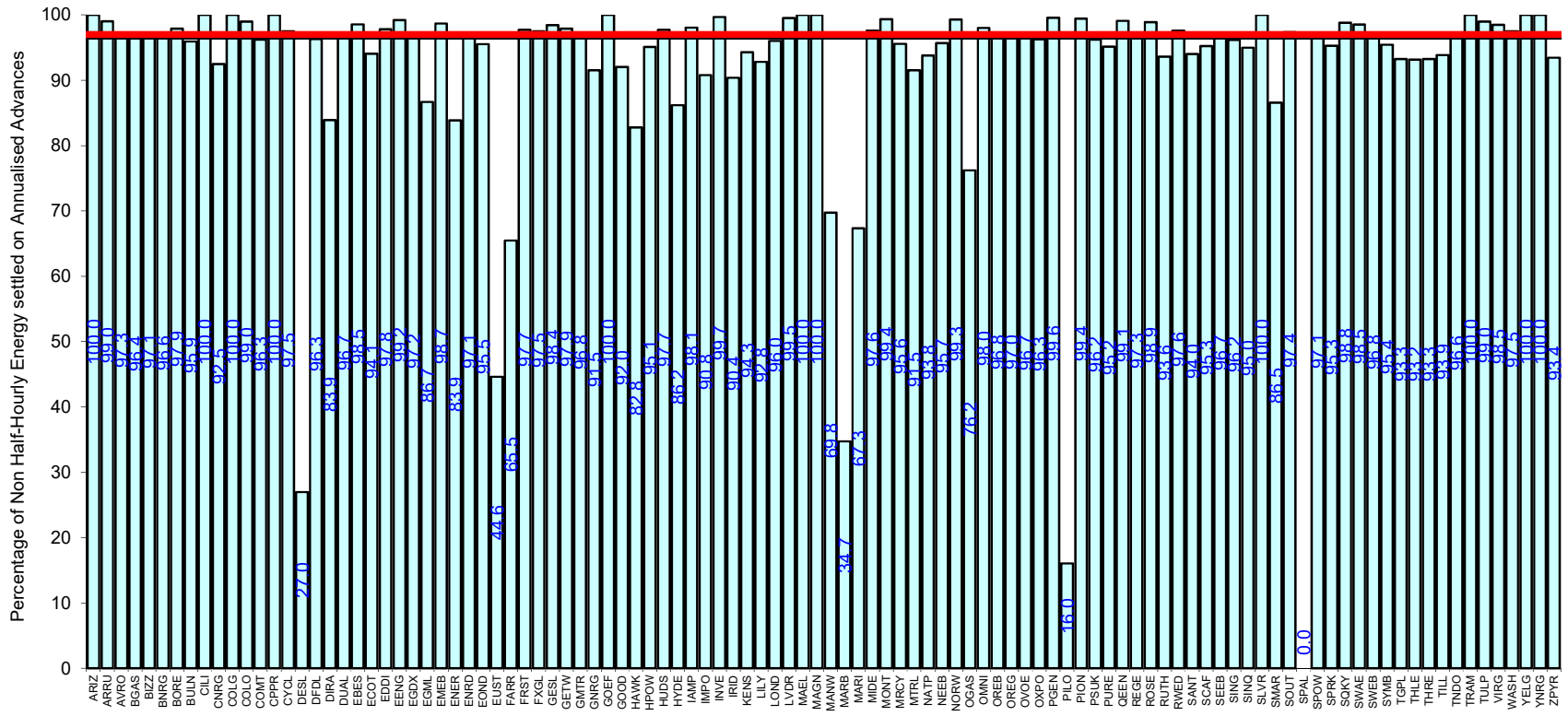
Serial SP08a. GSP Group: North Western (_G). Reporting Period 1 to 30 June 2022 . Reconciliation Run: RF



Supplier ID

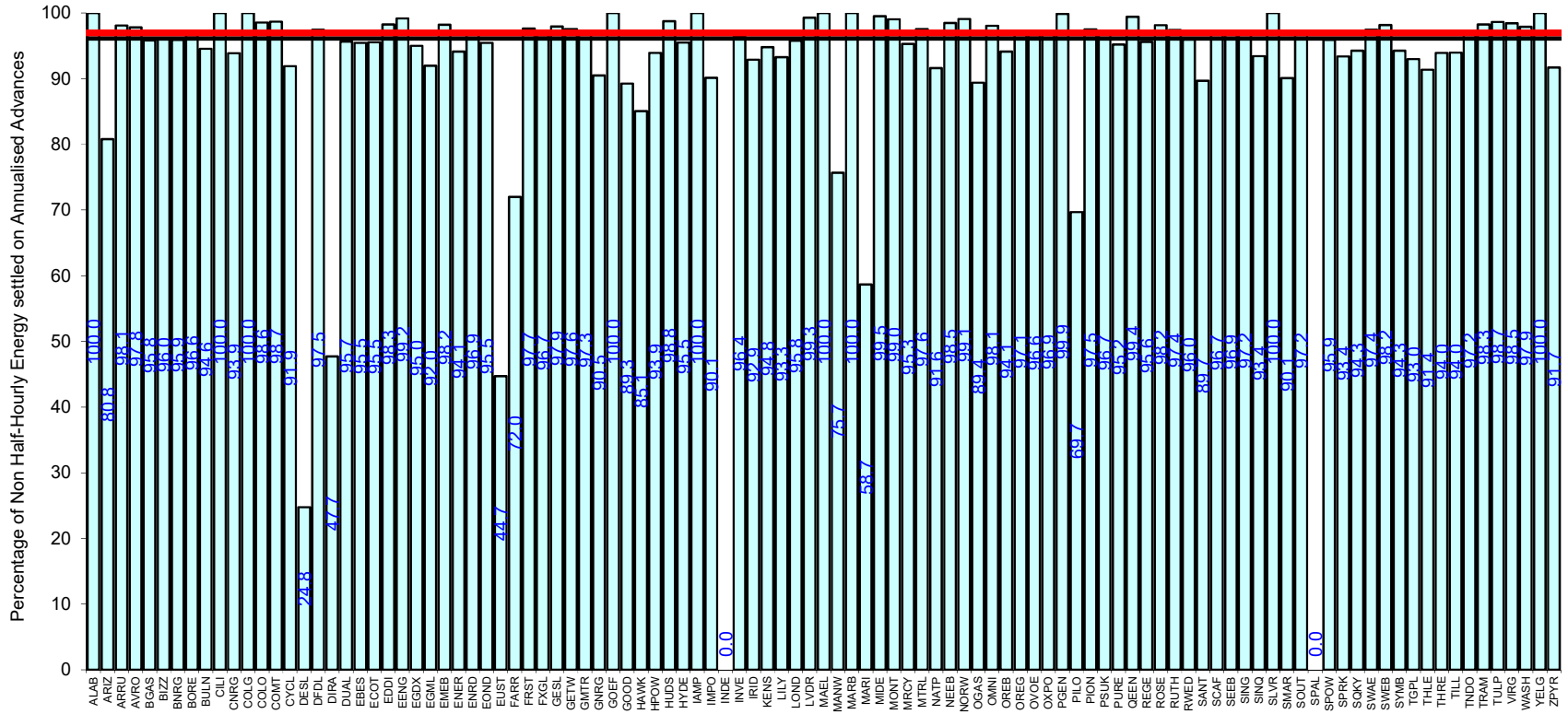


Serial SP08a. GSP Group: Southern (_H). Reporting Period 1 to 30 June 2022 . Reconciliation Run: RF



Supplier ID



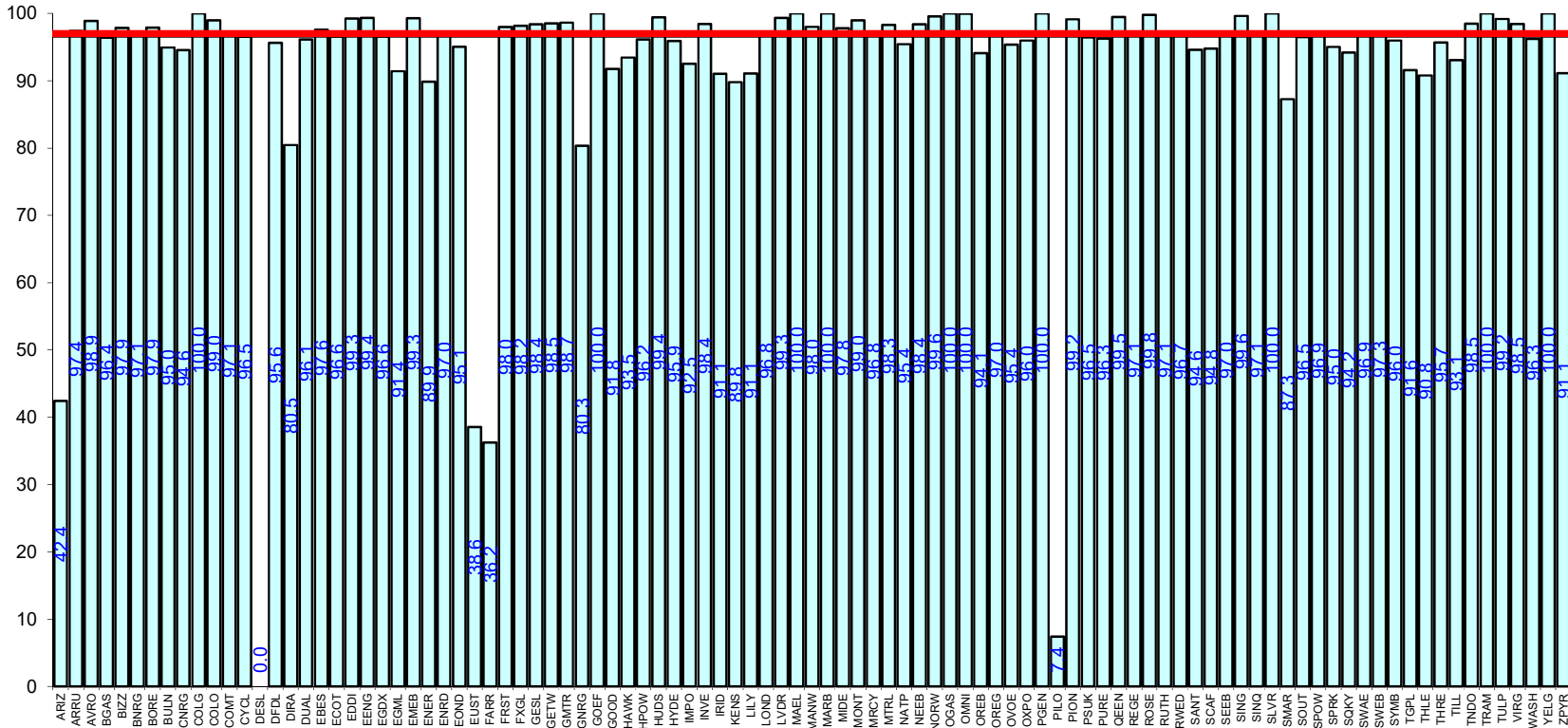


Supplier ID

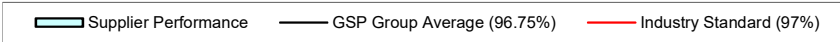


Serial SP08a. GSP Group: South Wales (_K). Reporting Period 1 to 30 June 2022 . Reconciliation Run: RF

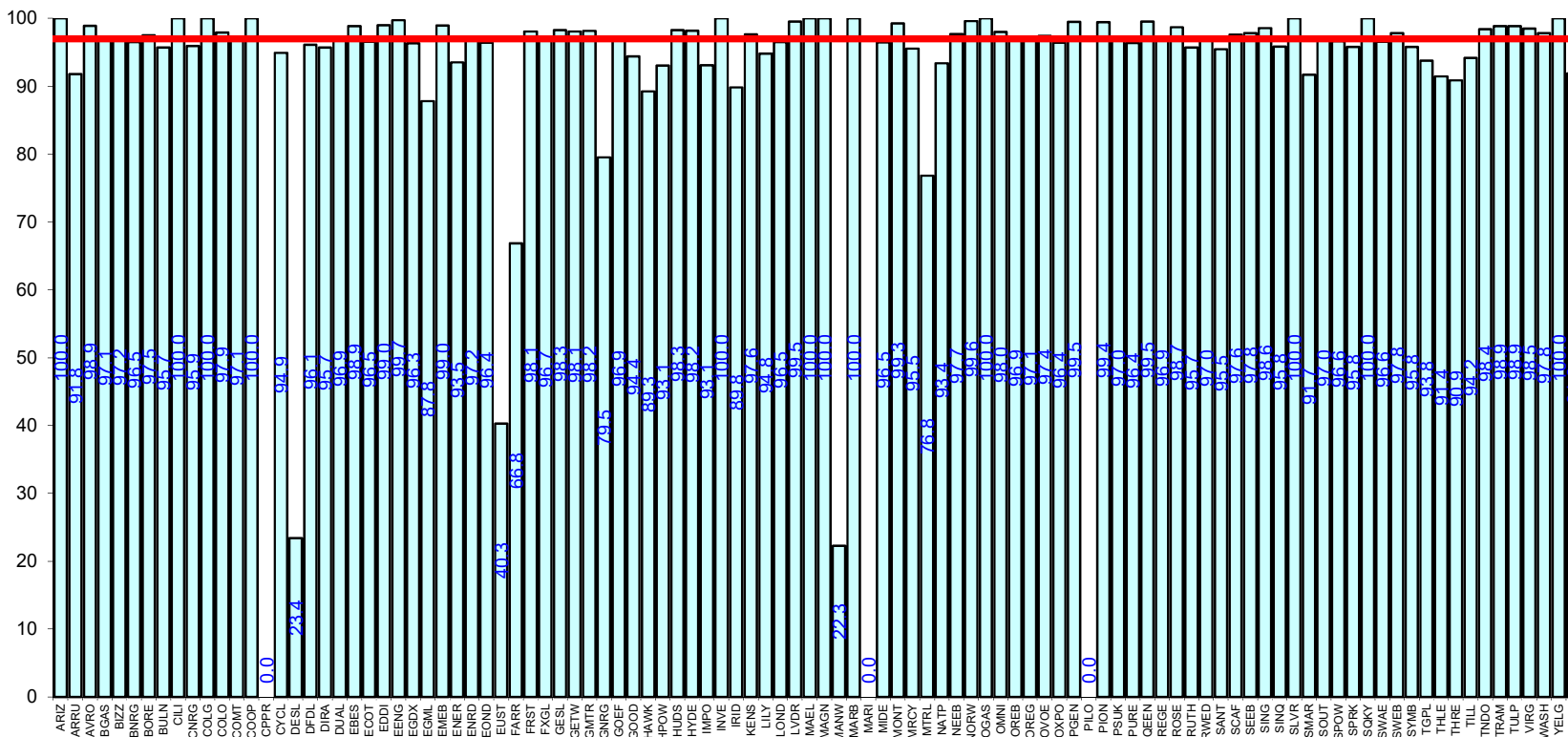
Percentage of Non Half-Hourly Energy settled on Annualised Advances



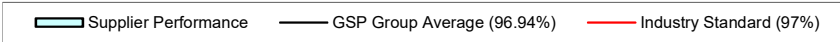
Supplier ID

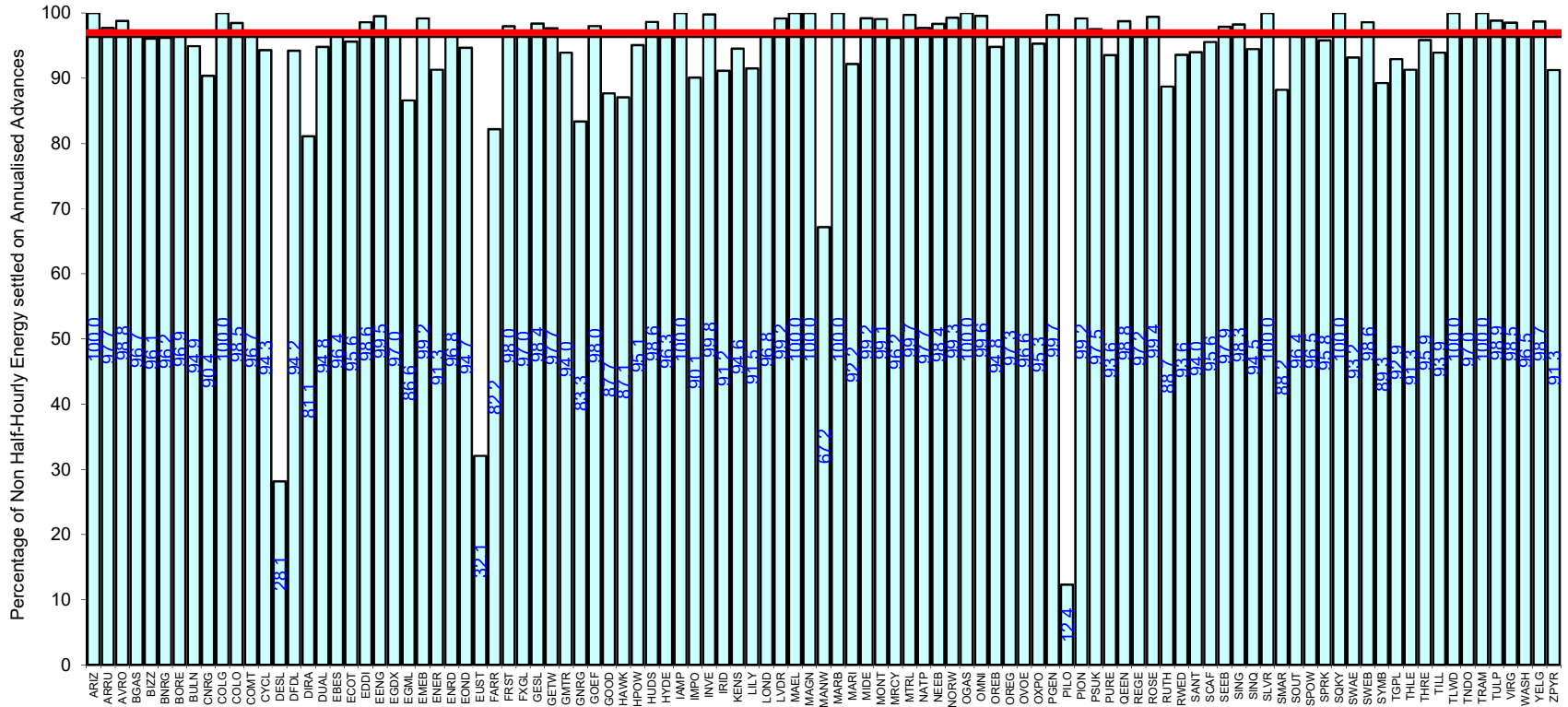


Percentage of Non Half-Hourly Energy settled on Annualised Advances



Supplier ID

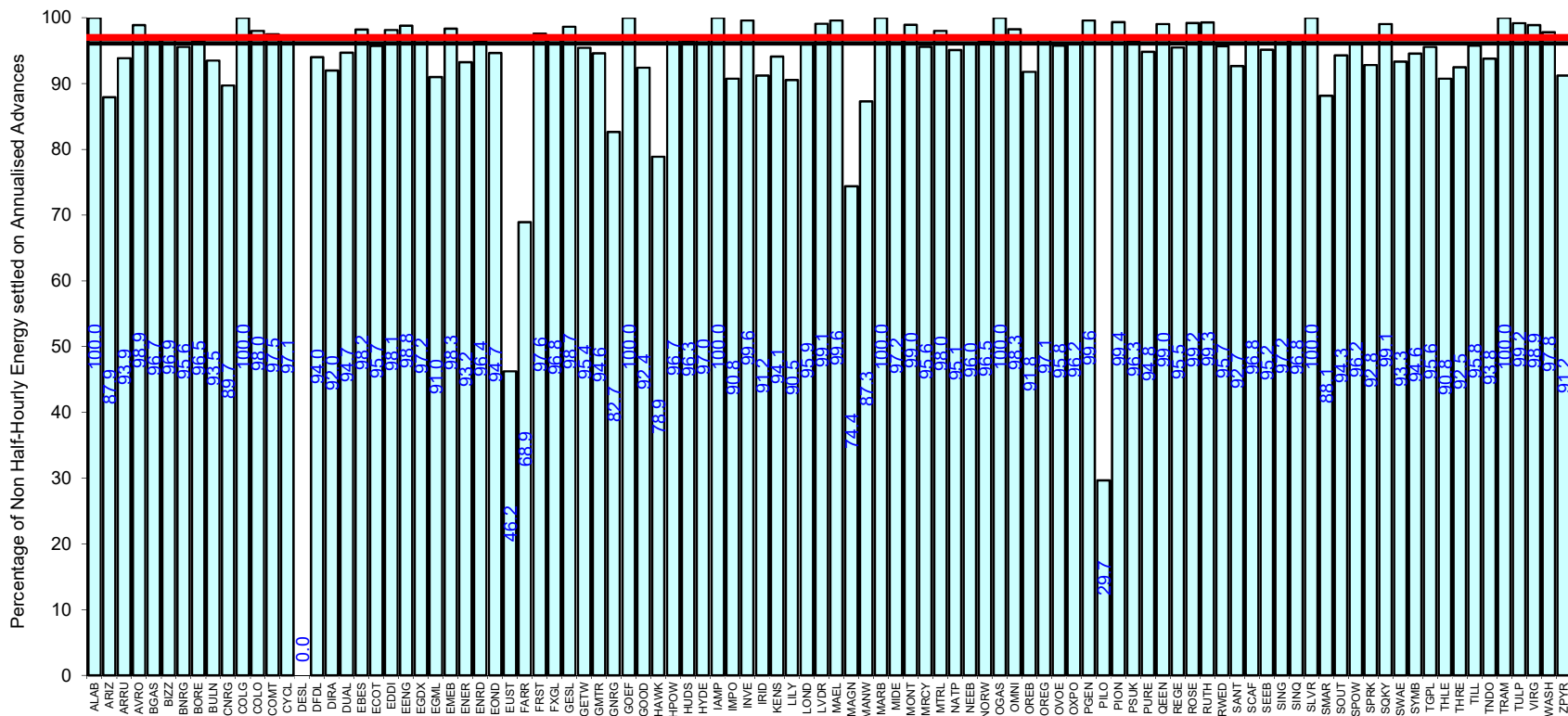




Supplier ID



Serial SP08a. GSP Group: South Scotland (_N). Reporting Period 1 to 30 June 2022 . Reconciliation Run: RF



Supplier ID

