

Balancing and Settlement Code

BSC PROCEDURE

Registration of Trading Units

BSCP31

~~Version 11.0~~

Date : ~~23 February 2012~~

BSC PROCEDURE 31**relating to****REGISTRATION OF TRADING UNITS**

1. Reference is made to the Balancing and Settlement Code and, in particular, to the definition of "BSCP" in Section X, Annex X-1 thereof.
2. This is BSC Procedure 31, ~~Version 11.0~~ relating to the Registration of Trading Units.
3. This BSC Procedure is effective from ~~23 February 2012~~.
4. This BSC Procedure has been approved by the Panel.

DRAFT

Intellectual Property Rights, Copyright and Disclaimer

The copyright and other intellectual property rights in this document are vested in ELEXON or appear with the consent of the copyright owner. These materials are made available for you for the purposes of your participation in the electricity industry. If you have an interest in the electricity industry, you may view, download, copy, distribute, modify, transmit, publish, sell or create derivative works (in whatever format) from this document or in other cases use for personal academic or other non-commercial purposes. All copyright and other proprietary notices contained in the document must be retained on any copy you make.

All other rights of the copyright owner not expressly dealt with above are reserved.

No representation, warranty or guarantee is made that the information in this document is accurate or complete. While care is taken in the collection and provision of this information, ELEXON Limited shall not be liable for any errors, omissions, misstatements or mistakes in any information or damages resulting from the use of this information or action taken in reliance on it.

AMENDMENT RECORD

| Version | Date | Description of Changes | Changes Included | Mods/ Panel/ Committee Refs |
|-------------|---------------------|--|--|---|
| 1.0 | Code Effective Date | Designated version | n/a | n/a |
| 2.0 | 30/11/00 | Work outstanding at Go Active, resolution of inconsistencies, inclusion of consultation comments | 208,184, 226, 243 | 08/009 |
| 3.0 | 28/02/02 | Incorporates changes for Modification P7 | P7 | ISG13/126 |
| 4.0 | 13/08/02 | Change Proposals for BSC Systems Release 2 | CP521, 546, 726 | ISG16/166 ISG18/190 |
| 5.0 | 24/06/03 | Change Proposals for June 03 Release | CP 749, 821 | |
| 6.0 | 24/06/03 | Approved Modification P62 | P62 | 48/003 |
| 7.0 | 12/09/03 | Approved Modification P100 for the CVA Programme Nov 03 Release | P100 | 57/007 |
| 8.0 | 23/02/05 | CVA Programme Feb 05 Release | BETTA 6.3, P159, CP970, CP1040, CP1091 | |
| 9.0 | 02/11/05 | CVA Programme November 05 Release | P174, P189, CP1108 | P174 87/004 ISG52/003 |
| 10.0 | 26/06/08 | June 08 Release | CP1223 | SVG84/02 ISG84/01 TDC109/01 PAB84/11 |
| 11.0 | 23/02/12 | February 2012 Release | P268 P269 | Panel 186/04 Panel 186/05 |
| <u>11.2</u> | <u>29/03/19</u> | <u>29 March 2019 Standalone Release</u> | <u>P369</u> | <u>TBC</u> |

CONTENTS

| | | |
|-----------------|--|-----------|
| 1 | Introduction | 6 |
| [P344]1.1 | Purpose and Scope of the BSC Procedure | 6 |
| [P344][P369]1.2 | Main Users of the BSC Procedure and their Responsibilities | 6 |
| 1.3 | Key Milestones | 6 |
| 1.4 | Balancing and Settlement Code Provision | 6 |
| 1.5 | Associated BSC Procedures | 7 |
| [P344]1.6 | Trading Unit Approval (including rules for Exempt Export Primary BM Units) | 7 |
| 1.7 | No longer used | 8 |
| 2 | Acronyms and Definitions | 9 |
| [P344][P369]2.1 | List of Acronyms | 9 |
| [P344]2.2 | Definitions | 9 |
| 3 | Interface and Timetable Information | 10 |
| [P369]3.1 | Registration of Trading Unit (Class 1, 2, 3, 5 or 6 Application) | 10 |
| [P369]3.2 | Registration of Trading Unit (Class 4 Application) | 13 |
| [P369]3.3 | De-Register Trading Unit | 15 |
| 3.4 | Election of Base or Sole Trading Unit for Embedded Exempt Export BM Units | 17 |
| 4 | Appendices | 20 |
| [P369]4.1 | Trading Unit Registration Information Requirements | 20 |
| 4.2 | Illustrative Diagrammatic Representations of Classes of Trading Unit | 21 |
| [P369]4.2.1 | Power Station with Optional Demand Fed from within the Power Station System | 23 |
| [P369]4.2.2 | Power Station and Demand Connected by Dedicated Assets | 25 |
| [P369]4.2.3 | Power Station and Demand Connected by Contiguous Assets | 26 |
| [P369]4.2.4 | Interconnectors | 27 |
| [P369]4.3 | BSCP31/4.3 Registration of Trading Unit Application Form | 30 |
| 4.4 | BSCP31/4.4 Registration of Trading Unit Class 4 Application Form | 32 |
| 4.5 | BSCP31/4.5 Registration of Trading Unit Details Form | 33 |
| 4.6 | BSCP31/4.6 De-Register Trading Unit | 34 |
| 4.7 | BSCP31/4.7 This form is no longer used | 35 |
| 4.8 | BSCP31/4.8 Amendments to Sole and Base Trading Unit Allocation for Embedded Exempt Export BM Units | 36 |
| [P369]4.9 | BSCP31/4.9 Notification of Trading Unit approval | 37 |
| 1 | Introduction | 5 |
| 1.1 | Purpose and Scope of the BSC Procedure | 5 |
| 1.2 | Main Users of the BSC Procedure and their Responsibilities | 5 |
| 1.3 | Key Milestones | 5 |
| 1.4 | Balancing and Settlement Code Provision | 5 |
| 1.5 | Associated BSC Procedures | 6 |
| 1.6 | Trading Unit Approval (including rules for Exempt Export BM Units) | 6 |

| | | |
|------------------|---|---------------|
| 1.7 | No longer used | 7 |
| 2 | Acronyms and Definitions | 8 |
| 2.1 | List of Acronyms | 8 |
| 2.2 | Definitions | 8 |
| 3 | Interface and Timetable Information | 9 |
| 3.1 | Registration of Trading Unit (Class 1, 2, 3, 5 or 6 Application) | 9 |
| 3.2 | Registration of Trading Unit (Class 4 Application) | 12 |
| 3.3 | De Register Trading Unit | 14 |
| 3.4 | Election of Base or Sole Trading Unit for Embedded Exempt Export BM Units | 16 |
| 4 | Appendices | 18 |
| 4.1 | Trading Unit Registration Information Requirements | 18 |
| 4.2 | Illustrative Diagrammatic Representations of Classes of Trading Unit | 19 |
| 4.2.1 | Power Station with Optional Demand Fed from within the Power Station System | 21 |
| 4.2.2 | Power Station and Demand Connected by Dedicated Assets | 22 |
| 4.2.3 | Power Station and Demand Connected by Contiguous Assets | 22 |
| 4.2.4 | Interconnectors | 23 |
| 4.3 | BSCP31/4.3 Registration of Trading Unit Application Form | 25 |
| 4.4 | BSCP31/4.4 Registration of Trading Unit Class 4 Application Form | 27 |
| 4.5 | BSCP31/4.5 Registration of Trading Unit Details Form | 28 |
| 4.6 | BSCP31/4.6 De Register Trading Unit | 29 |
| 4.7 | BSCP31/4.7 This form is no longer used | 30 |
| 4.8 | BSCP31/4.8 Amendments to Sole and Base Trading Unit Allocation for Embedded Exempt Export BM Units | 31 |
| 4.9 | BSCP31/4.9 Notification of Trading Unit approval | 32 |

1 Introduction

1.1 Purpose and Scope of the BSC Procedure

This BSCP defines the key interfaces, the timetable and the responsibilities of the Applicant Party, the BSCCo, the Panel and BSC Agents when associating more than one BM Unit with a Trading Unit. It does not cover the provisions of the Code relating to BM Unit registration.

This BSCP is designed to ensure orderly and efficient implementation of the Code provisions relating to BM Units being associated with the same Trading Unit. Every BM Unit is inherently a Sole Trading Unit and in isolation requires no further authorisation. This BSCP covers the process by which Applicant Parties demonstrate conformance with the criteria for qualification for more than one BM Unit being associated with a single Trading Unit.

This BSCP also describes the automatic Trading Unit allocation for Exempt Export BM Units, and how the Lead Party for an Exempt Export BM Unit can change this allocation.

IP369 1.2 Main Users of the BSC Procedure and their Responsibilities

This BSCP should be used by:

- (a) Applicant Party
- (b) BSCCo
- (c) The Panel
- (d) ~~Transmission Company~~ National Electricity Transmission System Operator (NEMTSO)
- (e) Licensed Distribution System Operator (LDSO)
- (f) Central Registration Agent (CRA)
- (g) Lead Party seeking to change an Exempt Export BM Unit's Trading Unit allocation

who are responsible for, or contribute to, the registration of a Trading Unit within the Central Registration System (CRS).

1.3 Key Milestones

The key milestone in this BSCP is the 30 Working Days notice required for the application.

1.4 Balancing and Settlement Code Provision

This BSCP should be read in conjunction with the Code and in particular Section K.

This BSCP has been produced in accordance with the provisions of the Code.

In the event of any inconsistency between the provisions of this BSCP and the Code, the provisions of the Code shall prevail.

1.5 Associated BSC Procedures

In using this BSCP, applicants should take note of the requirements of other BSCPs, as applicable.

| | |
|--------|---|
| BSCP15 | BM Unit Registration |
| BSCP20 | Registration of Metering System for Central Volume Allocation |
| BSCP38 | Authorisations |

1.6 Trading Unit Approval (including rules for Exempt Export BM Units)

Section K of the Code defines the rules under which Trading Units are approved and registered with the CRA. The Panel utilises these rules to confirm acceptance of a Trading Unit application.

With the exception of Base Trading Units, the configuration of a registered and effective Trading Unit may not change unless another application detailing the proposed changes has been made and approved. In the case of those Trading Units consisting only of Exempt Export BM Units in the same GSP Group (the Class 4 Trading Units), the Panel has delegated approval to BSCCo.

All Supplier Base and Additional (non Exempt Export) BM Units will automatically belong to the Base Trading Unit for the relevant GSP Group, and may not belong to any other Trading Unit.

An Exempt Export BM Unit which is Embedded in a Distribution System will automatically belong to the Base Trading Unit for the relevant GSP Group, but can elect to be a Sole Trading Unit or apply to be part of a Class 4 Trading Unit or other Trading Unit in accordance with this BSCP. Elections by Embedded Exempt Export BM Units to change their allocation from a Base Trading Unit to a Sole Trading Unit (or vice versa) do not require Panel approval. Applications by Embedded Exempt Export BM Units to form a new Class 4 Trading Unit or other Trading Unit require approval by BSCCo or the Panel respectively, and must follow this BSCP to ensure that the necessary criteria are met. Applications by Embedded Exempt Export BM Units to join or leave an existing Class 4 Trading Unit or other Trading Unit require the Trading Unit to be de-registered/re-registered as appropriate in accordance with this BSCP.

An Exempt Export BM Unit which is Directly Connected to the Transmission System will automatically be a Sole Trading Unit and may not form part of a Class 4 Trading Unit. It may apply to be part of another Trading Unit in accordance with this BSCP.

Other types of BM Unit may leave a Trading Unit and become a Sole Trading Unit on application in accordance with this BSCP.

A Trading Unit application will not be valid if any BM Unit which constitutes the proposed Trading Unit already belongs to any other Trading Unit other than a Sole

Trading Unit (or a Base Trading Unit in the case of Embedded Exempt Export BM Units).

1.7 No longer used

1.8 Impact of a BM Unit's Trading Unit Registration on its P/C Status

When in a Trading Unit with other Lead Parties, please note that changes to Generation Capacity (GC) and Demand Capacity (DC) values for other BM Units within the Trading Unit can affect the overall P/C Status of the Trading Unit and thus the BM Units within it.

Exempt Export BM Units which have explicitly set their P/C Flag to Production or Consumption in accordance with Section K3.5 and BSCP15 are an exception, as their P/C Status will be fixed by their P/C Flag independently of their Trading Unit.

With the exception of any Exempt Export BM Units in Base Trading Units which have explicitly elected to have a P/C Flag (and thereby a fixed P/C Status) of Production, all BM Units in Base Trading Units will always have a fixed P/C Status of Consumption regardless of the GC/ DC values of the BM Units in the Base Trading Unit. This includes all Supplier Base and Additional (non Exempt Export) BM Units.

DRAFT

2 Acronyms and Definitions

P369 2.1 List of Acronyms

The following is a list of acronyms used in BSCP31:

| Acronym | Expression |
|---------------|--|
| BSCCo | Balancing and Settlement Code Company |
| CoBO | Change of BM Unit Ownership (CoBO) |
| CRA | Central Registration Agent |
| CRS | Central Registration Service |
| GSP | Grid Supply Point |
| LDSO | Licensed Distribution System Operator |
| <u>NETSO</u> | <u>National Electricity Transmission System Operator as the holder of the Transmission Licence and any reference to "NETSO", "NGESO", "National Grid Company" or "NGC" in the Code or any Subsidiary Document shall have the same meaning.</u> |
| TC | Transmission Company |
| WD | Working Day |

2.2 Definitions

Trading Unit Effective From Date

Relates to the date when nominated BM Units are associated with one Trading Unit on the condition that the configuration and construction of the BM Unit(s) is as specified in the Trading Unit Application.

Applicant Party

The Applicant or Applicants joining the Trading Unit who are Parties to the Code.

All other terms are as defined in the Code

3 Interface and Timetable Information

IP369 3.1 Registration of Trading Unit (Class 1, 2, 3, 5 or 6 Application)¹

| REF | WHEN | ACTION | FROM | TO | INPUT INFORMATION REQUIRED | METHOD |
|-------|--|---|----------------------------|-----------------|---|--------------------------------|
| 3.1.1 | As determined by Applicant | Request application form | Applicant Party | BSCCo | Address for application forms | Fax / Letter / Website / Email |
| 3.1.2 | Within 3 WD of 3.1.1 | Provide Trading Unit application documentation | BSCCo | Applicant Party | Application forms plus copy of BSCP if requested BSCPs BSCP31/4.3, Registration of Trading Unit Application Form BSCP31/4.5, Registration of Trading Unit Details Form N.B. These forms must be signed by an authorised person as registered under BSCP38. | Fax / Post / Email |
| 3.1.3 | As determined by Applicant Party but at least 30 WD prior to the Panel meeting | Submit application forms and supporting documentation | Applicant Party or Parties | BSCCo | Completed application documentation and supporting documentation (see Section 4.1 for details) BSCP31/4.3, Registration of Trading Unit Application Form BSCP31/4.5, Registration of Trading Unit Details Form | Fax / Post / Email |

¹ This process shall not apply where a Trading Unit is being transferred from one Party to another as part of the CVA BM Unit CoBO process (providing no other changes are being made to the registration data associated with the BM Units). Please refer to the 'Change of CVA BM Unit Ownership' process in BSCP15 which defines the process for transferring the ownership of Trading Units in such circumstances.

| REF | WHEN | ACTION | FROM | TO | INPUT INFORMATION REQUIRED | METHOD |
|-------|--|--|---|---|--|--------------------------|
| 3.1.4 | Within 1 WD of receipt of 3.1.3 | Send a copy of the application to the Transmission Company NETSO or LDSO to seek confirmation that the BM Unit metering arrangements are compatible with Use of System charging, Transmission Service Charging and that the arrangement is operationally acceptable, as appropriate. | BSCCo | TC NETSO / LDSO, as appropriate | Completed registration documentation (see Section 4.1 for details) BSCP31/4.3, Registration of Trading Unit Application Form BSCP31/4.5, Registration of Trading Unit Details Form | Post /Email |
| 3.1.5 | Within 3 WD of receipt of 3.1.4 | Give confirmation or agree changes necessary to allow confirmation to be given. | TC NETSO / LDSO, as appropriate | BSCCo | Confirmation notice with any further changes identified, as appropriate | Fax /Letter /Email |
| 3.1.6 | Within 4 WD of receipt of 3.1.3 | Determine if further information or other evidence is required to demonstrate compatibility with the Code. | BSCCo | | Completed application forms and supporting documentation. BSCP31/4.3, Registration of Trading Unit Application Form BSCP31/4.5, Registration of Trading Unit Details Form | Internal |
| 3.1.7 | If required by BSCCo | Submit further evidence as required | Applicant Party | BSCCo | Details of further information | Fax /Letter /Post /Email |
| 3.1.8 | By the next Panel paper day, submit Application Form | Submit application forms and supporting evidence | BSCCo | Panel | Completed application forms and supporting evidence. BSCP31/4.3, Registration of Trading Unit Application Form BSCP31/4.5, Registration of Trading Unit Details Form | Email /Post |

| REF | WHEN | ACTION | FROM | TO | INPUT INFORMATION REQUIRED | METHOD |
|--------|--|---|-------|--|--|--------------------------------------|
| 3.1.9 | Panel Meeting | Panel review application and decide to accept, reject or request further information in accordance with the Code. | Panel | | Completed application forms and supporting evidence. BSCP31/4.3, Registration of Trading Unit Application Form BSCP31/4.5, Registration of Trading Unit Details Form | Panel Meeting |
| 3.1.10 | Within 1 WD after Panel Meeting | If appropriate, confirm Trading Unit Effective From Date Confirm to applicant Lead Parties the obligation to notify the Panel if a BM Unit belonging to the approved Trading Unit no longer satisfies the requirements under which the Trading Unit was approved | BSCCo | CRA Applicant Party TCNETSO | Confirmation that the Panel has approved nominated Trading Unit and the Trading Unit Effective From Date. BSCP31/4.9, Notification of Trading Unit Approval Form | Fax / Letter / Email |
| 3.1.11 | Upon receipt of notification of 3.1.10 | CRA to notify BSC Agents, Applicant Party & BSCCo of Trading Unit Effective From Date and associated data. | CRA | Other BSC Agents Applicant Party BSCCo | Trading Unit Effective From Date and associated data – Registration Report CRA-1014. Trading Unit name and confirmation of processing. | Electronic Post / Email / Fax |

[P369]3.2 Registration of Trading Unit (Class 4 Application)

| REF | WHEN | ACTION | FROM | TO | INPUT INFORMATION REQUIRED | METHOD |
|-------|---|---|----------------------------|-----------------|---|--------------------------------|
| 3.2.1 | As determined by Applicant | Request application form | Applicant Party | BSCCo | Address for application forms | Fax / Letter / Website / Email |
| 3.2.2 | Within 3 WD of 3.2.1 | Provide Trading Unit application documentation | BSCCo | Applicant Party | Application forms plus copy of BSCP if requested BSCP31/4.4, Registration of Class 4 Trading Unit Application Form BSCP31/4.5, Registration of Trading Unit Details Form N.B. These forms must be signed by an authorised person as registered under BSCP38. | Fax / Post / Email |
| 3.2.3 | As determined by Applicant Party but at least 10 WD prior to requested Trading Unit Effective From date | Submit application forms and supporting documentation | Applicant Party or Parties | BSCCo | Completed application documentation and supporting documentation (see Section 4.1 for details) BSCP31/4.4, Registration of Class 4 Trading Unit Application Form BSCP31/4.5, Registration of Trading Unit Details Form | Fax / Post / Email |
| 3.2.4 | Within 4 WD of receipt of 3.2.3 | Review application by checking that all the nominated BM Units are Exempt Export BM Units and are all located in the same GSP Group. Accept or reject application, or if necessary, request further information. | BSCCo | | Completed application forms and supporting documentation. BSCP31/4.4, Registration of Class 4 Trading Unit Application Form BSCP31/4.5, Registration of Trading Unit Details Form | Internal |

[P369]3.3 De-Register Trading Unit³

| REF | WHEN | ACTION | FROM | TO | INPUT INFORMATION REQUIRED | MEDIUM |
|-------|--|--|-----------|--|---|----------------------|
| 3.3.1 | At least 20 WD prior to de-registration date | Submit application form | Applicant | BSCCo Lead Parties in that Trading Unit | BSCP31/4.6, Trading Unit De-Registration | Fax / Post / Email |
| 3.3.2 | Within 3 WD of 3.3.1 | Check application for completeness and authorisation. On completion of internal checks, confirm receipt to applicant | BSCCo | Applicant | BSCP31/4.6, Trading Unit De-Registration | Fax / Post / Email |
| 3.3.3 | Within 3 WD of 3.3.1 | Notify CRA and TCNETSO of de-registration application | BSCCo | CRA TCNETSO | BSCP31/4.6, Trading Unit De-Registration | Fax / Post / Email |
| 3.3.4 | At Least 15 WD prior to De-Registration Date | Notify BSCCo and Applicant that the Trading Unit shall be de-registered | CRA | BSCCo Applicant | Confirmation that the Trading Unit shall be de-registered and de-registration date. | Fax / Letter / Email |
| 3.3.5 | At least 15 WD prior to De-Registration Date | Allocate any / each Exempt Export BM Unit to either a Sole Trading Unit or the Base Trading Unit for the GSP Group, as specified on form BSCP31/4.6 (if there is no specification, allocate the BM Unit to the Base Trading Unit if Embedded, or to a Sole Trading Unit if Directly Connected). The allocation should be effective from the calendar day following the effective to date of the Trading Unit being de-registered. | CRA | | Form BSCP31 / 4.6 | Internal |

³ This process shall not apply where a Trading Unit is being transferred from one Party to another as part of the CVA BM Unit CoBO process (providing no other changes are being made to the registration data associated with the BM Units). Please refer to the 'Change of CVA BM Unit Ownership' process in BSCP15 which defines the process for transferring the ownership of Trading Units in such circumstances.

| REF | WHEN | ACTION | FROM | TO | INPUT INFORMATION REQUIRED | MEDIUM |
|-------|---------------------------|--|------|--|--|------------|
| 3.3.6 | At the same time as 3.3.5 | CRA to notify Applicant Party, BSC Agents and BSCCo of Trading Unit de-registration date and associated data | CRA | BSC Agents Applicant Party BSCCo | BM Unit, Interconnector and GSP Group Registration Data (CRA-I015) Registration Report (CRA-1014). Operations Registration Data (CRA-I020) | Electronic |

DRAFT

3.4 Election of Base or Sole Trading Unit for Embedded Exempt Export BM Units

This process supports the request by a Lead Party for an Embedded Exempt Export BM Unit to change its allocated Trading Unit from a Base Trading Unit to a Sole Trading Unit or vice versa , as set out in Section K4.7.

It should be noted that where the Exempt Export BM Unit is applying to join or leave a Class 4 Trading Unit, then these processes are covered by 3.2 and 3.3 of this BSCP.

| REF | WHEN | ACTION | FROM | TO | INPUT DATA REQUIRED | MEDIUM |
|-------|-------------------------------------|---|------------|-------|---|-----------------|
| 3.4.1 | As required | Submit notice to BSCCo, requesting a change to Trading Unit allocation (Sole or Base only) of an Embedded Exempt Export BM Unit. The request should contain an effective date for such amendment of no earlier than 5 WD from this notice. | Lead Party | BSCCo | Form BSCP31 / 4.8 | Fax/post/e-mail |
| 3.4.2 | As soon as practicable after 3.4.1. | Where the BM Unit does not have Exempt Export Status is not Embedded,, or is allocated to another (not Sole or Base) Trading Unit which is not being de-registered, then notify the Party of the rejection of the request. | BSCCo | Party | Form BSCP31 / 4.8 Specifying reason for rejection. | Fax/post/e-mail |
| 3.4.3 | Within 1 WD of 3.4.1 | Where the request is valid, forward the notice to the CRA, requesting a change to Trading Unit allocation (Sole or Base only) of an Embedded Exempt Export BM Unit. | BSCCo | CRA | Form BSCP31 / 4.8 | Fax/post/e-mail |

| REF | WHEN | ACTION | FROM | TO | INPUT DATA REQUIRED | MEDIUM |
|-------|-------------------------------------|---|------|--|--|--|
| 3.4.4 | Within 1 WD of receipt of 3.4.3 | CRA ensures that the Exempt Export Flag is set for the BM Unit and that the BM Unit is Embedded. This may involve obtaining authorisation from BSCCo. | CRA | | As submitted in 3.4.3 | Internal |
| 3.4.5 | As soon as practicable after 3.4.4. | Where the Exempt Export Flag is set and the BM Unit is Embedded, then verify that the Embedded Exempt Export BM Unit currently belongs to either a Sole Trading Unit, or the Base Trading Unit (for the relevant GSP Group). | CRA | | | Internal |
| 3.4.6 | As soon as practicable after 3.4.5 | Where the conditions at 3.4.5 are verified, amend the Trading Unit allocation for the BM Unit, effective from the specified date. Notify the Party, BSCCo and the Transmission Company <u>NETSO</u> of the change to Trading Unit allocation. | CRA | Party BSCCo TC <u>NETSO</u> | Registration Report (CRA – I014) CRA – I020 Registration update (CRA – I015) | Electronic Fax/e-mail/post/ electronic |
| 3.4.7 | As soon as practicable after 3.4.6. | Notify BSC Agents of the change to Trading Unit allocation. | CRA | BSC Agents | Registration update (CRA – I015) | Electronic |

| REF | WHEN | ACTION | FROM | TO | INPUT DATA REQUIRED | MEDIUM |
|-------|-------------------------------------|---|------|----------------|--|-----------------|
| 3.4.8 | As soon as practicable after 3.4.5. | Where the Exempt Export Flag is not set, the BM Unit is not Embedded, or the BM Unit is allocated to another (not Sole or Base) Trading Unit which is not being de-registered, then do not amend the Trading Unit allocation for the BM Unit. Notify the Party of the rejection of the request | CRA | Party BSCCo | Form BSCP31 / 4.8 Specifying reason for rejection. | Fax/post/e-mail |

DRAFT

4 Appendices

P369 4.1 Trading Unit Registration Information Requirements

Applicant Party shall send a written application to the BSCCo.

Trading Units other than Class 4 Trading Units

(a) Information Required

- Name and address of Applicant.
- Confirmation from all the Authorised Signatories of the relevant Lead Parties of their agreement to be associated with a single Trading Unit.
- Full description of the nominated BM Units.
- Full description of the Metering Systems located or to be located at the nominated BM Unit(s) and their location.
- Full description of the points at which all relevant electricity flows will be measured.
- Such other information as the applicants shall consider relevant to their application.
- Basis for the application.
- Additional information may be provided for consideration by the BSCCo.
- Evidence which demonstrates sufficient similarities with sites which would satisfy the conditions applicable to Class 1, Class 2, Class 3, Class 5 or Class 6 Trading Units, such that it would be unreasonable not to treat the nominated BM Unit(s) as a Trading Unit.

(b) Documentation Required

- Line Diagrams showing electrical connections at the Nominated BM Unit(s).
- Line Diagrams showing location of Metering Systems and measurement points.
- Schedule of Dedicated Assets and or Contiguous Assets and evidence to support this schedule and classification such as Connection Agreement documentation (this will not be required for Class 1 or Class 5A Trading Units).
- Evidence that assets and equipment electrically connecting the generation and demand are capable of supporting the quantity of electricity to be delivered and accepted at the nominated BM Unit(s).

- Confirmation from the ~~Transmission Company~~ NETSO that the metering arrangements are compatible.
- BSCP31/4.3 Registration of Trading Unit Application Form.
- BSCP31/4.5 Registration of Trading Unit Details Form.

Class 4 Trading Units

(a) Information Required

- Name and Address of Exempt Export BM Units.
- GSP Group.
- Trading Unit name.
- Lead Parties.
- Effective From Date.

(b) Documentation Required

- List of BM Units to be associated with the Class 4 Trading Unit.
- Confirmation from the CRA that the Exempt Export BM Units to be associated with the Class 4 Trading Unit are Embedded and are located in the same GSP Group.
- Confirmation from the CRA that none of the BM Units to be associated with the Class 4 Trading Unit have been registered pursuant to section K2.1.1 (d) of the BSC.
- Letters from each Trading Unit Lead Party confirming their agreement that the Exempt Export BM Units will belong to that Trading Unit.

4.2 Illustrative Diagrammatic Representations of Classes of Trading Unit

| | |
|----------------------|--|
| Trading Unit Class 1 | Representation of a Power Station with optional additional demand fed from within the Power Station system |
| Trading Unit Class 2 | Representation of a Power Station and demand connected by Dedicated Assets |
| Trading Unit Class 3 | Representation of a Power Station and demand connected by Contiguous Assets |
| Trading Unit Class 5 | Representations of: <ul style="list-style-type: none"> (a) Interconnector BM Units associated with the same Interconnector where such Interconnector is located at one Site only; |

- (b) Interconnector BM Units associated with the same Interconnector where such Interconnector is located at one Site only and other BM Unit(s) connected by Dedicated Assets to one or more Boundary Points of that Interconnector; and
- (c) Interconnector BM Units associated with the same Interconnector where such Interconnector is located at one Site only and other BM Unit(s) connected by Contiguous Assets to one or more Boundary Points of that Interconnector.

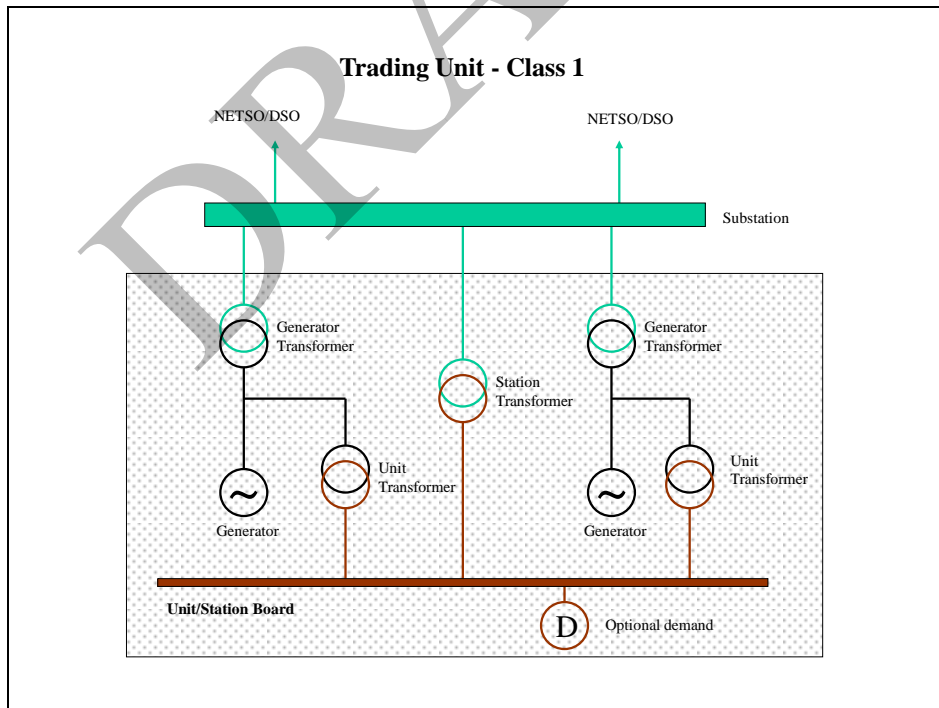
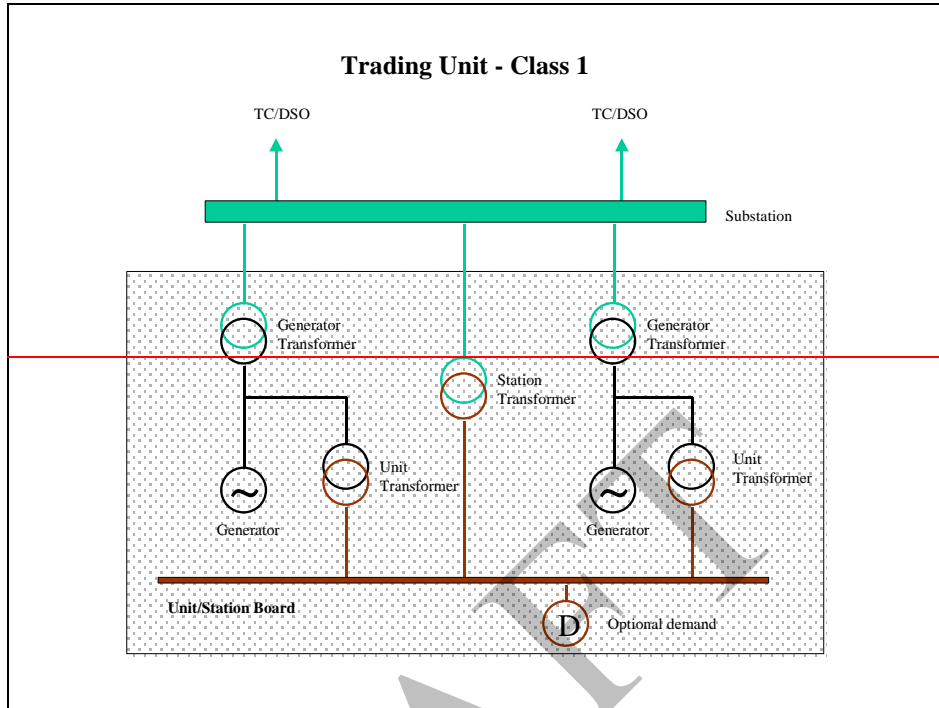
All of the diagrams in this Appendix show typical electrical configurations for different classes of Trading Unit. These diagrams are not exhaustive, but are rather intended to indicate the differences between the various Classes.

A bibliography of previously approved Trading Unit configurations is kept at the BSCCo for provision upon request.

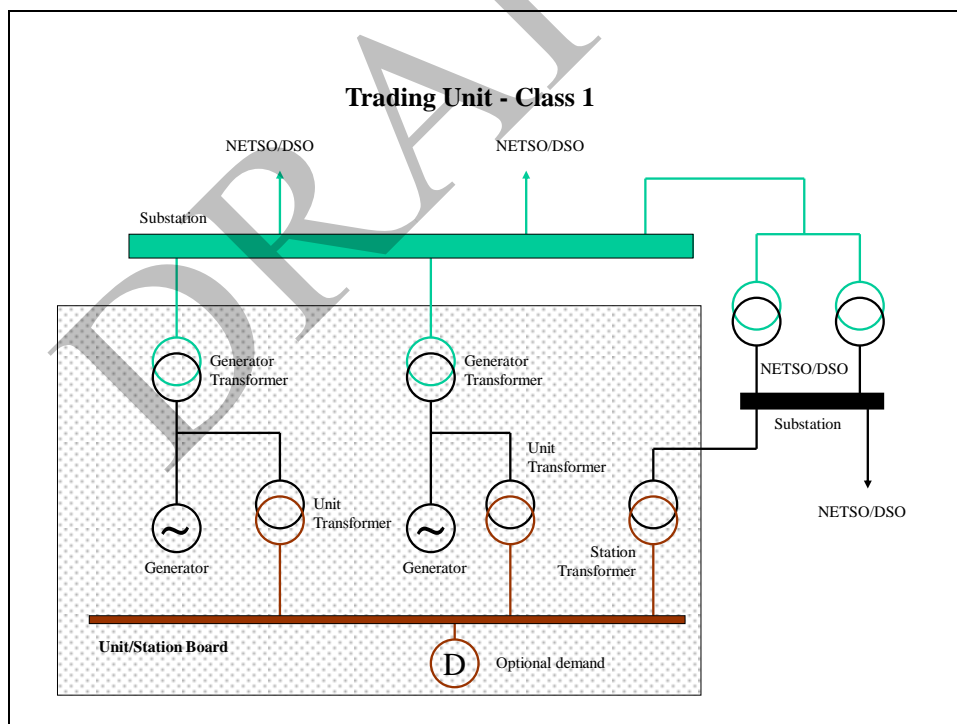
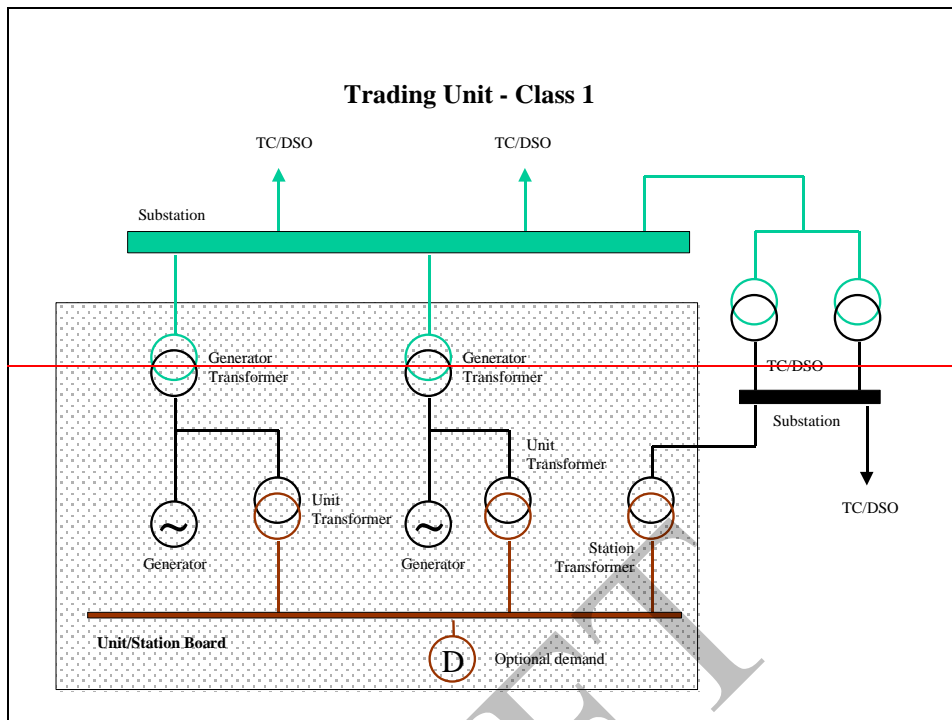
DRAFT

[P369]4.2.1 Power Station with Optional Demand Fed from within the Power Station System

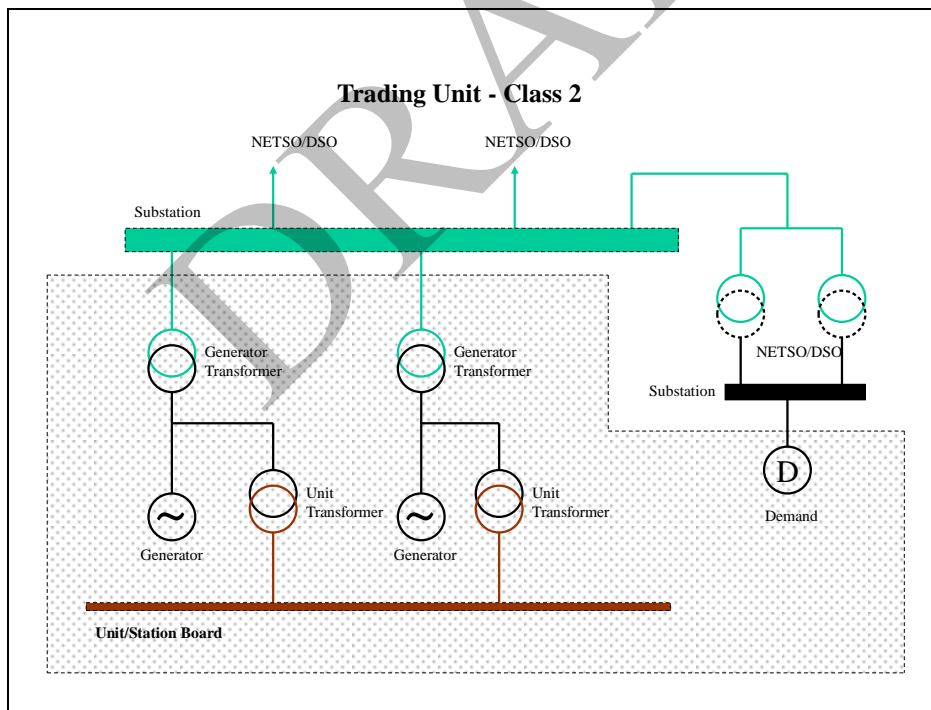
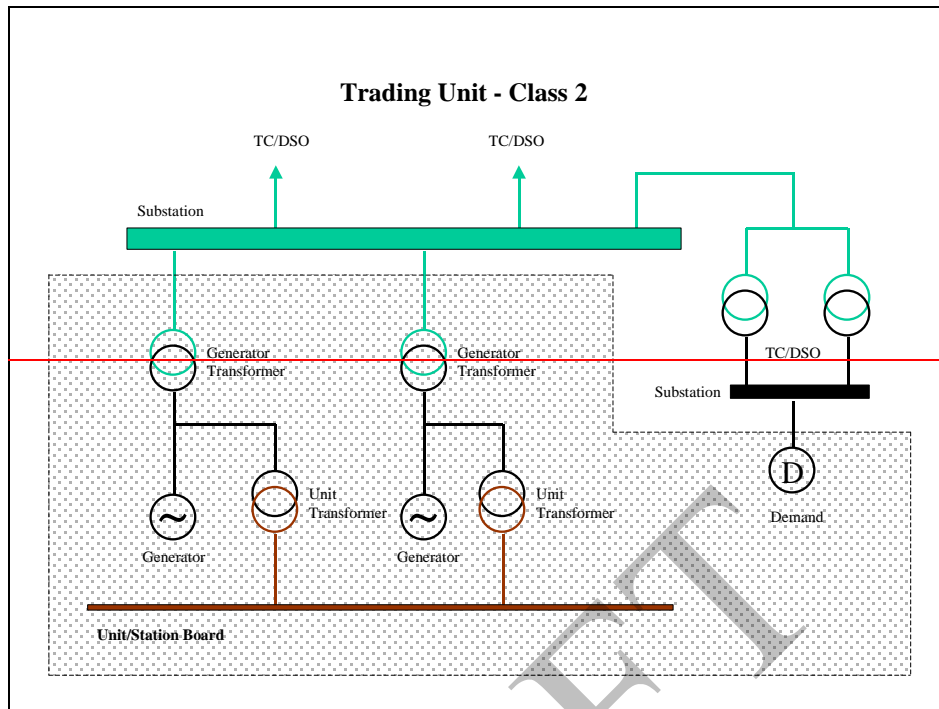
(A)



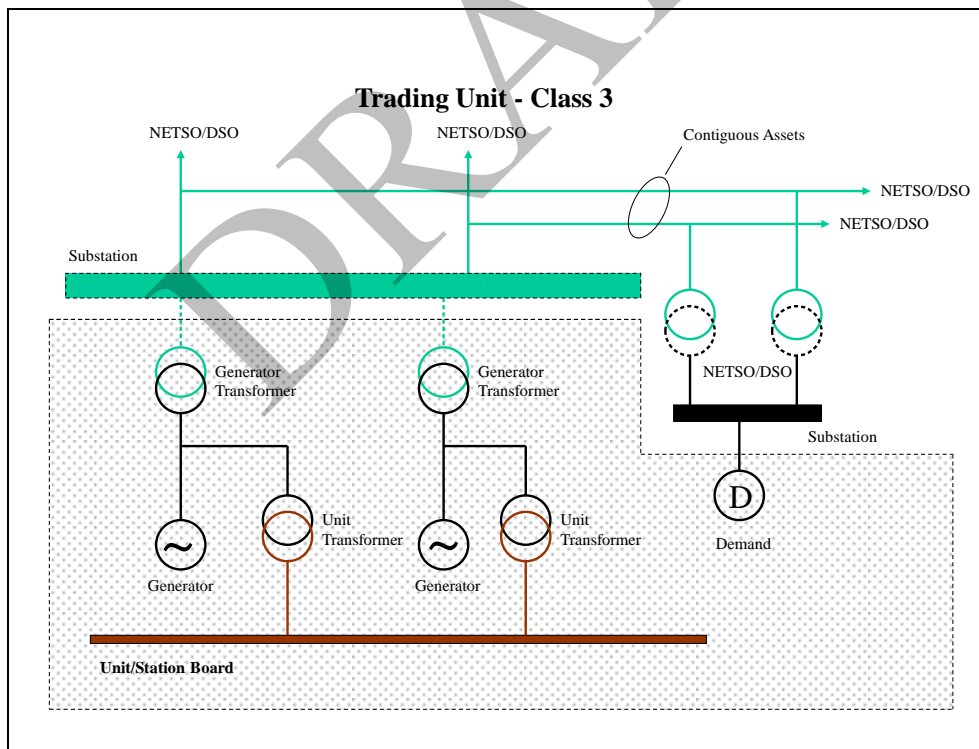
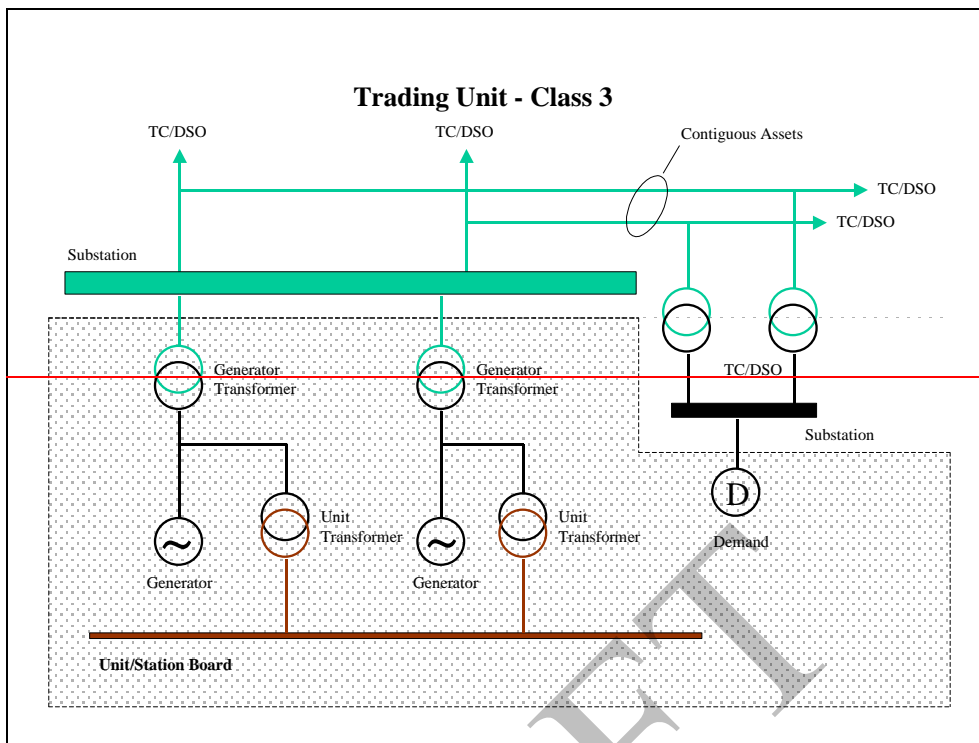
(B)



[P369]4.2.2 Power Station and Demand Connected by Dedicated Assets

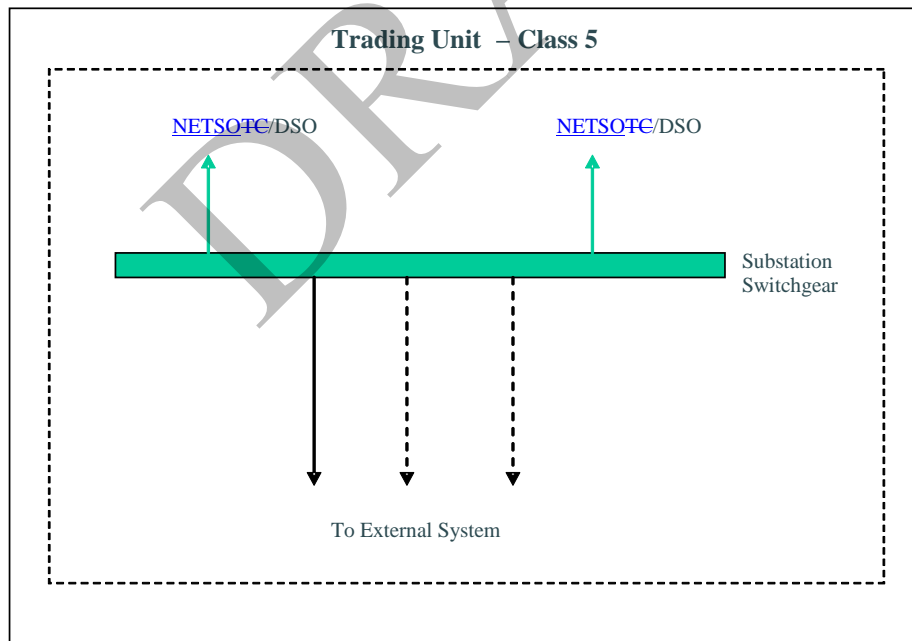
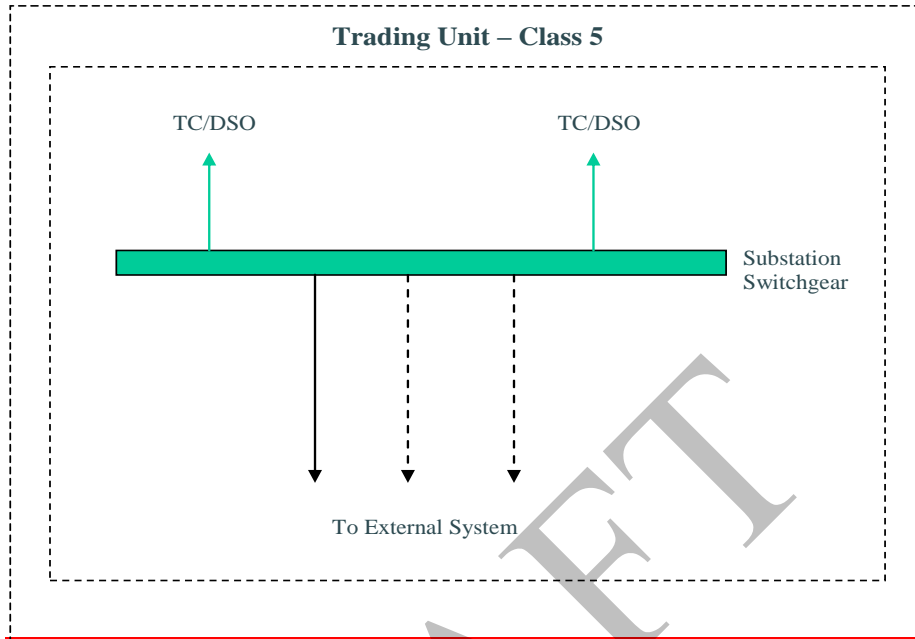


[P369]4.2.3 Power Station and Demand Connected by Contiguous Assets

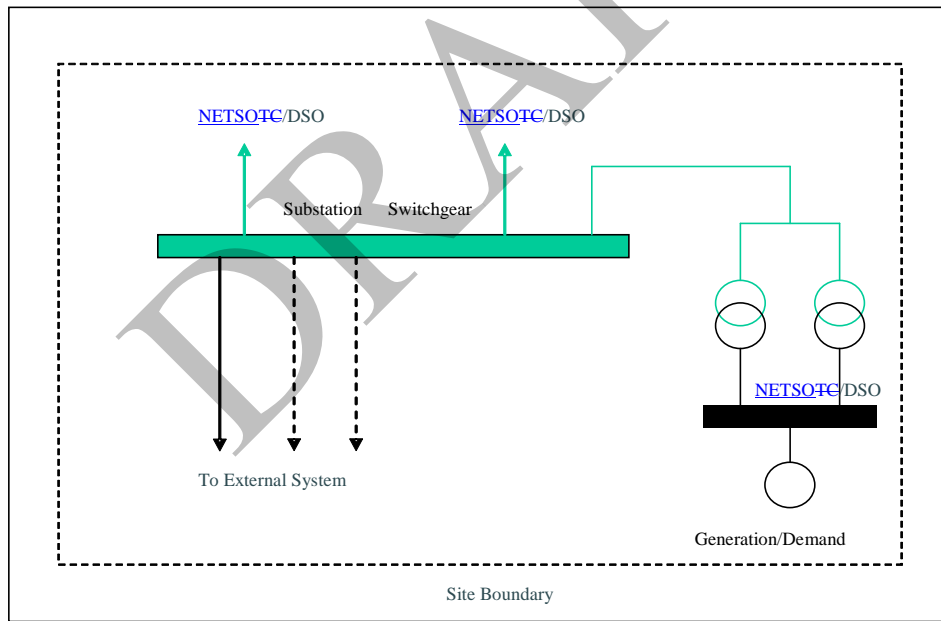
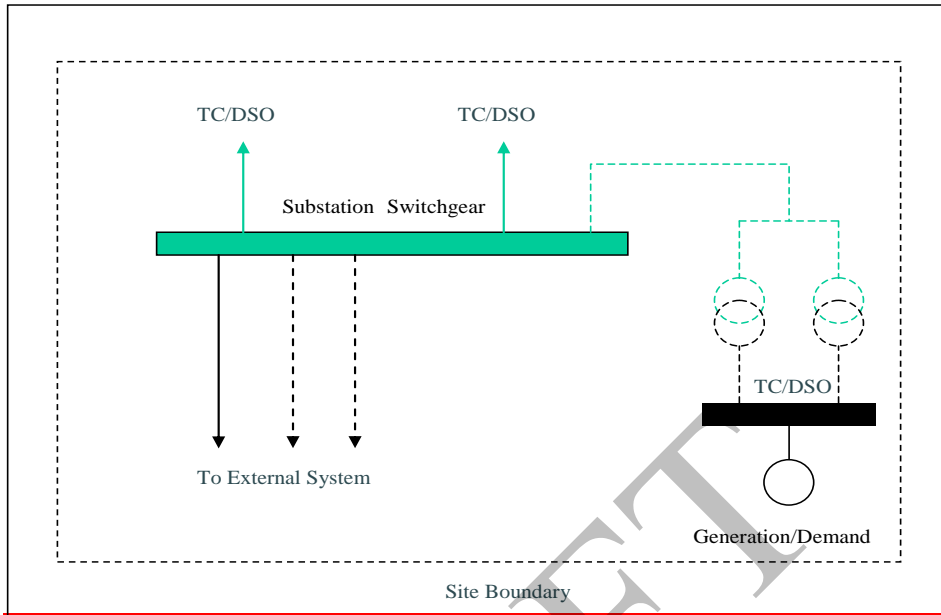


[P369]4.2.4 Interconnectors

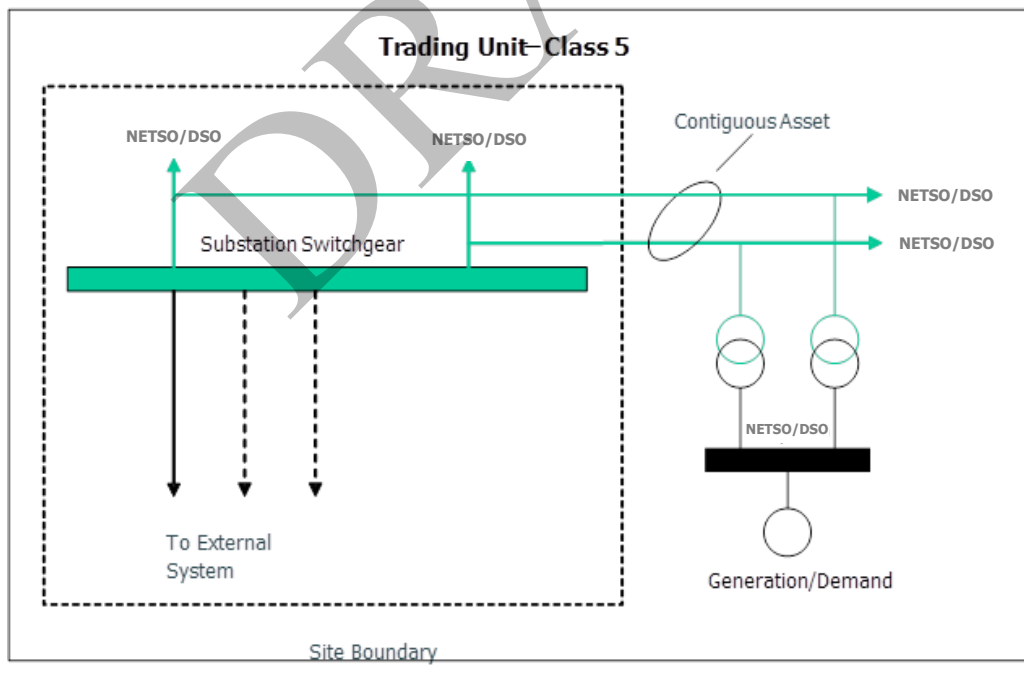
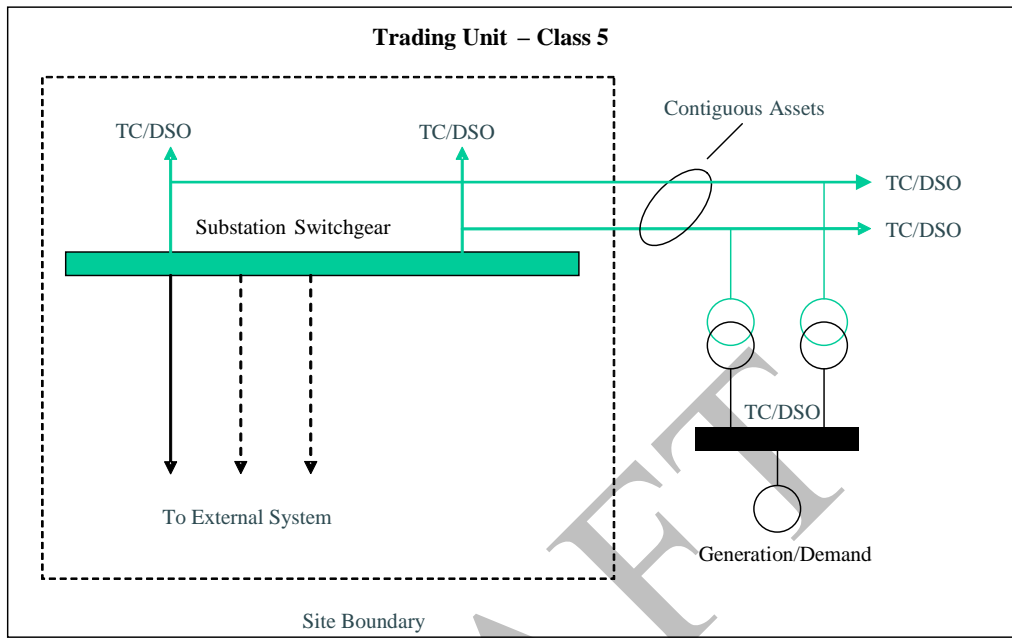
- (A) Interconnector BM Units associated with the same Interconnector where such Interconnector is located at one Site only



[P369](B) Interconnector BM Units associated with the same Interconnector where such Interconnector is located at one Site only and other BM Unit(s) connected by Dedicated Assets to one or more Boundary Points of that Interconnector



[P369](C) Interconnector BM Units associated with the same Interconnector where such Interconnector is located at one Site only and other BM Unit(s) connected by Contiguous Assets to one or more Boundary Points of that Interconnector



[P369]4.3 BSCP31/4.3 Registration of Trading Unit Application Form⁴

PAGE 1 OF 2

| | |
|--|-------------------------|
| To: BSCCo/CRA | Date Sent: _____ |
| From: Participant Details | |
| Party ID: _____ | Name of Sender: _____ |
| Contact email address: _____ | |
| Our Ref: _____ | Contact Tel. No. _____ |
| Name of Authorised Signatory: _____ | |
| Authorised Signature: _____ | Password: _____ |

Class of Trading Unit Application (1, 2, 3, 5 or 6):

Trading Unit Name: _____

Effective From Date⁵: _____**New Registration****OR****Change of BM Unit Ownership****Attached Documents:**

Full description of nominated BM Unit(s):

(Complete Form BSCP31/4.5)

Confirmation from each Lead Party of their intention to be associated with a single Trading Unit:

Full description of Metering Systems:

Full description of points of measurement of electrical flow:

Line diagrams showing electrical connections and energy flows at nominated BM Unit(s):

Line diagrams showing location of Metering Systems:

⁴ This process shall not apply where a Trading Unit is being transferred from one Party to another as part of the CVA BM Unit CoBO process (providing no other changes are being made to the registration data associated with the BM Units). Please refer to the 'Change of CVA BM Unit Ownership' process in BSCP15 which defines the process for transferring the ownership of Trading Units in such circumstances.

⁵ The Trading Unit Effective From Date will be the later of either the date specified in this section of the application form by the Applicant Party, or the date on which all of the requirements specified in this procedure have been satisfied.

Evidence that assets & equipment are capable of transmitting or distributing the quantity of Electricity to be transmitted or distributed at the nominated BM Unit(s):

Confirmation from the ~~Transmission Company~~ NETSO that the metering arrangements are compatible.

Supporting evidence from associated BSC Parties (as appropriate):

Class 2 only

Evidence of Dedicated Assets:

Class 3 only

Evidence of Contiguous Assets:

Class 5 only

Evidence that Interconnector BM Units are associated with the same Interconnector where such Interconnector is located at one Site only:

Evidence that Interconnector BM Units are associated with the same Interconnector where such Interconnector is located at one Site only and other BM Unit(s) connected by Dedicated Assets to one or more Boundary Points of that Interconnector:

Evidence that Interconnector BM Units are associated with the same Interconnector where such Interconnector is located at one Site only and other BM Unit(s) connected by Contiguous Assets to one or more Boundary Points of that Interconnector:

Class 6 only

Other evidence having regard to the criteria set out in BSC:

Please list:

Further evidence requested by the Panel

Please List:

4.4 BSCP31/4.4 Registration of Trading Unit Class 4 Application Form

PAGE 1 OF 1

| | |
|--|-------------------------|
| To: BSCCo/CRA | Date Sent: _____ |
| From: Participant Details | |
| Party ID: _____ | Name of Sender: _____ |
| Participation Capacity: _____ | Supplier _____ |
| Contact email address: _____ | |
| Our Ref: _____ | Contact Tel. No. _____ |
| Name of Authorised Signatory: _____ | |
| Authorised Signature: _____ | Password: _____ |

Class of Trading Unit: 4

Trading Unit Name: _____

GSP Group ID: _____

Confirmation that all the nominated BM Units are Embedded Exempt Export BM Units located in the same GSP Group (please tick): Trading Unit Effective From Date⁶: _____**Attached Documents:**Full description of nominated BM Unit(s): *(Complete Form BSCP31/4.5)*Confirmation from each Lead Party of their intention to be associated with a single Trading Unit, noting that such confirmation is an explicit authorisation from each Lead Party to remove the specified Exempt Export BM Unit(s) from their Sole or Base Trading Unit, as the case may be. Any further information to support the Application:

⁶ The Trading Unit Effective From Date will be the later of either the date specified in this section of the application form by the Applicant Party, or the date on which all of the requirements specified in this procedure have been satisfied.

4.5 BSCP31/4.5 Registration of Trading Unit Details Form

PAGE 1 OF 1

| | |
|--|-------------------------|
| To: BSCCo | Date Sent: _____ |
| From: Participant Details | |
| Party ID: _____ | Name of Sender: _____ |
| Contact email address: _____ | |
| Our Ref: _____ | Contact Tel. No. _____ |
| Name of Authorised Signatory: _____ | |
| Authorised Signature: _____ | Password: _____ |

| | |
|-----------------------------|-------------------------|
| Trading Unit Details | |
| Trading Unit Name: | |
| BM Unit Details: | BM Unit Details: |
| BM Unit ID | BM Unit ID |
| Effective from Date: | Effective from Date: |
| Effective to Date: | Effective to Date: |
| BM Unit Details: | BM Unit Details: |
| BM Unit ID | BM Unit ID |
| Effective from Date: | Effective from Date: |
| Effective to Date: | Effective to Date: |
| BM Unit Details: | BM Unit Details: |
| BM Unit ID | BM Unit ID |
| Effective from Date: | Effective from Date: |
| Effective to Date: | Effective to Date: |
| BM Unit Details: | BM Unit Details: |
| BM Unit ID | BM Unit ID |
| Effective from Date: | Effective from Date: |
| Effective to Date: | Effective to Date: |

4.6 BSCP31/4.6 De-Register Trading Unit⁷

PAGE 1 OF 1

For Class 4 Trading Units, Attachment BSCP31 / 4.6A must be completed for all Exempt Export BM Units in the Trading Unit, by each Lead Party specifying the allocation of each Exempt Export BM Unit to either the Base Trading Unit, or a Sole Trading Unit on de-registration of the Class 4 Trading Unit.

| | |
|--|-------------------------|
| To: BSCCo/CRA | Date Sent: _____ |
| From: Participant Details | |
| Party ID: _____ | Name of Sender: _____ |
| Contact email address: _____ | |
| Our Ref: _____ | Contact Tel. No. _____ |
| Name of Authorised Signatory: _____ | |
| Authorised Signature: _____ | Password: _____ |

Trading Unit Name _____

Trading Unit ID (if known): _____

Effective To Date: _____

Authorised
Signature: _____

Date: _____

On behalf of: _____

⁷ This process shall not apply where a Trading Unit is being transferred from one Party to another as part of the CVA BM Unit CoBO process (providing no other changes are being made to the registration data associated with the BM Units). Please refer to the 'Change of CVA BM Unit Ownership' process in BSCP15 which defines the process for transferring the ownership of Trading Units in such circumstances.

Attachment BSCP31 / 4.6A, to Form BSCP31 / 4.6 'De-Register Trading Unit'

The following should be completed for each Exempt Export BM Unit comprising a Class 4 Trading Unit being de-registered under BSCP31, using Form BSCP31 / 4.6

Failure to complete this attachment, for any BM Unit in such Class 4 Trading Unit, is taken as authorisation to allocate that BM Unit to the Base Trading Unit for the relevant GSP Group on de-registration of the Class 4 Trading Unit.

The allocation set out below will be contiguous with the de-registration set out on the main form.

Class 4 Trading Unit Name:

Trading Unit Effective to Date:

BM Unit Details:

BM Unit ID

Lead Party

Allocate BM Unit to:

SOLE / BASE* Trading Unit * delete as applicable

Lead Party Authorised Signature

Date

On behalf of:

4.7 BSCP31/4.7 This form is no longer used

4.8 BSCP31/4.8 Amendments to Sole and Base Trading Unit Allocation for Embedded Exempt Export BM Units

| | |
|---|------------------------|
| To: BSCCo CRA | Date Sent: _____ |
| From: Participant Details | |
| Party Id: _____ | Name of Sender: _____ |
| Contact e-mail address: _____ | _____ |
| Our Ref: _____ | Contact Tel. No. _____ |
| Name of Authorised Signatory: _____ | |
| Authorised Signature: _____ | Password: _____ |
| Trading Unit Allocation : SOLE / BASE (delete as applicable) | |
| Effective From Settlement Date: | _____ |
| Effective To Settlement Date: * | _____ * (optional) |

From: BSCCo
CRA

To: Lead Party

Date Sent:

Reason(s) for Rejection:

[P369]4.9 BSCP31/4.9 Notification of Trading Unit approval**PAGE 1 OF 1**

This form is used to notify parties of a Panel decision to approve a Trading Unit application. Panel approval is not required to establish or modify the membership of a Base Trading Unit. This form shall therefore not be used to notify a Party of additions or changes to the membership of a Base Trading Unit.

| | |
|---|-------------------------|
| To: CRA / TCNETSO / Applicant Parties | Date Sent: _____ |
| From: BSCCo | |
| Participant Details | |
| Party ID: _____ | Name of Sender: _____ |
| Contact email address: _____ | |
| Our Ref: _____ | Contact Tel. No. _____ |
| Name of Authorised Signatory: _____ | |
| Authorised Signature: _____ | Password: _____ |

| | |
|--|--|
| Trading Unit Details | |
| Trading Unit Name: | |
| Trading Unit Effective From Date: | |
| Lead Party: | |
| Panel Approval Date | |
| BM Units Contained in the Trading Unit: | |
| BM Unit ID | |
| BM Unit ID | |
| BM Unit ID | |
| BM Unit ID | |
| BM Unit ID | |
| BM Unit ID | |
| BM Unit ID | |
| BM Unit ID | |
| BM Unit ID | |

In accordance with Section K4.3 of the Code, the Panel determined that the BM Units detailed may form the named Trading Unit on the date specified.

Pursuant to Section K of the Balancing & Settlement Code, 'Classification and Registration of Metering Systems and BM Units', the Lead Party of each BM Unit shall notify the BSCCo if there is a change in the circumstances of that BM Unit that may affect its registration within a Trading Unit.