



# Consultation for Allocation of a New Grid Supply Point (GSP) to a GSP Group

## WALP\_B (Walpole) GSP Registration

A consultation document issued on behalf of the Panel

**Date of Issue:** Thursday 7 June 2012

**Responses Due:** 17:00 on Friday 22 June 2012

### Introduction

Section K1.8 of the Code states that the Panel may consider revising the GSPs comprised in a Group of GSPs (including the establishment of a Group of GSPs):

- Where a new GSP Point is commissioned or an existing GSP Point is decommissioned; or
- Where the Panel consider it appropriate to do so.

As part of a 132kV Switchgear change at Walpole S/S, National Grid and the affected LDSOs are taking the opportunity to regularise the connection arrangement whereby supplies to two LDSO Networks are currently the subject of a difference metering scheme. (Metering Dispensation D:106). This involves the registration of a 'new' GSPs, and the eventual de-registration of existing Distribution System Connection Point II\_WALPB1.

Appendix A shows the 'before' and 'after' scenarios.

The Transmission Company propose that GSP WALP\_B is allocated to the East Midlands (\_B) GSP Group.

### Points that the Panel may consider when allocating new GSPs to GSP Groups

Section K1.8.3 of the Code states that the GSPs to be comprised in a Group of GSPs must be determined by the Panel with regard, among other things:

- a) The effect of geographic factors in establishing Daily Profile Coefficients in relation to a GSP Group for the purposes of Supplier Volume Allocation;



# GSP Consultation

- b) The effect of the size of a GSP Group (that is the numbers of Half Hourly and Non Half Hourly Metering Systems at Boundary Points in the GSP Group) on GSP Group Correction Factors for the purposes of Supplier Volume Allocation; and
- c) The effect of the proximity (in terms of electrical connection) of Boundary Points on the value to the Transmission Company (in the operation of the Transmission Company) of Physical Notifications and Bid-Offer Pairs submitted in relation to Supplier BM Units.

Please note that the Panel has delegated its authority in determining GSP allocations to the Supplier Volume Allocation Group (SVG).

## **Respondents' views are sought on these factors when assessing the WALP\_B GSP Registration.**

Prior to the SVG making any revision of the Grid Supply Points to be comprised in a Group of GSPs, the Code requires the Panel to consult with the Authority, the Transmission Company, the Licensed Distribution System Operators comprised or to be comprised in relevant GSP Groups and all Suppliers (Section K1.8.4 of the Code).

## **Consultation**

ELEXON has received notification of a new GSP registration application from the Transmission Company. The following GSP Registration details have been received:

GSP ID	WALP_B
GSP Name	Walpole GSP (additional)
Address	Walpole Bank, Walpole St Andrews, Near Wisbeach, Cambridgeshire PE14 7JE
LDSO to which GSP Connecting	WPD (East Midlands)
Prospective Registrant of the Metering Systems associated with GSP	WPD
Proposed Effective From Date of Registration	27 July 2012

## **Transmission Company's proposal:**

The GSP WALP\_B should be allocated to the East Midlands (\_B) GSP Group because these works and consequent registration changes are being undertaken to regularise an existing situation and the System Connection Points will be to the WPD (East Midlands) Distribution System and replace an existing Distribution System Connection Point.



# GSP Consultation

WPD (East Midlands) demand from Walpole will no longer be subject to netting off from the GSP Metered Volume within the GSP Group aggregation.

You are invited to provide a response in respect of the questions on the attached pro-forma.

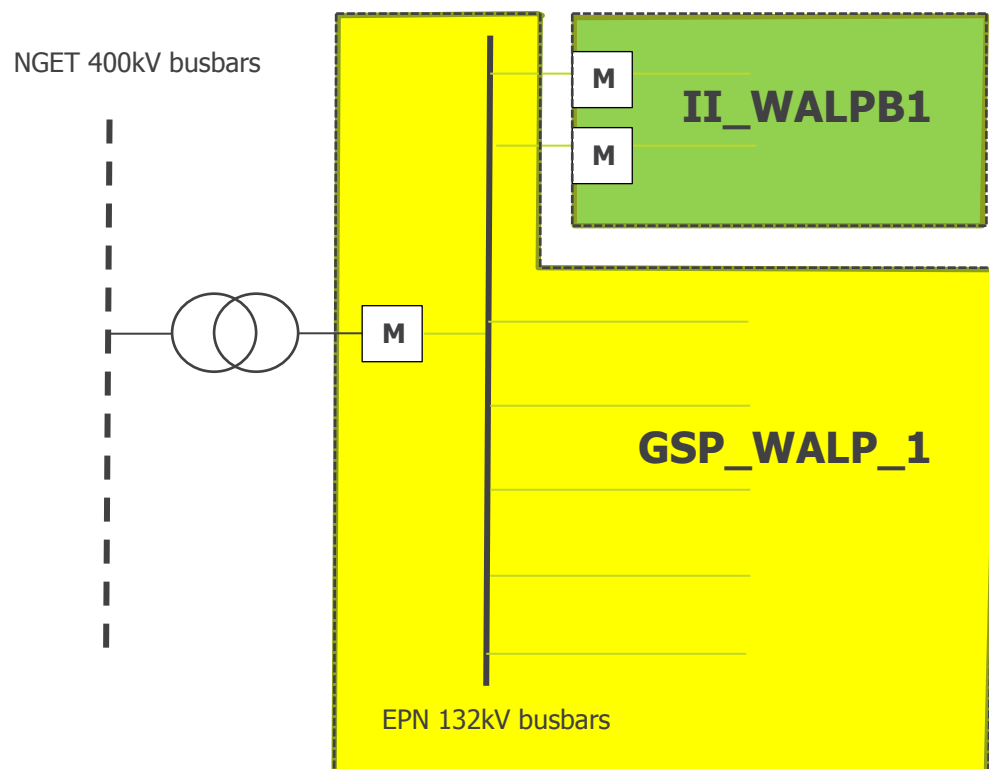
Please send your responses, entitled "Walpole GSP Registration Consultation", to [bm.unit@elexon.co.uk](mailto:bm.unit@elexon.co.uk) by **17:00 on Friday 22 June 2012**.

If you have any queries on the content of the consultation pro-forma, please contact Sarah Hughes on 020 7380 4205.

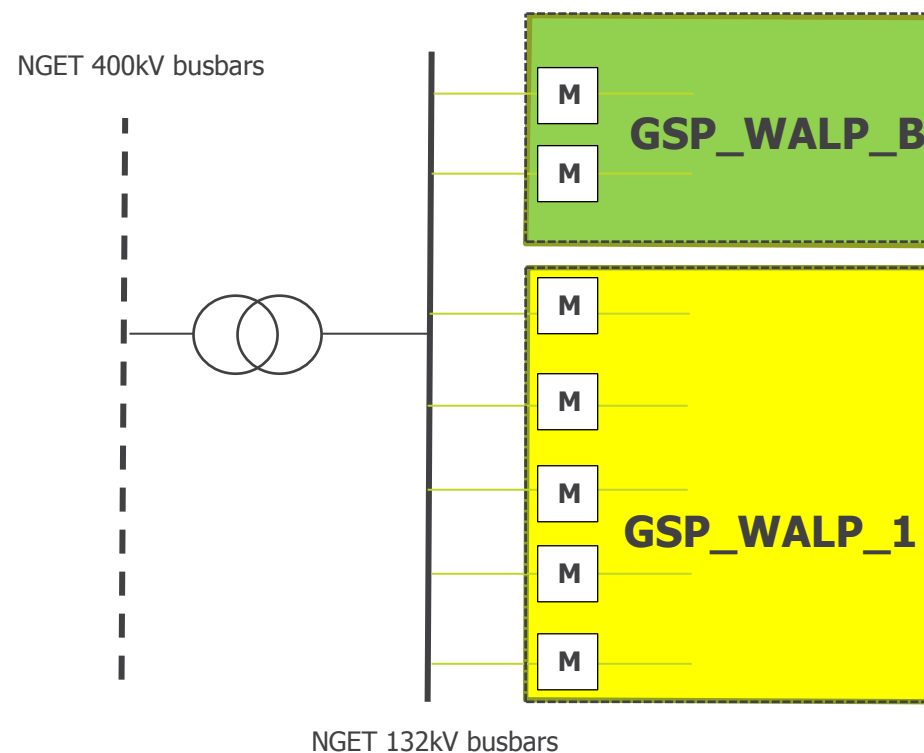
# GSP Consultation

## WALPOLE Settlement Arrangements May 2012

### Appendix A



## WALPOLE Settlement Arrangements post National Grid works



Walpole GSP Registration Consultation 7 June 2012

Note 1 – diagrams shows indicative circuit arrangements only

Note 2 – diagrams shows registration not commercial arrangements

**ELEXON**