

A decorative graphic in the background consists of multiple horizontal, overlapping bars of varying shades of blue and white, creating a sense of depth and movement. The bars are arranged in a way that they appear to be receding into the distance, with some bars being more prominent than others.

Comparison of FPNs to Metered Volumes

- ELEXON
- 2 February 2009

Action summary



- » At the last meeting, ELEXON took an action to compare:
 - Final Physical Notifications (FPNs);
 - Energy Volume Contract Notifications (ECVNs); and
 - Metered Volumes.
- » These slides present the results.

Analysis overview



- » We have compared FPNs to Metered Volumes for:
 - One winter day (Weds 16 January 2008); and
 - One summer day (Weds 16 July 2008).
- » We have looked at:
 - Production BM Units, split by fuel type; and
 - The aggregate of all Consumption accounts for the 2 days.

Analysis results



» Key to graphs:

- Blue bars = FPNs
- Red/purple bars = Metered Volumes
- Black line = % difference between FPNs and Metered Volumes (see right-hand axis)

» We are unable to compare with ECVNs as:

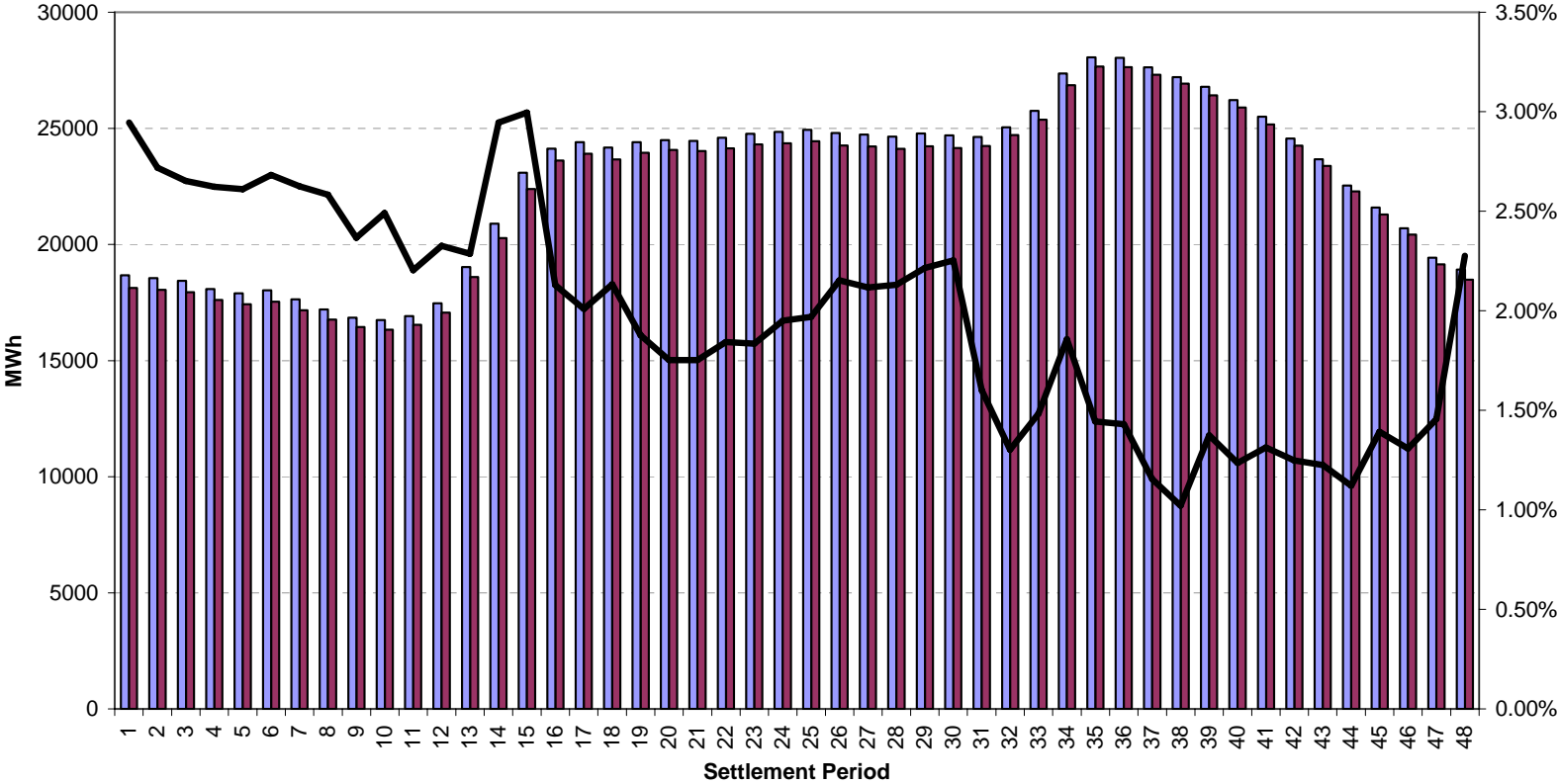
- ECVNs are at a Party ID level (FPNs and Metered Volumes are per BM Unit); and
- FPNs are not submitted for non-physical trades (so will not necessarily match up to ECVNs).



**Winter day –
Wednesday 16 January 2008**

Winter day – all production accounts

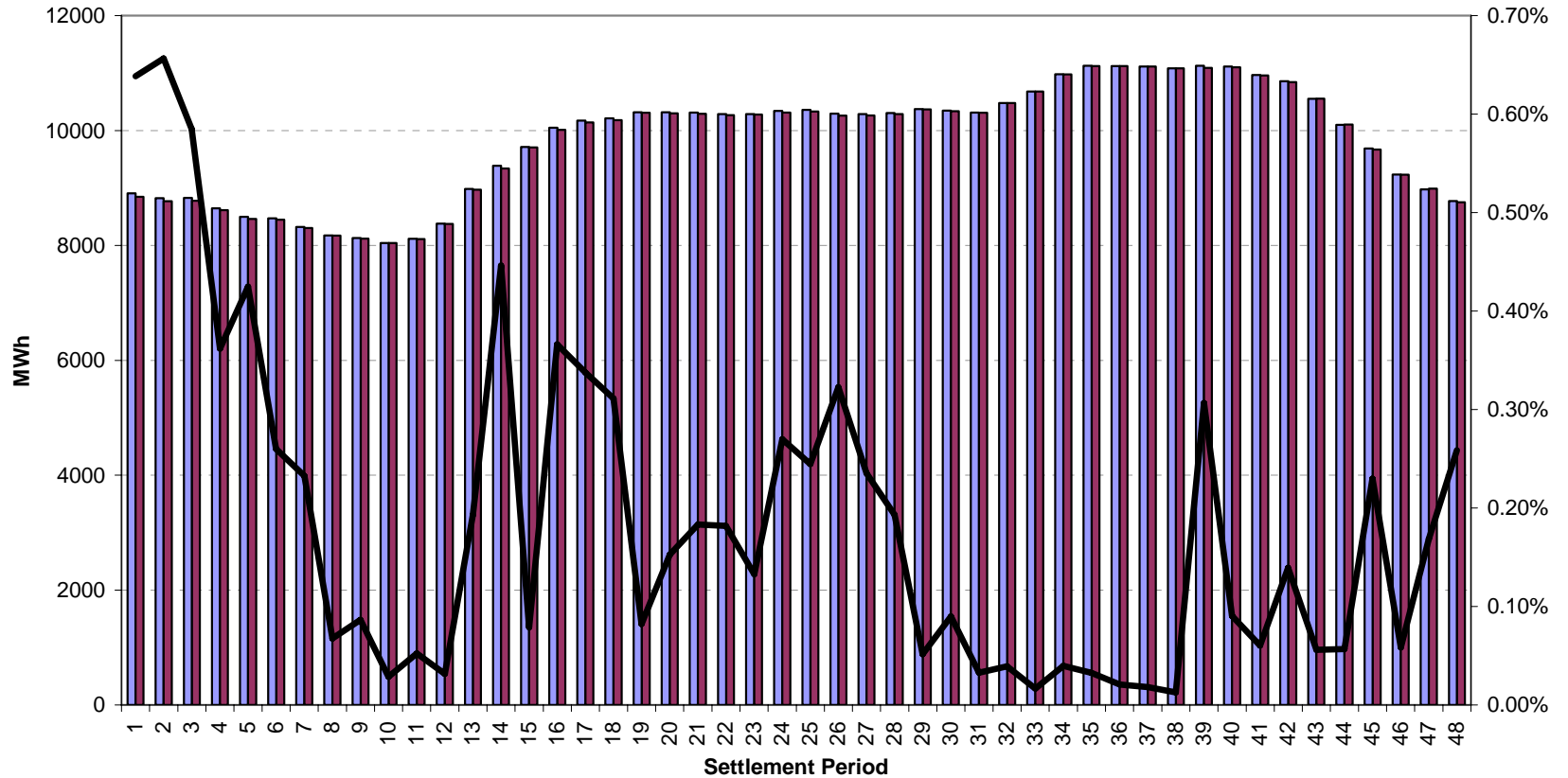
Prod/Cons Status | P | FUEL TYPE | (All) | BMU Type | (All) | Party Name | (All)



Data		
■ Sum of Expected	■ Sum of Metered	— Sum of % Difference
Period		

Winter day – production – CCGT

Prod/Cons Status P FUEL TYPE CCGT BMU Type (All) Party Name (All)



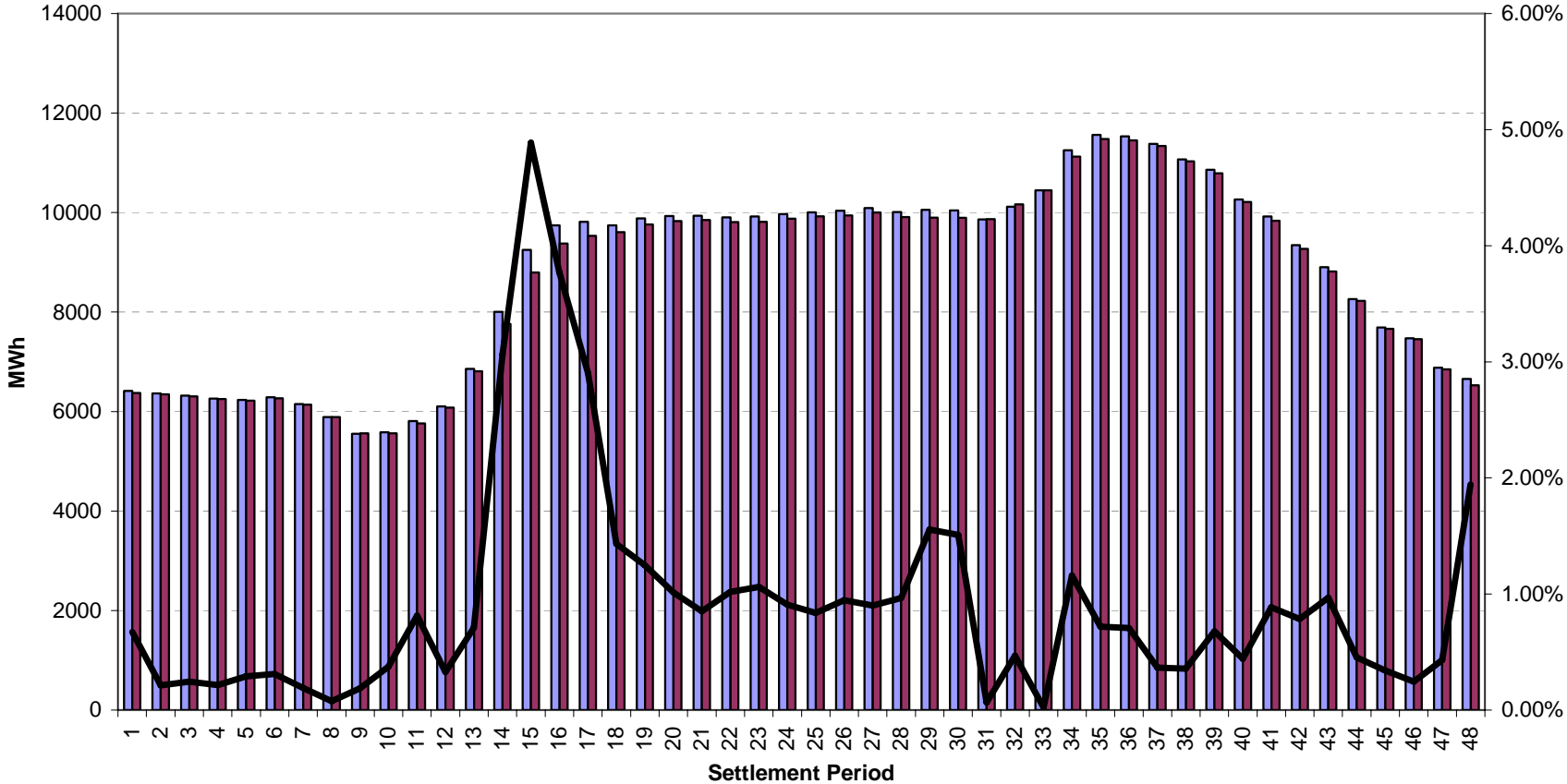
Data

Sum of Expected Sum of Meters Sum of % Difference

Period

Winter day – production – coal

Prod/Cons Status P FUEL TYPE COAL BMU Type (All) Party Name (All)



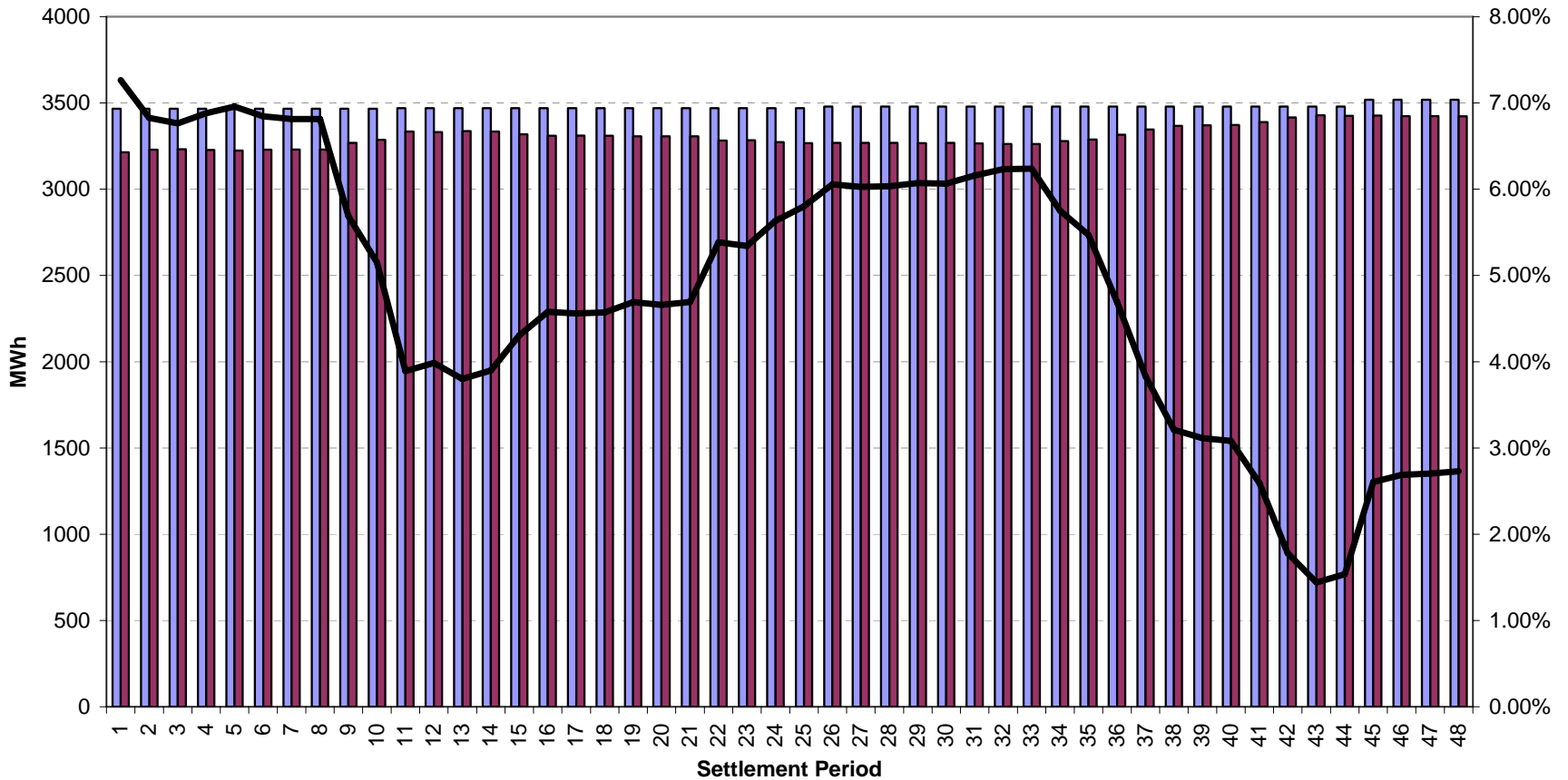
Data

Sum of Expected Sum of Meters Sum of % Difference

Period

Winter day – production – nuclear

Prod/Cons Status P FUEL TYPE NUCLEAR BMU Type (All) Party Name (All)



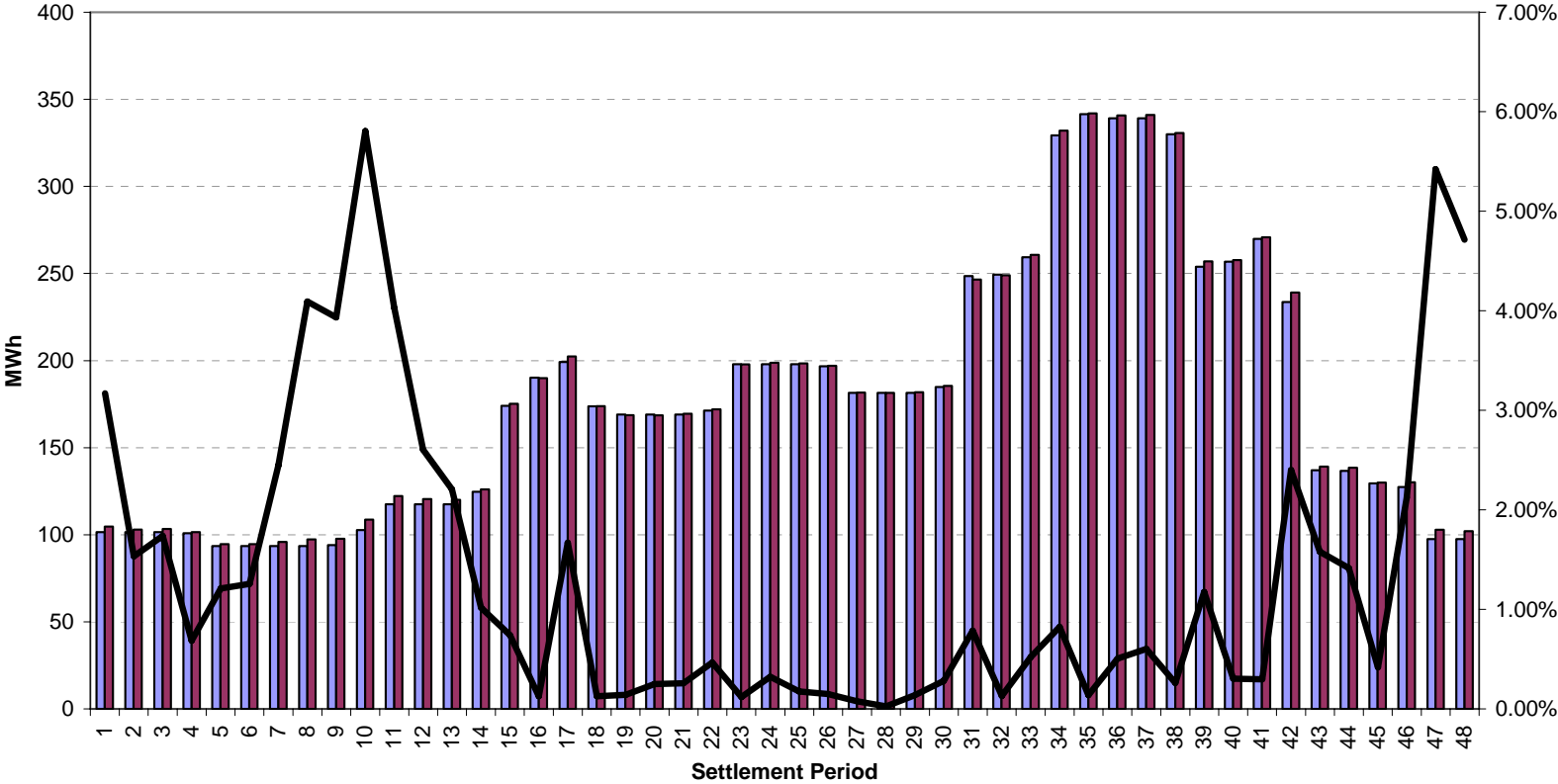
Data

Sum of Expected Sum of Metered Sum of % Difference

Period

Winter day – production – non pumped storage hydro

Prod/Cons Status | P | FUEL TYPE | NPSHYD | BMU Type (All) | Party Name (All)



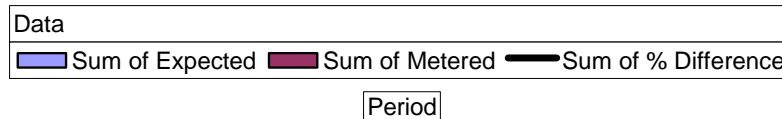
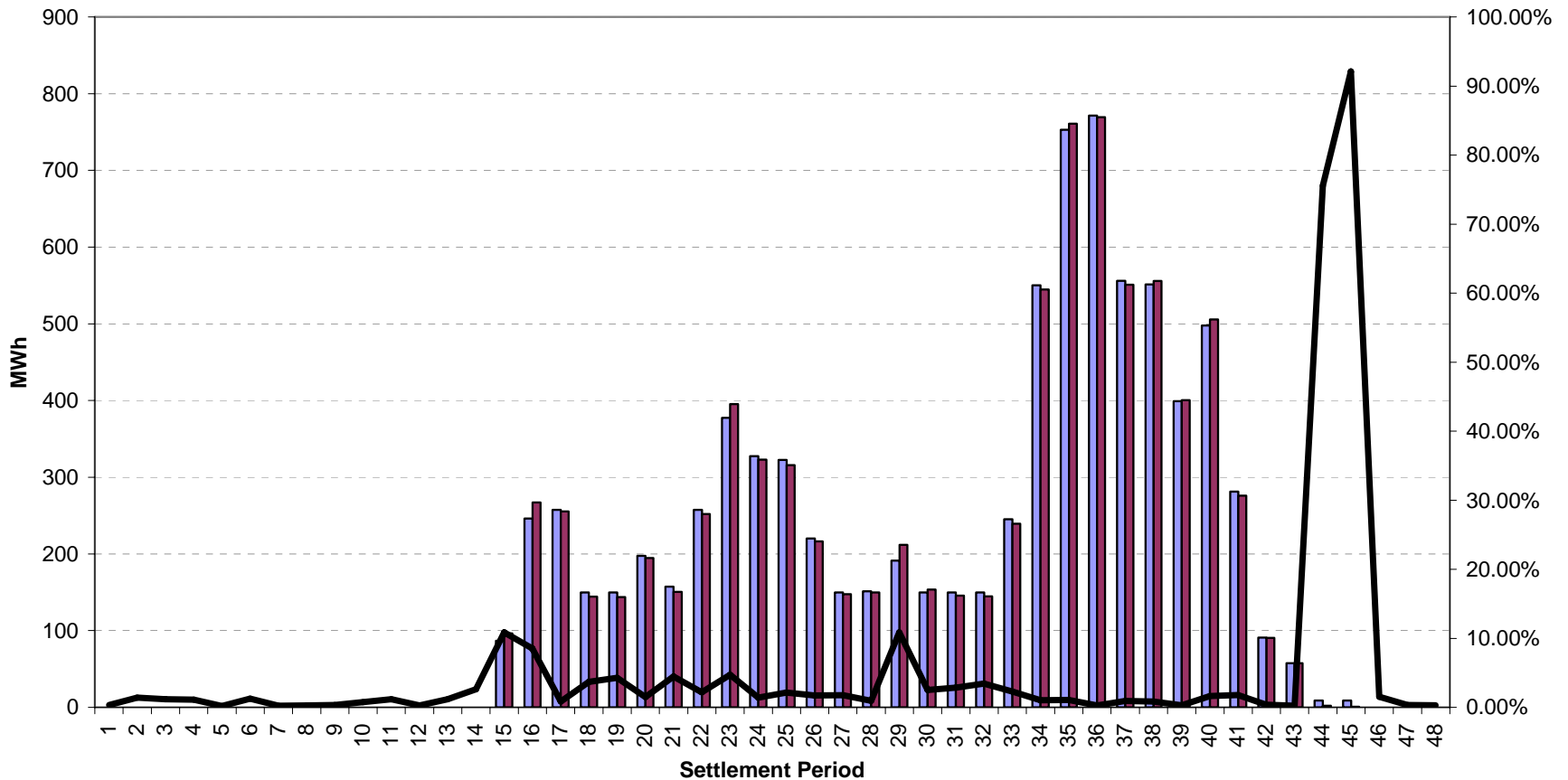
Data

Sum of Expected	Sum of Metered	Sum of % Difference
-----------------	----------------	---------------------

Period

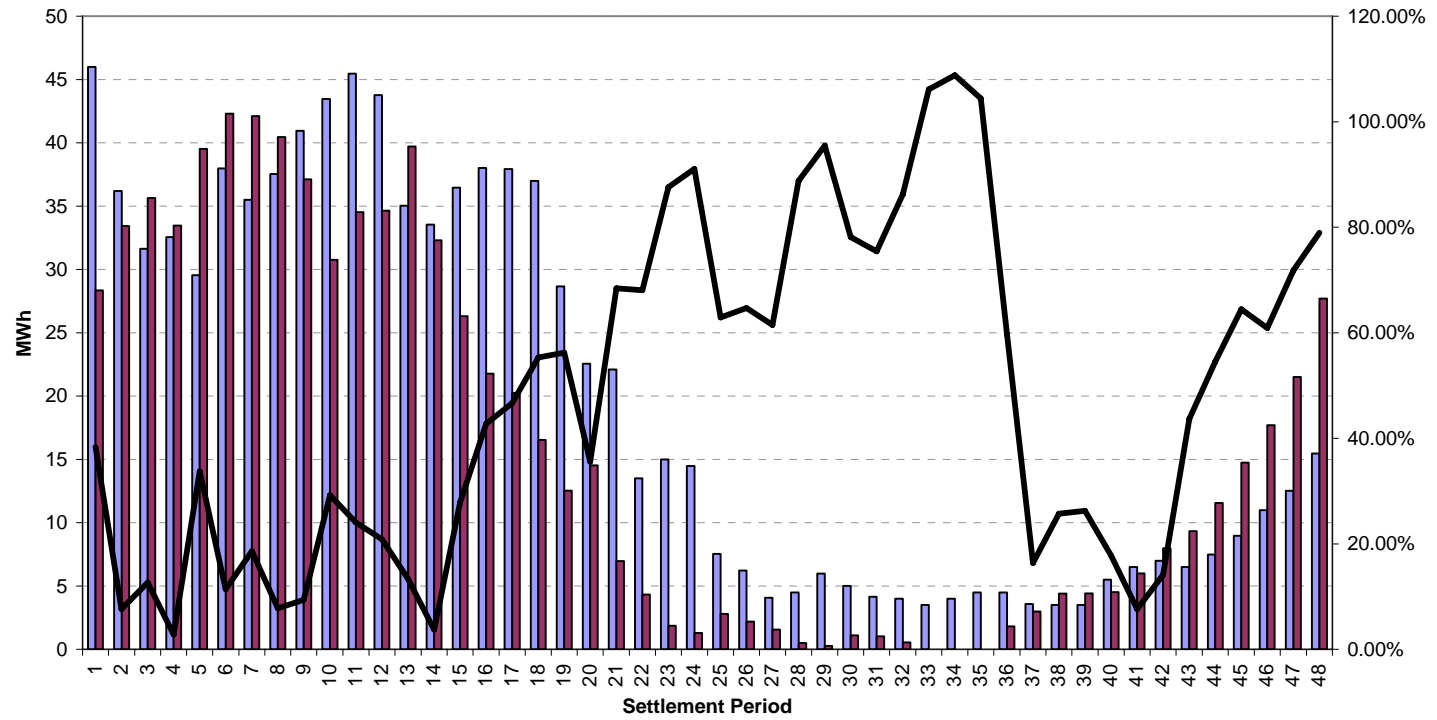
Winter day – production – pumped storage hydro

Prod/Cons Status | P | FUEL TYPE | PS | BMU Type | (All) | Party Name | (All)



Winter day – production – wind

Prod/Cons Status | P | FUEL TYPE | WIND | BMU Type | (All) | Party Name | (All)

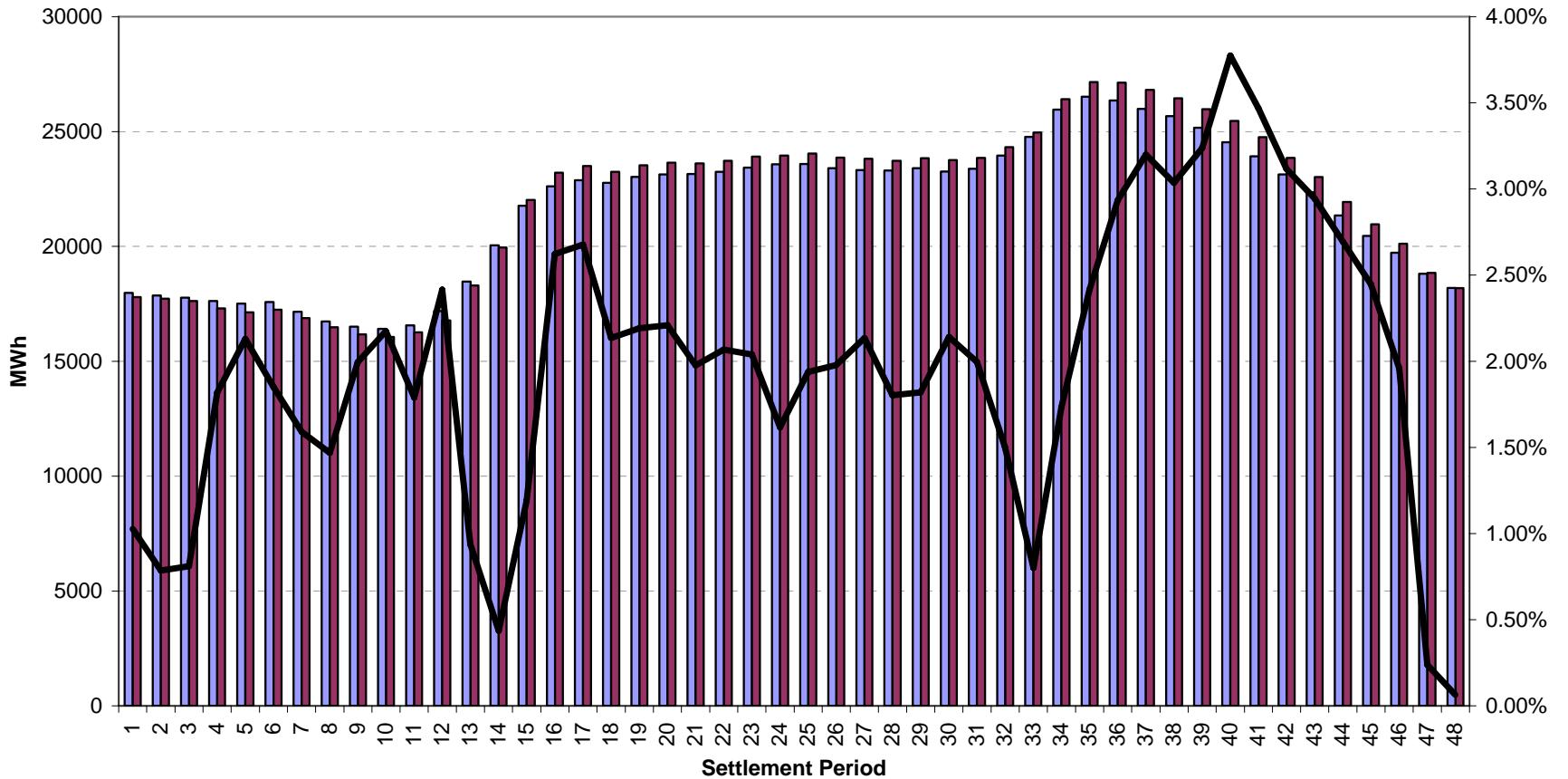


Data
█ Sum of Expected █ Sum of Metered — Sum of % Difference

Period

Winter day – all consumption accounts

Prod/Cons Status C FUEL TYPE (All) BMU Type (All) Party Name (All)



Data
Sum of Abs Expected Sum of Abs Metered Sum of % Difference

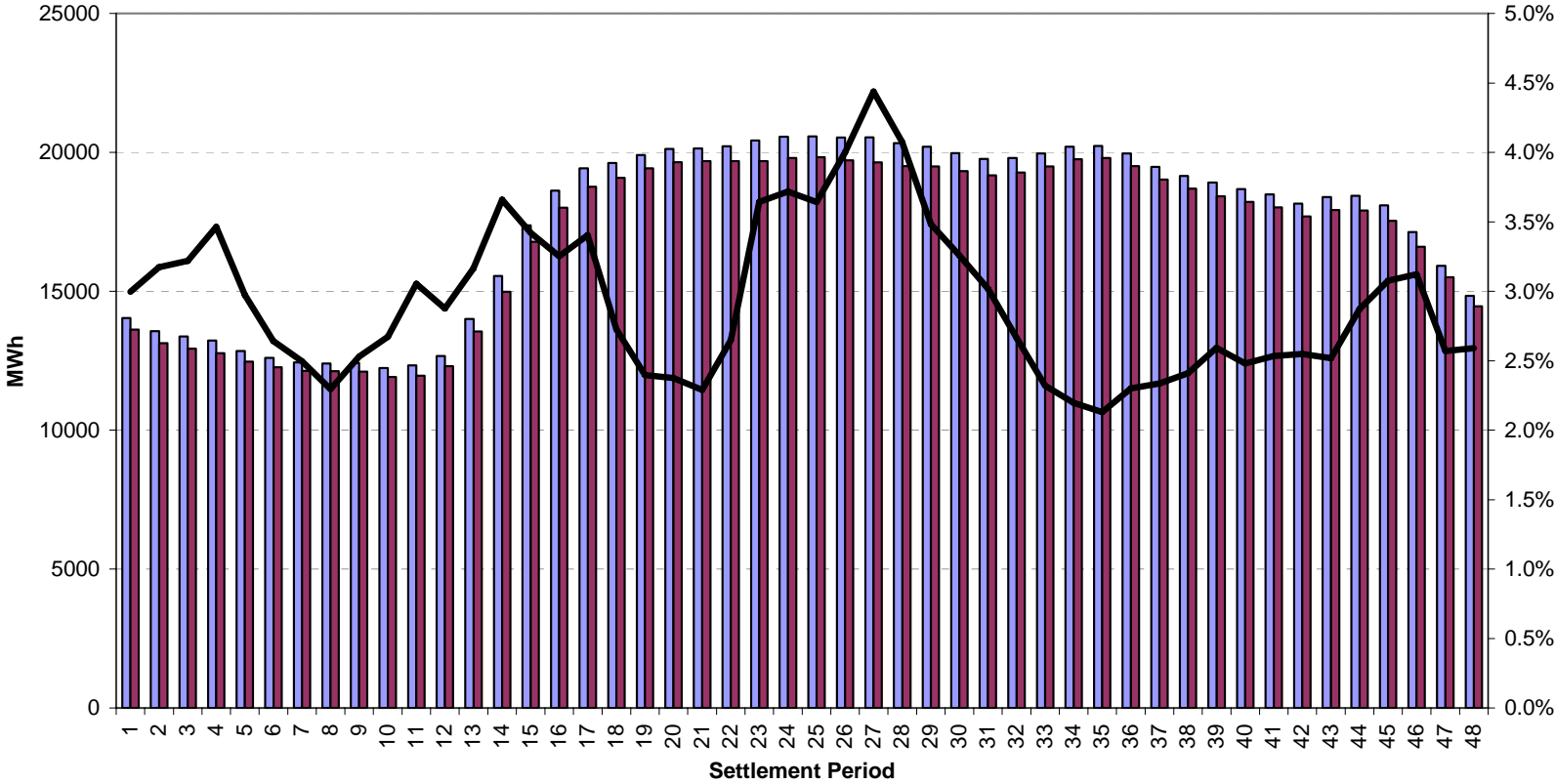
Period



**Summer day –
Wednesday 16 July 2008**

Summer day – all production accounts

Prod/Cons Status | P | FUEL TYPE | (All) | BMU Type | (All) | Party Name | (All)



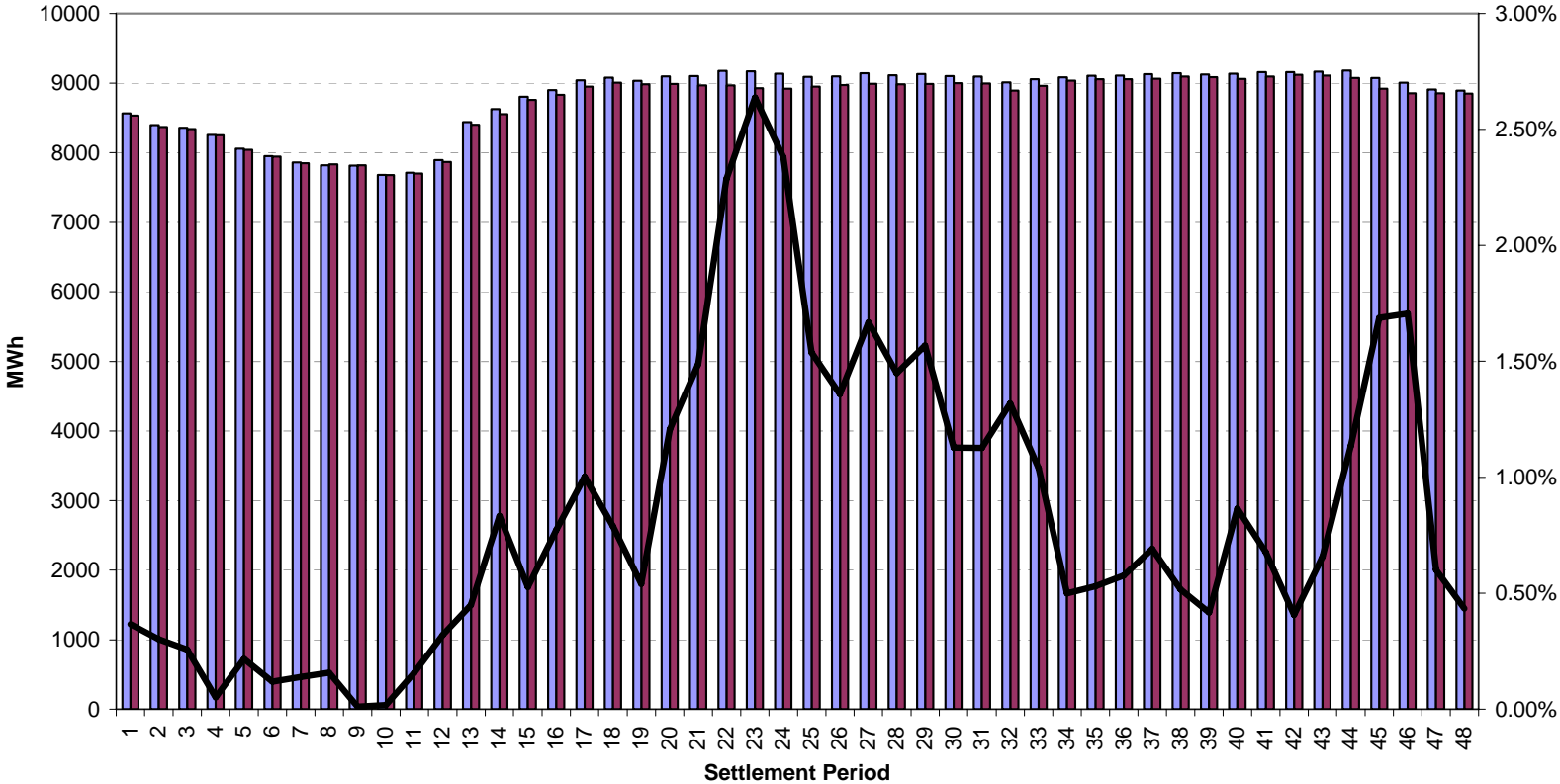
Data

■ Sum of Expected
 ■ Sum of Metered
 — Sum of % Difference

Period

Summer day – production – CCGT

Prod/Cons Status | P | FUEL TYPE | CCGT | BMU Type | (All) | Party Name | (All)



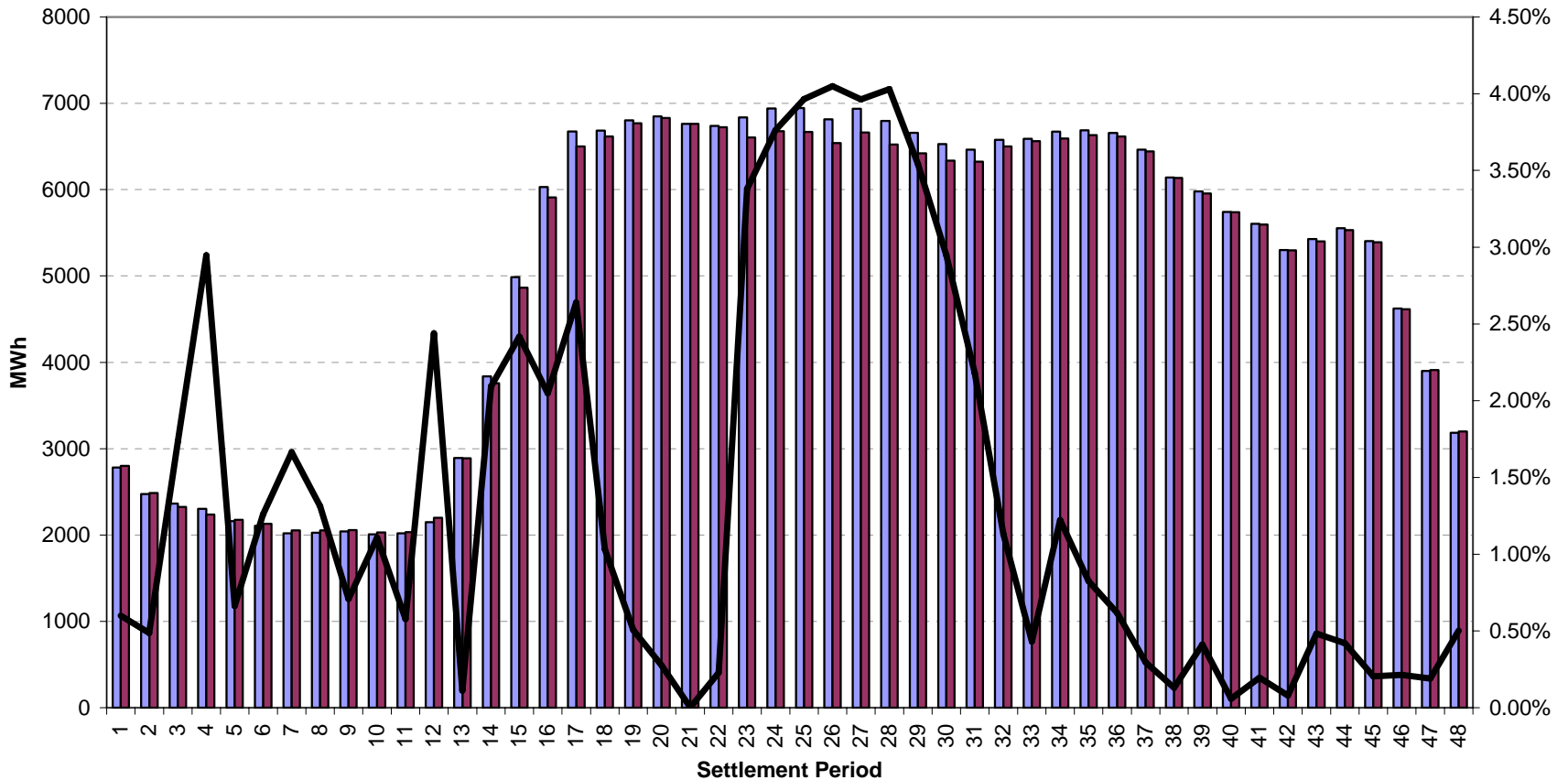
Data

Sum of Expected Sum of Meters Sum of % Difference

Period

Summer day – production – coal

Prod/Cons Status P FUEL TYPE COAL BMU Type (All) Party Name (All)



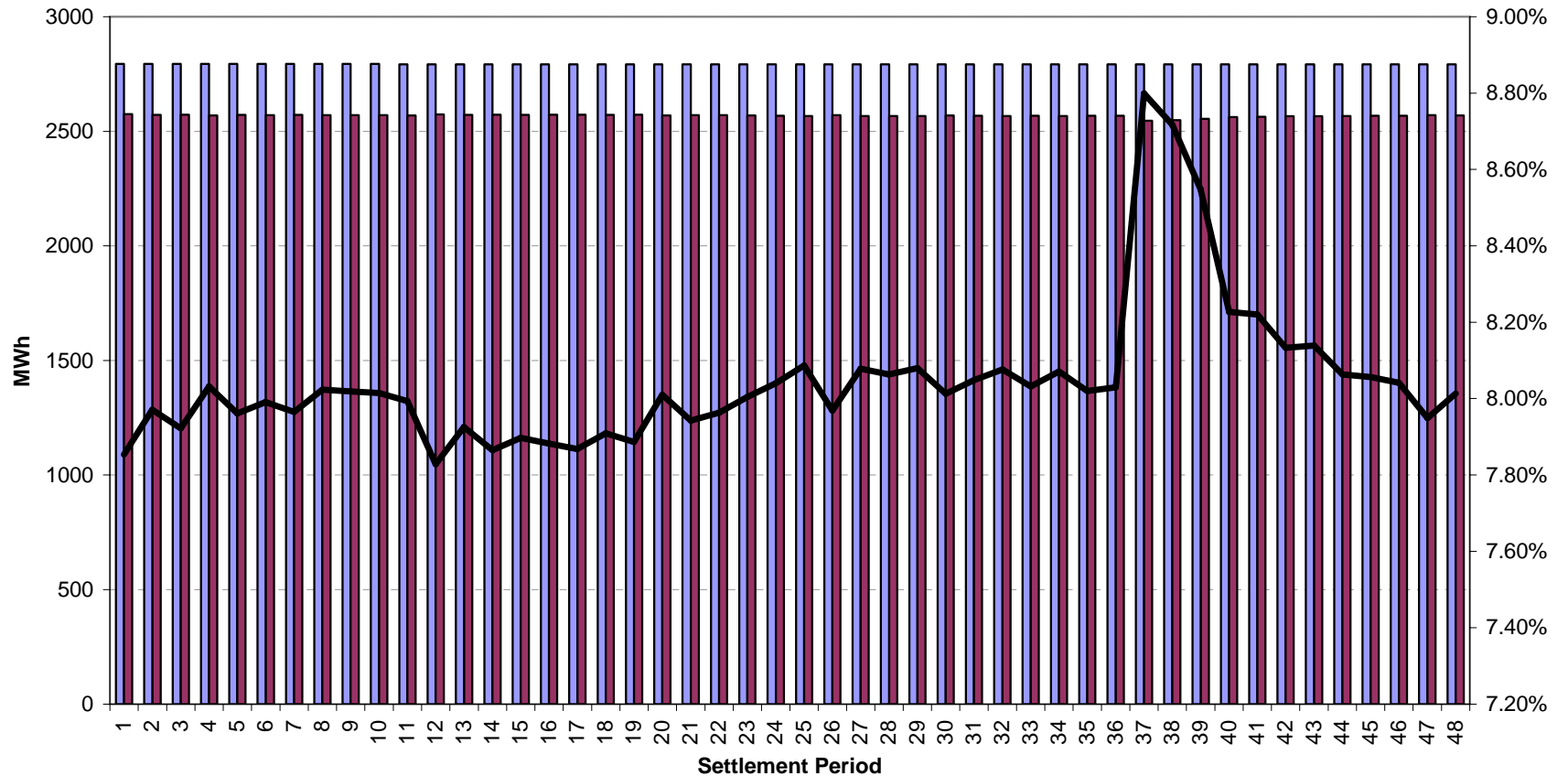
Data

■ Sum of Expected
 ■ Sum of Metered
 — Sum of % Difference

Period

Summer day – production – nuclear

Prod/Cons Status P FUEL TYPE NUCLEAR BMU Type (All) Party Name (All)



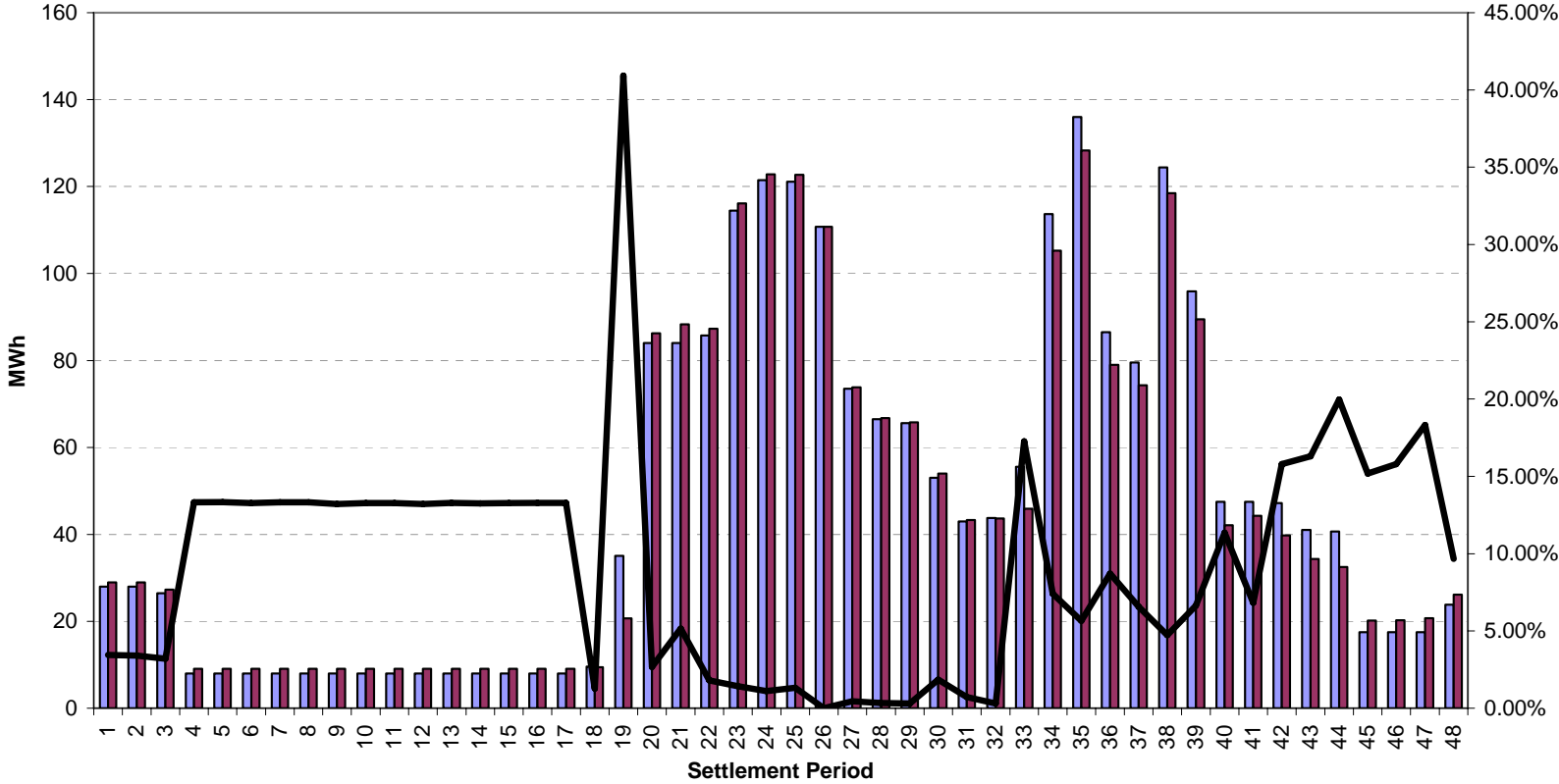
Data

■ Sum of Expected
 ■ Sum of Metered
 — Sum of % Difference

Period

Summer day – production – non pumped storage hydro

Prod/Cons Status P|FUEL TYPE|NPSHYD|BMU Type|(All)|Party Name|(All)



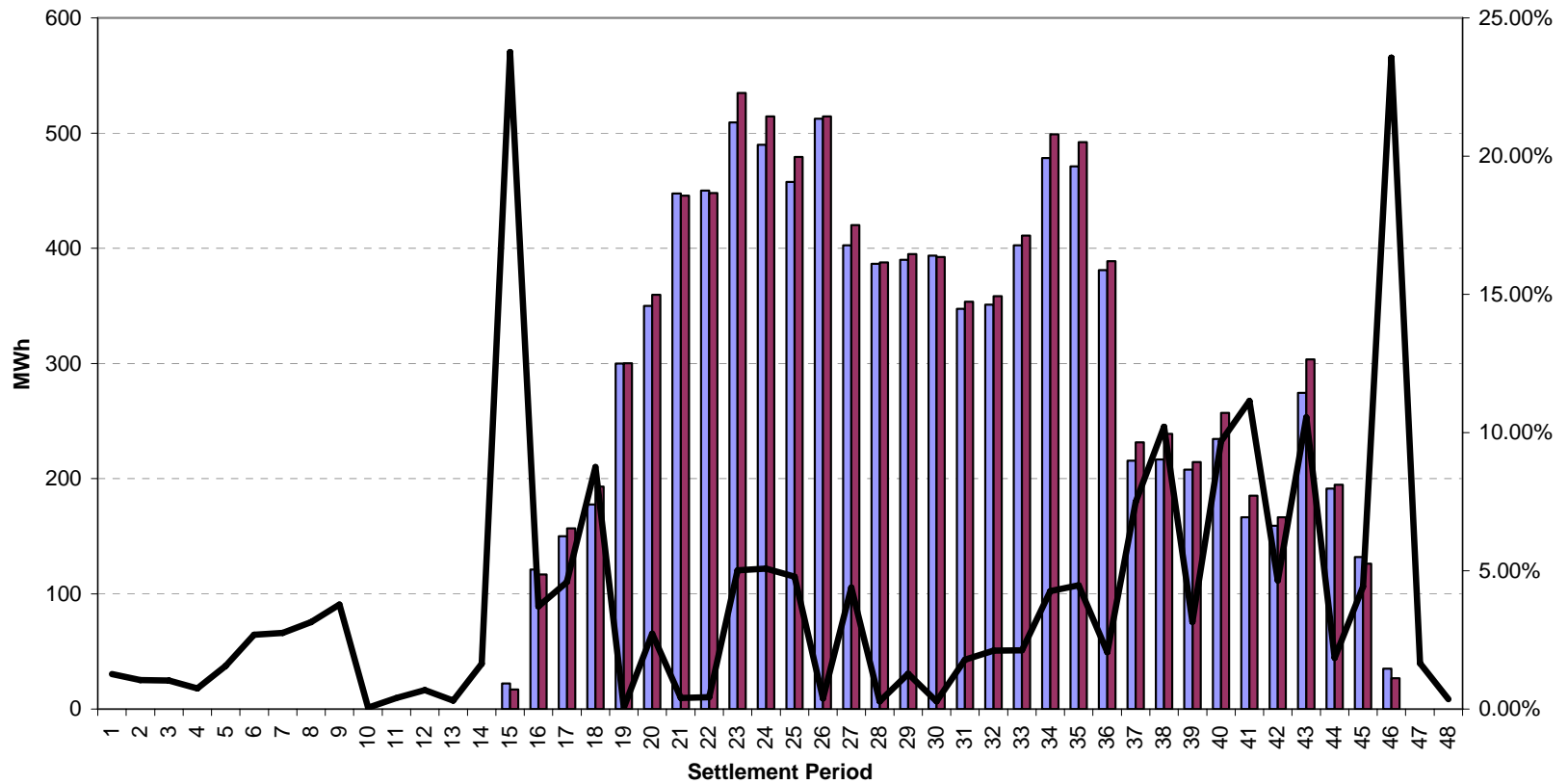
Data

- Sum of Expected
- Sum of Metered
- Sum of % Difference

Period

Summer day – production – pumped storage hydro

Prod/Cons Status P FUEL TYPE PS BMU Type (All) Party Name (All)



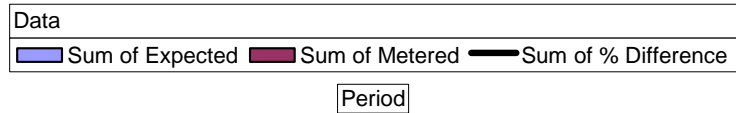
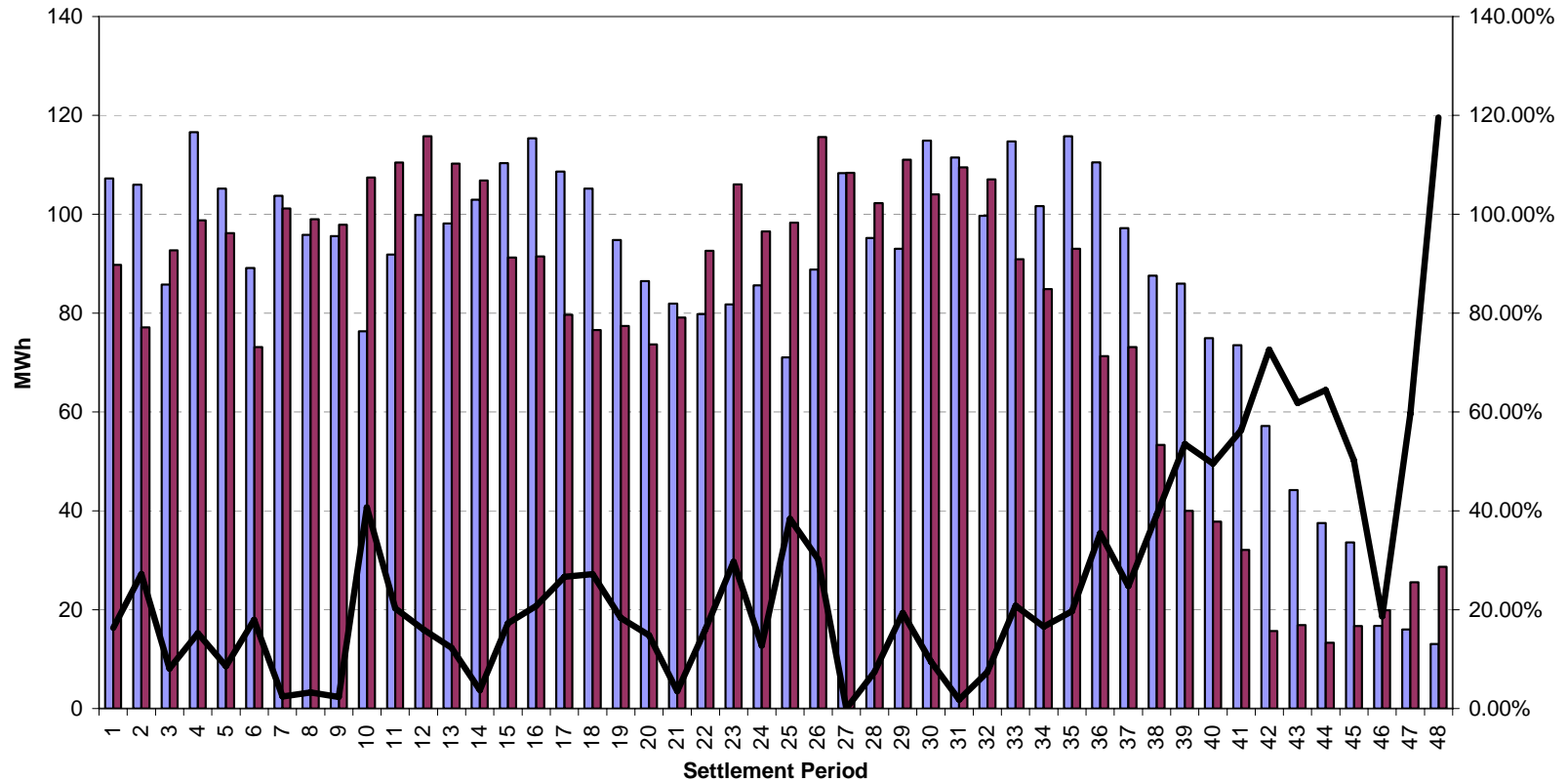
Data

Sum of Expected Sum of Metered Sum of % Difference

Period

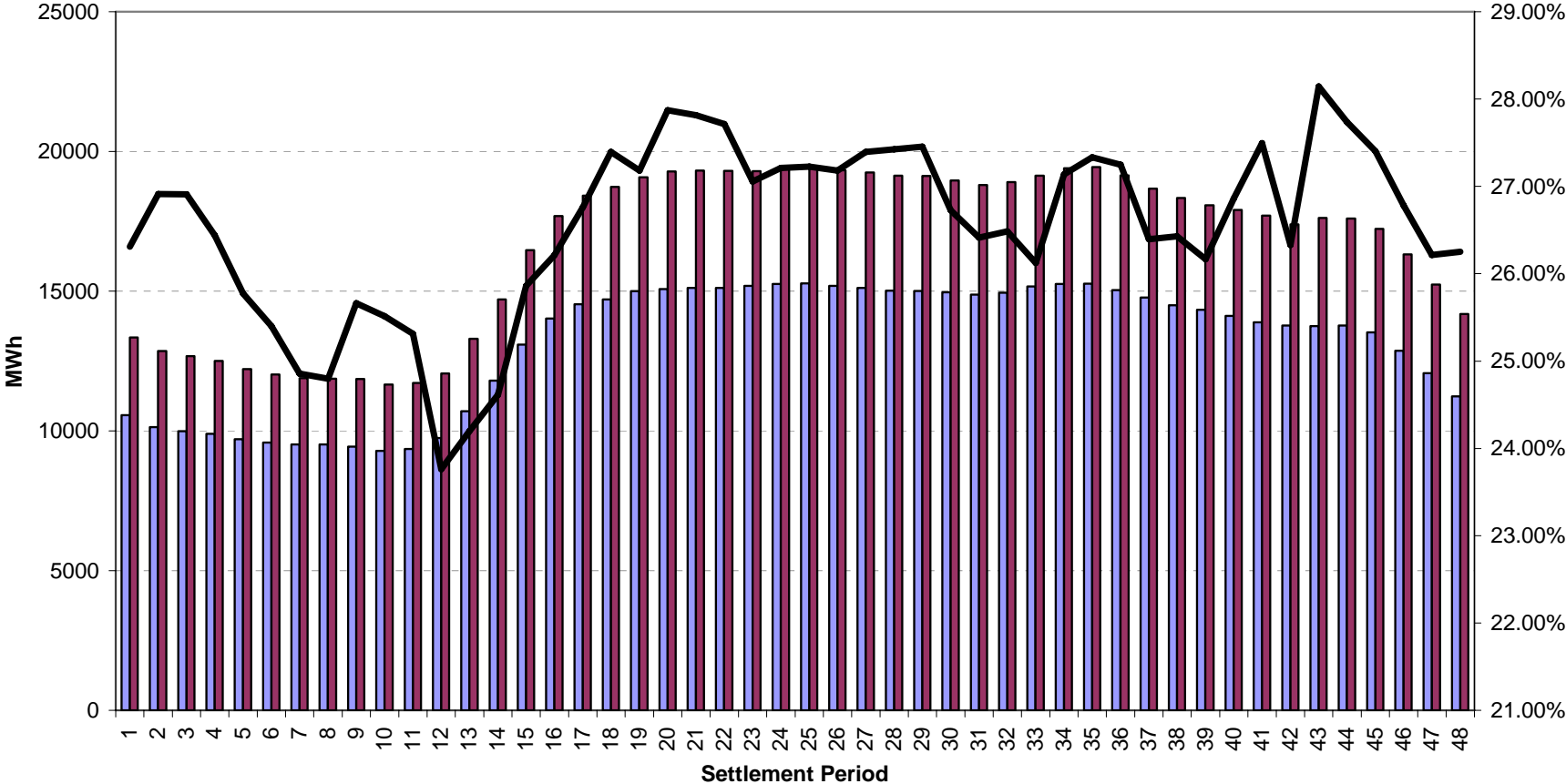
Summer day – production – wind

Prod/Cons Status | P | FUEL TYPE | WIND | BMU Type | (All) | Party Name | (All)



Summer day – all consumption accounts

Prod/Cons Status C FUEL TYPE (All) BMU Type (All) Party Name (All)



Data
█ Sum of Abs Expected █ Sum of Abs Metered — Sum of % Difference

Period