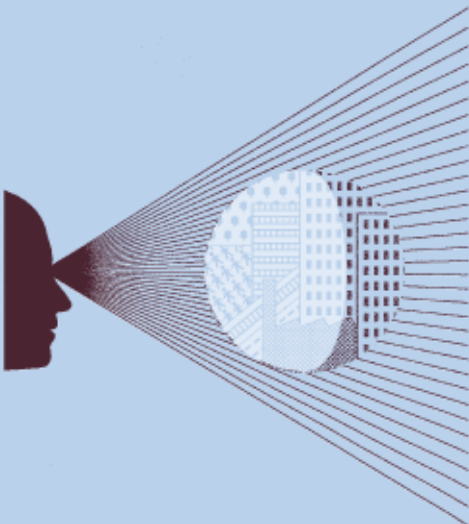


# What are the costs and benefits of zonal loss charging?

## Appendix 1: Snapshot TLMs

Prepared for  
**ELEXON**

June 2006



Oxera Consulting Ltd is registered in England No. 2589629. Registered office at Park Central, 40/41 Park End Street, Oxford OX1 1JD, UK. Although every effort has been made to ensure the accuracy of the material and the integrity of the analysis presented herein, the Company accepts no liability for any actions taken on the basis of its contents.

Oxera Consulting Ltd is not licensed in the conduct of investment business as defined in the Financial Services and Markets Act 2000. Anyone considering a specific investment should consult their own broker or other investment adviser. The Company accepts no liability for any specific investment decision, which must be at the investor's own risk.

© Elexon Ltd, 2006. All rights reserved. Except for the quotation of short passages for the purposes of criticism or review, no part may be used or reproduced without permission.

## 2006/07 Central Scenario

Zone	Average		Peak		Trough		Mid	
	Generation	Supply	Generation	Supply	Generation	Supply	Generation	Supply
1	1.005275	1.011803	1.00852	1.016313	1.007393	1.012064	1.004771	1.011111
2	0.997729	1.004258	0.998388	1.006181	1.005543	1.010214	0.996371	1.002711
3	1.015125	1.021654	1.020732	1.028525	1.0155	1.02017	1.014662	1.021003
4	0.992685	0.999214	0.987961	0.995753	1.000439	1.005109	0.992099	0.998439
5	1.004802	1.01133	1.00679	1.014583	1.007139	1.01181	1.004428	1.010769
6	0.985959	0.992488	0.982248	0.990041	0.986175	0.990846	0.986844	0.993184
7	0.990008	0.996537	0.98717	0.994963	0.992401	0.997072	0.990303	0.996644
8	1.012463	1.018991	1.018546	1.026339	1.015361	1.020032	1.011393	1.017733
9	1.008634	1.015162	1.013671	1.021464	1.008871	1.013541	1.008281	1.014621
10	1.004709	1.011237	1.010581	1.018373	1.001763	1.006434	1.004919	1.01126
11	1.014481	1.021009	1.023978	1.031771	1.008811	1.013481	1.014764	1.021104
12	0.985065	0.991593	0.983164	0.990957	0.988938	0.993609	0.984911	0.991251
13	0.974437	0.980965	0.959818	0.96761	0.969658	0.974329	0.977927	0.984268
14	0.972238	0.978767	0.949105	0.956898	0.986659	0.99133	0.972818	0.979159

## 2006/07 Demand Scenario

Zone	Average		Peak		Trough		Mid	
	Generation	Supply	Generation	Supply	Generation	Supply	Generation	Supply
1	1.003763	1.01062	1.005703	1.013781	0.997243	1.002249	1.005557	1.011967
2	0.9962	1.003057	0.997289	1.005367	0.99815	1.003156	0.9963	1.00271
3	1.013423	1.02028	1.016556	1.024634	1.004001	1.009008	1.01567	1.022079
4	0.990258	0.997115	0.988957	0.997035	1.000272	1.005279	0.988968	0.995378
5	1.002764	1.00962	1.006804	1.014882	1.00271	1.007717	1.002877	1.009286
6	0.986838	0.993694	0.983232	0.99131	0.99241	0.997417	0.986824	0.993233
7	0.989334	0.99619	0.988712	0.99679	0.995344	1.000351	0.988805	0.995215
8	1.011123	1.01798	1.016825	1.024903	1.005295	1.010302	1.012238	1.018648
9	1.007011	1.013867	1.010992	1.01907	0.996543	1.001549	1.009362	1.015771
10	1.003656	1.010512	1.009926	1.018004	0.994089	0.999096	1.005491	1.011901
11	1.013604	1.02046	1.023472	1.03155	1.000952	1.005958	1.015592	1.022002
12	0.984347	0.991203	0.983262	0.99134	0.987772	0.992778	0.984437	0.990847
13	0.981056	0.987913	0.963138	0.971216	1.006788	1.011794	0.978743	0.985153
14	0.980646	0.987502	0.953636	0.961714	1.030201	1.035208	0.974513	0.980923

## 2006/07 Gas Scenario

Zone	Average		Peak		Trough		Mid	
	Generation	Supply	Generation	Supply	Generation	Supply	Generation	Supply
1	1.00084	1.00737	1.007968	1.015842	1.001219	1.00678	1.000046	1.006303
2	1.000017	1.006547	0.998185	1.006059	1.001315	1.006876	1.000289	1.006546
3	1.009075	1.015605	1.019841	1.027715	1.009426	1.014987	1.007774	1.014031
4	0.995462	1.001992	0.988285	0.996159	0.993399	0.998959	0.997207	1.003464
5	1.0064	1.01293	1.00673	1.014603	1.003093	1.008654	1.007353	1.01361
6	0.98449	0.99102	0.982506	0.990379	0.990256	0.995816	0.983827	0.990084
7	0.992206	0.998736	0.987933	0.995807	0.992242	0.997803	0.993092	0.999348
8	1.009144	1.015674	1.018044	1.025918	1.008186	1.013747	1.008387	1.014643
9	1.003412	1.009943	1.012988	1.020862	1.002537	1.008098	1.002542	1.008799
10	1.004674	1.011204	1.010224	1.018097	1.005862	1.011423	1.00393	1.010186
11	1.013213	1.019743	1.023601	1.031474	1.006519	1.01208	1.013474	1.01973
12	0.986779	0.993309	0.983252	0.991126	0.990562	0.996123	0.986758	0.993014
13	0.98148	0.98801	0.960506	0.968379	0.988781	0.994342	0.983164	0.98942
14	0.974218	0.980748	0.949811	0.957684	0.970921	0.976482	0.978656	0.984912

## 2006/07 Winter

Zone	Average Generation	Supply	Peak Generation	Supply	Trough Generation	Supply	Mid Generation	Supply
1	1.007156	1.013807	1.004876	1.012891	1.013642	1.019367	1.006285	1.012745
2	0.998029	1.004679	0.995786	1.003801	0.999423	1.005148	0.998242	1.004703
3	1.017294	1.023945	1.01568	1.023694	1.021271	1.026996	1.016866	1.023327
4	0.991245	0.997895	0.987551	0.995566	0.987926	0.993651	0.992672	0.999132
5	1.005028	1.011679	1.00585	1.013865	1.003243	1.008968	1.00549	1.011951
6	0.983558	0.990209	0.984033	0.992047	0.983611	0.989337	0.983676	0.990137
7	0.98832	0.994971	0.988323	0.996338	0.985362	0.991087	0.989149	0.995609
8	1.016434	1.023085	1.016606	1.024621	1.018372	1.024097	1.016191	1.022652
9	1.010459	1.01711	1.010732	1.018747	1.014606	1.020331	1.00973	1.01619
10	1.007666	1.014317	1.010189	1.018203	1.0121	1.017826	1.006557	1.013018
11	1.018418	1.025069	1.024583	1.032597	1.021821	1.027547	1.017017	1.023477
12	0.984182	0.990833	0.982092	0.990106	0.982933	0.988658	0.98494	0.9914
13	0.96483	0.971481	0.96827	0.976285	0.965891	0.971616	0.964314	0.970775
14	0.979591	0.986242	0.960542	0.968556	0.976852	0.982577	0.983059	0.989519

## 2006/07 Spring

Zone	Average Generation	Supply	Peak Generation	Supply	Trough Generation	Supply	Mid Generation	Supply
1	1.000834	1.007378	1.007976	1.015833	1.001198	1.006807	1.000041	1.006309
2	1.00001	1.006555	0.998193	1.00605	1.001294	1.006903	1.000284	1.006552
3	1.009068	1.015613	1.019849	1.027706	1.009404	1.015013	1.007769	1.014037
4	0.995456	1.002001	0.988292	0.996149	0.993377	0.998986	0.997202	1.00347
5	1.006393	1.012938	1.006738	1.014594	1.003071	1.00868	1.007348	1.013616
6	0.984484	0.991028	0.982513	0.99037	0.990234	0.995844	0.983822	0.99009
7	0.992199	0.998744	0.987941	0.995798	0.992221	0.99783	0.993087	0.999355
8	1.009137	1.015682	1.018052	1.025909	1.008164	1.013773	1.008382	1.01465
9	1.003406	1.009951	1.012996	1.020853	1.002515	1.008124	1.002537	1.008805
10	1.004668	1.011212	1.010231	1.018088	1.00584	1.011449	1.003925	1.010193
11	1.013206	1.019751	1.023609	1.031465	1.006497	1.012106	1.013469	1.019737
12	0.986772	0.993317	0.98326	0.991116	0.990541	0.99615	0.986753	0.993021
13	0.981474	0.988018	0.960512	0.968368	0.988761	0.99437	0.983159	0.989428
14	0.974212	0.980757	0.949816	0.957673	0.970902	0.976511	0.978651	0.984919

## 2006/07 Summer

Zone	Average Generation	Supply	Peak Generation	Supply	Trough Generation	Supply	Mid Generation	Supply
1	1.001274	1.007797	1.006684	1.013546	0.997965	1.002505	1.001838	1.00812
2	0.997438	1.003961	0.997979	1.004841	0.998695	1.003235	0.99771	1.003993
3	1.009497	1.01602	1.017543	1.024405	1.003968	1.008508	1.010164	1.016447
4	1.000133	1.006657	0.993042	0.999904	0.99796	1.0025	1.002216	1.008498
5	1.005936	1.012459	1.006066	1.012928	1.001698	1.006238	1.007442	1.013725
6	0.988701	0.995224	0.984342	0.991204	0.993444	0.997984	0.988918	0.9952
7	0.994783	1.001306	0.990523	0.997384	0.994953	0.999493	0.995965	1.002247
8	1.007106	1.013629	1.014167	1.021028	1.005084	1.009624	1.007161	1.013444
9	1.002548	1.009071	1.011125	1.017986	0.996679	1.001219	1.003213	1.009495
10	0.999696	1.006219	1.00643	1.013291	0.992984	0.997524	1.000802	1.007084
11	1.00843	1.014953	1.017226	1.024088	1.000414	1.004954	1.009524	1.015806
12	0.988482	0.995006	0.985443	0.992305	0.990207	0.994748	0.989159	0.995442
13	0.980127	0.98665	0.966517	0.973379	1.005428	1.009968	0.977246	0.983529
14	0.975205	0.981728	0.958896	0.965758	1.026443	1.030983	0.967151	0.973434

## 2006/07 Autumn

Zone	Average Generation	Supply	Peak Generation	Supply	Trough Generation	Supply	Mid Generation	Supply
1	1.008391	1.01403	1.004084	1.011043	1.005874	1.01115	1.009817	1.015068
2	0.997971	1.00361	0.996026	1.002985	0.997719	1.002995	0.998578	1.003829
3	1.015994	1.021633	1.013367	1.020326	1.01165	1.016926	1.017574	1.022825
4	0.991956	0.997595	0.990058	0.997018	0.997141	1.002417	0.991393	0.996644
5	1.003024	1.008663	1.005018	1.011977	1.004011	1.009287	1.002812	1.008063
6	0.985535	0.991174	0.985862	0.992821	0.986669	0.991946	0.985526	0.990777
7	0.989224	0.994864	0.990151	0.99711	0.990316	0.995592	0.98914	0.994391
8	1.01299	1.01863	1.013785	1.020744	1.008994	1.01427	1.014014	1.019265
9	1.008921	1.01456	1.008249	1.015208	1.004455	1.009731	1.010252	1.015503
10	1.003674	1.009313	1.008156	1.015115	1.004426	1.009702	1.003161	1.008412
11	1.012946	1.018585	1.021132	1.028092	1.010224	1.015501	1.012655	1.017906
12	0.984939	0.990578	0.98389	0.990849	0.984486	0.989762	0.985464	0.990715
13	0.974428	0.980067	0.972776	0.979735	0.987613	0.992889	0.972117	0.977368
14	0.994701	1.00034	0.973024	0.979984	0.995248	1.000524	0.997918	1.003169

## 2007/08 Central Scenario

Zone	Average Generation	Supply	Peak Generation	Supply	Trough Generation	Supply	Mid Generation	Supply
1	1.003882	1.010556	1.007574	1.015527	0.997865	1.003074	1.00518	1.011457
2	0.997091	1.003765	0.998728	1.006681	0.999158	1.004366	0.996948	1.003225
3	1.014314	1.020988	1.020686	1.028639	1.004992	1.010201	1.015942	1.022219
4	0.99205	0.998724	0.988514	0.996467	1.000868	1.006077	0.99119	0.997467
5	1.004986	1.01166	1.007382	1.015335	1.003224	1.008432	1.005556	1.011833
6	0.9864	0.993074	0.982133	0.990086	0.992037	0.997245	0.986325	0.992602
7	0.989906	0.99658	0.987749	0.995702	0.995653	1.000862	0.989511	0.995788
8	1.011849	1.018523	1.019051	1.027004	1.006224	1.011432	1.012569	1.018846
9	1.007711	1.014385	1.014033	1.021986	0.997432	1.00264	1.009551	1.015828
10	1.004257	1.010931	1.011463	1.019416	0.992696	0.997904	1.006247	1.012524
11	1.014348	1.021022	1.02503	1.032983	1.000966	1.006174	1.016238	1.022515
12	0.985029	0.991703	0.983429	0.991382	0.989557	0.994765	0.984816	0.991093
13	0.977009	0.983683	0.957293	0.965246	0.999289	1.004497	0.975548	0.981825
14	0.972734	0.979408	0.94501	0.952963	1.008392	1.0136	0.969538	0.975815

## 2007/08 Demand Scenario

Zone	Average Generation	Supply	Peak Generation	Supply	Trough Generation	Supply	Mid Generation	Supply
1	1.004559	1.011326	1.005607	1.013836	1.000503	1.006209	1.005702	1.012067
2	0.997136	1.003903	0.997322	1.005552	1.000994	1.006701	0.996706	1.003071
3	1.015101	1.021868	1.018296	1.026526	1.008054	1.013761	1.016582	1.022947
4	0.989719	0.996486	0.988873	0.997102	1.001614	1.007321	0.987715	0.994079
5	1.003309	1.010076	1.007579	1.015809	1.005239	1.010946	1.002718	1.009082
6	0.986594	0.993361	0.982142	0.990372	0.990487	0.996193	0.986811	0.993176
7	0.988976	0.995743	0.987676	0.995906	0.995316	1.001023	0.988225	0.99459
8	1.012655	1.019422	1.018588	1.026818	1.009404	1.015111	1.012938	1.019302
9	1.008595	1.015362	1.01289	1.021119	1.000647	1.006354	1.010114	1.016479
10	1.004278	1.011045	1.012028	1.020258	0.995933	1.00164	1.005395	1.01176
11	1.015023	1.02179	1.025944	1.034173	1.00439	1.010096	1.016184	1.022549
12	0.984824	0.991591	0.982511	0.990741	0.989595	0.995301	0.984552	0.990917
13	0.977612	0.984378	0.960132	0.968361	0.990839	0.996545	0.977666	0.984031
14	0.970437	0.977204	0.949783	0.958013	0.973615	0.979322	0.97309	0.979455

## 2007/08 Gas Scenario

Zone	Average Generation	Supply	Peak Generation	Supply	Trough Generation	Supply	Mid Generation	Supply
1	0.999136	1.005944	1.007574	1.015527	0.995614	1.001543	0.99924	1.005536
2	0.999322	1.00613	0.998728	1.006681	1.000785	1.006714	0.999631	1.005928
3	1.007512	1.01432	1.020686	1.028639	1.000924	1.006853	1.007605	1.013901
4	0.995625	1.002434	0.988514	0.996467	0.996753	1.002682	0.996925	1.003221
5	1.006436	1.013245	1.007382	1.015335	1.005529	1.011458	1.007036	1.013332
6	0.98525	0.992059	0.982133	0.990086	0.99686	1.002789	0.983743	0.990039
7	0.992565	0.999374	0.987749	0.995702	0.996781	1.00271	0.992881	0.999177
8	1.008198	1.015007	1.019051	1.027004	1.003656	1.009585	1.00818	1.014477
9	1.002112	1.008921	1.014033	1.021986	0.995526	1.001454	1.002382	1.008678
10	1.004272	1.011081	1.011463	1.019416	1.003603	1.009532	1.003941	1.010237
11	1.012897	1.019705	1.02503	1.032983	1.00404	1.009969	1.013622	1.019919
12	0.986555	0.993363	0.983429	0.991382	0.995374	1.001303	0.985646	0.991943
13	0.984465	0.991274	0.957293	0.965246	0.993129	0.999058	0.986978	0.993275
14	0.976807	0.983615	0.94501	0.952963	0.97467	0.980599	0.982284	0.988581

## 2007/08 Winter

Zone	Average Generation	Supply	Peak Generation	Supply	Trough Generation	Supply	Mid Generation	Supply
1	1.007162	1.013893	1.004259	1.012326	1.014028	1.019736	1.006295	1.012863
2	0.99865	1.005382	0.996109	1.004177	1.000119	1.005828	0.998888	1.005456
3	1.018747	1.025478	1.016474	1.024542	1.021945	1.027653	1.018577	1.025144
4	0.99141	0.998141	0.987735	0.995802	0.988194	0.993902	0.992811	0.999379
5	1.005735	1.012467	1.00634	1.014408	1.003859	1.009567	1.006246	1.012814
6	0.982998	0.989729	0.983689	0.991757	0.983311	0.989019	0.983028	0.989595
7	0.988042	0.994774	0.988156	0.996224	0.985288	0.990996	0.98881	0.995378
8	1.017692	1.024424	1.017353	1.025421	1.019153	1.024862	1.017622	1.02419
9	1.011839	1.01857	1.01155	1.019618	1.015311	1.021019	1.011331	1.017898
10	1.009028	1.01576	1.011198	1.019266	1.013103	1.018811	1.008045	1.014613
11	1.019953	1.026685	1.025786	1.033854	1.022964	1.028672	1.018682	1.025249
12	0.984356	0.991088	0.982155	0.990223	0.983307	0.989015	0.985086	0.991653
13	0.960946	0.967677	0.965939	0.974007	0.962827	0.968535	0.960034	0.966602
14	0.973641	0.980372	0.957086	0.965154	0.972171	0.97788	0.976483	0.98305

## 2007/08 Spring

Zone	Average Generation	Supply	Peak Generation	Supply	Trough Generation	Supply	Mid Generation	Supply
1	1.003975	1.011111	1.004847	1.012233	1.001006	1.006394	1.004903	1.011963
2	0.999177	1.006313	0.997805	1.005192	1.000687	1.006076	0.999462	1.006522
3	1.014278	1.021414	1.016448	1.023834	1.008931	1.014319	1.015531	1.022591
4	1.000824	1.00796	0.990395	0.997781	0.998123	1.003511	1.003286	1.010346
5	1.009029	1.016165	1.00672	1.014106	1.004402	1.00979	1.01076	1.01782
6	0.98616	0.993296	0.985028	0.992414	0.989625	0.995013	0.985993	0.993053
7	0.994014	1.00115	0.990312	0.997698	0.993143	0.998531	0.995137	1.002197
8	1.011959	1.019095	1.015972	1.023359	1.010285	1.015674	1.012166	1.019226
9	1.007414	1.014549	1.010678	1.018065	1.00164	1.007028	1.008604	1.015664
10	1.003961	1.011097	1.009789	1.017175	0.996694	1.002082	1.005111	1.012171
11	1.014234	1.02137	1.02288	1.030266	1.005372	1.01076	1.015328	1.022388
12	0.986906	0.994042	0.984851	0.992237	0.987918	0.993306	0.987394	0.994454
13	0.968344	0.97548	0.964429	0.971815	0.991845	0.997233	0.964279	0.971339
14	0.950004	0.95714	0.951585	0.958972	0.984381	0.98977	0.942836	0.949896

## 2007/08 Summer

Zone	Average Generation	Supply	Peak Generation	Supply	Trough Generation	Supply	Mid Generation	Supply
1	1.003732	1.009868	1.005878	1.012664	0.999055	1.004302	1.004764	1.010666
2	1.001488	1.007624	0.996886	1.003672	1.001688	1.006935	1.002426	1.008328
3	1.012551	1.018687	1.017821	1.024607	1.00604	1.011287	1.013535	1.019437
4	0.996944	1.00308	0.987343	0.99413	1.00037	1.005617	0.997896	1.003798
5	1.00619	1.012326	1.003296	1.010082	1.003341	1.008589	1.007541	1.013443
6	0.988582	0.994718	0.986154	0.992941	0.993712	0.998959	0.988159	0.99406
7	0.993312	0.999448	0.987955	0.994742	0.996927	1.002175	0.993626	0.999527
8	1.009254	1.01539	1.013809	1.020596	1.004483	1.00973	1.009966	1.015868
9	1.005475	1.011611	1.011369	1.018155	0.99858	1.003828	1.006453	1.012354
10	1.001506	1.007642	1.005626	1.012412	0.993324	0.998571	1.003009	1.008911
11	1.010436	1.016572	1.016674	1.02346	1.000767	1.006014	1.011959	1.017861
12	0.989452	0.995588	0.984292	0.991079	0.993408	0.998656	0.989665	0.995567
13	0.973775	0.979911	0.975185	0.981972	0.992922	0.99817	0.969809	0.975711
14	0.962133	0.968269	0.966204	0.97299	0.978722	0.983969	0.958341	0.964242

## 2007/08 Autumn

Zone	Average Generation	Supply	Peak Generation	Supply	Trough Generation	Supply	Mid Generation	Supply
1	1.008215	1.013857	1.00419	1.01118	1.008636	1.013875	1.00892	1.01423
2	0.99855	1.004191	0.996576	1.003565	1.000464	1.005704	0.998645	1.003955
3	1.016533	1.022175	1.014794	1.021784	1.014213	1.019453	1.017502	1.022812
4	0.992388	0.99803	0.990129	0.997119	0.998885	1.004124	0.991543	0.996853
5	1.003662	1.009304	1.005577	1.012566	1.006461	1.0117	1.00302	1.008331
6	0.985361	0.991002	0.985216	0.992206	0.985862	0.991101	0.985501	0.990811
7	0.98932	0.994962	0.98981	0.9968	0.990964	0.996203	0.989126	0.994437
8	1.013619	1.01926	1.014983	1.021972	1.011696	1.016935	1.014066	1.019376
9	1.00936	1.015001	1.009653	1.016643	1.006904	1.012143	1.010071	1.015382
10	1.004571	1.010212	1.009449	1.016439	1.007262	1.012501	1.003534	1.008845
11	1.013961	1.019602	1.022611	1.0296	1.013174	1.018413	1.013137	1.018448
12	0.985579	0.991221	0.983974	0.990964	0.987653	0.992892	0.985588	0.990899
13	0.971064	0.976706	0.969114	0.976103	0.971709	0.976948	0.971428	0.976739
14	0.990246	0.995887	0.967609	0.974599	0.97558	0.98082	0.996802	1.002113

## 2008/09 Central Scenario

Zone	Average Generation	Supply	Peak Generation	Supply	Trough Generation	Supply	Mid Generation	Supply
1	1.003498	1.01026	1.007272	1.015453	0.996682	1.001366	1.005124	1.011433
2	0.996935	1.003698	0.998886	1.007068	0.999822	1.004506	0.996741	1.00305
3	1.013958	1.020721	1.01961	1.027792	1.003494	1.008179	1.016101	1.02241
4	0.992251	0.999013	0.988382	0.996563	0.997816	1.0025	0.992304	0.998612
5	1.003493	1.010256	1.008132	1.016313	1.002027	1.006711	1.003853	1.010161
6	0.98627	0.993032	0.981562	0.989743	0.993002	0.997686	0.986191	0.992499
7	0.98987	0.996633	0.987384	0.995565	0.994609	0.999293	0.989906	0.996214
8	1.011372	1.018135	1.019958	1.02814	1.003028	1.007713	1.012648	1.018956
9	1.007474	1.014236	1.014045	1.022226	0.995656	1.000341	1.009777	1.016086
10	1.004896	1.011658	1.013732	1.021913	0.996883	1.001568	1.006065	1.012373
11	1.014449	1.021211	1.027573	1.035754	1.000892	1.005576	1.016201	1.022509
12	0.985018	0.991781	0.983324	0.991506	0.990008	0.994692	0.984888	0.991196
13	0.976611	0.983373	0.95484	0.963022	1.004088	1.008772	0.974495	0.980804
14	0.97382	0.980583	0.941579	0.94976	1.025726	1.03041	0.96795	0.974259

## 2008/09 Demand Scenario

Zone	Average Generation	Supply	Peak Generation	Supply	Trough Generation	Supply	Mid Generation	Supply
1	1.003659	1.010389	1.005622	1.013933	0.999376	1.004625	1.004734	1.011123
2	0.99724	1.00397	0.99722	1.005531	1.001967	1.007215	0.996666	1.003055
3	1.013578	1.020307	1.018642	1.026953	1.00642	1.011668	1.014831	1.02122
4	0.989461	0.99619	0.987041	0.995352	0.999232	1.00448	0.988144	0.994533
5	1.003345	1.010074	1.007675	1.015986	1.003527	1.008775	1.003131	1.009519
6	0.987072	0.993802	0.981616	0.989928	0.992314	0.997562	0.987154	0.993543
7	0.989148	0.995877	0.98654	0.994851	0.995163	1.000412	0.988662	0.995051
8	1.011875	1.018605	1.020069	1.028381	1.005227	1.010476	1.012579	1.018968
9	1.007304	1.014034	1.013765	1.022076	0.99858	1.003828	1.008696	1.015085
10	1.004341	1.011071	1.014794	1.023105	0.99304	0.998289	1.005722	1.012111
11	1.015253	1.021983	1.029194	1.037505	1.001522	1.006771	1.016663	1.023052
12	0.985246	0.991976	0.982076	0.990387	0.991354	0.996602	0.98482	0.991209
13	0.978076	0.984806	0.958568	0.966879	0.994476	0.999725	0.977749	0.984138
14	0.97229	0.979019	0.947969	0.95628	0.986139	0.991387	0.973187	0.979576

## 2008/09 Gas Scenario

Zone	Average Generation	Supply	Peak Generation	Supply	Trough Generation	Supply	Mid Generation	Supply
1	0.99526	1.002881	1.007272	1.015453	0.995318	1.001242	0.994426	1.00146
2	0.993791	1.001412	0.998886	1.007068	1.000868	1.006792	0.992429	0.999463
3	1.004058	1.011678	1.01961	1.027792	1.001145	1.007069	1.00336	1.010394
4	0.995271	1.002891	0.988382	0.996563	0.996948	1.002872	0.996753	1.003787
5	1.004706	1.012326	1.008132	1.016313	1.005975	1.011899	1.004822	1.011856
6	0.986666	0.994287	0.981562	0.989743	0.996744	1.002668	0.986099	0.993132
7	0.993552	1.001172	0.987384	0.995565	0.996837	1.002761	0.994588	1.001622
8	1.005298	1.012918	1.019958	1.02814	1.004006	1.00993	1.004379	1.011413
9	0.998913	1.006534	1.014045	1.022226	0.995839	1.001763	0.99831	1.005344
10	1.00196	1.00958	1.013732	1.021913	1.004081	1.010005	1.000718	1.007752
11	1.010637	1.018258	1.027573	1.035754	1.004569	1.010493	1.010421	1.017455
12	0.985427	0.993048	0.983324	0.991506	0.995373	1.001297	0.984465	0.991499
13	0.998439	1.006059	0.95484	0.963022	0.992355	0.998279	1.006756	1.01379
14	0.993021	1.000641	0.941579	0.94976	0.97357	0.979494	1.005305	1.012339

## 2008/09 Winter

Zone	Average Generation	Supply	Peak Generation	Supply	Trough Generation	Supply	Mid Generation	Supply
1	1.007433	1.014326	1.003918	1.012184	1.013514	1.019468	1.006799	1.013528
2	0.998784	1.005677	0.99596	1.004226	1.000318	1.006272	0.999026	1.005755
3	1.019653	1.026547	1.016948	1.025214	1.022129	1.028083	1.019677	1.026406
4	0.990971	0.997865	0.987531	0.995796	0.987954	0.993908	0.992275	0.999004
5	1.006559	1.013453	1.006937	1.015202	1.004237	1.010191	1.007176	1.013904
6	0.981952	0.988845	0.982816	0.991082	0.982703	0.988657	0.981842	0.988571
7	0.987288	0.994182	0.987683	0.995948	0.984825	0.990779	0.987933	0.994662
8	1.019307	1.0262	1.018592	1.026858	1.020168	1.026122	1.019396	1.026124
9	1.012971	1.019865	1.012325	1.020591	1.015629	1.021583	1.012666	1.019395
10	1.011717	1.018611	1.01352	1.021785	1.015305	1.021259	1.010868	1.017597
11	1.022922	1.029815	1.028398	1.036663	1.025368	1.031322	1.021799	1.028528
12	0.98393	0.990824	0.981581	0.989847	0.983155	0.989109	0.9846	0.991329
13	0.95766	0.964554	0.963836	0.972102	0.960292	0.966246	0.956399	0.963128
14	0.969057	0.975951	0.954323	0.962588	0.968618	0.974572	0.971401	0.978129



## 2008/09 Spring

Zone	Average Generation	Supply	Peak Generation	Supply	Trough Generation	Supply	Mid Generation	Supply
1	0.998399	1.005417	1.005086	1.012667	0.996669	1.0016	0.998606	1.005212
2	0.994531	1.001548	0.998112	1.005693	0.999954	1.004884	0.993645	1.00025
3	1.008619	1.015636	1.016411	1.023992	1.003612	1.008543	1.009372	1.015978
4	0.998662	1.005679	0.989928	0.997509	0.998985	1.003915	1.000603	1.007208
5	1.004324	1.011342	1.007366	1.014947	1.001969	1.006899	1.005179	1.011784
6	0.98925	0.996268	0.984237	0.991819	0.99408	0.99901	0.989702	0.996308
7	0.99409	1.001108	0.989231	0.996813	0.995911	1.000842	0.995165	1.00177
8	1.005833	1.01285	1.017218	1.024799	1.001152	1.006083	1.00601	1.012615
9	1.001769	1.008787	1.01134	1.018921	0.995564	1.000494	1.002528	1.009134
10	0.998518	1.005535	1.012039	1.01962	0.990306	0.995237	0.99915	1.005755
11	1.008847	1.015864	1.025392	1.032973	0.998771	1.003701	1.009452	1.016057
12	0.984614	0.991632	0.98465	0.992232	0.990628	0.995559	0.984101	0.990707
13	0.99486	1.001877	0.961506	0.969087	1.005485	1.010415	0.998065	1.00467
14	0.984013	0.991031	0.947758	0.95534	1.026928	1.031858	0.980714	0.98732

## 2008/09 Summer

Zone	Average Generation	Supply	Peak Generation	Supply	Trough Generation	Supply	Mid Generation	Supply
1	0.998865	1.005157	1.005732	1.012494	0.998615	1.003567	0.99833	1.004464
2	0.995426	1.001718	0.997007	1.003768	1.001518	1.00647	0.994279	1.000412
3	1.008067	1.014359	1.017963	1.024725	1.005713	1.010666	1.007556	1.013689
4	0.995303	1.001595	0.987236	0.993998	0.999566	1.004518	0.995907	1.00204
5	1.003434	1.009726	1.003535	1.010297	1.00498	1.009932	1.003468	1.009602
6	0.990267	0.996559	0.986105	0.992867	0.991536	0.996488	0.990961	0.997095
7	0.993179	0.999471	0.987832	0.994594	0.995329	1.000281	0.993852	0.999985
8	1.005455	1.011747	1.014166	1.020928	1.006389	1.011341	1.004407	1.010541
9	1.001155	1.007448	1.011533	1.018295	0.998454	1.003406	1.000651	1.006784
10	0.999882	1.006174	1.006095	1.012857	1.006434	1.011386	0.997983	1.004117
11	1.007722	1.014014	1.017241	1.024003	1.00682	1.011773	1.006952	1.013086
12	0.986723	0.993015	0.984342	0.991104	0.99172	0.996672	0.986368	0.992502
13	0.995746	1.002039	0.974295	0.981057	0.990385	0.995338	1.000296	1.00643
14	0.987098	0.99339	0.964642	0.971404	0.975911	0.980864	0.993036	0.99917

## 2008/09 Autumn

Zone	Average Generation	Supply	Peak Generation	Supply	Trough Generation	Supply	Mid Generation	Supply
1	1.007356	1.013114	1.00466	1.011634	1.005629	1.010952	1.008424	1.013785
2	0.997979	1.003736	0.996997	1.003972	0.997055	1.002378	0.998633	1.003994
3	1.01603	1.021788	1.015627	1.022601	1.011703	1.017026	1.017331	1.022692
4	0.992013	0.99777	0.989898	0.996872	0.996703	1.002026	0.991624	0.996985
5	1.003512	1.00927	1.006029	1.013003	1.004838	1.010161	1.003191	1.008553
6	0.985215	0.990972	0.984744	0.991719	0.985847	0.99117	0.985463	0.990825
7	0.989055	0.994812	0.989427	0.996402	0.989733	0.995056	0.989174	0.994536
8	1.013422	1.019179	1.01591	1.022884	1.009872	1.015195	1.014149	1.019511
9	1.008763	1.01452	1.01056	1.017534	1.004645	1.009968	1.009708	1.01507
10	1.00467	1.010428	1.010385	1.017359	1.00656	1.011883	1.003778	1.00914
11	1.014161	1.019919	1.023672	1.030646	1.01269	1.018013	1.013454	1.018815
12	0.984971	0.990729	0.984048	0.991022	0.984008	0.989331	0.985625	0.990986
13	0.973015	0.978773	0.966509	0.973483	0.988237	0.99356	0.970991	0.976353
14	0.992426	0.998184	0.963906	0.970881	0.995292	1.000615	0.996149	1.001511

## 2009/10 Central Scenario

Zone	Average Generation	Supply	Peak Generation	Supply	Trough Generation	Supply	Mid Generation	Supply
1	0.998411	1.005371	1.008125	1.016251	0.998125	1.003692	0.997795	1.004197
2	0.994273	1.001232	0.999285	1.007411	1.001651	1.007218	0.992678	0.99908
3	1.007652	1.014612	1.022421	1.030546	1.006035	1.011602	1.006608	1.013011
4	0.994234	1.001194	0.988417	0.996543	1.00021	1.005777	0.994465	1.000868
5	1.003285	1.010245	1.008785	1.01691	1.006426	1.011992	1.00253	1.008932
6	0.988799	0.995759	0.980822	0.988948	0.99166	0.997226	0.990003	0.996405
7	0.991877	0.998837	0.986995	0.995121	0.99586	1.001427	0.992404	0.998806
8	1.007779	1.014739	1.021493	1.029619	1.006674	1.012241	1.006774	1.013177
9	1.001738	1.008698	1.015831	1.023957	0.998318	1.003884	1.001175	1.007578
10	1.003774	1.010734	1.015142	1.023268	1.004249	1.009816	1.002761	1.009164
11	1.013161	1.020121	1.029156	1.037281	1.006864	1.01243	1.012947	1.019349
12	0.984488	0.991448	0.983295	0.99142	0.991894	0.997461	0.983762	0.990164
13	0.992551	0.999511	0.951108	0.959234	0.988103	0.99367	1.000035	1.006437
14	0.985018	0.991978	0.936105	0.944231	0.968792	0.974359	0.996077	1.002479

## 2009/10 Demand Scenario

Zone	Average Generation	Supply	Peak Generation	Supply	Trough Generation	Supply	Mid Generation	Supply
1	1.002194	1.00869	1.006759	1.014601	0.999561	1.004596	1.002442	1.008734
2	0.996879	1.003376	0.998228	1.00607	1.002247	1.007282	0.995868	1.002159
3	1.011873	1.01837	1.019907	1.02775	1.007937	1.012972	1.011913	1.018204
4	0.995069	1.001565	0.987974	0.995816	1.000092	1.005128	0.995321	1.001613
5	1.005297	1.011793	1.008022	1.015864	1.006842	1.011878	1.004911	1.011202
6	0.98749	0.993986	0.982484	0.990326	0.991012	0.996047	0.98777	0.994061
7	0.991849	0.998345	0.987394	0.995236	0.99525	1.000286	0.992077	0.998368
8	1.011183	1.017679	1.019974	1.027816	1.0078	1.012835	1.010997	1.017288
9	1.006134	1.012631	1.014619	1.022461	1.000279	1.005315	1.006521	1.012812
10	1.006238	1.012734	1.012834	1.020676	1.006657	1.011693	1.005547	1.011838
11	1.008721	1.015218	1.019196	1.027038	0.999768	1.004803	1.00949	1.015782
12	0.985749	0.992245	0.983218	0.99106	0.99059	0.995625	0.985398	0.991689
13	0.977949	0.984446	0.957474	0.965316	0.990405	0.995441	0.978496	0.984787
14	0.970333	0.97683	0.945862	0.953704	0.973104	0.97814	0.973517	0.979808

## 2009/10 Gas Scenario

Zone	Average Generation	Supply	Peak Generation	Supply	Trough Generation	Supply	Mid Generation	Supply
1	1.000849	1.007279	1.002986	1.010634	0.996928	1.002205	1.001856	1.007892
2	1.001255	1.007684	0.99564	1.003288	1.002174	1.007451	1.002317	1.008353
3	1.00945	1.015879	1.01539	1.023038	1.002285	1.007562	1.010615	1.016651
4	0.9978	1.004229	0.995005	1.002653	0.997868	1.003145	0.998648	1.004683
5	1.008817	1.015247	1.007365	1.015013	1.007846	1.013123	1.009698	1.015734
6	0.985909	0.992338	0.985002	0.99265	0.997968	1.003245	0.983924	0.989959
7	0.993759	1.000188	0.990984	0.998632	0.99779	1.003067	0.993755	0.999791
8	1.009674	1.016103	1.015268	1.022916	1.004127	1.009405	1.010542	1.016577
9	1.004013	1.010442	1.010406	1.018055	0.996653	1.00193	1.005156	1.011192
10	1.005168	1.011598	1.009015	1.016664	1.003194	1.008471	1.005517	1.011553
11	1.006902	1.013332	1.014037	1.021685	0.995847	1.001124	1.008733	1.014768
12	0.98913	0.99556	0.982792	0.990441	0.997135	1.002412	0.988778	0.994814
13	0.975156	0.981585	0.968952	0.976601	0.992333	0.99761	0.972821	0.978857
14	0.964999	0.971428	0.953978	0.961626	0.972942	0.978219	0.96532	0.971356

## 2009/10 Winter

Zone	Average Generation	Supply	Peak Generation	Supply	Trough Generation	Supply	Mid Generation	Supply
1	1.008525	1.015417	1.00476	1.012882	1.014469	1.02044	1.007959	1.014698
2	0.999613	1.006505	0.996504	1.004626	1.001015	1.006987	0.999927	1.006666
3	1.02097	1.027861	1.017703	1.025825	1.023285	1.029257	1.02111	1.027849
4	0.991177	0.998069	0.987706	0.995828	0.988142	0.994114	0.992492	0.999231
5	1.007368	1.014259	1.007473	1.015595	1.004936	1.010908	1.00805	1.014789
6	0.981443	0.988334	0.9825	0.990622	0.982283	0.988255	0.981289	0.988028
7	0.987076	0.993968	0.987558	0.99568	0.984653	0.990625	0.987703	0.994442
8	1.020652	1.027543	1.019386	1.027508	1.02134	1.027312	1.020859	1.027598
9	1.01414	1.021032	1.012961	1.021083	1.016646	1.022618	1.013946	1.020685
10	1.013074	1.019965	1.014419	1.022541	1.016478	1.022449	1.012331	1.01907
11	1.024404	1.031296	1.029447	1.037569	1.026663	1.032635	1.023386	1.030125
12	0.984241	0.991132	0.981759	0.989881	0.983396	0.989368	0.984947	0.991686
13	0.95352	0.960412	0.961367	0.969489	0.956818	0.96279	0.951885	0.958624
14	0.962647	0.969539	0.950634	0.958756	0.96336	0.969332	0.964363	0.971102

## 2009/10 Spring

Zone	Average Generation	Supply	Peak Generation	Supply	Trough Generation	Supply	Mid Generation	Supply
1	1.005375	1.012377	1.005951	1.013529	1.00056	1.005891	1.006612	1.013603
2	1.000834	1.007836	0.998673	1.006252	1.002491	1.007822	1.001072	1.008062
3	1.016378	1.023379	1.017572	1.02515	1.009637	1.014969	1.01794	1.02493
4	0.997028	1.004029	0.990061	0.99764	0.997329	1.00266	0.998233	1.005223
5	1.009942	1.016944	1.008042	1.01562	1.007223	1.012555	1.011079	1.01807
6	0.985429	0.99243	0.983663	0.991241	0.988262	0.993594	0.985358	0.992349
7	0.992127	0.999128	0.988973	0.996551	0.992485	0.997817	0.992782	0.999772
8	1.014383	1.021385	1.018435	1.026013	1.010836	1.016167	1.014859	1.021849
9	1.009578	1.01658	1.012366	1.019945	1.002312	1.007644	1.011028	1.018018
10	1.009038	1.016039	1.013278	1.020857	1.011321	1.016653	1.008239	1.015229
11	1.018533	1.025535	1.02677	1.034349	1.012639	1.017971	1.018922	1.025912
12	0.987536	0.994537	0.984754	0.992333	0.988877	0.994209	0.987928	0.994918
13	0.962527	0.969529	0.95818	0.965758	0.983908	0.98924	0.95885	0.96584
14	0.940605	0.947607	0.942849	0.950427	0.96456	0.969892	0.935448	0.942438

## 2009/10 Summer

Zone	Average Generation	Supply	Peak Generation	Supply	Trough Generation	Supply	Mid Generation	Supply
1	1.00459	1.010878	1.009013	1.016035	0.999488	1.004477	1.005395	1.011521
2	1.001184	1.007472	0.999126	1.006148	1.001794	1.006784	1.001679	1.007805
3	1.01425	1.020538	1.021862	1.028884	1.006809	1.011799	1.015107	1.021233
4	0.995982	1.00227	0.987595	0.994617	0.995218	1.000208	0.997664	1.00379
5	1.007913	1.014201	1.0061	1.013122	1.004856	1.009846	1.009159	1.015285
6	0.986888	0.993176	0.982653	0.989675	0.991579	0.996569	0.986817	0.992943
7	0.992017	0.998304	0.986808	0.99383	0.99354	0.99853	0.992761	0.998887
8	1.011862	1.018149	1.01865	1.025672	1.007677	1.012666	1.012137	1.018263
9	1.007277	1.013565	1.015602	1.022623	0.999465	1.004454	1.008113	1.014239
10	1.006813	1.013101	1.012295	1.019317	1.008173	1.013163	1.006086	1.012212
11	1.014949	1.021237	1.023386	1.030407	1.008892	1.013882	1.015393	1.021519
12	0.98882	0.995108	0.984554	0.991576	0.991938	0.996928	0.989089	0.995216
13	0.968064	0.974352	0.959906	0.966928	0.988661	0.99365	0.96514	0.971266
14	0.95483	0.961118	0.948903	0.955924	0.973633	0.978622	0.951976	0.958102

## 2009/10 Autumn

Zone	Average Generation	Supply	Peak Generation	Supply	Trough Generation	Supply	Mid Generation	Supply
1	1.002524	1.008378	1.002645	1.009569	1.003677	1.008857	1.00248	1.008107
2	0.995158	1.001011	0.995388	1.002311	0.996396	1.001577	0.99508	1.000707
3	1.011963	1.017816	1.013551	1.020475	1.010081	1.015262	1.012362	1.017989
4	0.991709	0.997562	0.988039	0.994962	0.997949	1.00313	0.991109	0.996736
5	1.002372	1.008225	1.004628	1.011551	1.004589	1.009769	1.001799	1.007426
6	0.987645	0.993498	0.986738	0.993661	0.987498	0.992679	0.988024	0.99365
7	0.989585	0.995438	0.988846	0.995769	0.991517	0.996698	0.989495	0.995122
8	1.010826	1.01668	1.014751	1.021674	1.008009	1.01319	1.011096	1.016723
9	1.005331	1.011184	1.008635	1.015558	1.002788	1.007969	1.005629	1.011256
10	1.002867	1.008721	1.010275	1.017198	1.00155	1.00673	1.002325	1.007952
11	1.012887	1.01874	1.023812	1.030735	1.010065	1.015246	1.012171	1.017798
12	0.984592	0.990445	0.983191	0.990114	0.987395	0.992576	0.984409	0.990036
13	0.984176	0.990029	0.975263	0.982187	0.987736	0.992917	0.984889	0.990516
14	1.002496	1.008349	0.970578	0.977501	0.993441	0.998622	1.009152	1.014779

## 2010/11 Central Scenario

Zone	Average Generation	Supply	Peak Generation	Supply	Trough Generation	Supply	Mid Generation	Supply
1	1.002146	1.008661	1.008169	1.01585	1.000709	1.00586	1.001897	1.008248
2	0.998331	1.004847	1.000053	1.007734	1.002395	1.007546	0.997511	1.003862
3	1.011151	1.017666	1.020474	1.028155	1.009555	1.014706	1.010471	1.016822
4	0.999738	1.006254	0.993111	1.000791	0.99878	1.003932	1.00117	1.007521
5	1.008975	1.015491	1.009939	1.017619	1.005837	1.010988	1.009804	1.016155
6	0.987311	0.993827	0.98222	0.9899	0.991428	0.996579	0.98744	0.993791
7	0.993644	1.00016	0.989617	0.997297	0.994709	0.999861	0.994276	1.000627
8	1.010904	1.01742	1.019882	1.027563	1.008043	1.013195	1.010544	1.016895
9	1.005573	1.012089	1.014811	1.022492	1.002056	1.007208	1.005317	1.011668
10	1.006028	1.012543	1.011921	1.019601	1.005638	1.01079	1.005573	1.011924
11	1.00794	1.014456	1.017629	1.025309	0.998579	1.00373	1.008872	1.015223
12	0.987211	0.993726	0.985018	0.992698	0.992029	0.997181	0.98678	0.993131
13	0.973111	0.979627	0.951075	0.958756	0.986683	0.991835	0.973604	0.979955
14	0.962299	0.968815	0.935405	0.943085	0.966915	0.972067	0.965394	0.971745

## 2010/11 Demand Scenario

Zone	Average Generation	Supply	Peak Generation	Supply	Trough Generation	Supply	Mid Generation	Supply
1	0.997844	1.004164	1.004085	1.011769	0.997703	1.002843	0.997446	1.003375
2	0.99552	1.00184	0.998148	1.005832	1.002259	1.007398	0.994158	1.000087
3	1.005879	1.012199	1.01585	1.023534	1.004819	1.009958	1.005153	1.011082
4	0.9993	1.00562	0.993544	1.001228	1.001536	1.006675	1.000085	1.006014
5	1.00567	1.01199	1.009974	1.017658	1.006972	1.012111	1.005236	1.011165
6	0.991248	0.997568	0.98439	0.992073	0.994733	0.999872	0.99192	0.997849
7	0.995379	1.001699	0.990775	0.998459	0.997972	1.003111	0.995925	1.001854
8	1.005605	1.011925	1.016237	1.023921	1.003298	1.008437	1.005052	1.010982
9	0.998655	1.004975	1.008658	1.016342	0.995196	1.000335	0.998437	1.004366
10	1.003396	1.009716	1.011854	1.019537	1.004794	1.009934	1.002356	1.008285
11	1.005759	1.01208	1.018185	1.025869	0.997766	1.002905	1.006171	1.012101
12	0.987134	0.993454	0.984817	0.992501	0.993702	0.998841	0.986506	0.992436
13	0.990673	0.996993	0.95945	0.967134	0.993671	0.99881	0.994883	1.000812
14	0.984184	0.990504	0.947631	0.955315	0.976491	0.981631	0.991433	0.997362

## 2010/11 Gas Scenario

Zone	Average Generation	Supply	Peak Generation	Supply	Trough Generation	Supply	Mid Generation	Supply
1	0.993827	1.000478	0.994659	1.002428	0.995305	1.000732	0.993909	1.000149
2	0.99603	1.002681	0.992057	0.999827	1.002762	1.008188	0.995665	1.001904
3	1.000919	1.00757	1.005678	1.013448	0.99923	1.004656	1.001125	1.007365
4	1.002731	1.009382	1.002035	1.009804	1.005518	1.010944	1.002748	1.008987
5	1.00782	1.014471	1.009889	1.017659	1.01008	1.015507	1.00756	1.013799
6	0.989712	0.996362	0.98261	0.99038	1.000294	1.00572	0.988962	0.995202
7	0.998174	1.004824	0.995296	1.003066	1.002135	1.007562	0.998246	1.004486
8	1.001358	1.008009	1.006748	1.014518	1.000003	1.005429	1.001404	1.007644
9	0.99378	1.000431	0.998944	1.006713	0.991509	0.996935	0.994054	1.000294
10	0.999734	1.006384	1.004381	1.012151	1.002146	1.007572	0.999078	1.005318
11	1.001135	1.007786	1.008926	1.016696	0.994479	0.999905	1.001978	1.008217
12	0.988367	0.995018	0.98011	0.98788	0.998897	1.004323	0.987792	0.994031
13	1.004179	1.01083	1.003907	1.011677	0.994711	1.000138	1.00676	1.013
14	0.997549	1.0042	0.993319	1.001089	0.97491	0.980336	1.003508	1.009748

## 2010/11 Winter

Zone	Average Generation	Supply	Peak Generation	Supply	Trough Generation	Supply	Mid Generation	Supply
1	1.008914	1.015409	1.004355	1.012179	1.016404	1.022093	1.008194	1.014433
2	1.000403	1.006897	0.996734	1.004558	1.001159	1.006848	1.000998	1.007237
3	1.021077	1.027571	1.017224	1.025047	1.024772	1.030461	1.021069	1.027308
4	0.995596	1.00209	0.991731	0.999554	0.991603	0.997292	0.997236	1.003475
5	1.008603	1.015097	1.008303	1.016126	1.005835	1.011523	1.009478	1.015717
6	0.982641	0.989135	0.983486	0.991309	0.982399	0.988088	0.982814	0.989053
7	0.98956	0.996055	0.989667	0.997491	0.986297	0.991985	0.990485	0.996723
8	1.019465	1.025959	1.01816	1.025983	1.020969	1.026658	1.019567	1.025806
9	1.014059	1.020554	1.012742	1.020565	1.018164	1.023853	1.013607	1.019846
10	1.010117	1.016611	1.011362	1.019185	1.013871	1.01956	1.009379	1.015617
11	1.012607	1.019102	1.018241	1.026065	1.012369	1.018058	1.012105	1.018344
12	0.986005	0.9925	0.982952	0.990775	0.984451	0.99014	0.987009	0.993248
13	0.952907	0.959401	0.961258	0.969081	0.956517	0.962206	0.951198	0.957436
14	0.960539	0.967033	0.949665	0.957488	0.961942	0.967631	0.962012	0.96825

## 2010/11 Spring

Zone	Average Generation	Supply	Peak Generation	Supply	Trough Generation	Supply	Mid Generation	Supply
1	0.999821	1.006373	1.00577	1.012876	1.000194	1.005297	0.999336	1.005686
2	0.996664	1.003215	0.999128	1.006235	1.00316	1.008263	0.995359	1.001709
3	1.009874	1.016426	1.016912	1.024019	1.008392	1.013495	1.009633	1.015984
4	0.999922	1.006473	0.994236	1.001343	1.000532	1.005635	1.001026	1.007376
5	1.007166	1.013718	1.008945	1.016052	1.006653	1.011756	1.007459	1.013809
6	0.990038	0.99659	0.985027	0.992134	0.993033	0.998136	0.990537	0.996887
7	0.995179	1.00173	0.991854	0.99896	0.996532	1.001635	0.995791	1.002141
8	1.007172	1.013724	1.016976	1.024083	1.00727	1.012373	1.006203	1.012553
9	1.002332	1.008884	1.011866	1.018973	1.000401	1.005504	1.001835	1.008185
10	0.999905	1.006456	1.010186	1.017293	1.000024	1.005127	0.998864	1.005214
11	1.00207	1.008622	1.015949	1.023055	0.997207	1.002309	1.001589	1.007939
12	0.986959	0.993511	0.986294	0.993401	0.993517	0.99862	0.986082	0.992432
13	0.989377	0.995929	0.958403	0.965509	0.98681	0.991913	0.994726	1.001076
14	0.969987	0.976539	0.941981	0.949088	0.966602	0.971705	0.975092	0.981442

## 2010/11 Summer

Zone	Average Generation	Supply	Peak Generation	Supply	Trough Generation	Supply	Mid Generation	Supply
1	0.997347	1.003003	0.999341	1.005885	0.999469	1.004219	0.996828	1.002337
2	0.997925	1.00358	0.994641	1.001184	1.00178	1.006531	0.997778	1.003286
3	1.004038	1.009694	1.008787	1.015331	1.006219	1.010969	1.003117	1.008626
4	1.000126	1.005781	0.999634	1.006177	0.999566	1.004316	1.000531	1.006039
5	1.005474	1.011129	1.00591	1.012454	1.005472	1.010222	1.005628	1.011137
6	0.993284	0.998939	0.989109	0.995652	0.992555	0.997305	0.994244	0.999752
7	0.996429	1.002085	0.994306	1.000849	0.995644	1.000394	0.997112	1.002621
8	1.003474	1.00913	1.008599	1.015143	1.006484	1.011234	1.002323	1.007832
9	0.997995	1.00365	1.003725	1.010269	0.999883	1.004634	0.996999	1.002507
10	0.998247	1.003902	1.002911	1.009455	1.005457	1.010207	0.996261	1.00177
11	0.999233	1.004888	1.005843	1.012386	0.999153	1.003903	0.998534	1.004043
12	0.990176	0.995832	0.985324	0.991868	0.992803	0.997554	0.990513	0.996021
13	0.996599	1.002254	0.986375	0.992919	0.989417	0.994167	0.999792	1.005301
14	0.986231	0.991886	0.975962	0.982506	0.974016	0.978767	0.990508	0.996017

## 2010/11 Autumn

Zone	Average Generation	Supply	Peak Generation	Supply	Trough Generation	Supply	Mid Generation	Supply
1	1.001603	1.007182	1.003395	1.010015	1.002863	1.007085	1.001656	1.006804
2	0.995595	1.001175	0.995522	1.002142	1.001326	1.005548	0.994954	1.000102
3	1.010863	1.016443	1.014611	1.021232	1.008016	1.012238	1.01152	1.016668
4	1.000131	1.005711	0.990522	0.997142	1.006375	1.010597	1.000724	1.005872
5	1.004203	1.009783	1.005332	1.011953	1.005988	1.01021	1.004237	1.009385
6	0.988647	0.994226	0.985971	0.992592	0.993777	0.997999	0.988501	0.993649
7	0.993556	0.999136	0.989021	0.995641	0.99789	1.002112	0.993843	0.998991
8	1.00872	1.014299	1.014878	1.021499	1.003107	1.007329	1.009629	1.014777
9	1.003881	1.009461	1.010523	1.017143	0.998672	1.002894	1.004636	1.009784
10	0.99984	1.00542	1.009655	1.016275	0.991491	0.995713	1.00082	1.005968
11	1.001411	1.00699	1.016086	1.022707	0.990018	0.99424	1.002357	1.007505
12	0.985835	0.991415	0.983211	0.989831	0.994015	0.998237	0.98503	0.990178
13	0.985724	0.991304	0.973711	0.980332	0.992635	0.996857	0.986513	0.991661
14	1.003588	1.009168	0.967806	0.974427	0.997427	1.001649	1.010525	1.015673

## 2011/12 Central Scenario

Zone	Average Generation	Supply	Peak Generation	Supply	Trough Generation	Supply	Mid Generation	Supply
1	0.995964	1.002585	1.004255	1.012237	0.996447	1.001832	0.995352	1.001386
2	0.993111	0.999732	0.997232	1.005214	1.000231	1.005615	0.991665	0.9977
3	1.004336	1.010956	1.016579	1.024561	1.004091	1.009476	1.003322	1.009356
4	0.996767	1.003388	0.992288	1.00027	0.998891	1.004276	0.997602	1.003637
5	1.003453	1.010074	1.009245	1.017227	1.005364	1.010749	1.002887	1.008921
6	0.991299	0.99792	0.982609	0.990591	0.993379	0.998764	0.992738	0.998772
7	0.993822	1.000443	0.988867	0.996849	0.995752	1.001137	0.994766	1.0008
8	1.004563	1.011184	1.01706	1.025042	1.003463	1.008848	1.003697	1.009731
9	0.998115	1.004736	1.010478	1.01846	0.995313	1.000698	0.997632	1.003667
10	1.003181	1.009802	1.013308	1.021289	1.006112	1.011497	1.001786	1.007821
11	1.011201	1.017822	1.025994	1.033975	1.004827	1.010212	1.011141	1.017175
12	0.984838	0.991459	0.983021	0.991003	0.991126	0.996511	0.984407	0.990442
13	1.003885	1.010506	0.9613	0.969282	1.000904	1.006289	1.011184	1.017218
14	0.994501	1.001122	0.943828	0.95181	0.980766	0.986151	1.005241	1.011276

## 2011/12 Demand Scenario

Zone	Average Generation	Supply	Peak Generation	Supply	Trough Generation	Supply	Mid Generation	Supply
1	0.994252	1.001495	0.998371	1.006857	0.992807	0.999033	0.994237	1.001266
2	0.992673	0.999916	0.993029	1.001516	0.996247	1.002474	0.992114	0.999142
3	1.005148	1.012391	1.01413	1.022617	1.003899	1.010126	1.004406	1.011434
4	1.001514	1.008757	0.994385	1.002872	1.001449	1.007676	1.002789	1.009817
5	1.008196	1.015438	1.008274	1.016761	1.006983	1.01321	1.0087	1.015729
6	0.991483	0.998726	0.986229	0.994716	0.995279	1.001506	0.991667	0.998695
7	0.996799	1.004042	0.992226	1.000713	0.998446	1.004673	0.997347	1.004376
8	1.005447	1.012689	1.013564	1.022051	1.001827	1.008054	1.005334	1.012362
9	0.998076	1.005319	1.005947	1.014434	0.995063	1.00129	0.997868	1.004897
10	0.998266	1.005509	1.002656	1.011143	0.995644	1.001871	0.998465	1.005493
11	1.010883	1.018126	1.021071	1.029558	1.000013	1.00624	1.012031	1.019059
12	0.986363	0.993606	0.983513	0.992	0.990812	0.997039	0.986069	0.993097
13	0.993888	1.00113	0.973015	0.981502	1.007236	1.013463	0.994228	1.001256
14	0.985986	0.993228	0.960663	0.96915	0.99016	0.996387	0.988917	0.995945

## 2011/12 Gas Scenario

Zone	Average Generation	Supply	Peak Generation	Supply	Trough Generation	Supply	Mid Generation	Supply
1	0.996262	1.003318	0.998777	1.007272	0.991934	0.997868	0.997355	1.003927
2	0.996799	1.003855	0.993903	1.002398	0.998729	1.004663	0.997315	1.003887
3	1.004146	1.011202	1.010666	1.01916	0.995906	1.00184	1.005512	1.012084
4	1.001956	1.009012	1.002565	1.01106	1.002586	1.00852	1.002257	1.008829
5	1.010035	1.01709	1.014188	1.022682	1.008451	1.014385	1.010309	1.016882
6	0.985992	0.993047	0.977971	0.986466	1.000534	1.006468	0.984529	0.991101
7	0.995792	1.002848	0.993148	1.001643	1.000965	1.006899	0.995578	1.00215
8	1.006919	1.013975	1.013666	1.022161	0.99898	1.004914	1.008189	1.014761
9	0.997657	1.004712	1.004473	1.012967	0.989007	0.994941	0.999069	1.005641
10	1.006926	1.013981	1.013695	1.02219	1.003727	1.009661	1.007178	1.01375
11	1.014696	1.021751	1.025552	1.034047	1.00215	1.008083	1.016372	1.022945
12	0.987357	0.994413	0.980216	0.98871	0.995705	1.001639	0.987097	0.99367
13	0.985935	0.992991	0.975355	0.98385	1.006972	1.012906	0.983443	0.990015
14	0.97418	0.981236	0.957539	0.966034	0.986761	0.992695	0.974353	0.980925

## 2011/12 Winter

Zone	Average Generation	Supply	Peak Generation	Supply	Trough Generation	Supply	Mid Generation	Supply
1	1.005878	1.012536	1.000978	1.008977	1.012031	1.017537	1.005424	1.011966
2	0.99784	1.004498	0.994543	1.002542	0.999012	1.004518	0.998227	1.004769
3	1.018097	1.024755	1.014174	1.022174	1.020137	1.025643	1.018386	1.024929
4	0.99475	1.001408	0.991066	0.999066	0.991353	0.996859	0.99617	1.002712
5	1.007855	1.014513	1.007854	1.015854	1.004625	1.010131	1.00872	1.015262
6	0.982221	0.988879	0.984133	0.992132	0.983695	0.989201	0.981809	0.988352
7	0.988977	0.995635	0.988859	0.996858	0.986768	0.992274	0.98964	0.996182
8	1.016804	1.023462	1.015754	1.023754	1.01645	1.021956	1.017201	1.023744
9	1.010294	1.016952	1.00903	1.01703	1.012369	1.017874	1.010201	1.016743
10	1.010623	1.017281	1.012804	1.020804	1.01023	1.015735	1.010573	1.017116
11	1.020719	1.027377	1.026047	1.034046	1.019303	1.024809	1.020444	1.026986
12	0.983467	0.990125	0.98103	0.98903	0.983713	0.989219	0.983931	0.990473
13	0.962084	0.968742	0.971396	0.979396	0.966859	0.972365	0.959923	0.966465
14	0.967953	0.974611	0.959131	0.96713	0.970565	0.976071	0.96881	0.975353

## 2011/12 Spring

Zone	Average Generation	Supply	Peak Generation	Supply	Trough Generation	Supply	Mid Generation	Supply
1	1.001849	1.008541	1.003649	1.010951	0.998625	1.003724	1.002566	1.009232
2	0.99755	1.004242	0.997143	1.004446	1.001268	1.006368	0.997092	1.003758
3	1.01249	1.019181	1.014854	1.022157	1.007171	1.01227	1.013576	1.020242
4	0.999437	1.006129	0.992563	0.999866	0.998136	1.003236	1.000965	1.007631
5	1.008999	1.01569	1.008217	1.01552	1.006347	1.011447	1.009957	1.016623
6	0.987181	0.993873	0.985027	0.99233	0.990783	0.995883	0.986994	0.99366
7	0.993493	1.000184	0.990524	0.997826	0.99384	0.99894	0.994117	1.000783
8	1.00968	1.016372	1.015289	1.022592	1.006582	1.011682	1.009834	1.0165
9	1.004725	1.011416	1.009116	1.016419	0.99865	1.00375	1.005687	1.012353
10	1.006167	1.012859	1.011835	1.019138	1.007833	1.012932	1.005292	1.011959
11	1.013829	1.020521	1.023361	1.030664	1.008012	1.013112	1.014011	1.020677
12	0.985693	0.992385	0.984378	0.991681	0.989126	0.994226	0.985424	0.99209
13	0.979237	0.985928	0.966189	0.973492	0.99594	1.001039	0.97778	0.984446
14	0.955674	0.962366	0.948531	0.955834	0.974471	0.979571	0.952937	0.959603

## 2011/12 Summer

Zone	Average Generation	Supply	Peak Generation	Supply	Trough Generation	Supply	Mid Generation	Supply
1	0.995781	1.001691	0.999435	1.00622	0.995415	1.000524	0.99559	1.001303
2	0.99635	1.00226	0.994636	1.001421	0.999911	1.005019	0.996075	1.001788
3	1.002203	1.008114	1.00885	1.015635	0.999977	1.005086	1.001989	1.007702
4	0.999304	1.005214	0.99755	1.004335	0.999937	1.005045	0.999661	1.005374
5	1.005461	1.011371	1.006374	1.013159	1.005218	1.010327	1.00563	1.011342
6	0.993245	0.999155	0.988262	0.995047	0.994914	1.000023	0.993836	0.999549
7	0.995825	1.001735	0.992916	0.999701	0.996741	1.001849	0.996284	1.001997
8	1.00224	1.00815	1.008909	1.015694	1.002172	1.00728	1.00156	1.007273
9	0.995657	1.001568	1.003074	1.009859	0.993532	0.99864	0.995313	1.001026
10	1.000555	1.006466	1.006558	1.013343	1.005909	1.011017	0.998809	1.004522
11	1.007247	1.013157	1.015647	1.022432	1.005099	1.010208	1.006769	1.012482
12	0.988081	0.993991	0.984682	0.991467	0.992446	0.997555	0.987871	0.993584
13	1.004152	1.010062	0.983861	0.990646	1.002889	1.007997	1.007527	1.01324
14	0.992162	0.998072	0.970739	0.977524	0.987212	0.992321	0.996486	1.002199

## 2011/12 Autumn

Zone	Average Generation	Supply	Peak Generation	Supply	Trough Generation	Supply	Mid Generation	Supply
1	0.999971	1.005839	1.00244	1.009285	0.998058	1.003042	1.000396	1.005953
2	0.993717	0.999585	0.994534	1.001379	0.995144	1.000127	0.993659	0.999216
3	1.009301	1.015169	1.013724	1.020569	1.004189	1.009172	1.010135	1.015692
4	0.995518	1.001386	0.990008	0.996853	1.005038	1.010021	0.994619	1.000176
5	1.003251	1.009119	1.005575	1.01242	1.005643	1.010627	1.002775	1.008331
6	0.988408	0.994276	0.982086	0.988931	0.992467	0.99745	0.988793	0.99435
7	0.991756	0.997624	0.988373	0.995218	0.996872	1.001855	0.9915	0.997057
8	1.007364	1.013232	1.01444	1.021285	1.000989	1.005973	1.008095	1.013652
9	1.001639	1.007507	1.009067	1.015913	0.99459	0.999573	1.002465	1.008021
10	1.002685	1.008553	1.012178	1.019023	0.998494	1.003477	1.002608	1.008165
11	1.009835	1.015703	1.024121	1.030966	1.002685	1.007668	1.009715	1.015272
12	0.984091	0.989959	0.98122	0.988065	0.9903	0.995284	0.98353	0.989086
13	0.993521	0.999389	0.978941	0.985786	1.003075	1.008059	0.993894	0.99945
14	1.005684	1.011552	0.970949	0.977794	1.006942	1.011925	1.010673	1.016229



## 2012/13 Central Scenario

Zone	Average Generation	Supply	Peak Generation	Supply	Trough Generation	Supply	Mid Generation	Supply
1	0.997804	1.004521	1.003379	1.011266	0.995923	1.00137	0.997764	1.004245
2	0.996527	1.003243	0.998171	1.006058	1.000346	1.005793	0.99582	1.002301
3	1.005876	1.012592	1.015333	1.02322	1.003539	1.008986	1.005385	1.011867
4	0.999761	1.006477	0.992653	1.00054	0.999186	1.004633	1.001227	1.007709
5	1.008774	1.015491	1.009675	1.017562	1.005556	1.011003	1.009678	1.01616
6	0.989423	0.996139	0.983943	0.99183	0.99411	0.999557	0.989533	0.996014
7	0.994591	1.001308	0.989917	0.997804	0.996298	1.001745	0.995227	1.001708
8	1.006995	1.013712	1.015981	1.023868	1.002935	1.008382	1.006941	1.013422
9	0.998551	1.005268	1.007172	1.015059	0.994288	0.999735	0.998591	1.005072
10	1.006764	1.01348	1.013046	1.020933	1.005954	1.0114	1.006394	1.012875
11	1.014669	1.021386	1.02569	1.033577	1.004654	1.010101	1.015602	1.022084
12	0.986823	0.993539	0.984395	0.992282	0.991719	0.997166	0.986459	0.99294
13	0.985289	0.992006	0.962061	0.969948	1.001325	1.006772	0.985472	0.991953
14	0.973448	0.980165	0.944359	0.952246	0.981136	0.986583	0.976244	0.982725

## 2012/13 Demand Scenario

Zone	Average Generation	Supply	Peak Generation	Supply	Trough Generation	Supply	Mid Generation	Supply
1	0.995051	1.002109	1.001093	1.009434	0.992047	0.998079	0.995211	1.00194
2	0.992819	0.999877	0.991842	1.000183	0.994955	1.000987	0.992868	0.999597
3	1.006737	1.013795	1.01953	1.027871	1.003031	1.009062	1.006095	1.012824
4	0.99901	1.006068	0.990743	0.999084	1.000561	1.006592	1.000211	1.00694
5	1.006189	1.013247	1.005922	1.014263	1.004924	1.010956	1.006865	1.013594
6	0.991426	0.998483	0.98471	0.993051	0.998064	1.004095	0.991319	0.998048
7	0.994993	1.002051	0.988913	0.997254	0.998808	1.00484	0.995401	1.00213
8	1.006258	1.013316	1.016552	1.024893	1.000779	1.006811	1.006348	1.013077
9	0.999424	1.006482	1.010912	1.019253	0.994177	1.000208	0.999297	1.006026
10	0.998487	1.005545	1.004264	1.012605	0.994448	1.000479	0.998905	1.005634
11	1.01143	1.018488	1.023192	1.031533	0.999	1.005032	1.012801	1.01953
12	0.986167	0.993225	0.981852	0.990193	0.993444	0.999475	0.985585	0.992314
13	0.993669	1.000727	0.971331	0.979672	1.009488	1.015519	0.993798	1.000527
14	0.986187	0.993245	0.959454	0.967795	0.992731	0.998762	0.988921	0.99565

## 2012/13 Gas Scenario

Zone	Average Generation	Supply	Peak Generation	Supply	Trough Generation	Supply	Mid Generation	Supply
1	0.99375	1.00121	1.00125	1.009523	0.992779	0.998675	0.993774	1.000582
2	0.991806	0.999266	0.994241	1.002514	0.999293	1.005189	0.990732	0.99754
3	1.003015	1.010475	1.015315	1.023588	0.996971	1.002868	1.003448	1.010256
4	0.999701	1.007161	1.000249	1.008522	1.002383	1.008279	0.999922	1.006731
5	1.005954	1.013414	1.012317	1.02059	1.007458	1.013355	1.005607	1.012415
6	0.987557	0.995017	0.976873	0.985146	1.00125	1.007147	0.987003	0.993811
7	0.995651	1.003111	0.991109	0.999382	1.001165	1.007061	0.995982	1.00279
8	1.002908	1.010368	1.015274	1.023547	0.998344	1.004241	1.003015	1.009823
9	0.997118	1.004578	1.010303	1.018577	0.989397	0.995293	0.997785	1.004593
10	0.99807	1.00553	1.008512	1.016785	0.996907	1.002803	0.99772	1.004528
11	1.008304	1.015764	1.023349	1.031623	0.998834	1.00473	1.009083	1.015892
12	0.984784	0.992244	0.979322	0.987595	0.996851	1.002748	0.983842	0.99065
13	1.008892	1.016352	0.973139	0.981412	1.00729	1.013186	1.015146	1.021954
14	1.000599	1.008059	0.955101	0.963374	0.987018	0.992914	1.01079	1.017598

## 2012/13 Winter

Zone	Average Generation	Supply	Peak Generation	Supply	Trough Generation	Supply	Mid Generation	Supply
1	1.004342	1.011025	0.999972	1.007944	1.012833	1.018396	1.003405	1.009881
2	0.998861	1.005544	0.995072	1.003045	0.999324	1.004887	0.999561	1.006037
3	1.015761	1.022444	1.011741	1.019714	1.021001	1.026564	1.015471	1.021946
4	0.994747	1.00143	0.99177	0.999743	0.990458	0.996022	0.996349	1.002825
5	1.008112	1.014795	1.008178	1.016151	1.004682	1.010246	1.009102	1.015578
6	0.984066	0.990749	0.985661	0.993633	0.983357	0.988921	0.984259	0.990734
7	0.989531	0.996214	0.9905	0.998473	0.985974	0.991538	0.990421	0.996897
8	1.015231	1.021914	1.014161	1.022133	1.017191	1.022755	1.015227	1.021703
9	1.00674	1.013423	1.005052	1.013025	1.013151	1.018714	1.00587	1.012346
10	1.010448	1.01713	1.012166	1.020139	1.010863	1.016427	1.010381	1.016857
11	1.020176	1.026858	1.025353	1.033325	1.02002	1.025583	1.019745	1.02622
12	0.985493	0.992175	0.982609	0.990582	0.98361	0.989174	0.986567	0.993042
13	0.962556	0.969239	0.972852	0.980824	0.965562	0.971125	0.960727	0.967202
14	0.968005	0.974688	0.960496	0.968469	0.968954	0.974518	0.969125	0.975601

## 2012/13 Spring

Zone	Average Generation	Supply	Peak Generation	Supply	Trough Generation	Supply	Mid Generation	Supply
1	0.996345	1.00306	1.002102	1.009285	0.995818	1.001186	0.996107	1.002584
2	0.995298	1.002012	0.997771	1.004954	1.00142	1.006788	0.994099	1.000576
3	1.005878	1.012593	1.013462	1.020644	1.003105	1.008473	1.005863	1.01234
4	0.999792	1.006507	0.99393	1.001113	1.000641	1.006009	1.000897	1.007374
5	1.007269	1.013984	1.00888	1.016062	1.006678	1.012046	1.007629	1.014106
6	0.991841	0.998556	0.986566	0.993748	0.99523	1.000598	0.992319	0.998796
7	0.995872	1.002587	0.992149	0.999331	0.997679	1.003047	0.996471	1.002948
8	1.004091	1.010806	1.01376	1.020943	1.002945	1.008313	1.003434	1.009911
9	0.996615	1.00333	1.005513	1.012695	0.993302	0.99867	0.996531	1.003008
10	1.001504	1.008219	1.011269	1.018452	1.002062	1.00743	1.000469	1.006946
11	1.00936	1.016075	1.02273	1.029912	1.004314	1.009682	1.009016	1.015493
12	0.986379	0.993094	0.985928	0.99311	0.993166	0.998534	0.98545	0.991927
13	1.000713	1.007428	0.967358	0.97454	0.999519	1.004887	1.00613	1.012607
14	0.979755	0.986469	0.949499	0.956682	0.977856	0.983224	0.984885	0.991362

## 2012/13 Summer

Zone	Average Generation	Supply	Peak Generation	Supply	Trough Generation	Supply	Mid Generation	Supply
1	0.997501	1.003248	0.999811	1.006409	0.999181	1.00377	0.997385	1.002691
2	0.993823	0.99957	0.994473	1.00107	0.998762	1.003351	0.993243	0.99855
3	1.005679	1.011426	1.010208	1.016805	1.003165	1.007754	1.006147	1.011454
4	0.999903	1.00565	0.990864	0.997462	1.005935	1.010524	1.000453	1.00576
5	1.003902	1.009649	1.005633	1.01223	1.005572	1.01016	1.003869	1.009176
6	0.991105	0.996852	0.988627	0.995224	0.995464	1.000053	0.991089	0.996396
7	0.994647	1.000394	0.9906	0.997197	0.998632	1.00322	0.994933	1.00024
8	1.00443	1.010177	1.011832	1.01843	0.998792	1.00338	1.005163	1.01047
9	0.996889	1.002636	1.004272	1.010869	0.992264	0.996853	0.997408	1.002714
10	1.000353	1.0061	1.010673	1.01727	0.992342	0.99693	1.001183	1.00649
11	1.007359	1.013106	1.022528	1.029125	0.996413	1.001002	1.008134	1.01344
12	0.985712	0.991459	0.983558	0.990155	0.993371	0.99796	0.984944	0.99025
13	0.998868	1.004615	0.982536	0.989133	1.005056	1.009645	1.000413	1.005719
14	1.016351	1.022098	0.974244	0.980842	1.00864	1.013229	1.024504	1.029811

## 2012/13 Autumn

Zone	Average Generation	Supply	Peak Generation	Supply	Trough Generation	Supply	Mid Generation	Supply
1	0.997501	1.003248	0.999811	1.006409	0.999181	1.00377	0.997385	1.002691
2	0.993823	0.99957	0.994473	1.00107	0.998762	1.003351	0.993243	0.99855
3	1.005679	1.011426	1.010208	1.016805	1.003165	1.007754	1.006147	1.011454
4	0.999903	1.00565	0.990864	0.997462	1.005935	1.010524	1.000453	1.00576
5	1.003902	1.009649	1.005633	1.01223	1.005572	1.01016	1.003869	1.009176
6	0.991105	0.996852	0.988627	0.995224	0.995464	1.000053	0.991089	0.996396
7	0.994647	1.000394	0.9906	0.997197	0.998632	1.00322	0.994933	1.00024
8	1.00443	1.010177	1.011832	1.01843	0.998792	1.00338	1.005163	1.01047
9	0.996889	1.002636	1.004272	1.010869	0.992264	0.996853	0.997408	1.002714
10	1.000353	1.0061	1.010673	1.01727	0.992342	0.99693	1.001183	1.00649
11	1.007359	1.013106	1.022528	1.029125	0.996413	1.001002	1.008134	1.01344
12	0.985712	0.991459	0.983558	0.990155	0.993371	0.99796	0.984944	0.99025
13	0.998868	1.004615	0.982536	0.989133	1.005056	1.009645	1.000413	1.005719
14	1.016351	1.022098	0.974244	0.980842	1.00864	1.013229	1.024504	1.029811

## 2013/14 Central Scenario

Zone	Average Generation	Supply	Peak Generation	Supply	Trough Generation	Supply	Mid Generation	Supply
1	0.992497	0.999774	1.004598	1.012336	0.992606	0.998535	0.991678	0.998269
2	0.99397	1.001247	0.997309	1.005046	0.99931	1.005238	0.993266	0.999857
3	1.000523	1.007801	1.019323	1.027061	0.996976	1.002905	0.999543	1.006135
4	1.000005	1.007283	0.993142	1.00088	1.002163	1.008092	1.00142	1.008012
5	1.006152	1.013429	1.008793	1.01653	1.007548	1.013477	1.006391	1.012982
6	0.990401	0.997678	0.983751	0.991489	1.001249	1.007177	0.989926	0.996517
7	0.997099	1.004377	0.989741	0.997479	1.001026	1.006955	0.998205	1.004797
8	1.001298	1.008575	1.016254	1.023992	0.998426	1.004354	1.000715	1.007307
9	0.993216	1.000494	1.010144	1.017881	0.989379	0.995307	0.992562	0.999154
10	0.997228	1.004505	1.007405	1.015143	0.997058	1.002986	0.99674	1.003331
11	1.007425	1.014703	1.022828	1.030566	0.999013	1.004942	1.007965	1.014557
12	0.987331	0.994609	0.98421	0.991948	0.996862	1.002791	0.98664	0.993232
13	1.009703	1.01698	0.962003	0.969741	1.0073	1.013229	1.017849	1.024441
14	1.001614	1.008891	0.944535	0.952273	0.987162	0.99309	1.013662	1.020253

## 2013/14 Demand Scenario

Zone	Average Generation	Supply	Peak Generation	Supply	Trough Generation	Supply	Mid Generation	Supply
1	0.992794	0.999927	1.000607	1.008972	0.990556	0.996781	0.992833	0.999325
2	0.994497	1.00163	0.992029	1.000394	0.996183	1.002408	0.995145	1.001637
3	1.004027	1.01116	1.019379	1.027744	0.9993	1.005525	1.003538	1.01003
4	0.999646	1.006779	0.991785	1.00015	1.003641	1.009866	1.00056	1.007052
5	1.005164	1.012297	1.005617	1.013983	1.005057	1.011282	1.005785	1.012277
6	0.990474	0.997607	0.986008	0.994374	1.003824	1.010049	0.988906	0.995398
7	0.996523	1.003656	0.98987	0.998235	1.003119	1.009344	0.99671	1.003203
8	1.003417	1.01055	1.015498	1.023863	0.997683	1.003908	1.003604	1.010097
9	0.996681	1.003814	1.01059	1.018955	0.990359	0.996584	0.996736	1.003229
10	0.991236	0.998369	0.99772	1.006085	0.986354	0.992579	0.992029	0.998522
11	1.007228	1.014361	1.020194	1.028559	0.994639	1.000864	1.008758	1.01525
12	0.987063	0.994196	0.982728	0.991093	0.997441	1.003667	0.986113	0.992605
13	1.005391	1.012524	0.973804	0.982169	1.015354	1.021579	1.00837	1.014863
14	0.999816	1.006949	0.962891	0.971256	0.999132	1.005357	1.005828	1.01232

## 2013/14 Gas Scenario

Zone	Average Generation	Supply	Peak Generation	Supply	Trough Generation	Supply	Mid Generation	Supply
1	0.995337	1.003122	0.998265	1.007367	0.990112	0.996503	0.996866	1.003941
2	0.994428	1.002213	0.991463	1.000564	0.99734	1.003731	0.995046	1.002121
3	1.008073	1.015858	1.016567	1.025669	0.998214	1.004605	1.00981	1.016885
4	0.999914	1.007699	0.999392	1.008494	1.003894	1.010285	0.999958	1.007034
5	1.009192	1.016977	1.01374	1.022841	1.008157	1.014549	1.009595	1.016671
6	0.984005	0.99179	0.975197	0.984299	1.001054	1.007445	0.982419	0.989494
7	0.99362	1.001405	0.989908	0.999009	1.001771	1.008162	0.993221	1.000296
8	1.011007	1.018792	1.021482	1.030583	0.998561	1.004952	1.013018	1.020094
9	1.002689	1.010474	1.01259	1.021691	0.989508	0.995899	1.004938	1.012013
10	1.004269	1.012054	1.012585	1.021687	0.997313	1.003704	1.005409	1.012484
11	1.014757	1.022542	1.027674	1.036776	0.999251	1.005642	1.017079	1.024155
12	0.985556	0.993341	0.977589	0.986691	0.996877	1.003268	0.985078	0.992153
13	0.983567	0.991352	0.971749	0.980851	1.007489	1.01388	0.980934	0.988009
14	0.971893	0.979678	0.953961	0.963062	0.987381	0.993772	0.971927	0.979002

## 2013/14 Winter

Zone	Average Generation	Supply	Peak Generation	Supply	Trough Generation	Supply	Mid Generation	Supply
1	0.9967	1.003317	1.000171	1.008151	0.991822	0.997522	0.997742	1.003876
2	0.992315	0.998932	0.994467	1.002447	0.992953	0.998653	0.992363	0.998497
3	1.008171	1.014788	1.01207	1.020051	1.000336	1.006035	1.009786	1.01592
4	0.995071	1.001688	0.992847	1.000827	1.008044	1.013744	0.993094	0.999228
5	1.003821	1.010438	1.007482	1.015462	1.006582	1.012281	1.003202	1.009335
6	0.989948	0.996565	0.986675	0.994656	0.99735	1.00305	0.989312	0.995446
7	0.992054	0.998671	0.991288	0.999268	1.001407	1.007107	0.990647	0.996781
8	1.006981	1.013598	1.01286	1.02084	0.998619	1.004319	1.00843	1.014564
9	0.99895	1.005567	1.004749	1.01273	0.990185	0.995885	1.000496	1.00663
10	0.998289	1.004906	1.005702	1.013683	0.990078	0.995778	0.999489	1.005623
11	1.009954	1.016571	1.021579	1.029559	0.998969	1.004669	1.011155	1.017289
12	0.983926	0.990543	0.983267	0.991247	0.991588	0.997288	0.982866	0.988999
13	0.999412	1.006029	0.975047	0.983027	1.015471	1.021171	0.999894	1.006028
14	1.00739	1.014007	0.962849	0.970829	1.024381	1.030081	1.010516	1.01665

## 2013/14 Spring

Zone	Average Generation	Supply	Peak Generation	Supply	Trough Generation	Supply	Mid Generation	Supply
1	0.994189	1.001022	1.004263	1.011308	0.993235	0.999068	0.99365	0.999991
2	0.998024	1.004856	0.997392	1.004436	0.999364	1.005197	0.998502	1.004843
3	1.002329	1.009162	1.017638	1.024683	0.998377	1.004209	1.001694	1.008035
4	0.998723	1.005556	0.992492	0.999537	1.000317	1.00615	0.999936	1.006277
5	1.007571	1.014403	1.007485	1.01453	1.005316	1.011149	1.008741	1.015082
6	0.988366	0.995199	0.986191	0.993236	1.000468	1.006301	0.986758	0.993099
7	0.995528	1.00236	0.990985	0.99803	0.999603	1.005436	0.995971	1.002312
8	1.006269	1.013101	1.014654	1.021699	1.000127	1.00596	1.007078	1.013418
9	0.995345	1.002177	1.008995	1.01604	0.99105	0.996882	0.995017	1.001357
10	1.006234	1.013067	1.006284	1.013329	0.998663	1.004496	1.008524	1.014865
11	1.011793	1.018626	1.020406	1.027451	1.001256	1.007089	1.013511	1.019852
12	0.987972	0.994804	0.985624	0.992669	0.996829	1.002662	0.987082	0.993423
13	0.998866	1.005699	0.966771	0.973816	1.00316	1.008993	1.003146	1.009486
14	0.978086	0.984919	0.949114	0.956159	0.981535	0.987368	0.982106	0.988447

## 2013/14 Summer

Zone	Average Generation	Supply	Peak Generation	Supply	Trough Generation	Supply	Mid Generation	Supply
1	0.99345	0.999461	0.996871	1.003457	0.992233	0.997637	0.993621	0.999289
2	0.998343	1.004354	1.001063	1.007649	0.999162	1.004566	0.998176	1.003844
3	1.000227	1.006238	1.005448	1.012034	0.996596	1.002	1.000661	1.006329
4	0.999891	1.005901	1.001943	1.008529	1.002343	1.007747	0.999468	1.005136
5	1.007202	1.013212	1.01071	1.017296	1.007169	1.012573	1.007106	1.012774
6	0.989684	0.995695	0.985532	0.992118	1.00113	1.006534	0.98821	0.993878
7	0.996366	1.002376	0.996076	1.002662	1.000483	1.005886	0.995917	1.001585
8	1.004223	1.010234	1.00717	1.013756	0.998705	1.004109	1.005381	1.011048
9	0.99354	0.99955	0.998417	1.005002	0.989642	0.995046	0.994078	0.999746
10	1.004986	1.010997	1.001807	1.008393	0.998592	1.003996	1.007195	1.012863
11	1.009805	1.015816	1.013216	1.019802	1.000687	1.006091	1.011669	1.017337
12	0.98922	0.995231	0.988716	0.995302	0.996843	1.002247	0.988051	0.993719
13	1.003832	1.009843	0.983589	0.990175	1.007736	1.01314	1.00624	1.011908
14	0.99229	0.998301	0.970552	0.977138	0.992061	0.997465	0.995795	1.001463

## 2013/14 Autumn

Zone	Average Generation	Supply	Peak Generation	Supply	Trough Generation	Supply	Mid Generation	Supply
1	0.9992	1.005453	0.99837	1.005501	0.998	1.003319	0.999997	1.005903
2	1.000715	1.006969	0.994441	1.001572	1.00272	1.008039	1.001594	1.0075
3	1.007551	1.013805	1.009397	1.016528	1.005715	1.011034	1.008108	1.014014
4	1.002476	1.008729	1.000819	1.00795	1.006813	1.012132	1.002204	1.00811
5	1.008296	1.014549	1.010927	1.018059	1.010966	1.016285	1.007777	1.013683
6	0.991899	0.998152	0.982218	0.98935	0.995823	1.001143	0.992846	0.998752
7	0.997282	1.003535	0.993832	1.000963	1.000275	1.005594	0.997551	1.003457
8	1.004009	1.010262	1.011239	1.018371	1.003278	1.008597	1.00357	1.009476
9	0.998283	1.004536	1.003322	1.010453	0.995894	1.001213	0.998508	1.004414
10	0.99655	1.002803	1.007383	1.014514	0.999939	1.005258	0.994721	1.000627
11	1.005877	1.01213	1.021228	1.028359	1.001534	1.006853	1.005067	1.010973
12	0.990412	0.996666	0.982513	0.989645	0.997511	1.00283	0.990429	0.996335
13	0.986174	0.992427	0.980959	0.98809	0.9906	0.995919	0.986385	0.992291
14	0.969307	0.97556	0.972937	0.980069	0.954958	0.960277	0.972291	0.978197

## 2014/15 Central Scenario

Zone	Average Generation	Supply	Peak Generation	Supply	Trough Generation	Supply	Mid Generation	Supply
1	0.992199	0.999625	0.998043	1.006057	0.987966	0.994216	0.993018	0.999876
2	0.994348	1.001774	0.994102	1.002116	0.996675	1.002925	0.994621	1.001479
3	1.003113	1.010538	1.015476	1.02349	0.994233	1.000483	1.004007	1.010866
4	1.00297	1.010396	0.998161	1.006175	1.007489	1.013739	1.003416	1.010275
5	1.009491	1.016917	1.010058	1.018072	1.009045	1.015295	1.010242	1.017101
6	0.992354	0.99978	0.990719	0.998733	1.009386	1.015636	0.989673	0.996532
7	1.000178	1.007603	0.996505	1.004519	1.008644	1.014894	0.999619	1.006477
8	1.00694	1.014366	1.013487	1.021501	0.996618	1.002868	1.008963	1.015822
9	0.996393	1.003818	1.006362	1.014376	0.986822	0.993072	0.997772	1.004631
10	1.001859	1.009285	1.005907	1.013921	0.996359	1.002609	1.003202	1.010061
11	1.012208	1.019633	1.021224	1.029238	0.998187	1.004437	1.014674	1.021533
12	0.988627	0.996052	0.985756	0.99377	0.997481	1.003731	0.987871	0.99473
13	0.988811	0.996236	0.967206	0.97522	1.014	1.02025	0.987198	0.994057
14	0.976621	0.984047	0.948786	0.9568	0.993578	0.999828	0.977649	0.984508

## 2014/15 Demand Scenario

Zone	Average Generation	Supply	Peak Generation	Supply	Trough Generation	Supply	Mid Generation	Supply
1	0.993815	1.000935	0.999745	1.007618	0.991929	0.997608	0.994095	1.000705
2	0.994272	1.001393	0.992998	1.00087	0.998004	1.003684	0.994365	1.000976
3	1.005842	1.012962	1.018128	1.026	1.000984	1.006664	1.005863	1.012474
4	1.001237	1.008358	0.994684	1.002556	1.005975	1.011655	1.001859	1.008469
5	1.005414	1.012535	1.005013	1.012885	1.004369	1.010049	1.006407	1.013018
6	0.996039	1.003159	0.995154	1.003026	1.013832	1.019512	0.993066	0.999677
7	0.998521	1.005642	0.993603	1.001475	1.006886	1.012566	0.998136	1.004747
8	1.005677	1.012798	1.012136	1.020008	0.996063	1.001743	1.007538	1.014149
9	0.99839	1.00551	1.008682	1.016555	0.990729	0.996409	0.999292	1.005903
10	0.98543	0.99255	0.986975	0.994847	0.977142	0.982822	0.987699	0.994309
11	1.003658	1.010778	1.011918	1.01979	0.987653	0.993333	1.006633	1.013243
12	0.989999	0.99712	0.986612	0.994485	1.001349	1.007029	0.988759	0.99537
13	0.998973	1.006094	0.979833	0.987706	1.022078	1.027758	0.997436	1.004047
14	0.992164	0.999285	0.968573	0.976445	1.005834	1.011514	0.993274	0.999885

## 2014/15 Gas Scenario

Zone	Average Generation	Supply	Peak Generation	Supply	Trough Generation	Supply	Mid Generation	Supply
1	0.989561	0.997388	0.995487	1.004145	0.988894	0.994931	0.989903	0.996963
2	0.988406	0.996233	0.989882	0.99854	0.996487	1.002524	0.987502	0.994562
3	1.00188	1.009708	1.013448	1.022106	0.995877	1.001913	1.002571	1.00963
4	1.001155	1.008983	1.000965	1.009623	1.007113	1.013149	1.000942	1.008001
5	1.005735	1.013563	1.011712	1.02037	1.007653	1.01369	1.005517	1.012577
6	0.993401	1.001229	0.983172	0.99183	1.010625	1.016662	0.99219	0.999249
7	1.000151	1.007979	0.995575	1.004233	1.008961	1.014998	0.999945	1.007004
8	1.004439	1.012267	1.017473	1.026131	0.996068	1.002105	1.005429	1.012488
9	0.996347	1.004175	1.009035	1.017693	0.987366	0.993403	0.997517	1.004576
10	0.994893	1.002721	1.004813	1.013471	0.991203	0.99724	0.99532	1.002379
11	1.006678	1.014506	1.021516	1.030174	0.994696	1.000733	1.008188	1.015247
12	0.985706	0.993534	0.981072	0.98973	0.999402	1.005439	0.984462	0.991521
13	1.013494	1.021321	0.977446	0.986104	1.015159	1.021196	1.019252	1.026311
14	1.004793	1.01262	0.958708	0.967366	0.994726	1.000763	1.014477	1.021536

## 2014/15 Winter

Zone	Average Generation	Supply	Peak Generation	Supply	Trough Generation	Supply	Mid Generation	Supply
1	0.997145	1.003743	0.99516	1.003295	0.996408	1.001688	0.997807	1.004246
2	0.992456	0.999054	0.992105	1.00024	0.991098	0.996377	0.993021	0.99946
3	1.010794	1.017392	1.009226	1.017361	1.007122	1.012402	1.012026	1.018464
4	0.996839	1.003437	0.99568	1.003815	1.004775	1.010055	0.995528	1.001967
5	1.0059	1.012497	1.008069	1.016204	1.006147	1.011427	1.005766	1.012204
6	0.993681	1.000279	0.993312	1.001447	0.996112	1.001392	0.993438	0.999876
7	0.995237	1.001834	0.996624	1.004759	0.999119	1.004399	0.994435	1.000873
8	1.009747	1.016345	1.010824	1.01896	1.005316	1.010596	1.010769	1.017207
9	1.002179	1.008777	1.001956	1.010091	0.99816	1.00344	1.003296	1.009734
10	1.001535	1.008133	1.004542	1.012677	0.998851	1.004131	1.001911	1.008349
11	1.013584	1.020182	1.020373	1.028508	1.009966	1.015245	1.013627	1.020066
12	0.986151	0.992748	0.985185	0.99332	0.986192	0.991472	0.986503	0.992941
13	0.98252	0.989117	0.978921	0.987056	1.000859	1.006138	0.979326	0.985764
14	0.986921	0.993518	0.966144	0.974279	1.006097	1.011377	0.985968	0.992406

## 2014/15 Spring

Zone	Average Generation	Supply	Peak Generation	Supply	Trough Generation	Supply	Mid Generation	Supply
1	0.990597	0.997026	0.998136	1.005504	0.988737	0.994798	0.990367	0.996308
2	0.99634	1.002769	0.994427	1.001796	0.996876	1.002938	0.99693	1.00287
3	0.999804	1.006234	1.014085	1.021454	0.996492	1.002554	0.998936	1.004877
4	1.003023	1.009452	0.997848	1.005216	1.005799	1.01186	1.003593	1.009534
5	1.008289	1.014718	1.008965	1.016333	1.009816	1.015877	1.008302	1.014243
6	1.001816	1.008245	0.991992	0.999361	1.005872	1.011934	1.002767	1.008707
7	1.002959	1.009388	0.997048	1.004417	1.006084	1.012145	1.003558	1.009499
8	1.003233	1.009662	1.01215	1.019519	0.999284	1.005345	1.003256	1.009197
9	0.992416	0.998845	1.005517	1.012885	0.989271	0.995332	0.991678	0.997619
10	0.9967	1.003129	1.005026	1.012394	0.999288	1.00535	0.995407	1.001348
11	1.006574	1.013003	1.019038	1.026407	1.001701	1.007762	1.006295	1.012236
12	0.991732	0.998161	0.98694	0.994308	0.996384	1.002445	0.991846	0.997787
13	1.003852	1.010281	0.971178	0.978546	1.007198	1.01326	1.008175	1.014115
14	0.981466	0.987895	0.952667	0.960036	0.984962	0.991024	0.985211	0.991151

## 2014/15 Summer

Zone	Average Generation	Supply	Peak Generation	Supply	Trough Generation	Supply	Mid Generation	Supply
1	0.990346	0.996739	0.990549	0.997835	0.98913	0.994478	0.991141	0.997069
2	0.994518	1.000911	0.991912	0.999199	0.997005	1.002353	0.994916	1.000844
3	1.000289	1.006683	1.001249	1.008535	0.994587	0.999935	1.001938	1.007866
4	1.000716	1.007109	1.004928	1.012214	1.005385	1.010733	0.999686	1.005614
5	1.006723	1.013117	1.01049	1.017777	1.007792	1.01314	1.006527	1.012455
6	0.994035	1.000428	0.999369	1.006655	1.008168	1.013516	0.990821	0.996749
7	0.999751	1.006145	1.00306	1.010346	1.006958	1.012306	0.998305	1.004233
8	1.003871	1.010265	1.004996	1.012282	0.997284	1.002632	1.005687	1.011614
9	0.994452	1.000846	0.994547	1.001834	0.987743	0.993091	0.996439	1.002367
10	1.003199	1.009592	1.000091	1.007377	0.997867	1.003215	1.005341	1.011269
11	1.00872	1.015113	1.011468	1.018754	0.999894	1.005242	1.010786	1.016714
12	0.988327	0.994721	0.990156	0.997442	0.997719	1.003067	0.986622	0.99255
13	1.006849	1.013243	0.992427	0.999714	1.013681	1.019029	1.007982	1.01391
14	0.994703	1.001096	0.978661	0.985948	0.997771	1.003119	0.996869	1.002797

## 2014/15 Autumn

Zone	Average Generation	Supply	Peak Generation	Supply	Trough Generation	Supply	Mid Generation	Supply
1	0.992938	0.99987	0.993397	1.001124	0.993866	0.999606	0.993084	0.99975
2	0.995059	1.001992	0.991747	0.999474	0.999294	1.005034	0.995029	1.001696
3	1.004027	1.01096	1.006712	1.014439	1.004755	1.010494	1.003904	1.01057
4	1.009586	1.016519	1.002945	1.010672	1.009058	1.014798	1.011046	1.017712
5	1.009624	1.016556	1.011729	1.019456	1.009296	1.015036	1.009807	1.016473
6	0.998407	1.00534	0.98716	0.994887	1.000694	1.006434	0.999913	1.006579
7	1.004342	1.011275	0.998142	1.005869	1.00449	1.01023	1.005594	1.01226
8	1.001878	1.00881	1.009439	1.017166	1.004773	1.010513	1.000602	1.007268
9	0.995035	1.001967	1.00063	1.008358	0.995601	1.001341	0.994535	1.001201
10	0.995602	1.002535	1.006497	1.014224	1.001042	1.006782	0.993313	0.999979
11	1.004812	1.011745	1.020275	1.028002	1.002785	1.008525	1.003477	1.010143
12	0.991634	0.998567	0.9839	0.991627	0.996233	1.001973	0.992149	0.998815
13	0.992169	0.999102	0.984012	0.991739	0.993565	0.999305	0.99343	1.000096
14	0.975019	0.981952	0.974959	0.982686	0.957288	0.963028	0.979234	0.9859

Oxera  
Park Central  
40/41 Park End Street  
Oxford OX1 1JD  
United Kingdom

Tel: +44 (0) 1865 253 000  
Fax: +44 (0) 1865 251 172

[www.oxera.com](http://www.oxera.com)