

Date	Period	C15SBP	P90SBP	C15SSP	P90SSP		C00SBP	C00SSP
02-Jul-02	1	45.00	45.00	11.23	10.22		45	11.169
02-Jul-02	2	13.65	13.65	13.05	10.19		13.65	13.045
02-Jul-02	3	13.65	13.65	13.71	10.33		13.65	13.68
02-Jul-02	4	14.90	14.90	12.51	9.95		14.9	12.602
02-Jul-02	5	14.12	14.12	12.07	9.77		14.119	12.069
02-Jul-02	6	13.65	13.65	11.76	9.56		13.65	11.598
02-Jul-02	7	13.65	13.65	12.02	9.95		13.65	12.625
02-Jul-02	8	13.65	13.65	14.93	10.94		13.65	15.026
02-Jul-02	9	13.65	13.65	12.79	10.31		13.65	12.67
02-Jul-02	10	13.65	13.65	11.15	9.55		13.65	11.012
02-Jul-02	11	13.65	13.65	11.73	10.05		13.65	11.731
02-Jul-02	12	14.90	14.90	12.05	10.08		14.9	11.859
02-Jul-02	13	14.06	14.06	10.42	10.09		13.955	10.338
02-Jul-02	14	13.65	13.65	9.27	9.26		13.65	9.273
02-Jul-02	15	19.20	19.20	7.43	9.23		19.2	7.433
02-Jul-02	16	78.20	53.20	9.96	10.83		78.2	9.96
02-Jul-02	17	78.20	53.20	9.07	10.56		78.2	9.069
02-Jul-02	18	15.20	15.20	9.95	10.90		15.2	9.959
02-Jul-02	19	15.20	15.20	9.99	11.08		15.2	9.992
02-Jul-02	20	19.10	19.10	10.07	11.73		19.1	10.154
02-Jul-02	21	19.20	19.20	10.13	12.06		19.2	10.125
02-Jul-02	22	32.69	32.69	10.76	12.54		32.69	10.762
02-Jul-02	23	19.10	19.10	10.74	11.61		19.1	10.743
02-Jul-02	24	19.10	19.10	10.70	11.71		19.1	10.699
02-Jul-02	25	17.95	17.95	10.55	11.63		17.947	10.545
02-Jul-02	26	18.26	18.26	10.61	11.69		18.26	10.607
02-Jul-02	27	10.43	53.20	10.43	11.32		10.43	10.43
02-Jul-02	28	10.41	53.20	10.41	11.31		10.412	10.412
02-Jul-02	29	19.14	19.14	10.27	11.22		19.138	10.265
02-Jul-02	30	19.15	19.15	9.81	11.06		19.147	9.808
02-Jul-02	31	9.82	53.20	9.82	10.98		9.821	9.821
02-Jul-02	32	19.20	19.20	9.87	10.92		19.2	9.87
02-Jul-02	33	17.20	17.20	9.69	10.86		17.2	9.76
02-Jul-02	34	17.20	17.20	9.69	11.43		17.2	9.863
02-Jul-02	35	19.11	19.12	9.76	11.32		19.115	9.761
02-Jul-02	36	19.15	19.15	9.91	11.30		19.15	9.914
02-Jul-02	37	15.90	7.27	10.25	11.68		15.9	10.246
02-Jul-02	38	16.00	16.00	11.79	15.28		16	11.825
02-Jul-02	39	17.35	17.35	12.58	16.45		17.35	13.576
02-Jul-02	40	14.00	10.85	10.84	12.41		14	10.95
02-Jul-02	41	18.00	18.00	11.15	12.85		18	11.377
02-Jul-02	42	17.20	17.20	11.24	13.20		17.2	11.355
02-Jul-02	43	23.96	10.47	10.76	13.18		78.113	11.249
02-Jul-02	44	37.09	27.92	10.22	12.71		37.086	10.288
02-Jul-02	45	19.20	19.20	10.60	11.58		19.2	10.505
02-Jul-02	46	9.97	50.00	9.97	10.94		9.869	9.869
02-Jul-02	47	10.62	9.90	10.77	10.33		10.62	10.464
02-Jul-02	48	10.98	9.90	12.62	9.25		10.685	13.526
03-Jul-02	1	18.34	9.90	14.47	9.13		19.008	14.471
03-Jul-02	2	20.44	9.90	14.48	9.97		20.436	14.481
03-Jul-02	3	16.90	9.90	14.46	12.72		16.836	14.459
03-Jul-02	4	14.75	9.90	14.45	13.32		14.753	14.455
03-Jul-02	5	11.29	9.90	14.50	11.18		12.388	14.503
03-Jul-02	6	12.83	9.90	14.50	9.86		12.83	14.503
03-Jul-02	7	15.16	9.90	14.50	10.95		15.163	14.5

03-Jul-02	8	15.35	9.90	14.50	11.48		15.32	14.5
03-Jul-02	9	13.71	9.90	14.50	9.65		13.71	14.5
03-Jul-02	10	11.84	9.90	14.50	8.55		11.909	14.5
03-Jul-02	11	13.52	9.90	14.50	10.16		13.894	14.5
03-Jul-02	12	15.09	9.90	14.50	10.25		14.928	14.5
03-Jul-02	13	19.30	9.90	14.51	11.31		19.241	14.513
03-Jul-02	14	17.44	9.90	14.52	12.28		17.537	14.522
03-Jul-02	15	22.13	16.85	13.98	14.90		22.474	13.979
03-Jul-02	16	21.49	20.63	14.01	17.18		21.63	14.011
03-Jul-02	17	36.66	35.20	12.19	14.91		36.66	12.185
03-Jul-02	18	10.89	35.20	10.89	12.48		10.892	10.892
03-Jul-02	19	15.20	15.20	11.23	13.52		15.2	11.229
03-Jul-02	20	15.20	15.20	12.09	14.13		15.2	12.089
03-Jul-02	21	12.42	45.70	12.42	14.14		12.419	12.419
03-Jul-02	22	11.94	45.70	11.94	13.26		11.937	11.937
03-Jul-02	23	11.26	45.70	11.26	12.12		11.256	11.256
03-Jul-02	24	11.25	45.70	11.25	12.13		11.249	11.249
03-Jul-02	25	10.94	45.70	10.94	11.61		10.942	10.942
03-Jul-02	26	11.01	45.70	11.01	11.72		11.007	11.007
03-Jul-02	27	10.91	45.70	10.91	11.64		10.912	10.912
03-Jul-02	28	17.20	17.20	10.99	11.86		17.2	10.995
03-Jul-02	29	20.59	17.63	14.01	17.18		20.655	14.014
03-Jul-02	30	21.21	21.19	14.01	16.86		21.197	14.018
03-Jul-02	31	12.59	45.70	12.59	14.20		12.59	12.59
03-Jul-02	32	20.66	20.66	11.31	12.32		20.659	11.313
03-Jul-02	33	19.20	19.20	11.04	11.95		19.2	11.141
03-Jul-02	34	10.64	45.70	10.64	11.12		10.639	10.639
03-Jul-02	35	19.10	19.10	10.71	11.25		19.1	10.709
03-Jul-02	36	10.85	45.70	10.85	11.46		10.855	10.855
03-Jul-02	37	17.36	17.36	11.81	13.00		17.36	11.79
03-Jul-02	38	16.00	16.00	11.56	12.52		16	11.494
03-Jul-02	39	18.92	11.95	12.84	13.75		18.919	12.808
03-Jul-02	40	18.92	11.95	11.21	11.37		18.921	11.257
03-Jul-02	41	23.39	15.15	10.65	10.86		23.117	10.725
03-Jul-02	42	15.15	15.15	10.32	10.51		15.15	10.312
03-Jul-02	43	15.30	15.15	9.89	10.13		15.304	9.996
03-Jul-02	44	15.30	15.15	10.06	10.19		15.304	10.057
03-Jul-02	45	15.25	15.15	10.03	10.25		19.155	10.099
03-Jul-02	46	12.32	11.95	9.70	9.99		12.316	9.725
03-Jul-02	47	30.00	30.00	7.42	7.29		30	7.299
03-Jul-02	48	19.88	12.14	6.85	6.93		12.141	6.941
04-Jul-02	1	10.95	10.95	7.69	7.49		10.95	7.633
04-Jul-02	2	10.95	8.00	9.57	9.12		10.95	10.299
04-Jul-02	3	10.25	10.25	13.85	10.40		10.25	13.848
04-Jul-02	4	11.50	11.50	12.73	10.60		11.5	13.098
04-Jul-02	5	11.50	11.50	12.21	9.89		11.5	12.286
04-Jul-02	6	11.50	11.50	13.73	8.95		11.5	13.847
04-Jul-02	7	11.50	11.50	13.90	8.98		11.5	13.899
04-Jul-02	8	11.50	11.50	13.84	8.80		11.5	13.842
04-Jul-02	9	11.50	11.50	13.84	9.04		11.5	13.845
04-Jul-02	10	11.50	11.50	11.00	8.36		11.5	10.997
04-Jul-02	11	11.50	11.50	8.70	7.71		11.5	8.733
04-Jul-02	12	11.50	11.50	8.63	7.72		11.5	8.312
04-Jul-02	13	11.80	11.50	13.88	9.43		11.923	13.877
04-Jul-02	14	15.50	13.65	10.95	8.62		15.5	10.539
04-Jul-02	15	18.51	18.30	10.87	10.83		18.301	11.789

04-Jul-02	16	17.06	16.97	14.27	17.16		20.677	14.43
04-Jul-02	17	19.10	19.10	11.50	13.30		19.1	11.488
04-Jul-02	18	10.54	45.20	10.54	10.99		10.502	10.502
04-Jul-02	19	10.86	45.20	10.86	10.86		10.865	10.865
04-Jul-02	20	11.60	11.60	11.60	11.59		11.601	11.601
04-Jul-02	21	11.89	11.89	11.89	11.88		11.886	11.886
04-Jul-02	22	20.24	20.24	12.88	12.89		20.235	12.895
04-Jul-02	23	22.35	22.35	13.71	13.70		22.346	13.709
04-Jul-02	24	12.49	12.49	12.49	12.48		12.487	12.487
04-Jul-02	25	12.76	12.76	12.76	12.49		12.757	12.757
04-Jul-02	26	11.98	11.98	11.98	11.07		11.975	11.975
04-Jul-02	27	19.20	18.31	12.33	10.72		18.313	12.507
04-Jul-02	28	22.65	22.65	11.66	10.24		22.65	11.662
04-Jul-02	29	11.70	11.70	11.70	10.12		11.696	11.696
04-Jul-02	30	11.45	11.45	11.45	10.07		11.45	11.45
04-Jul-02	31	22.19	22.19	10.75	9.80		22.19	10.749
04-Jul-02	32	22.19	22.19	10.97	9.93		22.19	10.965
04-Jul-02	33	19.20	19.20	10.92	9.96		19.2	10.921
04-Jul-02	34	18.44	19.20	11.52	10.27		18.44	11.524
04-Jul-02	35	21.66	21.66	11.83	10.28		21.66	11.832
04-Jul-02	36	19.10	19.10	11.52	10.16		19.1	11.523
04-Jul-02	37	18.99	18.99	12.05	10.37		18.99	12.05
04-Jul-02	38	15.00	15.00	12.18	10.47		15	12.18
04-Jul-02	39	14.75	14.75	11.40	10.31		14.75	11.355
04-Jul-02	40	36.06	35.06	10.47	10.19		35.064	10.494
04-Jul-02	41	19.20	17.82	10.55	10.87		19.2	10.87
04-Jul-02	42	33.20	33.20	10.47	10.50		33.2	10.503
04-Jul-02	43	16.85	16.85	10.66	11.14		16.85	11.142
04-Jul-02	44	16.32	16.32	11.39	11.57		16.318	11.574
04-Jul-02	45	22.43	22.43	10.52	10.51		22.43	10.515
04-Jul-02	46	17.22	17.22	8.68	8.68		17.223	8.682
04-Jul-02	47	14.16	14.16	7.96	7.94		14.16	7.944
04-Jul-02	48	18.82	18.82	7.82	7.82		18.82	7.823
05-Jul-02	1	8.00	8.00	6.66	6.66		8	6.659
05-Jul-02	2	8.00	8.00	6.73	6.36		8	6.729
05-Jul-02	3	10.25	10.25	7.06	6.75		10.25	7.056
05-Jul-02	4	9.05	9.05	7.00	6.79		9.05	7.001
05-Jul-02	5	9.05	9.05	6.86	6.69		9.05	6.881
05-Jul-02	6	10.95	10.95	6.82	6.66		10.95	6.817
05-Jul-02	7	12.25	12.25	6.89	6.69		12.25	6.891
05-Jul-02	8	12.50	12.50	7.23	6.87		12.5	7.196
05-Jul-02	9	12.50	12.50	6.89	6.74		12.5	6.928
05-Jul-02	10	14.22	14.22	6.66	6.45		14.219	6.67
05-Jul-02	11	14.00	14.00	6.64	6.44		14	6.645
05-Jul-02	12	14.00	14.00	7.73	7.53		14	7.561
05-Jul-02	13	14.00	14.00	5.84	5.81		14	5.839
05-Jul-02	14	10.00	9.00	5.98	6.20		10	6.086
05-Jul-02	15	13.20	13.20	13.51	13.97		13.2	13.638
05-Jul-02	16	20.26	16.85	13.74	14.23		20.26	13.739
05-Jul-02	17	23.85	23.85	11.79	14.00		23.85	11.794
05-Jul-02	18	11.20	48.20	11.20	13.45		11.196	11.196
05-Jul-02	19	17.01	17.01	11.95	13.97		17.007	11.959
05-Jul-02	20	12.90	48.20	12.90	14.21		12.903	12.903
05-Jul-02	21	88.20	48.20	12.41	14.15		88.2	12.406
05-Jul-02	22	23.00	22.39	13.76	14.23		23.005	13.76
05-Jul-02	23	33.15	23.06	13.85	14.43		33.154	13.846

05-Jul-02	24	46.32	28.67	13.81	14.43		46.324	13.812
05-Jul-02	25	48.97	27.90	13.81	14.43		48.973	13.812
05-Jul-02	26	50.75	21.62	13.92	14.43		50.754	13.916
05-Jul-02	27	42.81	19.39	13.92	14.43		42.808	13.916
05-Jul-02	28	37.48	16.85	13.92	14.25		37.48	13.916
05-Jul-02	29	22.65	16.85	13.92	14.34		22.654	13.916
05-Jul-02	30	22.13	16.85	13.92	14.12		22.132	13.916
05-Jul-02	31	16.46	15.20	12.60	14.14		16.459	12.559
05-Jul-02	32	16.32	15.20	11.07	13.14		16.315	11.074
05-Jul-02	33	16.46	15.20	11.94	13.93		16.459	11.943
05-Jul-02	34	16.68	15.20	12.52	14.15		16.681	12.404
05-Jul-02	35	16.79	15.20	11.70	13.93		16.789	11.699
05-Jul-02	36	16.32	15.20	11.27	13.77		16.315	11.266
05-Jul-02	37	13.17	12.00	13.27	14.23		13.171	13.322
05-Jul-02	38	13.93	12.16	13.56	14.23		13.927	13.562
05-Jul-02	39	16.95	16.95	9.98	9.98		16.95	9.98
05-Jul-02	40	16.95	16.95	9.25	9.32		16.95	9.321
05-Jul-02	41	23.20	23.20	8.68	8.72		23.2	8.72
05-Jul-02	42	107.20	106.08	8.57	8.71		106.075	8.712
05-Jul-02	43	8.00	8.00	7.71	7.71		8	7.713
05-Jul-02	44	20.15	20.15	7.79	7.79		20.15	7.789
05-Jul-02	45	20.15	11.95	8.68	8.72		20.15	8.68
05-Jul-02	46	14.71	8.75	8.17	8.34		12.836	8.177
05-Jul-02	47	27.42	23.91	9.09	9.09		27.142	9.093
05-Jul-02	48	35.00	35.00	6.28	4.91		35	6.282
06-Jul-02	1	10.00	10.00	5.99	3.71		10	5.986
06-Jul-02	2	21.97	13.32	6.21	3.49		22.089	6.21
06-Jul-02	3	20.30	8.99	20.30	3.58		20.3	20.3
06-Jul-02	4	18.32	8.99	5.99	4.96		19.21	5.99
06-Jul-02	5	18.36	8.99	5.99	5.59		18.357	5.99
06-Jul-02	6	17.44	9.15	5.99	5.47		17.439	5.99
06-Jul-02	7	16.69	8.99	6.84	5.06		16.904	6.845
06-Jul-02	8	16.14	10.75	7.00	5.15		16.138	7
06-Jul-02	9	16.21	10.75	5.99	4.78		16.207	5.99
06-Jul-02	10	17.10	10.25	7.10	4.98		17.097	7.103
06-Jul-02	11	17.61	10.25	8.90	5.79		17.615	8.9
06-Jul-02	12	21.38	12.75	5.99	4.63		21.38	5.99
06-Jul-02	13	26.93	10.39	10.50	4.66		26.932	10.5
06-Jul-02	14	20.52	10.18	20.52	3.31		20.525	20.525
06-Jul-02	15	18.00	13.22	13.51	7.25		17.766	13.513
06-Jul-02	16	17.49	13.22	13.51	8.95		17.296	13.513
06-Jul-02	17	19.24	13.22	13.51	13.91		27.136	13.513
06-Jul-02	18	18.97	13.22	13.51	13.90		21.877	13.513
06-Jul-02	19	17.64	13.22	13.41	13.72		23.269	13.41
06-Jul-02	20	14.11	13.30	13.44	13.59		14.108	13.44
06-Jul-02	21	13.22	13.22	12.94	12.93		13.22	12.937
06-Jul-02	22	22.63	13.22	12.88	12.89		22.629	12.875
06-Jul-02	23	17.30	13.34	13.31	13.31		17.295	13.308
06-Jul-02	24	21.51	13.94	13.35	13.48		21.507	13.351
06-Jul-02	25	14.31	14.31	12.29	12.29		14.312	12.293
06-Jul-02	26	13.22	13.22	11.87	11.86		13.22	11.867
06-Jul-02	27	13.22	13.22	10.60	10.59		13.22	10.6
06-Jul-02	28	26.70	26.70	11.99	11.99		26.696	11.994
06-Jul-02	29	26.22	26.22	13.27	13.27		26.22	13.268
06-Jul-02	30	10.79	10.79	10.79	10.73		10.735	10.735
06-Jul-02	31	8.71	8.71	8.71	8.71		8.712	8.712

06-Jul-02	32	8.67	8.67	8.67	8.67		8.669	8.669
06-Jul-02	33	16.38	16.38	9.11	9.10		16.383	9.107
06-Jul-02	34	9.05	9.05	9.05	9.04		9.05	9.05
06-Jul-02	35	17.22	17.22	9.61	9.60		17.22	9.61
06-Jul-02	36	9.56	9.56	9.56	9.56		9.56	9.56
06-Jul-02	37	9.39	9.39	9.39	9.39		9.393	9.393
06-Jul-02	38	9.29	9.29	9.29	9.28		9.287	9.287
06-Jul-02	39	11.50	11.00	9.50	9.63		11.498	9.496
06-Jul-02	40	11.80	11.00	9.37	9.71		11.804	9.372
06-Jul-02	41	15.05	14.22	9.16	9.42		15.049	9.164
06-Jul-02	42	14.91	14.22	8.46	8.65		14.896	8.468
06-Jul-02	43	14.65	14.22	9.21	9.91		14.651	9.277
06-Jul-02	44	15.20	14.22	8.51	9.93		15.202	8.471
06-Jul-02	45	14.22	14.22	8.15	8.59		14.22	8.097
06-Jul-02	46	11.00	11.00	8.07	8.34		11	8.073
06-Jul-02	47	45.00	45.00	7.06	6.94		45	6.945
06-Jul-02	48	45.00	45.00	7.57	3.81		45	7.574
07-Jul-02	1	45.00	45.00	4.25	3.83		45	4.25
07-Jul-02	2	11.62	10.25	5.36	4.93		12.92	5.359
07-Jul-02	3	15.60	9.25	6.85	6.62		16.012	6.85
07-Jul-02	4	18.72	9.25	6.85	6.62		18.717	6.85
07-Jul-02	5	16.90	11.25	6.85	6.62		17.574	6.85
07-Jul-02	6	18.27	12.75	6.85	6.71		18.266	6.85
07-Jul-02	7	17.12	5.00	4.25	5.84		17.121	4.25
07-Jul-02	8	16.53	5.00	4.25	5.50		16.531	4.25
07-Jul-02	9	15.28	5.00	4.25	5.23		15.285	4.25
07-Jul-02	10	15.61	5.00	4.25	5.17		15.608	4.25
07-Jul-02	11	17.33	13.25	4.25	5.10		17.333	4.25
07-Jul-02	12	16.64	13.25	4.25	4.82		16.635	4.25
07-Jul-02	13	16.13	13.25	4.25	4.09		16.126	4.25
07-Jul-02	14	13.55	13.25	4.25	2.80		13.648	4.25
07-Jul-02	15	13.25	13.25	11.00	3.66		13.25	10.933
07-Jul-02	16	13.25	13.25	12.60	4.33		13.25	12.598
07-Jul-02	17	14.51	13.25	12.60	5.91		14.709	12.598
07-Jul-02	18	13.33	13.25	12.74	5.10		13.334	12.741
07-Jul-02	19	12.61	10.00	12.70	7.37		12.611	12.705
07-Jul-02	20	21.50	13.55	12.93	12.97		21.498	12.93
07-Jul-02	21	24.67	22.12	12.93	13.25		24.339	12.93
07-Jul-02	22	24.63	23.01	12.81	13.09		24.633	12.812
07-Jul-02	23	22.96	22.96	13.31	14.25		22.96	13.31
07-Jul-02	24	18.15	18.13	13.16	14.25		18.134	13.257
07-Jul-02	25	18.12	18.12	11.86	13.50		18.12	11.86
07-Jul-02	26	18.15	18.15	11.24	12.14		18.145	11.237
07-Jul-02	27	14.51	12.81	13.33	13.39		15.002	13.332
07-Jul-02	28	16.04	12.60	13.33	13.56		16.042	13.327
07-Jul-02	29	20.11	12.50	13.32	13.90		20.109	13.321
07-Jul-02	30	15.10	15.10	12.29	12.29		15.1	12.294
07-Jul-02	31	17.50	17.50	10.09	10.09		17.5	10.091
07-Jul-02	32	9.71	9.71	9.71	9.71		9.712	9.712
07-Jul-02	33	26.95	26.95	10.06	10.06		26.95	10.064
07-Jul-02	34	26.95	26.95	9.75	9.75		26.95	9.754
07-Jul-02	35	13.92	13.92	9.95	9.95		13.917	9.958
07-Jul-02	36	15.00	15.00	10.30	10.30		15	10.303
07-Jul-02	37	9.55	29.17	9.55	9.54		29.17	9.546
07-Jul-02	38	9.75	9.75	9.75	9.74		9.749	9.749
07-Jul-02	39	14.83	14.17	10.44	10.85		14.834	10.596

07-Jul-02	40	14.93	14.17	11.46	12.74		14.928	12.462
07-Jul-02	41	21.77	19.57	12.48	12.80		22.019	12.482
07-Jul-02	42	20.60	17.04	12.72	12.80		20.604	12.717
07-Jul-02	43	17.92	15.00	12.53	12.80		20.005	12.533
07-Jul-02	44	18.31	17.16	12.54	12.80		18.517	12.538
07-Jul-02	45	14.99	14.17	12.45	12.73		14.991	12.447
07-Jul-02	46	15.25	14.17	11.72	12.68		15.249	11.94
07-Jul-02	47	18.81	18.81	6.49	6.49		18.81	6.491
07-Jul-02	48	19.74	19.74	5.61	4.78		19.74	5.579
08-Jul-02	1	18.41	18.41	6.63	4.69		18.41	6.61
08-Jul-02	2	16.00	16.00	7.07	4.02		16	7.068
08-Jul-02	3	13.25	13.25	6.85	4.52		13.25	6.85
08-Jul-02	4	14.74	13.25	6.85	4.99		14.654	6.85
08-Jul-02	5	19.03	13.25	6.85	5.10		19.026	6.85
08-Jul-02	6	20.93	13.25	5.35	5.02		20.927	5.35
08-Jul-02	7	21.19	13.25	6.85	5.20		21.19	6.85
08-Jul-02	8	24.19	13.75	6.85	5.35		24.224	6.85
08-Jul-02	9	28.79	13.75	6.85	5.29		28.793	6.85
08-Jul-02	10	26.51	13.75	6.85	5.27		26.512	6.85
08-Jul-02	11	30.60	12.75	6.85	5.09		30.604	6.85
08-Jul-02	12	28.07	12.75	6.85	4.81		28.068	6.85
08-Jul-02	13	10.00	10.00	6.45	4.91		10	6.254
08-Jul-02	14	10.00	10.00	6.57	6.45		10	6.57
08-Jul-02	15	21.20	21.20	11.48	13.44		21.2	12.275
08-Jul-02	16	24.83	21.18	14.30	14.78		44.988	14.3
08-Jul-02	17	53.31	27.99	14.30	14.78		72.903	14.3
08-Jul-02	18	21.89	22.11	14.10	14.78		21.886	14.096
08-Jul-02	19	25.22	31.16	14.17	14.78		25.907	14.171
08-Jul-02	20	25.58	30.09	14.17	14.78		28.843	14.171
08-Jul-02	21	26.84	28.44	14.17	14.78		27.379	14.171
08-Jul-02	22	25.30	27.98	14.17	14.78		26.978	14.171
08-Jul-02	23	23.91	27.90	14.14	14.78		26.452	14.14
08-Jul-02	24	26.29	27.88	14.11	14.78		26.428	14.11
08-Jul-02	25	27.48	28.93	14.17	14.78		29.226	14.171
08-Jul-02	26	28.87	29.52	14.34	15.43		28.873	14.343
08-Jul-02	27	31.85	30.79	14.07	14.78		31.629	14.075
08-Jul-02	28	30.70	22.92	14.17	14.78		30.66	14.171
08-Jul-02	29	21.07	21.07	14.17	14.33		21.07	14.171
08-Jul-02	30	28.27	21.07	14.17	14.55		28.271	14.171
08-Jul-02	31	28.22	28.22	11.71	11.70		28.22	11.706
08-Jul-02	32	19.22	19.22	11.50	11.46		19.22	11.498
08-Jul-02	33	19.97	19.22	14.09	14.39		19.968	14.087
08-Jul-02	34	35.72	35.72	11.98	11.97		35.721	11.976
08-Jul-02	35	43.04	39.63	14.09	14.75		43.045	14.088
08-Jul-02	36	26.29	25.22	14.09	14.56		26.289	14.092
08-Jul-02	37	22.00	21.95	13.30	13.69		21.95	13.696
08-Jul-02	38	22.22	21.25	14.09	14.78		22.161	14.086
08-Jul-02	39	23.58	22.65	14.36	14.80		23.775	14.362
08-Jul-02	40	21.41	21.03	14.39	14.80		21.399	14.393
08-Jul-02	41	24.33	23.85	14.38	14.80		24.245	14.378
08-Jul-02	42	22.88	19.48	14.36	14.80		23.517	14.362
08-Jul-02	43	24.37	24.29	14.26	14.80		24.971	14.256
08-Jul-02	44	28.83	26.11	14.28	14.80		28.83	14.28
08-Jul-02	45	9.52	9.52	9.52	9.51		9.521	9.521
08-Jul-02	46	22.98	22.98	7.40	7.39		22.98	7.398
08-Jul-02	47	21.95	21.95	6.05	6.04		21.95	6.049

08-Jul-02	48	29.95	29.95	5.01	4.98		29.95	4.977
09-Jul-02	1	12.70	12.70	4.95	4.95		12.7	4.946
09-Jul-02	2	9.70	9.70	4.95	5.08		9.7	5.078
09-Jul-02	3	11.48	11.48	4.30	4.30		11.476	4.304
09-Jul-02	4	18.82	18.82	4.91	4.91		18.817	4.909
09-Jul-02	5	13.25	13.25	5.46	4.92		13.25	5.456
09-Jul-02	6	15.88	13.25	5.02	4.76		15.88	5.016
09-Jul-02	7	12.16	11.75	3.70	4.75		12.163	3.7
09-Jul-02	8	12.92	11.75	8.00	5.28		12.923	8
09-Jul-02	9	11.75	11.75	8.00	5.03		11.75	8
09-Jul-02	10	13.25	13.25	3.70	4.57		13.25	3.7
09-Jul-02	11	13.38	13.25	3.70	4.75		13.381	3.7
09-Jul-02	12	13.25	13.25	3.70	4.75		13.25	3.7
09-Jul-02	13	13.97	13.25	3.70	4.75		13.967	3.7
09-Jul-02	14	24.58	19.98	3.70	4.75		28.419	3.7
09-Jul-02	15	23.99	23.90	14.28	96.41		26.395	14.277
09-Jul-02	16	24.52	26.46	14.74	14.78		24.519	14.74
09-Jul-02	17	68.46	34.62	14.74	14.78		68.455	14.74
09-Jul-02	18	37.76	32.28	14.48	14.78		37.759	14.482
09-Jul-02	19	37.20	32.58	14.48	14.78		37.201	14.482
09-Jul-02	20	20.90	23.82	14.56	14.78		22.517	14.556
09-Jul-02	21	21.17	21.17	14.59	14.75		21.17	14.613
09-Jul-02	22	23.01	28.33	14.73	14.78		23.014	14.728
09-Jul-02	23	20.41	25.60	14.73	14.78		20.406	14.728
09-Jul-02	24	28.82	31.67	14.73	14.78		28.821	14.728
09-Jul-02	25	193.78	49.05	14.52	14.78		193.782	14.519
09-Jul-02	26	177.55	46.86	14.52	14.78		177.547	14.518
09-Jul-02	27	57.74	33.53	14.53	14.78		59.418	14.528
09-Jul-02	28	21.72	23.72	14.52	14.78		21.719	14.517
09-Jul-02	29	20.36	21.69	14.52	14.78		20.364	14.518
09-Jul-02	30	22.24	28.04	14.52	14.78		22.236	14.519
09-Jul-02	31	20.72	20.72	12.92	14.78		20.72	12.916
09-Jul-02	32	20.72	20.72	12.33	14.77		20.72	12.33
09-Jul-02	33	20.72	20.72	12.86	14.75		20.72	12.858
09-Jul-02	34	22.47	22.47	12.25	14.74		22.47	12.251
09-Jul-02	35	11.21	303.22	11.21	13.45		11.159	11.159
09-Jul-02	36	20.62	20.62	12.40	14.74		20.62	12.301
09-Jul-02	37	21.44	17.47	14.52	14.78		21.774	14.522
09-Jul-02	38	17.35	17.35	14.50	14.50		17.35	14.5
09-Jul-02	39	18.69	20.04	9.35	11.56		20.209	9.354
09-Jul-02	40	24.94	24.94	8.65	8.65		24.94	8.647
09-Jul-02	41	28.95	23.02	8.99	9.28		23.019	9.276
09-Jul-02	42	8.35	8.35	8.35	8.35		8.354	8.354
09-Jul-02	43	8.58	116.58	8.58	8.62		116.58	8.624
09-Jul-02	44	37.27	37.27	10.26	10.26		37.271	10.26
09-Jul-02	45	19.22	19.22	10.10	11.52		19.22	11.521
09-Jul-02	46	16.00	16.00	7.88	7.89		16	7.891
09-Jul-02	47	16.00	16.00	6.58	6.57		16	6.575
09-Jul-02	48	15.86	15.86	5.88	5.88		15.857	5.881
10-Jul-02	1	17.20	17.20	5.35	5.36		17.2	5.354
10-Jul-02	2	29.14	29.14	4.07	4.08		29.143	4.075
10-Jul-02	3	17.30	17.30	4.27	4.27		17.3	4.27
10-Jul-02	4	16.10	16.10	5.94	5.94		16.1	5.936
10-Jul-02	5	12.50	12.50	6.07	6.07		12.5	6.068
10-Jul-02	6	12.50	12.50	5.30	5.35		12.5	5.345
10-Jul-02	7	15.70	15.70	5.54	5.55		15.7	5.543

10-Jul-02	8	15.70	15.70	5.90	5.90		15.7	5.897
10-Jul-02	9	16.10	16.10	5.17	5.17		16.1	5.169
10-Jul-02	10	16.10	16.10	3.57	2.68		16.1	3.571
10-Jul-02	11	8.00	8.00	2.43	1.78		8	2.432
10-Jul-02	12	8.00	8.00	3.78	3.86		8	3.844
10-Jul-02	13	8.00	8.00	4.96	5.01		8	5.01
10-Jul-02	14	15.70	15.70	5.73	5.73		15.7	5.734
10-Jul-02	15	19.12	19.12	9.41	9.51		19.12	9.515
10-Jul-02	16	19.12	19.12	9.32	9.31		19.12	9.313
10-Jul-02	17	19.15	19.15	9.83	10.04		19.148	10.045
10-Jul-02	18	23.22	23.22	8.91	8.90		23.22	8.906
10-Jul-02	19	19.22	19.22	9.11	9.11		19.22	9.11
10-Jul-02	20	18.86	19.22	9.65	9.64		18.86	9.655
10-Jul-02	21	18.93	19.56	9.43	9.42		18.927	9.433
10-Jul-02	22	22.06	24.59	9.57	9.55		22.06	9.568
10-Jul-02	23	29.46	32.62	9.39	9.37		29.461	9.386
10-Jul-02	24	29.63	32.79	9.10	9.10		29.626	9.103
10-Jul-02	25	33.22	33.22	9.05	9.05		33.22	9.05
10-Jul-02	26	28.96	28.96	9.02	9.02		28.957	9.021
10-Jul-02	27	27.50	25.02	9.19	9.23		25.023	9.23
10-Jul-02	28	9.14	9.14	9.14	9.14		9.139	9.139
10-Jul-02	29	9.02	9.02	9.02	9.01		9.018	9.018
10-Jul-02	30	8.31	8.31	8.31	8.31		8.311	8.311
10-Jul-02	31	8.60	8.60	8.60	8.60		8.601	8.601
10-Jul-02	32	8.70	8.70	8.70	8.41		8.701	8.701
10-Jul-02	33	8.86	8.86	8.86	8.78		8.785	8.785
10-Jul-02	34	8.71	8.71	8.71	8.63		8.633	8.633
10-Jul-02	35	8.93	8.93	8.93	8.92		8.929	8.929
10-Jul-02	36	8.46	8.46	8.46	8.45		8.451	8.451
10-Jul-02	37	8.68	20.80	8.68	8.66		20.8	8.666
10-Jul-02	38	23.00	23.00	9.48	9.35		23	9.357
10-Jul-02	39	10.00	0.00	8.31	8.52		10	8.362
10-Jul-02	40	19.50	19.50	8.60	8.74		19.5	8.742
10-Jul-02	41	8.30	124.02	8.30	8.33		124.02	8.328
10-Jul-02	42	8.24	8.24	8.24	8.24		8.236	8.236
10-Jul-02	43	8.00	8.00	7.91	7.91		8	7.913
10-Jul-02	44	16.72	16.72	8.13	8.16		16.72	8.163
10-Jul-02	45	17.24	17.24	7.95	7.99		17.24	7.99
10-Jul-02	46	20.00	20.00	7.51	7.51		20	7.506
10-Jul-02	47	45.00	45.00	7.28	7.28		45	7.278
10-Jul-02	48	33.76	33.76	6.64	6.63		33.761	6.635
11-Jul-02	1	15.50	15.50	5.79	5.79		15.5	5.794
11-Jul-02	2	15.10	15.10	5.91	5.91		15.1	5.909
11-Jul-02	3	14.41	14.41	6.03	6.03		14.412	6.031
11-Jul-02	4	13.75	13.75	5.98	5.98		13.75	5.98
11-Jul-02	5	12.25	12.25	5.85	5.85		12.25	5.848
11-Jul-02	6	12.25	12.25	5.72	5.72		12.25	5.722
11-Jul-02	7	15.10	15.10	5.32	5.32		15.1	5.323
11-Jul-02	8	15.10	15.10	5.43	5.43		15.1	5.43
11-Jul-02	9	15.10	15.10	5.43	5.43		15.1	5.429
11-Jul-02	10	15.10	15.10	5.39	5.40		15.1	5.395
11-Jul-02	11	15.10	15.10	6.62	6.62		15.1	6.623
11-Jul-02	12	15.10	15.10	6.90	6.90		15.1	6.897
11-Jul-02	13	15.10	15.10	7.19	7.19		15.1	7.187
11-Jul-02	14	15.10	15.10	8.28	8.28		15.1	8.282
11-Jul-02	15	14.62	14.62	5.91	6.62		14.62	6.624



11-Jul-02	16	14.32	14.32	7.81	7.82		14.32	7.821
11-Jul-02	17	25.17	25.17	7.87	8.09		25.17	7.873
11-Jul-02	18	8.00	38.02	7.97	8.00		8	7.973
11-Jul-02	19	23.19	20.54	8.16	8.28		20.539	8.163
11-Jul-02	20	19.12	18.86	8.82	9.54		18.856	8.886
11-Jul-02	21	9.46	38.02	9.46	10.93		9.46	9.46
11-Jul-02	22	18.67	33.38	8.64	9.07		18.67	8.644
11-Jul-02	23	18.67	18.17	10.17	11.93		18.163	10.228
11-Jul-02	24	18.59	28.42	9.13	11.93		18.594	9.129
11-Jul-02	25	8.44	38.02	8.44	8.78		8.437	8.437
11-Jul-02	26	8.76	38.02	8.76	9.07		8.761	8.761
11-Jul-02	27	23.13	21.41	8.85	8.96		21.413	8.876
11-Jul-02	28	9.38	9.38	9.38	9.38		9.383	9.383
11-Jul-02	29	8.26	8.26	8.26	8.25		8.257	8.257
11-Jul-02	30	8.11	8.11	8.11	8.11		8.111	8.111
11-Jul-02	31	18.78	18.78	8.25	8.25		18.782	8.254
11-Jul-02	32	19.13	19.13	8.36	8.37		19.128	8.37
11-Jul-02	33	17.59	17.59	8.82	8.82		17.587	8.823
11-Jul-02	34	16.77	16.77	9.23	9.14		16.77	9.141
11-Jul-02	35	9.07	9.07	9.07	9.03		9.039	9.039
11-Jul-02	36	25.22	22.70	8.40	8.37		22.698	8.373
11-Jul-02	37	16.00	16.00	8.28	8.20		16	8.207
11-Jul-02	38	27.67	27.67	8.14	8.14		27.665	8.14
11-Jul-02	39	15.90	15.69	8.23	8.24		15.686	8.227
11-Jul-02	40	24.63	24.63	8.04	8.02		24.63	8.021
11-Jul-02	41	27.49	78.10	8.64	8.68		78.102	8.681
11-Jul-02	42	8.07	8.07	8.07	8.07		8.066	8.066
11-Jul-02	43	8.00	8.00	7.80	7.80		8	7.802
11-Jul-02	44	8.00	8.00	7.76	7.76		8	7.765
11-Jul-02	45	8.06	18.94	8.06	8.38		18.944	8.382
11-Jul-02	46	22.94	22.94	6.97	7.25		22.938	7.253
11-Jul-02	47	15.00	15.00	6.54	6.68		15	6.677
11-Jul-02	48	15.00	15.00	3.38	3.72		15	3.719
12-Jul-02	1	16.90	16.90	3.24	3.26		16.9	3.245
12-Jul-02	2	10.23	10.23	3.12	3.13		10.231	3.118
12-Jul-02	3	14.45	14.45	4.94	4.95		14.45	4.944
12-Jul-02	4	14.45	14.45	4.30	4.30		14.45	4.3
12-Jul-02	5	14.45	14.45	4.72	4.73		14.45	4.725
12-Jul-02	6	14.45	14.45	4.79	4.79		14.45	4.785
12-Jul-02	7	14.45	14.45	4.78	4.77		14.45	4.77
12-Jul-02	8	14.45	14.45	4.40	4.40		14.45	4.398
12-Jul-02	9	14.45	14.45	4.17	4.17		14.45	4.171
12-Jul-02	10	14.45	14.45	3.39	3.39		14.45	3.393
12-Jul-02	11	14.45	14.45	2.49	2.49		14.45	2.487
12-Jul-02	12	14.45	14.45	3.25	3.25		14.45	3.246
12-Jul-02	13	15.05	15.05	5.64	5.62		15.05	5.641
12-Jul-02	14	14.45	14.45	7.56	7.34		14.45	7.354
12-Jul-02	15	20.75	19.11	13.93	14.71		20.789	13.932
12-Jul-02	16	23.12	21.35	13.92	14.52		23.123	13.923
12-Jul-02	17	32.31	23.82	14.04	14.71		32.313	14.037
12-Jul-02	18	31.47	20.46	14.04	14.71		31.469	14.038
12-Jul-02	19	22.51	22.51	11.88	11.87		22.51	11.878
12-Jul-02	20	38.22	38.22	11.51	11.51		38.22	11.514
12-Jul-02	21	38.22	38.22	10.88	10.87		38.22	10.877
12-Jul-02	22	38.22	38.22	10.73	10.72		38.22	10.725
12-Jul-02	23	38.22	38.22	10.07	10.06		38.22	10.068

12-Jul-02	24	38.22	38.22	9.22	9.22		38.22	9.222
12-Jul-02	25	38.22	38.22	9.26	9.25		38.22	9.259
12-Jul-02	26	20.34	20.34	9.21	9.20		20.34	9.209
12-Jul-02	27	25.08	25.08	9.11	9.10		25.08	9.106
12-Jul-02	28	26.07	26.07	9.40	9.39		26.07	9.396
12-Jul-02	29	9.17	9.17	9.17	9.17		9.173	9.173
12-Jul-02	30	8.55	8.55	8.55	8.55		8.551	8.551
12-Jul-02	31	8.00	8.00	7.72	7.72		8	7.722
12-Jul-02	32	8.42	8.42	8.42	8.42		8.422	8.422
12-Jul-02	33	8.20	8.20	8.20	8.20		8.203	8.203
12-Jul-02	34	18.22	18.22	8.02	8.02		18.22	8.022
12-Jul-02	35	18.22	18.22	8.17	8.17		18.22	8.174
12-Jul-02	36	21.22	21.22	8.21	8.21		21.22	8.209
12-Jul-02	37	8.36	8.36	8.36	8.36		8.364	8.364
12-Jul-02	38	8.59	8.59	8.59	6.24		8	6.245
12-Jul-02	39	19.29	19.29	7.47	7.47		19.294	7.468
12-Jul-02	40	15.00	14.62	8.42	8.45		14.621	8.453
12-Jul-02	41	22.31	22.31	7.85	7.95		22.31	7.947
12-Jul-02	42	19.22	18.03	8.09	8.15		18.032	8.154
12-Jul-02	43	17.97	17.97	8.21	8.23		17.97	8.226
12-Jul-02	44	17.67	17.67	8.39	8.45		17.67	8.451
12-Jul-02	45	33.22	33.22	8.18	8.23		33.22	8.233
12-Jul-02	46	12.00	12.00	8.43	8.44		12	8.444
12-Jul-02	47	14.20	14.20	8.72	8.72		14.2	8.718
12-Jul-02	48	30.00	30.00	8.15	7.96		30	8.131
13-Jul-02	1	17.91	17.91	6.89	5.51		17.91	6.887
13-Jul-02	2	10.00	10.00	5.73	4.60		10	5.732
13-Jul-02	3	17.91	17.91	5.71	4.48		17.91	5.708
13-Jul-02	4	20.48	20.48	5.41	4.43		20.475	5.41
13-Jul-02	5	10.95	10.95	5.35	4.35		10.95	5.39
13-Jul-02	6	10.00	10.00	4.88	3.87		10	4.882
13-Jul-02	7	10.00	10.00	5.23	3.73		10	5.233
13-Jul-02	8	10.00	10.00	5.05	3.68		10	5.054
13-Jul-02	9	10.00	10.00	4.55	3.44		10	4.622
13-Jul-02	10	10.00	10.00	3.96	2.83		10	3.963
13-Jul-02	11	10.00	10.00	4.07	3.03		10	4.066
13-Jul-02	12	10.00	10.00	3.92	2.93		10	3.974
13-Jul-02	13	10.00	10.00	8.09	4.07		10	8.089
13-Jul-02	14	10.00	10.00	6.18	4.43		10	6.181
13-Jul-02	15	20.35	13.22	7.31	7.00		20.35	7.311
13-Jul-02	16	8.20	8.20	8.20	7.95		8.203	8.203
13-Jul-02	17	13.22	13.22	9.42	9.44		13.22	9.452
13-Jul-02	18	10.71	10.71	10.71	10.70		10.706	10.706
13-Jul-02	19	11.11	11.11	11.11	11.10		11.108	11.108
13-Jul-02	20	11.40	11.40	11.40	11.39		11.399	11.399
13-Jul-02	21	11.14	11.14	11.14	11.13		11.137	11.137
13-Jul-02	22	11.14	11.14	11.14	11.13		11.136	11.136
13-Jul-02	23	11.03	11.03	11.03	11.02		11.031	11.031
13-Jul-02	24	10.84	10.84	10.84	10.84		10.844	10.844
13-Jul-02	25	10.30	10.30	10.30	10.29		10.297	10.297
13-Jul-02	26	9.80	9.80	9.80	9.79		9.798	9.798
13-Jul-02	27	20.22	20.22	9.77	9.80		20.22	9.805
13-Jul-02	28	9.11	9.11	9.11	9.10		9.107	9.107
13-Jul-02	29	26.22	26.22	8.81	8.80		26.22	8.805
13-Jul-02	30	8.41	8.41	8.41	8.41		8.412	8.412
13-Jul-02	31	8.00	8.00	7.64	7.64		8	7.641

13-Jul-02	32	8.00	8.00	7.51	7.51		8	7.514
13-Jul-02	33	8.00	8.00	7.59	7.59		8	7.591
13-Jul-02	34	8.00	8.00	7.57	7.57		8	7.575
13-Jul-02	35	8.00	8.00	7.66	7.66		8	7.659
13-Jul-02	36	8.00	8.00	7.71	7.71		8	7.711
13-Jul-02	37	8.00	8.00	7.51	7.51		8	7.513
13-Jul-02	38	8.00	8.00	7.77	7.77		8	7.767
13-Jul-02	39	18.00	18.00	7.10	7.10		18	7.104
13-Jul-02	40	18.00	18.00	6.99	6.99		18	6.988
13-Jul-02	41	21.22	21.22	6.68	6.67		21.22	6.675
13-Jul-02	42	21.22	21.22	6.45	6.45		21.22	6.451
13-Jul-02	43	21.22	21.22	7.36	7.36		21.22	7.361
13-Jul-02	44	14.47	14.47	7.78	7.81		14.47	7.814
13-Jul-02	45	14.47	14.47	7.62	7.64		14.47	7.64
13-Jul-02	46	18.00	18.00	7.27	7.03		18	7.269
13-Jul-02	47	13.08	13.08	7.66	7.45		13.084	7.693
13-Jul-02	48	15.00	15.00	7.02	6.21		15	7.599
14-Jul-02	1	15.00	15.00	5.02	5.03		15	5.019
14-Jul-02	2	14.50	14.50	4.75	4.85		14.5	4.843
14-Jul-02	3	14.50	14.50	3.92	3.94		14.5	3.924
14-Jul-02	4	12.83	12.83	3.32	3.35		12.829	3.337
14-Jul-02	5	11.80	11.80	5.14	5.14		11.8	5.139
14-Jul-02	6	14.70	14.70	6.00	6.00		14.696	6
14-Jul-02	7	15.71	15.70	6.00	6.00		15.708	6
14-Jul-02	8	15.32	15.32	6.00	6.00		15.321	6
14-Jul-02	9	16.44	16.45	6.00	6.00		16.445	6
14-Jul-02	10	16.48	15.87	7.98	20.00		16.068	7.98
14-Jul-02	11	15.71	15.20	8.98	16.93		15.345	8.981
14-Jul-02	12	14.89	14.89	9.99	9.99		14.889	9.99
14-Jul-02	13	14.86	16.28	6.00	6.00		16.277	6
14-Jul-02	14	15.20	15.00	10.00	16.70		15.204	10
14-Jul-02	15	13.56	11.80	13.17	13.44		13.75	13.174
14-Jul-02	16	14.48	13.26	13.04	13.50		14.485	13.04
14-Jul-02	17	15.36	14.52	13.07	13.50		15.362	13.073
14-Jul-02	18	14.53	14.00	13.17	13.34		14.528	13.169
14-Jul-02	19	14.50	14.50	12.35	12.34		14.5	12.345
14-Jul-02	20	14.72	14.50	13.14	13.43		14.715	13.138
14-Jul-02	21	19.64	18.19	13.14	13.36		19.959	13.138
14-Jul-02	22	14.14	14.14	11.16	11.18		14.14	11.187
14-Jul-02	23	17.09	14.14	13.76	13.95		17.819	13.758
14-Jul-02	24	21.77	21.77	13.04	12.86		21.772	12.867
14-Jul-02	25	38.19	38.19	12.52	12.52		38.19	12.523
14-Jul-02	26	38.19	38.19	11.65	11.64		38.19	11.645
14-Jul-02	27	11.80	11.80	10.97	10.96		11.8	10.972
14-Jul-02	28	10.16	10.16	10.16	9.91		9.917	9.917
14-Jul-02	29	15.00	15.00	11.52	11.51		15	11.519
14-Jul-02	30	10.53	10.53	10.53	10.52		10.527	10.527
14-Jul-02	31	9.05	9.05	9.05	9.05		9.054	9.054
14-Jul-02	32	15.00	15.00	8.60	8.59		15	8.6
14-Jul-02	33	15.00	15.00	8.59	8.58		15	8.586
14-Jul-02	34	8.79	8.79	8.79	8.69		8.701	8.701
14-Jul-02	35	17.90	15.85	9.03	8.92		17.9	8.903
14-Jul-02	36	14.00	10.92	9.09	9.11		14	9.074
14-Jul-02	37	9.53	9.53	9.53	9.52		9.527	9.527
14-Jul-02	38	39.19	39.19	10.79	10.78		39.19	10.789
14-Jul-02	39	27.04	27.04	8.13	8.13		27.04	8.132

14-Jul-02	40	19.84	19.84	7.74	7.76		19.844	7.762
14-Jul-02	41	21.19	10.19	7.81	7.84		21.19	7.806
14-Jul-02	42	25.58	25.58	7.73	7.73		25.578	7.727
14-Jul-02	43	27.04	27.04	8.08	8.22		27.04	8.222
14-Jul-02	44	27.04	27.04	8.52	8.80		27.04	8.796
14-Jul-02	45	21.04	21.86	11.62	11.62		21.859	11.617
14-Jul-02	46	23.30	23.30	7.76	7.76		23.3	7.76
14-Jul-02	47	19.88	19.88	18.86	18.86		19.88	18.864
14-Jul-02	48	19.91	19.91	5.16	4.98		19.914	4.984



Date	Period	C15Spread	P90Spread
02-Jul-02	1	33.77	34.78
02-Jul-02	2	0.60	3.46
02-Jul-02	3	-0.06	3.32
02-Jul-02	4	2.39	4.95
02-Jul-02	5	2.05	4.35
02-Jul-02	6	1.89	4.09
02-Jul-02	7	1.63	3.70
02-Jul-02	8	-1.28	2.71
02-Jul-02	9	0.86	3.34
02-Jul-02	10	2.50	4.10
02-Jul-02	11	1.92	3.60
02-Jul-02	12	2.85	4.82
02-Jul-02	13	3.64	3.97
02-Jul-02	14	4.38	4.39
02-Jul-02	15	11.77	9.97
02-Jul-02	16	68.24	42.37
02-Jul-02	17	69.13	42.64
02-Jul-02	18	5.25	4.30
02-Jul-02	19	5.21	4.12
02-Jul-02	20	9.03	7.37
02-Jul-02	21	9.08	7.14
02-Jul-02	22	21.93	20.15
02-Jul-02	23	8.36	7.49
02-Jul-02	24	8.40	7.39
02-Jul-02	25	7.40	6.31
02-Jul-02	26	7.65	6.57
02-Jul-02	27	0.00	41.88
02-Jul-02	28	0.00	41.89
02-Jul-02	29	8.87	7.92
02-Jul-02	30	9.34	8.09
02-Jul-02	31	0.00	42.22
02-Jul-02	32	9.33	8.28
02-Jul-02	33	7.51	6.34
02-Jul-02	34	7.51	5.77
02-Jul-02	35	9.35	7.80
02-Jul-02	36	9.24	7.85
02-Jul-02	37	5.65	-4.41
02-Jul-02	38	4.21	0.72
02-Jul-02	39	4.77	0.90
02-Jul-02	40	3.16	-1.55
02-Jul-02	41	6.85	5.15
02-Jul-02	42	5.96	4.00
02-Jul-02	43	13.20	-2.71
02-Jul-02	44	26.86	15.21
02-Jul-02	45	8.60	7.62
02-Jul-02	46	0.00	39.06
02-Jul-02	47	-0.15	-0.43
02-Jul-02	48	-1.64	0.65
03-Jul-02	1	3.87	0.77
03-Jul-02	2	5.96	-0.07
03-Jul-02	3	2.44	-2.82
03-Jul-02	4	0.30	-3.42
03-Jul-02	5	-3.21	-1.28
03-Jul-02	6	-1.67	0.04
03-Jul-02	7	0.66	-1.05

Settlement Periods where the market was short (and the SBP was the main Energy Imbalance Price)

Date	Period	Market Length
03-Jul-02	16	S
03-Jul-02	29	S
05-Jul-02	22	S
05-Jul-02	23	S
05-Jul-02	24	S
05-Jul-02	25	S
05-Jul-02	26	S
05-Jul-02	38	S
05-Jul-02	39	S
05-Jul-02	47	S
07-Jul-02	41	S
07-Jul-02	42	S
07-Jul-02	43	S
07-Jul-02	44	S
08-Jul-02	16	S
08-Jul-02	17	S
08-Jul-02	18	S
08-Jul-02	19	S
08-Jul-02	20	S
08-Jul-02	21	S
08-Jul-02	22	S
08-Jul-02	23	S
08-Jul-02	24	S
08-Jul-02	25	S
08-Jul-02	26	S
08-Jul-02	27	S
08-Jul-02	28	S
08-Jul-02	38	S
08-Jul-02	39	S
08-Jul-02	40	S
08-Jul-02	41	S
08-Jul-02	43	S
08-Jul-02	44	S
09-Jul-02	14	S
09-Jul-02	15	S
09-Jul-02	16	S
09-Jul-02	17	S
09-Jul-02	18	S
09-Jul-02	19	S
09-Jul-02	20	S
09-Jul-02	22	S
09-Jul-02	23	S
09-Jul-02	24	S
09-Jul-02	25	S
09-Jul-02	26	S
09-Jul-02	27	S
09-Jul-02	28	S
09-Jul-02	29	S
09-Jul-02	30	S
09-Jul-02	37	S
09-Jul-02	39	S
11-Jul-02	23	S

03-Jul-02	8	0.85	-1.58
03-Jul-02	9	-0.79	0.25
03-Jul-02	10	-2.66	1.35
03-Jul-02	11	-0.98	-0.26
03-Jul-02	12	0.59	-0.35
03-Jul-02	13	4.79	-1.41
03-Jul-02	14	2.92	-2.38
03-Jul-02	15	8.15	1.95
03-Jul-02	16	7.48	3.45
03-Jul-02	17	24.47	20.29
03-Jul-02	18	0.00	22.72
03-Jul-02	19	3.97	1.68
03-Jul-02	20	3.11	1.07
03-Jul-02	21	0.00	31.56
03-Jul-02	22	0.00	32.44
03-Jul-02	23	0.00	33.58
03-Jul-02	24	0.00	33.57
03-Jul-02	25	0.00	34.09
03-Jul-02	26	0.00	33.98
03-Jul-02	27	0.00	34.06
03-Jul-02	28	6.21	5.34
03-Jul-02	29	6.58	0.45
03-Jul-02	30	7.19	4.33
03-Jul-02	31	0.00	31.50
03-Jul-02	32	9.35	8.34
03-Jul-02	33	8.16	7.25
03-Jul-02	34	0.00	34.58
03-Jul-02	35	8.39	7.85
03-Jul-02	36	0.00	34.24
03-Jul-02	37	5.56	4.36
03-Jul-02	38	4.44	3.48
03-Jul-02	39	6.08	-1.80
03-Jul-02	40	7.71	0.58
03-Jul-02	41	12.73	4.29
03-Jul-02	42	4.83	4.64
03-Jul-02	43	5.41	5.02
03-Jul-02	44	5.25	4.96
03-Jul-02	45	5.22	4.90
03-Jul-02	46	2.62	1.96
03-Jul-02	47	22.58	22.71
03-Jul-02	48	13.03	5.21
04-Jul-02	1	3.26	3.46
04-Jul-02	2	1.38	-1.12
04-Jul-02	3	-3.60	-0.15
04-Jul-02	4	-1.23	0.90
04-Jul-02	5	-0.71	1.61
04-Jul-02	6	-2.23	2.55
04-Jul-02	7	-2.40	2.52
04-Jul-02	8	-2.34	2.70
04-Jul-02	9	-2.34	2.46
04-Jul-02	10	0.50	3.14
04-Jul-02	11	2.80	3.79
04-Jul-02	12	2.87	3.78
04-Jul-02	13	-2.08	2.07
04-Jul-02	14	4.55	5.03
04-Jul-02	15	7.65	7.47

11-Jul-02	24	S
12-Jul-02	17	S
12-Jul-02	18	S
14-Jul-02	6	S
14-Jul-02	7	S
14-Jul-02	8	S
14-Jul-02	9	S
14-Jul-02	10	S
14-Jul-02	11	S
14-Jul-02	12	S
14-Jul-02	13	S
14-Jul-02	14	S
14-Jul-02	16	S
14-Jul-02	17	S
14-Jul-02	45	S
14-Jul-02	46	S
14-Jul-02	47	S

04-Jul-02	16	2.79	-0.19
04-Jul-02	17	7.60	5.80
04-Jul-02	18	0.00	34.21
04-Jul-02	19	0.00	34.34
04-Jul-02	20	0.00	0.01
04-Jul-02	21	0.00	0.01
04-Jul-02	22	7.36	7.35
04-Jul-02	23	8.64	8.64
04-Jul-02	24	0.00	0.01
04-Jul-02	25	0.00	0.27
04-Jul-02	26	0.00	0.91
04-Jul-02	27	6.87	7.59
04-Jul-02	28	10.99	12.41
04-Jul-02	29	0.00	1.57
04-Jul-02	30	0.00	1.38
04-Jul-02	31	11.44	12.39
04-Jul-02	32	11.23	12.26
04-Jul-02	33	8.28	9.24
04-Jul-02	34	6.92	8.93
04-Jul-02	35	9.83	11.38
04-Jul-02	36	7.58	8.94
04-Jul-02	37	6.94	8.62
04-Jul-02	38	2.82	4.53
04-Jul-02	39	3.35	4.44
04-Jul-02	40	25.59	24.88
04-Jul-02	41	8.65	6.96
04-Jul-02	42	22.73	22.70
04-Jul-02	43	6.19	5.71
04-Jul-02	44	4.93	4.75
04-Jul-02	45	11.91	11.92
04-Jul-02	46	8.54	8.55
04-Jul-02	47	6.20	6.22
04-Jul-02	48	11.00	11.00
05-Jul-02	1	1.34	1.34
05-Jul-02	2	1.27	1.64
05-Jul-02	3	3.19	3.50
05-Jul-02	4	2.05	2.26
05-Jul-02	5	2.19	2.36
05-Jul-02	6	4.13	4.29
05-Jul-02	7	5.36	5.56
05-Jul-02	8	5.27	5.63
05-Jul-02	9	5.61	5.76
05-Jul-02	10	7.56	7.76
05-Jul-02	11	7.36	7.56
05-Jul-02	12	6.27	6.47
05-Jul-02	13	8.16	8.19
05-Jul-02	14	4.02	2.80
05-Jul-02	15	-0.31	-0.77
05-Jul-02	16	6.52	2.62
05-Jul-02	17	12.06	9.85
05-Jul-02	18	0.00	34.75
05-Jul-02	19	5.06	3.04
05-Jul-02	20	0.00	33.99
05-Jul-02	21	75.79	34.05
05-Jul-02	22	9.24	8.16
05-Jul-02	23	19.31	8.63



05-Jul-02	24	32.51	14.24
05-Jul-02	25	35.16	13.47
05-Jul-02	26	36.84	7.19
05-Jul-02	27	28.89	4.96
05-Jul-02	28	23.56	2.60
05-Jul-02	29	8.74	2.51
05-Jul-02	30	8.22	2.73
05-Jul-02	31	3.86	1.06
05-Jul-02	32	5.24	2.06
05-Jul-02	33	4.52	1.27
05-Jul-02	34	4.16	1.05
05-Jul-02	35	5.09	1.27
05-Jul-02	36	5.05	1.43
05-Jul-02	37	-0.10	-2.23
05-Jul-02	38	0.36	-2.07
05-Jul-02	39	6.97	6.97
05-Jul-02	40	7.70	7.63
05-Jul-02	41	14.52	14.48
05-Jul-02	42	98.63	97.36
05-Jul-02	43	0.29	0.29
05-Jul-02	44	12.36	12.36
05-Jul-02	45	11.47	3.23
05-Jul-02	46	6.54	0.41
05-Jul-02	47	18.33	14.81
05-Jul-02	48	28.72	30.09
06-Jul-02	1	4.01	6.29
06-Jul-02	2	15.76	9.83
06-Jul-02	3	0.00	5.41
06-Jul-02	4	12.33	4.03
06-Jul-02	5	12.37	3.40
06-Jul-02	6	11.45	3.68
06-Jul-02	7	9.85	3.93
06-Jul-02	8	9.14	5.60
06-Jul-02	9	10.22	5.97
06-Jul-02	10	9.99	5.27
06-Jul-02	11	8.72	4.46
06-Jul-02	12	15.39	8.12
06-Jul-02	13	16.43	5.72
06-Jul-02	14	0.00	6.86
06-Jul-02	15	4.49	5.97
06-Jul-02	16	3.97	4.27
06-Jul-02	17	5.73	-0.69
06-Jul-02	18	5.46	-0.68
06-Jul-02	19	4.23	-0.50
06-Jul-02	20	0.67	-0.29
06-Jul-02	21	0.28	0.29
06-Jul-02	22	9.75	0.33
06-Jul-02	23	3.99	0.03
06-Jul-02	24	8.16	0.46
06-Jul-02	25	2.02	2.02
06-Jul-02	26	1.35	1.36
06-Jul-02	27	2.62	2.63
06-Jul-02	28	14.70	14.71
06-Jul-02	29	12.95	12.95
06-Jul-02	30	0.00	0.07
06-Jul-02	31	0.00	0.00

06-Jul-02	32	0.00	0.00
06-Jul-02	33	7.28	7.28
06-Jul-02	34	0.00	0.01
06-Jul-02	35	7.61	7.62
06-Jul-02	36	0.00	0.00
06-Jul-02	37	0.00	0.00
06-Jul-02	38	0.00	0.00
06-Jul-02	39	2.00	1.37
06-Jul-02	40	2.43	1.29
06-Jul-02	41	5.89	4.80
06-Jul-02	42	6.45	5.57
06-Jul-02	43	5.44	4.31
06-Jul-02	44	6.69	4.29
06-Jul-02	45	6.07	5.63
06-Jul-02	46	2.93	2.66
06-Jul-02	47	37.94	38.06
06-Jul-02	48	37.43	41.19
07-Jul-02	1	40.75	41.17
07-Jul-02	2	6.26	5.32
07-Jul-02	3	8.75	2.63
07-Jul-02	4	11.87	2.63
07-Jul-02	5	10.05	4.63
07-Jul-02	6	11.42	6.04
07-Jul-02	7	12.87	-0.84
07-Jul-02	8	12.28	-0.50
07-Jul-02	9	11.03	-0.23
07-Jul-02	10	11.36	-0.17
07-Jul-02	11	13.08	8.15
07-Jul-02	12	12.39	8.43
07-Jul-02	13	11.88	9.16
07-Jul-02	14	9.30	10.45
07-Jul-02	15	2.25	9.59
07-Jul-02	16	0.65	8.92
07-Jul-02	17	1.91	7.34
07-Jul-02	18	0.59	8.15
07-Jul-02	19	-0.09	2.63
07-Jul-02	20	8.57	0.58
07-Jul-02	21	11.74	8.87
07-Jul-02	22	11.82	9.92
07-Jul-02	23	9.65	8.71
07-Jul-02	24	4.98	3.88
07-Jul-02	25	6.26	4.62
07-Jul-02	26	6.91	6.00
07-Jul-02	27	1.18	-0.58
07-Jul-02	28	2.72	-0.96
07-Jul-02	29	6.79	-1.40
07-Jul-02	30	2.81	2.81
07-Jul-02	31	7.41	7.41
07-Jul-02	32	0.00	0.00
07-Jul-02	33	16.89	16.89
07-Jul-02	34	17.20	17.20
07-Jul-02	35	3.97	3.97
07-Jul-02	36	4.70	4.70
07-Jul-02	37	0.00	19.63
07-Jul-02	38	0.00	0.00
07-Jul-02	39	4.39	3.32

07-Jul-02	40	3.47	1.43
07-Jul-02	41	9.28	6.77
07-Jul-02	42	7.89	4.24
07-Jul-02	43	5.39	2.20
07-Jul-02	44	5.77	4.36
07-Jul-02	45	2.54	1.44
07-Jul-02	46	3.53	1.49
07-Jul-02	47	12.32	12.32
07-Jul-02	48	14.13	14.96
08-Jul-02	1	11.78	13.72
08-Jul-02	2	8.93	11.98
08-Jul-02	3	6.40	8.73
08-Jul-02	4	7.89	8.26
08-Jul-02	5	12.18	8.15
08-Jul-02	6	15.58	8.23
08-Jul-02	7	14.34	8.05
08-Jul-02	8	17.34	8.40
08-Jul-02	9	21.94	8.46
08-Jul-02	10	19.66	8.48
08-Jul-02	11	23.75	7.66
08-Jul-02	12	21.22	7.94
08-Jul-02	13	3.55	5.09
08-Jul-02	14	3.43	3.55
08-Jul-02	15	9.72	7.76
08-Jul-02	16	10.53	6.40
08-Jul-02	17	39.01	13.21
08-Jul-02	18	7.79	7.33
08-Jul-02	19	11.05	16.38
08-Jul-02	20	11.41	15.31
08-Jul-02	21	12.67	13.66
08-Jul-02	22	11.13	13.20
08-Jul-02	23	9.77	13.12
08-Jul-02	24	12.18	13.10
08-Jul-02	25	13.31	14.15
08-Jul-02	26	14.53	14.09
08-Jul-02	27	17.78	16.01
08-Jul-02	28	16.53	8.14
08-Jul-02	29	6.90	6.74
08-Jul-02	30	14.10	6.52
08-Jul-02	31	16.51	16.52
08-Jul-02	32	7.72	7.76
08-Jul-02	33	5.88	4.83
08-Jul-02	34	23.75	23.75
08-Jul-02	35	28.96	24.88
08-Jul-02	36	12.20	10.66
08-Jul-02	37	8.70	8.26
08-Jul-02	38	8.14	6.47
08-Jul-02	39	9.22	7.85
08-Jul-02	40	7.02	6.23
08-Jul-02	41	9.95	9.05
08-Jul-02	42	8.52	4.68
08-Jul-02	43	10.12	9.49
08-Jul-02	44	14.55	11.31
08-Jul-02	45	0.00	0.01
08-Jul-02	46	15.58	15.59
08-Jul-02	47	15.90	15.91

08-Jul-02	48	24.94	24.97
09-Jul-02	1	7.75	7.75
09-Jul-02	2	4.75	4.62
09-Jul-02	3	7.17	7.17
09-Jul-02	4	13.91	13.91
09-Jul-02	5	7.79	8.33
09-Jul-02	6	10.86	8.49
09-Jul-02	7	8.46	7.00
09-Jul-02	8	4.92	6.47
09-Jul-02	9	3.75	6.72
09-Jul-02	10	9.55	8.68
09-Jul-02	11	9.68	8.50
09-Jul-02	12	9.55	8.50
09-Jul-02	13	10.27	8.50
09-Jul-02	14	20.88	15.23
09-Jul-02	15	9.72	-72.51
09-Jul-02	16	9.78	11.68
09-Jul-02	17	53.72	19.84
09-Jul-02	18	23.28	17.50
09-Jul-02	19	22.72	17.80
09-Jul-02	20	6.35	9.04
09-Jul-02	21	6.58	6.42
09-Jul-02	22	8.29	13.55
09-Jul-02	23	5.68	10.82
09-Jul-02	24	14.09	16.89
09-Jul-02	25	179.26	34.27
09-Jul-02	26	163.03	32.08
09-Jul-02	27	43.21	18.75
09-Jul-02	28	7.20	8.94
09-Jul-02	29	5.85	6.91
09-Jul-02	30	7.72	13.26
09-Jul-02	31	7.80	5.94
09-Jul-02	32	8.39	5.95
09-Jul-02	33	7.86	5.97
09-Jul-02	34	10.22	7.73
09-Jul-02	35	0.00	289.77
09-Jul-02	36	8.22	5.88
09-Jul-02	37	6.92	2.69
09-Jul-02	38	2.85	2.85
09-Jul-02	39	9.33	8.48
09-Jul-02	40	16.29	16.29
09-Jul-02	41	19.96	13.74
09-Jul-02	42	0.00	0.00
09-Jul-02	43	0.00	107.96
09-Jul-02	44	27.01	27.01
09-Jul-02	45	9.12	7.70
09-Jul-02	46	8.12	8.11
09-Jul-02	47	9.42	9.43
09-Jul-02	48	9.98	9.98
10-Jul-02	1	11.85	11.84
10-Jul-02	2	25.07	25.06
10-Jul-02	3	13.03	13.03
10-Jul-02	4	10.16	10.16
10-Jul-02	5	6.43	6.43
10-Jul-02	6	7.20	7.15
10-Jul-02	7	10.16	10.15

10-Jul-02	8	9.80	9.80
10-Jul-02	9	10.93	10.93
10-Jul-02	10	12.53	13.42
10-Jul-02	11	5.57	6.22
10-Jul-02	12	4.22	4.14
10-Jul-02	13	3.04	2.99
10-Jul-02	14	9.97	9.97
10-Jul-02	15	9.71	9.61
10-Jul-02	16	9.80	9.81
10-Jul-02	17	9.32	9.11
10-Jul-02	18	14.31	14.32
10-Jul-02	19	10.11	10.11
10-Jul-02	20	9.21	9.58
10-Jul-02	21	9.49	10.14
10-Jul-02	22	12.49	15.03
10-Jul-02	23	20.08	23.25
10-Jul-02	24	20.52	23.69
10-Jul-02	25	24.17	24.17
10-Jul-02	26	19.94	19.94
10-Jul-02	27	18.31	15.80
10-Jul-02	28	0.00	0.00
10-Jul-02	29	0.00	0.00
10-Jul-02	30	0.00	0.00
10-Jul-02	31	0.00	0.00
10-Jul-02	32	0.00	0.29
10-Jul-02	33	0.00	0.08
10-Jul-02	34	0.00	0.08
10-Jul-02	35	0.00	0.01
10-Jul-02	36	0.00	0.01
10-Jul-02	37	0.00	12.14
10-Jul-02	38	13.52	13.65
10-Jul-02	39	1.69	-8.52
10-Jul-02	40	10.90	10.76
10-Jul-02	41	0.00	115.69
10-Jul-02	42	0.00	0.00
10-Jul-02	43	0.09	0.09
10-Jul-02	44	8.59	8.56
10-Jul-02	45	9.28	9.25
10-Jul-02	46	12.49	12.49
10-Jul-02	47	37.72	37.72
10-Jul-02	48	27.13	27.13
11-Jul-02	1	9.71	9.71
11-Jul-02	2	9.19	9.19
11-Jul-02	3	8.38	8.38
11-Jul-02	4	7.77	7.77
11-Jul-02	5	6.40	6.40
11-Jul-02	6	6.53	6.53
11-Jul-02	7	9.78	9.78
11-Jul-02	8	9.67	9.67
11-Jul-02	9	9.67	9.67
11-Jul-02	10	9.71	9.70
11-Jul-02	11	8.48	8.48
11-Jul-02	12	8.20	8.20
11-Jul-02	13	7.91	7.91
11-Jul-02	14	6.82	6.82
11-Jul-02	15	8.71	8.00

11-Jul-02	16	6.51	6.50
11-Jul-02	17	17.30	17.08
11-Jul-02	18	0.03	30.02
11-Jul-02	19	15.03	12.25
11-Jul-02	20	10.30	9.31
11-Jul-02	21	0.00	27.09
11-Jul-02	22	10.03	24.30
11-Jul-02	23	8.50	6.24
11-Jul-02	24	9.47	16.49
11-Jul-02	25	0.00	29.24
11-Jul-02	26	0.00	28.95
11-Jul-02	27	14.28	12.46
11-Jul-02	28	0.00	0.00
11-Jul-02	29	0.00	0.00
11-Jul-02	30	0.00	0.00
11-Jul-02	31	10.53	10.53
11-Jul-02	32	10.77	10.76
11-Jul-02	33	8.76	8.77
11-Jul-02	34	7.54	7.63
11-Jul-02	35	0.00	0.04
11-Jul-02	36	16.82	14.33
11-Jul-02	37	7.72	7.80
11-Jul-02	38	19.53	19.53
11-Jul-02	39	7.67	7.45
11-Jul-02	40	16.59	16.61
11-Jul-02	41	18.85	69.42
11-Jul-02	42	0.00	0.00
11-Jul-02	43	0.20	0.20
11-Jul-02	44	0.24	0.24
11-Jul-02	45	0.00	10.56
11-Jul-02	46	15.97	15.69
11-Jul-02	47	8.46	8.32
11-Jul-02	48	11.62	11.28
12-Jul-02	1	13.65	13.64
12-Jul-02	2	7.11	7.10
12-Jul-02	3	9.51	9.50
12-Jul-02	4	10.15	10.15
12-Jul-02	5	9.72	9.72
12-Jul-02	6	9.66	9.66
12-Jul-02	7	9.67	9.68
12-Jul-02	8	10.05	10.05
12-Jul-02	9	10.28	10.28
12-Jul-02	10	11.06	11.06
12-Jul-02	11	11.96	11.96
12-Jul-02	12	11.20	11.20
12-Jul-02	13	9.41	9.43
12-Jul-02	14	6.89	7.11
12-Jul-02	15	6.81	4.40
12-Jul-02	16	9.20	6.82
12-Jul-02	17	18.28	9.11
12-Jul-02	18	17.43	5.75
12-Jul-02	19	10.63	10.64
12-Jul-02	20	26.71	26.71
12-Jul-02	21	27.34	27.35
12-Jul-02	22	27.50	27.50
12-Jul-02	23	28.15	28.16

12-Jul-02	24	29.00	29.00
12-Jul-02	25	28.96	28.97
12-Jul-02	26	11.13	11.14
12-Jul-02	27	15.97	15.98
12-Jul-02	28	16.67	16.68
12-Jul-02	29	0.00	0.01
12-Jul-02	30	0.00	0.01
12-Jul-02	31	0.28	0.28
12-Jul-02	32	0.00	0.00
12-Jul-02	33	0.00	0.00
12-Jul-02	34	10.20	10.20
12-Jul-02	35	10.05	10.05
12-Jul-02	36	13.01	13.01
12-Jul-02	37	0.00	0.00
12-Jul-02	38	0.00	2.35
12-Jul-02	39	11.82	11.83
12-Jul-02	40	6.58	6.17
12-Jul-02	41	14.46	14.36
12-Jul-02	42	11.13	9.88
12-Jul-02	43	9.76	9.74
12-Jul-02	44	9.28	9.22
12-Jul-02	45	25.04	24.99
12-Jul-02	46	3.57	3.56
12-Jul-02	47	5.48	5.48
12-Jul-02	48	21.85	22.04
13-Jul-02	1	11.02	12.40
13-Jul-02	2	4.27	5.40
13-Jul-02	3	12.20	13.43
13-Jul-02	4	15.07	16.05
13-Jul-02	5	5.60	6.60
13-Jul-02	6	5.12	6.13
13-Jul-02	7	4.77	6.27
13-Jul-02	8	4.95	6.32
13-Jul-02	9	5.45	6.56
13-Jul-02	10	6.04	7.17
13-Jul-02	11	5.93	6.97
13-Jul-02	12	6.08	7.07
13-Jul-02	13	1.91	5.93
13-Jul-02	14	3.82	5.57
13-Jul-02	15	13.04	6.22
13-Jul-02	16	0.00	0.25
13-Jul-02	17	3.80	3.78
13-Jul-02	18	0.00	0.01
13-Jul-02	19	0.00	0.01
13-Jul-02	20	0.00	0.01
13-Jul-02	21	0.00	0.01
13-Jul-02	22	0.00	0.01
13-Jul-02	23	0.00	0.01
13-Jul-02	24	0.00	0.01
13-Jul-02	25	0.00	0.01
13-Jul-02	26	0.00	0.01
13-Jul-02	27	10.45	10.42
13-Jul-02	28	0.00	0.01
13-Jul-02	29	17.41	17.42
13-Jul-02	30	0.00	0.01
13-Jul-02	31	0.36	0.36

13-Jul-02	32	0.49	0.49
13-Jul-02	33	0.41	0.41
13-Jul-02	34	0.43	0.43
13-Jul-02	35	0.34	0.34
13-Jul-02	36	0.29	0.29
13-Jul-02	37	0.49	0.49
13-Jul-02	38	0.23	0.23
13-Jul-02	39	10.90	10.90
13-Jul-02	40	11.01	11.01
13-Jul-02	41	14.54	14.55
13-Jul-02	42	14.77	14.77
13-Jul-02	43	13.86	13.86
13-Jul-02	44	6.69	6.66
13-Jul-02	45	6.85	6.83
13-Jul-02	46	10.73	10.97
13-Jul-02	47	5.42	5.63
13-Jul-02	48	7.98	8.79
14-Jul-02	1	9.98	9.97
14-Jul-02	2	9.75	9.65
14-Jul-02	3	10.58	10.56
14-Jul-02	4	9.51	9.48
14-Jul-02	5	6.66	6.66
14-Jul-02	6	8.70	8.70
14-Jul-02	7	9.71	9.70
14-Jul-02	8	9.32	9.32
14-Jul-02	9	10.44	10.45
14-Jul-02	10	8.50	-4.13
14-Jul-02	11	6.73	-1.73
14-Jul-02	12	4.90	4.90
14-Jul-02	13	8.86	10.28
14-Jul-02	14	5.20	-1.70
14-Jul-02	15	0.39	-1.64
14-Jul-02	16	1.44	-0.24
14-Jul-02	17	2.29	1.02
14-Jul-02	18	1.36	0.66
14-Jul-02	19	2.15	2.16
14-Jul-02	20	1.58	1.07
14-Jul-02	21	6.50	4.83
14-Jul-02	22	2.98	2.96
14-Jul-02	23	3.33	0.19
14-Jul-02	24	8.74	8.91
14-Jul-02	25	25.67	25.67
14-Jul-02	26	26.54	26.55
14-Jul-02	27	0.83	0.84
14-Jul-02	28	0.00	0.25
14-Jul-02	29	3.48	3.49
14-Jul-02	30	0.00	0.01
14-Jul-02	31	0.00	0.01
14-Jul-02	32	6.40	6.41
14-Jul-02	33	6.41	6.42
14-Jul-02	34	0.00	0.10
14-Jul-02	35	8.87	6.93
14-Jul-02	36	4.91	1.80
14-Jul-02	37	0.00	0.01
14-Jul-02	38	28.40	28.41
14-Jul-02	39	18.91	18.91







Settlement Periods where the market length  
 changed from that reported under the current  
 mechanism, as a consequence of BSAD

Date	Period	New Length	Original Length
3-Jul-02	1	L	S
3-Jul-02	2	L	S
3-Jul-02	3	L	S
3-Jul-02	4	L	S
3-Jul-02	5	L	S
3-Jul-02	6	L	S
3-Jul-02	7	L	S
3-Jul-02	8	L	S
3-Jul-02	9	L	S
3-Jul-02	10	L	S
3-Jul-02	11	L	S
3-Jul-02	12	L	S
3-Jul-02	13	L	S
3-Jul-02	14	L	S
3-Jul-02	15	L	S
3-Jul-02	30	L	S
4-Jul-02	3	L	S
4-Jul-02	7	L	S
4-Jul-02	8	L	S
4-Jul-02	9	L	S
4-Jul-02	13	L	S
4-Jul-02	16	L	S
5-Jul-02	16	L	S
5-Jul-02	27	L	S
5-Jul-02	28	L	S
5-Jul-02	29	L	S
5-Jul-02	30	L	S
6-Jul-02	2	L	S
6-Jul-02	3	L	S
6-Jul-02	4	L	S
6-Jul-02	5	L	S
6-Jul-02	6	L	S
6-Jul-02	7	L	S
6-Jul-02	8	L	S
6-Jul-02	9	L	S
6-Jul-02	10	L	S
6-Jul-02	11	L	S
6-Jul-02	12	L	S
6-Jul-02	13	L	S
6-Jul-02	14	L	S
6-Jul-02	15	L	S
6-Jul-02	16	L	S
6-Jul-02	17	L	S
6-Jul-02	18	L	S
6-Jul-02	19	L	S
6-Jul-02	20	L	S
6-Jul-02	24	L	S
6-Jul-02	48	L	S
7-Jul-02	2	L	S
7-Jul-02	3	L	S
7-Jul-02	4	L	S
7-Jul-02	5	L	S

7-Jul-02	6	L	S
7-Jul-02	7	L	S
7-Jul-02	8	L	S
7-Jul-02	9	L	S
7-Jul-02	10	L	S
7-Jul-02	11	L	S
7-Jul-02	12	L	S
7-Jul-02	13	L	S
7-Jul-02	14	L	S
7-Jul-02	16	L	S
7-Jul-02	17	L	S
7-Jul-02	18	L	S
7-Jul-02	19	L	S
7-Jul-02	20	L	S
7-Jul-02	21	L	S
7-Jul-02	22	L	S
7-Jul-02	27	L	S
7-Jul-02	28	L	S
7-Jul-02	29	L	S
8-Jul-02	29	L	S
8-Jul-02	30	L	S
8-Jul-02	33	L	S
8-Jul-02	35	L	S
8-Jul-02	36	L	S
8-Jul-02	42	L	S
9-Jul-02	6	L	S
9-Jul-02	7	L	S
9-Jul-02	8	L	S
9-Jul-02	9	L	S
9-Jul-02	10	L	S
9-Jul-02	11	L	S
9-Jul-02	12	L	S
9-Jul-02	13	L	S
9-Jul-02	38	L	S
11-Jul-02	23	S	L
11-Jul-02	24	S	L
12-Jul-02	15	L	S
12-Jul-02	16	L	S
14-Jul-02	15	L	S
14-Jul-02	18	L	S
14-Jul-02	20	L	S
14-Jul-02	21	L	S
14-Jul-02	23	L	S



















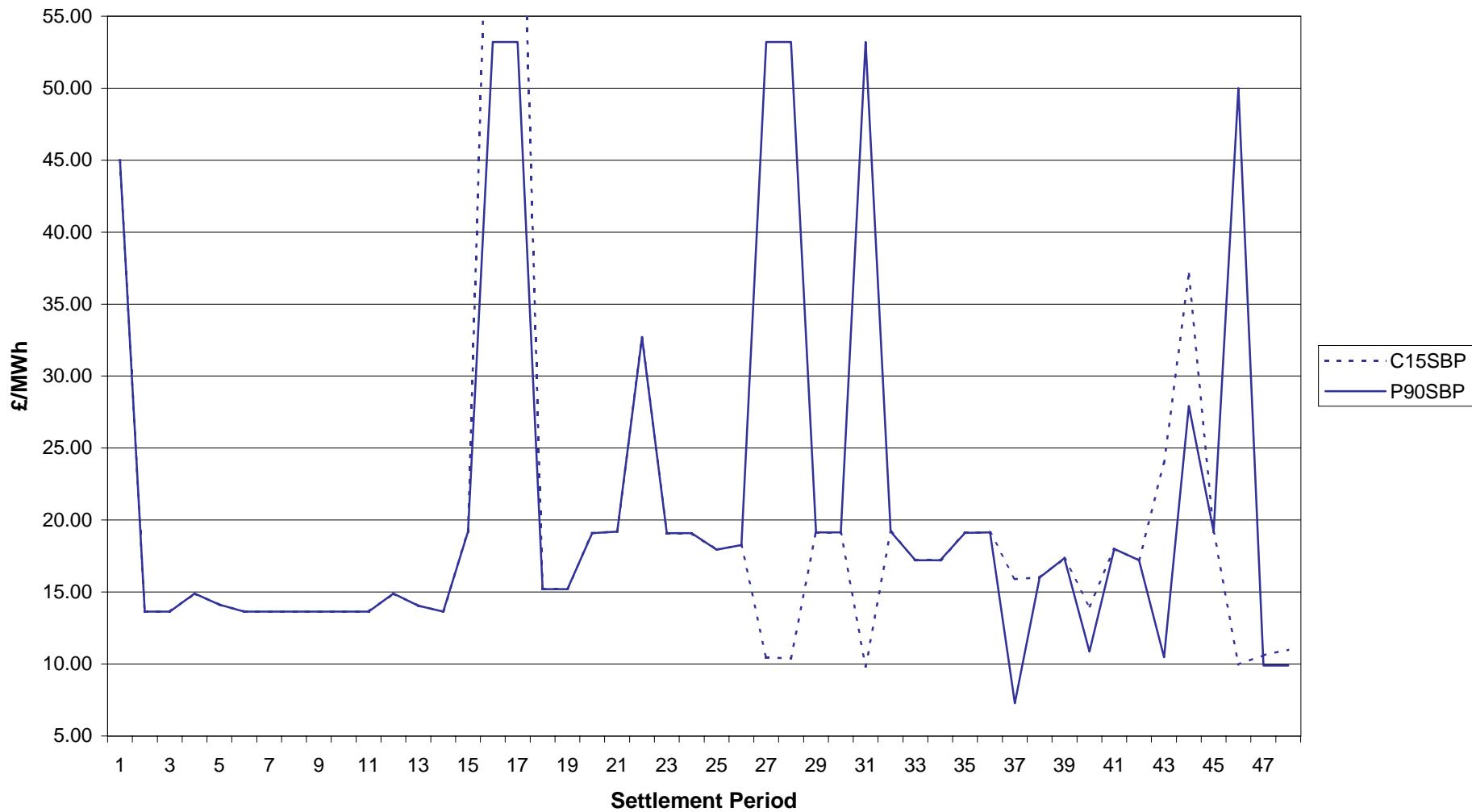






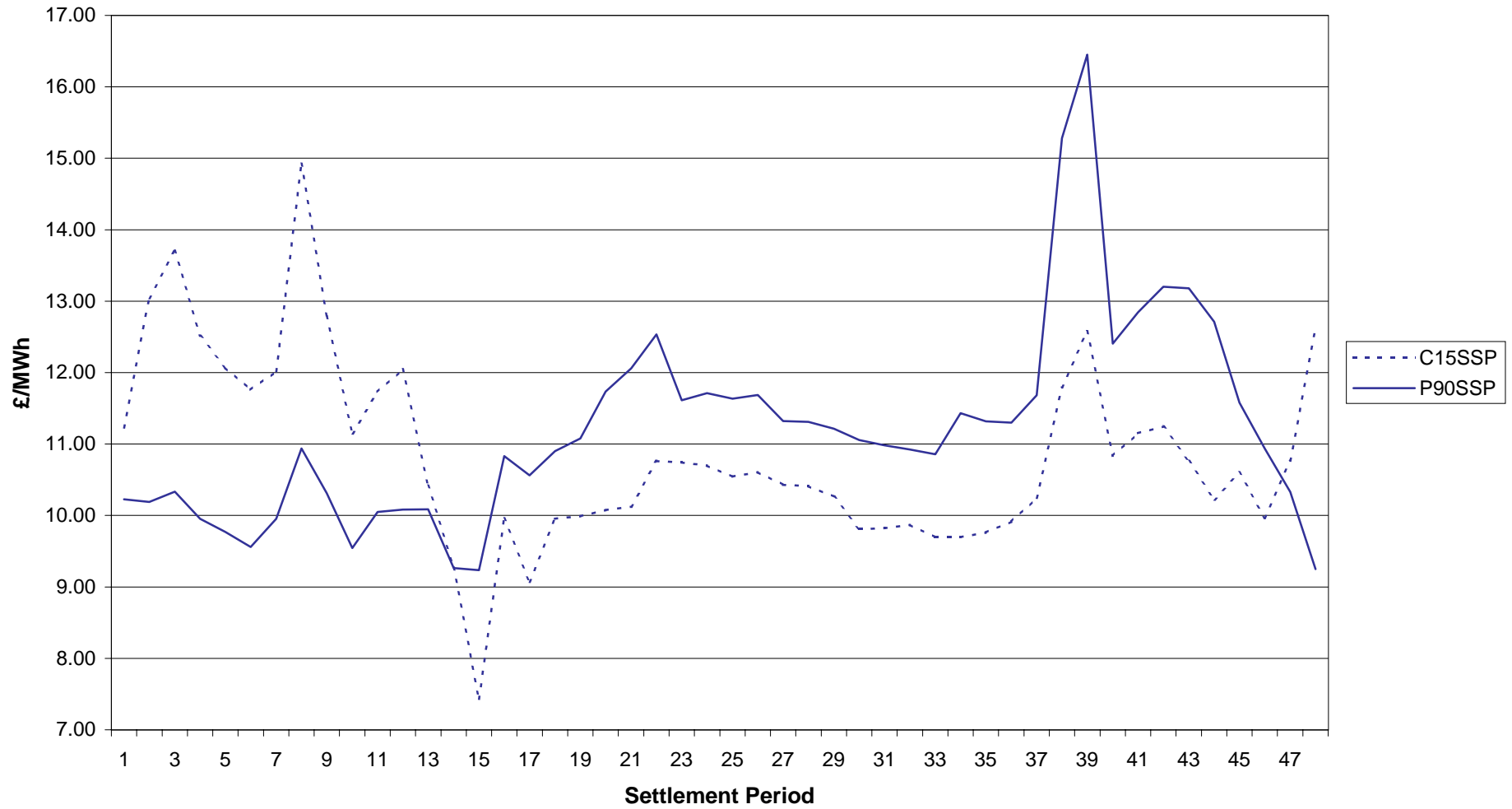
### 2 July 2002 - SBP Comparison

C15: SPs 16 and 17 @ £78.20

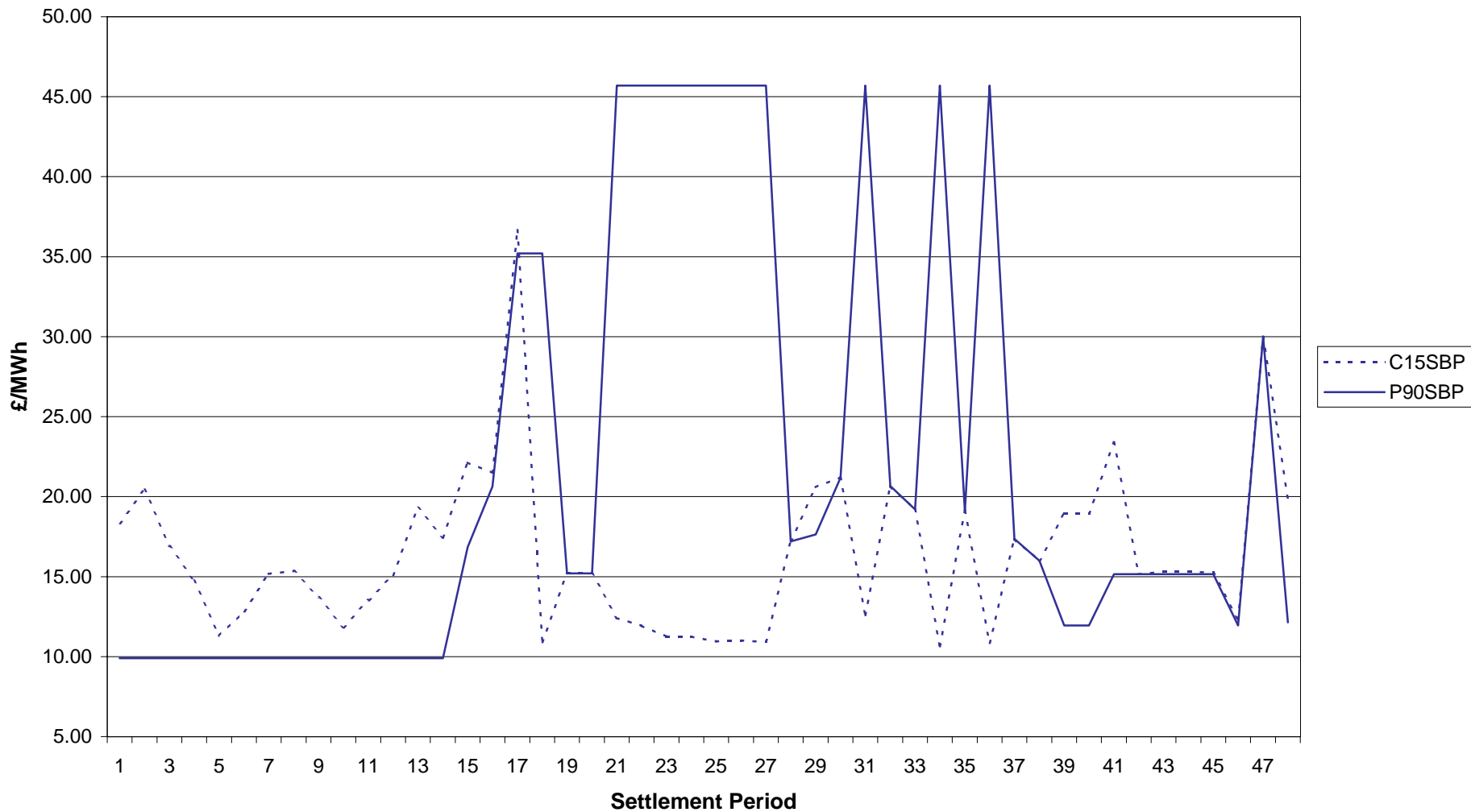




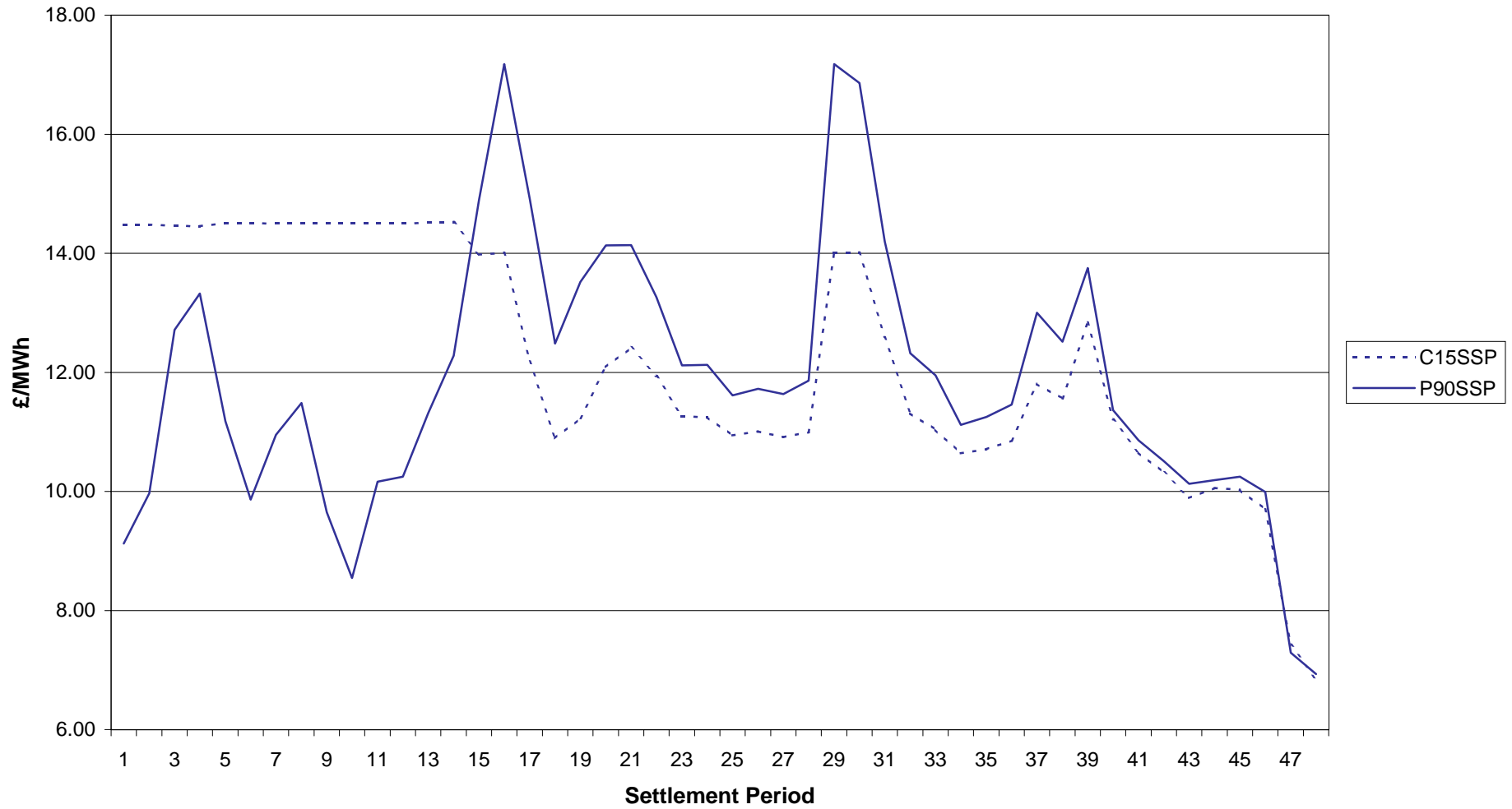
2 July 2002 - SSP Comparison



3 July 2002 - SBP Comparison

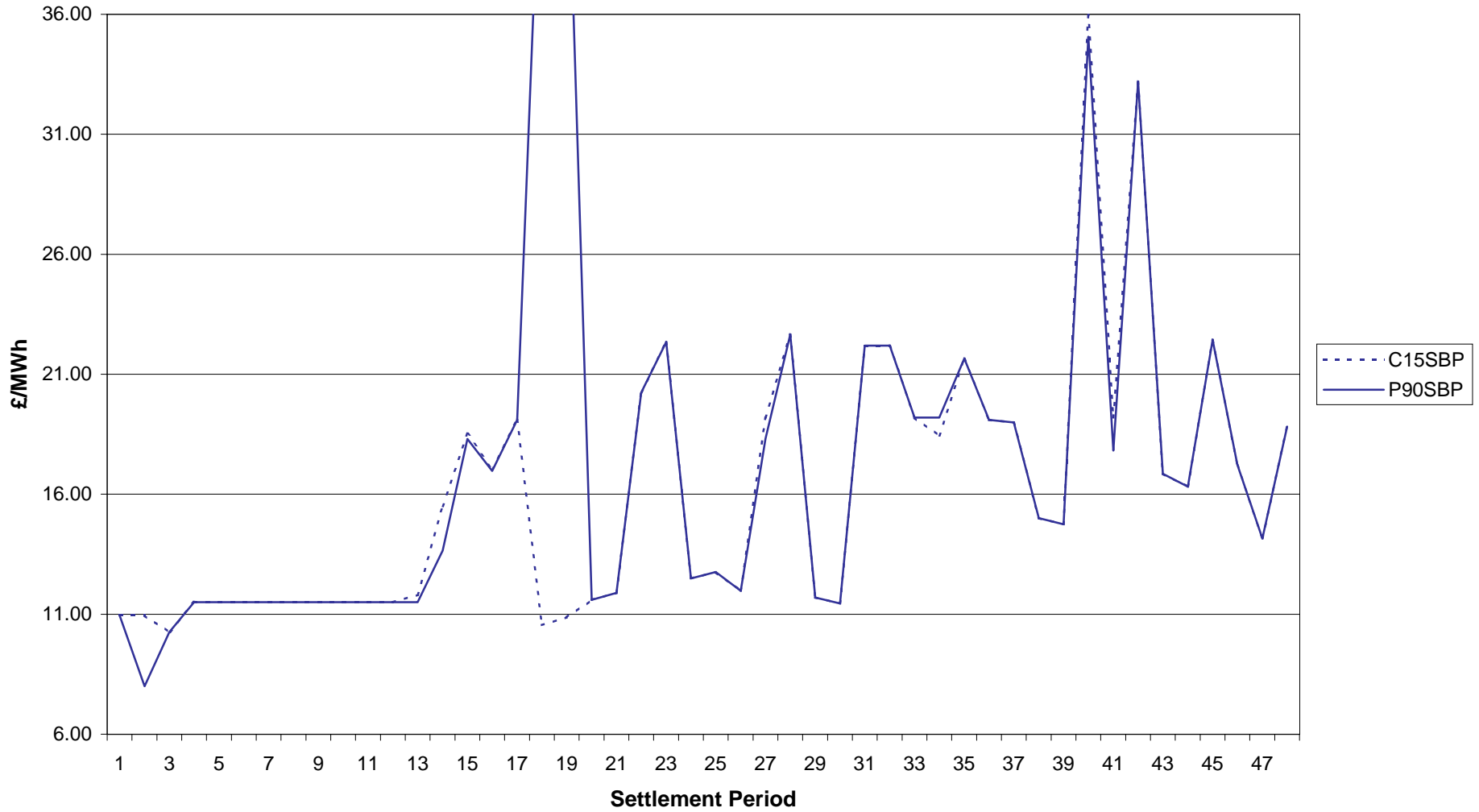


3 July 2002 - SSP Comparison



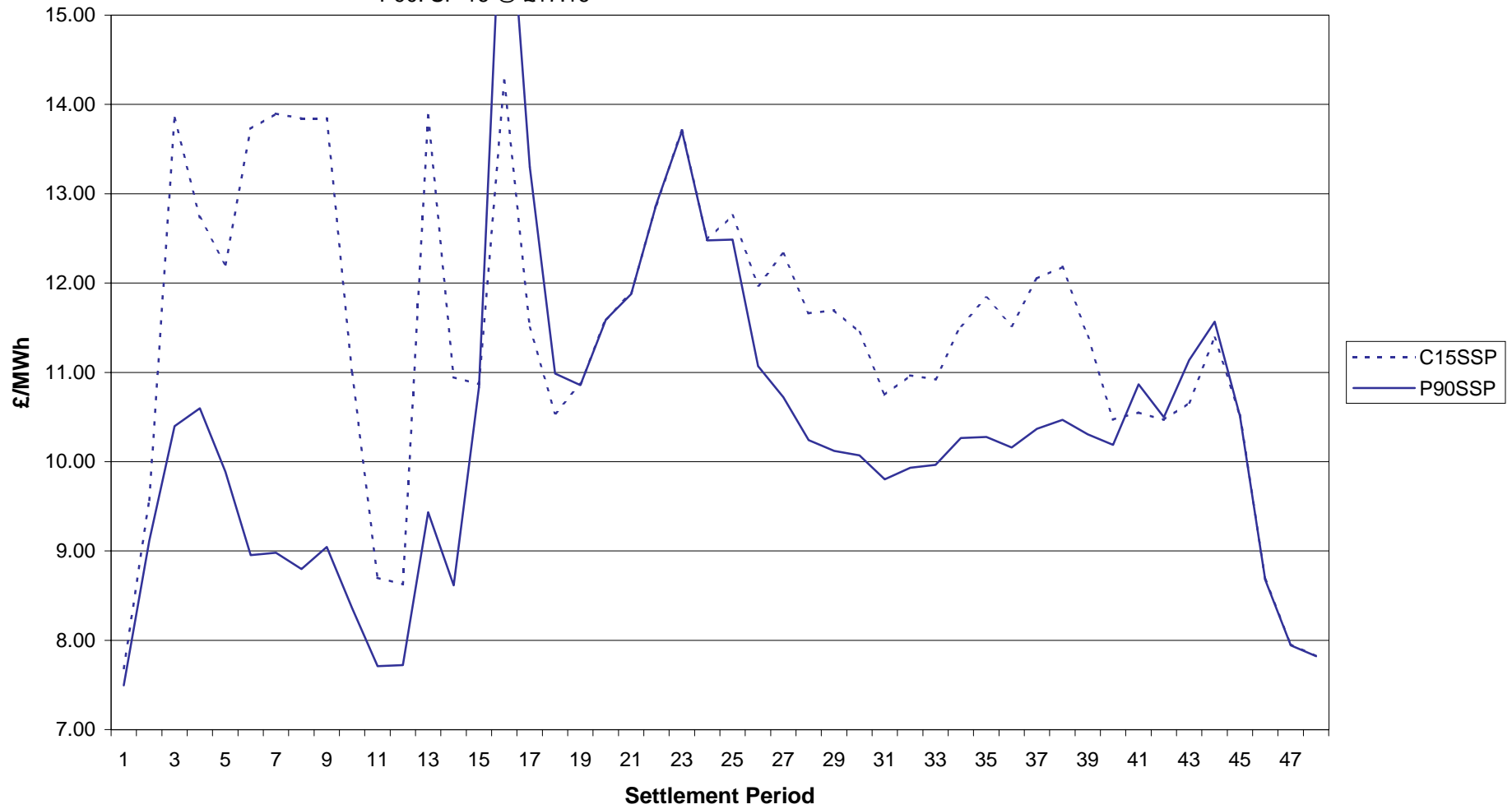
### 4 July 2002 - SBP Comparison

P90: SPs 18 and 19 @ £45.20



### 4 July 2002 - SSP Comparison

P90: SP 16 @ £17.16

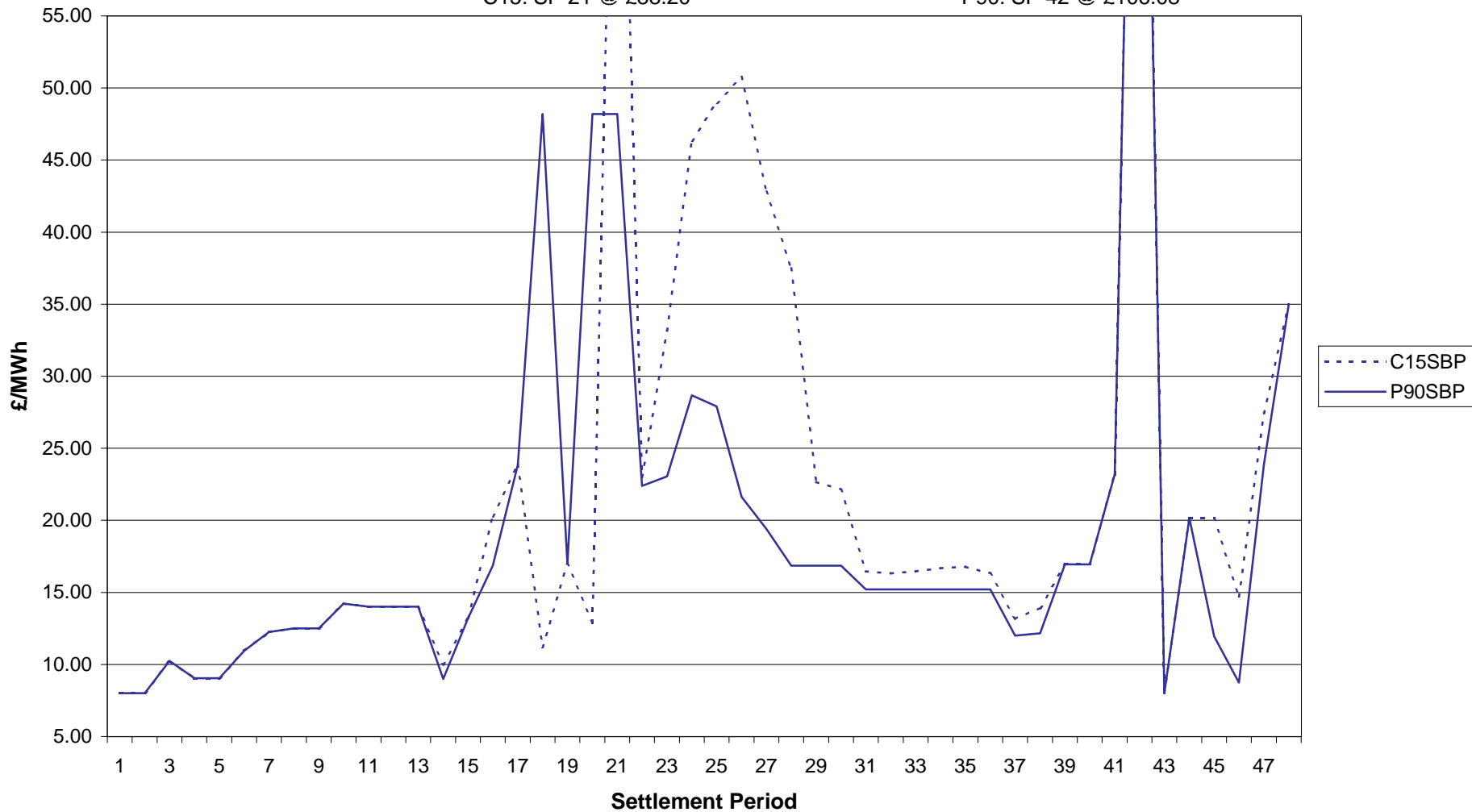


### 5 July 2002 - SBP Comparison

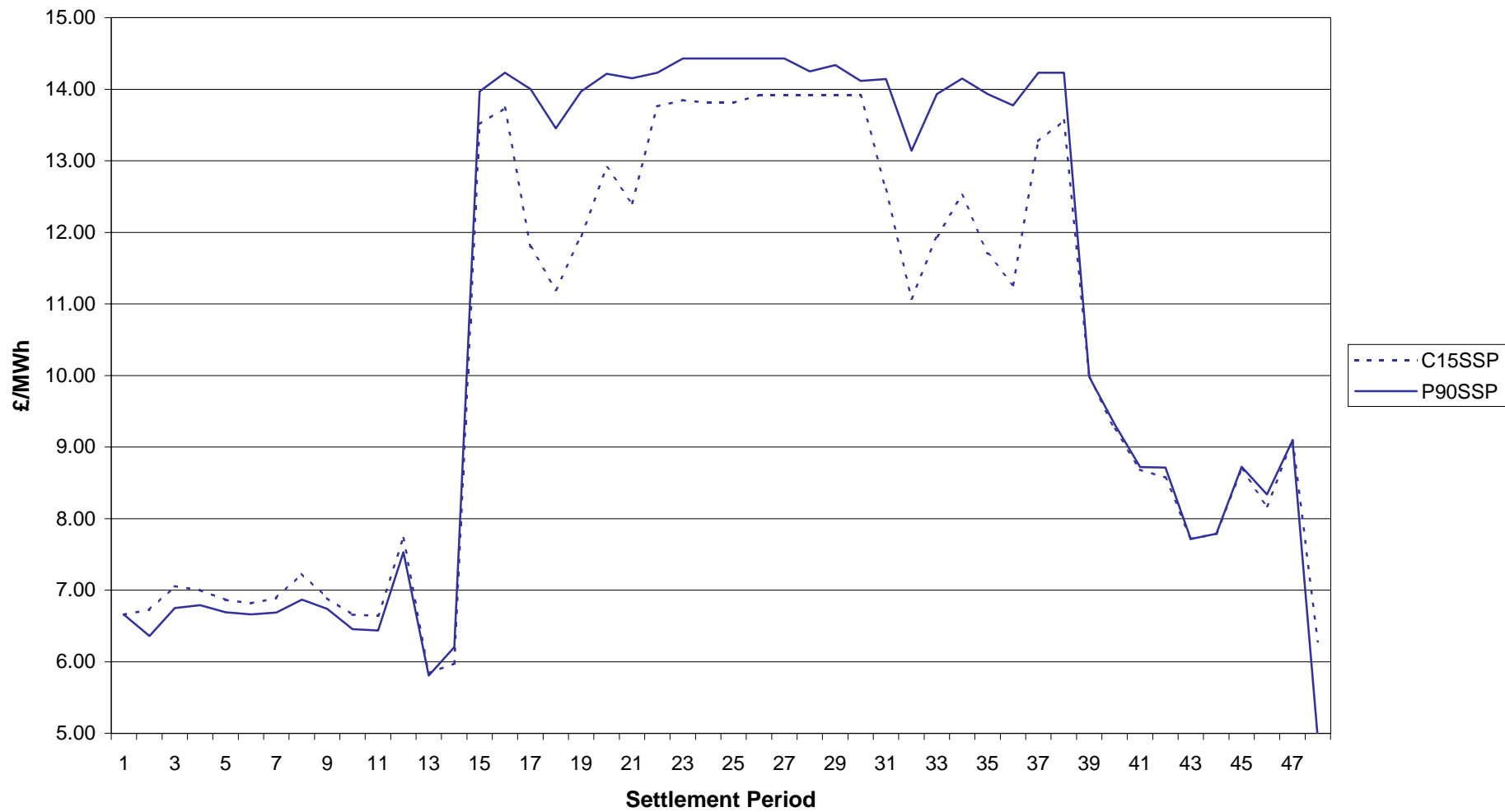
C15: SP 21 @ £88.20

C15: SP 42 @ £107.20

P90: SP 42 @ £106.08



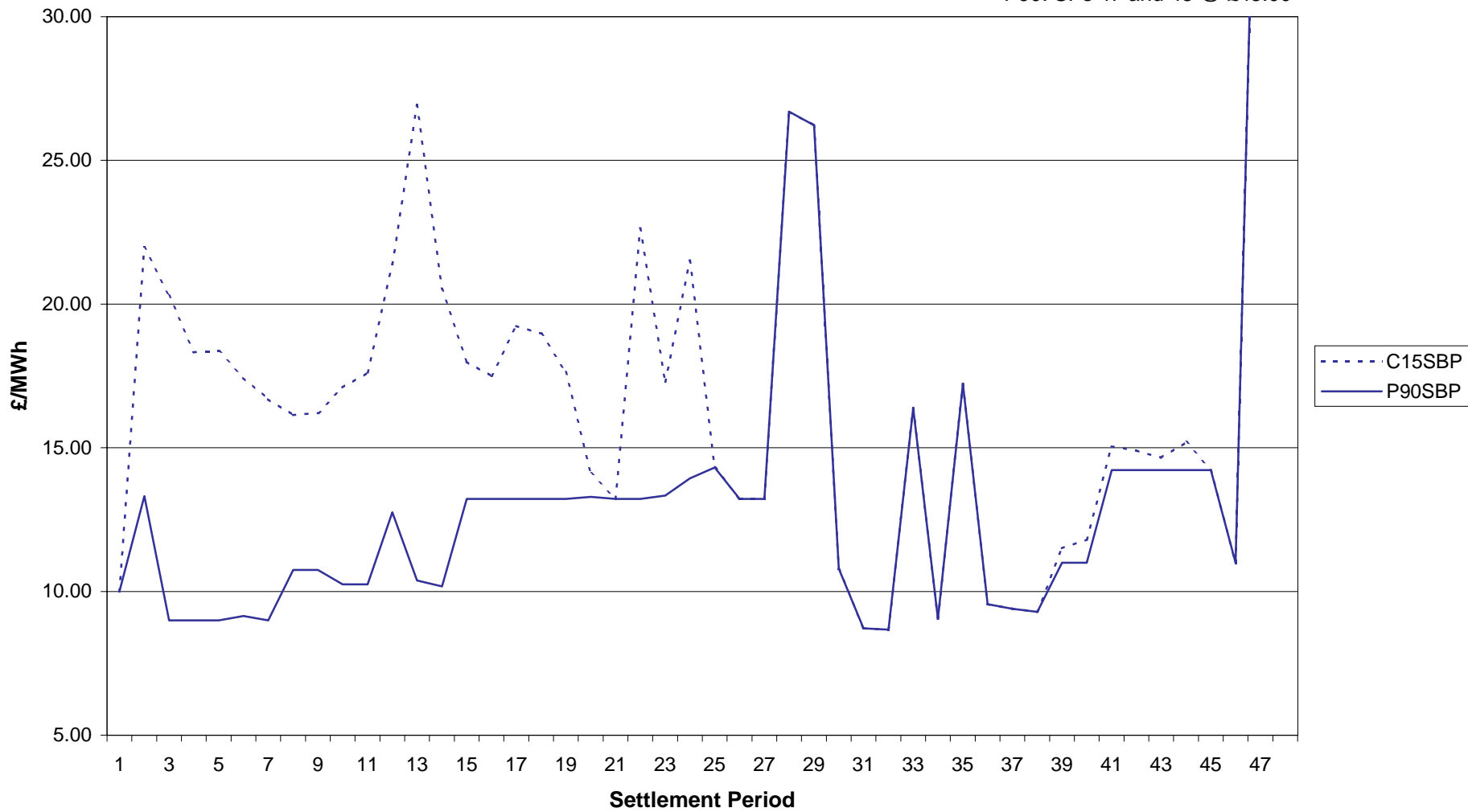
5 July 2002 - SSP Comparison



### 6 July 2002 - SBP Comparison

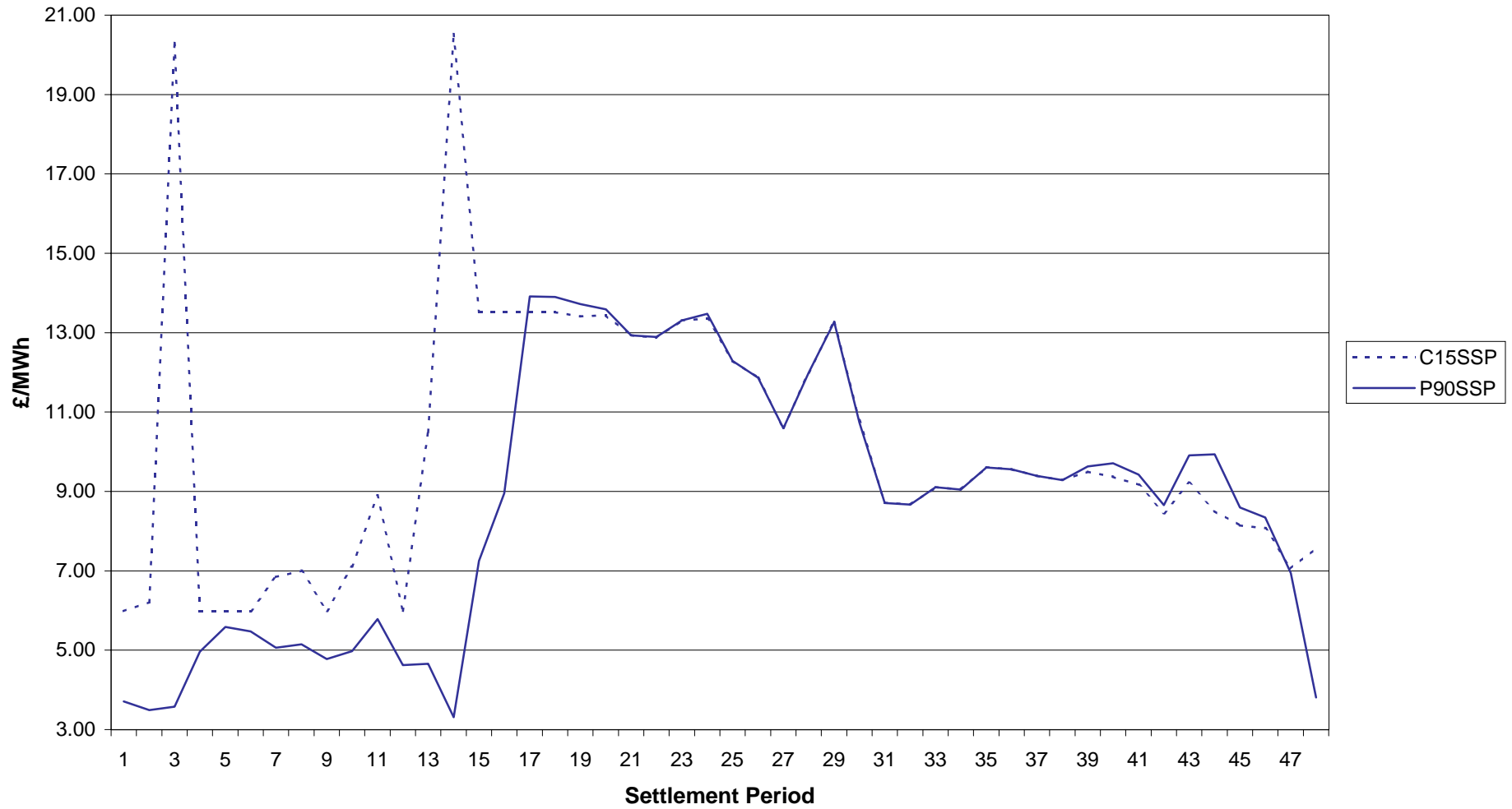
C15: SPs 47 and 48 @ £45.00

P90: SPs 47 and 48 @ £45.00





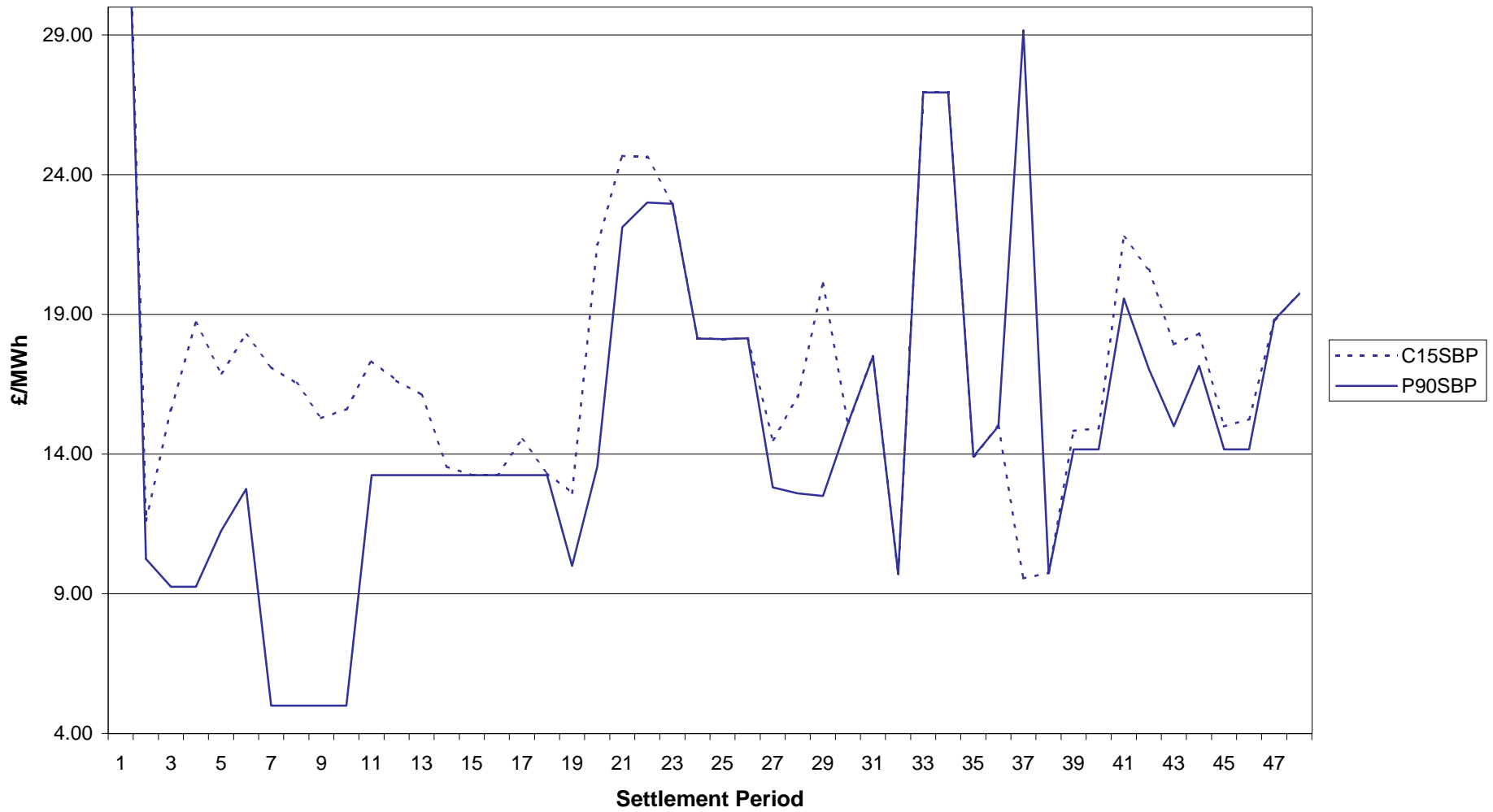
6 July 2002 - SSP Comparison



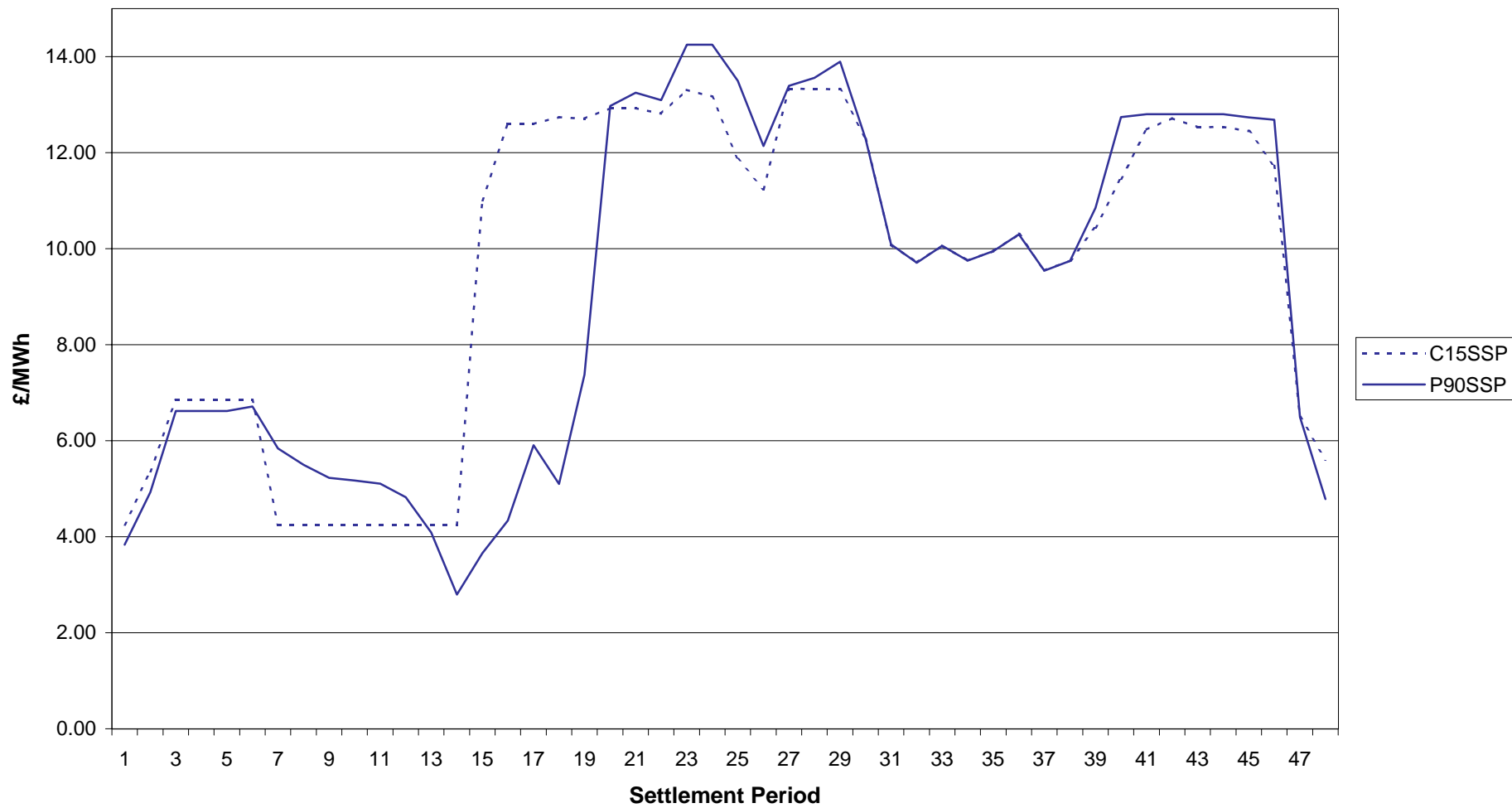
### 7 July 2002 - SBP Comparison

C15: SP 1 @ £45.00

P90: SP 1 @ £45.00

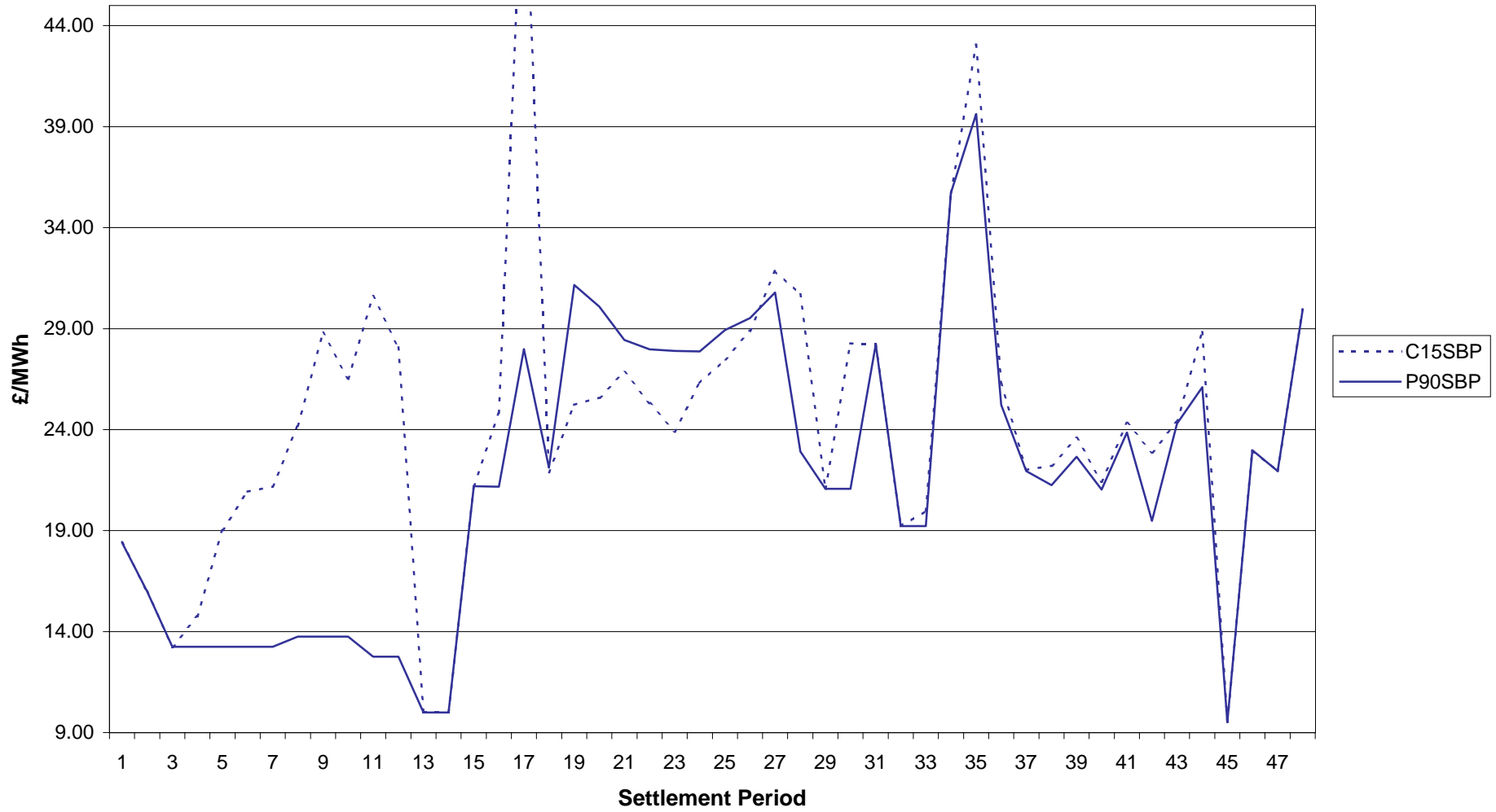


7 July 2002 - SSP Comparison

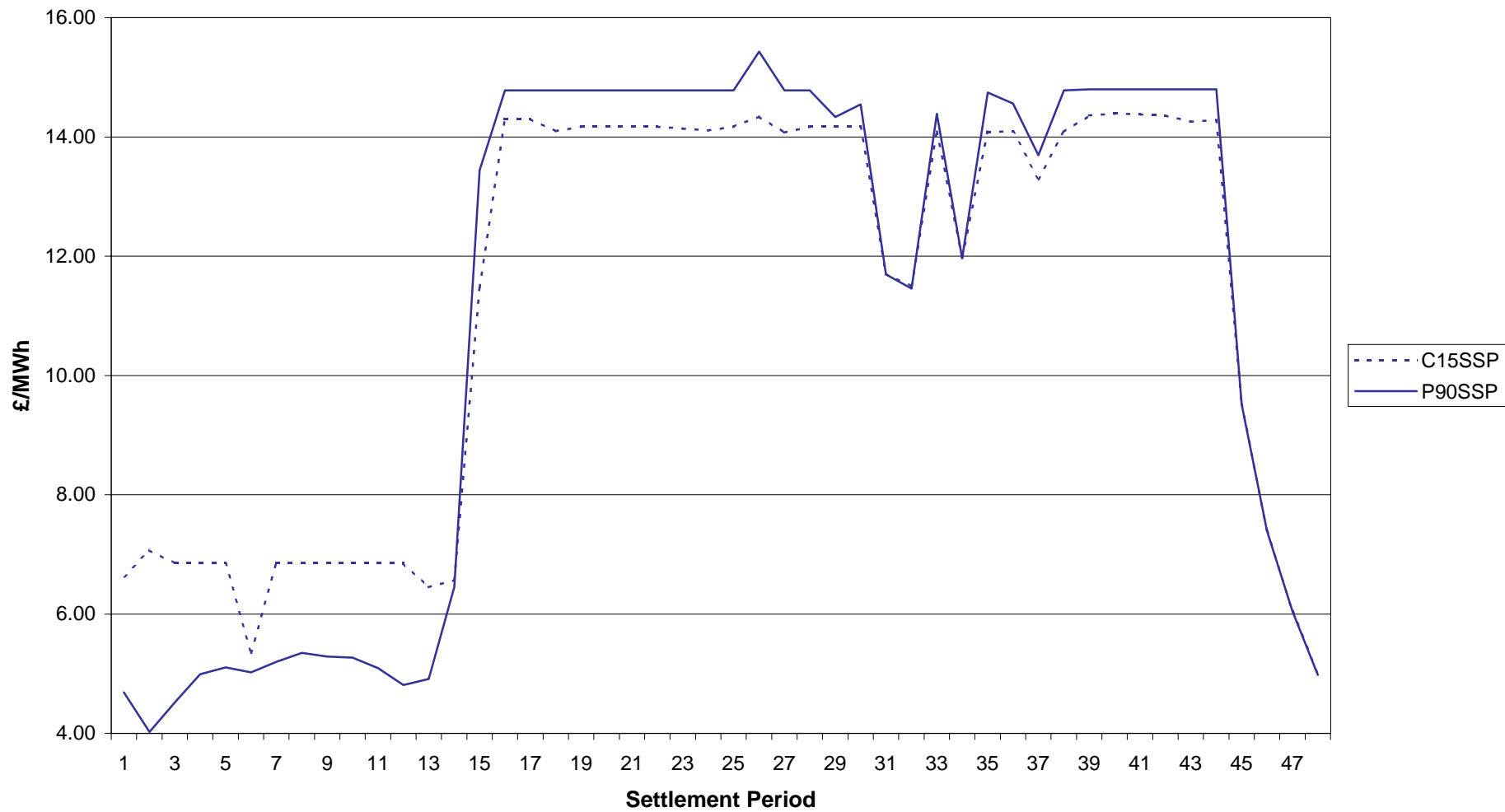


### 8 July 2002 - SBP Comparison

C15: Settlement Period 17 @ £53.31

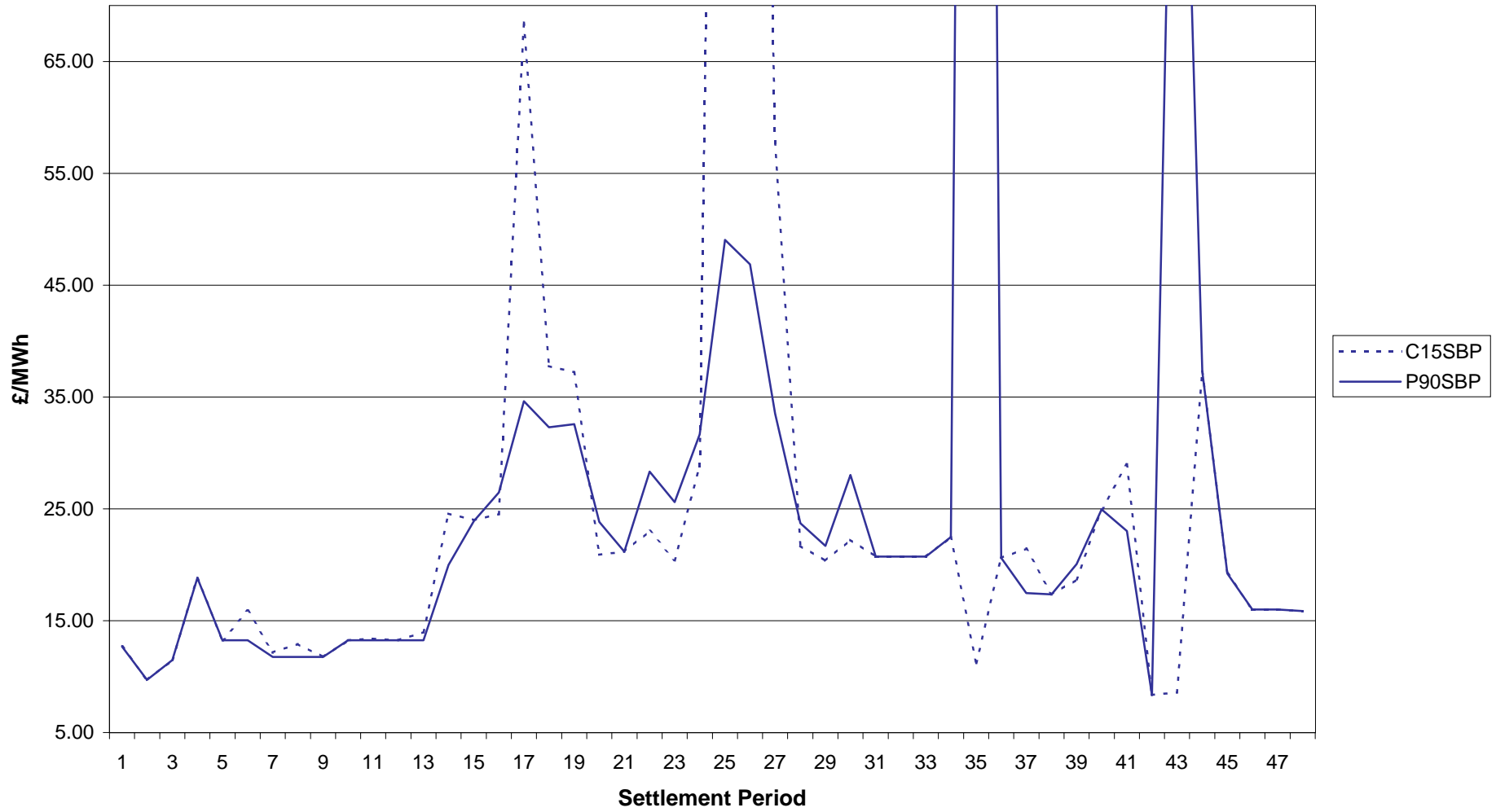


8 July 2002 - SSP Comparison



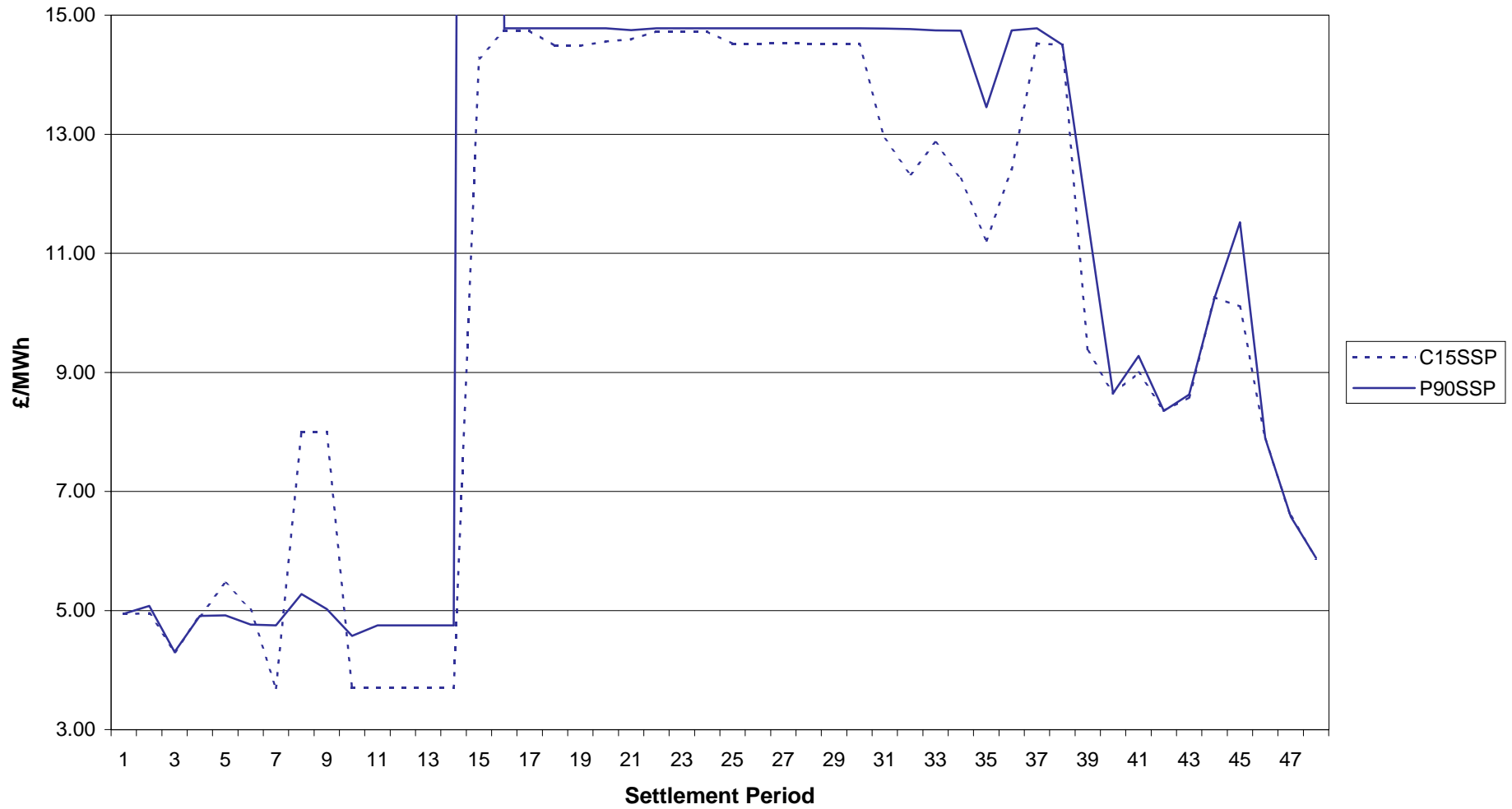
### 9 July 2002 - SBP Comparison

C15: SP 25 @ £193.78    P90: SP 35 @ £303.22    P90: SP 43 @ £116.58



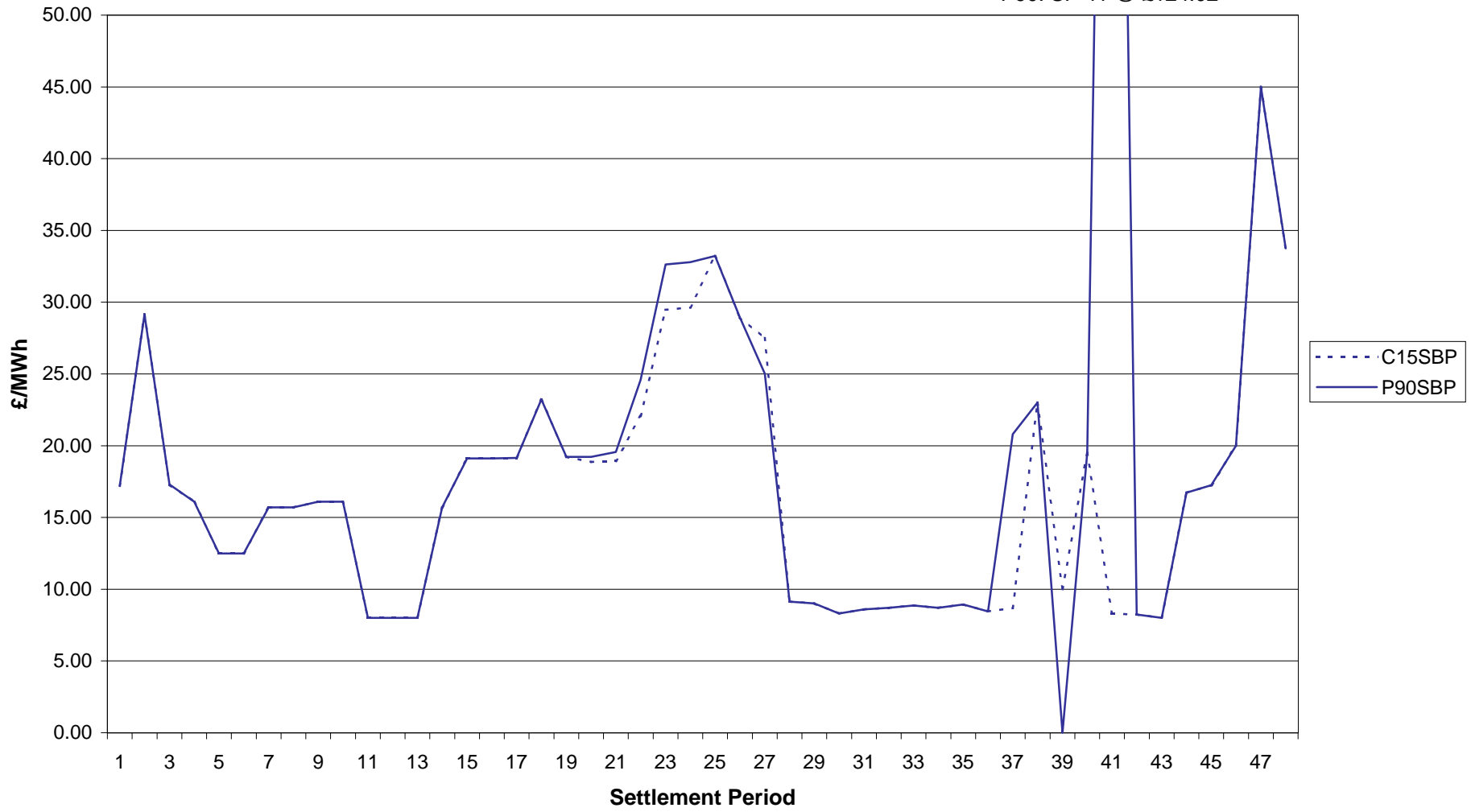
### 9 July 2002 - SSP Comparison

P90 @ SP 15 @ £96.41



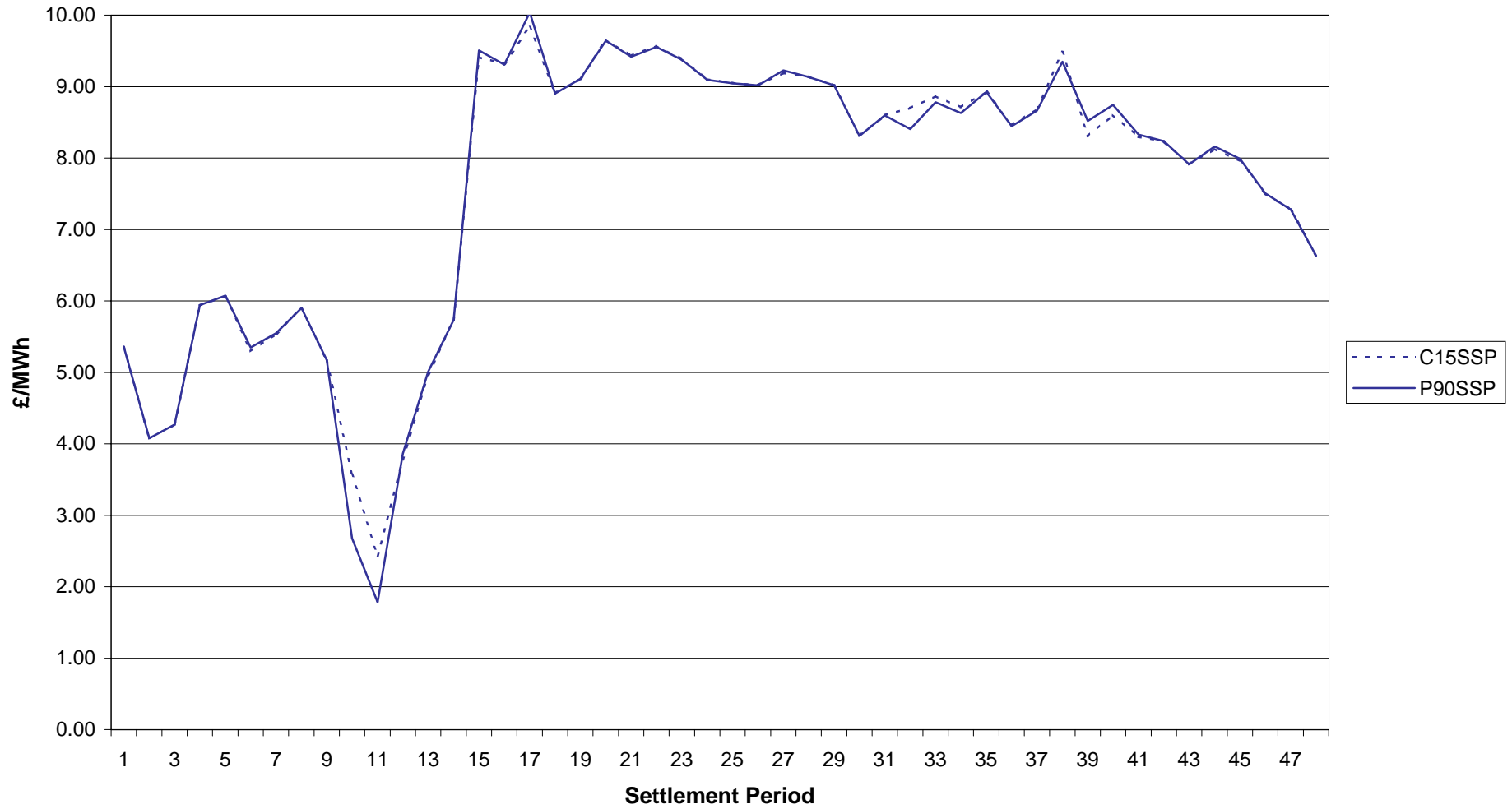
### 10 July 2002 - SBP Comparison

P90: SP 41 @ £124.02



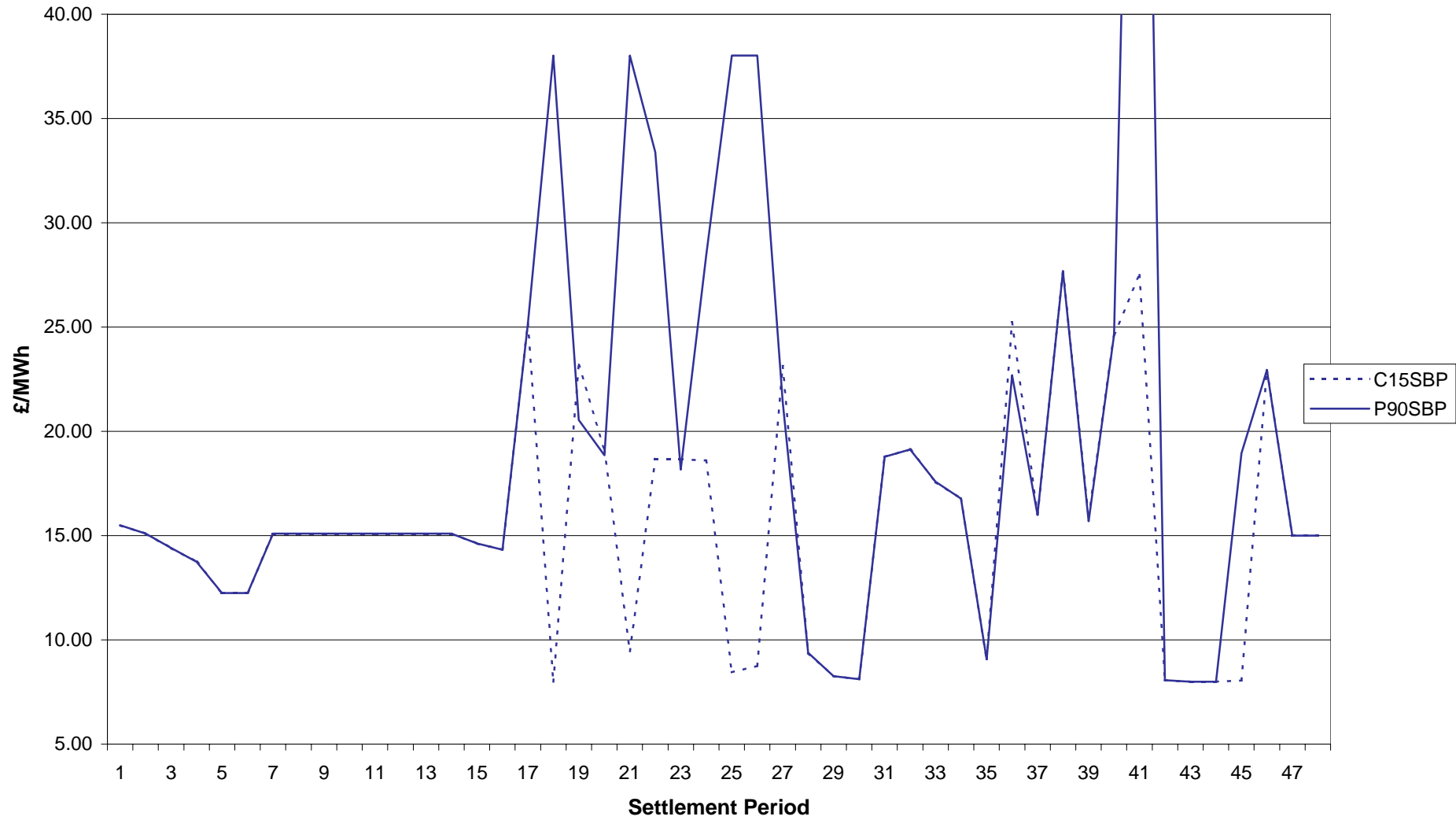


10 July 2002 - SSP Comparison

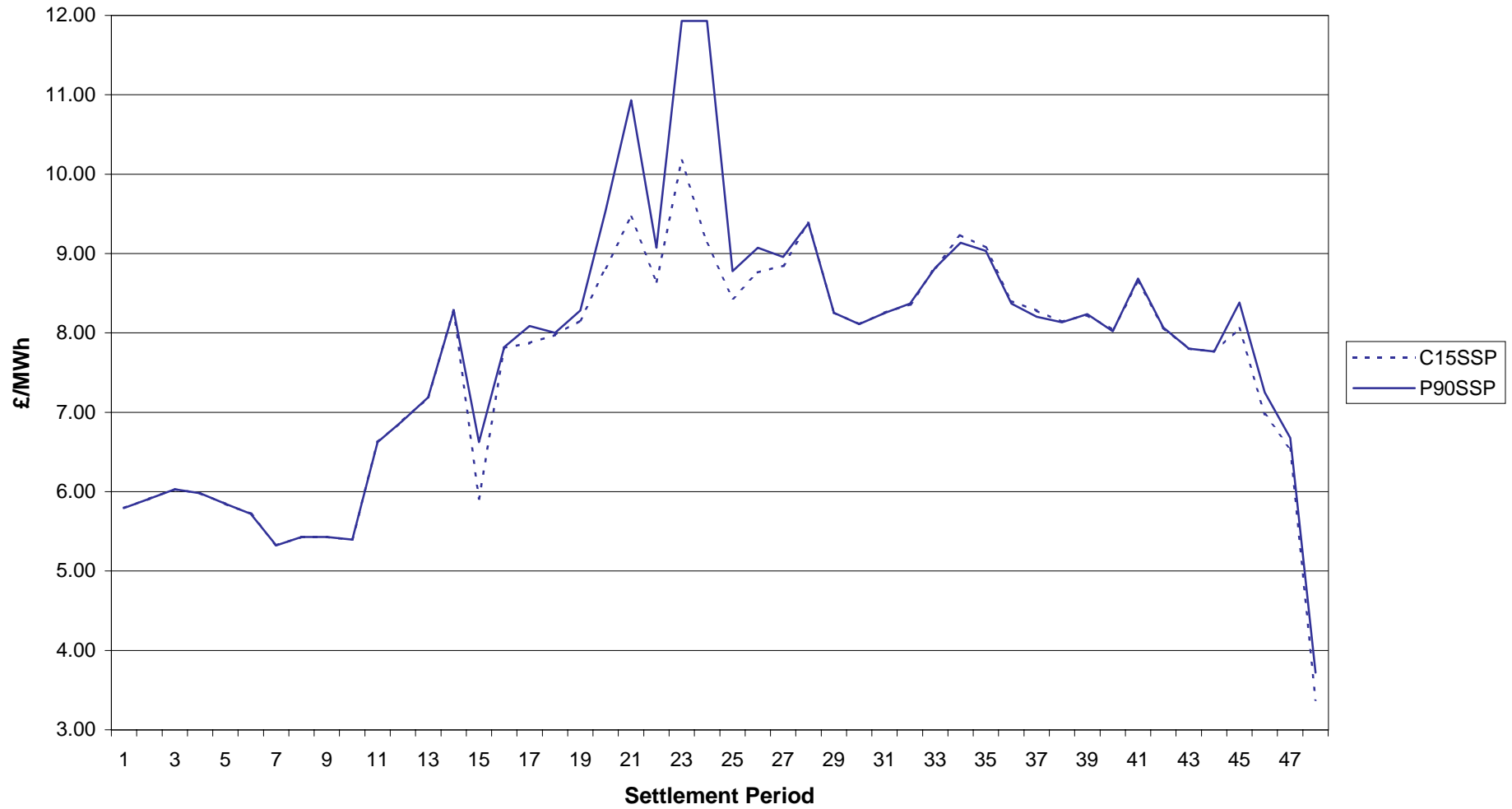


### 11 July 2002 - SBP Comparison

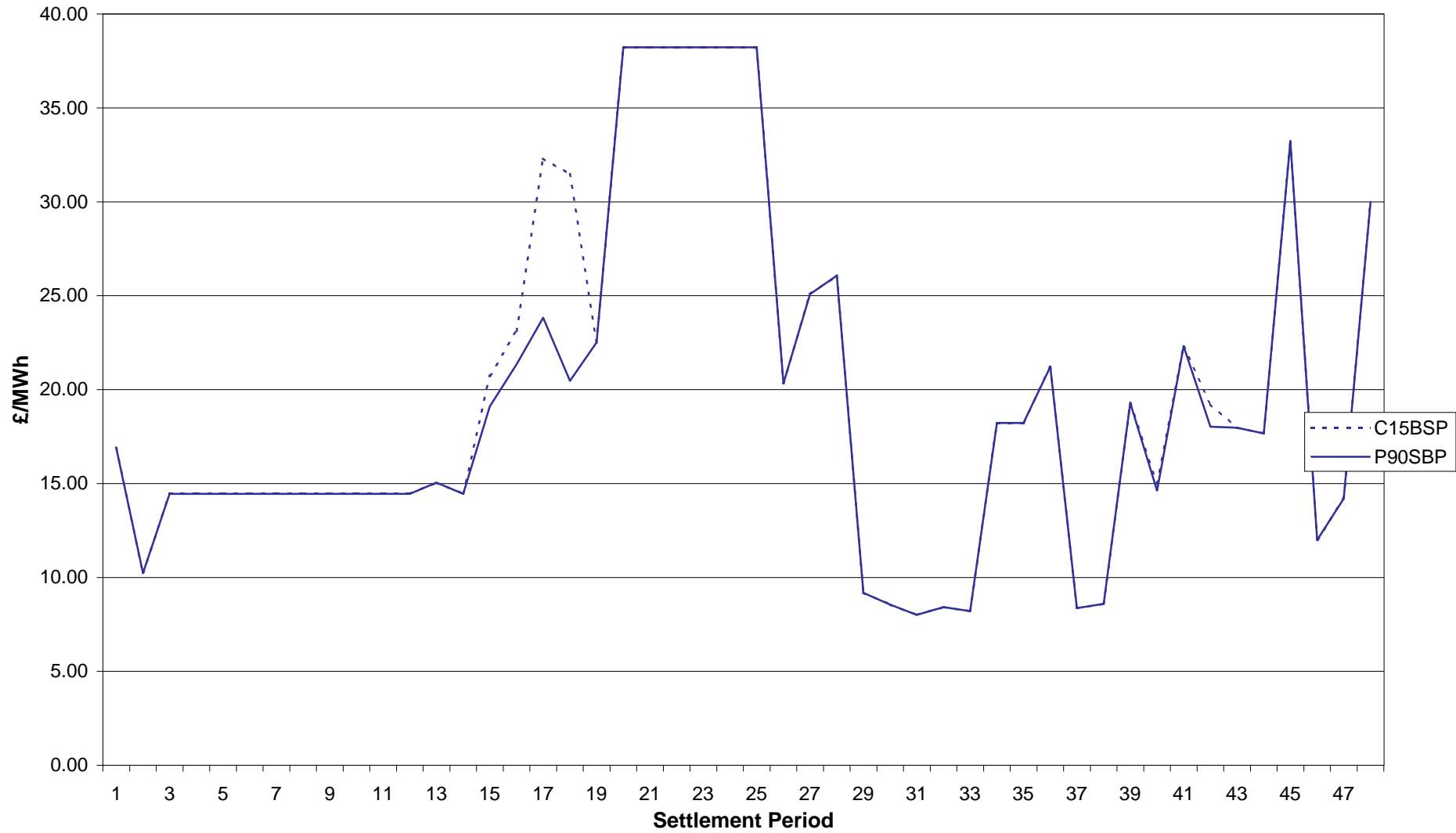
P90: SP 41 @ £78.10



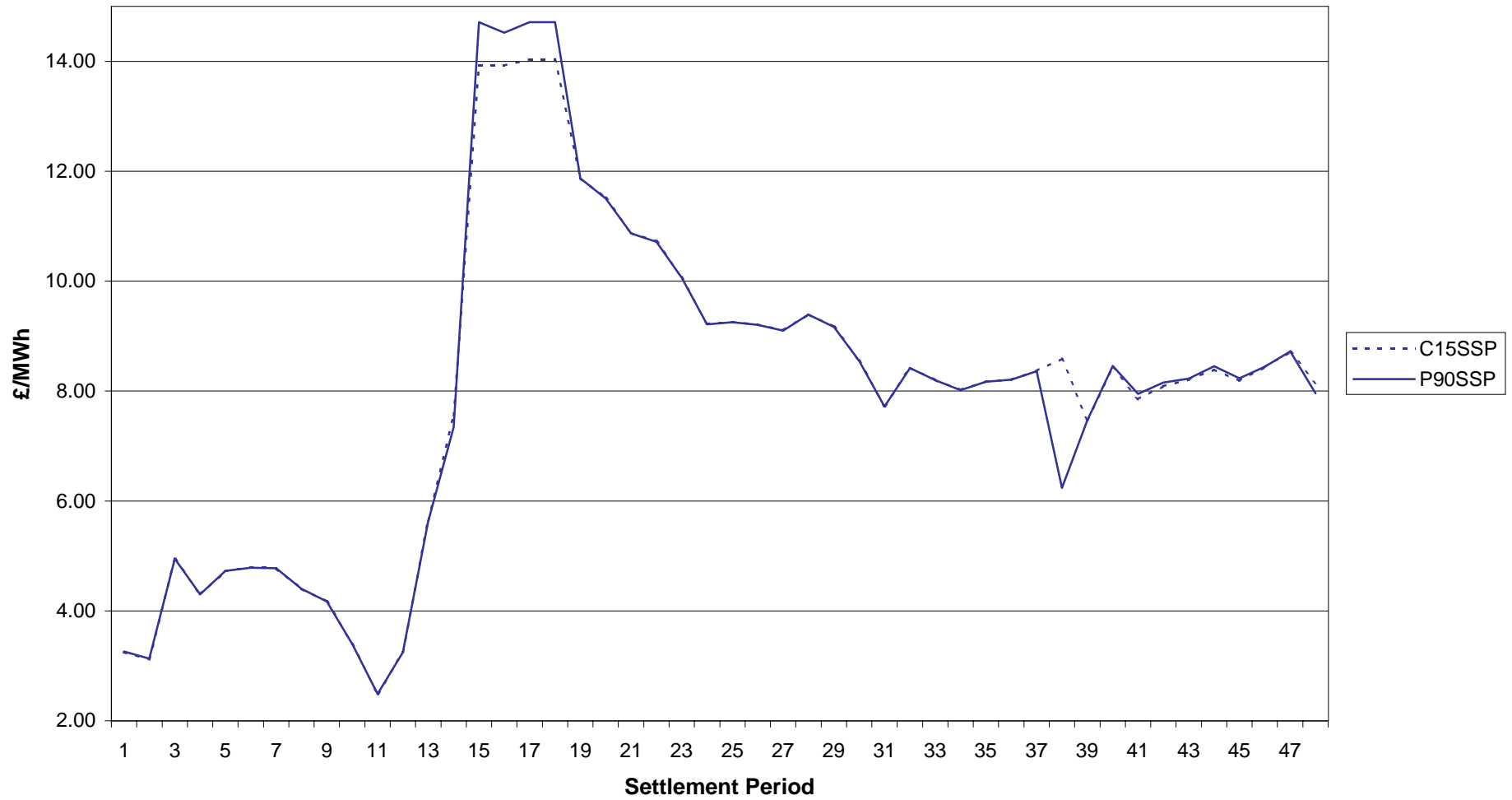
11 July 2002 - SSP Comparison



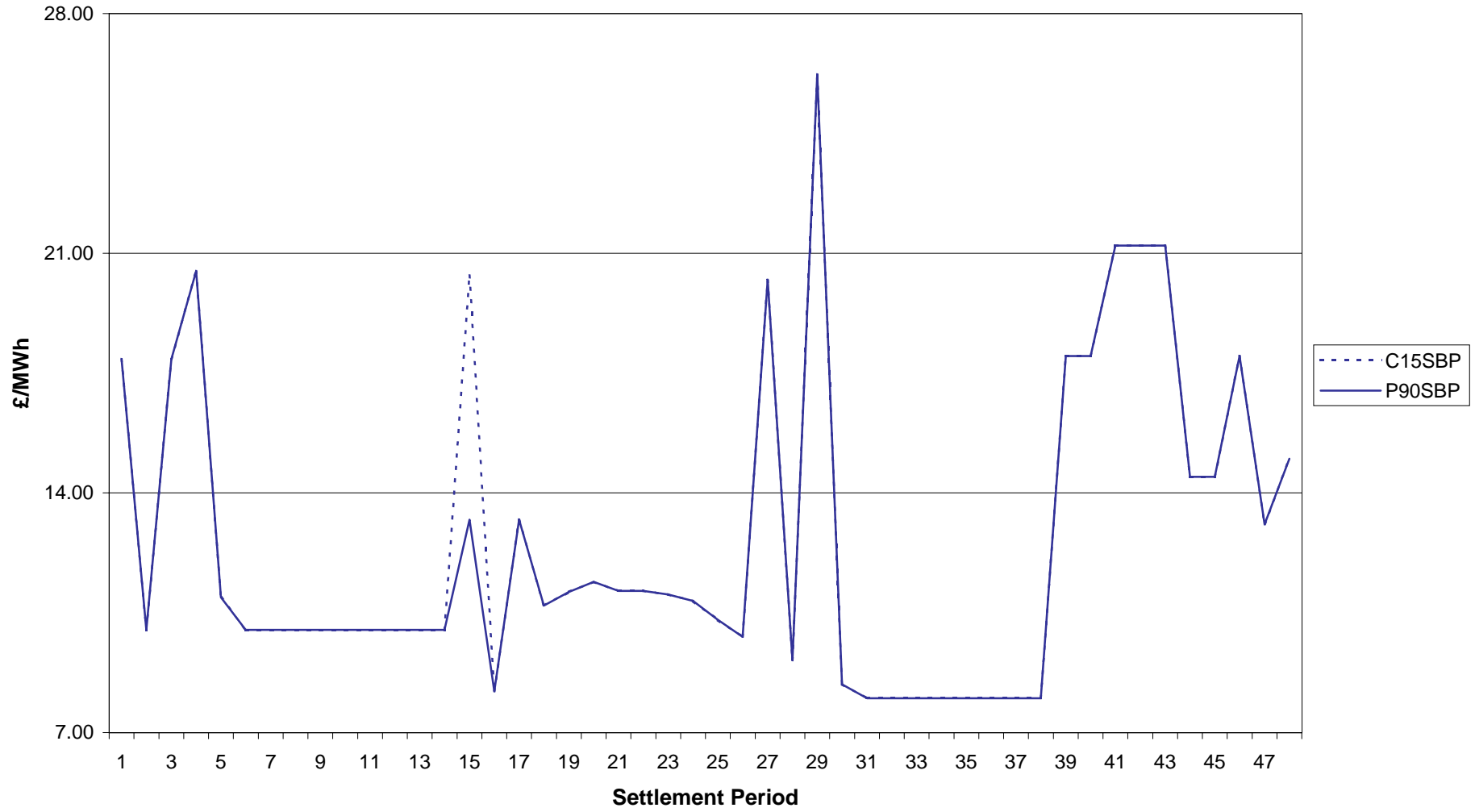
12 July 2002 - SBP Comparison



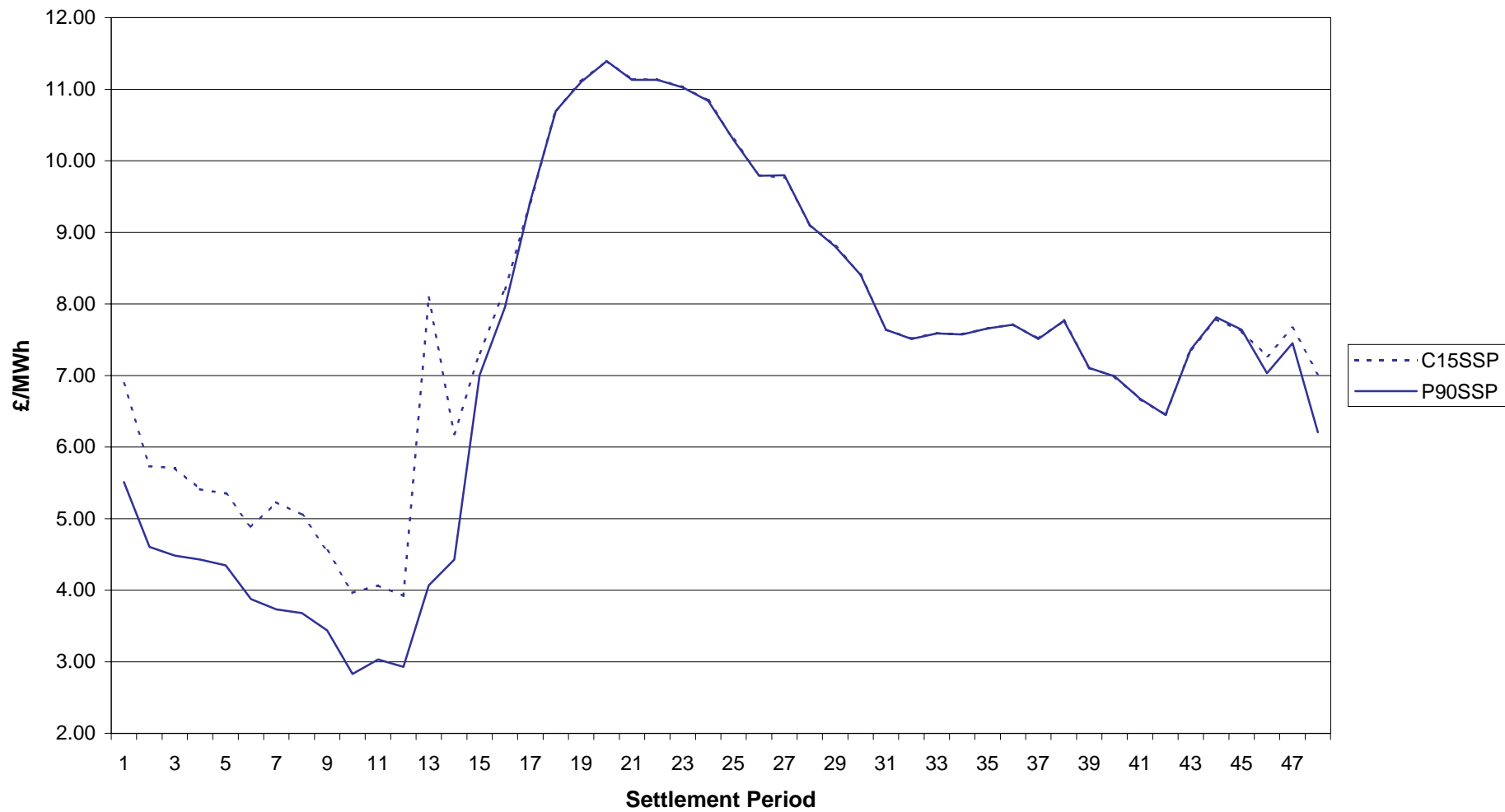
12 July 2002 - SSP Comparison



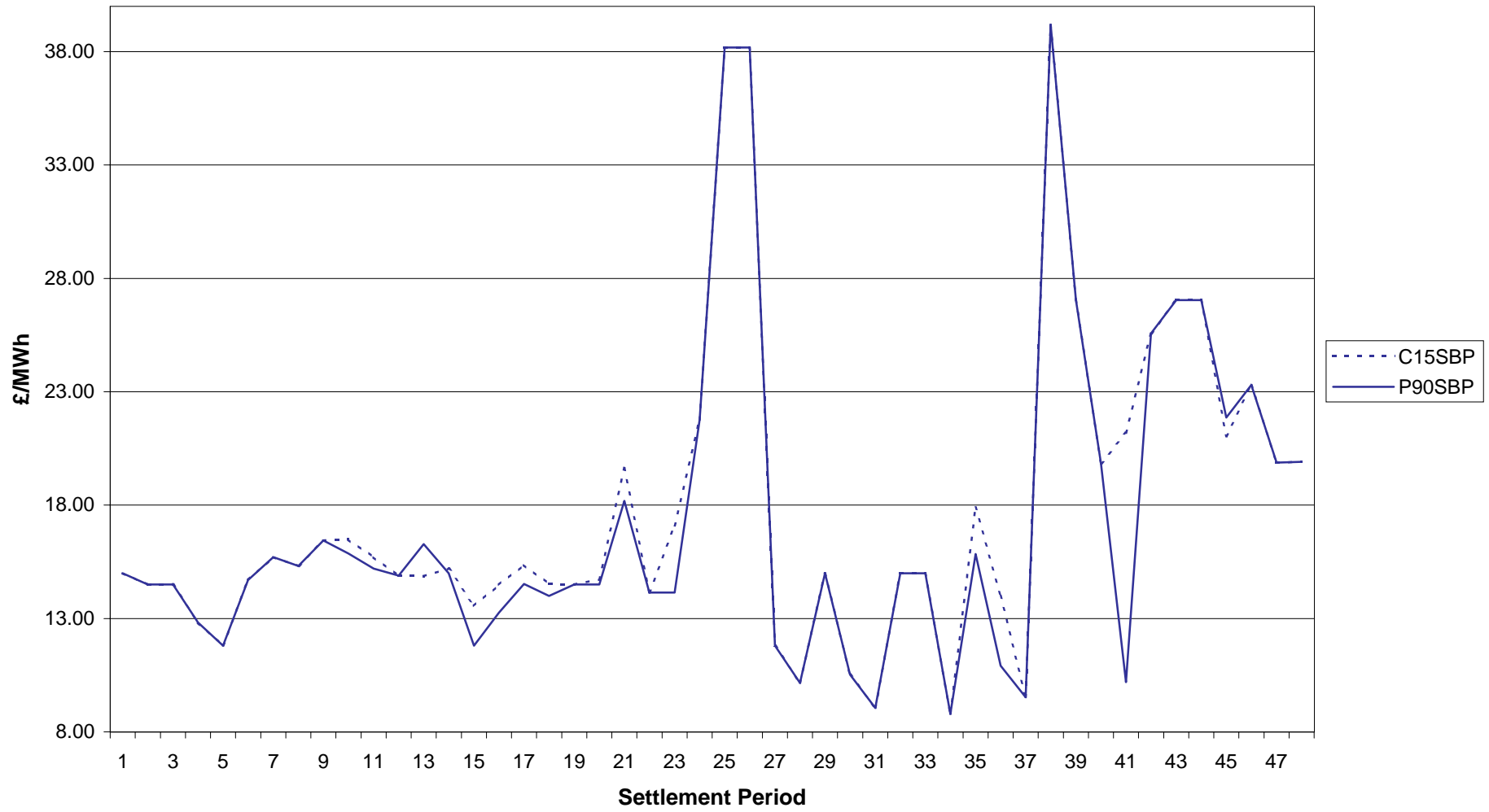
13 July 2002 - SBP Comparison



13 July 2002 - SSP Comparison



14 July 2002 - SBP Comparison





14 July 2002 - SSP Comparison

