



# Consultation for Allocation of a New Grid Supply Point (GSP) to a GSP Group

## LITT\_C and LITT\_J (Littlebrook) GSP Registration

A consultation document issued on behalf of the Panel

**Date of Issue:** Monday 6 February 2012

**Responses Due:** 17:00 on Tuesday 21 February 2012

### Introduction

Section K1.8 of the Code states that the Panel may consider revising the GSPs comprised in a Group of GSPs (including the establishment of a Group of GSPs):

- Where a new GSP Point is commissioned or an existing GSP Point is decommissioned; or
- Where the Panel consider it appropriate to do so.

As part of a 132kV Switchgear change at Littlebrook S/S, National Grid and the affected LDSO are taking the opportunity to regularise the connection arrangement whereby supplies to two LDSO Networks and Littlebrook Power Station Supplies are currently the subject of a difference metering scheme. (Metering Dispensation D:32). This involves the registration of 2 'new' GSPs, and the de-registration of existing GSP\_LITT\_1 and Distribution System Connection Point II\_DARTFORD\_C.

Appendix A shows the 'before' and 'after' scenarios.

The Transmission Company propose that GSP LITT\_C is allocated to the LPN (\_C) GSP Group, and GSP LITT\_J is allocated to the SEPN (\_J) GSP Group.

### Points that the Panel may consider when allocating new GSPs to GSP Groups

Section K1.8.3 of the Code states that the GSPs to be comprised in a Group of GSPs must be determined by the Panel with regard, among other things:



# GSP Consultation

- a) The effect of geographic factors in establishing Daily Profile Coefficients in relation to a GSP Group for the purposes of Supplier Volume Allocation;
- b) The effect of the size of a GSP Group (that is the numbers of Half Hourly and Non Half Hourly Metering Systems at Boundary Points in the GSP Group) on GSP Group Correction Factors for the purposes of Supplier Volume Allocation; and
- c) The effect of the proximity (in terms of electrical connection) of Boundary Points on the value to the Transmission Company (in the operation of the Transmission Company) of Physical Notifications and Bid-Offer Pairs submitted in relation to Supplier BM Units.

Please note that the Panel has delegated its authority in determining GSP allocations to the Supplier Volume Allocation Group (SVG).

## **Respondents' views are sought on these factors when assessing the LITT\_C and LITT\_J GSP Registration.**

Prior to the SVG making any revision of the Grid Supply Points to be comprised in a Group of GSPs, the Code requires the Panel to consult with the Authority, the Transmission Company, the Licensed Distribution System Operators comprised or to be comprised in relevant GSP Groups and all Suppliers (Section K1.8.4 of the Code).

## **Consultation**

ELEXON has received notification of a new GSP registration application from the Transmission Company. The following GSP Registration details have been received:

|  |  |
|--|--|
| GSP ID   | LITT_C and LITT_J  |
| GSP Name   | Littlebrook GSP  |
| Address  | Littlebrook 132kV Substation<br>Manor Way,<br>Dartford,<br>Kent<br>DA1 5PS |
| LDSO to which GSP Connecting                                       | London Power Networks (LPN) and South Eastern Power Networks (SEPN)        |
| Prospective Registrant of the Metering Systems associated with GSP | National Grid  |
| Proposed Effective From Date of Registration                       | 31 March 2012  |



# GSP Consultation

## Transmission Company's proposal:

The GSP LITT\_C should be allocated to the LPN (\_C) GSP Group, and GSP LITT\_J should be allocated to the SEPN (\_J) GSP Group GSP because these works and consequent registration changes are being undertaken to regularise an existing situation and the System Connection Points will be to the LPN and SEPN Distribution System respectively. In addition, the directly connected CVA BM Units associated with Littlebrook Power Station demand will no longer be subject to netting off from the GSP Metered Volume.

You are invited to provide a response in respect of the questions on the attached pro-forma.

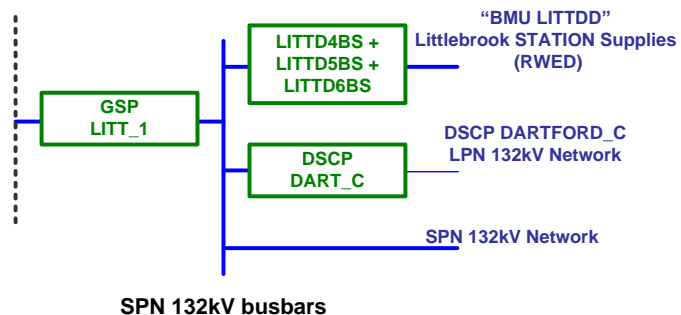
Please send your responses, entitled "Littlebrook GSP Registration Consultation", to [bm.unit@elexon.co.uk](mailto:bm.unit@elexon.co.uk) by **17:00 on Tuesday 21 February 2012.**

If you have any queries on the content of the consultation pro-forma, please contact Sarah Hughes on 020 7380 4205.

# GSP Consultation

## LITTLEBROOK Settlement Arrangements Autumn 2010

NGC 400kV busbars



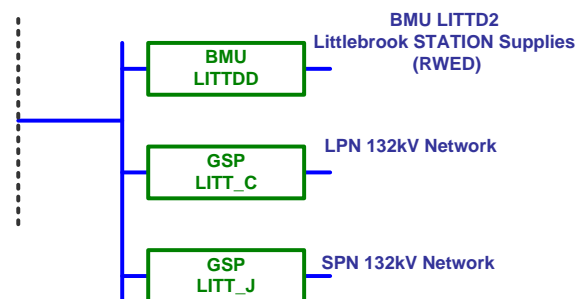
SPN = LITT\_1 – LITDD – DART\_C

LPN =  
DARTFORD\_C

RWED = LITDD

## LITTLEBROOK Settlement Arrangements Post s/g change

NGC 400kV busbars



SPN = LITT\_J

LPN = LITT\_C

RWED = LITDD

On completion, the following Metering  
Systems will become redundant:  
DSCP\_DARTFORD\_C, GSP\_LITT\_1

Appendix A